

Weekly Market Summary

Published by:
Missouri Department of Agriculture
Ag Business Development Division
Market News Program



Chris Chinn, Director
 Jill Wood, Division Director
 Tony Hancock, Editor
[agmarketnews.mo.gov](http://www.ams.usda.gov/marketnews.htm)
<http://www.ams.usda.gov/marketnews.htm>

Michael L. Parson, Governor

Volume XLIII, Number 47 ♦ P.O. Box 630, Jefferson City, MO 65102 ♦ (573) 751-4211 ♦ Mon, Nov 27, 2023

MISSOURI WEEKLY FEEDER CATTLE WEIGHTED AVERAGE REPORT

Receipts: 21,488 Week ago: 24,409 Year ago: 26,234

Steers and Heifers Medium and Large 1—Weighted average weights and prices

STEERS: Medium and Large 1

327 lbs. 312.69 531 lbs. 277.55 717 lbs. 249.71 921 lbs. 221.32
 382 lbs. 308.26 579 lbs. 272.07 779 lbs. 239.36 990 lbs. 219.18
 426 lbs. 298.38 625 lbs. 255.79 822 lbs. 237.52 1040 lbs. 203.00
 475 lbs. 298.31 674 lbs. 249.88 877 lbs. 236.46

HEIFERS: Medium and Large 1

327 lbs. 269.50 525 lbs. 234.56 721 lbs. 229.88 942 lbs. 195.00
 369 lbs. 274.10 570 lbs. 230.93 769 lbs. 222.55
 424 lbs. 261.07 618 lbs. 241.85 816 lbs. 219.58
 475 lbs. 259.90 681 lbs. 236.00 856 lbs. 210.65

MISSOURI STEER (HEIFER) STOCKER FORMULA 11/27/2023

Monday's Missouri Stocker formula consists of **3666 (2992)** head with a weighted average weight of **553.68 (539.09)** lbs. and a price value of **263.40 (234.09)**, 6.45 higher (9.24 higher) than last week.

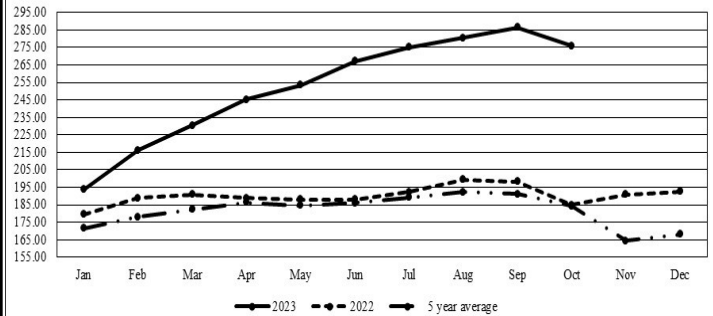
This a rolling seven day calculated weighted value which combines all Feeder Steers reported by MDA/USDA Market News Service weighing from 400-649 lbs. in the Medium and Large 1 and Medium and Large 1-2 frame and muscle classifications, including all comment cattle except Brahman X. Heifer values are in parentheses.

MISSOURI WEEKLY CATTLE AUCTION SUMMARY

Compared to last week, not enough comparable sales to establish a market trend. Many auctions barns remained dark or had very light offerings for the shortened holiday week. Joplin Regional Stockyards sold over 125 loads of yearlings on Monday and Green City Livestock Auction held their two day Annual Thanksgiving Special, combined those locations accounted for near 70 percent of the feeder offering this week with 67 percent of the feeders over 600 lbs. Fueled by volume, health and reputation these sales did see stronger markets but again offerings were a bit different than usual. Futures markets didn't provide anything to be thankful for last week as technical selling and computer trading have made the daily futures movements extremely volatile. The January Feeder Cattle contract closed down 9.15 for the week and December Live Cattle closed 5.50 lower with most of the losses occurring on Friday following the holiday. Although fairly short lived much of the northern half of the state saw the first snow of the year with some areas seeing a few inches of white covering the ground. A couple of stick out sales this week included 250 head of 864 lb. steers at Joplin Regional Stockyards which sold for 246.00. Unionville Livestock Market sold a load of 623 lb. steers at 272.75. Green City Livestock Market sold 100 head of 712 lb. heifers at 238.50. As the year winds down there is always several replacement cow specials held from Thanksgiving till the end of the year allowing farmers to make a few capital purchases before the end of the tax year. Eastern Missouri Commission Company helped to kick those sales off on Saturday. A combined 40 head of fancy 3rd stage heifers sold from 3450.00-3700.00 per head. Over 200 head of good quality heifers just not quite as fancy sold with a weighted average of price of 2733.10 per head. Boxed beef cutouts were mixed for the week. On Friday choice closed at 298.03, up 4.16 and select closed at 268.76, down 1.94 compared to last week. Negotiated feedlot sales as of the Friday afternoon came in 47K head. Live sales were reported mostly from 177.00-178.00 and dressed sales at 275.00-278.00 with a few early week at 280.00. Missouri Stocker formula consists of 3666 head with a weighted average weight of 553.68 lbs. and a price value of 253.68, 6.45 higher than a week ago. The steer/heifer spread is 29.31.

The Weekly Market Summary, as well as historical summaries, are available on our website <https://agmarketnews.mo.gov/summaries>
 Market News Hotline: 1-573-522-9244

Missouri Stocker Formula - Steers

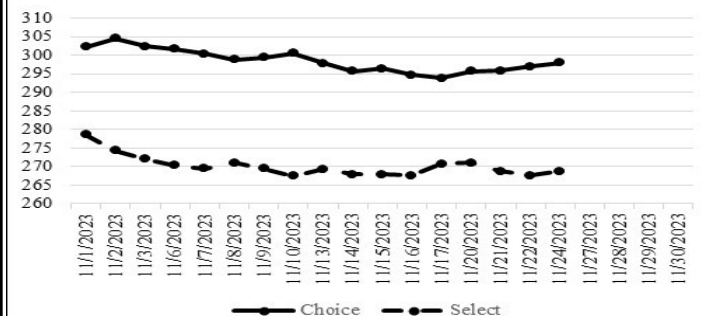


*Graph is updated the first Monday of each month. Axis value ranges may be updated to reflect data points.

NATIONAL BOXED BEEF CUTOUT/BOXED BEEF CUTS

<u>DATE</u>	<u>CHOICE</u>	<u>SELECT</u>	<u>TOTAL LOADS</u>
11/20	295.75	270.95	135
11/21	295.81	268.77	166
11/22	297.00	267.62	170
11/23	-	-	-
11/24	298.03	268.76	57
4 Day Simple Average	296.65	269.03	

Boxed Beef Cuts November 2023



*Axis value ranges may be updated to reflect data points.

WEEKLY LIVESTOCK SLAUGHTER 11/25/23

	<u>CATTLE</u>	<u>HOGS</u>	<u>SHEEP</u>
Week to Date:	538,000	2,221,000	26,000
Last Week:	636,000	2,644,000	39,000
Last Year:	589,000	2,210,000	31,000

SOUTHWEST MISSOURI WEEKLY SUMMARY

(Joplin and Springfield)

Receipts: 12,000 Week ago: 13,311 Year Ago: 14,003

Compared to last week, steer calves steady to 2.00 higher, yearlings 5.00 to 10.00 higher. Heifer calves steady to 3.00 lower, yearlings 10.00 to 18.00 higher. Slaughter cows and bulls steady to 3.00 lower.

FEEDER STEERS:
Medium and Large 1

Table with 2 columns: Weight ranges (300-400 lbs to 900-1000 lbs) and prices (305.00-340.00 to 215.00-227.00).

FEEDER HEIFERS:
Medium and Large 1

Table with 2 columns: Weight ranges (300-400 lbs to 12 hd 942 lbs) and prices (256.00-290.00 to 195.00).

FEEDER HOLSTEIN STEERS
Large 3

Pkg 560 lbs. 150.00

SLAUGHTER COWS: Breaking and Boning (70-85% Lean) 80.00-96.00, high dressing 94.00-104.00; low dressing 72.50-86.00. Lean (85-90%) 75.00-88.00

SLAUGHTER BULLS: Yield Grade 1-2 1425-2445 lbs. 104.00-116.50; high dressing 115.00-125.00; low dressing 93.50-104.00

BRED COWS: Medium and Large 1 2-8 yrs 1114-1370 lbs 2nd/3rd stage 1625.00-2050.00. Medium and Large 1-2 2-8 yrs 1055-1430 lbs 2nd/3rd stage 1160.00-1625.00 per head

BRED HEIFERS: Medium and Large 1-2 <2 yrs 835 lbs 1st stage 1000.00; 2-4 yrs 970-1125 lbs 2nd/3rd stage 1350.00-1475.00 per head

COW & CALF PAIRS: Medium and Large 1-2 2-8 yrs 1160-1190 lbs with 150-300 lb calves 1900.00-2100.00; 2-8 yrs rebred 1st stage with 150 to >300 lb calves 1725.00-2500.00; >8 yrs 1120-1185 lbs with 150 to >300 lb calves 1700.00-1850.00 per pair

SOUTH CENTRAL MISSOURI WEEKLY SUMMARY

(West Plains, Phillipsburg)

Receipts: 1,510 Week ago: 4,233 Year Ago: 2,228

Compared to last week, too few for an adequate comparison, however undertones were higher. Slaughter cows and bulls steady.

FEEDER STEERS:
Medium and Large 1

Table with 2 columns: Weight ranges (350-400 lbs to 600-650 lbs) and prices (292.50-315.00 to 240.00-241.00).

FEEDER HEIFERS:
Medium and Large 1

Table with 2 columns: Weight ranges (400-500 lbs to 500-550 lbs) and prices (237.50-247.00 to 220.00).

FEEDER HOLSTEIN STEERS
Large 3

Scarce Scarce

SLAUGHTER COWS: Breaking and Boning (70-85% lean) 78.00-93.50, high dressing 93.00-105.00. Lean (85-90%) 65.00-82.00

SLAUGHTER BULLS: Yield Grade 1-2 1070-2165 lbs. 98.00-111.00; high dressing 110.00-127.00

BRED COWS: Medium and Large 2 2-8 yrs 1095-1330 lbs 2nd/3rd stage 1100.00-1600.00; >8 yrs 1075 lbs 3rd stage 800.00 per head

BRED HEIFERS: Scarce

COW & CALF PAIRS: Medium and Large 2 2-8 yrs 1100-1290 lbs with <150 lb calves 1450.00-2250.00 per pair

WEST CENTRAL MISSOURI WEEKLY SUMMARY

(Kingsville, Windsor, Butler)

Receipts: 911 Week ago: 4,675 Year ago: 1,990

Compared to last week, too few for a true market test, but couple loads of yearling steers steady. Slaughter cows mostly 2.00 to 3.00 higher, spots 6.00 to 7.00 higher on fleshier cows.

FEEDER STEERS:
Medium and Large 1

Table with 2 columns: Weight ranges (Pkg 395 lbs to Pkg 610 lbs) and prices (270.00 to 250.00).

FEEDER HEIFERS:
Medium and Large 1

Table with 2 columns: Weight ranges (Pkg 356 lbs to Pkg 893 lbs) and prices (282.50 to 215.50).

SLAUGHTER BULLS: Yield Grade 1-2 1300-2075 lbs 104.00-112.00; high dressing 111.00-119.00, low dressing 91.50-101.00

SLAUGHTER COWS: Breaking and Boning (70-85% Lean) 89.00-102.00, high dressing 94.50-111.00; low dressing 77.00-84.00. Lean (85-90%) 71.00-82.50

BRED COWS: Medium and Large 1-2 5-8 yrs 1250-1291 lbs 2nd/3rd stage 1225.00-1385.00 per head

COW & CALF PAIRS: Scarce

NORTHEAST MISSOURI WEEKLY SUMMARY

(Bowling Green, Kingdom City, Palmyra)

Receipts: 3,540 Week ago: 3,189 Year ago: 3,069

Compared to last week, steers steady to firm undertone, heifers under 500 lbs firm to higher undertone, 500-600 lbs mostly 10.00 to 20.00 higher, over 600 lbs firm to 4.00 higher. Slaughter cows steady to 5.00 higher, high dressing breaker cows 5.00 to 10.00 higher.

FEEDER STEERS:
Medium and Large 1

Table with 2 columns: Weight ranges (400-500 lbs to 900-950 lbs) and prices (278.00-295.00 to 221.25-222.75).

FEEDER HEIFERS:
Medium and Large 1

Table with 2 columns: Weight ranges (400-500 lbs to 700-750 lbs) and prices (252.00-274.00 to 229.75-230.50).

SLAUGHTER BULLS: Yield Grade 1-2 1345-2330 lbs 114.00-126.00; low dressing 88.50-115.00

SLAUGHTER COWS: Breaking and Boning, (70-85% lean) 77.00-102.00; high dressing 85.00-116.00; low dressing 71.50-92.00. Lean (85-90%) 75.00-89.50

SLAUGHTER STEERS: Choice 2 -3 177.50

SLAUGHTER HEIFERS: Scarce

BRED COWS: Medium and Large 1 2-8 yrs 1171-1475 lbs 2nd/3rd stage 2100.00-2775.00. Medium and Large 1-2 2-8 yrs 1273-1600 lbs 2nd/3rd stage 1750.00-2000.00 per pair

COW/CALF PAIRS: Medium and Large 1 2-8 yrs 1300-1400 lbs with 150-300 lb calves 2975.00-3350.00; >5 yrs 1250-1350 lbs with 150-300 lb calves 2150.00-2450.00 per pair

NORTH CENTRAL MISSOURI WEEKLY SUMMARY

(Macon, Unionville, Green City, New Cambria)

Receipts: 6,249 Week ago: 3,420 Year ago: 7,971

Compared to last week, not an adequate comparison for feeders due to Thanksgiving specials. Slaughter cows steady to lower undertone.

*Some sale barns on a bi-weekly schedule and may not have a sale each week.

FEEDER STEERS:
Medium and Large 1

Table with 2 columns: Weight ranges (400-500 lbs to 64 hd 906 lbs) and prices (279.00-323.00 to 230.60).

FEEDER HEIFERS:
Medium and Large 1

Table with 2 columns: Weight ranges (400-500 lbs to 117 hd 809 lbs) and prices (256.50-281.00 to 227.50-228.75).

SLAUGHTER BULLS: Yield Grade 1-2 1450-2140 lbs 101.00-125.00; high dressing couple 115.00-117.50; low dressing 108.00-112.00

SLAUGHTER COWS: Breaking and Boning, (70-85% lean) 79.00-102.50; high dressing 87.00-108.00; low dressing 80.00-90.00. Lean (85-90%) 70.00-92.50

BRED COWS: Medium and Large 1 2-8 yrs 1125-1235 lbs 2nd/3rd stage 1850.00-2050.00 per head

COW & CALF PAIRS: Medium and Large 1 2-8 yrs 1250-1350 lbs with 150-300 lb calves 2400.00-2700.00 per pair

SOUTHEAST MISSOURI WEEKLY SUMMARY

(Jackson and Farmington) (w/e 11/18/23)

Receipts: 1,186 Week ago: 1,621 Year ago: 1,745

Compared to last week, steers and heifers uneven from 8.00 lower to 6.00 higher. Slaughter cows 1.00 lower to 2.00 higher. Slaughter bulls steady.

FEEDER STEERS:

Medium and Large 1

300-400 lbs.	247.50-285.00
400-500 lbs.	245.00-277.00
500-600 lbs.	235.00-268.00
600-700 lbs.	227.00-245.00
700-800 lbs.	216.00-236.00
12 hd 911 lbs.	215.00

FEEDER HEIFERS:

Medium and Large 1

300-400 lbs.	225.00-247.00
400-500 lbs.	210.00-239.00
500-600 lbs.	215.00-234.00
600-700 lbs.	210.00-227.00
700-800 lbs.	206.00-219.00

SLAUGHTER BULLS: Yield Grade 1-2 1360-2175 lbs. 90.00-107.00; high dressing 105.50-119.00

SLAUGHTER COWS: Breaking and Boning (75-85% lean) 70.00-89.00; high dressing 87.00-103.00. Lean (85-90% lean) 65.00-78.00

BRED COWS: Medium and Large 2 2-8 yrs 1075-1450 lbs 2nd to 3rd stage 1000.00-1850.00; >8 yrs 1100-1260 lbs 2nd to 3rd stage 925.00-1125.00 per head

COW & CALF PAIRS: Medium and Large 2 2-8 yrs 1000-1500 lbs some rebred with 150 to >300 lb calves 1200.00-2900.00 per pair

EAST CENTRAL MISSOURI WEEKLY SUMMARY

(Cuba, Vienna) (w/e 11/18/23)

Receipts: 2,562 Week ago: 4,003 Year ago: 3,448

Compared to last week, steers and heifers mostly 5.00 to 7.00 higher on comparable sales. Slaughter cows and bulls steady to 4.00 lower.

FEEDER STEERS:

Medium and Large 1

400-500 lbs.	260.00-315.50
500-600 lbs.	249.00-301.00
600-700 lbs.	234.00-266.00
700-800 lbs.	232.00-239.00
12 hd 880 lbs.	215.00-234.50

FEEDER HEIFERS:

Medium and Large 1

400-500 lbs.	235.00-271.00
500-600 lbs.	226.00-254.00
600-700 lbs.	208.00-240.50

SLAUGHTER BULLS: Yield Grade 1-2 1185-2170 lbs 104.00-118.00; low dressing 90.00-104.00

SLAUGHTER COWS: Breaking and Boning, (70-85% lean) 82.00-97.50; high dressing 94.50-103.00; low dressing 78.50-82.00. Lean (85-90%) 77.50-89.00

BRED COWS: Medium and Large 1-2 2-8 yrs 1055-1465 lbs 2nd to 3rd stage 1300.00-1650.00 per head

COW & CALF PAIRS: Scarce

NORTHWEST MISSOURI WEEKLY SUMMARY

(Tina)

Receipts: 2,653 Week Ago: 714 Year Ago: 1,960

Compared to last week, steers and heifers sold 5.00 to 10.00 higher, with some spots sharply higher, with unweaned, less attractive calves sold steady to firm.

FEEDER STEERS:

Medium and Large 1

400-500 lbs.	275.00-301.00
500-600 lbs.	254.00-275.00
600-700 lbs.	245.50-256.00
750-800 lbs.	230.00-231.50
67 hd 811 lbs.	228.25

FEEDER HEIFERS:

Medium and Large 1

450-500 lbs.	237.50-256.00
500-600 lbs.	222.00-249.00
600-700 lbs.	217.00-244.75
700-800 lbs.	225.75-228.25

SLAUGHTER BULLS: Yield Grade 1-2 1470-2350 lbs 115.00-119.00

SLAUGHTER COWS: Breaking and Boning, (70-85% lean) 77.00-100.00; high dressing 102.00-110.00; low dressing 70.00-77.00. Lean (85-90%) 78.00-94.00

BRED COWS: Medium and Large 1 2-8 yrs 1158-1533 lbs 2nd/3rd stage 1700.00-2350.00; >5 yrs 1550 lbs 2nd/3rd stage 1550.00. Medium and Large 1-2 2-8 yrs 1035-1564 lbs 2nd/3rd stage 1300.00-1850.00, 1st stage 1275.00-1310.00 per head

COW & CALF PAIRS: Medium and Large 1 5-8 yrs 1475-1700 lbs with 150-300 lb calves 2950.00-3000.00. Medium and Large 1-2 2-8 yrs 1025-1700 lbs with <150 to >300 lb calves 2200.00-2950.00 per pair

AFTERNOON NATIONAL SLAUGHTER CATTLE REVIEW

Thus far for Friday in the Southern Plains negotiated cash trading has been at a standstill. The last reported market was on Wednesday with live FOB purchases at 177.00. In Nebraska and Western Cornbelt negotiated cash trading has been light on light demand. In Nebraska, compared to the last reported market on Wednesday, dressed delivered purchases traded 5.00 lower at 275.00. Not enough live FOB purchases for a market trend. Last week live FOB purchases traded at 178.00. In the Western Cornbelt a few live FOB and dressed delivered purchases traded at 177.00 and 278.00, however, not enough for a market trend. Wednesday was the last reported live FOB market from 177.00-178.00. The last reported dressed delivered market was last week with purchases at 282.00.

Negotiated Cash Sales:

Confirmed:	11,452	Week Ago:	5,834	Year Ago:	605
Week to date:	47,434	Week Ago:	57,959	Year Ago:	94,118

<u>Live Basis</u>	<u>Steers</u>	<u>Heifers</u>
Over 80% Choice	175.00-177.00, avg 176.31	176.00-178.00, avg 177.24
65-80% Choice	-	-
35-65% Choice	-	-
0-35% Choice	-	-
Total All Grades	175.00-177.00, avg 176.31	176.00-178.00, avg 177.24
Dressed Basis		
Over 80% Choice	275.00-280.00, avg 276.12	275.00-278.00, avg 275.63
65-80% Choice	280.00	-
35-65% Choice	-	-
0-35% Choice	-	-
Total All Grades	275.00-280.00, avg 276.17	275.00-278.00, avg 275.63

<u>All Beef Type Steers/Heifers</u>	<u>Head</u>	<u>Avg Wt</u>	<u>Price Range</u>	<u>Wtd Avg</u>
Live FOB	5,032	1452.8	175.00-178.50	176.36
Live Del	449	1509.1	177.00-180.00	177.77
Dressed Del	5,769	951.3	275.00-280.00	276.83
Dressed FOB	-	-	-	-

WEEKLY COMMODITY FUTURES TRENDS

Compared to last week, Live Cattle 3.55 to 5.83 lower, Lean Hogs 3.40 to 6.68 lower, Feeder Cattle 7.30 to 9.18 lower.

Daily Futures Closes

	Mon.	Tues.	Wed.	Thu.	Fri.
Cattle					
Dec	175.47	175.00	174.47	Holiday	170.25
Feb	176.65	176.07	175.27		170.97
Apr	178.72	178.22	177.65		173.30
Jun	174.30	173.80	173.47		169.50
Aug	174.65	174.35	173.97		170.05
Lean Hogs					
Dec	70.35	68.17	68.27	Holiday	67.57
Feb	75.05	72.32	71.82		68.77
Apr	80.97	78.62	78.57		75.27
May	86.60	84.77	84.75		82.02
Jun	94.70	93.05	93.20		90.85
Fdr Cat					
Jan	229.85	228.32	227.12	Holiday	219.32
Mar	232.30	231.22	230.12		222.72
Apr	235.82	234.90	233.90		226.67
May	239.25	238.42	237.42		230.47
Aug	252.50	251.72	250.67		244.37
Milk					
Nov	17.13	17.12	17.13	Holiday	17.13
Dec	16.38	16.40	16.35		16.35
Jan	16.53	16.52	16.44		16.44

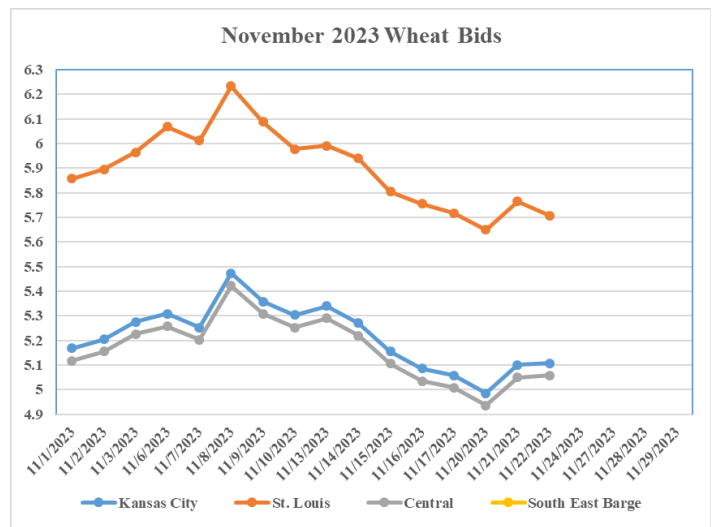
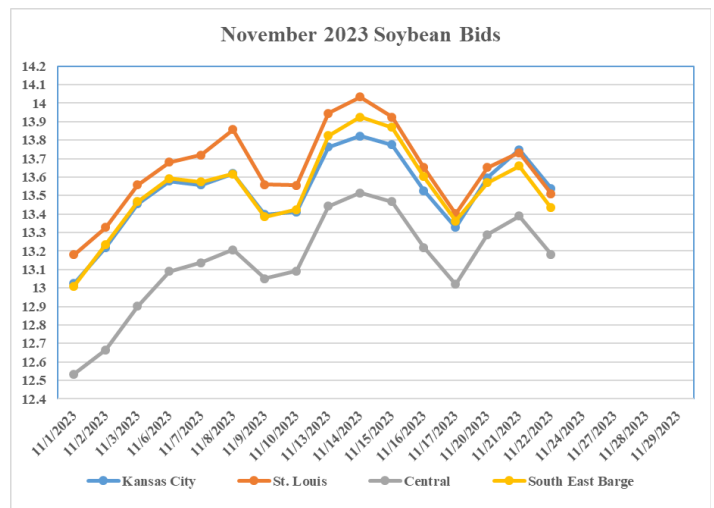
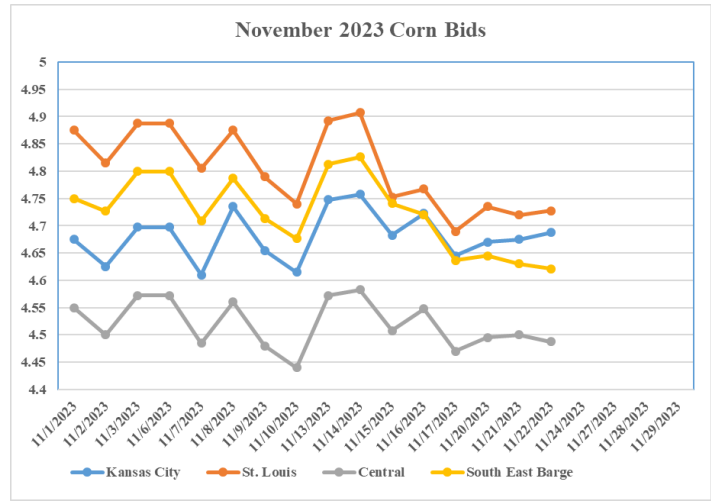
WEEKLY COMMODITY GRAIN FUTURES TRENDS

Compared to last week, Soybeans 0.06 to 0.10 lower, Wheat 0.01 to 0.02 lower, Corn 0.01 to 0.04 lower, KC Wheat 0.12 to 0.16 lower, Soybean Meal 2.00 to 2.50 lower, except Dec 4.10 higher.

Daily Grain Futures Closes

	Mon.	Tues.	Wed.	Thu.	Fri.
Soybeans					
Jan	1367 1/4	1377 1/4	1356 1/2	Holiday	1330 3/4
Mar	1383 1/4	1393	1371 1/4		1348 3/4
May	1395	1404 3/4	1387 1/4		1362
Jul	1398 1/2	1408 1/2	1392		1367
Aug	1374 3/4	1384 1/2	1369 1/4		1344 3/4
Wheat					
Dec	543 1/2	555	555 3/4	Holiday	548 3/4
Mar	570 1/2	582 3/4	584 1/2		577 1/4
May	586 1/4	597 1/4	599 1/4		591 1/2
Jul	600	610 1/2	612 1/4		604
Sep	615 1/4	625 1/2	626 3/4		618 1/4
Corn					
Dec	469 1/2	470	468 3/4	Holiday	463 1/4
Mar	487 1/2	489	487 3/4		482 1/2
May	497 3/4	500	499		494 1/2
Jul	506	509	508		503 3/4
Sep	507 1/2	510 1/4	509		505 1/4
KC Wheat					
Dec	610 1/2	615 3/4	614 1/2	Holiday	602
Mar	620 1/4	625 1/2	624 1/4		611 1/2
May	626 1/2	632 1/4	631 1/2		618 1/2
Jul	632 3/4	638 1/2	638		625 1/2
Sep	643 1/4	649 1/4	649 1/4		637 1/2
SB Meal					
Dec	460.20	459.20	458.10	Holiday	457.40
Jan	443.30	442.00	437.60		434.10
Mar	430.10	429.80	424.10		421.50
May	420.20	420.50	413.70		412.30
Jul	417.30	417.50	410.60		409.60

MONTHLY GRAIN CROP



*Axis value ranges may be updated to reflect data points.

MISSOURI GRAIN WEEKLY TRENDS

Compared to last week, Soybeans 0.03 to 0.26 higher, Wheat 0.02 lower to 0.05 higher, Corn 0.01 lower to 0.07 higher, Sorghum 0.07 lower to 0.01 higher.

Area	#1 Soybeans	#2 Soft Wheat	#2 Corn	#2 Grain Sorghum
Kansas City				
Friday**	13.20-13.55	5.06	4.52-4.77	5.02
Monday	13.47-13.82	4.99	4.55-4.80	5.05
Tuesday	13.57-13.92	5.10	4.55-4.80	5.05
Wednesday	13.36-13.71	5.10	4.53-4.83	5.03
Thursday	Holiday	Holiday	Holiday	Holiday
Friday	Holiday	Holiday	Holiday	Holiday
St. Louis				
Friday**	13.32-13.48	5.71-5.73	4.63-4.75	5.27
Monday	13.63-13.67	5.64-5.67	4.72-4.76	5.22
Tuesday	13.73	5.75-5.78	4.72	5.22
Wednesday	13.50-13.51	5.70	4.70-4.74	5.20
Thursday	Holiday	Holiday	Holiday	Holiday
Friday	Holiday	Holiday	Holiday	Holiday
Central				
Friday**	12.95-13.05	5.01	4.47	—
Monday	13.22-13.32	4.94	4.50	—
Tuesday	13.32-13.42	5.05	4.50	—
Wednesday	13.11-13.21	5.05	4.48	—
Thursday	Holiday	Holiday	Holiday	—
Friday	Holiday	Holiday	Holiday	—
S.E. MO				
Friday**	13.30-13.40	—	4.57-4.67	—
Monday	13.54-13.61	—	4.60-4.70	—
Tuesday	13.64-13.67	—	4.59-4.65	—
Wednesday	13.38-13.46	—	4.58-4.63	—
Thursday	Holiday	—	Holiday	—
Friday	Holiday	—	Holiday	—

(PRICES PER BUSHEL) *NEW CROP **PREVIOUS WEEK'S PRICES
*Bids calculated using Kansas City, St. Louis, and St. Joseph bids

WHOLESALE FEEDSTUFFS PRICES
(DOLLARS PER TON-BULK BASIS) week ending 11/17/23

Area	Soybean Hulls Pellets	Soybean Meal 46.5-48%	Corn Gluten Pellets 21%	Wheat Middlings
Kansas City	196.67	478.30	267.50	173.33
St. Louis	n/a	n/a	255.00	161.67

COLD STORAGE

October 2023 Highlights

Total natural cheese stocks in refrigerated warehouses on October 31, 2023 were down 1 percent from the previous month but up 1 percent from October 31, 2022.

Butter stocks were down 11 percent from last month and down 1 percent from a year ago.

Total frozen poultry supplies on October 31, 2023 were down 6 percent from the previous month but up slightly from a year ago. Total stocks of chicken were up 3 percent from the previous month but down 4 percent from last year. Total pounds of turkey in freezers were down 24 percent from last month but up 13 percent from October 31, 2022.

Total frozen fruit stocks were up 22 percent from last month and up 19 percent from a year ago.

Total frozen vegetable stocks were up 5 percent from last month and up 1 percent from a year ago.

Total red meat supplies in freezers were down slightly from the previous month and down 14 percent from last year. Total pounds of beef in freezers were up 6 percent from the previous month but down 13 percent from last year. Frozen pork supplies were down 6 percent from the previous month and down 14 percent from last year. Stocks of pork bellies were down 6 percent from last month and down 31 percent from last year.

MISSOURI CROP PROGRESS AND CONDITION

	Week Ending			2018-2022 Average
	11/19/23	11/12/23	11/19/22	
Corn harvested	97	94	96	94
Soybeans harvested	96	91	95	87
Cotton harvested	98	93	96	92
Winter wheat planted	95	85	96	89
Winter wheat emerged	81	65	81	74

MISSOURI WEEKLY HAY SUMMARY 11/16/23

Temperatures continue to be above average and dry. This is allowing for a lot of fall field work now that grain harvest is down to the short rows and is wrapped up for most in the state. Lack of moisture however has all but just a few counties along the southern border in some stage of drought with the latest monitor showing 82 percent of the state. Hay movement is moderate, prices are steady, the supply of hay is light to moderate and demand is moderate.

Alfalfa - Supreme 250.00-300.00, small square 10.00-15.00 per bale

Alfalfa - Premium 200.00-250.00

Alfalfa - Good 150.00-200.00, small square 5.00-10.00 per bale

Alfalfa - Fair 125.00-150.00

Alfalfa/grass mix - Good/Premium small square 5.00-10.00 per bale

Mixed grass - Good/Premium 150.00-225.00

Mixed grass - Fair/Good 100.00-175.00, small square 5.00-8.00 per bale

Mixed grass - Fair 50.00-100.00 per large round bale

Wheat straw - 4.00-7.00 per small square bale

Please Note: The above volumes (tonnage, acres, and bales) listed are for confirmed trades only, it does not include estimated volume (tonnage) for bids or offers to the trade. List your hay for sale at: [Hay Listing Online Form](#). Explanation of Hay Quality Guidelines: [Hay Quality Designation Guidelines](#). Glossary of Terms: [Livestock, Poultry, & Grain Hay Terms](#)

MISSOURI WEEKLY SHEEP/GOAT AUCTION SUMMARY

Week ending 11/17 Receipts: 1,828 Week Ago: 2,363 Last Year: 616
SHEEP: Feeder lambs Small and Medium 1-2 28 lbs 180.00-212.00; 30-40 lbs 210.00-220.00. Small and Medium 1-2 hair 20-30 lbs 285.00-300.00; 30-40 lbs 230.00-265.00, thin 212.50; 40-50 lbs 230.00-265.00, fancy 300.00, thin 175.00; 50-60 lbs 230.00-237.50.
 Slaughter lambs Choice and Prime 1-3 w/s 85-180 lbs 145.00-155.00. Choice and Prime 1-2 woolled 23 hd 69 lbs 232.00. Choice and Prime 1-2 hair 45-80 lbs 200.00-240.00; 80-120 lbs 170.00-210.00. Choice and Prime 1-3 hair 50-60 lbs 237.50-265.00; 60-70 lbs 210.00-235.00; 70-80 lbs 175.00-187.50; 80-90 lbs 165.00-205.00; 90-115 lbs 132.50-177.50. Choice 1-3 hair 50-60 lbs 207.50-237.50; 60-70 lbs 167.50-197.50; 80-90 lbs 147.50-165.00.
 Slaughter ewes Utility and Good 2 100-140 lbs 90.00-110.00. Good 2-3 hair pkg 88 lbs 117.50; 90-165 lbs 90.00-115.00. Utility and Good 1-3 hair 80-150 lbs 70.00-87.50. Cull and Utility 1-2 hair 80-105 lbs 60.00-72.50. Slaughter bucks 1-2 175 lbs 105.00-115.00. Bucks 1-2 hair 145-220 lbs 100.00-122.50.
 Replacement ewes Medium and Large 1-2 2-4 yrs 137 lbs exp 120.00. Medium and Large 2 hair 2-4 yrs 90 lbs exp 125.00 per head. Small and Medium 1-2 hair 1-2 yrs 75-82 lbs exp 127.50-137.50; 2-4 yrs 90-115 lbs exp 112.50-140.00.
GOATS: Feeder kids Selection 1 30-60 lbs 240.00-325.00. Selection 1-2 30-40 lbs 180.00-210.00. Selection 2 30-40 lbs 130.00-270.00; 40-50 lbs 200.00-245.00. Selection 3 30-45 lbs 155.00-195.00.
 Slaughter kids Selection 1 50-75 lbs 262.00-295.00. Selection 1-2 40-50 lbs 200.00-210.00; 50-70 lbs 180.00-230.00; pkg 110 lbs 135.00. Selection 2 40-50 lbs 125.00-145.00; 50-60 lbs 155.00-245.00; 70-80 lbs 145.00-177.50; 80-105 lbs 187.50-225.00. Selection 3 55 lbs 150.00-180.00; 60-80 lbs 162.50-180.00, pygmies 175.00.
 Slaughter nannies/does Selection 1-2 pkg 55 lbs 135.00, pygmies 125.00; 60-70 lbs 100.00-145.00; 70-100 lbs 70.00-120.00; 100-145 lbs 90.00-135.00; 150-175 lbs 110.00-120.00.
 Slaughter bucks/billies Selection 1 160 lbs 155.00-162.00. Selection 1-2 75-85 lbs 95.00-100.00; 90-205 lbs 95.00-170.00.
 Slaughter wethers Selection 1-2 pkg 77 lbs pygmies 185.00; pkg 97 lbs 225.00. Wether kids Selection 1 pkg 81 lbs 270.00. Selection 2 55-75 lbs 202.50-237.50.
 Replacement nannies/does Selection 1-2 1-2 yrs 85-110 lbs exp 140.00-170.00; 2-4 yrs 63 lbs exp 175.00.

Explanatory Notes: Stage - Represents estimated lambing/kidding period (Open, Exp=exposed, Bred, Fall = Sep-Nov, Win = Dec-Feb, Spr = Mar-May, Sum=Jun-Aug; w/s = woolled and shorn; /hd= per head; /fam=per family All price CWT unless otherwise noted.

MISSOURI DROUGHT MONITOR

Date	None	D0	D1	D2	D3	D4
11/21/23	17.23	23.83	36.44	21.59	0.91	0
11/14/23	17.23	27.81	35.93	18.12	0.91	0
11/22/22	12.14	36.90	34.35	13.84	2.77	0

Reflects percentage of Missouri impacted by drought. D0 Abnormally Dry; D1 Moderate Drought; D2 Severe Drought; D3 Extreme Drought; D4 Exceptional Drought

NATIONAL DIRECT DELIVERED FEEDER PIG REPORT

11/24/23 Receipts: 98,497 Week ago: 144,153 Year Ago: 98,153
 Early weaned pigs 1.00/hd higher. Feeder pigs steady to 1.00/hd higher.
 Early weaned pigs 10-12 lbs. basis: Cash 56,000 head 15.00-35.00, weighted average 29.82
 Formula 23,497 head 31.75-65.01, weighted average 48.50
 Feeder pigs 40 pounds basis: Cash 19,000 head 28.00-49.00, weighted average 42.77

NATIONAL DAILY DIRECT PRIOR DAY HOG REPORTS FOR 11/27/23

BARROWS AND GILTS (Carcass Basis): 3,323 head
 Base Carcass Price 55.00-62.00, weighted average 59.88

SOWS (Live Basis): 4,156 head
 300-500 lbs. 27.00-73.00
 Over 500 lbs. 55.00-71.00

MISSOURI WEEKLY DIRECT SLAUGHTER CATTLE REPORT 11/17/23

Weekly Receipts: 0 Week ago: 520 Year ago: 320
 Trading as of Friday morning, trade is inactive as producers are passing lower bids.

LIVE STEERS & HEIFERS: No sales reported
DRESSED STEERS & HEIFERS: No sales reported

GRADE AND WEIGHT (Grid): No sales reported

Click here for the current [National Crop Progress](#)
 Click here for the current [Missouri Crop Progress](#)
 The current hay directory can be found at: [Hay Directory](#).