

Weekly Market Summary

Published by:
Missouri Department of Agriculture
Ag Business Development Division
Market News Program



Chris Chinn, Director
 Jill Wood, Division Director
 Tony Hancock, Editor
[agmarketnews.mo.gov](http://www.ams.usda.gov/marketnews.htm)
<http://www.ams.usda.gov/marketnews.htm>

Michael L. Parson, Governor

Volume XLIII, Number 52 ♦ P.O. Box 630, Jefferson City, MO 65102 ♦ (573) 751-4211 ♦ Tue, Jan 02, 2024

MISSOURI WEEKLY FEEDER CATTLE WEIGHTED AVERAGE REPORT

Receipts: 22,889 Week ago: 30,530 Year ago: 19,877 (w/e 12/23/23)
 Steers and Heifers Medium and Large 1—Weighted average weights and prices

STEERS: Medium and Large 1

323 lbs. 286.82	526 lbs. 284.03	723 lbs. 233.20	917 lbs. 212.14
375 lbs. 300.12	575 lbs. 270.31	765 lbs. 232.77	
424 lbs. 302.83	622 lbs. 247.71	818 lbs. 224.95	
476 lbs. 291.06	673 lbs. 240.15	868 lbs. 217.68	

HEIFERS: Medium and Large 1

331 lbs. 265.04	526 lbs. 234.49	721 lbs. 217.79
384 lbs. 264.41	576 lbs. 234.19	768 lbs. 210.63
426 lbs. 249.95	623 lbs. 223.72	817 lbs. 200.20
477 lbs. 251.00	681 lbs. 219.16	871 lbs. 193.30

MISSOURI STEER (HEIFER) STOCKER FORMULA 12/29/2023

Monday's Missouri Stocker formula consists of **0 (0)** head with a weighted average weight of **0 (0)** lbs. and a price value of **0 (0)**.

Volume and price data limited due to holidays and lack of sale activity. This a rolling seven day calculated weighted value which combines all Feeder Steers reported by MDA/USDA Market News Service weighing from 400-649 lbs. in the Medium and Large 1 and Medium and Large 1-2 frame and muscle classifications, including all comment cattle except Brahman X. Heifer values are in parentheses.

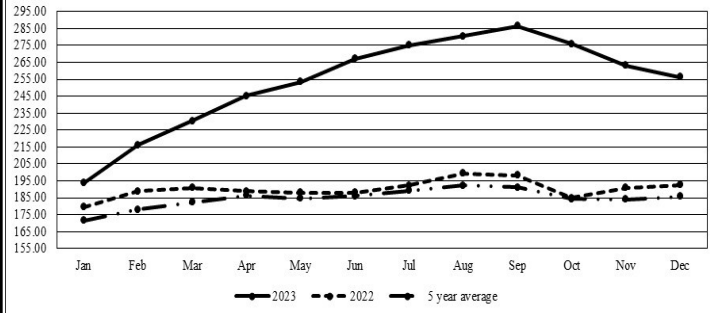
MISSOURI WEEKLY CATTLE AUCTION SUMMARY

(w/e 12/23/23)

Compared to last week, feeders sold mostly 5.00 to 10.00 higher with spots of 15.00 higher. The supply of feeders was moderate as the majority of barns held their last sale of the year. Loads of yearlings outnumbered the supply of calves which is something that hasn't been seen for quite a while, 65 percent of the feeder offering was over 600 lbs. Early week saw very active market activity before business slowed for the holidays. Joplin Regional Stockyards kicked off the week with a big sale that included over 100 full pot loads of cattle. The monthly cattle on feed report was released on Friday. The report was viewed as slightly negative. On feed numbers were just slightly over the top side of pre report estimates and came in at 102.7. Placements were also right near the top of expectations at 98.1 and marketings were near the bottom of estimates at 92.6. A bit of moisture fell late week but in the liquid form right prior to Christmas temperatures were near 60 degrees so no one had to worry about chopping ice Christmas morning this year. A few stick out drafts this week included a load of 652 lbs. fancy steers at Joplin Regional Stockyards which sold for 259.00 another two loads of fancy 703 lb. steers also sold for 252.75. Kingsville Livestock Auction sold a load of 843 lb. steers at 235.50. On the heifer side there was several multi load drafts of light seven weights which sold from 218.00-222.60 with that top being two loads at Lolli Brothers Livestock Market. Boxed beef cutouts closed slightly higher for the week. On Friday choice closed at 292.93, up 1.29 and select closed at 261.15, up 0.33 compared to last week. Negotiated feedlot sales as of the Friday afternoon came in just over 50K head. Live sales were reported from 170.00-172.00 and dressed sales at 270.00-272.00. Missouri Stocker formula consists of 3219 head with a weighted average weight of 551.02 lbs. and a price value of 263.20, 9.01 higher than a week ago. The steer/heifer spread is 34.09.

The Weekly Market Summary, as well as historical summaries, are available on our website <https://agmarketnews.mo.gov/summaries>
 Market News Hotline: 1-573-522-9244

Missouri Stocker Formula - Steers

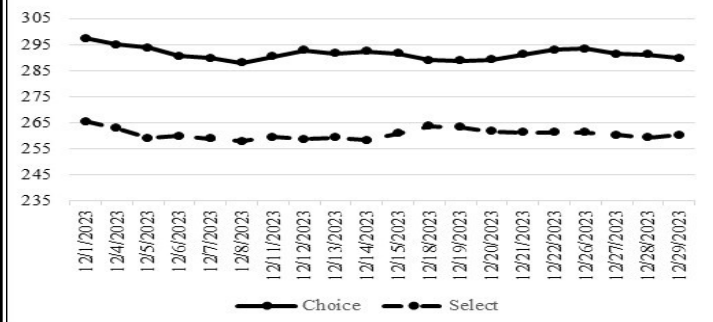


*Graph is updated the first Monday of each month. Axis value ranges may be updated to reflect data points.

NATIONAL BOXED BEEF CUTOUT/BOXED BEEF CUTS

<u>DATE</u>	<u>CHOICE</u>	<u>SELECT</u>	<u>TOTAL LOADS</u>
12/25	-	-	-
12/26	293.31	261.19	69
12/27	291.48	260.32	106
12/28	291.28	259.24	136
12/29	289.71	260.33	94
4 Day Simple Average	291.45	260.27	

Boxed Beef Cuts December 2023



*Axis value ranges may be updated to reflect data points.

WEEKLY LIVESTOCK SLAUGHTER 12/30/23

	<u>CATTLE</u>	<u>HOGS</u>	<u>SHEEP</u>
Week to Date:	508,000	2,233,000	28,000
Last Week:	621,000	2,420,000	34,000
Last Year:	535,000	2,184,000	33,000

SOUTHWEST MISSOURI WEEKLY SUMMARY

(Joplin and Springfield) (w/e 12/23/23)

Receipts: 14,315 Week ago: 12,344 Year Ago: 10,775
Compared to last week, steers 7.00 to 18.00 higher and heifers 5.00 to 17.00 higher. Slaughter cows and bulls steady to 3.00 higher.

FEEDER STEERS:
Medium and Large 1

Table with 2 columns: Weight Range, Price Range. Rows include 300-400 lbs., 400-500 lbs., 500-600 lbs., 600-700 lbs., 700-800 lbs., 800-900 lbs., 900-950 lbs., 15 hd 1111 lbs.

FEEDER HEIFERS:
Medium and Large 1

Table with 2 columns: Weight Range, Price Range. Rows include 300-400 lbs., 400-500 lbs., 500-600 lbs., 600-700 lbs., 700-800 lbs., 800-900 lbs., 13 hd 1053 lbs.

FEEDER HOLSTEIN STEERS
Large 3

Scarce Scarce

SLAUGHTER COWS: Breaking and Boning (70-85% lean) 84.00-98.00, high dressing 95.00-110.00; low dressing 72.00-88.00. Lean (85-90%) 75.00-90.50

SLAUGHTER BULLS: Yield Grade 1-2 1180-2400 lbs. 103.50-119.50; high dressing 116.00-142.00; low dressing 91.50-104.00

BRED COWS: Medium and Large 1 2-4 yrs 1020-1460 lbs 2nd/3rd stage 1900.00-2500.00, fancy 2600.00-2800.00; 2-8 yrs 1085-1495 lbs 2nd/3rd stage 1700.00-2425.00, 1st stage 1700.00-1600.00 per head

BRED HEIFERS: Medium and Large 1 <2 yrs 960-1180 lbs 2nd/3rd stage 2200.00-2600.00, 1st stage 1800.00; 2-4 yrs 77 hd 1085 lbs 2nd/3rd stage 2500.00 per head

COW & CALF PAIRS: Medium and Large 1 2-8 yrs 1050-1120 lbs with <150 to 300 lb calves 2600.00-2750.00; 2-4 yrs 1090 lbs rebred 1st stage with >300 lb calves 3450.00; 2-8 yrs 1085-1120 lbs with >300 lb calves 2700.00-3100.00 per pair

SOUTH CENTRAL MISSOURI WEEKLY SUMMARY

(West Plains, Phillipsburg) (w/e 12/23/23)

Receipts: 1,719 Week ago: 4,175 Year Ago: 2,463
Compared to last week, too few receipts across all weight ranges for an adequate comparison, however undertones were higher. Slaughter cows steady to 2.00 higher. Slaughter bulls steady.

FEEDER STEERS:
Medium and Large 1

Table with 2 columns: Weight Range, Price Range. Rows include 300-400 lbs., 400-500 lbs., 500-600 lbs., 600-700 lbs., 750-800 lbs., 18 hd 855 lbs.

FEEDER HEIFERS:
Medium and Large 1

Table with 2 columns: Weight Range, Price Range. Rows include 300-400 lbs., 400-500 lbs., 16 hd 532 lbs., 600-700 lbs., Pkg 720 lbs., 21 hd 850 lbs.

FEEDER HOLSTEIN STEERS
Large 3

Scarce Scarce

SLAUGHTER COWS: Breaking and Boning (70-85% lean) 82.50-94.00, high dressing 93.00-105.00; low dressing 77.50-83.00. Lean (85-90%) 73.00-85.00

SLAUGHTER BULLS: Yield Grade 1-2 1220-2165 lbs. 102.00-114.00; high dressing 114.00-130.00; low dressing 81.00-100.00

BRED COWS: Medium and Large 1-2 2-8 yrs 1085-1375 lbs 1st to 3rd stage 1200.00-1775.00 per head

BRED HEIFERS: Medium and Large 1-2 <2 yrs 975 lbs 1st to 3rd stage 1100.00 per head

COW & CALF PAIRS: Medium and Large 1-2 2-8 yrs 1150-1320 lbs with 150-300 lb calves 1500.00-1650.00 per pair

WEST CENTRAL MISSOURI WEEKLY SUMMARY

(Kingsville, Windsor, Butler) (w/e 12/23/23)

Receipts: 3,884 Week ago: 8,743 Year ago: 3,518
Compared to last week, feeders sold steady to 15.00 higher, slaughter cows steady to 5.00 higher.

FEEDER STEERS:
Medium and Large 1

Table with 2 columns: Weight Range, Price Range. Rows include 350-400 lbs., 400-500 lbs., 500-600 lbs., 600-700 lbs., 700-800 lbs., 800-900 lbs.

FEEDER HEIFERS:
Medium and Large 1

Table with 2 columns: Weight Range, Price Range. Rows include 300-400 lbs., 400-500 lbs., 500-600 lbs., 600-700 lbs., 700-800 lbs., 13 hd 882lbs.

SLAUGHTER BULLS: Yield Grade 1-2 1180-2255 lbs 104.00-115.50; high dressing 116.00-127.00; low dressing 82.50-102.00.

SLAUGHTER COWS: Breaking and Boning (70-85% lean) 82.00-103.00, high dressing 95.50-108.00; low dressing 70.00-89.00. Lean (85-90%) 69.00-83.00

BRED COWS: Medium and Large 1-2 2-8 yrs 1080-1250 lbs 2nd/3rd stage 1525.00-1710.00 per head

COW & CALF PAIRS: Medium and Large 1-2 5-8 yrs 1085-1413 lbs with 150-300 lb calves 1510.00 -1825.00 per pair

NORTHEAST MISSOURI WEEKLY SUMMARY

(Bowling Green, Kingdom City, Palmyra) (w/e 12/23/23)

Receipts: 2,185 Week ago: 4,186 Year ago:
Compared to last week, calves under 600 lbs steady to firm, 700-800 lb steers firm to 10.00 higher, over 800 lbs higher undertone. Heifers over 600 lbs higher undertone. Slaughter cows steady to 5.00 higher.

FEEDER STEERS:
Medium and Large 1

Table with 2 columns: Weight Range, Price Range. Rows include 400-500 lbs., 500-600 lbs., 600-700 lbs., 700-800 lbs., 900-950 lbs.

FEEDER HEIFERS:
Medium and Large 1

Table with 2 columns: Weight Range, Price Range. Rows include 350-400 lbs., 400-500 lbs., 500-600 lbs., 600-650 lbs., 14 hd 705 lbs.

SLAUGHTER BULLS: Yield Grade 1-2 1390-2425 lbs 104.00-118.00; low dressing 93.00-106.00

SLAUGHTER COWS: Breaking and Boning, (70-85% lean) 76.00-97.00; high dressing 84.00-106.00; low dressing 66.00-87.50. Lean (85-90%) 68.00-87.50

SLAUGHTER STEERS: Choice 2 -3 165.00-170.00. Select and Choice 1-3 163.00

SLAUGHTER HEIFERS: Scarce

BRED COWS: Scarce

COW/CALF PAIRS: Scarce

NORTH CENTRAL MISSOURI WEEKLY SUMMARY

(Macon, Unionville, Green City, New Cambria) (w/e 12/23/23)

Receipts: 2,799 Week ago: 3,857 Year ago: 1,304
*Some sale barns on a bi-weekly schedule and may not have a sale each week.
Compared to last week feeders sold steady to firm with a good offering of 700-750 lbs steers up to 10.00 higher. Slaughter cows steady.

FEEDER STEERS:
Medium and Large 1

Table with 2 columns: Weight Range, Price Range. Rows include 400-500 lbs., 500-600 lbs., 600-700 lbs., 700-750 lbs.

FEEDER HEIFERS:
Medium and Large 1

Table with 2 columns: Weight Range, Price Range. Rows include 400-500 lbs., 500-600 lbs., 600-700 lbs., 700-750 lbs.

SLAUGHTER BULLS: Yield Grade 1-2 101.50-118.00, high dressing 12.00-123.50

SLAUGHTER COWS: Breaking and Boning, (70-85% lean) 80.00-98.00, high dressing 94.00-108.00. Lean (85-90%) 74.00-87.50

BRED COWS: Scarce

COW & CALF PAIRS: Scarce

SOUTHEAST MISSOURI WEEKLY SUMMARY

(Jackson and Farmington) (w/e 12/23/23)

Receipts: 922 Week ago: 1,078 Year ago: 501
 Compared to last week, feeders sold steady to as much as 19.00 higher.
 Slaughter cows and bulls steady to 3.00 higher.

FEEDER STEERS:

Medium and Large 1

300-400 lbs.	250.00-294.00
400-500 lbs.	250.00-277.00
500-600 lbs.	235.00-274.00
600-700 lbs.	220.00-250.00
700-800 lbs.	202.00-229.00

FEEDER HEIFERS:

Medium and Large 1

300-400 lbs.	220.00-250.00
400-500 lbs.	215.00-247.00
500-600 lbs.	200.00-245.00
600-700 lbs.	195.00-218.00
700-800 lbs.	175.00-205.00

SLAUGHTER BULLS: Yield Grade 1-2 1060-2175 lbs 85.00-105.50; high dressing 105.00-114.00; low dressing 70.00-85.00

SLAUGHTER COWS: Breaking and Boning (75-85% lean) 74.00-88.00; high dressing 87.00-108.00. Lean (85-90% lean) 66.00-78.00

BRED COWS: Medium and Large 2 2-8 yrs 1095-1345 lbs 1st to 3rd stage 1075.00-1450.00 per head

COW & CALF PAIRS: Scarce

EAST CENTRAL MISSOURI WEEKLY SUMMARY

(Cuba, Vienna) (w/e 12/23/23)

Receipts: 1,533 Week ago: 3,186 Year ago: 584
 Compared to last week, feeder under 550 lbs firm to 6.00 higher, over 6.00-10.00 higher. Slaughter cows steady to 9.00 higher.

FEEDER STEERS:

Medium and Large 1

400-500 lbs.	273.00-291.00
500-600 lbs.	256.00-270.00
600-700 lbs.	230.00-250.00
700-800 lbs.	220.00-234.75

FEEDER HEIFERS:

Medium and Large 1

400-500 lbs.	230.00-255.00
500-600 lbs.	222.00-245.00
600-700 lbs.	206.00-226.00
Pkg 858 lbs.	179.00

SLAUGHTER BULLS: Yield Grade 1-2 1305-2230 lbs 98.00-117.50; couple high dressing 123.00-132.00; low dressing 78.00-106.00

SLAUGHTER COWS: Breaking and Boning, (70-85% lean) 84.00-97.00; high dressing 90.00-104.50; low dressing 78.50-89.50. Lean (85-90%) 79.00-91.50

BRED COWS: Medium and Large 1-2 5-8 yrs 1110-1390 lbs 1st to 3rd stage 1400.00-2025.00; >8 yrs 1387 lbs 2nd stage 1400.00 per head

COW & CALF PAIRS: Medium and Large 1-2 5-8 yrs 1080-1275 lbs with 150 to >300 lb calves 2025.00-2925.00 per pair

NORTHWEST MISSOURI WEEKLY SUMMARY

(Tina) (w/e 12/23/23)

Receipts: 2,092 Week Ago: 1,780 Year Ago: 1,975
 Compared to last week, weaned and vaccinated feeders sold 10.00-15.00 higher, unweaned or fleshy cattle steady to firm. Slaughter cows and bulls steady to 3.00 higher.

FEEDER STEERS:

Medium and Large 1

400-500 lbs.	287.50-309.00
500-600 lbs.	269.00-297.00
600-700 lbs.	230.75-270.00
700-750 lbs.	224.00-225.00
800-850 lbs.	207.00-223.75

FEEDER HEIFERS:

Medium and Large 1

350-400 lbs.	260.00-274.00
400-500 lbs.	244.00-270.00
500-600 lbs.	220.00-253.50
600-700 lbs.	225.50-233.25
700-800 lbs.	190.00-218.00

SLAUGHTER BULLS: Yield Grade 1-2 1200-2210 lbs 92.00-111.50

SLAUGHTER COWS: Breaking and Boning, (70-85% lean) 83.00-99.00; high dressing couple 100.00-101.50; low dressing couple 80.00. Lean (85-90%) 77.00-90.50

BRED COWS: Scarce

COW & CALF PAIRS: Scarce

AFTERNOON NATIONAL SLAUGHTER CATTLE REVIEW

Thus far for Friday in the Texas Panhandle negotiated cash was slow on light demand. The most recent market in the Texas Panhandle was Thursday with live FOB at 172.00. In the Kansas negotiated cash was slow on light to moderate demand. The most recent market in Kansas was Thursday live FOB purchases at 172.00. In the Nebraska negotiated cash was slow on light demand. The most recent market was Thursday with live FOB purchases from 172.00-173.00, with dressed delivered purchases at 273.00. In the Western Cornbelt negotiated cash was slow on light demand. The most recent market in the Western Cornbelt was Thursday with live FOB purchases at 172.00, dressed delivered purchases at 273.00, on a light test.

Negotiated Cash Sales:

Confirmed:	9,909	Week Ago:	18,286	Year Ago:	22,837
Week to date:	59,225	Week Ago:	50,081	Year Ago:	57,542

<u>Live Basis</u>	<u>Steers</u>	<u>Heifers</u>
Over 80% Choice	172.00-174.00, avg 172.49	172.00-174.00, avg 173.06
65-80% Choice	173.00	172.50-173.00, avg 172.83
35-65% Choice	173.00	-
0-35% Choice	-	-
Total All Grades	172.00-174.00, avg 172.80	172.00-174.00, avg 172.96
<u>Dressed Basis</u>		
Over 80% Choice	270.00-273.00, avg 272.80	273.00
65-80% Choice	-	273.00
35-65% Choice	-	-
0-35% Choice	-	-
Total All Grades	270.00-273.00, avg 272.80	273.00

<u>All Beef Type Steers/Heifers</u>	<u>Head</u>	<u>Avg Wt</u>	<u>Price Range</u>	<u>Wtd Avg</u>
Live FOB	8,164	1402.6	171.00-174.00	173.06
Live Del	80	1270.0	171.00-172.00	171.45
Dressed Del	1,328	927.7	270.00-273.00	272.89
Dressed FOB	337	872.1	274.00	274.00

WEEKLY COMMODITY FUTURES TRENDS

Compared to last week, Live Cattle Dec 3.62 higher, others 0.07 lower to 0.13 higher, Lean Hogs 2.00 to 3.38 lower, Feeder Cattle 1.30 lower to 0.62 higher, except Aug 2.23 higher.

Daily Futures Closes

	Mon.	Tues.	Wed.	Thu.	Fri.
Cattle					
Dec	Holiday	170.57	170.72	171.20	173.67
Feb		170.40	169.27	168.92	168.50
Apr		173.45	172.97	172.27	172.25
Jun		171.00	170.70	170.15	170.05
Aug		171.80	171.57	171.07	171.02
Lean Hogs					
Feb	Holiday	69.30	69.87	68.45	67.97
Apr		76.07	75.92	75.00	74.85
May		82.80	82.60	81.42	81.50
Jun		91.37	90.95	90.00	89.92
Jul		93.10	92.85	92.02	91.95
Fdr Cat					
Jan	Holiday	223.55	224.47	222.47	222.30
Mar		224.57	225.40	223.12	223.10
Apr		230.07	230.90	228.92	228.90
May		235.00	235.80	234.45	234.57
Aug		246.50	249.87	249.15	249.85
Milk					
Dec	Holiday	16.10	16.12	16.11	16.10
Jan		15.54	15.69	15.40	15.43
Feb		15.73	15.89	15.69	15.74

WEEKLY COMMODITY GRAIN FUTURES TRENDS

Compared to last week, Soybeans 0.07 to 0.11 lower, Wheat 0.10 to 0.12 higher, Corn 0.01 to 0.02 lower, KC Wheat 0.12 to 0.19 higher, Soybean Meal 2.60 to 13.60 lower.

Daily Grain Futures Closes

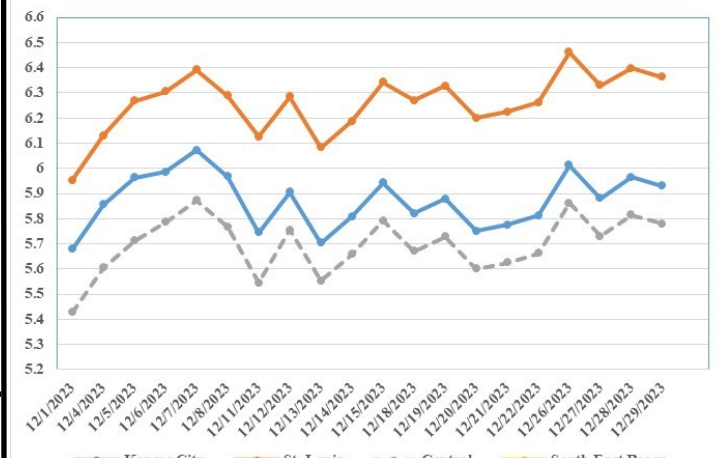
	Mon.	Tues.	Wed.	Thu.	Fri.
Soybeans					
Jan	Holiday	1313 1/4	1316 3/4	1305 1/4	1293 1/2
Mar		1319	1320 1/2	1312	1298
May		1328	1329 1/2	1321 1/2	1307 1/4
Jul		1332	1333 3/4	1326 1/4	1313
Aug		1313 1/4	1314	1307	1294 3/4
Wheat					
Mar	Holiday	636 1/4	623	631 1/2	628
May		646 1/4	633 3/4	642 1/4	639 1/2
Jul		653	639 1/2	647 3/4	645 3/4
Sep		663 1/2	649 3/4	657 1/2	656 1/4
Dec		676 1/2	662 1/2	669 3/4	669
Corn					
Mar	Holiday	408 1/4	476 1/2	474 1/4	471 1/4
May		492 1/4	488 1/2	486 1/2	484
Jul		501 1/2	498	496	494
Sep		503 1/2	500 1/4	498 1/2	497
Dec		509 1/2	506 1/2	504 3/4	503 1/2
KC Wheat					
Mar	Holiday	642 3/4	635	643 3/4	642
May		645 3/4	637 1/2	645	644
Jul		650 1/4	640	646 1/4	646
Sep		662 1/4	651 1/4	656 3/4	656 1/2
Dec		677	665 1/4	670 1/4	670
SB Meal					
Jan	Holiday	403.20	398.90	393.00	386.00
Mar		395.50	393.80	390.70	386.00
May		392.70	391.80	389.30	384.80
Jul		393.20	392.90	390.50	386.00
Aug		390.50	390.40	388.20	383.90

MONTHLY GRAIN CROP

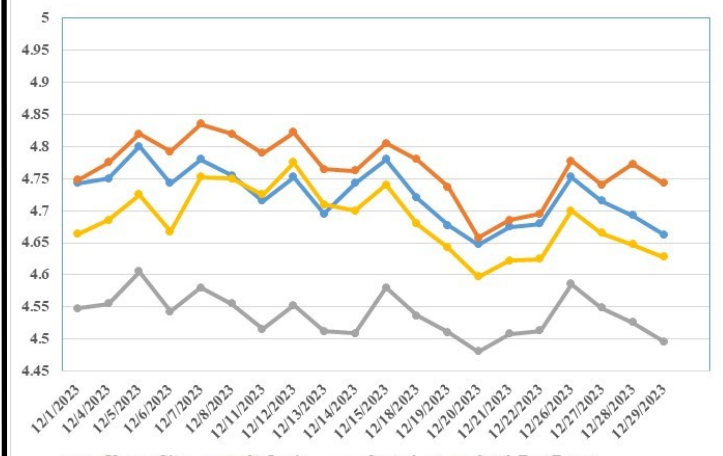
December 2023 Soybean Bids



December 2023 Wheat Bids



December 2023 Corn Bids



*Axis value ranges may be updated to reflect data points.

MISSOURI GRAIN WEEKLY TRENDS

Compared to last week, Soybeans steady to 0.05 lower, Wheat 0.12 higher, Corn 0.02 lower to 0.05 higher, Sorghum 0.02 lower.

Area	#1 Soybeans	#2 Soft Wheat	#2 Corn	#2 Grain Sorghum
Kansas City				
Friday**	12.79-13.14	5.81	4.58-4.78	5.03
Monday	Holiday			
Tuesday	12.93-13.28	6.01	4.65-4.85	5.10
Wednesday	12.96-13.31	5.88	4.61-4.81	5.06
Thursday	12.85-13.20	5.97	4.59-4.79	5.04
Friday	12.74-13.09	5.93	4.56-4.76	5.01
St. Louis				
Friday**	13.30-13.33	6.06-6.36	4.68-4.71	4.98
Monday	Holiday			
Tuesday	13.47	6.26-6.56	4.75-4.80	5.05
Wednesday	13.50	6.13-6.43	4.71-4.76	5.01
Thursday	13.40	6.22-6.52	4.76-4.78	4.99
Friday	13.30	6.18-6.48	4.73-4.75	4.96
Central				
Friday**	12.59-12.69	5.66	4.48-4.78	---
Monday	Holiday			
Tuesday	12.73-12.83	5.86	4.55-4.60	---
Wednesday	12.76-12.86	5.73	4.51-4.56	---
Thursday	12.65-12.75	5.82	4.49-4.54	---
Friday	12.54-12.64	5.78	4.46-4.51	---
S.E. MO				
Friday**	13.07-13.19	---	4.57-4.58	---
Monday	Holiday			
Tuesday	13.21-13.33	---	4.64-4.75	---
Wednesday	13.24-13.36	---	4.61-4.71	---
Thursday	13.12-13.25	---	4.58-4.69	---
Friday	13.02-13.19	---	4.59-4.66	---

(PRICES PER BUSHEL) *NEW CROP **PREVIOUS WEEK'S PRICES
*Bids calculated using Kansas City, St. Louis, and St. Joseph bids

WHOLESALE FEEDSTUFFS PRICES (DOLLARS PER TON-BULK BASIS) 12/22/23

Area	Soybean Hulls Pellets	Soybean Meal 46.5-48%	Corn Gluten Pellets 21%	Wheat Middlings
Kansas City	177.50	439.60	267.50	180.00
St. Louis	n/a	n/a	255.00	166.00

AGRICULTURAL PRICES

November Prices Received Index Down 0.1 Percent

The November Prices Received Index 2011 Base (Agricultural Production), at 113.2, decreased 0.1 percent from October and 15 percent from November 2022. At 99.8, the Crop Production Index is down 3.0 percent from last month and 20 percent from the previous year. The Livestock Production Index, at 134.0, increased 0.6 percent from October, but decreased 6.7 percent from November last year. Producers received lower prices during November for corn, hogs, cattle, and turkeys but higher prices for market eggs, soybeans, strawberries, and lettuce. In addition to prices, the volume change of commodities marketed also influences the indexes. In November, there was decreased marketing of soybeans, grapes, wheat, and dry beans but increased monthly movement for corn, cattle, milk, and cotton.

November Prices Paid Index Down 0.4 Percent

The November Prices Paid Index for Commodities and Services, Interest, Taxes, and Farm Wage Rates (PPITW), at 138.4, is down 0.4 percent from October and 0.3 percent from November 2022. Lower prices in November for feeder cattle, diesel, feed grains, and supplements more than offset higher prices for nitrogen, concentrates, repairs, and complete feeds.

Prices Received, Prices Paid, and Ratio of Prices Received to Prices Paid Indexes 2011 Base – United States: November 2023 with Comparisons

<u>Index Group</u>	<u>Nov 2022 (percent)</u>	<u>Oct 2023 (percent)</u>	<u>Nov 2023 (percent)</u>
Prices received by farmers	132.4	113.3	113.2
Prices paid by farmers	138.8	138.9	138.4
Ratio of prices received to prices paid	95	81	82

MISSOURI WEEKLY HAY SUMMARY 12/21/23

Winter has officially arrived however this years arrival is much milder than a year ago when temperatures were in the negatives with extreme wind chills. Although feeding is occurring for nearly everyone now, livestock producers are appreciative of the lack of any major or prolonged winter type weather so far. Hay movement remains active and demand is good. The supply of hay is light to moderate, and prices mostly steady. The Missouri Department of Agriculture has a hay directory at <https://apps.mda.mo.gov/haydirectory> or visit the University of Missouri Extension feed stuff finder at <https://feedstufffinder.org>

- Alfalfa - Supreme 250.00-300.00, small square 10.00-15.00 per bale
- Alfalfa - Premium 200.00-250.00
- Alfalfa - Good 150.00-200.00, small square 5.00-10.00 per bale
- Alfalfa - Fair 125.00-150.00
- Alfalfa/grass mix - Good/Premium small square 5.00-10.00 per bale
- Mixed grass - Good/Premium 150.00-225.00
- Mixed grass - Fair/Good 100.00-175.00, small square 5.00-8.00 per bale
- Mixed grass - Fair 50.00-100.00 per large round bale
- Wheat straw - 4.00-7.00 per small square bale

Please Note: The above volumes (tonnage, acres, and bales) listed are for confirmed trades only, it does not include estimated volume (tonnage) for bids or offers to the trade. List your hay for sale at: [Hay Listing Online Form](#). Explanation of Hay Quality Guidelines: [Hay Quality Designation Guidelines](#). Glossary of Terms: [Livestock, Poultry, & Grain Hay Terms](#)

MISSOURI WEEKLY SHEEP/GOAT AUCTION SUMMARY

Receipts: 3,054 Week Ago: 1,356 Last Year: 641

SHEEP: Feeder Lambs Small and Medium 1-2 25-40 lbs 245.00-370.00; 40-50 lbs 260.00-315.00. Slaughter Lambs: woolled and shorn Choice and Prime 1-3 95-101 lbs 147.00-180.00. Choice 1-3 132 lbs 95.00. hair Choice and Prime 1-3 50-60 lbs 272.50-320.00; 60-70 lbs 247.50-305.00; 70-80 lbs 205.00-270.00; 80-90 lbs 187.50-237.50. Choice 1-3 50-85 lbs 210.00-255.00. Good 1-2 50-60 lbs 205.00-225.00; 60-85 lbs 160.00-185.00. Ewes: Good 2-3 100-150 lbs 85.00-90.00. Utility and Good 1-3 100-180 lbs 70.00-85.00. Hair Ewes: Good 2-3 80-150 lbs 100.00-115.00. Utility and Good 1-3 80-135 lbs 75.00-90.00. Cull and Utility 1-2 80-90 lbs 65.00-70.00. Hair Bucks 100-150 lbs 120.00-125.00; 175-220 lbs 105.00-125.00.

GOATS: Feeder Kids Selection 1 28-46 lbs 265.00-340.00, replacement 360.00-370.00. Selection 2 29-50 lbs 200.00-270.00. Selection 3 40-45 lbs 120.00-175.00. Slaughter Kids Selection 1 50-80 lbs 262.50-322.50. Selection 2 50-80 lbs 197.50-260.00. Selection 3 50-65 lbs 190.00, pygmies 150.00-177.50. Nannies Selection 1-2 70-160 lbs 90.00-135.00. Billies Selection 1-2 85-200 lbs 100.00-235.00. Wethers Selection 1-2 85-110 lbs 220.00-260.00. Wether Kids Selection 1 50-100 lbs 265.00-310.00.

Explanatory Notes: Stage - Represents estimated lambing/kidding period (Open, Exp=exposed, Bred, Fall = Sep-Nov, Win = Dec-Feb, Spr = Mar-May, Sum=Jun-Aug; w/s = woolled and shorn; /hd= per head; /fam=per family All price CWT unless otherwise noted.

MISSOURI DROUGHT MONITOR

<u>Date</u>	<u>None</u>	<u>D0</u>	<u>D1</u>	<u>D2</u>	<u>D3</u>	<u>D4</u>
12/26/23	6.73	21.19	41.91	29.08	1.09	0
12/19/23	0.75	15.47	41.73	40.78	1.27	0
12/27/22	36.43	32.71	29.03	1.83	0	0

Reflects percentage of Missouri impacted by drought. D0 Abnormally Dry; D1 Moderate Drought; D2 Severe Drought; D3 Extreme Drought; D4 Exceptional Drought

NATIONAL DIRECT DELIVERED FEEDER PIG REPORT

12/29/23 Receipts: 105,095 Week ago: 149,999 Year Ago: 83,796
Early weaned pigs steady and feeder pigs steady to 1.00 lower.
Early weaned pigs 10-12 lbs. basis: Cash 61,227 head 22.00-40.00, weighted average 34.94
Formula 39,168 head 34.10-52.26, weighted average 42.41
Feeder pigs 40 pounds basis: Cash 4,700 head 46.00-50.00, weighted average 47.02

NATIONAL DAILY DIRECT PRIOR DAY HOG REPORTS FOR 12/29/23

BARROWS AND GILTS (Carcass Basis): 2,130 head
Base Carcass Price 41.00-48.00, weighted average 45.88

SOWS (Live Basis): 7,816 head
300-500 lbs. 19.00-50.50
Over 500 lbs. 34.00-51.50

MISSOURI WEEKLY DIRECT SLAUGHTER CATTLE REPORT 12/29/23

Weekly Receipts: 320 Week ago: 200 Year ago: 320
Trading as of Friday morning, flat dressed sales 3.00 higher and grid dressed sales 5.00 higher.

LIVE STEERS & HEIFERS: **DRESSED STEERS & HEIFERS:**
No sales reported 5 loads flat Thu 273.00

GRADE AND WEIGHT (Grid): late last Fri 3 loads 279.00.

Click here for the current [National Crop Progress](#)
Click here for the current [Missouri Crop Progress](#)
The current hay directory can be found at: [Hay Directory](#).