

# Weekly Market Summary

Published by:  
**Missouri Department of Agriculture**  
**Ag Business Development Division**  
**Market News Program**



Chris Chinn, Director  
 Jill Wood, Division Director  
 Tony Hancock, Editor  
<http://www.ams.usda.gov/marketnews.htm>  
<http://www.ams.usda.gov/marketnews.htm>

Michael L. Parson, Governor

Volume XLIV, Number 17 ♦ P.O. Box 630, Jefferson City, MO 65102 ♦ (573) 751-4211 ♦ Mon, Apr 29, 2024

## MISSOURI WEEKLY FEEDER CATTLE WEIGHTED AVERAGE REPORT

Feeder Cattle Receipts: 25,967 Week ago: 26,683 Year ago: 28,085  
 Steers and Heifers Medium and Large 1—Weighted average weights and prices

### STEERS: Medium and Large 1

285 lbs. 350.85	474 lbs. 342.58	673 lbs. 278.64	883 lbs. 237.37
326 lbs. 369.48	526 lbs. 325.51	715 lbs. 264.91	928 lbs. 222.19
375 lbs. 359.29	572 lbs. 314.50	773 lbs. 250.47	978 lbs. 219.23
426 lbs. 352.02	624 lbs. 295.95	820 lbs. 244.75	

### HEIFERS: Medium and Large 1

263 lbs. 329.20	476 lbs. 304.49	676 lbs. 244.71	873 lbs. 208.29
330 lbs. 327.61	525 lbs. 283.91	732 lbs. 240.26	925 lbs. 206.57
377 lbs. 326.82	569 lbs. 269.56	770 lbs. 232.90	953 lbs. 214.00
426 lbs. 313.74	622 lbs. 256.27	824 lbs. 217.20	

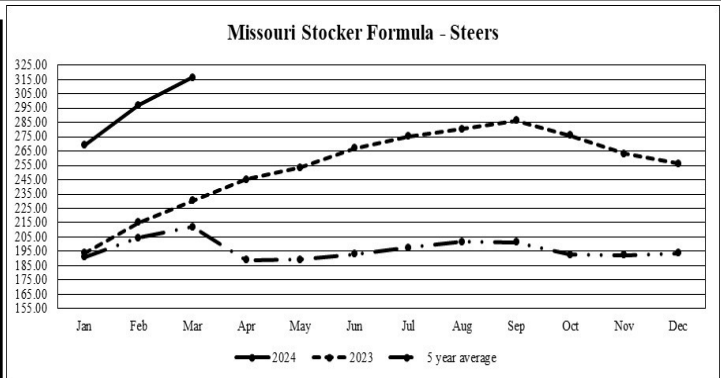
## MISSOURI STEER (HEIFER) STOCKER FORMULA 04/29/2023

Monday's Missouri Stocker formula consists of **5,374 (5,057)** head with a weighted average weight of **537.27 (525.95)** lbs. and a price value of **315.42 (278.42)**, 5.71 higher (5.27 higher) than last week. This a rolling seven day calculated weighted value which combines all Feeder Steers reported by MDA/USDA Market News Service weighing from 400-649 lbs. in the Medium and Large 1 and Medium and Large 1-2 frame and muscle classifications, including all comment cattle except Brahman X. Heifer values are in parentheses.

## MISSOURI WEEKLY CATTLE AUCTION SUMMARY

Total Receipts: 32,408 Week Ago: 35,524 Year Ago: 34,671

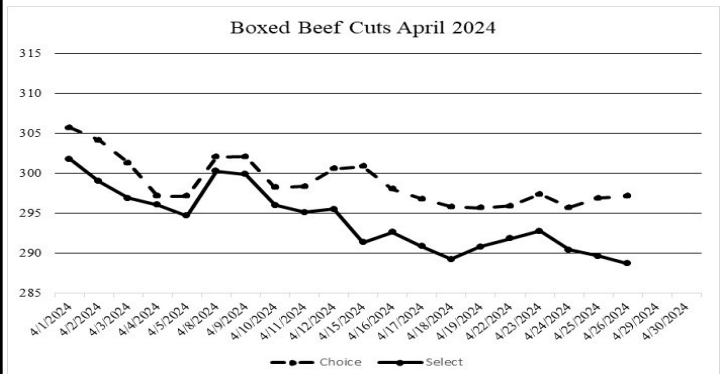
Compared to last week, feeders sold 2.00 to 7.00 higher. The supply of feeders was moderate with a good selection of feeders across all weight ranges this week. Demand was good. Moisture finally arrived over the last week with totals varying widely. Some areas in the southeast only reported about an inch while some of the most extreme amounts were reported in west central and surpassed ten inches over the last week. Although ten inches was a bit much the moisture has been greatly needed and despite some flooding will go along ways towards helping improve what have been very dry soils in the state. Prior to being put on hold because of the rain spring field work had been running at full steam. As of the last report planting was well ahead of the five-year average for both beans and corn. Haying was taking place in several areas although most was early type hay that was being wrapped and not put up dry. A few notable sales this week included a part load of 472 lb. steers at Kingsville Livestock Auction which sold for 370.00. Ozarks Regional Stockyards sold 49 head of 500 lb. steers for 362.00. Windsor Livestock Auction sold 31 head of 709 lb. steers for 280.00. a full load of 811 lb. steers sold at Callaway Livestock Center for 254.60. Kingsville Livestock Auction sold a load of 731 lb. heifers for 251.25. Boxed beef cutouts values were mixed for the week. Choice closed on Friday at 297.14, up 1.47 and select closed at 288.72, down 2.11 compared to last week. Negotiated feedlot sales as of the Friday afternoon report totaled about 84K head, sales in the southern plains were mostly steady, sales in the North were higher for the week. Live sales were reported at 182.00-187.00 and Dressed sales at 294.00-295.00. Missouri Stocker formula consists of 5,374 head with a weighted average weight of 537.27 lbs. and a price value of 315.42, 5.71 higher than a week ago. The steer/heifer spread is 37.00.



\*Graph is updated the first Monday of each month. Axis value ranges may be updated to reflect data points.

## NATIONAL BOXED BEEF CUTOFF/BOXED BEEF CUTS

<u>DATE</u>	<u>CHOICE</u>	<u>SELECT</u>	<u>TOTAL LOADS</u>
4/22	295.93	291.87	104
4/23	297.40	292.76	147
4/24	295.74	290.42	148
4/25	295.66	288.41	133
4/26	297.14	288.72	125
<b>5 Day Simple Average</b>	296.63	290.69	



\*Axis value ranges may be updated to reflect data points.

## WEEKLY LIVESTOCK SLAUGHTER 04/27/24

	<u>CATTLE</u>	<u>HOGS</u>	<u>SHEEP</u>
Week to Date:	601,000	2,375,000	34,000
Last Week:	600,000	2,420,000	36,000
Last Year:	604,928	2,333,025	32,583

The Weekly Market Summary, as well as historical summaries, are available on our website <https://agmarketnews.mo.gov/summaries>  
 Market News Hotline: 1-573-522-9244

**SOUTHWEST MISSOURI WEEKLY SUMMARY**

(Joplin and Springfield)

Receipts: 9,735 Week ago: 11,595 Year Ago: 11,565  
Compared to last week, steers and heifers 3.00 to 10.00 higher, spots 20.00 higher on steers late week. Slaughter cows steady to 4.00 lower. Slaughter bulls steady to 4.00 higher.

**FEEDER STEERS:**  
Medium and Large 1

Table with 2 columns: Weight (300-400 lbs to 900-1000 lbs) and Price Range (360.00-412.50 to 216.00-224.00)

**FEEDER HEIFERS:**  
Medium and Large 1

Table with 2 columns: Weight (300-400 lbs to 900-950 lbs) and Price Range (307.50-355.00 to 191.00-204.75)

**FEEDER HOLSTEIN STEERS**  
Large 3

Table with 2 columns: Weight (300-400 lbs to 900-1000 lbs) and Price Range (220.00-250.00 to 183.00-189.00)

**SLAUGHTER COWS:** Breaking and Boning (70-85% lean) 117.00-134.00, high dressing 127.00-145.00; low dressing 106.00-122.00. Lean (85-90%) 108.00-124.00.

**SLAUGHTER BULLS:** Yield Grade 1-2 1195-2280 lbs. 148.00-168.00; high dressing 168.00-192.00; low dressing 135.00-148.00

**BRED COWS:** Medium and Large 1 2-8 yrs 1195-1435 lbs 2nd/3rd stage 1750.00-2350.00; >8 yrs 1370 lbs 2nd/3rd stage 1650.00. Medium and Large 1-2 2-8 yrs 860-1370 lbs 2nd/3rd stage 1300.00-1775.00, 1st stage 1310.00-1475.00 per head

**BRED HEIFERS:** Medium 1-2 <2 yrs 874 lbs 2nd/3rd stage 1800.00 per head

**COW & CALF PAIRS:** Medium and Large 1 2-8 yrs 1213-1423 lbs with baby to >300 lb calves 2525.00-2700.00. Medium and Large 1-2 1120-1350 lbs with 150 >300 lb calves 1900.00-2550.00; >8 yrs 1070-1388 lbs with baby to 300 lb calves 1950.00-2250.00 per pair

**SOUTH CENTRAL MISSOURI WEEKLY SUMMARY**

(West Plains, Phillipsburg)

Receipts: 4,781 Week ago: 3,228 Year Ago: 4,871  
Compared to last week, steers steady to 10.00 higher and heifers uneven from 8.00 lower to 6.00 higher, with the decline late week. Slaughter cows uneven from 4.00 lower to 4.00 higher. Slaughter bulls steady to 5.00 higher.

**FEEDER STEERS:**  
Medium and Large 1

Table with 2 columns: Weight (300-400 lbs to 900-1000 lbs) and Price Range (350.00-390.00 to 220.50-221.75)

**FEEDER HEIFERS:**  
Medium and Large 1

Table with 2 columns: Weight (300-400 lbs to 800-900 lbs) and Price Range (307.50-335.00 to 209.00-225.00)

**FEEDER HOLSTEIN STEERS:**  
Large 3

Scarce Scarce

**SLAUGHTER COWS:** Breaking and Boning (70-85% lean) 114.00-127.00, high dressing 124.00-136.50; low dressing 94.00-116.00. Lean (85-90%) 104.00-118.50

**SLAUGHTER BULLS:** Yield Grade 1-2 1215-2345 lbs. 142.00-164.00; high dressing 165.00-187.00; low dressing 118.00-143.00

**BRED COWS:** Medium and Large 1-2 2-8 yrs 1098-1500 lbs 2nd/3rd stage 1625.00-2350.00, 1st stage 1500.00-1750.00; >8 yrs 1228 lbs 2nd/3rd stage 1525.00 per head

**COW & CALF PAIRS:** Medium and Large 1-2 2-8 yrs 1050-1580 lbs with 150-300 lb calves 2250.00-2575.00; >8 yrs 1130 lbs with 150-300 lb calves 2000.00 per pair

**WEST CENTRAL MISSOURI WEEKLY SUMMARY**

(Kingsville, Windsor, Butler)

Receipts: 6,450 Week ago: 5,486 Year ago: 6,148  
Compared to last week, steers and heifers steady to 8.00 higher, spots 10.00 to 15.00 higher on calves. Slaughter cows steady to 5.00 lower.

**FEEDER STEERS:**  
Medium and Large 1

Table with 2 columns: Weight (400-500 lbs to 950-1000 lbs) and Price Range (322.50-390.00 to 209.50-213.85)

**FEEDER HEIFERS:**  
Medium and Large 1

Table with 2 columns: Weight (400-500 lbs to 900-1000 lbs) and Price Range (288.00-330.00 to 200.00-215.00)

**SLAUGHTER BULLS:** Yield Grade 1-2 1280-2095 lbs 139.00-155.00; high dressing 159.00-171.00; low dressing 120.00-135.00

**SLAUGHTER COWS:** Breaking and Boning (70-85% lean) 114.00-136.00, high dressing 127.00-143.00. Lean (85-90%) 97.00-118.00.

**BRED COWS:** Medium and Large 1-2 2-4 yrs 1030 lbs 2nd stage 2450.00; 5-8 yrs 1146 lbs 1st/2nd stage 1950.00 per head

**COW & CALF PAIRS:** Scarce

**NORTHEAST MISSOURI WEEKLY SUMMARY**

(Bowling Green, Kingdom City, Palmyra)

Receipts: 4,700 Week ago: 4,381 Year ago: 5,489  
Compared to last week, steers steady to 5.00 higher, spots 10.00 to 15.00 higher, heifers under 600 lbs 5.00 to 10.00 higher, over 600 lbs higher undertone. Slaughter cows steady to 5.00 lower.

**FEEDER STEERS:**  
Medium and Large 1

Table with 2 columns: Weight (400-500 lbs to 900-1000 lbs) and Price Range (327.00-380.00 to 223.50-229.25)

**FEEDER HEIFERS:**  
Medium and Large 1

Table with 2 columns: Weight (300-400 lbs to 700-800 lbs) and Price Range (318.00-361.00 to 209.25)

**SLAUGHTER BULLS:** Yield Grade 1-2 1360-2160 lbs 141.00-170.00; high dressing 158.00-162.00; low dressing 133.00-140.00.

**SLAUGHTER COWS:** Breaking and Boning (70-85% lean) 115.00-131.00; high dressing 124.00-136.50; low dressing 105.00-116.00. Lean (85-90%) 104.00-114.00.

**SLAUGHTER STEERS:** Choice 2-3 181.50-186.50. Select 1-2 173.00-175.00

**SLAUGHTER HEIFERS:** Choice 2-3 181.50-185.50. Select 1-2 173.00

**BRED COWS:** Scarce

**COW/CALF PAIRS:** Scarce

**NORTH CENTRAL MISSOURI WEEKLY SUMMARY**

(Macon, Unionville, Green City, New Cambria)

Receipts: 785 Week ago: 5,527 Year ago: 2,241  
No recent sales for feeder cattle. Slaughter cows 3.00 to 5.00 lower.  
\*Some sale barns on a bi-weekly schedule and may not have a sale each week.

**FEEDER STEERS:**  
Medium and Large 1

Table with 2 columns: Weight (400-500 lbs to 700-800 lbs) and Price Range (No recent sales)

**FEEDER HEIFERS:**  
Medium and Large 1

Table with 2 columns: Weight (400-500 lbs to 700-800 lbs) and Price Range (No recent sales)

**SLAUGHTER BULLS:** Yield Grade 1-2 1420-2394 lbs 146.00-161.00; high dressing 172.00-182.00

**SLAUGHTER COWS:** Breaking and Boning (70-85% lean) 117.00-123.00; high dressing 123.50-139.00; low dressing 113.00-116.00. Lean (85-90%) 109.00-115.00.

**BRED COWS:** Medium and Large 1 2-8 yrs 1290-1375 lbs 1st/2nd stage 2600.00-2750.00. Medium and Large 1-2 2-4 yrs 1356 lbs 2nd stage 2450.00; 2-8 yrs 1171-1600 lbs 2nd/3rd stage 1800.00-2475.00, 1st stage 1775.00 per head

**COW/CALF PAIRS:** Medium and Large 1-2 2-8 yrs 1000-1500 lbs with 150-300 lb calves 2300.00-2800.00; >5 yrs 1250 lbs with 150-300 lb calves 1750.00; >8 yrs 1000-1050 lbs with 150-300 lb calves 1825.00-2050.00 per pair

**SOUTHEAST MISSOURI WEEKLY SUMMARY**

(Jackson and Farmington)

Receipts: 1,078 Week ago: 1,710 Year ago: 1,420  
 Compared to last week, steers and heifers uneven from 3.00 lower to 7.00 higher. Slaughter cows 4.00 lower. Slaughter bulls steady.

**FEEDER STEERS:**  
 Medium and Large 1

300-400 lbs.	332.00-387.00
400-500 lbs.	300.00-385.00
500-600 lbs.	270.00-327.00
600-700 lbs.	247.00-290.00
700-800 lbs.	220.00-235.00
850-900 lbs.	216.00-224.00

**FEEDER HEIFERS:**  
 Medium and Large 1

300-400 lbs.	300.00-325.00
400-500 lbs.	274.00-317.00
500-600 lbs.	235.00-275.00
600-700 lbs.	210.00-260.00
700-750 lbs.	206.00-227.00

**SLAUGHTER BULLS:** Yield Grade 1-2 1145-2145 lbs 120.00-135.00, high dressing 135.00-152.00

**SLAUGHTER COWS:** Breaking and Boning (75-85% lean) 105.00-120.00; high dressing 119.00-144.00; Lean (85-90% lean) 80.00-106.00

**BRED COWS:** Medium and Large 2 stage 1350.00-2100.00; >8 yrs 1075-1525 lbs 3rd stage 1300.00-1750.00 per head

**COW & CALF PAIRS:** Medium and Large 2 2-8 yrs 1100-1500 lbs with <150 lb calves 2325.00-2500.00 per pair

**EAST CENTRAL MISSOURI WEEKLY SUMMARY**

(Cuba, Vienna)

Receipts: 2,378 Week ago: 1,720 Year ago: 2,037  
 Compared to last week, steers under 650 lbs 3.00 to 12.00 higher, over 650 lbs steady. Heifers 2.00 to 15.00 higher. Slaughter cows 2.00 to 7.00 lower.

**FEEDER STEERS:**  
 Medium and Large 1

300-400 lbs.	338.00-393.00
400-500 lbs.	321.00-376.00
500-600 lbs.	294.50-341.00
600-700 lbs.	265.00-295.00
Pkg 758 lbs.	240.00

**FEEDER HEIFERS:**  
 Medium and Large 1

300-400 lbs.	320.00-346.00
400-500 lbs.	284.00-348.00
500-600 lbs.	265.00-304.00
600-650 lbs.	245.00-253.00
700-800 lbs.	207.00-240.00

**SLAUGHTER BULLS:** Yield Grade 1-2 1260-1945 lbs 138.00-161.50; high dressing few 169.00-177.00; low dressing 125.00-133.00

**SLAUGHTER COWS:** Breaking and Boning, (70-85% lean) 115.50-128.50; high dressing 125.00-135.00; low dressing 106.00-115.50. Lean (85-90%) 105.00-119.00

**BRED COWS:** Medium and Large 1-2 2-8 yrs 1095-1375 1st to 3rd stage 1725.00-2100.00 per head

**COW & CALF PAIRS:** Medium and Large 1-2 >5 yrs 1100-1200 lbs with 150-300 lb calves 2250.00-2400.00 per pair

**NORTHWEST MISSOURI WEEKLY SUMMARY**

(Tina)

Receipts: Week Ago: 1,877 Year Ago: 1,887  
 Compared to last week, steers steady to firm, spots 5.00 to 10.00 higher on 400-650 lbs. Heifers 5.00 to 10.00 higher in most classes. Slaughter cows and bulls 2.00 to 5.00 lower.

**FEEDER STEERS:**  
 Medium and Large 1

300-400 lbs.	335.00-340.00
400-500 lbs.	320.00-337.00
500-600 lbs.	299.00-334.00
600-650 lbs.	291.00-308.50
700-750 lbs.	260.00-261.25

**FEEDER HEIFERS:**  
 Medium and Large 1

300-400 lbs.	320.00-340.00
400-500 lbs.	282.00-330.00
500-600 lbs.	277.50-299.00
11 hd 616 lbs.	261.50

**SLAUGHTER BULLS:** Yield Grade 1-2 1255-1840 lbs 144.00-154.50

**SLAUGHTER COWS:** Breaking and Boning, (70-85% lean) 112.50-128.00, high dressing 128.00-135.00. Lean (85-90%) 105.00-119.00

**BRED COWS:**

**COW/CALF PAIRS:**

**AFTERNOON NATIONAL SLAUGHTER CATTLE REVIEW**

Thus far for Friday in the Texas Panhandle negotiated cash trade has been at a standstill. In Kansas negotiated cash trade has been slow on light demand. The most recent market in the Southern Plains was Wednesday with live FOB purchases at 182.00. In Nebraska and the Western Cornbelt negotiated cash trade has been slow on light demand. The most recent market was Thursday with live FOB from 184.00-185.00, with a few purchases up to 187.00, with dressed delivered purchases traded from 294.00-295.00 The most recent market in the Western Cornbelt was Thursday with live FOB purchases traded from 184.00-186.00, with a few purchases up to 187.00, with dressed delivered purchases at 294.00, on a light test.

Negotiated Cash Sales:					
Confirmed:	5,527	Week Ago:	43,338	Year Ago:	2,749
Week to date:	89,294	Week Ago:	48,547	Year Ago:	73,699

Live Basis	Steers	Heifers
Over 80% Choice	184.00-187.00, avg 185.99	186.00-187.00, avg 186.13
65-80% Choice	185.00	-
35-65% Choice	-	-
0-35% Choice	-	-
Total All Grades	184.00-187.00, avg 185.91	186.00-187.00, avg 186.13
Dressed Basis		
Over 80% Choice	294.00-295.00, avg 294.14	294.00
65-80% Choice	294.00	-
35-65% Choice	-	-
0-35% Choice	-	-
Total All Grades	294.00-295.00, avg 294.10	294.00

All Beef Type Steers/Heifers	Head	Avg Wt	Price Range	Wtd Avg
Live FOB	2,620	1410.4	184.00-187.00	185.55
Live Del	670	1529.3	184.00-189.00	188.27
Dressed Del	63.2	936.7	294.00-300.00	294.27
Dressed FOB	-	-	-	-

**WEEKLY COMMODITY FUTURES TRENDS**

Compared to last week, Live Cattle 2.90 to 3.90 higher, Lean Hogs 0.10 to 2.35 lower, Feeder Cattle 6.70 to 7.15 higher.

Daily Futures Closes

	Mon.	Tues.	Wed.	Thu.	Fri.
Cattle					
Apr	183.82	183.35	182.10	183.95	184.67
Jun	178.05	177.15	175.25	177.80	178.57
Aug	176.40	175.50	173.37	176.05	176.77
Oct	179.95	179.37	177.65	179.70	180.60
Dec	184.07	183.95	182.55	184.17	184.87
Lean Hogs					
May	96.70	98.57	97.35	95.27	94.27
Jun	105.50	107.95	107.45	105.00	102.47
Jul	107.67	109.95	109.85	107.80	105.95
Aug	104.97	107.10	107.15	105.40	103.95
Oct	86.62	88.05	87.90	86.72	85.82
Fdr Cat					
Apr	242.90	243.75	243.10	244.87	—
May	245.17	246.05	244.10	246.25	248.70
Aug	258.47	259.40	256.30	258.30	260.55
Sep	259.37	260.47	257.50	259.42	261.57
Oct	259.67	260.77	257.77	259.70	261.72
Milk					
Apr	15.58	15.57	15.57	15.53	15.52
May	18.38	18.13	17.78	18.18	18.03
Jun	18.54	18.22	17.91	18.20	18.09



**WEEKLY COMMODITY GRAIN FUTURES TRENDS**

Compared to last week, Soybeans 0.09 to 0.16 higher, Wheat 0.53 to 0.57 higher, Corn 0.07 to 0.08 higher, KC Wheat 0.65 to 0.72 higher, Soybean Meal May 3.70 lower, others 1.50 to 3.70 higher.

**Daily Grain Futures Closes**

	Mon.	Tues.	Wed.	Thu.	Fri.
<b>Soybeans</b>					
May	1161	1167 1/2	11166	1162 3/4	1159 1/2
Jul	1176 1/2	1182	1181 1/2	1179 3/4	1177 1/4
Aug	1178 1/2	1183 3/4	1184	1183	1180 3/4
Sep	1167 1/4	1170 3/4	1171 3/4	1172 1/4	1171
Nov	1171 3/4	1174	1174 1/2	1175 1/2	174 3/4
<b>Wheat</b>					
May	570 1/4	585	594 1/2	602 1/4	603 1/4
Jul	587 1/2	602 3/4	613	620 1/2	622 1/4
Sep	605	619 3/4	631 1/4	639 1/4	641 3/4
Dec	629 1/4	642 1/2	654	662 1/4	665 3/4
Mar	648 3/4	660 1/4	672 1/4	680 1/2	684 1/4
<b>Corn</b>					
May	439 3/4	443	437 3/4	441	440
Jul	449 3/4	452 1/2	448 1/2	452	450
Sep	458	461	458 1/4	461 3/4	459
Dec	472 1/2	474 3/4	472 3/4	476 1/4	473 1/2
Mar	485 1/4	487	486	489 1/2	486 3/4
<b>KC Wheat</b>					
May	597 1/2	608 3/4	624 1/4	632	646 1/4
Jul	602 1/2	614 1/4	630	640 1/2	654 1/4
Sep	614 1/4	626	642 1/4	652 1/2	666 1/4
Dec	632 1/2	644	660 3/4	670 3/4	684 1/2
Mar	648	659	675 1/2	685 1/4	698 3/4
<b>SB Meal</b>					
May	344.30	345.20	346.00	343.90	340.00
Jul	344.80	346.10	349.20	347.60	344.70
Aug	345.30	346.30	350.00	348.60	345.80
Sep	345.60	346.60	350.30	349.20	346.70
Oct	345.50	346.60	350.10	349.30	347.10

**MISSOURI GRAIN WEEKLY TRENDS**

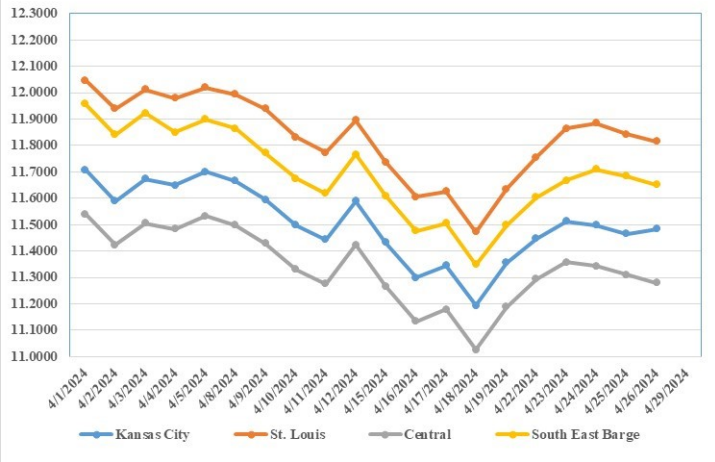
Compared to last week, Soybeans 0.04 to 0.19 higher, Wheat 0.38 to 0.53 higher, Corn 0.06 to 0.10 higher, Sorghum 0.06 to 0.07 higher.

Area	#1 Soybeans	#2 Soft Wheat	#2 Corn	#2 Grain Sorghum
<b>Kansas City</b>				
Friday**	11.21-11.41	5.35	4.19-4.59	4.54
Monday	11.26-11.51	5.55	4.25-4.65	4.60
Tuesday	11.33-11.58	5.70	4.28-4.68	4.63
Wednesday	11.31-11.56	5.79	4.22-4.62	4.57
Thursday	11.28-11.53	5.87	4.26-4.66	4.61
Friday	11.25-11.60	5.88	4.25-4.65	4.60
<b>St. Louis</b>				
Friday**	11.64	5.35-5.50	4.54-4.56	4.84
Monday	11.74-11.77	5.55-5.70	4.60-4.62	4.90
Tuesday	11.87	5.70-5.85	4.65	4.93
Wednesday	11.88-11.89	5.64-5.94	4.60	4.87
Thursday	11.84-11.85	5.72-6.02	4.63-4.64	4.91
Friday	11.81-11.83	5.73-6.03	4.64-4.65	4.90
<b>Central</b>				
Friday**	11.16-11.21	5.20-5.35	4.19-4.24	---
Monday	11.26-11.31	5.40-5.55	4.25-4.30	---
Tuesday	11.33-11.38	5.55-5.70	4.28-4.33	---
Wednesday	11.31-11.36	5.64-5.79	4.22-4.27	---
Thursday	11.28-11.33	5.72-5.87	4.26-4.31	---
Friday	11.25-11.30	5.73-5.88	4.25-4.30	---
<b>S.E. MO</b>				
Friday**	11.39-11.61	---	4.38-4.46	---
Monday	11.49-11.71	---	4.45-4.52	---
Tuesday	11.56-11.78	---	4.48-4.55	---
Wednesday	11.66-11.76	---	4.42-4.49	---
Thursday	11.65-11.73	---	4.49-4.53	---
Friday	11.62-11.70	---	4.48-4.54	---

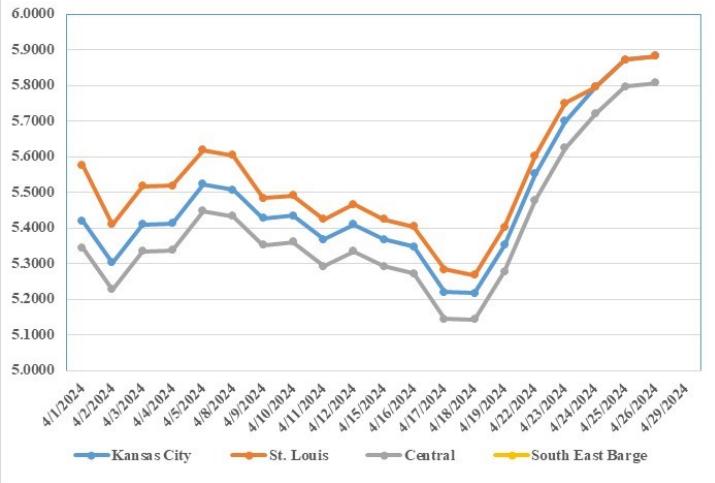
(PRICES PER BUSHEL) \*NEW CROP \*\*PREVIOUS WEEK'S PRICES  
\*Bids calculated using Kansas City, St. Louis, and St. Joseph bids

**MONTHLY GRAIN CROP**

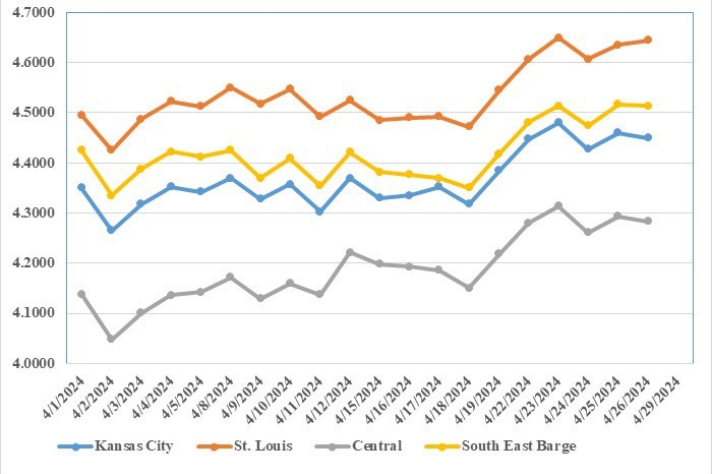
April 2024 Soybean Bids



April 2024 Wheat Bids



April 2024 Corn Bids



\*Axis value ranges may be updated to reflect data points.

**WHOLESALE FEEDSTUFFS PRICES (DOLLARS PER TON-BULK BASIS)**

Area	Soybean Hulls Pellets	Soybean Meal 46.5-48%	Corn Gluten Pellets 21%	Wheat Middlings
Kansas City	120.00	350.00	165.00	101.67
St. Louis	n/a	n/a	170.00	106.67

**MISSOURI CROP PROGRESS AND CONDITION**

There were 4.8 days suitable for fieldwork in the week ending April 21, 2024. Statewide, the average temperature was 60.7 degrees, 3.7 degrees above normal. Precipitation averaged 0.70 inches, 0.30 inches below normal. Topsoil moisture supply was rated 8 percent very short, 20 percent short, and 72 percent adequate. Subsoil moisture supply was rated 14 percent very short, 32 percent short, and 54 percent adequate. Corn planted reached 47 percent, compared to the 5-year average of 21 percent. Corn emerged reached 12 percent, compared to the 5-year average of 3 percent. Soybeans planted reached 16 percent, compared to the 5-year average of 3 percent. Soybeans emerged reached 3 percent. Cotton planted reached 3 percent, compared to the 5-year average of 1 percent. Rice planted reached 56 percent, compared to the 5-year average of 25 percent. Rice emerged reached 14 percent, compared to the 5-year average of 5 percent. Winter wheat headed reached 23 percent, compared to the 5-year average of 5 percent. Winter wheat condition was 1 percent very poor, 1 percent poor, 21 percent fair, 64 percent good, and 13 percent excellent.

	Week Ending			
	4/21/24	4/14/24	4/21/23	5 year avg
Corn Planted	47	26	50	21
Corn Emerged	12	1	9	3
Soybeans Planted	16	8	13	3
Soybeans Emerged	3	-	1	-
Rice Planted	56	35	54	25
Winter wheat headed	23	5	9	5

**COLD STORAGE**

**Total natural cheese stocks** in refrigerated warehouses on March 31, 2024 were up slightly from the previous month but down slightly from March 31, 2023.

**Butter stocks** were up 6 percent from last month and up 2 percent from a year ago.

**Total frozen poultry supplies** on March 31, 2024 were up slightly from the previous month but down 6 percent from a year ago. Total stocks of chicken were down 3 percent from the previous month and down 11 percent from last year. Total pounds of turkey in freezers were up 7 percent from last month and up 5 percent from March 31, 2023.

**Total frozen fruit stocks** were down 6 percent from last month but up 6 percent from a year ago.

**Total frozen vegetable stocks** were down 6 percent from last month and down 2 percent from a year ago.

**Total red meat supplies** in freezers were down 1 percent from the previous month and down 12 percent from last year. Total pounds of beef in freezers were down 3 percent from the previous month and down 10 percent from last year. Frozen pork supplies were up 1 percent from the previous month but down 13 percent from last year. Stocks of pork bellies were up 18 percent from last month but down 2 percent from last year.

**MISSOURI WEEKLY HAY SUMMARY 04/25/24**

So far there has been little to no moisture over the last week, and drought conditions worsened slightly with just over 72 percent of the state showing on the latest drought monitor. Many have their fingers crossed and hoping some of the forecasted rains come over the next few days. Planting pace is running about even with last year but well ahead of the five year average for both beans and corn. There has been a significant amount of hay cut, baled, and wrapped this week as well as just a little first cutting of alfalfa which has been baled dry now. The supply of hay is light to moderate, demand moderate and prices are mostly steady. The Missouri Department of Agriculture has a hay directory at <https://apps.mda.mo.gov/haydirectory> or visit the University of Missouri Extension feed stuff finder at <https://feedstufffinder.org>

- Alfalfa - Supreme 250.00-350.00, small square 10.00-15.00 per bale
- Alfalfa - Premium 200.00-275.00
- Alfalfa - Good 150.00-200.00, small square 5.00-10.00 per bale
- Alfalfa - Fair 125.00-150.00
- Mixed grass - Good/Premium 150.00-225.00
- Mixed grass-Fair/Good 100.00-175.00, small square 5.00-11.00 per bale
- Mixed grass - Fair 50.00-75.00 per large round bale
- Wheat straw - 4.00-7.00 per small square bale

Please Note: The above volumes (tonnage, acres, and bales) listed are for confirmed trades only, it does not include estimated volume (tonnage) for bids or offers to the trade. List your hay for sale at: [Hay Listing Online Form](#). Explanation of Hay Quality Guidelines: [Hay Quality Designation Guidelines](#). Glossary of Terms: [Livestock, Poultry, & Grain Hay Terms](#)

**MISSOURI WEEKLY SHEEP/GOAT AUCTION SUMMARY**

Receipts: 3,322 Week Ago: 1,777 Last Year: 654

**SHEEP:** Feeder lambs Medium and Large 1-2 13 hd 36 lbs 180.00. Small and Medium 1-2 hair pkg 215.00 215.00, fancy 277.00; 30-50 lbs 222.00-275.00, thin 230.00-235.00.

Slaughter lambs Choice and Prime 1-3 hair 50-80 lbs 220.00-280.00; 80-100 lbs 182.00-230.00; pkg 110 lbs 165.00. Choice 1-3 hair 50-80 lbs 217.00-250.00; 14 hd 81 lbs 185.00. Good 1-2 hair pkg 68 lbs 170.00.

Slaughter ewes Good 2-3 125-130 lbs 87.00-106.00. Utility and Good 1-3 95-115 lbs 85.00-91.00. Good 2-3 hair 80-165 lbs 90.00-115.00. Good 2-3 hair 70-95 lbs 80.00-95.00/hd. Utility and Good 1-3 95-135 lbs 75.00-90.00. Utility and Good 1-3 hair 85-100 lbs 80.00-85.00/hd; 105-120 lbs 90.00-110.00/hd. Cull and Utility 1-2 hair 11 hd 82 lbs 70.00. Cull and Utility 1-2 hair 12 hd 105 lbs 70.00/hd. Slaughter bucks 1-2 hair pkg 91 lbs 172.00; 115-140 lbs 137.00-145.00; 150-165 lbs 105.00-125.00.

Replacement ewes Small and Medium 1-2 1-2 yrs 71 lbs exp 180.00; 2-4 yrs 81 lbs exp 140.00; 105-135 lbs exp 115.00-122.00. Small and Medium 1-2 hair <1 yrs 63 lbs open 185.00/hd; 1-2 yrs 72 lbs exp 130.00/hd; 2-4 yrs 120 lbs exp 135.00/hd.

Families Small and Medium 1-2 2-4 yrs 95-110 lbs exp with <20 lb lambs 210.00-285.00/fam; 4-6 yrs 70-120 lbs exp with <20 lb lambs 150.00-160.00/fam.

**GOATS:** Feeder kids Selection 1 20-50 lbs 282.00-370.00. Selection 2 20-30 lbs 235.00-300.00; 30-40 lbs 205.00-310.00; 40-50 lbs 220.00-255.00. Selection 3 pkg 24 lbs 125.00; 15 hd 32 lbs 105.00. Wether kids Selection 1 pkg 40 lbs 310.00. Slaughter kids Selection 1 50-65 lbs 307.50-350.00, fancy 347.00. Selection 2 50-80 lbs 200.00-305.00.

Slaughter nannies/does Selection 1-2 pkg 60 lbs pygmies 120.00; 70-80 lbs 115.00-145.00; 80-90 lbs 80.00-127.00; 90-140 lbs 100.00-137.00. Selection 1-2 pkg 72 lbs 65.00/hd; pkg 80 lbs 105.00/hd.

Slaughter bucks/billies Selection 1-2 pkg 72 lbs pygmies 140.00; 115-145 lbs 152.00-185.00. Wethers Selection 1-2 pkg 75 lbs 250.00; pkg 93 lbs 297.50. Wether kids Selection 3 pkg 54 lbs 170.00.

Replacement nannies/does Selection 1-2 2-4 yrs 70-75 lbs exp 165.00-230.00; 85-175 lbs exp 135.00-155.00. Selection 1-2 1-2 yrs 90 lbs bred 335.00/hd; 2-4 yrs 75-135 lbs exp 230.00-240.00/hd.

Families Selection 1-2 2-4 yrs 65-75 lbs exp with <20 lb kids 132.00-165.00/fam

Explanatory Notes: Stage - Represents estimated lambing/kidding period (Open, Exp=exposed, Bred, Fall = Sep-Nov, Win = Dec-Feb, Spr = Mar-May, Sum=Jun-Aug; w/s = woolled and shorn; /hd= per head; /fam=per family  
All price CWT unless otherwise noted.

**MISSOURI DROUGHT MONITOR**

Date	None	D0	D1	D2	D3	D4
04/23/24	27.70	32.82	36.08	3.40	0	0
04/16/24	30.37	36.01	32.03	1.59	0	0
04/25/23	73.08	15.99	10.34	0.59	0	0

Reflects percentage of Missouri impacted by drought. D0 Abnormally Dry; D1 Moderate Drought; D2 Severe Drought; D3 Extreme Drought; D4 Exceptional Drought

**NATIONAL DIRECT DELIVERED FEEDER PIG REPORT**

04/19/24 Receipts: 110,731 Week ago: 123,943 Year Ago: 108,340  
Early weaned pigs steady and feeder pigs 16.00 lower.  
Cash 51,250 head 28.00-47.00, weighted average 41.54. Formula 51,106 head 40.34-60.61, weighted average 48.43  
Feeder pigs 40 pounds basis: Cash 8,375 head 75.00-97.00, weighted average 79.30

**NATIONAL DAILY DIRECT PRIOR DAY HOG REPORTS FOR 04/26/24**

**BARROWS AND GILTS (Carcass Basis):** 1,790 head  
Base Carcass Price 85.00-93.00, weighted average 89.47

**SOWS (Live Basis):** 6,469 head  
300-500 lbs. 25.00-65.97  
Over 500 lbs. 51.50-65.10

**MISSOURI WEEKLY DIRECT SLAUGHTER CATTLE REPORT 04/26/24**

Weekly Receipts: 280 Week ago: 0 Year ago: 360  
Trading as of Friday morning, flat dressed sales steady with last week's bid.

**LIVE STEERS & HEIFERS:** No sales reported  
**DRESSED STEERS & HEIFERS:** 7 loads Wed flat 292.00

**GRADE AND WEIGHT (Grid):** No sales reported

Click here for the current [National Crop Progress](#)  
Click here for the current [Missouri Crop Progress](#)  
The current hay directory can be found at: [Hay Directory](#).