

Weekly Market Summary

Published by:
Missouri Department of Agriculture
Ag Business Development Division
Market News Program



Chris Chinn, Director
 Jill Wood, Division Director
 Tony Hancock, Editor
[agmarketnews.mo.gov](http://www.ams.usda.gov/marketnews.htm)
<http://www.ams.usda.gov/marketnews.htm>

Michael L. Parson, Governor

Volume XLIV, Number 20 ♦ P.O. Box 630, Jefferson City, MO 65102 ♦ (573) 751-4211 ♦ Mon, May 20, 2024

MISSOURI WEEKLY FEEDER CATTLE WEIGHTED AVERAGE REPORT

Feeder Cattle Receipts: 31,869 Week ago: 24,569 Year ago: 35,266
 Steers and Heifers Medium and Large 1—Weighted average weights and prices

STEERS: Medium and Large 1

326 lbs. 381.59	522 lbs. 334.01	721 lbs. 267.30	914 lbs. 234.35
380 lbs. 373.27	570 lbs. 322.88	768 lbs. 253.51	977 lbs. 220.35
419 lbs. 370.21	621 lbs. 297.30	825 lbs. 244.17	
473 lbs. 354.71	672 lbs. 289.03	875 lbs. 242.08	

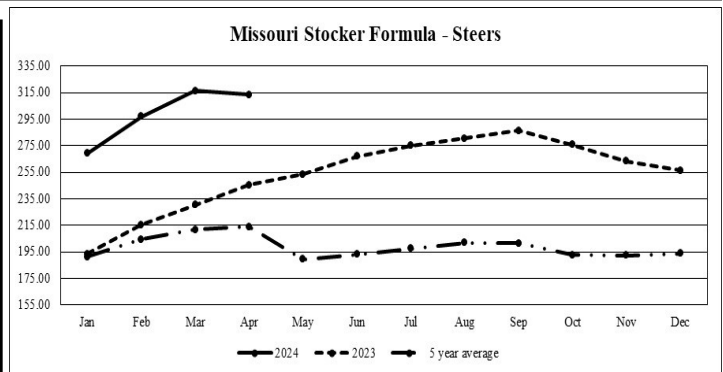
HEIFERS: Medium and Large 1

331 lbs. 350.29	520 lbs. 291.05	721 lbs. 250.16	916 lbs. 208.54
376 lbs. 337.30	570 lbs. 279.18	762 lbs. 230.99	
425 lbs. 322.30	617 lbs. 261.89	815 lbs. 221.09	
471 lbs. 309.59	678 lbs. 260.01	869 lbs. 212.81	

MISSOURI STEER (HEIFER) STOCKER FORMULA 05/20/2024

Monday's Missouri Stocker formula consists of **7990 (7,331)** head with a weighted average weight of **541.40 (525.71)** lbs. and a price value of **319.13 (283.56)**, 2.32 higher (3.75 higher) than last week.

This a rolling seven day calculated weighted value which combines all Feeder Steers reported by MDA/USDA Market News Service weighing from 400-649 lbs. in the Medium and Large 1 and Medium and Large 1-2 frame and muscle classifications, including all comment cattle except Brahman X. Heifer values are in parentheses.



*Graph is updated the first Monday of each month. Axis value ranges may be updated to reflect data points.

MISSOURI WEEKLY CATTLE AUCTION SUMMARY

Total Receipts: 38,550 Week Ago: 29,107 Year Ago: 43,304

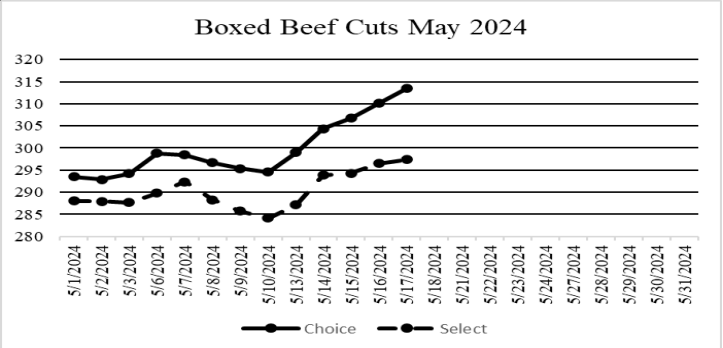
Compared to last week, feeders sold steady to 5.00 higher, with some spots of up to 10.00 higher. A few local barns did see some lower quotes that seems to be mostly related to the quality of the offering compared to the previous week. The supply of feeders was moderate with several load lots of heavier weights back in the offering this week. The percent of steers to heifers was back at 53:47 squashing thoughts at least for the time being that some expansion had perhaps started to occur. A few farmers got back into the field's late week and over the weekend to resume planting or start haying. A few notable sales this week included a 29 head of 419 lb. steers at South Central Regional Stockyards which sold for 398.50 as well as a pard load of 601 lb. steers at 322.50. Tina Livestock Market sold 13 head of 503 lbs. steers at 366.00. F & T Livestock Market sold a part load of 706 lb. steers at 291.50. Joplin Regional Stockyards sold a half load of 824 lb. steers for 250.00. Unionville Livestock Market sold a load of Reputation 902 lb. steers for 247.00. Lolli Brothers Livestock Market sold two full loads of light 7 weight heifers for 262.50 and 262.60. Boxed beef cutouts saw large advances this week, choice closed on Friday at 313.45, up 18.88 and select closed at 297.40, up 13.23 compared to last week. Negotiated feedlot sales as of the Friday afternoon report totaled about 47K head with more sales taking place after the reporting deadline as trade was late to develop and was still occurring at the report cutoff deadline. Live sales were reported mostly from 186.00-190.00 and dressed sales from 298.00-300.00, with some up to 302.00. Missouri Stocker formula consists of 7,990 head with a weighted average weight of 541.40 lbs. and a price value of 319.13, 2.32 higher than a week ago. The steer/heifer spread is 35.57.

The Market News Team sends love and prayers to The Davis Family following the passing of former Market Reporter Mike Davis, over the weekend. Mike began working for Market News as a feeder pig grader in 1975 and worked his way up to Market News Manager for the State of Missouri over his 36 years with the Dept. of Agriculture. Aside from being a great co-worker and boss Mike was just a good ole buddy to so many. He always had time for a wild west tale or two and the right words of wisdom and guidance when needed, he will be greatly missed.

The Weekly Market Summary, as well as historical summaries, are available on our website <https://agmarketnews.mo.gov/summaries>
 Market News Hotline: 1-573-522-9244

NATIONAL BOXED BEEF CUTOUT/BOXED BEEF CUTS

<u>DATE</u>	<u>CHOICE</u>	<u>SELECT</u>	<u>TOTAL LOADS</u>
6/13	298.95	287.18	113
6/14	304.39	293.82	121
6/15	306.77	294.31	109
6/16	310.15	296.51	115
6/17	313.45	297.40	99
5 Day Simple Average	306.74	293.84	



*Axis value ranges may be updated to reflect data points.

WEEKLY LIVESTOCK SLAUGHTER 05/18/24

	<u>CATTLE</u>	<u>HOGS</u>	<u>SHEEP</u>
Week to Date:	598,000	2,404,000	35,000
Last Week:	622,000	2,379,000	34,000
Last Year:	640,266	2,407,025	33,667

SOUTHWEST MISSOURI WEEKLY SUMMARY

(Joplin and Springfield)

Receipts: 10,308 Week ago: 8,109 Year Ago: 9,642
Compared to last week, feeders sold from 5.00 lower to 12.00 higher with most sales being on the positive side. Slaughter cows and bulls sold steady to 6.00 higher.

FEEDER STEERS:

Medium and Large 1

300-400 lbs.	340.00-417.50
400-500 lbs.	320.00-390.00
500-600 lbs.	297.50-347.00
600-700 lbs.	270.00-300.00
700-800 lbs.	245.00-275.00
800-900 lbs.	231.00-250.00
900-950 lbs.	223.00-228.00

FEEDER HEIFERS:

Medium and Large 1

300-400 lbs.	319.00-355.00
400-500 lbs.	285.00-330.00
500-600 lbs.	262.00-302.00
600-700 lbs.	237.00-258.00
700-800 lbs.	222.00-233.50
800-850 lbs.	211.50-221.75
900-950 lbs.	203.00-213.00

FEEDER HOLSTEIN STEERS

Large 3

400-500 lbs.	217.00-238.00
500-600 lbs.	207.00-236.00
700-800 lbs.	165.00-184.00
800-900 lbs.	170.00-179.00
900-925 lbs.	165.00-170.00

SLAUGHTER COWS: Breaking and Boning (70-85% lean) 120.00-137.00; high dressing 132.50-152.50; low dressing 95.00-121.00. Lean (85-90%) 112.00-128.00.

SLAUGHTER BULLS: Yield Grade 1-2 1150-2420 lbs. 151.00-174.00; high dressing 170.00-191.00; low dressing 135.00-150.00

BRED COWS: Medium and Large 1 2-8 yrs 1125-1420 lbs 2nd and 3rd stage 1850.00-3200.00. Medium and Large 1-2 2-8 yrs 925-1400 lbs 2nd and 3rd stage 1425.00-2500.00 per head

COW & CALF PAIRS: Medium and Large 1 2-8 yrs 1040-1150 lbs 150-300 lb calves some bred back 2925.00-3350.00 per pair. Medium and Large 1-2 2-8 yrs 1025-1400 lbs baby to 300 lb calves 2200.00-3050.00 per pair.

BRED HEIFERS: Medium and Large 1 and 1-2 Few <2 yrs 950-1000 3rd stage 2900.00 per head

SOUTH CENTRAL MISSOURI WEEKLY SUMMARY

(West Plains, Phillipsburg)

Receipts: 4,118 Week ago: 3,112 Year Ago: 5,637
Compared to last week, early week sales 3.00-6.00 lower later week sales 3.00 to 5.00 higher. Slaughter cows sold steady to 5.00 higher.

FEEDER STEERS:

Medium and Large 1

300-400 lbs.	372.50-282.50
400-500 lbs.	335.00-375.00
500-600 lbs.	301.00-336.00
600-700 lbs.	258.00-296.00
700-800 lbs.	244.00-264.00

FEEDER HEIFERS:

Medium and Large 1

300-400 lbs.	310.00-380.00
400-500 lbs.	295.00-330.00
500-600 lbs.	262.50-300.00
600-700 lbs.	233.00-256.00
32 hd 735 lbs.	229.50

FEEDER HOLSTEIN STEERS:

Large 3

Scarce

SLAUGHTER COWS: Breaking and Boning (70-85% lean) 116.00-134.00, high dressing 129.50-146.00; low dressing 105.00-122.00. Lean (85-90%) 107.00-127.00

SLAUGHTER BULLS: Yield Grade 1-2 1240-2205 lbs. 150.00-168.00; high dressing 163.00-181.00; low dressing 128.00-149.00

BRED COWS: Medium and Large 1-2 2-8 yrs 1075-1300 2nd and 3rd stage 1500.00-2325.00 per head.

COW & CALF PAIRS: Medium 1 2-8 yrs 1075-1205 lbs with 150-300 lb calves 2400.00-2550.00 per pair

WEST CENTRAL MISSOURI WEEKLY SUMMARY

(Kingsville, Windsor, Butler)

Receipts: 5,860 Week ago: 5,531 Year ago: 8,291
Compared to last week, steers and heifers sold uneven from steady to 5.00 higher spots 10.00 higher on calves early to 5.00-10.00 lower later in the week. Slaughter cows and bulls sold steady to 2.00 higher.

FEEDER STEERS:

Medium and Large 1

400-500 lbs.	315.00-415.00
500-600 lbs.	302.00-357.50
600-700 lbs.	266.50-315.00
700-800 lbs.	255.00-269.50
800-900 lbs.	236.25-246.60

FEEDER HEIFERS:

Medium and Large 1

400-500 lbs.	280.00-340.00
500-600 lbs.	260.00-314.50
600-700 lbs.	249.00-279.00
700-800 lbs.	231.00-257.00
800-900 lbs.	214.75-236.00

SLAUGHTER BULLS: Yield Grade 1-2 1125-2325 lbs 141.00-160.00; high dressing 164.00-187.00

SLAUGHTER COWS: Breaking and Boning (70-85% lean) 120.00-139.00, high dressing 135.00-145.00. Lean (85-90%) 109.50-121.00

BRED COWS: Scarce

COW & CALF PAIRS: Scarce

NORTHEAST MISSOURI WEEKLY SUMMARY

(Bowling Green, Kingdom City, Palmyra)

Receipts: 4,591 Week ago: 5,237 Year ago: 6,176
Compared to last week, feeders sold steady to sharply higher. Slaughter cows sold steady to firm.

FEEDER STEERS:

Medium and Large 1

400-500 lbs.	333.00-377.50
500-600 lbs.	300.00-344.00
600-700 lbs.	273.00-310.50
700-800 lbs.	255.00-278.00
900-1000 lbs.	220.35-235.00

FEEDER HEIFERS:

Medium and Large 1

400-500 lbs.	303.00-342.50
500-600 lbs.	274.00-312.75
600-700 lbs.	247.00-290.75

SLAUGHTER BULLS: Yield Grade 1-2 1350-2410 lbs 149.00-168.50; high dressing 153.00-185.50; low dressing 140.00-147.00

SLAUGHTER COWS: Breaking and Boning (70-85% lean) 120.00-135.00; high dressing 129.00-145.00; low dressing 108.00-124.00. Lean (85-90%) 106.00-118.00.

SLAUGHTER STEERS: Choice 2-3 183.00-186.50. Select and Choice 1-3 178.00-180.50

SLAUGHTER HEIFERS: Choice 2-3 185.50-186.50. Select and Choice 1-3 178.00-182.50

BRED COWS: Medium and Large 1 2-8 yrs 1075-1306 lbs 1st and 2nd stage 2300.00-2625.00 per head

COW/CALF PAIRS: Medium and Large 1 2-8 yrs 1100-1400 lbs with 150-300 lbs calves 3025.00-3375.00, pkg with calves over 300 lbs and bred back 4325.00 per pair.

NORTH CENTRAL MISSOURI WEEKLY SUMMARY

(Macon, Unionville, Green City, New Cambria)

Receipts: 6,424 Week ago: 0 Year ago: 4,582
Compared to two weeks ago feeders sold firm to sharply higher. Slaughter cows sold 4.00 to 8.00 higher.

FEEDER STEERS:

Medium and Large 1

400-500 lbs.	339.00-420.00
500-600 lbs.	306.00-370.00
600-700 lbs.	275.25-323.00
700-800 lbs.	251.00-287.25
850-900 lbs.	244.25-247.00
900-950 lbs.	244.10-247.00

FEEDER HEIFERS:

Medium and Large 1

300-400 lbs.	340.00-410.00
400-500 lbs.	294.00-390.00
500-600 lbs.	273.50-314.50
600-700 lbs.	260.00-280.50
700-750 lbs.	250.00-262.60

SLAUGHTER BULLS: Yield Grade 1-2 1700-2250 lbs. 157.50-176.00; high dressing 171.00-188.50.

SLAUGHTER COWS: Breaking and Boning (70-85% lean) 118.00-140.00, high dressing 131.00-147.00; low dressing 115.50-121.00. Lean (85-90%) 111.00-130.00

BRED COWS: Scarce

COW/CALF PAIRS: Scarce

SOUTHEAST MISSOURI WEEKLY SUMMARY

(Jackson and Farmington)

Receipts: 1,727 Week ago: 1,341 Year ago: 2,133
 Compared to last week, feeders sold steady to 4.00 higher, with 600-700 lbs. up to 7.00 higher. Slaughter cows and bulls sold steady to 2.00 higher.

FEEDER STEERS:
 Medium and Large 1

300-400 lbs. 347.00-385.00
 400-500 lbs. 300.00-355.00
 500-600 lbs. 290.00-325.00
 600-700 lbs. 268.00-306.00
 700-800 lbs. 222.00-237.00

FEEDER HEIFERS:
 Medium and Large 1

300-400 lbs. 302.50-337.00
 400-500 lbs. 260.00-330.00
 500-600 lbs. 245.00-287.00
 600-700 lbs. 219.00-262.00
 700-800 lbs. 215.00-227.00

SLAUGHTER BULLS: Yield Grade 1-2 1400-2100 lbs 120.00-140.00, high dressing 140.00-174.00

SLAUGHTER COWS: Breaking and Boning (75-85% lean) 106.00-119.00; high dressing 120.00-144.00. Lean (85-90% lean) 80.00-100.00

BRED COWS: Medium and Large 2 2-8 yrs 1000-1450 lbs 2nd and 3rd stage 12000.00-2125.00 per head

COW & CALF PAIRS: Medium and Large 2 2-8 yrs 1000-1400 lbs few bred back in 1st baby to 300 lb calves 2000.00-2700.00 per pair

EAST CENTRAL MISSOURI WEEKLY SUMMARY

(Cuba, Vienna)

Receipts: 3,105 Week ago: 3,121 Year ago: 4,227
 Feeder steers steady to 10.00 higher with greatest advance from 550-675 lbs. Feeder heifers steady to 5.00 higher. Slaughter cows steady to 7.00 higher.

FEEDER STEERS:
 Medium and Large 1

300-400 lbs. 361.00-398.00
 400-500 lbs. 330.00-398.50
 500-600 lbs. 300.00-367.00
 600-700 lbs. 275.00-320.00
 700-800 lbs. 240.00-279.00

FEEDER HEIFERS:
 Medium and Large 1

300-400 lbs. 310.00-352.00
 400-500 lbs. 285.00-336.00
 500-600 lbs. 261.00-310.00
 600-700 lbs. 245.00-257.00
 700-800 lbs. 233.50-253.00

SLAUGHTER BULLS: Yield Grade 1-2 1325-2125 lbs 143.50-168.50; high dressing 155.00-180.00; low dressing 127.00-135.00

SLAUGHTER COWS: Breaking and Boning, (70-85% lean) 121.00-137.50; high dressing 127.00-148.00. Lean (85-90%) 110.00-126.00

BRED COWS: Medium and Large 1-2 few 2-8 yrs 1050-1325 lbs 2nd and 3rd stage 17250.00-2275.00 per head

COW & CALF PAIRS: Medium and Large 1-2 2-8 yrs 1050-1325 lbs with calves >300 lbs bred back in 1st stage 1675.00-3075.00 per pair.

NORTHWEST MISSOURI WEEKLY SUMMARY

(Tina)

Receipts: 1,869 Week Ago: 1,650 Year Ago: 2,375
 Compared to last week, steers sold 5.00 to 10.00 higher and heifers unevenly steady. Slaughter cows 1.00 to 4.00 higher.

FEEDER STEERS:
 Medium and Large 1

400-500 lbs. 349.00-387.50
 500-600 lbs. 333.00-366.00
 600-700 lbs. 289.50-315.00
 Pkg 732 lbs. 264.00

FEEDER HEIFERS:
 Medium and Large 1

400-500 lbs. 310.00-336.00
 500-550 lbs. 292.00-306.00
 600-700 lbs. 253.50-264.00
 700-800 lbs. 242.25-249.75

SLAUGHTER BULLS: Yield Grade 1-2 1600-1950 lbs 154.00-178.50

SLAUGHTER COWS: Breaking and Boning, (70-85% lean) 119.00-148.00, high dressing 133.00-141.00. Lean (85-90%) 112.00-120.50

BRED COWS: Scarce

COW/CALF PAIRS: Scarce

AFTERNOON NATIONAL SLAUGHTER CATTLE REVIEW

For Thursday in the Southern Plains and Nebraska negotiated cash trading has been at a standstill. Last week in the Texas Panhandle live FOB purchases traded at 184.00. Last week in Kansas live FOB purchases traded from 183.00-185.00, with a few up to 187.00. Last week in Nebraska live FOB purchases traded from 186.00-187.00 and dressed delivered purchases from 295.00-296.00. In the Western Cornbelt negotiated cash trading was limited on light demand. A very few live FOB purchases traded from 186.00-190.00 and a very few dressed delivered purchases traded from 298.00-300.00. However, not enough purchases for a full market trend. Last week in the Western Cornbelt, live FOB purchases traded from 185.00-187.00, mostly at 187.00, with a few up to 188.00, and dressed delivered purchases at 295.00, with a few up to 296.00.

Negotiated Cash Sales:					
Confirmed:	41,292	Week Ago:	41,989	Year Ago:	19,014
Week to date:	46,976	Week Ago:	61,268	Year Ago:	63,049

Live Basis	Steers	Heifers
Over 80% Choice	186.00-190.00 avg 188.19	-
65-80% Choice	-	-
35-65% Choice	-	-
0-35% Choice	-	-
Total All Grades	186.00-190.00 avg 188.19	-
Dressed Basis		
Over 80% Choice	300.00-300.00 avg 300.00	298.00-298.00 avg 298.00
65-80% Choice	-	-
35-65% Choice	-	-
0-35% Choice	-	-
Total All Grades	300.00-300.00 avg 300.00	298.00-298.00 avg 298.00

All Beef Type Steers/Heifers	Head	Avg Wt	Price Range	Wtd Avg
Live FOB	28,182	1416.8	184.00-191.00	187.85
Live Del	310	1381.4	184.00-191.00	188.29
Dressed Del	11,376	921.5	290.00-302.00	298.85
Dressed FOB	12,80	908.9	296.00-301.00	299.66

WEEKLY COMMODITY FUTURES TRENDS

Compared to last week, Live Cattle 4.07 to 4.93 higher, Lean Hogs 0.73 to 1.87 lower, Feeder Cattle 7.92 to 8.95 higher.

Daily Futures Closes

	Mon.	Tues.	Wed.	Thu.	Fri.
Cattle					
Jun	175.57	178.17	178.25	179.02	181.05
Aug	173.40	176.12	176.52	177.37	179.05
Oct	176.82	179.35	179.70	180.62	181.95
Dec	181.32	183.57	183.82	184.55	185.90
Feb	185.00	187.07	187.25	187.95	189.12
Lean Hogs					
May	91.45	91.82	—	—	—
Jun	97.47	98.32	97.50	98.37	96.50
Jul	100.05	100.92	100.87	101.62	100.05
Aug	99.27	99.90	100.02	100.80	99.47
Oct	83.87	84.30	84.57	84.67	83.97
Fdr Cat					
May	239.37	243.27	243.15	244.85	246.72
Aug	251.35	255.67	255.87	257.35	259.85
Sep	252.22	256.62	256.95	258.40	260.85
Oct	252.92	257.25	257.67	258.95	261.35
Nov	252.52	256.67	257.20	258.40	260.52
Milk					
May	18.71	18.72	18.70	18.73	18.72
Jun	21.26	20.86	20.85	21.12	21.46
Jul	20.21	19.91	20.18	20.50	20.64

WEEKLY COMMODITY GRAIN FUTURES TRENDS

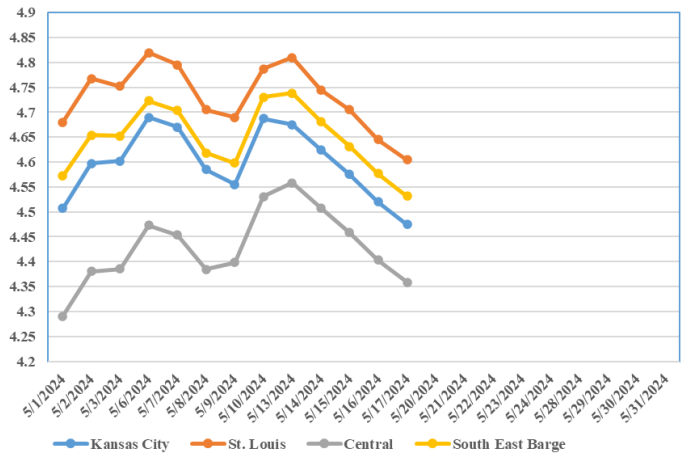
Compared to last week, Soybeans nearby 0.04 to 0.09 higher, distant 0.02 to 0.03 lower, Wheat 0.06 to 0.13 lower, Corn 0.14 to 0.17 lower, KC Wheat 0.08 to 0.11 lower, Soybean Meal 3.10 to 4.70 lower.

Daily Grain Futures Closes

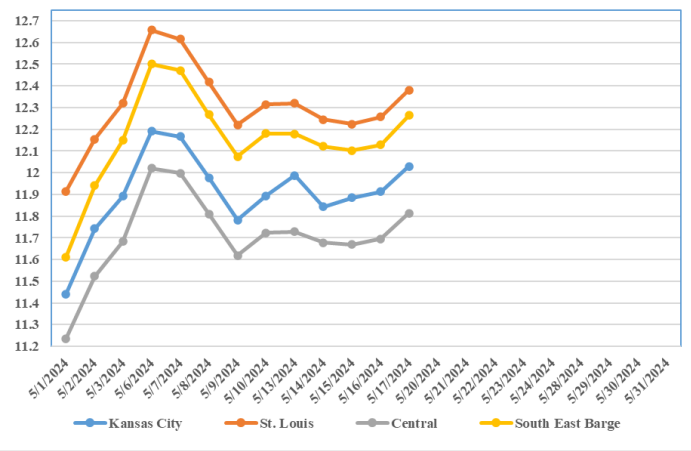
	Mon.	Tues.	Wed.	Thu.	Fri.
Soybeans					
May	1205 1/2	1199			
Jul	1219 1/2	1212 1/2	1213 1/4	1216 1/4	1228
Aug	1223 1/2	1218 1/4	1216 1/4	1216 3/4	1225 1/4
Sep	1212 1/2	1205 1/2	1202 3/4	1200 3/4	1205 1/4
Nov	1212 1/4	1205	1201	1199	1203 1/4
Wheat					
May	670 1/4	657			
Jul	687	672 1/2	665 3/4	663 1/2	651 1/4
Sep	706 1/2	693 1/4	686	683 1/2	672
Dec	728 1/2	717 1/4	709 1/2	707	696 1/2
Mar	743 3/4	735	727 1/4	724 3/4	716 1/4
Corn					
May	458 1/2	453 3/4			
Jul	472 1/2	467 1/2	462 1/2	457	452 1/2
Sep	481 3/4	478	473 1/4	467 3/4	462 1/2
Dec	493	491	487	481 3/4	476 1/2
Mar	504 1/2	503	499 1/4	494 3/4	489 1/2
KC Wheat					
May	724	724			
Jul	400	683 1/4	675	673 1/4	661 3/4
Sep	413	697	688 3/4	687	675 1/2
Dec	732 1/4	717 3/4	709 1/2	707 3/4	696 3/4
Mar	747 3/4	733 3/4	725 1/2	723 3/4	713 3/4
SB Meal					
May	361.60	363.60			
Jul	366.50	373.30	371.70	367.70	368.80
Aug	365.70	371.80	369.70	365.30	366.20
Sep	365.80	371.20	369.10	364.40	364.70
Oct	365.80	370.80	368.50	364.00	363.80

MONTHLY GRAIN CROP

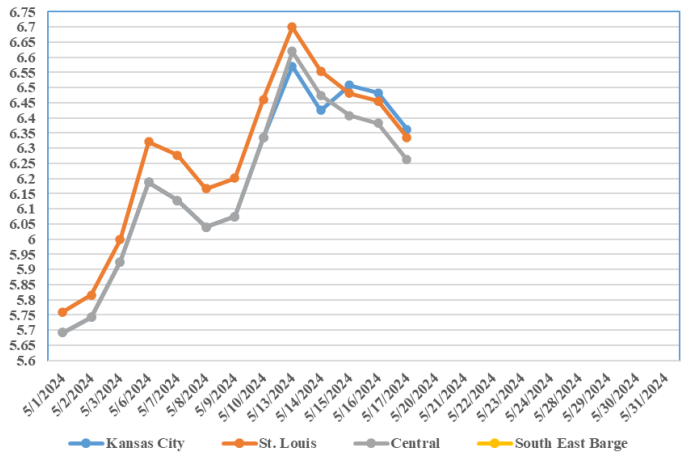
May 2023 Corn Bids



May 2023 Soybean Bids



May 2023 Wheat Bids



*Axis value ranges may be updated to reflect data points.

MISSOURI GRAIN WEEKLY TRENDS

Compared to last week, Soybeans 0.06 to 0.09 higher, Wheat 0.13 lower to 0.03 higher, Corn 0.14 to 0.25 lower, Sorghum 0.17 lower.

Area	#1 Soybeans	#2 Soft Wheat	#2 Corn	#2 Grain Sorghum
Kansas City				
Friday**	11.69-12.04	6.33	4.54-4.82	4.79
Monday	11.69-12.04	6.57	4.57-4.77	4.82
Tuesday	11.64-11.99	6.42	4.52-4.72	4.77
Wednesday	11.63-12.03	6.50	4.47-4.67	4.72
Thursday	11.66-12.06	6.48	4.42-4.62	4.67
Friday	11.78-12.18	6.36	4.37-4.57	4.62
St. Louis				
Friday**	12.31-12.32	6.41-6.53	4.78	5.14
Monday	12.30-12.33	6.66-6.77	4.80-4.81	5.17
Tuesday	12.23-12.25	6.51-6.62	4.73-4.75	5.12
Wednesday	12.21-12.23	6.42-6.55	4.70	5.07
Thursday	12.25-12.26	6.40-6.53	4.64-4.65	5.02
Friday	12.37-12.39	6.28-6.41	4.60	4.97
Central				
Friday**	11.69-11.74	6.33	4.49-4.54	---
Monday	11.69-11.74	6.57-6.67	4.52-4.57	---
Tuesday	11.64-11.69	6.42-6.52	4.47-4.77	---
Wednesday	11.63-11.68	6.35-6.45	4.42-4.47	---
Thursday	11.66-11.71	6.33-6.43	4.37-4.42	---
Friday	11.78-11.83	6.21-6.31	4.32-4.37	---
S.E. MO				
Friday**	12.15-12.24	---	4.69-4.74	---
Monday	12.13-12.24	---	4.69-4.77	---
Tuesday	12.06-12.19	---	4.64-4.72	---
Wednesday	12.05-12.15	---	4.59-4.67	---
Thursday	12.08-12.18	---	4.54-4.62	---
Friday	12.24-12.31	---	4.49-4.57	---

(PRICES PER BUSHEL) *NEW CROP **PREVIOUS WEEK'S PRICES
*Bids calculated using Kansas City, St. Louis, and St. Joseph bids

WHOLESALE FEEDSTUFFS PRICES (DOLLARS PER TON-BULK BASIS)

Area	Soybean Hulls Pellets	Soybean Meal 46.5-48%	Corn Gluten Pellets 21%	Wheat Middlings
Kansas City	115.00	381.30	175.00	96.67
St. Louis	n/a	n/a	181.50	96.67

MISSOURI CROP PROGRESS AND CONDITION

There were 2.4 days suitable for fieldwork in the week ending May 12, 2024. Statewide, the average temperature was 65.7 degrees, 3.2 degrees above normal. Precipitation averaged 1.49 inches, 0.45 inches above normal. Topsoil moisture supply was rated 1 percent very short, 3 percent short, 64 percent adequate, and 32 percent surplus. Subsoil moisture supply was rated 1 percent very short, 9 percent short, 76 percent adequate, and 14 percent surplus. Corn planted reached 72 percent, compared to the 5-year average of 69 percent. Corn emerged reached 54 percent, compared to the 5-year average of 43 percent. Corn condition was rated 1 percent very poor, 6 percent poor, 31 percent fair, 53 percent good, and 9 percent excellent. Soybeans planted reached 36 percent, compared to the 5-year average of 25 percent. Soybeans emerged reached 25 percent, compared to the 5-year average of 10 percent. Rice emerged reached 73 percent, compared to the 5-year average of 43 percent. Rice condition was rated 5 percent poor, 15 percent fair, 75 percent good, and 5 percent excellent. Winter wheat headed reached 90 percent, compared to the 5-year average of 59 percent. Winter wheat condition was rated 1 percent poor, 17 percent fair, 73 percent good, and 9 percent excellent.

	Week Ending			
	5/12/24	5/5/24	5/12/23	5 year avg
Corn Planted	72	67	95	69
Corn Emerged	54	48	72	43
Soybeans Planted	36	30	59	25
Soybeans Emerged	25	17	32	10
Rice Planted	87	77	90	64
Rice Emerged	73	41	72	43
Winter Wheat Headed	90	76	66	59
Alfalfa hay 1st cutting	10	2	-	-
Other hay cut	7	2	2	2

MISSOURI WEEKLY HAY SUMMARY 05/16/24

Moisture continues to hamper planting and haying. A few guys have managed to sneak in and get some work done but overall, just not enough days without a shower in the forecast for most to get to rolling. Those wrapping higher moisture hay have been able to get some done but very little dry hay has gone up at this point. Moisture continues to improve the drought monitor as of the current publication 82 percent of the state is now drought free. One county in SW is still mostly listed as abnormally dry but other than that the remaining in 18 percent is far south central and all of the southeast corner. The supply of hay is light to moderate; demand light and prices are steady to weak. The Missouri Department of Agriculture has a hay directory at <https://apps.mda.mo.gov/haydirectory/> or visit the University of Missouri Extension feed stuff finder at <https://feedstufffinder.org>

- Alfalfa - Supreme 250.00-350.00, small square 10.00-15.00 per bale
- Alfalfa - Premium 200.00-275.00
- Alfalfa - Good 150.00-200.00, small square 5.00-10.00 per bale
- Alfalfa - Fair 125.00-150.00
- Mixed grass - Good/Premium 150.00-225.00
- Mixed grass-Fair/Good 100.00-175.00, small square 5.00-11.00 per bale
- Mixed grass - Fair 45.00-75.00 per large round bale
- Wheat straw - 4.00-7.00 per small square bale

Please Note: The above volumes (tonnage, acres, and bales) listed are for confirmed trades only, it does not include estimated volume (tonnage) for bids or offers to the trade. List your hay for sale at: [Hay Listing Online Form](#). Explanation of Hay Quality Guidelines: [Hay Quality Designation Guidelines](#). Glossary of Terms: [Livestock, Poultry, & Grain Hay Terms](#)

MISSOURI WEEKLY SHEEP/GOAT AUCTION SUMMARY

Receipts: 1,705 Week Ago: 3,044 Last Year: 2,202

SHEEP: Feeder Lambs: Medium and Large 1-2 30-40 lbs 200.00-217.50. Small and Medium 1-2 hair 25-38 lbs 185.00-220.00; 40-50 lbs 200.00-227.50. Slaughter Lambs: Choice and Prime 1-2 woolled 45-80 lbs 200.00-212.00; hair 28-65 lbs 200.00-225.00; 70-85 lbs 150.00-220.00. Choice and Prime 1-2 hair 50-70 lbs 217.50-252.50; 70-90 lbs 210.00-232.50, fancy 240.00-267.50. Choice 1-3 hair 50-60 lbs 202.50-222.50; 70-85 lbs 150.00-175.00. Ewes Utility and Good 2 75-175 lbs 80.00-130.00. Utility and Good 2-3 84-225 lbs 52.00-87.00. Good 2-3 hair 90-95 lbs 130.00-135.00. Utility and Good 1-2 hair 73-180 lbs 102.00-122.50. Bucks hair and wool 140-285 lbs 90.00-117.00. Replacement Ewe: 2-4 yrs 85-140 lbs exposed 140.00-160.00.

GOATS: Feeder Kids Selection 1 40-50 lbs 302.00-375.00, replacement 385.00-550.00. Selection 1-2 30-35 lbs 205.00-230.00. Selection 2 22-40 lbs 202.50-262.50. Selection 3 27-47 lbs 160.00-192.50. Slaughter Kids: Selection 1 50-85 lbs 300.00-395.00, fancy 455.00-530.00. Selection 1-2 40-84 lbs 200.00-275.00. Selection 2 60-65 lbs 250.00-275.00. Selection 3 55-60 lbs 175.00-195.00. Nannies Selection 1-2 80-128 lbs 82.00-147.50. Replacement Nannies Selection 1-2 2-4 yrs 80-125 lbs exposed 137.00-212.00.

Explanatory Notes: Stage - Represents estimated lambing/kidding period (Open, Exp=exposed, Bred, Fall = Sep-Nov, Win = Dec-Feb, Spr = Mar-May, Sum=Jun-Aug; w/s = woolled and shorn; /hd= per head; /fam=per family
All price CWT unless otherwise noted.

MISSOURI DROUGHT MONITOR

Date	None	D0	D1	D2	D3	D4
05/14/24	82.02	9.82	8.12	0.04	0.0	0.0
05/07/24	69.49	18.40	120.6	0.05	0.0	0.0
05/16/23	39.64	28.03	20.43	11.17	0.72	0.0

Reflects percentage of Missouri impacted by drought. D0 Abnormally Dry; D1 Moderate Drought; D2 Severe Drought; D3 Extreme Drought; D4 Exceptional Drought

NATIONAL DIRECT DELIVERED FEEDER PIG REPORT

05/17/24 Receipts: 127,823 Week ago: 141,891 Year Ago: 122,200
Early weaned pigs and feeder pigs 8.00 lower.
Cash 84,100 head 30.00-48.00, weighted average 39.81.
Formula 23,823 head 37.50-51.08, weighted average 42.79
Feeder pigs 40 pounds basis:
Cash 19,900 head 62.00-79.00, weighted average 68.20

NATIONAL DAILY DIRECT PRIOR DAY HOG REPORTS FOR 05/17/24

BARROWS AND GILTS (Carcass Basis): 2,913 head
Base Carcass Price 83.50-90.00, weighted average 89.34

SOWS (Live Basis): 7,413 head
300-500 lbs. 22.00-53.25
Over 500 lbs. 31.00-57.00

MISSOURI WEEKLY DIRECT SLAUGHTER CATTLE REPORT 05/17/24

Weekly Receipts: 280 Week ago: 240 Year ago: 320
Trading as of Friday morning, flat dressed sales 3.00-5.00 higher.
Grid dressed sales inactive.

LIVE STEERS & HEIFERS: No sales reported
DRESSED STEERS & HEIFERS: 5 loads Friday morning 298.00; 2 loads 300.00

GRADE AND WEIGHT (Grid): No Sales reported

Click here for the current [National Crop Progress](#)
Click here for the current [Missouri Crop Progress](#)
The current hay directory can be found at: [Hay Directory](#).