

# Weekly Market Summary

Published by:  
**Missouri Department of Agriculture**  
**Ag Business Development Division**  
**Market News Program**



Chris Chinn, Director  
 Jill Wood, Division Director  
 Tony Hancock, Editor  
[agmarketnews.mo.gov](http://www.ams.usda.gov/marketnews.htm)  
<http://www.ams.usda.gov/marketnews.htm>

Michael L. Parson, Governor

Volume XLIV, Number 34 ♦ P.O. Box 630, Jefferson City, MO 65102 ♦ (573) 751-4211 ♦ Mon, Aug 26, 2024

## MISSOURI WEEKLY FEEDER CATTLE WEIGHTED AVERAGE REPORT

Feeder Cattle Receipts: 19,528 Week ago: 18,848 Year ago: 7,986  
 Steers and Heifers Medium and Large 1—Weighted average weights and prices

### STEERS: Medium and Large 1

283 lbs. 414.61	475 lbs. 316.92	668 lbs. 275.97	875 lbs. 243.73
325 lbs. 372.49	526 lbs. 300.88	730 lbs. 263.93	913 lbs. 235.82
371 lbs. 367.87	571 lbs. 294.62	776 lbs. 250.35	975 lbs. 226.91
420 lbs. 335.22	629 lbs. 284.08	832 lbs. 242.14	

### HEIFERS: Medium and Large 1

327 lbs. 348.44	528 lbs. 271.78	713 lbs. 246.39	936 lbs. 209.99
376 lbs. 301.04	578 lbs. 274.19	763 lbs. 230.80	972 lbs. 212.10
425 lbs. 293.37	623 lbs. 260.41	835 lbs. 232.03	1049 lbs. 195.00
475 lbs. 288.29	683 lbs. 252.86	863 lbs. 220.06	

## MISSOURI STEER (HEIFER) STOCKER FORMULA 08/26/2024

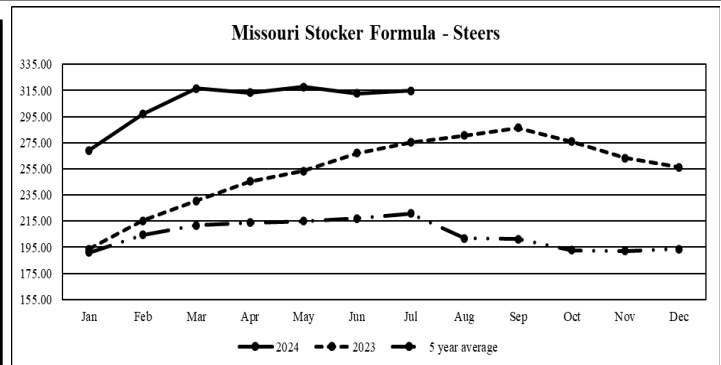
Monday's Missouri Stocker formula consists of **3391 (3811)** head with a weighted average weight of **561.47 (550.92)** lbs. and a price value of **286.88 (267.27)**, 11.09 lower (1.04 lower) than last week.

This a rolling seven day calculated weighted value which combines all Feeder Steers reported by MDA/USDA Market News Service weighing from 400-649 lbs. in the Medium and Large 1 and Medium and Large 1-2 frame and muscle classifications, including all comment cattle except Brahman X. Heifer values are in parentheses.

## MISSOURI WEEKLY CATTLE AUCTION SUMMARY

Total Receipts: 23,530 Week Ago: 19,591 Year Ago: 9,932

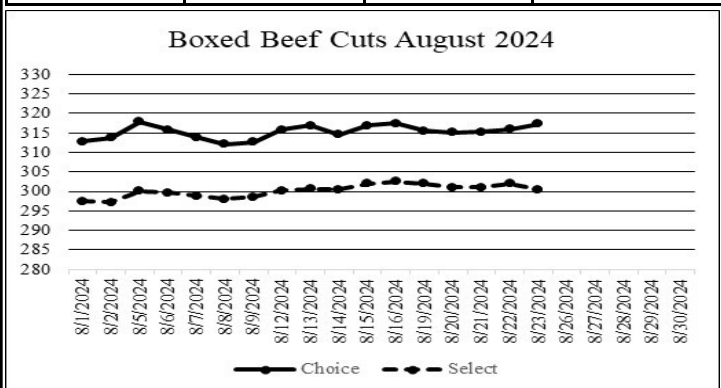
Compared to last week, feeder steers and heifers under 700 lbs. sold 7.00 to 12.00 lower weights over 700 lbs. sold steady to 5.00 lower. Several larger consignments of heavy weight yearlings this week provided poor comparisons on paper where prices would appear slightly higher but overall quality and quantity was much above last week and there were no doubts the market even for high quality reputation cattle has lost some ground. The monthly Cattle on Feed Report was released on Friday and was considered neutral to slightly bearish as actual numbers for on feed and placements were a couple of tenths above the top end of the range of pre-report estimates. Nearly half the state received a half to an inch of rain early in the weekend which is always welcome in late Aug. especially with a very hot week predicted in the upcoming forecast. There is some corn chopping underway now and just a few reports of some corn being shelled already as crops have been ahead of schedule nearly all growing season. A few stick-out sales this week included a part load of 567 lb. steers at Callaway Livestock Center which sold for 333.00, a load of 735 lb. steers at 285.75 and another load of 935 lb. steers at 235.00. Unionville Livestock Market sold six loads of reputation steers weighting in the upper 8's with the top load selling at 255.85. Joplin Regional Stockyards sold 181 head of 581 lb. heifers at 287.00 as well as 152 head of 705 lb. heifers at 255.00. Windsor Livestock Auction sold 213 head of 677 lb. heifers at 261.00. Boxed beef cutouts were slightly lower for the week, choice closed on Friday at 317.34, down 0.11 and select closed at 300.46, down 2.11 compared to last week. Negotiated feedlot sales as of the Friday afternoon report totaled 52K head. Live sales were reported from 183.00-187.50 with any premium for northern cattle mostly gone this week. Dressed sales from 293.00-295.00. The Missouri Stocker formula consists of 3391 head with a weighted average weight of 561.47 lbs. and a price value of 286.88, 11.09 lower than a week ago. The steer/heifer spread is 19.61 that is the closest seen since fall of 2022 and half of what it was in early spring of this year when it climbed to over 40.00 per cwt.



\*Graph is updated the first Monday of each month. Axis value ranges may be updated to reflect data points.

## NATIONAL BOXED BEEF CUTOUT/BOXED BEEF CUTS

DATE	CHOICE	SELECT	TOTAL LOADS
8/19	315.55	302.01	135
8/20	315.05	301.04	137
8/21	315.21	301.08	123
8/22	315.99	302.03	125
8/23	317.34	300.46	126
5 Day Simple Average	315.83	301.32	



\*Axis value ranges may be updated to reflect data points.

## WEEKLY LIVESTOCK SLAUGHTER 08/24/24

	CATTLE	HOGS	SHEEP
Week to Date:	113,000	479,000	4,000
Last Week:	118,000	464,000	3,000
Last Year:	121,051	465,135	3,782

**SOUTHWEST MISSOURI WEEKLY SUMMARY**

(Joplin and Springfield)

Receipts: 7,288 Week ago: 8,123 Year Ago: 4,296  
Compared to last week, early week feeders 5.00 lower to 5.00 higher, late week 2.00 to 8.00 lower, spots 10.00 to 15.00 lower. Slaughter cows steady to 2.00 lower. Slaughter bulls unevenly steady.

**FEEDER STEERS:**  
Medium and Large 1

Table with 2 columns: Weight range and Price range. Rows include 300-400 lbs., 400-500 lbs., 500-600 lbs., 600-700 lbs., 700-800 lbs., 800-900 lbs., 900-1000 lbs.

**FEEDER HEIFERS:**  
Medium and Large 1

Table with 2 columns: Weight range and Price range. Rows include 300-400 lbs., 400-500 lbs., 500-600 lbs., 600-700 lbs., 700-800 lbs., 800-900 lbs., 900-1000 lbs.

**FEEDER HOLSTEIN STEERS**  
Large 3

Scarce

Scarce

**SLAUGHTER COWS:** Breaking and Boning (70-85% lean) 131.00-150.00; high dressing 143.50-160.00; low dressing 117.00-136.00. Lean (85-90%) 118.00-135.50

**SLAUGHTER BULLS:** Yield Grade 1-2 1170-2330 lbs. 161.00-186.00; high dressing 180.00-197.00; low dressing 145.00-165.00

**BRED COWS:** Medium and Large 1 2-8 yrs 1185-1330 lbs 2nd/3rd stage 2375.00-2960.00 per head. Medium and Large 1-2 2-8 yrs 953-1335 lbs 2nd/3rd stage 1825.00-2350.00, 1st stage 1575.00-1935.00; >8 yrs 1090-1360 lbs 2nd/3rd stage 1800.00-2100.00 per head

**COW & CALF PAIRS:** Medium and Large 1-2 2-4 yrs 825 lbs with 150-300 lb calves 2800.00 per pair. Medium and Large 2 2-8 yrs 1075 lbs with 150-300 lb calves 2000.00 per pair

**BRED HEIFERS:**  
Scarce

**SOUTH CENTRAL MISSOURI WEEKLY SUMMARY**

(West Plains, Phillipsburg)

Receipts: 3,566 Week ago: 4,369 Year Ago: 1,122  
Compared to last week, feeder steers and heifers steady to 5.00 lower, calves 3.00 to 8.00 lower, spots 14.00 lower. Slaughter cows steady to 4.00 lower. Slaughter bulls steady to 4.00 higher.

**FEEDER STEERS:**  
Medium and Large 1

Table with 2 columns: Weight range and Price range. Rows include 350-400 lbs., 400-500 lbs., 500-600 lbs., 600-700 lbs., 700-800 lbs., 58 hd 875 lbs., 120hd 980 lbs.

**FEEDER HEIFERS:**  
Medium and Large 1

Table with 2 columns: Weight range and Price range. Rows include 350-400 lbs., 400-500 lbs., 500-600 lbs., 600-700 lbs., 700-800 lbs., 10 hd 816 lbs.

**FEEDER HOLSTEIN STEERS:**  
Large 3

Pkg 542 lbs. 181.00-175.00  
11 hd 610 lbs.

**SLAUGHTER COWS:** Breaking and Boning (70-85% lean) 127.50-143.00, high dressing 143.00-152.00; low dressing 119.00-131.00. Lean (85-90%) 112.50-134.00

**SLAUGHTER BULLS:** Yield Grade 1-2 1228-2165 lbs. 155.00-177.00; high dressing 178.00-205.00; low dressing 135.00-160.00

**BRED COWS:** Medium and Large 1 2-8 yrs 1339 lbs 2nd/3rd stage 2500.00. Medium and Large 1-2 2-8 yrs 1095-1630 lbs 2nd/3rd stage 1800.00-2800.00, 1st stage 1950.00-2175.00 per head

**COW & CALF PAIRS:** Medium and Large 1-2 2-8 yrs 1100-1365 lbs with 150-300 lb calves 2400.00-3150.00; 2-8 yrs 1183 lbs rebred 1st stage with 150-300 lb calves 2650.00 per pair

**WEST CENTRAL MISSOURI WEEKLY SUMMARY**

(Kingsville, Windsor, Butler) w/e 8/9/24

Receipts: 4,722 Two Weeks ago: 3,252 Year ago: 826  
Compared to two weeks ago, steers and heifers mostly steady to 5.00 lower. Slaughter cows uneven from 2.00 lower to 2.00 higher, few spots 5.00 higher.

**FEEDER STEERS:**  
Medium and Large 1

Table with 2 columns: Weight range and Price range. Rows include 400-500 lbs., 500-600 lbs., 600-700 lbs., 700-800 lbs., 800-900 lbs., 21 hd 904 lbs.

**FEEDER HEIFERS:**  
Medium and Large 1

Table with 2 columns: Weight range and Price range. Rows include 400-500 lbs., 500-600 lbs., 600-700 lbs., 700-800 lbs., 800-900 lbs., 27 hd 1049 lbs.

**SLAUGHTER BULLS:** Yield Grade 1-2 1135-2320 lbs 158.00-177.00; high dressing 180.00-192.00; low dressing 144.00-155.00

**SLAUGHTER COWS:** Breaking and Boning (70-85% lean) 133.00-149.00, high dressing 146.00-158.00. Lean (85-90%) 120.00-134.00

**BRED COWS:** Scarce

**COW & CALF PAIRS:** Scarce

**NORTHEAST MISSOURI WEEKLY SUMMARY**

(Bowling Green, Kingdom City, Palmyra)

Receipts: 3,703 Week ago: 2,828 Year ago: 721  
Compared to last week, early week steady to firm, spots 7.00 to 10.00 higher, late week calves 10.00 to 15.00 lower, others lower undertone. Slaughter cows uneven 5.00 lower to 5.00 higher.

**FEEDER STEERS:**  
Medium and Large 1

Table with 2 columns: Weight range and Price range. Rows include 400-500 lbs., 500-600 lbs., 600-700 lbs., 700-800 lbs., 800-900 lbs., 900-1000 lbs.

**FEEDER HEIFERS:**  
Medium and Large 1

Table with 2 columns: Weight range and Price range. Rows include 400-500 lbs., 500-600 lbs., 600-700 lbs., 700-800 lbs., 800-900 lbs., 15 hd 945 lbs.

**SLAUGHTER BULLS:** Yield Grade 1-2 1310-2425 lbs 155.00-174.00; high dressing 174.00-186.00; low dressing 130.00-162.00

**SLAUGHTER COWS:** Breaking and Boning (70-85% lean) 128.00-142.00; high dressing 138.00-159.00; low dressing 119.50-131.00. Lean (85-90%) 118.00-131.00

**SLAUGHTER STEERS:** Choice 2 -3 183.00-189.50.

**SLAUGHTER HEIFERS:** Choice 2-3 184.00-191.00. Select and Choice 1-3 175.00-179.00

**BRED COWS:** Medium and Large 1-2 2-8 yrs 2nd stage 1900.00-2065.00, 3rd stage 2500.00-3300.00; >5 yrs 1157-1440 lbs 3rd stage 1700.00-2000.00 per head

**BRED HEIFERS:** Medium and Large 1-2 5-8 yrs 1100-1500 lbs rebred 1st stage with 150-300 lb calves 2825.00-3525.00; 2-8 yrs 1050-1450 lbs rebred 1st stage with >300 lb calves 3100.00-4000.00 per pair

**NORTH CENTRAL MISSOURI WEEKLY SUMMARY**

(Macon, Unionville, Green City, New Cambria)

Receipts: 1,254 Week ago: 1,049 Year ago: 1,081  
No recent sales for a price comparison, undertones lower. Slaughter cows 2.00 to 4.00 lower.

**FEEDER STEERS:**  
Medium and Large 1

Table with 2 columns: Weight range and Price range. Rows include 400-500 lbs., 500-550 lbs., 600-700 lbs., 43 hd 749 lbs., 800-900 lbs.

**FEEDER HEIFERS:**  
Medium and Large 1

Table with 2 columns: Weight range and Price range. Rows include 40 hd 554 lbs., 64 hd 838 lbs.

**SLAUGHTER BULLS:** Yield Grade 1-2 1250-1830 lbs. 159.00-187.00

**SLAUGHTER COWS:** Breaking and Boning (70-85% lean) 128.00-146.00, high dressing 145.00-153.00. Lean (85-90%) 119.00-128.00

**BRED COWS:** Scarce

**BRED HEIFER:** Scarce

\*Some sale barns on a bi-weekly schedule and may not have a sale each week.

**SOUTHEAST MISSOURI WEEKLY SUMMARY**

(Jackson and Farmington)

Receipts: 1,473 Week ago: 744 Year ago: 341  
 Compared to last week, steers and heifers 1.00 to 9.00 lower, except 600 lbs steers and 600-700 lbs heifers 2.00 to 8.00 higher. Slaughter cows 3.00 to 7.00 higher. Slaughter bulls 3.00 to 5.00 higher.

**FEEDER STEERS:**  
 Medium and Large 1

300-400 lbs. 300.00-365.00  
 400-500 lbs. 295.00-330.00  
 500-600 lbs. 261.00-302.00  
 600-700 lbs. 235.00-275.00  
 700-800 lbs. 235.00-260.00  
 800-850 lbs. 234.00-235.00

**FEEDER HEIFERS:**  
 Medium and Large 1

350-400 lbs. 280.00-305.00  
 400-500 lbs. 255.00-288.00  
 500-600 lbs. 237.00-265.00  
 600-700 lbs. 220.00-257.00  
 700-800 lbs. 210.00-235.00

**SLAUGHTER BULLS:** Yield Grade 1-2 1250-1985 lbs 134.00-155.00, high dressing 156.00-175.00

**SLAUGHTER COWS:** Breaking and Boning (75-85% lean) 120.00-134.00; high dressing 132.00-160.00. Lean (85-90% lean) 97.00-120.00

**BRED COWS:** Medium and Large 2 2-8 yrs 1045-1530 lbs 2nd/3rd stage 2025.00-2175.00 per head

**COW & CALF PAIRS:** Medium and Large 2 couple pairs 2-8 yrs 1350 lbs rebred 2nd stage with 150-300 lb calves 2400.00 per pair

**EAST CENTRAL MISSOURI WEEKLY SUMMARY**

(Cuba, Vienna)

Receipts: 466 Week ago: 2,125 Year ago: 1,274  
 No price trend established on feeders. Slaughter cows 1.00 to 2.00 lower.

**FEEDER STEERS:**  
 Medium and Large 1

400-500 lbs. 300.00-325.00  
 500-600 lbs. 274.00-306.00  
 600-700 lbs. 260.00-278.00

**FEEDER HEIFERS:**  
 Medium and Large 1

400-450 lbs. 275.00-302.00  
 500-600 lbs. 259.00-272.50  
 Pkg 655 lbs. 240.00  
 800-900 lbs. 200.00-207.50

**SLAUGHTER BULLS:** Yield Grade 1-2 1365-2005 lbs 156.00-165.00

**SLAUGHTER COWS:** Breaking and Boning, (70-85% lean) 136.00-146.00; high dressing 147.00-149.00. Lean (85-90%) 129.00-136.50

**BRED COWS:** Scarce

**COW & CALF PAIRS:** Scarce

**NORTHWEST MISSOURI WEEKLY SUMMARY**

(Tina)

Receipts: 1,058 Two Weeks Ago: 2,055 Year Ago: 698  
 Too few feeders for a market comparison. Slaughter cows 4.00 to 7.00 lower.

**FEEDER STEERS:**  
 Medium and Large 1

Pkg 308 lbs. 370.00  
 400-450 lbs. 317.50-331.00  
 660-650 lbs. 285.00-300.00  
 700-750 lbs. 260.00-266.00

**FEEDER HEIFERS:**  
 Medium and Large 1

Pkg 327 lbs. 377.50  
 400-500 lbs. 297.50-324.00

**SLAUGHTER BULLS:** Yield Grade 1-2 1300-2250 lbs 165.00-183.00, high dressing 185.50-196.00.

**SLAUGHTER COWS:** Breaking and Boning, (70-85% lean) 127.50-147.00, high dressing 147.00-156.00. Lean (85-90%) 106.00-125.00

**BRED COWS:** Medium and Large 1-2 2-8 yrs 1055-1285 lbs 2nd/3rd stage 2100.00-3000.00, 1st stage 1650.00-1950.00; 5-8 yrs 1108-1267 lbs 2nd/3rd stage 1950.00-2400.00, 1st stage 1850.00 per head

**COW/CALF PAIRS:**

**AFTERNOON NATIONAL SLAUGHTER CATTLE REVIEW**

Thus far for Friday all trading regions negotiated cash trade has been mostly inactive on light demand. On Wednesday in Texas Panhandle live FOB purchases traded at 183.00. Last week in Kansas live FOB purchases traded at 185.00. Last week in Nebraska live FOB purchases traded at 190.00. The most recent dressed delivered market in Nebraska was Tuesday with purchases from 293.00-295.00 mostly at 295.00. The most recent market in the Western Cornbelt was Tuesday with live FOB purchases traded at 187.50, while dressed delivered purchases traded from 293.00-295.00, on a light test.

Negotiated Cash Sales:					
Confirmed:	2,426	Week Ago:	35,440	Year Ago:	5,452
Week to date:	52,602	Week Ago:	51,376	Year Ago:	61,123

Live Basis	Steers	Heifers
Over 80% Choice	183.00-184.00, avg 183.76	184.50
65-80% Choice	183.00-184.00, avg 183.55	183.00
35-65% Choice	-	-
0-35% Choice	-	-
Total All Grades	183.00-184.00, avg 183.58	183.00-184.50, avg 184.14
Dressed Basis		
Over 80% Choice	-	-
65-80% Choice	-	-
35-65% Choice	-	-
0-35% Choice	-	-
Total All Grades	-	-

All Beef Type Steers/Heifers	Head	Avg Wt	Price Range	Wtd Avg
Live FOB	2,181	1,385.4	183.00-186.00	183.74
Live Del	119	1,292.6	184.00-190.00	185.76
Dressed Del	38	885.5	292.00	292.00
Dressed FOB	-	-	-	-

**WEEKLY COMMODITY FUTURES TRENDS**

Compared to last week, Live Cattle Aug 0.23 lower and others 2.12 to 2.92 lower, Lean Hogs 1.85 to 5.48 higher, Feeder Cattle Aug and Sep 0.20 to 0.93 lower and others 1.58 to 3.38 lower.

Daily Futures Closes

	Mon.	Tues.	Wed.	Thu.	Fri.
Cattle					
Aug	182.80	181.02	181.22	182.55	182.57
Oct	179.02	175.60	174.62	175.90	175.70
Dec	178.37	175.10	174.27	175.52	175.20
Feb	179.32	175.92	175.35	176.65	176.47
Apr	180.37	177.12	176.85	178.22	178.10
Lean Hogs					
Oct	76.80	76.40	76.15	79.62	80.55
Dec	68.75	68.10	67.87	70.27	70.75
Feb	72.22	71.57	71.52	73.35	73.82
Apr	77.15	76.80	76.82	78.25	78.52
May	82.67	82.15	82.20	83.35	83.17
Fdr Cat					
Aug	242.37	238.20	239.25	241.97	242.57
Sep	239.27	234.50	235.67	238.20	238.57
Oct	235.87	234.32	231.67	234.25	234.37
Nov	234.32	229.85	229.92	231.95	231.60
Jan	232.02	227.62	227.97	229.75	229.17
Milk					
Aug	20.62	20.60	20.65	20.67	20.66
Sep	22.30	22.50	22.61	21.98	21.79
Oct	22.45	22.68	22.85	22.19	22.30

**WEEKLY COMMODITY GRAIN FUTURES TRENDS**

Compared to last week, Soybeans 0.13 to 0.16 higher, Wheat 0.22 to 0.28 lower, Corn 0.01 to 0.04 lower, KC Wheat 0.20 lower, Soybean Meal 1.70 to 2.90 higher.

**Daily Grain Futures Closes**

	Mon.	Tues.	Wed.	Thu.	Fri.
<b>Soybeans</b>					
Sep	956 1/4	957 1/4	963	941 1/4	952
Nov	976	976	981 1/2	961 1/2	973
Jan	994 1/2	994 1/4	999 3/4	979 1/2	990 3/4
Mar	1009 3/4	1009 1/2	1014 3/4	995 1/4	1006 1/4
May	1024 1/2	1025	1029 1/2	1010 1/2	1021 1/2
<b>Wheat</b>					
Sep	528 1/4	533	519 3/4	511	502 1/4
Dec	552 1/4	556 1/2	544	535 1/2	528
Mar	572	576 1/4	564 3/4	556 1/4	549
May	584 1/4	587 1/2	576 3/4	568 1/4	560 3/4
Jul	589 1/2	592 1/2	582 3/4	574 1/4	567
<b>Corn</b>					
Sep	378	375	375 1/2	371 1/2	367 3/4
Dec	400 1/4	398	398 1/4	393 1/2	391
Mar	419 1/4	417 3/4	417	411 1/2	409 1/2
May	429 1/4	427 3/4	426 1/2	421 1/2	420
Jul	435	433 1/2	432	427 3/4	427
<b>KC Wheat</b>					
Sep	540 3/4	546	536 1/4	529 1/4	520
Dec	556 1/2	561 1/4	551 3/4	545	535
Mar	569	574 1/2	565	558 1/4	548 1/4
May	576 3/4	581 3/4	572 3/4	565 3/4	556
Jul	580 3/4	585	576 1/2	569 3/4	560 1/2
<b>SB Meal</b>					
Sep	311.70	312.30	312.50	306.40	306.30
Oct	308.10	306.10	306.60	302.20	302.30
Dec	310.50	308.30	308.70	304.10	304.50
Jan	311.80	310.10	310.50	305.70	305.90
Mar	315.10	313.50	314.10	309.10	309.10

**MISSOURI GRAIN WEEKLY TRENDS**

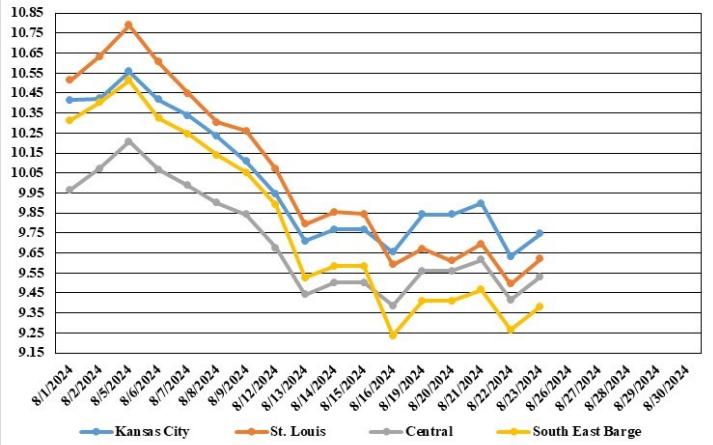
Compared to last week, Soybeans 0.02 to 0.16 higher, Wheat 0.33 to 0.56 lower, Corn 0.02 to 0.12 lower, Sorghum 0.01 to 0.02 lower.

Area	#1 Soybeans	#2 Soft Wheat	#2 Corn	#2 Grain Sorghum
<b>Kansas City</b>				
Friday**	9.52-9.82	5.10	3.65-3.80	3.80
Monday	9.71-10.01	5.08	3.73-3.88	3.88
Tuesday	9.71-10.01	5.13	3.70-3.75	3.85
Wednesday	9.77-10.07	4.95	3.71-3.76	3.86
Thursday	9.47-9.87	4.86	3.67-3.72	3.82
Friday	9.58-9.98	4.77	3.63-3.68	3.78
<b>St. Louis</b>				
Friday**	9.57-9.61	5.08-5.10	3.65-3.69	4.42
Monday	9.66-9.68	5.09-5.14	3.69-3.89	4.50
Tuesday	9.60-9.62	5.13-5.19	3.61-3.65	4.48
Wednesday	9.70	4.85-4.95	3.67-3.70	4.48
Thursday	9.50	4.61-4.86	3.66	4.43
Friday	9.61-9.63	4.52-4.77	3.62-3.67	4.41
<b>Central</b>				
Friday**	9.32-9.42	5.00-5.05	3.55-3.60	---
Monday	9.46-9.61	4.98-5.03	3.63-3.68	---
Tuesday	9.46-9.61	5.03-5.08	3.60-3.65	---
Wednesday	9.52-9.67	4.90-4.95	3.61-3.66	---
Thursday	9.32-9.47	4.81-4.86	3.57-3.62	---
Friday	9.43-9.58	4.72-4.77	3.53-3.58	---
<b>S.E. MO</b>				
Friday**	9.10-9.37	5.10	3.34-3.55	---
Monday	9.41	5.08	3.38-3.63	---
Tuesday	9.41	5.13	3.38-3.55	---
Wednesday	9.47	4.70	3.38-3.50	---
Thursday	9.27	4.61	3.42-3.57	---
Friday	9.38	4.52	3.36-3.53	---

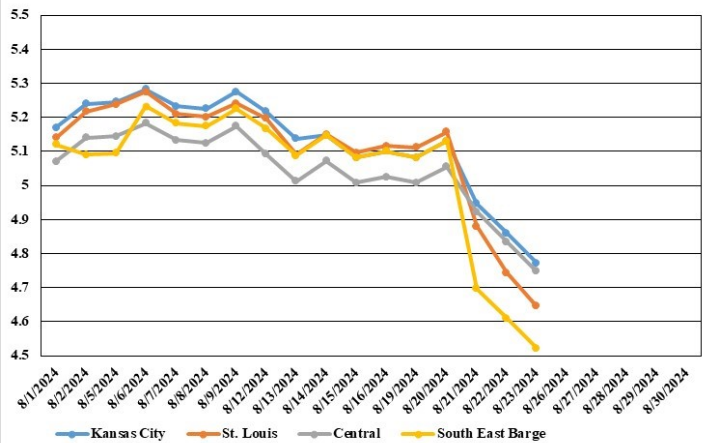
(PRICES PER BUSHEL) \*NEW CROP \*\*PREVIOUS WEEK'S PRICES  
\*Bids calculated using Kansas City, St. Louis, and St. Joseph bids

**MONTHLY GRAIN CROP**

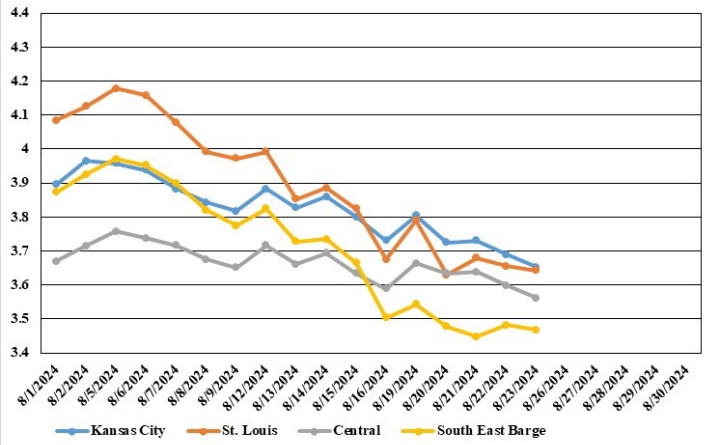
**August 2024 Soybean Bids**



**August 2024 Wheat Bids**



**August 2024 Corn Bids**



\*Axis value ranges may be updated to reflect data points.

**WHOLESALE FEEDSTUFFS PRICES  
(DOLLARS PER TON-BULK BASIS)**

Area	Soybean Hulls Pellets	Soybean Meal 46.5-48%	Corn Gluten Pellets 21%	Wheat Middlings
Kansas City	160.00	336.30	175.00	108.33
St. Louis	n/a	n/a	169.00	89.00



## MISSOURI CROP PROGRESS AND CONDITION

There were 4.5 days suitable for fieldwork in the week ending August 18, 2024. Statewide, the average temperature was 76.3 degrees, 0.1 degrees above normal. Precipitation averaged 1.89 inches, 1.01 inches above normal. Topsoil moisture supply was rated 13 percent short, 81 percent adequate, and 6 percent surplus. Subsoil moisture supply was rated 10 percent short, 81 percent adequate, and 9 percent surplus. Corn dough reached 92 percent, compared to the 5-year average of 85 percent. Corn dented reached 64 percent, compared to the 5-year average of 44 percent. Corn mature reached 7 percent, compared to the 5-year average of 1 percent. Corn condition was rated 4 percent very poor, 4 percent poor, 13 percent fair, 60 percent good, and 19 percent excellent. Soybeans blooming reached 89 percent, compared to the 5-year average of 88 percent. Soybeans setting pods reached 74 percent, compared to the 5-year average of 67 percent. Soybeans dropping leaves reached 1 percent. Soybean condition was rated 2 percent very poor, 4 percent poor, 14 percent fair, 65 percent good, and 15 percent excellent. Cotton setting bolls reached 80 percent, compared to the 5-year average of 81 percent. Cotton bolls opening reached 2 percent, equal to the 5-year average. Cotton condition was rated 3 percent very poor, 7 percent poor, 32 percent fair, and 58 percent good. Rice headed reached 90 percent, compared to the 5-year average of 82 percent. Rice condition was rated 3 percent very poor, 7 percent poor, 17 percent fair, 72 percent good, and 1 percent excellent.

	Week Ending			5 yr avg.
	8/18/24	8/11/24	8/18/23	
Corn Dough	92	86	90	85
Corn Dented	64	44	52	44
Corn Matures	7	0	2	1
Soybeans Blooming	89	84	93	88
Soybeans Setting Pods	74	64	80	67
Soybeans Dropping	1	0	0	0
Cotton Setting Bolls	80	66	88	81
Cotton bolls opening	2	0	0	2
Rice Headed	90	81	84	82
Alfalfa hay 3rd cutting	72	61	65	64

### MISSOURI WEEKLY HAY SUMMARY

As expected last week's rains did provide some improvement to the drought monitor. There is still just over 30 percent of the state listed as abnormally dry and with a couple of smaller areas moderately dry. All in all, though for late August conditions are not too bad. A few cooler evenings with some heavy dews have helped to keep most areas green. Still some haying going on and corn chopping is taking place in parts of the state. Hay movement remains slow with a lot of hay being offered for sale across the state. Hay prices are mostly steady. The supply of hay is moderate to heavy, and demand is light. The Missouri Department of Agriculture has a hay directory at <https://apps.mda.mo.gov/haydirectory> or visit the University of Missouri Extension feed stuff finder at <https://feedstufffinder.org>

Alfalfa - Supreme 250.00-300.00, small square 8.00-12.00 per bale  
 Alfalfa - Premium 200.00-250.00  
 Alfalfa - Good 150.00-200.00, small square 5.00-10.00 per bale  
 Alfalfa - Fair 125.00-150.00  
 Mixed grass - Good/Premium 150.00-200.00  
 Mixed grass-Fair/Good 100.00-150.00, small square 3.50-8.00 per bale  
 Mixed grass - Fair 40.00-65.00 per large round bale  
 Wheat straw - 4.00-7.00 per small square bale

Please Note: The above volumes (tonnage, acres, and bales) listed are for confirmed trades only, it does not include estimated volume (tonnage) for bids or offers to the trade. List your hay for sale at: [Hay Listing Online Form](#). Explanation of Hay Quality Guidelines: [Hay Quality Designation Guidelines](#). Glossary of Terms: [Livestock, Poultry, & Grain Hay Terms](#)

## MISSOURI WEEKLY SHEEP/GOAT AUCTION SUMMARY

Receipts: 2,487 Week Ago: 1,407 Last Year: 1,461  
**SHEEP:** Feeder Lambs: Small and Medium 1-2 hair 20-30 lbs. 214.00-240.00; 30-40 lbs. 220.00-260.00, thin 205.00; 40-50 lbs. 215.00-255.00, thin 200.00; pkg 51 lbs. 200.00.  
 Slaughter lambs Choice and Prime 1-3 w/s 16 hd 58 lbs 242.50; 11 hd 62 lbs 237.50; 70-80 lbs. 212.50-220.00. Choice and Prime 1-3 hair 50-70 lbs. 225.00-250.00; 70-80 lbs 200.00-235.00; 80-90 lbs. 200.00-210.00; pkg 109 lbs. 170.00. Choice 1-3 hair 50-70 lbs. 200.00-220.00.  
 Slaughter ewes Good 2-3 hair 10 hd 105 lbs 125.00/hd. Utility and Good 1-3 hair 90-160 lbs 90.00-100.00.  
 Slaughter bucks 1-2 pkg 205 lbs 115.00. Bucks 1-2 hair pkg 133 lbs 115.00.  
 Replacement ewes Small and Medium 102 hair pkg <1 yrs 85 lbs exp 175.00/hd; <1 yrs 92 lbs open 205.00/hd; 2-4 yrs 14 hd 87 lbs exp 155.00/hd; 100-115 lbs exp 130.00-155.00/hd.  
**GOATS:** Feeder kids Selection 1 13 hd 36 lbs 295.00; 40-50 lbs 270.00-285.00. Selection 2 30-40 lbs 210.00-225.00; 40-50 lbs 200.00-265.00, pygmies 180.00-190.00.  
 Slaughter kids Selection 1 50-80 lbs 270.00-312.50. Selection 2 50-60 lbs 210.00-260.00, pygmies 200.00; 60-70 lbs 230.00-250.00; 70-80 lbs 225.00-230.00; 80-90 lbs 215.00-260.00; pkg 100 lbs 240.00.  
 Slaughter nannies/does Selection 1-2 100-150 lbs 110.00-145.00. Selection 1-2 11 hd 65 lbs thin 62.50/hd; 80-90 lbs 120.00-145.00/hd.  
 Slaughter bucks/billies Selection 1-2 80-100 lbs 150.00-185.00; 100-130 lbs 135.00-185.00.  
 Wethers Selection 1-2 pkg 89 lbs 265.00; 100-115 lbs 235.00-237.50.  
 Wether kids Selection 1 60-70 lbs 250.00-260.00.

Explanatory Notes: Stage - Represents estimated lambing/kidding period (Open, Exp=exposed, Bred, Fall = Sep-Nov, Win = Dec-Feb, Spr = Mar-May, Sum=Jun-Aug; w/s = woolled and shorn; /hd= per head; /fam=per family  
 All price CWT unless otherwise noted.

### MISSOURI DROUGHT MONITOR

Date	None	D0	D1	D2	D3	D4
8/20/24	68.67	28.46	2.87	0	0	0
8/13/24	55.17	38.91	5.92	0	0	0
8/22/23	27.67	19.46	32.70	15.04	5.13	0

Reflects percentage of Missouri impacted by drought. D0 Abnormally Dry; D1 Moderate Drought; D2 Severe Drought; D3 Extreme Drought; D4 Exceptional Drought

### NATIONAL DIRECT DELIVERED FEEDER PIG REPORT

08/23/24 Receipts: 118,905 Week ago: 119,279 Year Ago: 95,536  
 Early weaned pigs 2.00 higher and feeder pigs 3.00 higher.  
 Cash 86,683 head 22.00-35.00, weighted average 29.52  
 Formula 23,972 head 29.69-55.18, weighted average 39.61  
 Feeder pigs 40 pounds basis:  
 Cash 8,250 head 46.00-54.00, weighted average 50.87

### NATIONAL DAILY DIRECT PRIOR DAY HOG REPORTS FOR 08/22/24

**BARROWS AND GILTS (Carcass Basis):** 1,794 head  
 Base Carcass Price 81.00-84.50, weighted average 82.65  
**SOWS (Live Basis):** 6,364 head  
 300-500 lbs. 28.00-86.44  
 Over 500 lbs. 60.50-87.00

### MISSOURI WEEKLY DIRECT SLAUGHTER CATTLE REPORT 08/22/24

Weekly Receipts: 200 Week ago: 360 Year ago: 280  
 Trading as of Friday morning, flat dressed sales 4.00 to 5.00 lower, grid dressed sales inactive.

**LIVE STEERS & HEIFERS:** No sales reported  
**DRESSED STEERS & HEIFERS:** 4 loads Wed and Thu flat 293.00-294.00

**GRADE AND WEIGHT (Grid):** 4 loads Fri morning 304.00

Click here for the current [National Crop Progress](#)  
 Click here for the current [Missouri Crop Progress](#)  
 The current hay directory can be found at: [Hay Directory](#).