

Weekly Market Summary

Published by:
Missouri Department of Agriculture
Ag Business Development Division
Market News Program



Chris Chinn, Director
 Jill Wood, Division Director
 Tony Hancock, Editor
<http://www.ams.usda.gov/marketnews.htm>
<http://www.ams.usda.gov/marketnews.htm>

Michael L. Parson, Governor

Volume XLIV, Number 36 ♦ P.O. Box 630, Jefferson City, MO 65102 ♦ (573) 751-4211 ♦ Mon, Sep 09, 2024

MISSOURI WEEKLY FEEDER CATTLE WEIGHTED AVERAGE REPORT

Feeder Cattle Receipts: 10,237 Week ago: 13,515 Year ago: 11,329
 Steers and Heifers Medium and Large 1—Weighted average weights and prices

STEERS: Medium and Large 1

268 lbs. 383.00	472 lbs. 315.43	672 lbs. 274.72	871 lbs. 240.11
326 lbs. 351.93	517 lbs. 305.95	721 lbs. 262.97	929 lbs. 230.22
376 lbs. 331.29	576 lbs. 292.66	764 lbs. 248.86	
432 lbs. 323.27	622 lbs. 286.08	812 lbs. 245.95	

HEIFERS: Medium and Large 1

330 lbs. 310.37	580 lbs. 266.63	772 lbs. 243.27	976 lbs. 209.27
422 lbs. 296.99	615 lbs. 264.62	830 lbs. 237.60	
474 lbs. 289.76	673 lbs. 253.49	882 lbs. 235.79	
533 lbs. 280.33	727 lbs. 232.22	916 lbs. 213.36	

MISSOURI STEER (HEIFER) STOCKER FORMULA 09/09/2024

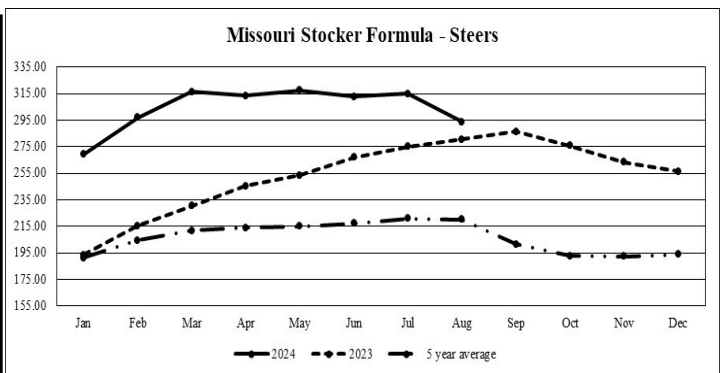
Monday's Missouri Stocker formula consists of **1485 (1599)** head with a weighted average weight of **549.43 (541.80)** lbs. and a price value of **287.53 (265.34)**, 5.28 higher (6.14 higher) than last week.

This a rolling seven day calculated weighted value which combines all Feeder Steers reported by MDA/USDA Market News Service weighing from 400-649 lbs. in the Medium and Large 1 and Medium and Large 1-2 frame and muscle classifications, including all comment cattle except Brahman X. Heifer values are in parentheses.

MISSOURI WEEKLY CATTLE AUCTION SUMMARY

Total Receipts: 14,065 Week Ago: 15,841 Year Ago: 15,395

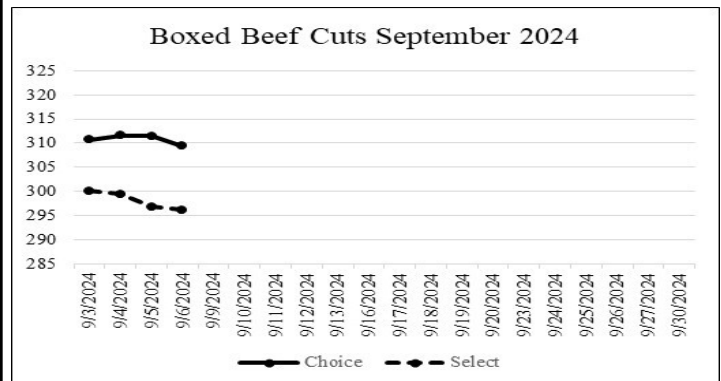
Compared to last week, a light test of steers and heifers mostly steady to 5.00 higher, however there were some spots 3.00 to 5.00 lower. The shortened holiday week had many of the early week sales closed. Demand was moderate to good and supply light. Temperatures are starting to swing, with cooler temperatures in the morning and overnight. Buyers are going to be calculating health risks involved with unweaned or unvaccinated calves. In addition to the shortened week, minds are starting to focus on harvest season. Combines are starting to roll out, end rows are being tested and quite a few fields have been put in the bins. In feedlot trade, there were 58,501 negotiated cash sales last week. There were live sales from 180.00 to 185.00 and dressed delivered sales 288.00 to 289.00. Boxed beef closed on Friday at 309.41 for Choice and 296.12 for Select, 0.07 higher and 0.30 lower, respectively. For the week ending August 31, packer margins came in at 10.43 and feedlot margins at 38.46. Monday's Missouri Stocker formula consisted of 1485 head with a weighted average weight of 549.43 lbs. and a price value of 287.53, 5.28 higher than a week ago. The steer/heifer spread was 22.19.



*Graph is updated the first Monday of each month. Axis value ranges may be updated to reflect data points.

NATIONAL BOXED BEEF CUTOFF/BOXED BEEF CUTS

DATE	CHOICE	SELECT	TOTAL LOADS
8/30	309.34	295.82	98
9/3	310.67	300.11	105
9/4	311.60	299.39	169
9/5	311.51	296.78	135
9/6	309.41	296.12	135
5 Day Simple Average	310.80	298.10	



*Axis value ranges may be updated to reflect data points.

WEEKLY LIVESTOCK SLAUGHTER 09/07/24

	CATTLE	HOGS	SHEEP
Week to Date:	499,000	1,932,000	27,000
Last Week:	597,000	2,392,000	34,000
Last Year:	511,478	1,897,150	31,827

The Weekly Market Summary, as well as historical summaries, are available on our website <https://agmarketnews.mo.gov/summaries>
 Market News Hotline: 1-573-522-9244
 Check out the latest updates on our YouTube Channel: [MDA Market News](https://www.youtube.com/channel/UCMjKjKjKjKjKjKjKjKjKjKj)

SOUTHWEST MISSOURI WEEKLY SUMMARY

(Joplin and Springfield)

Receipts: 2,632 Week ago: 8,129 Year Ago: 1,241
Compared to last week, steers and heifers mostly 4.00 to 8.00 higher, spots up to 10.00 higher. Slaughter cows 3.00 to 6.00 lower. Slaughter bulls 6.00 to 10.00 lower.

FEEDER STEERS:
Medium and Large 1

Table with 2 columns: Weight (400-500 lbs to 800-900 lbs) and Price Range (287.00-322.00 to 230.00-253.00)

FEEDER HEIFERS:
Medium and Large 1

Table with 2 columns: Weight (400-500 lbs to 700-800 lbs) and Price Range (277.00-287.00 to 221.00-242.50)

FEEDER HOLSTEIN STEERS
Large 3

Scarce Scarce

SLAUGHTER COWS: Breaking and Boning (70-85% lean) 124.00-139.00; high dressing 137.00-151.00; low dressing 112.00-125.50. Lean (85-90%) 114.00-129.00

SLAUGHTER BULLS: Yield Grade 1-2 1280-2490 lbs. 154.00-172.00; high dressing 172.00-179.00; low dressing 138.00-160.00

BRED COWS: Medium and Large 1 2-8 yrs 1170-1430 lbs 2nd/3rd stage 2600.00-3200.00. Medium and Large 1-2 2-8 yrs 965-1420 lbs 2nd/3rd stage 1700.00-2500.00, 1st stage 1950.00 per head

BRED HEIFERS: Medium and Large 1 2-4 yrs 1110-1140 lbs 2nd/3rd stage 2400.00-2785.00 per head

COW & CALF PAIRS: Medium and Large 1 2-8 yrs 1165 1s with baby calves 3000.00-3650.00. Medium and Large 1-2 2-8 yrs 945-1170 lbs with baby to over 300 lb calves 2250.00-3050.00; 2-8 yrs 1120-1170 lbs rebred 1st stage with >300 lb calves 2800.00-3100.00 per pair

SOUTH CENTRAL MISSOURI WEEKLY SUMMARY

(West Plains, Phillipsburg)

Receipts: 3,307 Week ago: 2,758 Year Ago: 4,078
Compared to last week, feeders uneven with early week sales steady to 5.00 higher and late week steer calves 4.00 to 7.00 lower, yearling steers and all heifers mostly steady to firm. Slaughter cows 3.00 lower to 3.00 higher.

FEEDER STEERS:
Medium and Large 1

Table with 2 columns: Weight (300-400 lbs to 800-900 lbs) and Price Range (320.00-360.00 to 227.00-243.00)

FEEDER HEIFERS:
Medium and Large 1

Table with 2 columns: Weight (300-400 lbs to 800-900 lbs) and Price Range (282.50-312.00 to 215.00-221.50)

FEEDER HOLSTEIN STEERS:
Large 3

Scarce Scarce

SLAUGHTER COWS: Breaking and Boning (70-85% lean) 124.00-139.00, high dressing 139.00-149.00; low dressing 114.00-126.00. Lean (85-90%) 107.50-129.00

SLAUGHTER BULLS: Yield Grade 1-2 1292-2335 lbs. 153.50-173.00; high dressing 177.00-184.00; low dressing 120.00-153.00

BRED COWS: Medium and Large 1-2 2-8 yrs 955-1780 lbs 2nd/3rd stage 1800.00-2600.00, 1st stage 1975.00 per head

BRED HEIFERS: Medium and Large 1-2 <2 yrs 832-1000 lbs 1st to 3rd stage 1675.00-2150.00 per head

COW & CALF PAIRS: Medium and Large 1-2 2-8 yrs 1095-1368 lbs with 150 to >300 lb calves 2400.00-2525.00; 2-8 yrs 1200-1665 lbs rebred 1st to 2nd stage with 150 to >300 lb calves 2500.00-2650.00 per pair

WEST CENTRAL MISSOURI WEEKLY SUMMARY

(Kingsville, Windsor, Butler)

Receipts: 2,615 Week ago: 1,520 Year ago: 2,410
Compared to last week, steers and heifers steady to 5.00 higher. Slaughter cows steady to 4.00 lower.

FEEDER STEERS:
Medium and Large 1

Table with 2 columns: Weight (400-500 lbs to 122 hd 802 lbs) and Price Range (300.00-344.00 to 245.35)

FEEDER HEIFERS:
Medium and Large 1

Table with 2 columns: Weight (400-500 lbs to 700-800 lbs) and Price Range (282.00-311.00 to 230.00-260.50)

SLAUGHTER BULLS: Yield Grade 1-2 1260-2170 lbs 155.00-176.50; high dressing 172.00-185.00; low dressing 126.00-150.00

SLAUGHTER COWS: Breaking and Boning (70-85% lean) 126.00-141.00, high dressing 136.00-148.00. Lean (85-90%) 113.00-127.50

BRED COWS: Medium and Large 1-2 5-8 yrs 1298 lbs 3rd stage 2175.00 per head

COW & CALF PAIRS: Scarce

NORTHEAST MISSOURI WEEKLY SUMMARY

(Bowling Green, Kingdom City, Palmyra)

Receipts: 1,560 Week ago: 1,493 Year ago: 3,038
Compared to last week, feeders steady to firm on limited comparisons. Slaughter cows steady.

FEEDER STEERS:
Medium and Large 1

Table with 2 columns: Weight (400-500 lbs to 500-550 lbs, Pkg 658 lbs) and Price Range (312.00-338.00 to 270.00)

FEEDER HEIFERS:
Medium and Large 1

Table with 2 columns: Weight (450-500 lbs) and Price Range (289.00-300.00)

SLAUGHTER BULLS: Yield Grade 1-2 1375-2260 lbs 158.00-170.00; high dressing ind 175.00; low dressing 150.00-156.00

SLAUGHTER COWS: Breaking and Boning (70-85% lean) 127.00-138.50; high dressing 137.00-145.00; low dressing 115.00-127.00. Lean (85-90%) 120.00-132.00

SLAUGHTER STEERS: Choice 2-3 180.00-183.00.

SLAUGHTER HEIFERS: Choice 2-3 180.50-181.50.

BRED COWS: Medium and Large 1 2-8 yrs 1043-1550 lbs 2nd stage 2500.00-2700.00, 3rd stage 2800.00-3350.00. Medium and Large 1-2 2-8 yrs 997-1418 lbs 2nd to 3rd stage 2150.00-2750.00, 1st stage 1925.00 per head

COW/CALF PAIRS: Medium and Large 1 2-8 yrs 1200-1500 lbs rebred 2nd stage with >300 lb calves 3500.00-3900.00. Medium and Large 1-2 2-8 yrs 1000-1450 lbs with 150-300 lb calves 2700.00-3150.00 per pair

NORTH CENTRAL MISSOURI WEEKLY SUMMARY

(Macon, Unionville, Green City, New Cambria)

Receipts: 3,951 Week ago: 1,025 Year ago: 4,628
Compared to last week, feeders steady to firm on comparable sales. Slaughter cows mostly steady.

*Some sale barns on a bi-weekly schedule and may not have a sale each week.

FEEDER STEERS:
Medium and Large 1

Table with 2 columns: Weight (400-500 lbs to 800-900 lbs) and Price Range (313.00-360.00 to 245.25-253.75)

FEEDER HEIFERS:
Medium and Large 1

Table with 2 columns: Weight (400-500 lbs to 800-850 lbs) and Price Range (287.00-312.00 to 224.25-234.50)

SLAUGHTER BULLS: Yield Grade 1-2 1350-2445 lbs 159.00-178.00; high dressing few 173.00-175.00; low dressing 153.00-163.00

SLAUGHTER COWS: Breaking and Boning (70-85% lean) 125.00-144.00; high dressing 136.50-149.00; low dressing 116.00-126.00. Lean (85-90%) 116.00-127.00.

BRED COWS: Scarce

BRED HEIFER: Scarce

SOUTHEAST MISSOURI WEEKLY SUMMARY

(Jackson and Farmington) (w/e 8/30/24)

Receipts: 521 Week ago: 1,473 Year ago: 1,123
 Compared to last week, steers steady to 2.00 higher, heifers 4.00 lower to 3.00 higher on a light test. Slaughter cows and bulls steady.

FEEDER STEERS:
 Medium and Large 1

300-400 lbs. 290.00-335.00
 450-500 lbs. 290.00-313.00
 500-600 lbs. 258.00-297.00
 600-650 lbs. 250.00-275.00
 700-750 lbs. 233.00-240.00

FEEDER HEIFERS:
 Medium and Large 1

400-500 lbs. 256.00-282.00
 500-600 lbs. 238.00-267.00
 600-700 lbs. 230.00-250.00
 700-800 lbs. 212.00-239.00
 800-900 lbs. 220.00-230.00

SLAUGHTER BULLS: Yield
 Grade 1-2 1125-2145 lbs 140.00-149.00, high dressing 156.00-172.00

SLAUGHTER COWS: Breaking and Boning (75-85% lean) 123.00-136.00; high dressing 133.00-153.00. Lean (85-90% lean) 97.00-110.00

BRED COWS: Medium and Large 2 2-8 yrs 1070-1280 lbs 2nd/3rd stage 1350.00-1625.00 per head

COW & CALF PAIRS: Scarce

EAST CENTRAL MISSOURI WEEKLY SUMMARY

(Cuba, Vienna) (w/e 8/23/24)

Receipts: 466 Week ago: 2,125 Year ago: 1,274
 No price trend established on feeders. Slaughter cows 1.00 to 2.00 lower.

FEEDER STEERS:
 Medium and Large 1

400-500 lbs. 300.00-325.00
 500-600 lbs. 274.00-306.00
 600-700 lbs. 260.00-278.00

FEEDER HEIFERS:
 Medium and Large 1

400-450 lbs. 275.00-302.00
 500-600 lbs. 259.00-272.50
 Pkg 655 lbs. 240.00
 800-900 lbs. 200.00-207.50

SLAUGHTER BULLS: Yield
 Grade 1-2 1365-2005 lbs 156.00-165.00

SLAUGHTER COWS: Breaking and Boning, (70-85% lean) 136.00-146.00; high dressing 147.00-149.00. Lean (85-90%) 129.00-136.50

BRED COWS: Scarce

COW & CALF PAIRS: Scarce

NORTHWEST MISSOURI WEEKLY SUMMARY

(Tina) (w/e 8/30/24)

Receipts: 395 Week Ago: 1,058 Year Ago: 951
 Compared to last week, steers and heifers steady on a light test. Slaughter cows and bulls steady.

FEEDER STEERS:
 Medium and Large 1

300-400 lbs. 355.00-370.00
 400-450 lbs. 330.00-335.00
 500-600 lbs. 296.00-327.50
 600-650 lbs. 289.00-306.00
 700-750 lbs. 255.50-258.00

FEEDER HEIFERS:
 Medium and Large 1

Pkg 380 lbs. 320.00
 Pkg 450 lbs. 314.00
 500-550 lbs. 286.00-300.00
 600-700 lbs. 256.00-260.00

SLAUGHTER BULLS: Yield
 Grade 1-2 1680-2125 lbs 165.00-179.00

SLAUGHTER COWS: Breaking and Boning, (70-85% lean) 136.00-146.00. Lean (85-90%) 115.00-133.00

BRED COWS: Scarce

COW/CALF PAIRS: Scarce

AFTERNOON NATIONAL SLAUGHTER CATTLE REVIEW

Thus far for Friday in the Southern Plains negotiated cash has been mostly inactive on light demand. The most recent market in the Southern Plains was Thursday with live FOB purchases at 181.00. In Nebraska and the Western Cornbelt negotiated cash trade has been slow on light demand. Compared to Thursday in Nebraska live FOB purchases traded 1.00 lower at 180.00. On Thursday was the most recent dressed delivered purchases at 288.00. Compared to Thursday in the Western Cornbelt live FOB purchases mostly steady from 180.00-183.00. The most recent dressed delivered purchases were Thursday from 286.00-288.00.

Negotiated Cash Sales:

Confirmed:	9,335	Week Ago:	6,010	Year Ago:	25,150
Week to date:	58,501	Week Ago:	62,441	Year Ago:	43,359

<u>Live Basis</u>	<u>Steers</u>	<u>Heifers</u>
Over 80% Choice	180.00-183.00, avg 180.81	180.00-182.00, avg 180.51
65-80% Choice	180.00-181.00, avg 180.58	180.00-181.00, avg 180.16
35-65% Choice	181.00	-
0-35% Choice	-	-
Total All Grades	180.00-183.00, avg 180.80	180.00-182.00, avg 180.48
<u>Dressed Basis</u>		
Over 80% Choice	288.00-289.00, avg 288.10	288.00
65-80% Choice	288.00	-
35-65% Choice	-	-
0-35% Choice	-	-
Total All Grades	288.00-289.00, avg 288.07	288.00

<u>All Beef Type Steers/Heifers</u>	<u>Head</u>	<u>Avg Wt</u>	<u>Price Range</u>	<u>Wtd Avg</u>
Live FOB	7,106	1,431.5	180.00-187.00	180.81
Live Del	500	1,470.6	180.00-185.00	183.88
Dressed Del	1,676	917.6	288.00-289.00	288.04
Dressed FOB	-	-	-	-

WEEKLY COMMODITY FUTURES TRENDS

Compared to last week, Live Cattle 2.85 to 3.43 lower, Lean Hogs uneven 0.47 to 2.27 lower except Apr and May 0.12 to 0.38 higher; Feeder Cattle 6.17 to 8.03 lower.

Daily Futures Closes

	Mon.	Tues.	Wed.	Thu.	Fri.
Cattle					
Oct	Holiday	179.27	179.22	177.25	175.17
Dec		178.85	178.90	176.72	174.70
Feb		179.57	179.50	177.32	175.40
Apr		181.07	180.80	178.85	177.12
Jun		175.15	175.07	173.32	171.60
Lean Hogs					
Oct	Holiday	82.52	81.57	80.70	79.50
Dec		73.80	72.70	72.05	71.22
Feb		76.32	75.77	75.25	74.90
Apr		80.65	80.67	80.15	80.00
May		84.70	84.65	84.17	84.22
Fdr Cat					
Sep	Holiday	241.37	239.62	237.12	234.30
Oct		239.32	237.45	234.57	230.95
Nov		236.62	235.17	231.67	228.02
Jan		233.12	231.77	228.30	224.60
Mar		232.97	231.65	228.17	224.47
Milk					
Sep	Holiday	20.62	20.62	22.61	22.78
Oct		22.57	22.63	22.86	22.84
Nov		23.25	23.00	22.48	22.29

WEEKLY COMMODITY GRAIN FUTURES TRENDS

Compared to last week, Soybeans 0.05 to 0.07 higher, Wheat 0.14 to 0.21 higher, Corn 0.05 to 0.08 higher, KC Wheat 0.12 to 0.17 higher, Soybean Meal 6.80 to 12.10 higher.

Daily Grain Futures Closes

	Mon.	Tues.	Wed.	Thu.	Fri.
Soybeans					
Sep	Holiday	997	1006	1008 1/4	989 1/4
Nov		1012	1021 1/2	1023 1/2	1005
Jan		1029 1/2	1039 1/4	1041 1/2	1022 1/2
Mar		1044	1053 3/4	1055 1/2	1036 1/2
May		1057	1066 1/4	1068	1050
Wheat					
Sep	Holiday	552	565 1/4	561	553 1/4
Dec		566 3/4	580 3/4	574 3/4	567
Mar		586 1/4	600 3/4	595	586 1/2
May		597 1/4	612	606 3/4	598
Jul		603 1/2	617 3/4	612 1/4	603
Corn					
Sep	Holiday	386 1/2	390 1/2	390	383 3/4
Dec		409 1/4	412 3/4	410 3/4	406 1/4
Mar		427 1/4	431	429 1/4	424 1/2
May		437	441	439 3/4	435 1/4
Jul		442 3/4	447 1/4	446 1/4	442 1/4
KC Wheat					
Sep	Holiday	566 1/2	585 1/4	581	569 3/4
Dec		576 1/4	593	588 3/4	577 1/2
Mar		589 3/4	606 1/2	602 1/4	590 3/4
May		596 3/4	613 1/4	609 1/4	598
Jul		600 1/2	616	612 1/2	601 1/4
SB Meal					
Sep	Holiday	319.70	323.80	320.70	318.40
Oct		317.40	325.80	322.40	320.80
Dec		320.80	329.30	326.50	324.40
Jan		322.20	330.70	328.20	325.70
Mar		324.40	332.60	330.60	327.90

MISSOURI GRAIN WEEKLY TRENDS

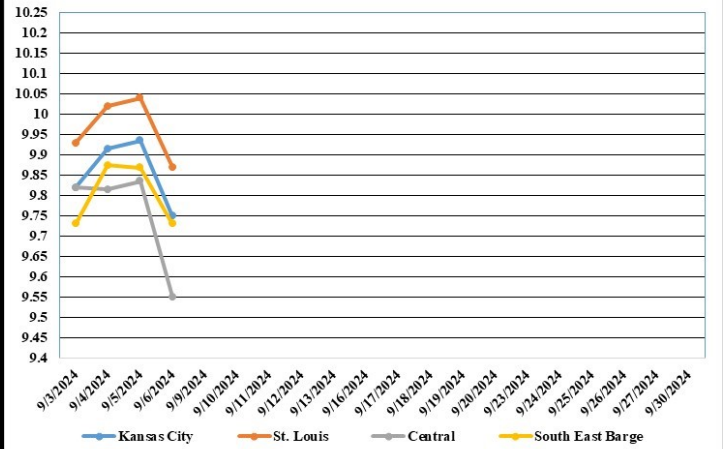
Compared to last week, Soybeans 0.05 lower to 0.15 higher, Wheat 0.10 to 0.35 higher, Corn 0.05 to 0.13 higher, Sorghum 0.03 higher.

Area	#1 Soybeans	#2 Soft Wheat	#2 Corn	#2 Grain Sorghum
Kansas City				
Friday**	9.40-10.00	5.03	3.58-3.81	3.88
Monday	Holiday			
Tuesday	9.52-10.22	5.17	3.64-3.89	3.94
Wednesday	9.62-10.32	5.31	3.68-3.93	3.98
Thursday	9.64-10.43	5.25	3.66-3.86	3.96
Friday	9.45-10.15	5.17	3.61-3.76	3.91
St. Louis				
Friday**	9.77-9.82	4.52-4.82	3.86-3.89	4.51
Monday	Holiday			
Tuesday	9.93	4.67-5.02	3.97-3.98	---
Wednesday	10.02-10.03	4.81-5.16	4.02-4.05	---
Thursday	10.04-10.05	4.75-5.00	4.00-4.03	---
Friday	9.87	4.67-4.92	3.99-4.00	---
Central				
Friday**	9.60-9.85	5.02-5.03	3.61-3.68	---
Monday	Holiday			
Tuesday	9.82	5.17	3.74-3.79	---
Wednesday	9.72-9.92	5.31	3.78-3.83	---
Thursday	9.74-9.94	5.25	3.76-3.81	---
Friday	9.55	5.17	3.71-3.76	---
S.E. MO				
Friday**	9.65	---	3.63-3.76	---
Monday	Holiday			
Tuesday	9.70-9.77	---	3.76-3.81	---
Wednesday	9.84-9.90	---	3.80-3.93	---
Thursday	9.84-9.89	---	3.81-3.91	---
Friday	9.73	---	3.81-3.86	---

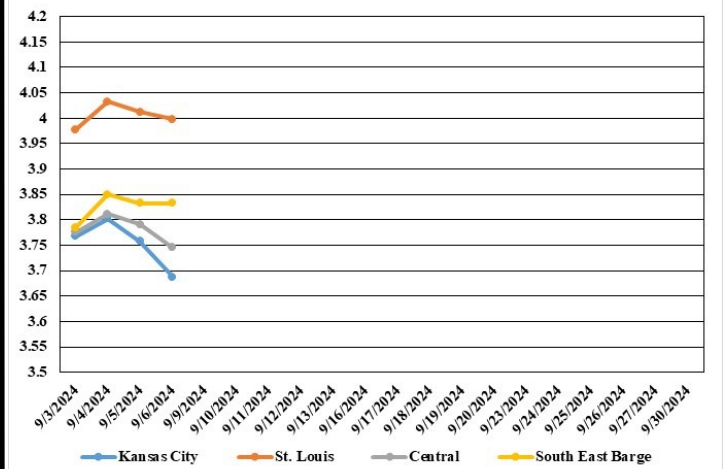
(PRICES PER BUSHEL) *NEW CROP **PREVIOUS WEEK'S PRICES
*Bids calculated using Kansas City, St. Louis, and St. Joseph bids

MONTHLY GRAIN CROP

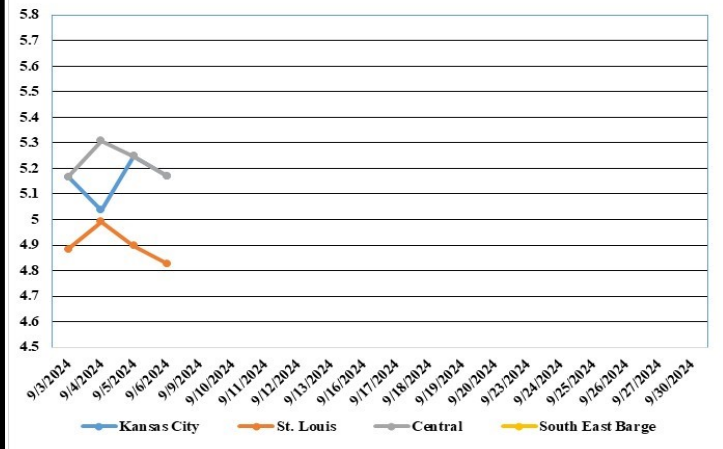
September 2024 Soybean Bids



September 2024 Corn Bids



September 2024 Wheat Bids



Only dates in which markets are trading and only current cash bids are represented.

*Axis value ranges may be updated to reflect data points.

**WHOLESALE FEEDSTUFFS PRICES
(DOLLARS PER TON-BULK BASIS)**

Area	Soybean Hulls Pellets	Soybean Meal 46.5-48%	Corn Gluten Pellets 21%	Wheat Middlings
Kansas City	155.00	349.90	175.00	110.00
St. Louis	n/a	n/a	169.00	107.50

MISSOURI CROP PROGRESS AND CONDITION

There were 6.1 days suitable for fieldwork in the week ending September 1, 2024. Statewide, the average temperature was 80.0 degrees, 4.7 degrees above normal. Precipitation averaged 0.60 inches, 0.29 inches below normal. Topsoil moisture supply was rated 3 percent very short, 26 percent short, 70 percent adequate, and 1 percent surplus. Subsoil moisture supply was rated 2 percent very short, 17 percent short, 76 percent adequate, and 5 percent surplus. Corn dented reached 85 percent, compared to the 5-year average of 78 percent. Corn mature reached 39 percent, compared to the 5-year average of 18 percent. Corn harvested for grain reached 5 percent, compared to the 5-year average of 1 percent. Corn condition was rated 3 percent very poor, 4 percent poor, 14 percent fair, 59 percent good, and 20 percent excellent. Soybeans blooming reached 95 percent, equal to the 5-year average. Soybeans setting pods reached 84 percent, equal to the 5-year average. Soybeans dropping leaves reached 13 percent, compared to the 5-year average of 2 percent. Soybean condition was rated 3 percent very poor, 5 percent poor, 18 percent fair, 61 percent good, and 13 percent excellent. Cotton setting bolls reached 95 percent, compared to the 5-year average of 94 percent. Cotton bolls opening reached 14 percent, compared to the 5-year average of 12 percent. Cotton condition was rated 4 percent very poor, 9 percent poor, 28 percent fair, and 59 percent good. Rice harvested reached 15 percent, compared to the 5-year average of 2 percent. Rice condition was rated 3 percent very poor, 9 percent poor, 19 percent fair, 66 percent good, and 3 percent excellent.

	Week Ending			5 yr avg.
	9/1/24	8/25/24	9/1/23	
Corn Dented	85	75	84	78
Corn Mature	39	17	27	18
Corn Harvested	5	2	1	1
Soybeans Blooming	95	92	98	95
Soybeans Setting Pods	84	79	93	84
Soybeans Dropping leaves	13	5	6	2
Cotton Setting Bolls	95	90	96	94
Cotton bolls opening	14	5	13	12
Rice harvested	15	7	4	2
Alfalfa hay 3rd cutting	85	77	85	83

MISSOURI WEEKLY HAY SUMMARY

A cooler week swept across the state, a welcomed break from the heat wave we've had the last couple of weeks. Hay movement remains to be sluggish as supplies are moderate to heavy. Producers continue to add to supplies with late season cuttings. Hay stocks are in a much better position than where we were a year ago. Current supply of hay and other roughages were categorized: 18 percent surplus, 77 percent adequate, and 5 percent short, as of Monday's Crop Progress Report. Last year at this time they were categorized: 34 percent adequate, 37 percent short, and 39 percent very short. Some combines are rolling as corn moistures in some areas are getting to the low 20s and some in the upper teens. This week's drought monitor showed a slight increase to the drought footprint for Missouri with 55.69 percent included. Hay prices are steady to weak, demand is light. The Missouri Department of Agriculture has a hay directory at <https://apps.mda.mo.gov/haydirectory> or visit the University of Missouri Extension feed stuff finder at <https://feedstufffinder.org>

- Alfalfa - Supreme 250.00-300.00, small square 8.00-12.00 per bale
- Alfalfa - Premium 200.00-250.00
- Alfalfa - Good 150.00-200.00, small square 5.00-10.00 per bale
- Alfalfa - Fair 125.00-150.00
- Mixed grass - Good/Premium 150.00-200.00
- Mixed grass-Fair/Good 100.00-150.00, small square 3.50-8.00 per bale
- Mixed grass - Fair 40.00-65.00 per large round bale
- Wheat straw - 4.00-7.00 per small square bale

Please Note: The above volumes (tonnage, acres, and bales) listed are for confirmed trades only, it does not include estimated volume (tonnage) for bids or offers to the trade. List your hay for sale at: [Hay Listing Online Form](#). Explanation of Hay Quality Guidelines: [Hay Quality Designation Guidelines](#). Glossary of Terms: [Livestock, Poultry, & Grain Hay Terms](#)

MISSOURI WEEKLY SHEEP/GOAT AUCTION SUMMARY

Receipts: 1,640 Week Ago: 764 Last Year: 3,044
SHEEP: Feeder Lambs: Small and Medium 1-2 30-40 lbs 252.50-287.50; 40-50 lbs 240.00-290.00, thin 210.00; pkg 50 lbs 250.00, thin 200.00.
 Slaughter lambs Choice and Prime 1-3 w/s pkg 92 lbs 165.00. Good 1-2 w/s pkg 93 lbs 115.00. Choice and Prime 1-3 hair 50-70 lbs 240.00-267.50; 70-80 lbs 229.00-252.50; 80-105 lbs 210.00-228.00; pkg 112 lbs 200.00. Choice 1-3 hair 50-80 lbs 210.00-242.50. Good 1-2 hair pkg 67 lbs 195.00; pkg 83 lbs 150.00. Slaughter ewes hair Good 2-3 100-115 lbs 122.50-125.00. Utility and Good 1-3 90-100 lbs 100.00-110.00; 100-150 lbs 97.50-117.50. Slaughter bucks 1-2 hair 125-170 lbs 95.00-147.50.
 Replacement ewes Small and Medium 1-2 2-4 yrs 79 lbs exp 165.00; 90-100 lbs exp 127.50-142.50; 100-110 lbs exp 140.00-150.00; 4-6 yrs 90-125 lbs exp 117.50-132.50.
GOATS: Feeder kids Selection 1 25-40 lbs 287.50-305.00, replacements 372.50; 40-50 lbs 277.50-320.00, replacement 430.00. Selection 2 30-50 lbs 225.00-260.00. Selection 3 30-40 lbs 120.00-188.00, pygmies 125.00-150.00; pkg 49 lbs 167.50; pkg 47 lbs pygmies 118.00. Wether kids Selection 2 pkg 45 lbs 240.00.
 Slaughter kids Selection 1 50-60 lbs 270.00-280.00. Selection 2 50-60 lbs 210.00-265.00, pygmies 252.50; 60-90 lbs 245.00-270.00; pkg 90 lbs 227.50.
 Slaughter nannies/does Selection 1-2 70-80 lbs 127.50-149.00, pygmies 122.50; 88 lbs 132.50-135.00; 90-150 lbs 105.00-145.00.
 Slaughter bucks/billies Selection 1-2 pkg 80 lbs 177.50.
 Wethers Selection 1-2 50-115 lbs 170.00-187.50.
 Wether kids Selection 2 pkg 62 lbs 270.00.
 Replacement nannies/does Selection 1-2 2-4 yrs 85-165 lbs exp 150.00-165.00; 4-6 yrs 120 lbs exp 155.00.

Explanatory Notes: Stage - Represents estimated lambing/kidding period (Open, Exp=exposed, Bred, Fall = Sep-Nov, Win = Dec-Feb, Spr = Mar-May, Sum=Jun-Aug; w/s = woolled and shorn; /hd= per head; /fam=per family
 All price CWT unless otherwise noted.

MISSOURI DROUGHT MONITOR

Date	None	D0	D1	D2	D3	D4
9/3/24	44.31	40.89	14.80	0	0	0
8/27/24	48.30	41.80	9.90	0	0	0
9/5/23	22.12	27.05	27.73	16.74	8.53	0

Reflects percentage of Missouri impacted by drought. D0 Abnormally Dry; D1 Moderate Drought; D2 Severe Drought; D3 Extreme Drought; D4 Exceptional Drought

NATIONAL DIRECT DELIVERED FEEDER PIG REPORT

09/06/24 Receipts: 112,865 Week ago: 129,207 Year Ago: 128,299
 Early weaned pigs and feeder pigs 1.00 higher.
 Cash 90,647 head 25.00-37.00, weighted average 32.92
 Formula 11,168 head 33.07-55.13, weighted average 40.47
 Feeder pigs 40 pounds basis:
 Cash 11,050 head 49.00-59.00, weighted average 54.86

NATIONAL DAILY DIRECT PRIOR DAY HOG REPORTS FOR 09/06/24

BARROWS AND GILTS (Carcass Basis): 1,710 head
 Base Carcass Price 75.00-78.50, weighted average 76.58

SOWS (Live Basis): 7,088 head
 300-500 lbs. 28.00-81.50
 Over 500 lbs. 60.32-84.11

MISSOURI WEEKLY DIRECT SLAUGHTER CATTLE REPORT 09/06/24

Weekly Receipts: 400 Week ago: 280 Year ago: 320
 Trading as of Friday morning, flat dressed sales 2.00 to 4.00 lower and grid dressed sales 1.00 lower than last week's bid.

LIVE STEERS & HEIFERS: No sales reported
DRESSED STEERS & HEIFERS: 5 loads flat Thu 288.00

GRADE AND WEIGHT (Grid): 5 loads Thu 292.00

Click here for the current [National Crop Progress](#)
 Click here for the current [Missouri Crop Progress](#)
 The current hay directory can be found at: [Hay Directory](#).