

Weekly Market Summary

Published by:
Missouri Department of Agriculture
Ag Business Development Division
Market News Program



Chris Chinn, Director
 Jill Wood, Division Director
 Tony Hancock, Editor
[agmarketnews.mo.gov](http://www.ams.usda.gov/marketnews.htm)
<http://www.ams.usda.gov/marketnews.htm>

Michael L. Parson, Governor

Volume XLIV, Number 38 ♦ P.O. Box 630, Jefferson City, MO 65102 ♦ (573) 751-4211 ♦ Mon, Sep 23, 2024

MISSOURI WEEKLY FEEDER CATTLE WEIGHTED AVERAGE REPORT

Feeder Cattle Receipts: 21,711 Week ago: 34,169 Year ago: 23,428
 Steers and Heifers Medium and Large 1—Weighted average weights and prices

STEERS: Medium and Large 1

286 lbs. 296.91	478 lbs. 295.38	680 lbs. 264.52	878 lbs. 236.90
325 lbs. 301.39	519 lbs. 282.28	717 lbs. 255.56	917 lbs. 233.56
377 lbs. 313.94	569 lbs. 279.40	777 lbs. 248.62	967 lbs. 225.42
424 lbs. 304.87	620 lbs. 270.82	820 lbs. 243.17	1031 lbs. 214.20

HEIFERS: Medium and Large 1

269 lbs. 287.47	466 lbs. 274.79	677 lbs. 241.48	865 lbs. 215.77
325 lbs. 285.34	526 lbs. 263.32	724 lbs. 240.42	927 lbs. 189.64
381 lbs. 286.59	571 lbs. 252.48	764 lbs. 231.40	
424 lbs. 271.61	628 lbs. 250.29	817 lbs. 222.18	

MISSOURI STEER (HEIFER) STOCKER FORMULA 09/23/2024

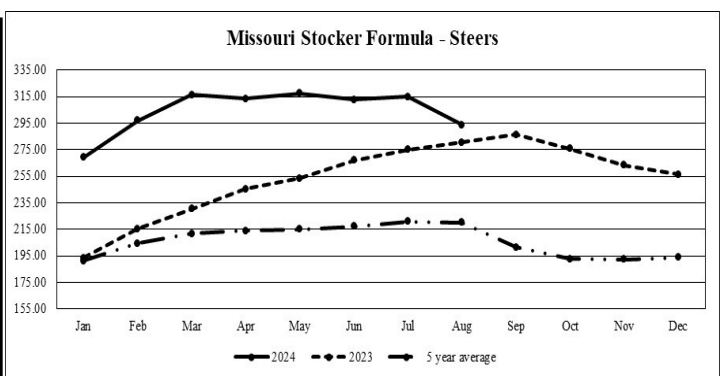
Monday's Missouri Stocker formula consists of **3389 (3481)** head with a weighted average weight of **549.52 (541.23)** lbs. and a price value of **273.33 (251.20)**, 2.63 lower (1.15 lower) than last week.

This a rolling seven day calculated weighted value which combines all Feeder Steers reported by MDA/USDA Market News Service weighing from 400-649 lbs. in the Medium and Large 1 and Medium and Large 1-2 frame and muscle classifications, including all comment cattle except Brahman X. Heifer values are in parentheses.

MISSOURI WEEKLY CATTLE AUCTION SUMMARY

Total Receipts: 26,204 Week Ago: 37,869 Year Ago: 28,879

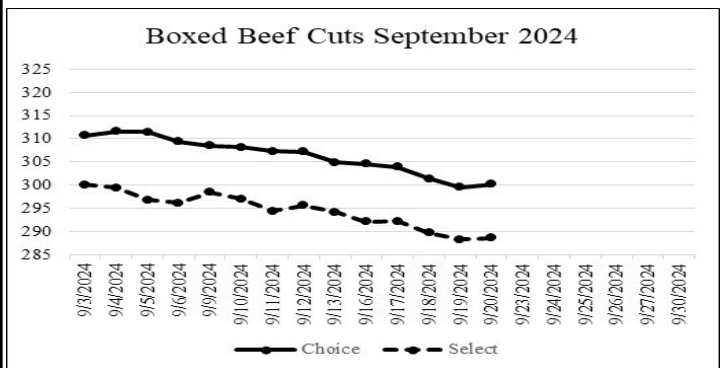
Compared to last week, yearling steers and heifers sold steady to 5.00 higher, calves were very uneven but generally from 5.00 lower to 5.00 higher. With the official arrival of Fall temperature swings are once again making calves with no vaccination or weaning programs a high-risk venture and these calves are seeing increasing discounts each day, while those that have received more attention and work generally sold higher this past week. The supply was moderate several load lots of yearlings at various sales around the state. Lighter calves were mostly in small drafts and odds and ends with very few drafts of any size making buyers work to put loads together. Demand for yearlings was good. Lighter weight calves found demand that was directly proportional to the anticipated health risk associated with each offering. Some much needed moisture fell for nearly all the state over the weekend with more in the forecast this week providing some hope for improved pastures before frost arrives. The monthly cattle on feed report was released on Friday and was about as natural as a report can be. Actual numbers fell right in line with pre-report expectations. A few stick-out sales this week included a load of 602 lb. steers at Callaway Livestock Center that sold for 293.25, another load of 703 lb. steers sold at 271.50. New Cambria Livestock Auction sold a load of 816 lb. steers at 251.75. Kingsville Livestock Auction sold four loads of steers from 860-890 lbs. which sold from 240.00-241.85. Joplin Regional Stockyards sold 162 head of 913 lb. steers for 235.00. Lolli Brothers Livestock Market sold at load of 637 lb. heifers for 270.00 as well as a load of 839 lb. heifers for 222.10. Boxed beef cutouts were lower for the week, choice closed on Friday at 304.91, down 4.50 and select closed at 294.17, down 1.95 compared to last week. Negotiated feedlot sales as of the Friday afternoon report totaled about 46K head. Live sales were reported from 182.00-185.50 and dressed sales from 289.00-292.50.00. The Missouri Stocker formula consists of 3389 head with a weighted average weight of 549.52 lbs. and a price value of 273.33, 2.63 lower than a week ago. The steer/heifer spread is 22.13 per cwt.



*Graph is updated the first Monday of each month. Axis value ranges may be updated to reflect data points.

NATIONAL BOXED BEEF CUTOUT/BOXED BEEF CUTS

DATE	CHOICE	SELECT	TOTAL LOADS
9/16	304.57	292.14	134
9/17	303.91	292.22	156
9/18	301.38	289.75	176
9/19	299.56	288.26	170
9/20	300.19	288.59	130
5 Day Simple Average	301.26	289.71	



*Axis value ranges may be updated to reflect data points.

WEEKLY LIVESTOCK SLAUGHTER 09/21/24

	CATTLE	HOGS	SHEEP
Week to Date:	610,000	2,506,000	35,000
Last Week:	620,000	2,565,000	34,000
Last Year:	626,639	2,546,648	35,034

SOUTHWEST MISSOURI WEEKLY SUMMARY

(Joplin and Springfield)

Receipts: 10,309 Week ago: 16,968 Year Ago: 10,420
Compared to last week, early week steers under 650 lbs steady to 8.00 lower, over 650 lbs and all heifers steady to 5.00 higher; late week steers mostly steady to 3.00 higher, heifers steady to 5.00 lower. Slaughter cows 3.00 to 8.00 lower. Slaughter bulls 4.00 to 9.00 lower.

FEEDER STEERS:
Medium and Large 1

300-400 lbs. 300.00-335.00
400-500 lbs. 275.00-327.00
500-600 lbs. 267.00-295.00
600-700 lbs. 250.00-279.00
700-800 lbs. 234.00-264.00
800-900 lbs. 227.00-249.00
900-1000 lbs. 221.25-242.00

FEEDER HEIFERS:
Medium and Large 1

300-400 lbs. 272.00-302.00
400-500 lbs. 265.00-299.00
500-600 lbs. 235.00-287.00
600-700 lbs. 230.00-259.00
700-800 lbs. 226.00-236.00
800-900 lbs. 209.00-225.75

FEEDER HOLSTEIN STEERS
Large 3

Scarce Scarce

SLAUGHTER COWS: Breaking and Boning (70-85% lean) 117.00-136.00; high dressing 129.00-149.00; low dressing 107.00-120.00. Lean (85-90%) 107.00-121.00

SLAUGHTER BULLS: Yield Grade 1-2 1250-2375 lbs. 148.00-172.00; high dressing 162.00-183.00; low dressing 121.00-152.00.

BRED COWS: Medium and Large 1 2-8 yrs 1120-1550 lbs 2nd/3rd stage 2000.00-2950.00, 1st stage 1800.00-2150.00; >8 yrs 1135-1327 lbs 1st to 3rd stage 2050.00-2450.00. Medium and Large 1-2 2-4 yrs 1040 lbs 2nd/3rd stage 2000.00-2200.00; 2-8 yrs 775-1580 lbs 1st to 3rd stage 1325.00-2300.00 per head

BRED HEIFERS: Medium and Large 1 <2 yrs 826-1068 lbs 1st/2nd stage 1875.00-2300.00; 2-4 yrs 975-1400 lbs 1st to 3rd stage 2100.00-2600.00 per head

COW & CALF PAIRS: Medium and Large 1 2-8 yrs 1193-1900 lbs with baby to >300 lb calves 2600.00-3000.00; 2-8 yrs 1365-1555 lbs rebred 1st/2nd stage with >300 lb calves 2650.00-3000.00. Medium and Large 1-2 2-8 yrs 1032-1480 lbs with baby to >300 lb calves 1900.00-2600.00; >8 yrs 1040-1535 lbs with 150 to >300 lb calves 1800.00-2350.00; >8 yrs 1355-1790 lbs rebred 1st stage with 150 to >300 lb calves 2350.00-2550.00 per pair

SOUTH CENTRAL MISSOURI WEEKLY SUMMARY

(West Plains, Phillipsburg)

Receipts: 3,195 Week ago: 3,832 Year Ago: 5,347
Compared to last week, steers steady to 5.00 higher, up to 10.00 higher late week and heifers 3.00 to 10.00 higher, except calves early week uneven from 3.00 lower to 3.00 higher. Slaughter cows and bulls 4.00 to 8.00 lower.

FEEDER STEERS:
Medium and Large 1

350-400 lbs. 305.00-341.00
400-500 lbs. 282.00-323.00
500-600 lbs. 264.00-297.50
600-700 lbs. 249.00-266.00
700-800 lbs. 240.75-256.50
800-900 lbs. 225.50-240.75

FEEDER HEIFERS:
Medium and Large 1

400-500 lbs. 270.00-299.00
500-600 lbs. 246.00-276.00
600-700 lbs. 231.50-249.00
700-800 lbs. 223.00-235.00
800-900 lbs. 205.50-221.00

FEEDER HOLSTEIN STEERS:
Large 3

Pkg 741 lbs. 158.00

SLAUGHTER COWS: Breaking and Boning (70-85% lean) 114.00-129.00, high dressing 125.00-139.00; low dressing 101.00-119.00. Lean (85-90%) 95.00-120.00

SLAUGHTER BULLS: Yield Grade 1-2 1125-2110 lbs. 145.00-164.00; high dressing 165.00-180.00; low dressing 115.00-144.00

BRED COWS: Medium and Large 1-2 2-8 yrs 912-1720 lbs 2nd/3rd stage 1400.00-2450.00, 1st stage 1750.00; >8 yrs 1155-1325 lbs 2nd/3rd stage 1350.00-1750.00 per head

BRED HEIFERS: Medium and Large 1-2 <2 yrs 742-1008 lbs 1st to 3rd stage 1300.00-1750.00 per head

COW & CALF PAIRS: Medium and Large 1-2 2-8 yrs 1250 lbs rebred 1st stage with 150-300 lb calves 2450.00 per pair

WEST CENTRAL MISSOURI WEEKLY SUMMARY

(Kingsville, Windsor, Butler)

Receipts: 3,700 Week ago: 5,085 Year ago: 4,408
Compared to last week, steers and heifers unevenly steady. Slaughter cows uneven, but mostly 3.00 to 8.00 lower, spots steady.

FEEDER STEERS:
Medium and Large 1

400-500 lbs. 290.00-336.00
500-600 lbs. 267.50-312.50
600-700 lbs. 251.50-279.00
700-800 lbs. 240.00-269.50
800-900 lbs. 238.00-246.35
22 hd 914 lbs. 234.50

FEEDER HEIFERS:
Medium and Large 1

400-500 lbs. 276.00-296.00
500-600 lbs. 250.00-281.00
600-700 lbs. 243.00-264.50
700-800 lbs. 212.00-244.75
26 hd 864 lbs. 213.75

SLAUGHTER BULLS: Yield Grade 1-2 1270-2200 lbs 149.00-166.00; high dressing 163.00-179.00; low dressing 128.00-147.00

SLAUGHTER COWS: Breaking and Boning (70-85% lean) 110.00-134.00, high dressing 126.00-142.00; low dressing 100.00-122.00. Lean (85-90%) 100.00-119.00

BRED COWS: Medium and Large 1-2 5-8 yrs 995-1470 lbs 2nd/3rd stage 1725.00-2675.00 per head

COW & CALF PAIRS: Medium and Large 1-2 5-8 yrs 1225-1350 lbs with 150-300 lb calves 2550.00-2925.00 per pair

NORTHEAST MISSOURI WEEKLY SUMMARY

(Bowling Green, Kingdom City, Palmyra)

Receipts: 2,925 Week ago: 5,516 Year ago: 3,190
Compared to last week, steers under 700 lbs and heifers under 600 lbs steady to firm on a light test, yearling steers 4.00 to 7.00 higher and yearling heifers steady to firm. Slaughter cows steady to 7.00 lower.

FEEDER STEERS:
Medium and Large 1

450-500 lbs. 319.00-326.00
500-600 lbs. 287.00-307.50
600-700 lbs. 270.00-301.00
700-800 lbs. 249.50-271.50
850-900 lbs. 241.60-243.75
900-1000 lbs. 231.10-235.75

FEEDER HEIFERS:
Medium and Large 1

400-450 lbs. 289.00-291.00
500-600 lbs. 256.00-283.00
600-700 lbs. 247.00-263.00
700-750 lbs. 240.00-248.00
Pkg 827 lbs. 222.50

SLAUGHTER BULLS: Yield Grade 1-2 1335-2040 lbs 155.00-166.00; low dressing 139.00-155.00

SLAUGHTER COWS: Breaking and Boning (70-85% lean) 120.00-137.00; high dressing 129.00-144.00; low dressing 114.00-128.00. Lean (85-90%) 115.00-126.00

SLAUGHTER STEERS: Choice and Prime 2-4 186.00. Choice 2-3 180.00-184.50. Select and Choice 2-3 179.00-180.00. Select 1-2 173.50-175.00.

SLAUGHTER HEIFERS: Choice 2-3 181.00-185.00. Select and Choice 1-3 178.00. Select and Choice 2-3 178.00-180.00.

BRED COWS: Medium and Large 1-2 2-8 yrs 973-1622 lbs 2nd/3rd stage 2075.00-2975.00; >5 yrs 1170-1392 lbs 2nd stage 1700.00-1925.00 per head

COW/CALF PAIRS: Medium and Large 1-2 2-4 yrs 900-1200 lbs with baby to >300 lb calves 3025.00-3510.00 per pair

NORTH CENTRAL MISSOURI WEEKLY SUMMARY

(Macon, Unionville, Green City, New Cambria)

Receipts: 1,649 Week ago: 444 Year ago: 1,120
Compared to two weeks ago, steers and heifers steady to 5.00 lower, spots 10.00 lower late week. Slaughter cows 2.00 to 4.00 lower.
*Some sale barns on a bi-weekly schedule and may not have a sale each week.

FEEDER STEERS:
Medium and Large 1

400-500 lbs. 305.00-338.00
500-600 lbs. 290.25-313.00
600-700 lbs. 266.25-289.00
700-800 lbs. 250.00-264.00
800-850 lbs. 248.25-251.75

FEEDER HEIFERS:
Medium and Large 1

400-500 lbs. 279.50-300.00
500-600 lbs. 265.00-297.00
600-700 lbs. 247.50-270.00
700-800 lbs. 235.00-252.50
62 hd 839 lbs. 222.10

SLAUGHTER BULLS: Yield Grade 1-2 1200-2205 lbs ind 161.00; low dressing 136.00-152.00

SLAUGHTER COWS: Breaking and Boning (70-85% lean) 121.00-135.00; high dressing 137.00-139.00; Lean (85-90%) 112.00-129.00

BRED COWS: Scarce

BRED HEIFER: Scarce

SOUTHEAST MISSOURI WEEKLY SUMMARY

(Jackson and Farmington)

Receipts: 2,222 Week ago: 1,825 Year ago: 1,757
 Compared to last week, steers and heifers uneven from 6.00 lower to 12.00 higher. Slaughter cows 3.00 to 6.00 lower. Slaughter bulls 3.00 to 4.00 lower.

FEEDER STEERS:
 Medium and Large 1

300-400 lbs. 274.00-317.00
 400-500 lbs. 265.00-294.00
 500-600 lbs. 245.00-285.00
 600-700 lbs. 230.00-266.00
 700-800 lbs. 225.00-256.00
 800-900 lbs. 220.00-237.00

FEEDER HEIFERS:
 Medium and Large 1

300-400 lbs. 240.00-275.00
 400-500 lbs. 230.00-280.00
 500-600 lbs. 220.00-260.00
 600-700 lbs. 224.00-247.00
 700-800 lbs. 210.00-227.00
 800-850 lbs. 200.00-214.00

SLAUGHTER BULLS: Yield Grade 1-2 1025-1970 lbs 118.00-145.00, high dressing 142.00-155.00, low dressing ind 113.00

SLAUGHTER COWS: Breaking and Boning (75-85% lean) 100.00-120.00; high dressing 115.00-130.00. Lean (85-90% lean) 85.00-106.00

BRED COWS: Medium and Large 2 2-8 yrs 1060-1250 lbs 1st to 3rd stage 1675.00-1975.00 per head

COW & CALF PAIRS: Medium and Large 2

EAST CENTRAL MISSOURI WEEKLY SUMMARY

(Cuba, Vienna)

Receipts: 1,192 Week Ago: 2,280 Year ago: 1,272
 Compared to last week, steers and heifers steady to 3.00 higher. Slaughter bulls 4.00 to 9.00 lower.

FEEDER STEERS:
 Medium and Large 1

400-450 lbs. 310.00-330.00
 500-600 lbs. 275.00-288.00
 600-700 lbs. 252.50-271.00
 700-750 lbs. 245.00-253.75
 800-900 lbs. 220.00-230.00

FEEDER HEIFERS:
 Medium and Large 1

400-500 lbs. 260.00-288.00
 500-550 lbs. 252.50-257.50
 600-650 lbs. 242.00-246.25
 700-750 lbs. 220.00-237.50

SLAUGHTER BULLS: Yield Grade 1-2 1270-2220 lbs 152.00-175.00; high dressing 162.00-189.00; low dressing 120.00-155.00.

SLAUGHTER COWS: Breaking and Boning, (70-85% lean) 116.00-132.00; high dressing 127.50-135.00; low dressing 105.00-116.00. Lean (85-90%) 105.00-123.00

BRED COWS: Medium and Large 1-2 5-8 yrs 1110-1280 lbs 2nd stage 1775.00-1975.00; >5 yrs 1095-1360 lbs 2nd/3rd stage 1710.00-2125.00 per head

COW & CALF PAIRS: Scarce

NORTHWEST MISSOURI WEEKLY SUMMARY

(Tina)

Receipts: 560 Week Ago: 1,919 Year Ago: 740
 Compared to last week, feeders 3.00 to 5.00 lower, on a light supply. Slaughter cows and bulls mostly 5.00 to 10.00 lower.

FEEDER STEERS:
 Medium and Large 1

15 hd 494 lbs. 294.00
 600-650 lbs. 276.50-282.00
 700-800 lbs. 248.50-257.50

FEEDER HEIFERS:
 Medium and Large 1

400-500 lbs. 280.00-291.00
 Pkg 516 lbs. 269.00
 Pkg 626 lbs. 251.00

SLAUGHTER BULLS: Yield Grade 1-2 1190-2025 lbs 155.00-172.50; couple high dressing 175.50-176.00; low dressing 130.00-150.00.

SLAUGHTER COWS: Breaking and Boning, (70-85% lean) 106.00-127.50; high dressing 127.50-129.50; low dressing 100.00-117.00. Lean (85-90%) 104.00-123.00

BRED COWS: Medium and Large 1-2 1130-1262 lbs 3rd stage 2300.00-3100.00 per head

COW/CALF PAIRS: Scarce

AFTERNOON NATIONAL SLAUGHTER CATTLE REVIEW

Thus far for Friday in the Texas Panhandle negotiated cash trade has been slow on light demand. Compared to last week live FOB purchases traded 2.00 higher at 183.00. In Kansas negotiated cash trade and demand has been moderate. Compared to last week live FOB purchases traded 2.00-3.00 higher at 183.00. In Nebraska negotiated cash trade and demand has been moderate. Compared to last week live FOB purchases traded 2.00-3.00 higher at 184.00. Compared to last week dressed delivered purchases traded 2.00 higher from 290.00-292.00. In the Western Cornbelt negotiated cash trade and demand has been moderate. Compared to last week live FOB purchases traded 1.00 -2.00 higher from 184.00-185.00. Not enough dressed for a market trend. Last week dressed delivered purchases traded from 288.00-294.00.

Negotiated Cash Sales:

Confirmed:	40,103	Week Ago:	21,337	Year Ago:	5,612
Week to date:	46,344	Week Ago:	37,282	Year Ago:	74,588

Live Basis	Steers	Heifers
Over 80% Choice	182.00-185.50, avg 184.07	183.00-185.00, avg 183.60
65-80% Choice	182.00-183.00, avg 182.95	183.00
35-65% Choice	182.00-183.00, avg 182.73	183.00
0-35% Choice	-	-
Total All Grades	182.00-185.50, avg 183.80	183.00-185.00, avg 183.45
Dressed Basis		
Over 80% Choice	289.00-292.50, avg 290.53	290.00-292.00, avg 291.54
65-80% Choice	290.00-292.00, avg 290.74	-
35-65% Choice	-	-
0-35% Choice	-	-
Total All Grades	289.00-292.50, avg 290.54	290.00-292.00, avg 291.54

All Beef Type Steers/Heifers	Head	Avg Wt	Price Range	Wtd Avg
Live FOB	26,780	1,415.0	182.00-189.00	183.77
Live Del	2,157	1,481.3	184.00-188.00	186.85
Dressed Del	10,200	947.9	289.00-292.50	290.85
Dressed FOB	932	996.6	290.00-292.00	291.92

WEEKLY COMMODITY FUTURES TRENDS

Compared to last week, Live Cattle 2.50 to 4.82 higher, Lean Hogs 1.65 to 3.77 higher, Feeder Cattle 2.92 to 6.57 higher.

Daily Futures Closes

	Mon.	Tues.	Wed.	Thu.	Fri.
Cattle					
Oct	177.22	178.80	178.30	179.97	182.47
Dec	178.35	179.85	179.85	181.12	183.20
Feb	179.47	181.00	181.07	182.35	183.77
Apr	181.10	182.37	182.42	183.57	184.47
Jun	175.45	176.57	176.75	177.72	178.32
Lean Hogs					
Oct	79.92	81.77	82.05	82.25	82.22
Dec	72.17	73.70	73.87	74.30	74.22
Feb	75.67	76.80	77.00	77.32	77.55
Apr	80.77	81.57	81.85	82.05	82.32
May	85.00	85.55	85.90	85.80	86.00
Fdr Cat					
Sep	241.30	243.30	242.82	245.27	244.82
Oct	239.00	240.75	239.95	243.77	243.90
Nov	235.57	238.30	238.12	241.35	241.77
Jan	230.67	233.05	233.10	236.12	236.77
Mar	230.05	232.00	232.00	234.57	235.05
Milk					
Sep	23.22	23.27	23.30	23.32	23.33
Oct	23.64	23.90	23.60	23.99	23.91
Nov	23.04	23.21	22.83	23.09	23.03

WEEKLY COMMODITY GRAIN FUTURES TRENDS

Compared to last week, Soybeans 0.04 to 0.06 higher, Wheat 0.24 to 0.26 lower, Corn 0.10 to 0.12 lower, KC Wheat 0.33 to 0.36 lower, Soybean Meal 1.00 to 5.70 lower.

Daily Grain Futures Closes

	Mon.	Tues.	Wed.	Thu.	Fri.
Soybeans					
Nov	1004 1/2	1006	1014	1013 1/4	1012
Jan	1023 1/2	1024 3/4	1032	1031 1/4	1029 1/2
Mar	1038	1039 1/4	1045 3/4	1045 1/4	1043 3/4
May	1052 1/4	1053 3/4	1059 3/4	1059 1/4	1057 3/4
Jul	1063	1064 1/2	1070 1/4	1069 3/4	1068 1/4
Wheat					
Dec	578 1/2	575 3/4	575 3/4	565 1/2	568 1/2
Mar	597 1/2	595 1/2	595 1/4	585	587 1/2
May	608 1/4	606 1/2	606 1/2	596	598 1/4
Jul	613 3/4	612 1/4	612 1/4	602	603 3/4
Sep	624 3/4	623 1/4	623 1/4	613 1/4	615
Corn					
Dec	410 3/4	412 1/2	412 3/4	405 3/4	401 3/4
Mar	429 1/4	430 3/4	430 3/4	424 1/4	420
May	440 1/4	441 1/4	441 1/2	435 1/4	431
Jul	446 1/2	448	447 3/4	442	437 3/4
Sep	442 1/2	444 3/4	444 1/4	439 3/4	436 1/4
KC Wheat					
Dec	580 1/2	580	578 1/2	564 1/2	564
Mar	593 1/2	593	591 3/4	578 1/4	577 1/2
May	601	600 1/2	599 1/2	586 1/4	585 1/2
Jul	605	605	604	591	590 1/4
Sep	614 3/4	614 3/4	614	601 1/2	600 1/2
SB Meal					
Oct	320.10	318.00	317.90	319.90	317.40
Dec	323.80	321.50	321.40	321.60	319.20
Jan	325.90	323.60	323.30	322.80	320.10
Mar	329.00	326.80	326.40	325.30	322.70
May	331.90	329.70	329.30	327.90	325.20

MISSOURI GRAIN WEEKLY TRENDS

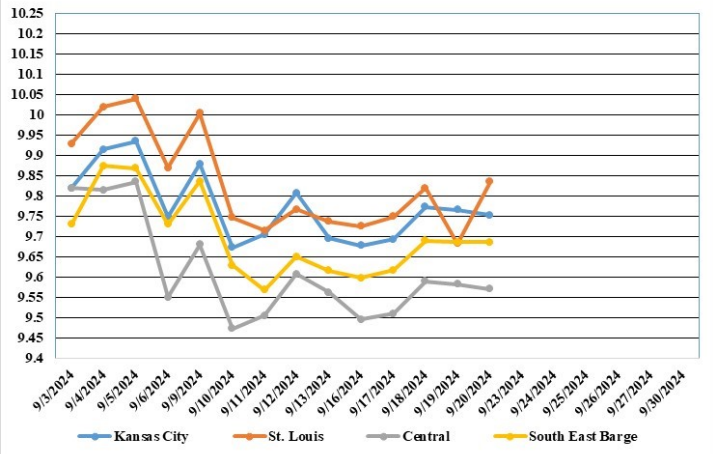
Compared to last week, Soybeans 0.06 to 0.14 higher, Wheat 0.26 lower, Corn 0.11 to 0.19 lower, Sorghum: no bid due to lack of bids.

Area	#1 Soybeans	#2 Soft Wheat	#2 Corn	#2 Grain Sorghum
Kansas City				
Friday**	9.46-10.01	5.45	3.68-3.78	---
Monday	9.45-10.00	5.29	3.66-3.76	---
Tuesday	9.46-10.01	5.25	3.67-3.77	---
Wednesday	9.54-10.09	5.25	3.67-3.77	---
Thursday	9.53-10.08	5.16	3.61-3.71	---
Friday	9.52-10.07	---	3.57-3.67	---
St. Louis				
Friday**	9.72-9.75	4.85-5.10	3.85-3.86	---
Monday	9.71-9.75	4.69-4.79	3.85-3.86	---
Tuesday	9.74-9.76	4.65-4.75	3.87	---
Wednesday	9.80-9.84	4.65-4.75	3.84-3.87	---
Thursday	9.77-9.79	4.56-4.66	3.73-3.75	---
Friday	9.81-9.86	4.59-4.69	3.69-3.71	---
Central				
Friday**	9.56	5.45	3.73-3.83	---
Monday	9.45-9.55	5.29	3.66-3.81	---
Tuesday	9.46-9.56	5.25	3.67-3.82	---
Wednesday	9.57-9.64	5.25	3.67-3.72	---
Thursday	9.53-9.63	5.16	3.61-3.66	---
Friday	9.52-9.62	5.19	3.57-3.62	---
S.E. MO				
Friday**	9.57-9.66	---	3.74-3.78	---
Monday	9.56-9.65	---	3.72-3.79	---
Tuesday	9.58-9.66	---	3.74-3.90	---
Wednesday	9.64-9.74	---	3.74-3.80	---
Thursday	9.64-9.73	---	3.66-3.72	---
Friday	9.67-9.72	---	3.61-3.68	---

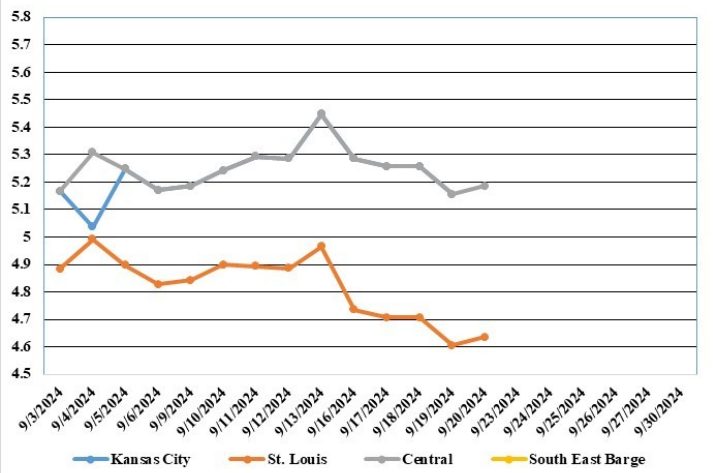
(PRICES PER BUSHEL) *NEW CROP **PREVIOUS WEEK'S PRICES
*Bids calculated using Kansas City, St. Louis, and St. Joseph bids

MONTHLY GRAIN CROP

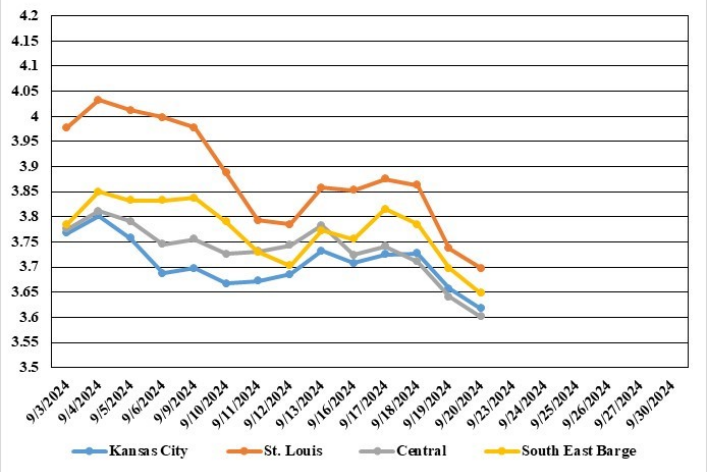
September 2024 Soybean Bids



September 2024 Wheat Bids



September 2024 Corn Bids



Only dates in which markets are trading and only current cash bids are represented.

*Axis value ranges may be updated to reflect data points.

**WHOLESALE FEEDSTUFFS PRICES
(DOLLARS PER TON-BULK BASIS)**

Area	Soybean Hulls Pellets	Soybean Meal 46.5-48%	Corn Gluten Pellets 21%	Wheat Middlings
Kansas City	155.00	349.90	180.00	122.50
St. Louis	n/a	n/a	167.50	122.50

MISSOURI CROP PROGRESS AND CONDITION

There were 6.5 days suitable for fieldwork in the week ending September 15, 2024. Statewide, the average temperature was 69.1 degrees, 0.8 degrees below normal. Precipitation averaged 0.26 inches, 0.76 inches below normal. Topsoil moisture supply was rated 11 percent very short, 43 percent short, and 46 percent adequate. Subsoil moisture supply was rated 8 percent very short, 31 percent short, 58 percent adequate, and 3 percent surplus. Corn dented reached 95 percent, compared to the 5-year average of 93 percent. Corn mature reached 74 percent, compared to the 5-year average of 52 percent. Corn harvested for grain reached 25 percent, compared to the 5-year average of 10 percent. Corn condition was rated 2 percent very poor, 3 percent poor, 11 percent fair, 63 percent good, and 21 percent excellent. Soybeans setting pods reached 96 percent, compared to the 5-year average of 94 percent. Soybeans dropping leaves reached 35 percent, compared to the 5-year average of 16 percent. Soybeans harvested reached 4 percent. Soybean condition was rated 2 percent very poor, 7 percent poor, 20 percent fair, 59 percent good, and 12 percent excellent. Cotton bolls opening reached 54 percent, compared to the 5-year average of 42 percent. Cotton condition was rated 5 percent very poor, 11 percent poor, 29 percent fair, and 55 percent good. Rice harvested reached 40 percent, compared to the 5-year average of 16 percent. Rice condition was rated 4 percent very poor, 10 percent poor, 21 percent fair, 60 percent good, and 5 percent excellent. Winter wheat planted reached 1 percent.

	Week Ending			5 yr avg.
	9/15/24	9/8/24	9/15/23	
Corn Dented	95	91	96	93
Corn Mature	74	62	65	52
Corn Harvested	25	13	16	10
Soybeans Setting Pods	96	92	98	94
Soybeans Dropping leaves	35	23	32	16
Soybeans Harvested	4	2	0	0
Cotton bolls opening	54	44	38	42
Rice harvested	40	28	23	16
Winter Wheat Planted	1	0	2	0
Alfalfa hay 3rd cutting	93	91	92	93

MISSOURI WEEKLY HAY SUMMARY

Dry conditions continue to worsen for most of the state, as of the latest report near 83 percent of the state is listed as abnormally to severely dry. There was some slow soaking rain in parts of south central and southeast Missouri over the last week that should help slightly. The dry weather is great for grain harvest that is in full swing but for the livestock producers they would sure like to see some fall pasture growth before frost arrives. Although there is some feeding going on hay movement remains fairly slow as every was lucky enough to bale a lot of hay earlier this year and needs are light at this time. There is A lot of hay for sale currently so the few that are in the market shouldn't have a very difficult time finding hay at this time. Hay prices are steady. The supply of hay is moderate to heavy, and demand is light. The Missouri Department of Agriculture has a hay directory at <https://apps.mda.mo.gov/haydirectory> or visit the University of Missouri Extension feed stuff finder at <https://feedstufffinder.org>

- Alfalfa - Supreme 250.00-300.00, small square 8.00-12.00 per bale
- Alfalfa - Premium 200.00-250.00
- Alfalfa - Good 150.00-200.00, small square 5.00-10.00 per bale
- Alfalfa - Fair 125.00-150.00
- Mixed grass - Good/Premium 150.00-200.00
- Mixed grass-Fair/Good 100.00-150.00, small square 3.50-8.00 per bale
- Mixed grass - Fair 40.00-65.00 per large round bale
- Wheat straw - 4.00-7.00 per small square bale

Please Note: The above volumes (tonnage, acres, and bales) listed are for confirmed trades only, it does not include estimated volume (tonnage) for bids or offers to the trade. List your hay for sale at: [Hay Listing Online Form](#). Explanation of Hay Quality Guidelines: [Hay Quality Designation Guidelines](#). Glossary of Terms: [Livestock, Poultry, & Grain Hay Terms](#)

MISSOURI WEEKLY SHEEP/GOAT AUCTION SUMMARY

Receipts: 1,908 Week Ago: 3,514 Last Year: 3,943
SHEEP: Feeder Lambs: Medium and Large 1-2 hair 40-50 lbs 235.00-250.00; 62 lbs 252.00-267.00. Small and Medium 1-2 30-50 lbs 217.50-260.00, pkg 40 lbs thin 202.50.
 Slaughter lambs Choice and Prime 1-3 w/s 60-75 lbs 220.00-235.00. Choice and Prime 1-2 woolled pkg 45 lbs 125.00; 50-65 lbs 235.00-245.00; 80-90 lbs 175.00-185.00. Choice 1-2 woolled pkg 58 lbs 200.00. Choice and Prime 1-2 hair 40-70 lbs 225.00-257.00; 70-80 lbs 170.00-250.00; 80-95 lbs 160.00-180.00; 90-115 lbs 140.00-165.00. Choice and Prime 1-3 hair 50-75 lbs 222.50-265.00; 80-100 lbs 175.00-200.00. Choice 1-3 hair 50-75 lbs 200.00-222.50.
 Slaughter ewes Good 2-3 pkg 204 lbs 95.00. Utility and Good 2 80-90 lbs 120.00-152.00; 100-145 lbs 100.00-126.00. Utility and Good 2-3 100-120 lbs 70.00-97.00. Good 2-3 hair 100-125 lbs 110.00-120.00. Utility and Good 1-3 85-130 lbs 82.00-107.50. Cull and Utility 1-2 95-140 lbs 52.50-72.50. Slaughter bucks 1-2 75-205 lbs 100.00-125.00. Hair bucks 1-2 115-215 lbs 105.00-137.50.
 Replacement ewes Medium and Large 2 2-4 yrs 95-105 lbs exp 140.00-147.00. Medium 1-2 1-2 yrs 62 lbs exp 235.00. Small and Medium 1-2 hair 2-4 yrs 72 lbs exp 165.00; 80-100 lbs exp 132.00-142.50; 4-6 yrs 85-125 lbs exp 125.00-132.50.
GOATS: Feeder kids Selection 1 30-40 lbs 310.00-315.00; 40-50 lbs 285.00-320.00. Selection 1-2 25-35 lbs 150.00-175.00. Selection 2 35-50 lbs 245.00-280.00. Selection 3 35-40 lbs 127.50-177.50, pygmies 150.00-182.50. Wether kids Selection 2 35-45 lbs 267.50-270.00. Selection 3 pkg 45 lbs pygmies 152.50. Slaughter kids Selection 1 lto 42 lbs high dressing 320.00; 50-65 lbs 282.50-350.00; pkg 60 lbs high dressing 322.00. Selection 1-2 40-55 lbs 230.00-257.00; pkg 62 lbs 285.00. Selection 2 40-50 lbs 180.00-210.00; 50-80 lbs 200.00-280.00.
 Slaughter nannies/does Selection 1-2 75-145 lbs 105.00-165.00. Slaughter bucks/billies Selection 1-2 pkg 50 lbs pygmies 190.00; pkg 60 lbs 150.00; 105-185 lbs 125.00-200.00. Wethers Selection 1-2 55-80 lbs 200.00-272.50; 80-145 lbs 290.00-317.50. Wether kids Selection 1 50-80 lbs 277.50-305.00.
 Replacement nannies/does Selection 1-2 1-2 yrs 85-95 lbs exp 250.00; 2-4 yrs 55-107 lbs exp 145.00-215.00; 4-6 yrs 95-105 lbs exp 147.50-167.50.

Explanatory Notes: Stage - Represents estimated lambing/kidding period (Open, Exp=exposed, Bred, Fall = Sep-Nov, Win = Dec-Feb, Spr = Mar-May, Sum=Jun-Aug; w/s = woolled and shorn; /hd= per head; /fam=per family All price CWT unless otherwise noted.

MISSOURI DROUGHT MONITOR

Date	None	D0	D1	D2	D3	D4
9/17/24	17.51	35.49	34.02	12.98	0	0
9/10/24	21.49	41.62	32.91	3.98	0	0
9/19/23	20.71	24.67	27.51	16.40	10.71	0

Reflects percentage of Missouri impacted by drought. D0 Abnormally Dry; D1 Moderate Drought; D2 Severe Drought; D3 Extreme Drought; D4 Exceptional Drought

NATIONAL DIRECT DELIVERED FEEDER PIG REPORT

09/20/24 Receipts: 121,369 Week ago: 130,860 Year Ago: 115,455
 Early weaned pigs 1.00 higher and feeder pigs steady.
 Cash 75,100 head 29.00-46.50, weighted average 38.28
 Formula 36,299 head 37.67-55.86, weighted average 44.77
 Feeder pigs 40 pounds basis:
 Cash 9,970 head 52.00-60.00, weighted average 55.83

NATIONAL DAILY DIRECT PRIOR DAY HOG REPORTS FOR 09/20/24

BARROWS AND GILTS (Carcass Basis): 2,520 head
 Base Carcass Price 72.00-79.00, weighted average 76.05

SOWS (Live Basis): 6,904 head
 300-500 lbs. 26.00-80.25
 Over 500 lbs. 62.14-80.00

MISSOURI WEEKLY DIRECT SLAUGHTER CATTLE REPORT 09/20/24

Weekly Receipts: 280 Week ago: 280 Year ago: 320
 Trading as of Friday morning, flat dressed sales inactive as producers are passing steady bids, grid dressed sales 2.00 higher.

LIVE STEERS & HEIFERS: No sales reported
DRESSED STEERS & HEIFERS: No sales reported

GRADE AND WEIGHT (Grid): 7 loads Fri morning 296.00

Click here for the current [National Crop Progress](#)
 Click here for the current [Missouri Crop Progress](#)
 The current hay directory can be found at: [Hay Directory](#).