

Weekly Market Summary

Published by:
Missouri Department of Agriculture
Ag Business Development Division
Market News Program



Chris Chinn, Director
 Jill Wood, Division Director
 Tony Hancock, Editor
[agmarketnews.mo.gov](http://www.ams.usda.gov/marketnews.htm)
<http://www.ams.usda.gov/marketnews.htm>

Michael L. Parson, Governor

Volume XLIV, Number 42 ♦ P.O. Box 630, Jefferson City, MO 65102 ♦ (573) 751-4211 ♦ Mon, Oct 21, 2024

MISSOURI WEEKLY FEEDER CATTLE WEIGHTED AVERAGE REPORT

Feeder Cattle Receipts: 20,296 Week ago: 21,986 Year ago: 19,809
 Steers and Heifers Medium and Large 1—Weighted average weights and prices

STEERS: Medium and Large 1

285 lbs. 322.84 483 lbs. 311.87 672 lbs. 275.69 875 lbs. 244.27
 332 lbs. 350.01 525 lbs. 302.73 725 lbs. 258.92 919 lbs. 240.52
 374 lbs. 357.00 569 lbs. 291.81 775 lbs. 252.79 965 lbs. 227.28
 428 lbs. 329.79 626 lbs. 278.55 829 lbs. 247.07

HEIFERS: Medium and Large 1

334 lbs. 306.72 526 lbs. 268.99 723 lbs. 249.25 917 lbs. 227.71
 358 lbs. 316.23 576 lbs. 264.09 772 lbs. 237.99
 429 lbs. 294.12 623 lbs. 256.95 812 lbs. 222.81
 472 lbs. 278.65 673 lbs. 255.67 873 lbs. 218.66

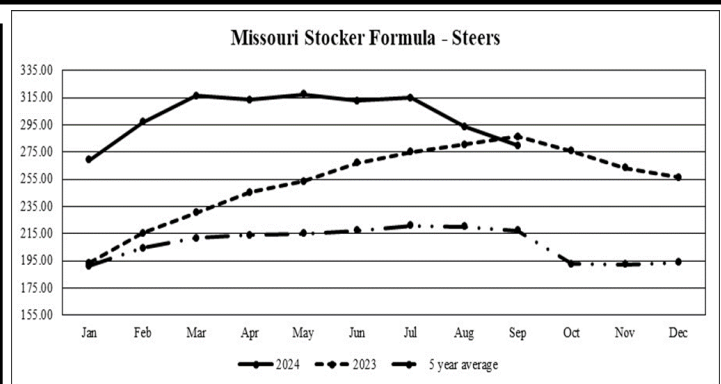
MISSOURI STEER (HEIFER) STOCKER FORMULA 10/21/2024

Monday's Missouri Stocker formula consists of **4035 (3565)** head with a weighted average weight of **554.69 (538.06)** lbs. and a price value of **284.35 (260.42)**, 5.58 lower (2.04 lower) than last week.

This a rolling seven day calculated weighted value which combines all Feeder Steers reported by MDA/USDA Market News Service weighing from 400-649 lbs. in the Medium and Large 1 and Medium and Large 1-2 frame and muscle classifications, including all comment cattle except Brahman X. Heifer values are in parentheses.

MISSOURI WEEKLY CATTLE AUCTION SUMMARY

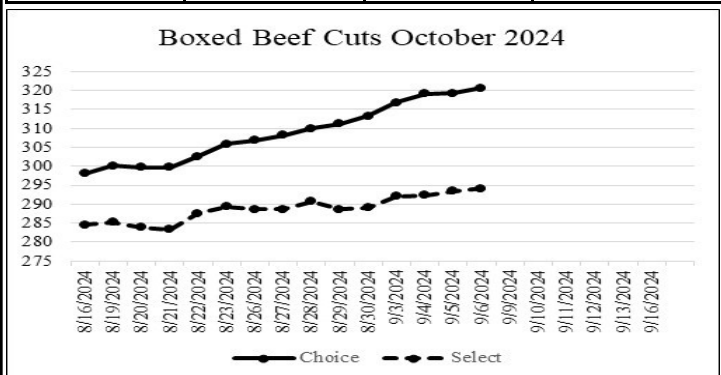
Total Receipts: 25,351 Week Ago: 25,308 Year Ago: 27,750
 Compared to last week, steers and heifers mostly steady to 5.00 lower, but there were some instances of up to 5.00 higher for the long weaned, vaccinated feeders. Demand was good on a moderate supply. Some temperature swings and even a couple of mornings of frost came to Missouri during the past week. However, a warm front is headed through, and higher than normal temperatures will be seen across the state. Some late season hay is still being baled, but most producers are comfortable with their hay supply. A good shower would be well received, as the drought and dryness footprint has spread across the state. Combines have been bellowing out clouds of dust, making it hard to see in some instances while trying to fill bins. The latest drought monitor showed 77.05 percent of the state impacted by dryness or drought, with the worst of it being located in the west central and southwest areas. Feedlot trade totaled just over 67,000 head for last week. Live FOB purchases were mostly 187.00 to 188.00 and dressed delivered purchases at 296.00. Boxed beef cuts gained quite a bit of ground this week. Choice cuts closed on Friday 9.43 higher and Select cuts closed 5.48 higher, compared to last Friday. The Choice/Select spread on Friday was 26.45. The choice/select spread reached 26.76 on Wednesday, which is the widest gap since the end of 2023. The futures market lost some ground this week with live cattle closing 0.07 to 0.98 lower and feeder cattle contracts 1.13 to 2.20 lower for the week. The Missouri Stocker Formula consists of 4035 head with a weighted average weight of 554.69 lbs and a price value of 284.35, 5.58 lower than a week ago.



*Graph is updated the first Monday of each month. Axis value ranges may be updated to reflect data points.

NATIONAL BOXED BEEF CUTOFF/BOXED BEEF CUTS

<u>DATE</u>	<u>CHOICE</u>	<u>SELECT</u>	<u>TOTAL LOADS</u>
10/14	313.32	289.1	87
10/15	316.83	292.09	136
10/16	319.13	292.37	145
10/17	319.26	293.52	143
10/18	320.65	294.20	126
5 Day Simple Average	317.84	292.26	



*Axis value ranges may be updated to reflect data points.

WEEKLY LIVESTOCK SLAUGHTER 10/19/24

	<u>CATTLE</u>	<u>HOGS</u>	<u>SHEEP</u>
Week to Date:	608,000	2,613,000	33,000
Last Week:	586,000	2,584,000	37,000
Last Year:	637,931	2,615,899	36,891

The Weekly Market Summary, as well as historical summaries, are available on our website <https://agmarketnews.mo.gov/summaries>
 Market News Hotline: 1-573-522-9244
 Check out the latest updates on our YouTube Channel: [MDA Market News](#)

SOUTHWEST MISSOURI WEEKLY SUMMARY

(Joplin and Springfield)

Receipts: 9,217 Week ago: 8,580 Year Ago: 9,464
Compared to last week, early week steers under 525 lbs 2.00 to 10.00 higher, over 525 lbs steady to 3.00 lower and heifers uneven from 5.00 lower to 6.00 higher. Late week feeders steady to 5.00 lower. Slaughter cows steady to 3.00 higher. Slaughter bulls 3.00 lower to 3.00 higher.

FEEDER STEERS:
Medium and Large 1

Table with 2 columns: Weight range and Price range. Rows include 300-400 lbs., 400-500 lbs., 500-600 lbs., 600-700 lbs., 700-800 lbs., 800-900 lbs., and 900-1000 lbs.

FEEDER HEIFERS:
Medium and Large 1

Table with 2 columns: Weight range and Price range. Rows include 300-400 lbs., 400-500 lbs., 500-600 lbs., 600-700 lbs., 700-800 lbs., 800-900 lbs., and 900-950 lbs.

FEEDER HOLSTEIN STEERS
Large 3

Scarce Scarce

SLAUGHTER COWS: Breaking and Boning (70-85% lean) 113.00-129.50; high dressing 123.00-147.50; low dressing 107.00-121.00. Lean (85-90%) 107.00-120.00

SLAUGHTER BULLS: Yield Grade 1-2 1250-2410 lbs. 145.00-170.00; high dressing 159.00-179.00; low dressing 122.50-152.00

BRED COWS: Medium and Large 1 2-8 yrs 1260-1365 lbs 2nd/3rd stage 2100.00-2750.00; >8 yrs 1216-1455 lbs 2nd/3rd stage 1825.00-1920.00. Medium and Large 1-2 2-8 yrs 915-1515 lbs 1st to 3rd stage 1525.00-2250.00; >5 yrs 990-1230 lbs 2nd/3rd stage 1400.00-1795.00 per head

COW & CALF PAIRS: Medium and Large 1-2 2-8 yrs 1050 lbs with baby calves 2250.00; 1035-1395 lbs some rebred 1st stage with 150-300 lb calves 1600.00-2500.00; >8 yrs 1075-1230 lbs some rebred 1st stage with 150-300 lb calves 2100.00-2400.00 per pair

SOUTH CENTRAL MISSOURI WEEKLY SUMMARY

(West Plains, Phillipsburg)

Receipts: 4,157 Week ago: 3,247 Year Ago: 3,776
Compared to last week, feeders early week uneven from 5.00 lower to 8.00 higher. Late week steers under 500 lbs mostly steady to 5.00 lower, over 500 lbs 3.00 to 8.00 higher. Heifers 5.00 to 12.00 higher, on comparable sales. Slaughter cows steady to 3.00 higher. Slaughter bulls steady.

FEEDER STEERS:
Medium and Large 1

Table with 2 columns: Weight range and Price range. Rows include 300-400 lbs., 400-500 lbs., 500-600 lbs., 600-700 lbs., 700-800 lbs., and 850-900 lbs.

FEEDER HEIFERS:
Medium and Large 1

Table with 2 columns: Weight range and Price range. Rows include 12 hd 352 lbs., 400-500 lbs., 500-600 lbs., 600-700 lbs., 700-750 lbs., and 800-850 lbs.

FEEDER HOLSTEIN STEERS:
Large 3

Scarce Scarce

SLAUGHTER COWS: Breaking and Boning (70-85% lean) 116.00-134.00, high dressing 125.00-140.00; low dressing 103.00-116.00. Lean (85-90%) 96.50-127.00

SLAUGHTER BULLS: Yield Grade 1-2 1070-2500 lbs. 140.00-171.00; high dressing 160.50-176.00; low dressing 120.00-151.00

BRED COWS: Medium and Large 1 2-8 yrs 1570-1705 lbs 2nd/3rd stage 2000.00-2400.00. Medium and Large 1-2 2-4 yrs 1075-1290 lbs 1st to 3rd stage 1900.00-2675.00; 2-8 yrs 1st to 3rd stage 1400.00-2150.00 per head

COW & CALF PAIRS: Medium and Large 1-2 2-8 yrs 1150-1250 lbs with baby to 150 lb calves 2500.00-2775.00 per pair

WEST CENTRAL MISSOURI WEEKLY SUMMARY

(Kingsville, Windsor, Butler)

Receipts: 3,550 Week ago: 5,170 Year ago: 4,918
Compared to last week, steers and heifers steady to 5.00 higher. Slaughter cows steady to 5.00 higher.

FEEDER STEERS:
Medium and Large 1

Table with 2 columns: Weight range and Price range. Rows include 400-500 lbs., 500-600 lbs., 600-700 lbs., 700-800 lbs., 800-850 lbs., and 900-950 lbs.

FEEDER HEIFERS:
Medium and Large 1

Table with 2 columns: Weight range and Price range. Rows include 400-500 lbs., 500-600 lbs., 600-700 lbs., 700-800 lbs., Pkg 879 lbs., and 900-950 lbs.

SLAUGHTER BULLS: Yield Grade 1-2 1250-2240 lbs 146.00-165.00; high dressing 165.00-178.00; low dressing 125.00-142.00.

SLAUGHTER COWS: Breaking and Boning (70-85% lean) 112.00-136.00, high dressing 124.00-137.00; low dressing 104.00-120.00. Lean (85-90%) 99.00-118.00

BRED COWS: Scarce

COW & CALF PAIRS: Medium and Large 1-2 >5 yrs 1350-1400lbs with 150-300 lb calves 2175.00-2635.00 per pair

NORTHEAST MISSOURI WEEKLY SUMMARY

(Bowling Green, Kingdom City, Palmyra)

Receipts: 3,166 Week ago: 3,552 Year ago: 3,795
Compared to last week, steers under 700 lbs steady to firm, spots 2.00 to 4.00 higher, over 750 lbs firm to higher undertone. Heifers 400-500 lbs 10.00 to 12.00 higher, over 500 lbs steady to firm. Slaughter cows steady to 5.00 higher.

FEEDER STEERS:
Medium and Large 1

Table with 2 columns: Weight range and Price range. Rows include 400-500 lbs., 500-600 lbs., 600-700 lbs., 750-800 lbs., and 800-900 lbs.

FEEDER HEIFERS:
Medium and Large 1

Table with 2 columns: Weight range and Price range. Rows include 400-500 lbs., 500-600 lbs., 600-700 lbs., 700-800 lbs., and Pkg 846 lbs.

SLAUGHTER BULLS: Yield Grade 1-2 1355-2215 lbs 125.00-159.00; high dressing 160.00-166.00; low dressing 137.00-145.00.

SLAUGHTER COWS: Breaking and Boning, (70-85% lean) 117.00-130.00; high dressing 129.00-144.00; low dressing 105.00-118.00. Lean (85-90%) 108.00-120.00

SLAUGHTER STEERS: Choice 2 -3 185.00-190.00. Select and Choice 1-3 182.00-183.00. Select and Choice 2-3 184.50-185.00.

SLAUGHTER HEIFERS: Choice 2-3 188.50-190.00.

BRED COWS: Medium and Large 1-2 2-8 yrs 1030-1450 lbs 2nd stage 2000.00-2400.00, 3rd stage 2525.00-2675.00; >5 yrs 1032-1470 lbs 2nd/3rd stage 1725.00-2025.00 per head

COW/CALF PAIRS: Medium and Large 1 2-8 yrs 1150-1200 lb with 150-300 lb calves 3200.00-3450.00. Medium and Large 1-2 2-8 yrs 1150-1450 lbs with 150-300 lb calves 2400.00-2700.00 per pair

NORTH CENTRAL MISSOURI WEEKLY SUMMARY

(Macon, Unionville, Green City, New Cambria)

Receipts: 2,077 Week ago: 1,547 Year ago: 1,203
Compared to two weeks ago, steers and heifers steady to firm on comparable sales. Slaughter cows and bulls steady to 2.00 higher.
*Some sale barns on a bi-weekly schedule and may not have a sale each week.

FEEDER STEERS:
Medium and Large 1

Table with 2 columns: Weight range and Price range. Rows include 450-500 lbs., 500-600 lbs., 600-700 lbs., 700-800 lbs., 800-900 lbs., and 900-950 lbs.

FEEDER HEIFERS:
Medium and Large 1

Table with 2 columns: Weight range and Price range. Rows include 300-400 lbs., 400-500 lbs., 500-600 lbs., 600-700 lbs., and 700-800 lbs.

SLAUGHTER BULLS: Yield Grade 1-2 1335-2160 lbs 147.00-169.00; high dressing 161.00-173.00; low dressing 136.00-161.50

SLAUGHTER COWS: Breaking and Boning (70-85% lean) 120.00-138.00; high dressing 133.00-137.00; low dressing 107.50-118.00. Lean (85-90%) 105.00-119.00

BRED COWS: Medium and Large 1-2 1050-1387 lbs 2nd/3rd stage 2350.00-2750.00; 5-8 yrs 1277 lbs 2nd stage 2100.00 per head

BRED HEIFER: Medium and Large 1 2-8 yrs 1300-1400 lbs with baby to 300 lb calves 3125.00-3450.00 per pair

SOUTHEAST MISSOURI WEEKLY SUMMARY

(Jackson and Farmington)

Receipts: 1,076 Week ago: 672 Year ago: 2,157
 Compared to last week, steers and heifers 3.00 to 14.00 higher with more attractive offering this week. Slaughter cows and bulls steady.

FEEDER STEERS:

Medium and Large 1

300-400 lbs.	297.00-350.00
400-500 lbs.	260.00-302.00
500-600 lbs.	260.00-290.00
600-700 lbs.	244.00-267.00
700-800 lbs.	235.00-247.00
800-850 lbs.	236.00-242.00

FEEDER HEIFERS:

Medium and Large 1

300-400 lbs.	246.00-295.00
400-500 lbs.	235.00-275.00
500-600 lbs.	230.00-275.00
600-650 lbs.	220.00-260.00
700-800 lbs.	229.00-232.00

SLAUGHTER BULLS: Yield Grade 1-2 1200-2185 lbs 125.00-143.00, high dressing 145.00-155.00

SLAUGHTER COWS: Breaking and Boning (75-85% lean) 104.00-114.00; high dressing 114.50-132.00. Lean (85-90% lean) 80.00-112.00

BRED COWS: Medium and Large 2 2-8 yrs 1150-1245 lbs 2nd stage 1750.00-2000.00 per head

COW & CALF PAIRS: Medium and Large 2 2-8 yrs 1175-1225 lbs with baby to 150 lb calves 1750.00-2000.00 per pair

EAST CENTRAL MISSOURI WEEKLY SUMMARY

(Cuba, Vienna)

Receipts: 1,559 Week Ago: 1,538 Year ago: 1,402
 Compared to last week on a limited test, feeder steers under 550 lbs 5.00 to 10.00 higher, over 550 lbs steady. Heifers steady. Slaughter cows steady.

FEEDER STEERS:

Medium and Large 1

300-400 lbs.	350.00-367.50
400-500 lbs.	302.50-365.00
500-600 lbs.	280.00-317.50
600-700 lbs.	258.00-277.00
700-800 lbs.	247.00-264.00
Pkg 853 lbs.	240.00

FEEDER HEIFERS:

Medium and Large 1

450-500 lbs.	260.00-289.00
500-600 lbs.	246.50-260.00
650-700 lbs.	230.00-231.00
Pkg 809 lbs.	215.00

SLAUGHTER BULLS: Yield Grade 1-2 1330-2105 lbs 148.00-173.00; high dressing couple 179.00-184.00; low dressing 119.50-149.00

SLAUGHTER COWS: Breaking and Boning, (70-85% lean) 122.00-131.50; high dressing 128.50-139.00; low dressing 110.00-120.00. Lean (85-90%) 109.00-120.50

BRED COWS: Medium and Large 1 2-8 yrs 1368-1390 lbs 2nd/3rd stage 2100.00-2775.00. Medium and Large 1-2 5-8 yrs 1010-1168 lbs 1st/2nd stage 1600.00-1850.00 per head

COW & CALF PAIRS: Medium and Large 1-2 >5 yrs 1025-1175 lbs with 150 to over 300 lb calves 1800.00-2425.00 per pair

NORTHWEST MISSOURI WEEKLY SUMMARY

(Tina)

Receipts: 549 Week Ago: 1,002 Year Ago: 1,035
 Compared to last week, steers and heifers mostly steady to 5.00 higher on the lighter weight calves up to 500 lbs. Slaughter cows and bulls steady.

FEEDER STEERS:

Medium and Large 1

Pkg 395 lbs.	350.00
400-500 lbs.	313.00-335.00
550-600 lbs.	292.00-296.00

FEEDER HEIFERS:

Medium and Large 1

450-500 lbs.	317.50-337.50
12 hd 507 lbs.	283.50
unweaned	

SLAUGHTER BULLS: Yield Grade 1-2 1470-2345 lbs 154.50-169.00

SLAUGHTER COWS: Breaking and Boning, (70-85% lean) 122.50-135.00; high dressing 132.00-139.50 low dressing 114.00-128.00. Lean (85-90%) 104.00-120.00

BRED COWS: Medium and Large 1-2 2-4 yrs 1018 lbs 2nd stage 2060.00; 2-8 yrs 955-1365 lbs 2nd/3rd stage 1400.00-1900.00 per head

HEIFER/CALF PAIRS: Scarce

AFTERNOON NATIONAL SLAUGHTER CATTLE REVIEW

Thus far for Friday in the Southern Plains negotiated cash trade has been slow on light demand. On Thursday in the Southern Plains live FOB purchases traded at 188.00. In Nebraska and the Western Cornbelt negotiated cash trade has been slow on light demand. On Thursday in Nebraska and the Western Cornbelt live purchases traded from 187.00-188.00, while dressed purchases traded at 296.00.

Negotiated Cash Sales:					
Confirmed:	5,447	Week Ago:	8,315	Year Ago:	15,041
Week to date:	67,229	Week Ago:	79,790	Year Ago:	89,212

Live Basis	Steers	Heifers
Over 80% Choice	185.00-188.00, avg 187.53	187.00-188.00, avg 187.23
65-80% Choice	188.00	188.00
35-65% Choice	186.00-188.00, avg 187.14	185.00
0-35% Choice	-	-
Total All Grades	185.00-188.00, avg 187.62	185.00-188.00, avg 187.46
Dressed Basis		
Over 80% Choice	296.00	296.00
65-80% Choice	-	-
35-65% Choice	-	-
0-35% Choice	-	-
Total All Grades	296.00	296.00

All Beef Type Steers/Heifers	Head	Avg Wt	Price Range	Wtd Avg
Live FOB	4,905	1,436.4	185.00-193.00	187.96
Live Del	150	1,361.7	188.00-192.00	189.81
Dressed Del	314	906.8	296.00-310.00	297.69
Dressed FOB	78	918.5	292.00-294.00	293.85

WEEKLY COMMODITY FUTURES TRENDS

Compared to last week, Live Cattle 0.07 to 0.98 lower, Lean Hogs 0.17 to 0.70 higher, Feeder Cattle 1.13 to 2.20 lower.

Daily Futures Closes

	Mon.	Tues.	Wed.	Thu.	Fri.
Cattle					
Oct	188.25	186.72	187.05	186.62	187.62
Dec	187.92	186.52	186.60	186.17	187.32
Feb	188.70	187.40	186.97	186.97	188.12
Apr	189.45	188.25	187.65	187.87	189.05
Jun	183.40	182.10	181.37	181.57	182.40
Lean Hogs					
Oct	84.10	—	—	—	—
Dec	75.80	75.22	77.70	77.67	77.82
Feb	79.82	79.30	81.10	81.55	81.85
Apr	84.20	83.80	85.05	85.12	85.62
May	87.77	87.57	88.47	88.65	89.00
Fdr Cat					
Oct	249.12	246.52	246.10	246.72	248.32
Nov	249.57	246.47	245.50	245.75	247.60
Jan	247.60	244.22	243.35	243.12	245.50
Mar	246.62	243.65	242.95	242.45	244.77
Apr	248.40	245.30	244.65	244.25	246.27
Milk					
Oct	22.53	22.54	22.55	22.58	22.76
Nov	20.79	21.04	21.16	21.46	21.19
Dec	20.58	20.92	21.28	21.49	21.35

WEEKLY COMMODITY GRAIN FUTURES TRENDS

Compared to last week, Soybeans 0.35 to 0.39 lower, Wheat 0.27 to 0.30 lower, Corn 0.11 to 0.16 lower, KC Wheat 0.24 to 0.27 lower, Soybean Meal

Daily Grain Futures Closes

	Mon.	Tues.	Wed.	Thu.	Fri.
Soybeans					
Nov	996	991	980	988 3/4	970
Jan	1011 1/2	1003 1/2	994	998	982 3/4
Mar	1025 1/4	1016 3/4	1007 3/4	1009 3/4	996 1/4
May	1039 1/4	1030 1/2	1022	1024	1011
Jul	1051	1041 1/4	1033 1/2	1035 1/4	1023
Wheat					
Dec	585 1/4	579 1/2	585	589 1/2	572 3/4
Mar	607 1/4	600 3/4	605 1/4	609 1/2	592 1/2
May	619	611 1/2	616	620 1/2	603 1/2
Jul	624 3/4	616 1/2	621	625 1/2	609 1/4
Sep	634	625	629 1/4	633 3/4	618 3/4
Corn					
Dec	408 1/4	401 1/4	404 3/4	406 3/4	404 3/4
Mar	424 3/4	417 1/2	420 1/2	421 1/4	419
May	433	426	428 3/4	428 3/4	426 1/2
Jul	437 3/4	431 1/2	434	433 1/4	431 1/4
Sep	435 3/4	430	431 1/2	430 1/2	428 1/2
KC Wheat					
Dec	590	583	588 3/4	596	580 3/4
Mar	606	598 3/4	603 1/2	610	595 3/4
May	616 1/4	608 3/4	613 1/4	619 1/4	605
Jul	624 1/2	617	621	626	612 3/4
Sep	635	627 1/2	631	635 3/4	622 1/2
SB Meal					
Oct	316.50	311.80	313.70	318.10	315.60
Dec	315.30	311.40	312.30	314.90	313.30
Jan	315.10	312.80	313.20	315.10	313.60
Mar	316.60	315.40	315.70	317.20	315.90
May	319.20	318.90	319.20	320.40	319.10

MISSOURI GRAIN WEEKLY TRENDS

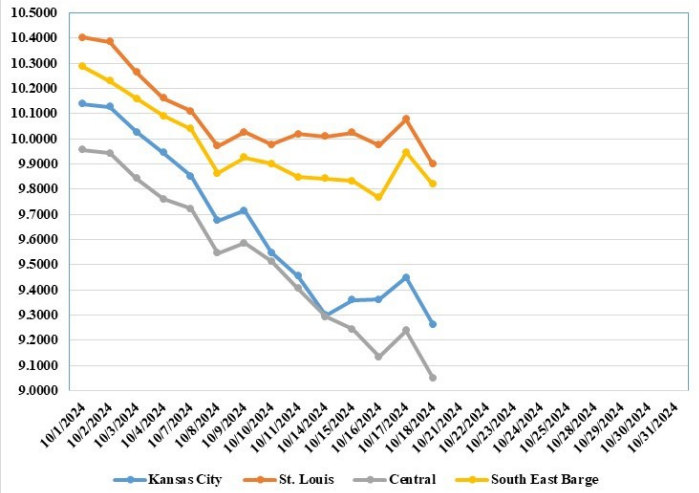
Compared to last week, Soybeans 0.35 lower to 0.04 higher, Wheat 0.26 to 0.27 lower, Corn 0.16 lower to 0.09 higher, Sorghum: no trend due to lack of bids.

Area	#1 Soybeans	#2 Soft Wheat	#2 Corn	#2 Grain Sorghum
Kansas City				
Friday**	9.36-9.56	—	3.71-3.76	—
Monday	9.26-9.46	—	3.63-3.68	—
Tuesday	9.21-9.61	—	3.56-3.61	—
Wednesday	9.15-9.70	—	3.60-3.65	—
Thursday	9.24-9.79	—	3.62-3.67	—
Friday	9.05-9.60	—	3.60-3.65	—
St. Louis				
Friday**	9.99-10.06	5.09-5.59	3.98-4.02	4.78
Monday	9.98-10.04	4.95-5.45	3.95	4.70
Tuesday	9.99-10.06	4.90-5.40	3.91-3.96	4.63
Wednesday	9.97-9.98	4.95-5.45	4.00-4.02	4.67
Thursday	10.07-10.09	5.00-5.50	4.05-4.07	4.69
Friday	9.90	4.83-5.33	4.07	—
Central				
Friday**	9.36-9.46	5.49	3.71-3.76	—
Monday	9.26-9.31	5.35	3.63-3.68	—
Tuesday	9.21-9.26	5.30	3.56-3.61	—
Wednesday	9.10-9.15	5.35	3.60-3.65	—
Thursday	9.19-9.29	5.40	3.62-3.67	—
Friday	9.00-9.10	5.23	3.60-3.65	—
S.E. MO				
Friday**	9.78-9.93	—	3.92-4.06	—
Monday	9.74-9.91	—	3.89-3.98	—
Tuesday	9.70-9.91	—	3.86-3.96	—
Wednesday	9.70-9.82	—	3.95-4.10	—
Thursday	9.89-9.99	—	4.00-4.12	—
Friday	9.75-9.95	—	4.05-4.15	—

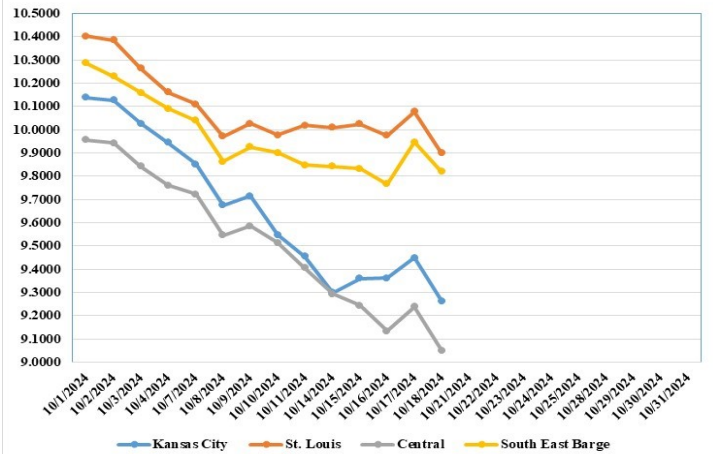
(PRICES PER BUSHEL) *NEW CROP **PREVIOUS WEEK'S PRICES
*Bids calculated using Kansas City, St. Louis, and St. Joseph bids

MONTHLY GRAIN CROP

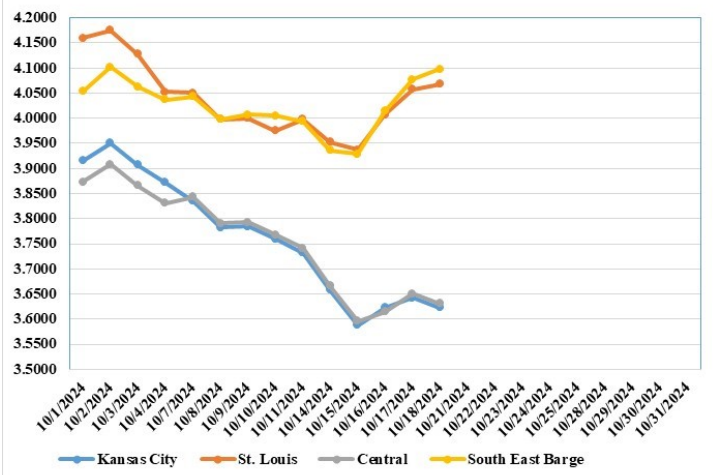
October 2024 Soybean Bids



October 2024 Soybean Bids



October 2024 Corn Bids



Only dates in which markets are trading and only current cash bids are represented.

*Axis value ranges may be updated to reflect data points.

WHOLESALE FEEDSTUFFS PRICES (DOLLARS PER TON-BULK BASIS)

Area	Soybean Hulls Pellets	Soybean Meal 46.5-48%	Corn Gluten Pellets 21%	Wheat Middlings
Kansas City	n/a	343.10	195.00	141.67
St. Louis	n/a	n/a	200.00	135.50

MISSOURI CROP PROGRESS AND CONDITION

There were 6.9 days suitable for fieldwork in the week ending October 13, 2024. Statewide, the average temperature was 63.5 degrees, 5.6 degrees above normal. Precipitation averaged 0.00 inches, 0.63 inches below normal. Topsoil moisture supply was rated 17 percent very short, 39 percent short, and 44 percent adequate. Subsoil moisture supply was rated 12 percent very short, 35 percent short, and 53 percent adequate. Corn harvested for grain reached 73 percent, compared to the 5-year average of 58 percent. Soybeans dropping leaves reached 91 percent, compared to the 5-year average of 84 percent. Soybeans harvested reached 41 percent, compared to the 5-year average of 28 percent. Soybean condition was rated 2 percent very poor, 7 percent poor, 22 percent fair, 56 percent good, and 13 percent excellent. Cotton bolls opening reached 98 percent, compared to the 5-year average of 95 percent. Cotton harvested reached 38 percent, compared to the 5-year average of 25 percent. Cotton condition was rated 3 percent very poor, 6 percent poor, 25 percent fair, and 66 percent good. Rice harvested reached 92 percent, compared to the 5-year average of 82 percent. Winter wheat planted reached 22 percent, compared to the 5-year average of 26 percent. Winter wheat emerged reached 4 percent, compared to the 5-year average of 8 percent.

	Week Ending			
	10/13/24	10/6/24	10/13/23	5 yr avg.
Corn Harvested	73	62	62	58
Soybeans Dropping leaves	91	84	94	84
Soybeans Harvested	41	23	41	28
Cotton bolls opening	98	93	94	95
Cotton Harvested	38	20	39	25
Rice harvested	92	82	87	82
Winter Wheat Planted	22	10	27	26
Winter Wheat Emerged	4	2	5	8

MISSOURI WEEKLY HAY SUMMARY

Missouri crop farmers have had plenty of dry days lately to make more progress for harvest season. As of Monday's report, USDA estimated 73 percent of corn has been harvested, 11 points ahead of last year and 15 ahead of the five-year average. Soybean harvest is 41 percent completed, steady with last year and 13 points ahead of the five-year average. After clearing fields, producers have been getting wheat into the ground, with 22 percent of winter wheat planted and 4 percent emerged, as of Monday's report. Along with the dry days, the drought footprint has increased for this week. We are not in as bad of a shape as we were a year ago, but not too far behind. The latest drought monitor categorized the state: D0 Abnormally Dry 37.68 percent, D1 Moderate Drought 21.30 percent, D2 Severe Drought 13.57 percent, D3 Extreme Drought 4.50 percent and 22.95 percent not included on the current drought map. Compared to just three months ago, there was only 1.2 percent of the state categorized as D0 Abnormally Dry and the rest of the state was not included on the drought monitor. Hay prices are steady to weak. The supply of hay is moderate to heavy and demand is light. The Missouri Department of Agriculture has a hay directory at <https://apps.mda.mo.gov/haydirectory> or visit the University of Missouri Extension feed stuff finder at <https://feedstufffinder.org>

- Alfalfa - Supreme 250.00-300.00, small square 8.00-12.00 per bale
- Alfalfa - Premium 200.00-250.00
- Alfalfa - Good 150.00-200.00, small square 5.00-10.00 per bale
- Alfalfa - Fair 125.00-150.00
- Mixed grass - Good/Premium 150.00-200.00
- Mixed grass-Fair/Good 100.00-150.00, small square 3.50-8.00 per bale
- Mixed grass - Fair 40.00-65.00 per large round bale
- Corn Stalks - 35.00 per large round bale
- Wheat straw - 4.00-7.00 per small square bale

Please Note: The above volumes (tonnage, acres, and bales) listed are for confirmed trades only, it does not include estimated volume (tonnage) for bids or offers to the trade. List your hay for sale at: [Hay Listing Online Form](#). Explanation of Hay Quality Guidelines: [Hay Quality Designation Guidelines](#). Glossary of Terms: [Livestock, Poultry, & Grain Hay Terms](#)

MISSOURI WEEKLY SHEEP/GOAT AUCTION SUMMARY

Receipts: 2,254 Week Ago: 602 Last Year: 1,765
SHEEP: Feeder Lambs: Medium and Large 1-2 30-40 lbs 220.00-257.00. Small and Medium 1-2 hair 30-50 lbs 230.00-247.50. Slaughter lambs Choice and Prime 1-3 w/s lot 88 lbs 200.00; 90-125 lbs 170.00-177.50. Choice 1-3 w/s 25 hd 83 lbs 165.00; pkg 91 lbs 155.00; pkg 107 lbs 137.50. Choice and Prime 1-3 60-70 lbs 210.00-225.00; pkg 87 lbs 150.00. Choice and Prime 1-2 hair 13 hd 39 lbs 140.00; 40-80 lbs 220.00-240.00; 80-90 lbs 180.00-195.00. Choice and Prime 1-3 hair 50-70 lbs 242.50-275.00; 70-80 lbs 220.00-242.00; 80-90 lbs 197.50-210.00; 90-105 lbs 165.00-185.00; pkg 117 lbs 152.50. Choice 1-2 hair 50-60 lbs 217.00-220.00; pkg 73 lbs 180.00; pkg 97 lbs 160.00. Choice 1-3 hair 50-70 lbs 220.00-240.00; 70-80 lbs 205.00-225.00; 80-90 lbs 180.00-190.00; pkg 97 lbs 165.00; pkg 128 lbs 125.00. Good 1-2 hair 50-70 lbs 185.00-205.00; pkg 72 lbs 177.50; 26 hd 96 lbs 140.00; 100-110 lbs 122.50. Slaughter ewes Utility and Good 1-3 115-150 lbs 82.50-85.00. Utility and Good 2 110-180 lbs 90.00-117.00. Good 2-3 hair 90-140 lbs 90.00-105.00. Utility and Good 1-3 hair 85-145 lbs 80.00-92.50. Slaughter bucks 1-2 110-200 lbs 100.00-130.00. Hair bucks 1-2 120-185 lbs 102.50-140.00. Replacement ewes Medium and Large 1-2 2-4 yrs 80-225 lbs 120.00-155.00. Small and Medium 1-2 hair 1-2 yrs 80 lbs exp 150.00; 100 lbs exp 127.50; 2-4 yrs 109 lbs exp 110.00-120.00. Replacement bucks Medium and Large 1-2 <1 yrs 80-150 lbs 145.00-165.00.
GOATS: Feeder kids Selection 1 30-50 lbs 280.00-325.00. Selection 1-2 30-40 lbs 180.00-240.00. Selection 2 pkg 25 lbs pygmies 190.00; 30-50 lbs 190.00-265.00. Selection 3 pkg 29 lbs pygmies 105.00; pkg 33 lbs 145.00; 30-50 lbs pygmies 102.50-145.00; 18 hd 49 lbs 147.50. Wether kids Selection 2 pkg 39 lbs pygmies 185.00. Slaughter kids Selection 1 50-85 lbs 285.00-320.00. Selection 1-2 40-75 lbs 237.00-280.00. Selection 2 50-75 lbs 205.00-275.00. Selection 3 pkg 27 lbs 130.00; pkg 50 lbs 165.00; pkg 62 lbs 155.00. Slaughter nannies/does Selection 1-2 pkg 56 lbs 157.50; 50-85 lbs pygmies 97.50-140.00; 60-190 lbs 105.00-135.00. Slaughter bucks/billies Selection 1-2 70-145 lbs 132.50-180.00; 150-195 lbs 175.00-262.50. Selection 2 pkg 220 lbs 190.00. Wether kids Selection 1 50-90 lbs 285.00-312.50. Replacement nannies/does Selection 1-2 1-2 yrs 82 lbs exp 150.00-160.00; 2-4 yrs 110-140 lbs exp 135.00-140.00. Selection 2 2-4 yrs 64 lbs exp 230.00.

Explanatory Notes: Stage - Represents estimated lambing/kidding period (Open, Exp=exposed, Bred, Fall = Sep-Nov, Win = Dec-Feb, Spr = Mar-May, Sum=Jun-Aug; w/s = woolled and shorn; /hd= per head; /fam=per family All price CWT unless otherwise noted.

MISSOURI DROUGHT MONITOR

Date	None	D0	D1	D2	D3	D4
10/15/24	22.95	37.68	21.30	13.57	4.50	0
10/08/24	29.24	41.33	14.79	11.23	3.41	0
10/17/23	15.32	21.91	30.96~	21.51	10.30	0

Reflects percentage of Missouri impacted by drought. D0 Abnormally Dry; D1 Moderate Drought; D2 Severe Drought; D3 Extreme Drought; D4 Exceptional Drought

NATIONAL DIRECT DELIVERED FEEDER PIG REPORT

10/18/24 Receipts: 110,250 Week ago: 124,000 Year Ago: 124,484
 Early weaned pigs steady to 2.00 higher and feeder pigs 4.00 higher.
 Cash 73,855 head 35.00-54.00, weighted average 45.58
 Formula 25,120 head 41.04-54.32, weighted average 47.79
 Feeder pigs 40 pounds basis:
 Cash 11,275 head 53.00-65.00, weighted average 61.61

NATIONAL DAILY DIRECT PRIOR DAY HOG REPORTS FOR 10/18/24

BARROWS AND GILTS (Carcass Basis): 6.47 head
 Base Carcass Price 69.00-77.00, 5day rolling average 75.43
SOWS (Live Basis): 5,887 head
 300-500 lbs. 26.00-79.43
 Over 500 lbs. 62.84-80.00

MISSOURI WEEKLY DIRECT SLAUGHTER CATTLE REPORT 10/18/24

Weekly Receipts: 240 Week ago: 360 Year ago: 360
 Trading as of Friday morning, flat dressed sales steady and dressed grid sales inactive.

LIVE STEERS & HEIFERS: No sales reported
DRESSED STEERS & HEIFERS: Thu 6 loads flat 296.00

GRADE AND EIGHT (Grid): No sales reported

Click here for the current [National Crop Progress](#)
 Click here for the current [Missouri Crop Progress](#)
 The current hay directory can be found at: [Hay Directory](#).