

# Weekly Market Summary

Published by:  
**Missouri Department of Agriculture**  
**Ag Business Development Division**  
**Market News Program**



Chris Chinn, Director  
 Jill Wood, Division Director  
 Tony Hancock, Editor  
<http://www.ams.usda.gov/marketnews.htm>  
<http://www.ams.usda.gov/marketnews.htm>

Michael L. Parson, Governor

Volume XLIV, Number 43 ♦ P.O. Box 630, Jefferson City, MO 65102 ♦ (573) 751-4211 ♦ Mon, Oct 28, 2024

## MISSOURI WEEKLY FEEDER CATTLE WEIGHTED AVERAGE REPORT

Feeder Cattle Receipts: 25,608 Week ago: 20,296 Year ago: 18,510  
 Steers and Heifers Medium and Large 1—Weighted average weights and prices

### STEERS: Medium and Large 1

319 lbs. 361.81	523 lbs. 300.39	727 lbs. 258.63	911 lbs. 236.19
367 lbs. 350.21	573 lbs. 287.89	779 lbs. 253.96	961 lbs. 231.65
429 lbs. 333.36	625 lbs. 274.55	822 lbs. 250.58	1076 lbs. 211.00
475 lbs. 316.96	673 lbs. 263.68	871 lbs. 247.36	

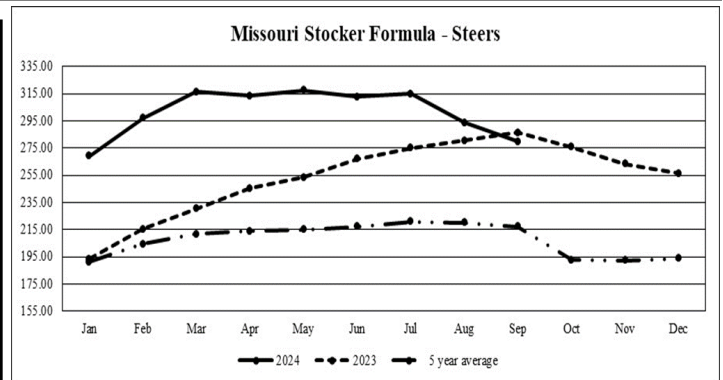
### HEIFERS: Medium and Large 1

331 lbs. 313.48	529 lbs. 272.29	725 lbs. 243.54	918 lbs. 221.00
380 lbs. 300.16	579 lbs. 261.16	773 lbs. 239.63	972 lbs. 217.58
426 lbs. 292.40	624 lbs. 260.08	824 lbs. 231.93	
472 lbs. 283.74	672 lbs. 245.33	858 lbs. 227.68	

## MISSOURI STEER (HEIFER) STOCKER FORMULA 10/28/2024

Monday's Missouri Stocker formula consists of **4780 (4207)** head with a weighted average weight of **554.66 (545.87)** lbs. and a price value of **282.50 (258.26)**, 1.85 lower (2.16 lower) than last week.

This a rolling seven day calculated weighted value which combines all Feeder Steers reported by MDA/USDA Market News Service weighing from 400-649 lbs. in the Medium and Large 1 and Medium and Large 1-2 frame and muscle classifications, including all comment cattle except Brahman X. Heifer values are in parentheses.



\*Graph is updated the first Monday of each month. Axis value ranges may be updated to reflect data points.

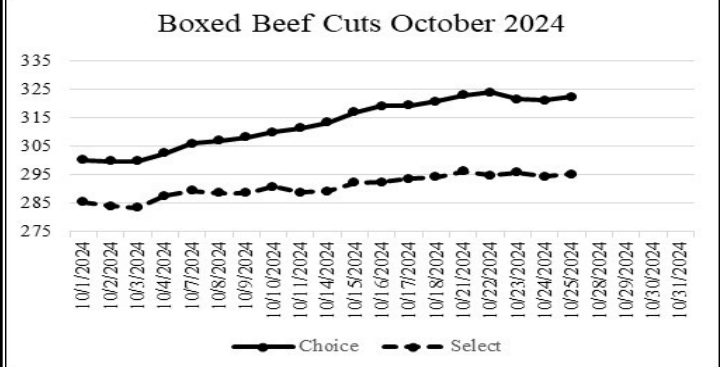
## MISSOURI WEEKLY CATTLE AUCTION SUMMARY

Total Receipts: 29,685 Week Ago: 25,351 Year Ago: 24,471

Compared to last week, feeder steers and heifers sold uneven. Weaned and vaccinated calves and yearlings sold steady to 4.00 higher, while unweaned and especially unvaccinated calves sold steady to 3.00 lower. As typical for the market in October as the seasonal temperature swings become extreme, health and weaning programs really show their value. Bawling calves without any shots are not that desirable currently as new owners, even with the best vet and husbandry skills, struggle to keep these types healthy. On the other hand, those producers who have weaned and given a couple rounds of vaccinations and prepared livestock for the stress that comes with a new location during the seasonal changes get rewarded. Dryness continues to worsen across the entire state as well as many of the surrounding cattle states. Water issues in some of the driest areas of the state have been reported and there are concerns about the lack of wheat for grazing in neighboring states which is a big sector of the fall market. Ample supplies of hay baled in the first half of the year, for the time being at least, means there is plenty of feed although most everyone would prefer grazing stockpiled pasture opposed to feeding this early. The monthly Cattle on Feed Report was released on Friday afternoon. Overall, the report will likely be viewed as neutral to leaning slightly negative. Numbers were mostly within the pre report estimates but placements and on feed numbers were both above the average and toward the top end of the estimates. A few stick-out sales this week included 45 head of 427 lb. steers at Joplin Regional Stockyards which sold for 347.50 and 176 head of 790 lb. steers which brought 257.55. Unionville Livestock Market sold 21 head of 523 lb. steers at 322.50 as well as 6 loads of reputation steers weighting from 865-882 lbs. from 252.25-254.50. South Central Regional Stockyards sold 30 head of 718 lbs. steers for 262.00 and 22 head of 409 lb. heifers at 320.00. Callaway Livestock Center sold 85 head of 609 lb. heifers at 276.10. Lolli Brothers Livestock Market sold a load of 722 lb. fancy heifers at 265.00. At Tina Livestock Market a load of 825 lb. heifers sold for 238.25. Boxed beef cutouts climbed slightly higher for the week, choice closed on Friday at 322.24, up 1.59 and select closed at 295.08, up 0.88 compared to last week. Negotiated feedlot sales as of the Friday afternoon report total 94K head with much of the trade taking place on Thursday this week. For the seventh consecutive week packers have given up more money as markets continue to climb. Live sales were reported from 188.00-192.00, with most sales around the 190.00 mark and dressed sales from mostly at 298.00 however a few were up to 302.00. The Missouri Stocker formula consists of 4780 head with a weighted average weight of 554.66 lbs. and a price value of 282.50, 1.85 lower than a week ago. The steer/heifer spread is 24.24 per cwt.

## NATIONAL BOXED BEEF CUTOFF/BOXED BEEF CUTS

DATE	CHOICE	SELECT	TOTAL LOADS
10/21	322.86	296.21	118
10/22	323.96	294.80	142
10/23	321.41	295.77	136
10/24	321.17	294.34	189
10/25	322.24	295.08	87
5 Day Simple Average	322.33	295.24	



\*Axis value ranges may be updated to reflect data points.

## WEEKLY LIVESTOCK SLAUGHTER 10/26/24

	CATTLE	HOGS	SHEEP
Week to Date:	623,000	2,593,000	34,000
Last Week:	608,000	2,602,000	33,000
Last Year:	634,701	2,611,132	36,786

The Weekly Market Summary, as well as historical summaries, are available on our website <https://agmarketnews.mo.gov/summaries>  
 Market News Hotline: 1-573-522-9244  
 Check out the latest updates on our YouTube Channel: [MDA Market News](https://www.youtube.com/channel/UCMjKjKjKjKjKjKjKjKjKjKj)

**SOUTHWEST MISSOURI WEEKLY SUMMARY**

(Joplin and Springfield)

Receipts: 10,463 Week ago: 9,217 Year Ago: 6,768  
Compared to last week, steers and heifers uneven from 5.00 lower to 4.00 higher. Slaughter cows 1.00 to 4.00 lower. Slaughter bulls steady to 5.00 lower.

**FEEDER STEERS:**  
Medium and Large 1

Table with 2 columns: Weight range and Price range. Rows include 300-400 lbs., 400-500 lbs., 500-600 lbs., 600-700 lbs., 700-800 lbs., 800-900 lbs., 900-1000 lbs.

**FEEDER HEIFERS:**  
Medium and Large 1

Table with 2 columns: Weight range and Price range. Rows include 17hd 388 lbs., 400-500 lbs., 500-600 lbs., 600-700 lbs., 700-800 lbs., 800-850 lbs., 48 hd 983 lbs.

**FEEDER HOLSTEIN STEERS**  
Large 3

Table with 2 columns: Weight range and Price range. Rows include 500-600 lbs., 600-700 lbs., 700-800 lbs., 800-900 lbs., Pkg 1081 lbs.

**SLAUGHTER COWS:** Breaking and Boning (70-85% lean) 107.50-126.00; high dressing 123.00-140.00; low dressing 102.00-117.00. Lean (85-90%) 103.00-119.00

**SLAUGHTER BULLS:** Yield Grade 1-2 1210-2540 lbs. 145.00-168.00; high dressing 159.00-179.00; low dressing 123.00-150.00

**BRED COWS:** Medium and Large 1 2-8 yrs 1090-1590 lbs 2nd/3rd stage 2150.00-2450.00; >8 yrs 1370 lbs 2nd/3rd stage 1825.00. Medium and Large 1-2 2-8 yrs 975-1415 lbs 2nd/3rd stage 1475.00-1925.00, 1st stage 1400.00-1500.00; >8 yrs 1134 lbs 2nd/3rd stage 1475.00 per head

**BRED HEIFERS:** Medium and Large 1 <2 yrs pkg 945 lbs 1st stage 1820.00. Medium and Large 1-2 <2 yrs 985 lbs 2nd/3rd stage 1625.00; 2-4 yrs 960-1100 lbs 2nd/3rd stage 1475.00-1650.00 per head

**COW & CALF PAIRS:** Medium and Large 1 2-8 yrs 1210 lbs rebred 1st stage with >300 lb calves 3325.00. Medium and Large 1-2 >8 yrs 1220 lbs rebred 1st stage with >300 lb calves 2800.00 per pair

**SOUTH CENTRAL MISSOURI WEEKLY SUMMARY**

(West Plains, Phillipsburg)

Receipts: 3,989 Week ago: 4,157 Year Ago: 3,301  
Compared to last week, steers and heifers uneven from 5.00 lower to 5.00 higher, late week spots 15.00 higher on steers less than 500 lbs. Slaughter cows and bulls early week mostly steady to 5.00 higher, late week 2.00 to 4.00 lower.

**FEEDER STEERS:**  
Medium and Large 1

Table with 2 columns: Weight range and Price range. Rows include 300-400 lbs., 400-500 lbs., 500-600 lbs., 600-700 lbs., 700-800 lbs., 800-850 lbs., 900-1000 lbs.

**FEEDER HEIFERS:**  
Medium and Large 1

Table with 2 columns: Weight range and Price range. Rows include 300-400 lbs., 400-500 lbs., 500-600 lbs., 600-700 lbs., 700-750 lbs., Lot 816 lbs., 20 hd 918 lbs.

**FEEDER HOLSTEIN STEERS:**  
Large 3

Scarce Scarce

**SLAUGHTER COWS:** Breaking and Boning (70-85% lean) 110.50-135.00, high dressing 123.00-149.00; low dressing 95.00-120.00. Lean (85-90%) 104.00-120.00

**SLAUGHTER BULLS:** Yield Grade 1-2 1000-2175 lbs. 139.00-175.00; high dressing 156.50-200.00; low dressing 120.50-149.00

**BRED COWS:** Medium and Large 1 2-8 yrs 2130-1580 lbs 2nd/3rd stage 1800.00-2000.00. Medium and Large 1-2 2-4 yrs 1085-1250 lbs 1st/2nd stage 1750.00-2200.00; 2-8 yrs 1020-1335 lbs 2nd/3rd stage 1500.00-2100.00, 1st stage 1300.00-1400.00 per head

**COW & CALF PAIRS:** Medium and Large 1-2 2-8 yrs 1100-1300 lbs with baby calves 1875.00-2150.00 per pair

**WEST CENTRAL MISSOURI WEEKLY SUMMARY**

(Kingsville, Windsor, Butler)

Receipts: 3,589 Week ago: 3,550 Year ago: 3,791  
Compared to last week, feeders sold mostly steady. Slaughter cows sold steady to 7.00 lower.

**FEEDER STEERS:**  
Medium and Large 1

Table with 2 columns: Weight range and Price range. Rows include 400-500 lbs., 500-600 lbs., 600-700 lbs., 700-800 lbs., 800-850 lbs., 950-1000 lbs.

**FEEDER HEIFERS:**  
Medium and Large 1

Table with 2 columns: Weight range and Price range. Rows include 400-500 lbs., 500-600 lbs., 600-700 lbs., 700-800 lbs., 850-900 lbs., Pkg 1017 lbs.

**SLAUGHTER BULLS:** Yield Grade 1-2 1173-2190 lbs 144.00-160.00; high dressing 164.00-168.00; low dressing 130.00-138.00

**SLAUGHTER COWS:** Breaking and Boning (70-85% lean) 107.00-126.50, high dressing 123.00-137.00; low dressing 96.00-111.00. Lean (85-90%) 95.00-109.00

**BRED COWS:** Scarce

**COW & CALF PAIRS:** Scarce

**NORTHEAST MISSOURI WEEKLY SUMMARY**

(Bowling Green, Kingdom City, Palmyra)

Receipts: 4,194 Week ago: 3,166 Year ago: 3,574  
Compared to last week, steers 500-550 lbs 5.00 to 7.00 lower, heifers 550-600 lbs steady to 5.00 lower, steers over 700 lbs and steers over 650 lbs firm to 2.00 higher, others not well tested. Slaughter cows steady to 3.00 higher.

**FEEDER STEERS:**  
Medium and Large 1

Table with 2 columns: Weight range and Price range. Rows include 400-500 lbs., 500-600 lbs., 600-700 lbs., 750-800 lbs., 800-900 lbs., 60 hd 900 lbs.

**FEEDER HEIFERS:**  
Medium and Large 1

Table with 2 columns: Weight range and Price range. Rows include 400-500 lbs., 500-600 lbs., 600-700 lbs., 700-800 lbs., 800-900 lbs., 950-1000 lbs.

**SLAUGHTER BULLS:** Yield Grade 1-2 1370-2245 lbs 147.00-158.00; high dressing 160.00-167.00; low dressing 130.00-145.00

**SLAUGHTER COWS:** Breaking and Boning (70-85% lean) 117.00-130.00; high dressing 126.00-149.00; low dressing 105.00-118.00. Lean (85-90%) 106.00-120.00

**SLAUGHTER STEERS:** Choice 2 -3 185.00-190.00. Select and Choice 1-3 182.00-185.00. Select 1-2 176.50-177.00.

**SLAUGHTER HEIFERS:** Choice 2-3 185.50-189.00

**BRED COWS:** Scarce

**COW/CALF PAIRS:** Scarce

**NORTH CENTRAL MISSOURI WEEKLY SUMMARY**

(Macon, Unionville, Green City, New Cambria)

Receipts: 2,714 Week ago: 2,077 Year ago: 3,030  
Compared to two weeks ago, feeders steady to firm, spots up to 10.00 higher. Slaughter cows steady to 2.00 higher.

\*Some sale barns on a bi-weekly schedule and may not have a sale each week.

**FEEDER STEERS:**  
Medium and Large 1

Table with 2 columns: Weight range and Price range. Rows include 400-500 lbs., 500-600 lbs., 600-700 lbs., 700-800 lbs., 800-900 lbs.

**FEEDER HEIFERS:**  
Medium and Large 1

Table with 2 columns: Weight range and Price range. Rows include 300-400 lbs., 400-500 lbs., 500-600 lbs., 600-700 lbs., 700-800 lbs., Pkg 815 lbs.

**SLAUGHTER BULLS:** Yield Grade 1-2 1380-1925 lbs 144.00-154.20; low dressing 130.00-140.00

**SLAUGHTER COWS:** Breaking and Boning (70-85% lean) 111.00-131.00; high dressing 130.00-134.00; low dressing 106.00-117.00. Lean (85-90%) 109.00-117.00

**BRED COWS:** Scarce

**BRED HEIFERS:** Scarce

**SOUTHEAST MISSOURI WEEKLY SUMMARY**

(Jackson and Farmington)

Receipts: 1,367 Week ago: 1,076 Year ago: 1,345  
 Compared to last week, steers and heifers uneven from 7.00 lower to 3.00 higher. Slaughter cows and bulls steady.

**FEEDER STEERS:**

Medium and Large 1

300-400 lbs.	278.00-322.00
400-500 lbs.	250.00-313.00
500-600 lbs.	260.00-289.00
600-700 lbs.	244.00-270.00
700-800 lbs.	225.00-250.00
800-850 lbs.	222.00-240.00

**FEEDER HEIFERS:**

Medium and Large 1

300-400 lbs.	254.00-295.00
400-500 lbs.	235.00-267.00
500-600 lbs.	230.00-269.00
600-700 lbs.	220.00-243.00
700-750 lbs.	226.00-236.00

**SLAUGHTER BULLS:** Yield Grade 1-2 1190-2055 lbs 124.00-147.00, high dressing 144.00-161.00

**SLAUGHTER COWS:** Breaking and Boning (75-85% lean) 104.00-115.00; high dressing 115.00-139.00. Lean (85-90% lean) 74.00-100.00

**BRED COWS:** Medium and Large 2 2-8 yrs 1025-1165 lbs 1st/2nd stage 1525.00-2300.00 per head

**COW & CALF PAIRS:** Scarce

**EAST CENTRAL MISSOURI WEEKLY SUMMARY**

(Cuba, Vienna)

Receipts: 2,043 Week Ago: 1,559 Year ago: 1,192  
 Feeder steers steady to 6.00 lower with decline on unweaned calves over 500 lbs. Feeder heifers 400-550 lbs 5.00-10.00 higher, other weights near steady. Slaughter cows steady to 2.00 lower.

**FEEDER STEERS:**

Medium and Large 1

450-500 lbs.	309.00-329.00
500-600 lbs.	265.00-317.00
600-650 lbs.	260.00-285.00
700-800 lbs.	251.00-262.00
34 hd 863 lbs.	249.00

**FEEDER HEIFERS:**

Medium and Large 1

300-400 lbs.	311.00-319.00
400-500 lbs.	267.50-320.00
500-600 lbs.	254.00-289.00
600-700 lbs.	229.25-252.00
700-750 lbs.	230.00-234.50

**SLAUGHTER BULLS:** Yield Grade 1-2 1390-2295 lbs 152.50-169.00; high dressing couple 166.50-174.00; low dressing 130.00-149.00

**SLAUGHTER COWS:** Breaking and Boning, (70-85% lean) 116.00-132.50; high dressing 132.00-146.00; low dressing 104.00-119.50. Lean (85-90%) 104.50-122.00

**BRED COWS:** Medium and Large 1-2 5-8 yrs 1030-1375 lbs 2nd/3rd stage 1675.00-2250.00 per head

**COW & CALF PAIRS:** Scarce

**NORTHWEST MISSOURI WEEKLY SUMMARY**

(Tina)

Receipts: 1,003 Week Ago: 549 Year Ago: 766  
 Compared to last week, steers under 550 lbs mostly steady, over 550 lbs 3.00 to 5.00 higher. Heifers mostly steady. Slaughter cows steady to 3.00 higher.

**FEEDER STEERS:**

Medium and Large 1

Pkg 340 lbs.	358.00
400-500 lbs.	310.00-332.50
500-550 lbs.	311.50-318.00
600-700 lbs.	275.00-294.00
64 hd 864 lbs.	250.00

**FEEDER HEIFERS:**

Medium and Large 1

300-350 lbs.	307.00-315.00
400-500 lbs.	294.00-312.00
500-600 lbs.	280.00-295.00
Pkg 654 lbs.	261.50
800-850 lbs.	321.50-238.25

**SLAUGHTER BULLS:** Yield Grade 1-2 1235-2195 lbs 160.00-174.50; high dressing ind 176.00; low dressing 140.00-147.00.

**SLAUGHTER COWS:** Breaking and Boning, (70-85% lean) 114.50-154.00; high dressing 130.00-142.50 low dressing 102.00-125.00. Lean (85-90%) 105.00-124.50

**BRED COWS:** Medium and Large 1-2 2-4 yrs 1003 lbs 2nd stage 2225.00 per head

**COW/CALF PAIRS:** Medium and Large 1-2 2-8 yrs 1000-1050 lbs with baby to 300 lb calves 1550.00-2425.00 per pair

**AFTERNOON NATIONAL SLAUGHTER CATTLE REVIEW**

Thus far for Friday in the Southern Plains negotiated cash trading has been inactive on very light demand. In Nebraska and Western Cornbelt negotiated cash trading has been light on light demand. Not enough purchases in any region for a market trend. The latest established market in all regions was on Thursday. In the Texas Panhandle live FOB purchases traded from 190.00-191.00. In Kansas live FOB purchases traded mostly at 190.00, with a few at 191.00. In Nebraska live FOB purchases traded mostly at 190.00, with a few at 191.00, and dressed delivered purchases traded mostly at 298.00, with a few up to 302.00. In the Western Cornbelt live FOB purchases traded at 190.00 and dressed delivered purchases traded from 298.00-300.00, on a light test.

Negotiated Cash Sales:					
Confirmed:	3,708	Week Ago:	5,447	Year Ago:	15,041
Week to date:	93,819	Week Ago:	67,229	Year Ago:	70,101

Live Basis	Steers	Heifers
Over 80% Choice	189.00-190.00 avg 189.91	190.00-192.00 avg 191.13
65-80% Choice	190.00-190.00 avg 190.00	-
35-65% Choice	-	-
0-35% Choice	-	-
Total All Grades	189.00-190.00 avg 189.84	190.00-192.00 avg 191.13
Dressed Basis		
Over 80% Choice	298.00-300.00 avg 299.81	-
65-80% Choice	-	-
35-65% Choice	-	-
0-35% Choice	-	-
Total All Grades	289.00-300.00 avg 299.81	-

All Beef Type Steers/Heifers	Head	Avg Wt	Price Range	Wtd Avg
Live FOB	3,023	1413.7	184.50-192.00	189.89
Live Del	178	1478.7	191.00-192.50	192.18
Dressed Del	507	914.80	298.00-300.00	299.25
Dressed FOB	-	-	-	-

**WEEKLY COMMODITY FUTURES TRENDS**

Compared to last week, Live Cattle 0.87 to 2.08 higher, Lean Hogs 0.82 to 1.85 higher, Feeder Cattle nearby 0.12 to 1.30 higher, distant 0.80 to 1.35 lower.

Daily Futures Closes

	Mon.	Tues.	Wed.	Thu.	Fri.
Cattle					
Oct	187.00	188.05	187.62	189.30	189.70
Dec	186.82	188.12	187.87	189.25	189.15
Feb	187.62	188.82	188.62	189.95	189.92
Apr	188.55	189.50	189.27	190.35	190.35
Jun	182.10	182.85	182.60	183.30	183.27
Lean Hogs					
Dec	78.27	79.12	80.17	78.65	79.67
Feb	82.25	82.80	83.40	82.80	83.42
Apr	85.92	86.22	86.52	86.25	86.65
May	89.40	89.55	89.60	89.35	89.82
Jun	96.72	96.85	96.75	96.55	96.95
Fdr Cat					
Oct	247.57	249.42	248.57	249.40	249.62
Nov	246.60	248.92	247.22	248.52	248.57
Jan	244.25	246.05	243.82	245.52	245.62
Mar	243.65	244.87	242.45	243.87	243.97
Apr	245.22	246.37	243.77	245.05	244.92
Milk					
Oct	22.75	22.74	22.75	22.72	22.73
Nov	20.89	20.35	20.40	20.27	20.04
Dec	21.08	20.44	20.58	20.40	20.22

**WEEKLY COMMODITY GRAIN FUTURES TRENDS**

Compared to last week, Soybeans 0.13 to 0.18 higher, Wheat 0.02 to 0.03 lower, Corn 0.08 to 0.11 higher, KC Wheat 0.07 to 0.09 lower, Soybean Meal 3.50 to 9.80 lower.

Daily Grain Futures Closes

	Mon.	Tues.	Wed.	Thu.	Fri.
<b>Soybeans</b>					
Nov	981	991 3/4	997 1/2	996 1/4	987 3/4
Jan	989 3/4	1000 1/2	1005	1005	997 1/2
Mar	1002	1012 1/2	1015 3/4	1016	1009
May	1016	1026 3/4	1029	1030 1/4	1024
Jul	1028 1/4	1039	1040 1/4	1041 3/4	1035 3/4
<b>Wheat</b>					
Dec	572 1/4	576	578 1/2	581 1/2	569
Mar	592 1/2	596 1/4	598 1/4	600 3/4	589 1/4
May	603	606 1/2	608 1/4	610 1/2	600
Jul	609 1/2	612 3/4	614	615 1/4	605 3/4
Sep	619	622 1/2	623 1/2	624 1/4	616 1/4
<b>Corn</b>					
Dec	409 1/2	416 1/2	419	421 1/2	415 1/4
Mar	423 1/4	429 1/4	432	435	429 1/2
May	430 1/2	436 3/4	439 3/4	441 3/4	437 1/4
Jul	434 3/4	440 3/4	443 3/4	445 1/4	441 1/2
Sep	430 1/2	435	435 1/2	438	435 1/2
<b>KC Wheat</b>					
Dec	582 1/4	586 1/2	585 1/2	587	572
Mar	597	600 3/4	600 1/4	601 1/4	586 1/4
May	606 1/2	609 3/4	609 3/4	610 1/4	596
Jul	614 1/4	617 1/2	617 1/2	617 1/2	604
Sep	624 1/4	627 3/4	627 3/4	627 1/2	614 1/2
<b>SB Meal</b>					
Oct	318.30	317.70	315.00	310.40	305.80
Dec	315.00	314.80	313.70	310.20	306.60
Jan	314.70	314.40	313.40	311.00	308.70
Mar	316.60	316.30	315.30	313.50	311.90
May	319.50	319.30	318.40	316.80	315.60

**MISSOURI GRAIN WEEKLY TRENDS**

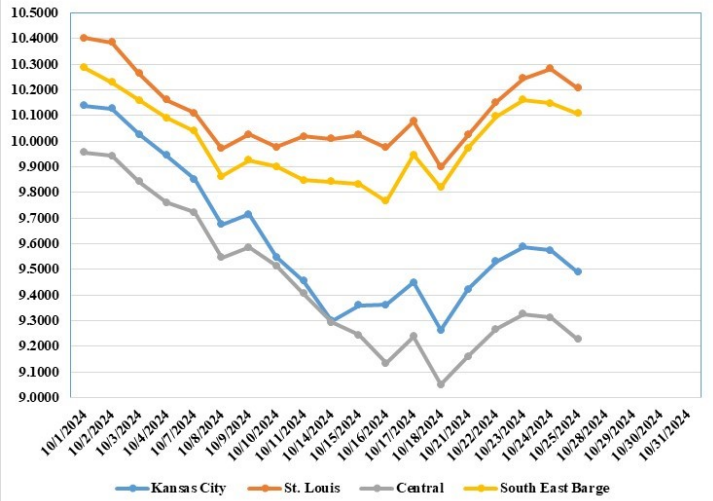
Compared to last week, Soybeans 0.17 to 0.30 higher, Wheat 0.03 higher, Corn 0.04 to 0.21 higher, Sorghum no trend due to lack of bids.

Area	#1 Soybeans	#2 Soft Wheat	#2 Corn	#2 Grain Sorghum
<b>Kansas City</b>				
Friday**	9.05-9.60	---	3.60-3.65	---
Monday	9.16-9.71	---	3.64-3.74	---
Tuesday	9.27-9.82	---	3.72-3.82	---
Wednesday	9.33-9.88	---	3.74-3.84	---
Thursday	9.31-9.86	---	3.77-3.87	---
Friday	9.22-9.77	---	3.70-3.80	---
<b>St. Louis</b>				
Friday**	9.90	4.83-5.33	4.07	4.69
Monday	10.01-10.04	4.82-5.32	4.11-4.15	4.69
Tuesday	10.14-10.17	4.86-5.36	4.17-4.23	4.77
Wednesday	10.23-10.27	4.89-5.39	4.22-4.24	4.77
Thursday	10.28	4.92-5.42	4.17-4.20	4.76
Friday	10.20	4.79-5.29	4.10-4.13	4.70
<b>Central</b>				
Friday**	9.00-9.10	5.23	3.60-3.65	---
Monday	9.11-9.21	5.22	3.64-3.69	---
Tuesday	9.22-9.32	5.26	3.72-3.77	---
Wednesday	9.28-9.38	5.29	3.74-3.79	---
Thursday	9.26-9.36	5.32	3.77-3.82	---
Friday	9.17-9.27	5.19	3.70-3.75	---
<b>S.E. MO</b>				
Friday**	9.75-9.95	---	4.05-4.15	---
Monday	9.85-10.06	---	4.11-4.19	---
Tuesday	10.00-10.17	---	4.20-4.32	---
Wednesday	10.08-10.23	---	4.21-4.34	---
Thursday	10.06-10.21	---	4.22-4.37	---
Friday	10.06-10.15	---	4.11-4.30	---

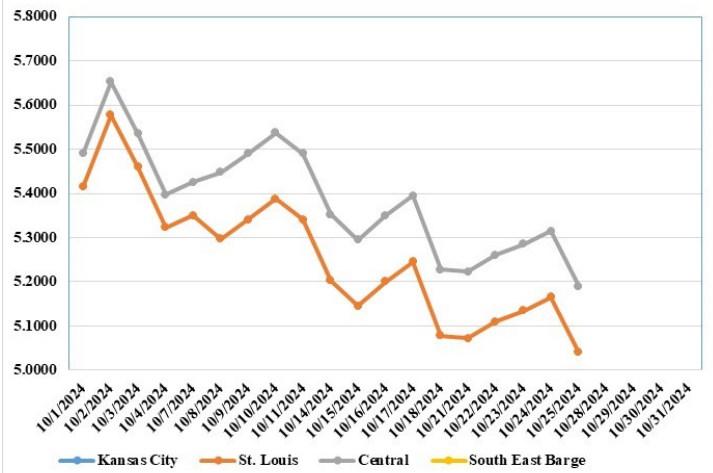
(PRICES PER BUSHEL) \*NEW CROP \*\*PREVIOUS WEEK'S PRICES  
\*Bids calculated using Kansas City, St. Louis, and St. Joseph bids

**MONTHLY GRAIN CROP**

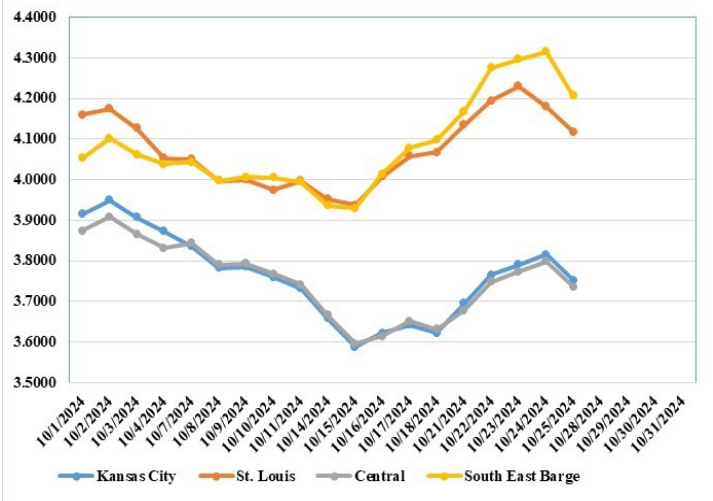
October 2024 Soybean Bids



October 2024 Wheat Bids



October 2024 Corn Bids



\*Axis value ranges may be updated to reflect data points.  
Only dates in which markets are trading and only current cash bids are represented.

**WHOLESALE FEEDSTUFFS PRICES (DOLLARS PER TON-BULK BASIS)**

Area	Soybean Hulls Pellets	Soybean Meal 46.5-48%	Corn Gluten Pellets 21%	Wheat Middlings
Kansas City	n/a	326.90	200.00	148.33
St. Louis	n/a	n/a	197.50	137.50

**MISSOURI CROP PROGRESS AND CONDITION**

There were 7.0 days suitable for fieldwork in the week ending October 20, 2024. Statewide, the average temperature was 52.6 degrees, 3.4 degrees below normal. Precipitation averaged 0.00 inches, 0.86 inches below normal. Topsoil moisture supply was rated 24 percent very short, 45 percent short, and 31 percent adequate. Subsoil moisture supply was rated 19 percent very short, 42 percent short, and 39 percent adequate. Corn harvested for grain reached 80 percent, compared to the 5-year average of 69 percent. Soybeans dropping leaves reached 95 percent, compared to the 5-year average of 93 percent. Soybeans harvested reached 61 percent, compared to the 5-year average of 43 percent. Soybean condition was rated 2 percent very poor, 7 percent poor, 22 percent fair, 57 percent good, and 12 percent excellent. Cotton harvested reached 51 percent, compared to the 5-year average of 41 percent. Cotton condition was rated 3 percent very poor, 6 percent poor, 22 percent fair, and 69 percent good. Rice harvested reached 96 percent, compared to the 5-year average of 88 percent. Winter wheat planted reached 45 percent, compared to the 5-year average of 42 percent. Winter wheat emerged reached 15 percent, compared to the 5-year average of 17 percent.

	Week Ending			
	10/20/24	10/13/24	10/20/23	5 yr avg
Corn Harvested	80	73	72	69
Soybeans Dropping leaves	95	91	97	93
Soybeans Harvested	61	41	57	43
Cotton Harvested	51	38	61	41
Rice harvested	96	92	92	88
Winter Wheat Planted	45	22	45	42
Winter Wheat Emerged	15	4	13	17

**MISSOURI WEEKLY HAY SUMMARY**

Dryness continues to worsen across the state. Just over 94 percent of the state is now highlighted on the drought monitor with near 6 percent (all the southwest corner) listed as D3 or extreme drought. Reports of some livestock owners now having to haul water as ponds have dried up in some locations. Much of the state has week nearly a month now without any measurable rainfall and fall pasture growth just never happened. A surplus of hay baled in the first half of the year means there is currently plenty of feed available, but it is still to be seen if that supply will last all season with the early start to feeding. Several producers are already looking at other feed sources be it corn or some by products in order to stretch the hay to a more traditional feeding date. Thus far there hasn't seemed to be an uptick in eagerness to buy hay but that could change quickly in the coming weeks as feeding occurs if farmers decide that what looked to be a surplus might not be enough any longer. Hay prices are steady to weak. The supply of hay is moderate to heavy, and demand is light. The Missouri Department of Agriculture has a hay directory at <https://apps.mda.mo.gov/haydirectory> or visit the University of Missouri Extension feed stuff finder at <https://feedstufffinder.org>

- Alfalfa - Supreme 250.00-300.00, small square 8.00-12.00 per bale
- Alfalfa - Premium 200.00-250.00
- Alfalfa - Good 150.00-200.00, small square 5.00-10.00 per bale
- Alfalfa - Fair 125.00-150.00
- Mixed grass - Good/Premium 150.00-200.00
- Mixed grass-Fair/Good 100.00-150.00, small square 3.50-8.00 per bale
- Mixed grass - Fair 40.00-65.00 per large round bale
- Corn Stalks - 35.00 per large round bale
- Wheat straw - 4.00-7.00 per small square bale

Please Note: The above volumes (tonnage, acres, and bales) listed are for confirmed trades only, it does not include estimated volume (tonnage) for bids or offers to the trade. List your hay for sale at: [Hay Listing Online Form](#). Explanation of Hay Quality Guidelines: [Hay Quality Designation Guidelines](#). Glossary of Terms: [Livestock, Poultry, & Grain Hay Terms](#)

**MISSOURI WEEKLY SHEEP/GOAT AUCTION SUMMARY**

Receipts: 3,498 Week Ago: 2,254 Last Year: 3,276

**SHEEP:** Feeder lambs Medium and Large 1-2 pkg 49 lbs 180.00. Small and Medium 1-2 hair 20-50 lbs 232.00-310.00. Slaughter lambs Choice and Prime 1-3 w/s pkg 66 lbs 232.00; pkg 145 lbs 103.00. Good 1-2 w/s pkg 62 lbs 150.00. Choice and Prime 1-3 hair 50-70 lbs 235.00-275.00; 70-80 lbs 210.00-245.00; 80-90 lbs 185.00-215.00; 90-100 lbs 150.00-187.00; pkg 120 lbs 142.00. Choice 1-3 hair 50-70 lbs 202.50-235.00; 70-80 lbs 176.00-210.00; pkg 99 lbs 144.00. Good 1-2 pkg 67 lbs 180.00/ 78 lbs 130.00-135.00. Slaughter ewes Utility and Good 1-3 200-250 lbs 69.00-90.00. Utility and Good 1-3 pkg 150 lbs 100.00/hd. Cull and Utility 1-2 100-145 lbs 47.50-70.00. Good 1-2 hair pkg 95 lbs 120.00/hd. Good 2-3 hair 85-155 lbs 90.00-100.00. Good 2-3 hair 80-125 lbs 112.50-120.00/hd. Utility and Good 1-3 hair 90-135 lbs 70.00-100.00. Utility and Good 1-3 hair 80-135 lbs 80.00-112.50/hd. Cull and Utility 1-2 75-120 lbs 62.50-65.00. Slaughter bucks 1-2 105-200 lbs 102.50-110.00. Hair bucks 1-2 115-155 lbs 87.50-130.00. Replacement ewes Small and Medium 1-2 hair 2-4 yrs 88 lbs exp 150.00; 100-110 lbs exp 127.00-130.00. Small and Medium hair 1-2 yrs 120 lbs exp 170.00/hd; 90 lbs fall 120.00/hd; 2-4 yrs 138 lbs exp 140.00/hd; 140 lbs fall 210.00/hd. Families Small and Medium 1-2 4-6 yrs 105 lbs exp with baby lambs 210.00/ fam. **GOATS:** Feeder kids Selection 1 20-50 lbs 287.00-327.00, replacements 330.00-337.00. Selection 2 30-40 lbs 225.00-232.50; 40-50 lbs 215.00-282.50, pygmies 205.00. Selection 3 pkg 22 lbs pygmies 90.00; pkg 33 lbs 182.00; 30-40 lbs pygmies 87.00-180.00; pkg 43 lbs 200.00. Slaughter kids Selection 1 50-70 lbs 270.00-305.00. Selection2 50-60 lbs 250.00-280.00; 60-70 lbs 230.00-282.50; 70-80 lbs 200.00-262.50; 80-90 lbs 175.00-205.00. Selection 3 pkg 58 lbs pygmies 100.00. Slaughter nannies/does Selection 1-2 pkg 58 lbs pygmies 82.50; 60-70 lbs pygmies 107.00-129.00; 85-160 lbs 80.00-127.00. Selection 1-2 pkg 85 lbs 130.00/ hd; 105-130 lbs 75.00-110.00/ hd. Slaughter bucks/billies Selection 1-2 70-80 lbs 177.00-215.00; 90-100 lbs 112.00-170.00; 110-145 lbs 125.00-180.00. Wethers Selection 1-2 120-135 lbs 130.00-237.50. Wether kids Selection 2 27 hd 64 lbs 280.00. Replacement nannies/does Selection 1-2 2-4 yrs 75-90 lbs 147.00-200.00. Selection 1-2 2-4 yrs 115-150 lbs exp 140.00-200.00/hd; 115-135 lbs exp 128.00-135.00/hd.

Explanatory Notes: Stage - Represents estimated lambing/kidding period (Open, Exp=exposed, Bred, Fall = Sep-Nov, Win = Dec-Feb, Spr = Mar-May, Sum=Jun-Aug; w/s = woolled and shorn; /hd= per head; /fam=per family All price CWT unless otherwise noted.

**MISSOURI DROUGHT MONITOR**

Date	None	D0	D1	D2	D3	D4
10/22/24	5.85	28.97	39.73	19.71	5.74	0
10/15/24	22.95	37.68	21.30	13.57	4.50	0
10/24/24	13.76	19.56	33.22	23.16	10.30	0

Reflects percentage of Missouri impacted by drought. D0 Abnormally Dry; D1 Moderate Drought; D2 Severe Drought; D3 Extreme Drought; D4 Exceptional Drought

**NATIONAL DIRECT DELIVERED FEEDER PIG REPORT**

10/25/24 Receipts: 129,612 Week ago: 110,250 Year Ago: 115,593 Early weaned pigs steady and feeder pigs 3.00 lower. Cash 64,675 head 36.00-54.00, weighted average 45.52 Formula 44,537 head 42.19-56.75, weighted average 49.15 Feeder pigs 40 pounds basis: Cash 20,400 head 51.50-64.00, weighted average 58.29

**NATIONAL DAILY DIRECT PRIOR DAY HOG REPORTS FOR 10/25/24**

**BARROWS AND GILTS (Carcass Basis):** 2.485 head Base Carcass Price 74.00-79.50, 5 day rolling average 76.30

**SOWS (Live Basis):** 6,465 head 300-500 lbs. 26.00-76.50 Over 500 lbs. 52.00-79.50

**MISSOURI WEEKLY DIRECT SLAUGHTER CATTLE REPORT 10/25/24**

Weekly Receipts: 360 Week ago: 240 Year ago: 360 Trading as of Friday morning, flat dressed sales 2.00 higher and dressed grid sales inactive.

**LIVE STEERS & HEIFERS:** No sales reported **DRESSED STEERS & HEIFERS:** Thu 9 loads flat 298.00

**GRADE AND EIGHT (Grid):** No sales reported

Click here for the current [National Crop Progress](#)  
Click here for the current [Missouri Crop Progress](#)  
The current hay directory can be found at: [Hay Directory](#).