

Weekly Market Summary

Published by:
Missouri Department of Agriculture
Ag Business Development Division
Market News Program



Chris Chinn, Director
 Jill Wood, Division Director
 Tony Hancock, Editor
[agmarketnews.mo.gov](http://www.ams.usda.gov/marketnews.htm)
<http://www.ams.usda.gov/marketnews.htm>

Michael L. Parson, Governor

Volume XLIV, Number 44 ♦ P.O. Box 630, Jefferson City, MO 65102 ♦ (573) 751-4211 ♦ Mon, Nov 4, 2024

MISSOURI WEEKLY FEEDER CATTLE WEIGHTED AVERAGE REPORT

Feeder Cattle Receipts: 24,523 Week ago: 25,608 Year ago: 17,719
 Steers and Heifers Medium and Large 1—Weighted average weights and prices

STEERS: Medium and Large 1

330 lbs. 337.46	522 lbs. 297.76	729 lbs. 257.48	908 lbs. 240.96
375 lbs. 335.28	571 lbs. 288.19	779 lbs. 255.08	975 lbs. 227.50
433 lbs. 322.15	626 lbs. 272.96	822 lbs. 251.56	
477 lbs. 315.46	669 lbs. 263.46	869 lbs. 250.61	

HEIFERS: Medium and Large 1

328 lbs. 304.78	524 lbs. 269.65	721 lbs. 248.07	913 lbs. 218.53
376 lbs. 289.99	571 lbs. 261.67	767 lbs. 232.96	969 lbs. 200.19
424 lbs. 291.23	621 lbs. 256.23	817 lbs. 232.96	
484 lbs. 277.78	678 lbs. 253.09	870 lbs. 221.42	

MISSOURI STEER (HEIFER) STOCKER FORMULA 11/04/2024

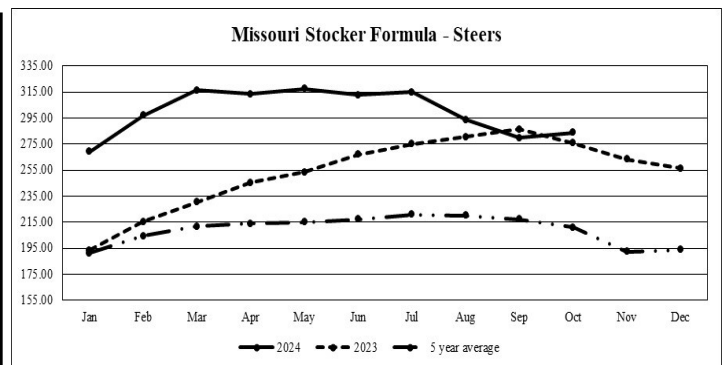
Monday's Missouri Stocker formula consists of **4952 (4480)** head with a weighted average weight of **557.23 (540.09)** lbs. and a price value of **280.03 (256.91)**, 2.47 lower (1.35 lower) than last week.

This a rolling seven day calculated weighted value which combines all Feeder Steers reported by MDA/USDA Market News Service weighing from 400-649 lbs. in the Medium and Large 1 and Medium and Large 1-2 frame and muscle classifications, including all comment cattle except Brahman X. Heifer values are in parentheses.

MISSOURI WEEKLY CATTLE AUCTION SUMMARY

Total Receipts: 29,336 Week Ago: 29,685 Year Ago: 23,973

Compared to last week, feeder steers under 750 lbs. and heifers under 650 lbs. were uneven but mostly steady to 5.00 lower. Heavier weight steers and heifers sold steady to 2.00 higher. The calf market as most sectors of the cattle industry found pressure this week and trended lower, however condition and health programs continue to mean everything and those with weaning and shots still finding some premiums. The big news this week was much needed rains that fell mid to late week and are expected to continue into the upcoming week. Although there has been some frost the wheat crop and even some grasses like the fescue should still see some benefits as temperatures are still plenty warm enough for some growth. Perhaps even more importantly though is that stock water supplies will see some replenishment. A few stick-out sales this week included a lot of 10 head of 450 lb. steers at Mo-Kan Livestock Market which sold for 347.50. Lolli Brothers Livestock Market sold 37 head of 580 lb. steers at 305.00. Windsor Livestock Auction sold a load of 748 lb. steers for 275.75. A load of steers at Callaway Livestock Center sold early in the week for 253.00. Tina Livestock Auction sold a load of 911 lb. steers for 251.25. A few stick out loads of heifers this week included a load of 595 lb. heifers at Windsor Livestock Auction which sold for 284.75. Tina Livestock Auction had a load of 625 lb. heifers that sold for 280.00 as well as a load of 744 lb. heifer which sold for 256.00. Boxed beef cutouts were lower for the week, Choice closed on Friday at 316.34, down 5.90 and Select closed at 285.03, down 10.06 compared to last Friday. Negotiated feedlot sales as of the Friday afternoon report total 86K head with much of the trade taking place on Wednesday and Thursday this week. After seventh consecutive weeks of higher prices markets were steady to lower this week. Live sales were reported mostly from 189.00-190.00, dressed sales from mostly from 296.00-298.00. The Missouri Stocker formula consists of 4592 head with a weighted average weight of 557.23 lbs. and a price value of 280.03, 2.47 lower than a week ago. The steer/heifer spread is 23.12 per cwt.

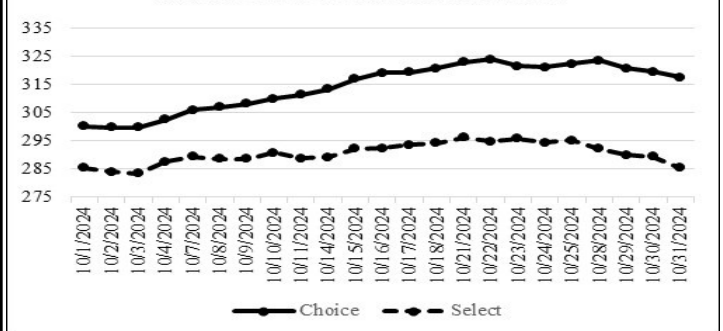


*Graph is updated the first Monday of each month. Axis value ranges may be updated to reflect data points.

NATIONAL BOXED BEEF CUTOFF/BOXED BEEF CUTS

DATE	CHOICE	SELECT	TOTAL LOADS
10/28	323.50	292.18	156
10/29	320.61	289.96	150
10/30	319.44	289.32	154
10/31	317.60	285.37	139
11/1	316.34	285.03	95
5 Day Simple Average	319.50	288.37	

Boxed Beef Cuts October 2024



*Axis value ranges may be updated to reflect data points.

WEEKLY LIVESTOCK SLAUGHTER 11/02/24

	CATTLE	HOGS	SHEEP
Week to Date:	615,000	2,653,000	33,000
Last Week:	623,000	2,593,000	34,000
Last Year:	636,337	2,665,81	38,333

SOUTHWEST MISSOURI WEEKLY SUMMARY

(Joplin and Springfield)

Receipts: 9,849 Week ago: 10,463 Year Ago: 4,330
Compared to last week, steers and heifers steady to 7.00 higher, except heifers early week 3.00 lower to 4.00 higher. Slaughter cows steady to 2.00 lower. Slaughter bulls steady to 4.00 higher.

FEEDER STEERS:
Medium and Large 1

Table with 2 columns: Weight (300-400 lbs to 900-1000 lbs) and Price (320.00-330.00 to 227.50-241.50)

FEEDER HEIFERS:
Medium and Large 1

Table with 2 columns: Weight (400-500 lbs to 950-1000 lbs) and Price (266.00-310.00 to 196.00-207.00)

FEEDER HOLSTEIN STEERS
Large 3

Scarce Scarce

SLAUGHTER COWS: Breaking and Boning (70-85% lean) 108.00-126.50; high dressing 123.00-135.00; low dressing 97.00-116.00. Lean (85-90%) 105.00-118.50

SLAUGHTER BULLS: Yield Grade 1-2 1240-2510 lbs. 145.00-168.00; high dressing 162.50-179.00; low dressing 131.50-148.50

BRED COWS: Medium and Large 1 2-8 yrs 1110-1425 lbs 2nd/3rd stage 1900.00-2700.00. Medium and Large 1-2 2-8 yrs 885-1540 lbs 2nd/3rd stage 1500.00-2000.00, 1st stage 1400.00-1850.00 per head

BRED HEIFERS: Medium and Large 1-2 <2 yrs 796 lbs 1st stage 1670.00; 2-4 yrs 870-952 lbs 2nd/3rd stage 1550.00-1875.00 per head

COW & CALF PAIRS: Medium and Large 1-2 2-8 yrs 1065-1650 lb with 150 to >300 lb calves 1900.00-2700.00; >8 yrs 1240 lbs with 150-300 lb calves 1800.00 per pair

SOUTH CENTRAL MISSOURI WEEKLY SUMMARY

(West Plains, Phillipsburg)

Receipts: 5,144 Week ago: 3,989 Year Ago: 3,793
Compared to last week, early week steers and heifers steady to 5.00 lower, late week steers 2.00 to 8.00 lower and heifers uneven from 4.00 lower to 3.00 higher. Slaughter cows 2.00 to 4.00 lower. Slaughter bulls steady to 4.00 lower.

FEEDER STEERS:
Medium and Large 1

Table with 2 columns: Weight (300-400 lbs to 800-900 lbs) and Price (320.00-342.50 to 240.00-248.50)

FEEDER HEIFERS:
Medium and Large 1

Table with 2 columns: Weight (300-400 lbs to 800-850 lbs) and Price (267.00-298.00 to 220.00-237.00)

FEEDER HOLSTEIN STEERS:
Large 3

Scarce Scarce

SLAUGHTER COWS: Breaking and Boning (70-85% lean) 107.50-126.00, high dressing 116.50-145.00; low dressing 92.00-115.00. Lean (85-90%) 102.50-117.00

SLAUGHTER BULLS: Yield Grade 1-2 1180-2575 lbs. 140.50-162.50; high dressing 155.00-179.00; low dressing 126.00-145.00

BRED COWS: Medium and Large 1 couple 2-8 yrs 1275-1525 lbs 2nd/3rd stage 2100.00-2275.00. Medium and Large 1-2 2-8 yrs 1140-1480 lbs 2nd/3rd stage 1550.00-2600.00; >8 yrs 1246-1275 lbs 2nd/3rd stage 1225.00-1750.00 per head

COW & CALF PAIRS: Medium and Large 1-2 2-8 yrs 1125-1175 lbs with baby to 300 lb calves 2350.00-2650.00 per pair

WEST CENTRAL MISSOURI WEEKLY SUMMARY

(Kingsville, Windsor, Butler)

Receipts: 5,012 Week ago: 3,589 Year ago: 3,822
Compared to last week, bulk of cattle steady to 5.00 higher, spots where higher health risk calves up to 10.00 lower. Slaughter cows steady.

FEEDER STEERS:
Medium and Large 1

Table with 2 columns: Weight (400-500 lbs to 800-900 lbs) and Price (282.00-347.50 to 236.50-261.00)

FEEDER HEIFERS:
Medium and Large 1

Table with 2 columns: Weight (400-500 lbs to 800-850 lbs) and Price (275.00-319.00 to 230.00-236.00)

SLAUGHTER BULLS: Yield Grade 1-2 1335-2170 lbs 143.00-158.00; high dressing 160.00-170.00; low dressing 127.50-142.00

SLAUGHTER COWS: Breaking and Boning (70-85% lean) 108.00-126.00, high dressing 120.00-131.00; low dressing 94.00-111.50. Lean (85-90%) 94.00-111.50

BRED COWS: Scarce

COW & CALF PAIRS: Scarce

NORTHEAST MISSOURI WEEKLY SUMMARY

(Bowling Green, Kingdom City, Palmyra)

Receipts: 3,233 Week ago: 4,194 Year ago: 5,155
Compared to last week, steers steady to 7.00 higher. Heifers under 600 lbs steady to firm undertone on a light test, over 600 lbs weak to 5.00 lower. Slaughter cows early week 5.00 to 10.00 lower, mid to late week steady to firm.

FEEDER STEERS:
Medium and Large 1

Table with 2 columns: Weight (400-500 lbs to 800-900 lbs) and Price (310.00-338.00 to 247.50-254.00)

FEEDER HEIFERS:
Medium and Large 1

Table with 2 columns: Weight (400-500 lbs to 700-750 lbs) and Price (271.00-291.00 to 235.00-252.00)

SLAUGHTER BULLS: Yield Grade 1-2 1300-2270 lbs 146.00-160.00; high dressing 160.00-165.50; low dressing 118.00-147.00

SLAUGHTER COWS: Breaking and Boning, (70-85% lean) 116.00-127.00; high dressing 124.00-136.00; low dressing 118.00-118.00. Lean (85-90%) 103.00-117.00

SLAUGHTER STEERS: Choice 2 -3 185.00-190.00. Select and Choice 1-3 184.00. Select 1-2 175.00-179.00.

SLAUGHTER HEIFERS: Choice 2-3 186.00-190.00

BRED COWS: Scarce

COW/CALF PAIRS: Scarce

NORTH CENTRAL MISSOURI WEEKLY SUMMARY

(Macon, Unionville, Green City, New Cambria)

Receipts: 1,970 Week ago: 2,714 Year ago: 3,813
Compared to last week, steers and heifers firm to 5.00 higher, except some yearling heifers 5.00 lower early week. Slaughter cows steady to 3.00 lower.

*Some sale barns on a bi-weekly schedule and may not have a sale each week.

FEEDER STEERS:
Medium and Large 1

Table with 2 columns: Weight (400-500 lbs to 800-900 lbs) and Price (317.50-335.00 to 229.50-241.50)

FEEDER HEIFERS:
Medium and Large 1

Table with 2 columns: Weight (400-500 lbs to 700-800 lbs) and Price (287.00-322.50 to 235.75-256.35)

SLAUGHTER BULLS: Yield Grade 1-2 1235-1980 lbs 145.00-168.50; couple high dressing 160.00-163.00; low dressing 130.00-150.00

SLAUGHTER COWS: Breaking and Boning (70-85% lean) 107.00-132.00; high dressing 128.00-138.00; low dressing 105.00-121.00. Lean (85-90%) 106.00-117.00

BRED COWS: Scarce

BRED HEIFERS: Scarce

SOUTHEAST MISSOURI WEEKLY SUMMARY

(Jackson and Farmington)

Receipts: 1,392 Week ago: 1,367 Year ago: 1,430
 Compared to last week, steers and heifers steady to 14.00 higher.
 Slaughter cows and bulls steady to 2.00 higher.

FEEDER STEERS:
 Medium and Large 1

300-400 lbs.	300.00-340.00
400-500 lbs.	275.00-322.00
500-600 lbs.	263.00-294.00
600-700 lbs.	240.00-275.00
700-800 lbs.	230.00-256.00
Pkg 879 lbs.	231.00

FEEDER HEIFERS:
 Medium and Large 1

300-400 lbs.	260.00-300.00
400-500 lbs.	240.00-287.00
500-600 lbs.	230.00-267.00
600-700 lbs.	220.00-250.00
700-750 lbs.	218.00-230.00

SLAUGHTER BULLS: Yield
 Grade 1-2 1230-2370 lbs 130.00-
 144.50, high dressing 147.00-
 160.50

SLAUGHTER COWS: Breaking
 and Boning (75-85% lean) 102.00-
 134.00; high dressing 114.00-
 134.00. Lean (85-90% lean) 80.00-
 102.00

BRED COWS: Medium and Large
 2 2-8 yrs 1005-1668 lbs 2nd/3rd
 stage 1550.00-2800.00; >8 yrs
 1070-1560 lbs 2nd/3rd stage
 1250.00-1800.00 per head

COW & CALF PAIRS: Medium
 and Large 2 2-8 yrs 1000-1550 lbs
 with baby to 300 lb calves 1750.00
 -3025.00 per pair

EAST CENTRAL MISSOURI WEEKLY SUMMARY

(Cuba, Vienna)

Receipts: 1,408 Week Ago: 2,043 Year ago: 1,207
 Compared to last week, steers steady to 4.00 higher. Heifers 400-500
 lbs 5.00 to 10.00 lower, other weights steady to 2.00 higher. Slaughter
 cows 1.00 to 4.00 lower.

FEEDER STEERS:
 Medium and Large 1

450-500 lbs.	307.00-320.00
500-600 lbs.	282.00-306.00
600-700 lbs.	261.00-273.00
700-800 lbs.	244.00-254.00

FEEDER HEIFERS:
 Medium and Large 1

300-350 lbs.	312.00-319.00
Pkg 496 lbs.	276.00
500-600 lbs.	240.00-279.00
650-700 lbs.	238.0-239.00
Pkg 905 lbs.	204.50
Pkg 1034 lbs.	187.50

SLAUGHTER BULLS: Yield
 Grade 1-2 1345-2110 lbs 146.00-
 162.00; high dressing 164.00-
 175.00; low dressing 118.00-
 144.00

SLAUGHTER COWS: Breaking
 and Boning, (70-85% lean) 113.00-
 127.00; high dressing 122.00-
 138.00; low dressing 108.00-
 114.50. Lean (85-90%) 100.00-
 117.00

BRED COWS: Medium and
 Large 1-2 8 yrs 1075-1330 lbs
 1st to 3rd stage 1825.00-2585.00
 per head

COW & CALF PAIRS: Scarce

NORTHWEST MISSOURI WEEKLY SUMMARY

(Tina)

Receipts: 1,328 Week Ago: 1,003 Year Ago: 422
 Compared to last week, steers 3.00 to 7.00 higher and heifers steady to
 4.00 higher. Slaughter cows and bulls steady to 3.00 lower.

FEEDER STEERS:
 Medium and Large 1

Pkg 350 lbs.	345.00	300-400 lbs.	312.50-347.00
400-500 lbs.	311.00-333.50	400-500 lbs.	298.00-315.00
500-550 lbs.	300.00-317.00	500-550 lbs.	284.00-288.50
600-700 lbs.	277.00-290.00	600-700 lbs.	263.00-280.50
63 hd 911 lbs.	251.25	700-800 lbs.	241.00-256.00
		15 hd 916 lbs.	225.00

FEEDER HEIFERS:
 Medium and Large 1

SLAUGHTER BULLS:
 Yield Grade 1-2 1330-1870 lbs
 161.50-175.50; high dressing ind
 178.50; low dressing 146.00-
 153.50.

SLAUGHTER COWS: Breaking
 and Boning, (70-85% lean) 121.00-
 134.50; high dressing 131.50-
 139.00 low dressing 89.00-119.00.
 Lean (85-90%) 108.00-121.50

BRED COWS: Medium and
 Large 1-2

COW/CALF PAIRS: Scarce

AFTERNOON NATIONAL SLAUGHTER CATTLE REVIEW

Thus far for Friday negotiated cash trade in the Southern Plains, Nebraska
 and the Western Cornbelt has been inactive on very light demand. Not
 enough purchases in any region for a market trend. Wednesday was the
 last fully established live FOB purchase market in these regions at 190.00.
 In Nebraska and the Western Cornbelt the last reported dressed delivered
 purchase market was on Wednesday, with Nebraska from 296.00-298.00
 and the Western Cornbelt at 298.00.

Negotiated Cash Sales:

Confirmed:	2,465	Week Ago:	3,708	Year Ago:	2,631
Week to date:	86,340	Week Ago:	93,756	Year Ago:	27,770

<u>Live Basis</u>	<u>Steers</u>	<u>Heifers</u>
Over 80% Choice	-	190.00
65-80% Choice	190.00	190.00
35-65% Choice	-	-
0-35% Choice	-	-
Total All Grades	190.00	190.00
Dressed Basis		
Over 80% Choice	296.00	296.00
65-80% Choice	-	-
35-65% Choice	-	-
0-35% Choice	-	-
Total All Grades	296.00	296.00

<u>All Beef Type Steers/Heifers</u>	<u>Head</u>	<u>Avg Wt</u>	<u>Price Range</u>	<u>Wtd Avg</u>
Live FOB	1,276	1,382.7	187.00-191.00	189.69
Live Del	104	1,516.6	192.00-194.00	192.67
Dressed Del	1,001	909.3	296.00	296.00
Dressed FOB	-	-	-	-

WEEKLY COMMODITY FUTURES TRENDS

Compared to last week, Live Cattle 1.97 to 3.23 lower, Lean Hogs 1.37
 to 4.40 higher, Feeder Cattle 1.70 to 2.92 lower.

Daily Futures Closes

	Mon.	Tues.	Wed.	Thu.	Fri.
Cattle					
Oct	190.17	189.30	188.40	193.00	—
Dec	189.27	187.95	186.42	186.30	185.92
Feb	190.10	188.62	187.05	186.77	186.90
Apr	190.70	189.10	187.60	187.35	187.70
Jun	183.65	182.32	180.92	181.02	181.30
Lean Hogs					
Dec	80.62	82.82	84.37	83.80	84.07
Feb	84.22	85.37	85.70	85.20	86.02
Apr	87.12	87.77	88.05	88.10	88.90
May	90.17	90.77	91.07	91.10	91.70
Jun	97.17	97.45	97.60	97.65	98.32
Fdr Cat					
Oct	250.07	250.02	250.95	251.97	—
Nov	249.20	246.60	245.50	245.37	246.87
Jan	246.95	244.02	241.97	241.32	243.20
Mar	245.55	242.42	239.85	239.07	241.15
Apr	246.35	243.62	240.97	240.10	242.00
Milk					
Oct	22.72	22.73	22.85	—	—
Nov	20.13	20.22	20.27	20.12	20.25
Dec	20.10	19.94	19.67	19.46	19.68

WEEKLY COMMODITY GRAIN FUTURES TRENDS

Compared to last week, Soybeans uneven with nearby 0.01 to 0.06 lower and May/June 0.01 to 0.02 higher, Wheat 0.01 to 0.02 lower except Sep 0.01 higher, Corn steady to 0.01 lower, KC Wheat 0.04 to 0.06 lower, Soybean Meal 6.70 to 10.05 lower.

Daily Grain Futures Closes

	Mon.	Tues.	Wed.	Thu.	Fri.
Soybeans					
Nov	974	965 1/4	976 1/2	982 1/2	982 1/2
Jan	986	979	991 1/4	994 1/2	993 3/4
Mar	998 1/4	993 1/2	1005 1/2	1009 1/2	1008 1/4
May	1013 3/4	1009 3/4	1021 1/4	1026	1025
Jul	1025 1/2	1022	1033	1038 3/4	1038
Wheat					
Dec	558 3/4	570 1/2	573 1/4	570 1/2	568
Mar	579 1/2	590 1/2	593 1/2	590 1/4	587 3/4
May	591	601 3/4	605 1/4	601 1/2	599 1/4
Jul	597 3/4	607 1/4	611 1/2	607	605 3/4
Sep	609	617 1/2	623 1/4	618 1/2	617 3/4
Corn					
Dec	410 3/4	413 3/4	411 1/2	410 3/4	414 1/2
Mar	424 3/4	427	425 1/2	426	429 1/4
May	433 1/4	435	433 3/4	434 1/2	437 1/4
Jul	437 3/4	439	438 1/2	439 3/4	442 1/4
Sep	433 1/4	434 1/4	434 3/4	435 1/4	436
KC Wheat					
Dec	561 1/2	574 1/4	575 3/4	569 1/4	566 3/4
Mar	575 1/2	588 1/2	589 3/4	583	580 1/4
May	585 1/4	598 1/4	600 1/4	593 1/2	590 3/4
Jul	593 1/2	606 1/4	609	602 1/2	600 1/4
Sep	604 1/4	616 3/4	620	613 1/2	611 1/2
SB Meal					
Dec	304.80	301.80	301.60	299.50	295.30
Jan	305.00	303.00	302.90	301.30	297.10
Mar	307.00	305.70	305.50	304.00	300.20
May	310.40	309.40	309.40	308.00	304.30
Jul	314.30	313.50	313.60	312.40	308.90

MISSOURI GRAIN WEEKLY TRENDS

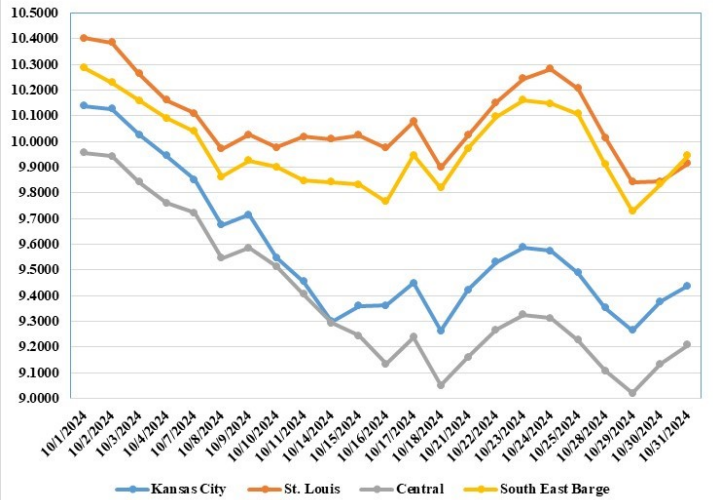
Compared to last week, Soybeans 0.15 lower to 0.22 higher, Wheat 0.54 to 0.89 higher, Corn steady to 0.14 higher, Sorghum no trend due to lack of bids.

Area	#1 Soybeans	#2 Soft Wheat	#2 Corn	#2 Grain Sorghum
Kansas City				
Friday**	9.22-9.77	—	3.70-3.80	—
Monday	9.09-9.64	—	3.66-3.76	—
Tuesday	9.00-9.55	—	3.69-3.79	—
Wednesday	9.12-9.67	—	3.67-3.77	—
Thursday	9.18-9.73	—	3.66-3.76	—
Friday	9.18-9.99	—	3.70-3.95	—
St. Louis				
Friday**	10.20	4.79-5.29	4.10-4.13	4.70
Monday	9.97-10.06	4.69-5.19	4.06	4.61
Tuesday	9.77-9.91	4.81-5.31	4.09	4.64
Wednesday	9.81-9.89	4.83-5.33	4.05-4.06	4.62
Thursday	9.87-9.97	4.81-5.31	4.06-4.13	4.61
Friday	10.05-10.08	5.68-5.83	4.22-4.25	4.65
Central				
Friday**	9.17-9.27	5.19	3.70-3.75	—
Monday	9.04-9.14	5.09	3.66-3.71	—
Tuesday	8.95-9.05	5.21	3.69-3.74	—
Wednesday	9.07-9.17	5.23	3.67-3.72	—
Thursday	9.11-9.30	5.21	3.66-3.71	—
Friday	9.19-9.29	5.18	3.70-3.75	—
S.E. MO				
Friday**	10.06-10.15	—	4.11-4.30	—
Monday	9.79-10.02	—	3.96-4.26	—
Tuesday	9.65-9.80	—	4.02-4.29	—
Wednesday	9.77-9.92	—	3.94-4.27	—
Thursday	9.93-9.97	—	4.11-4.26	—
Friday	9.93-9.94	—	4.15-4.32	—

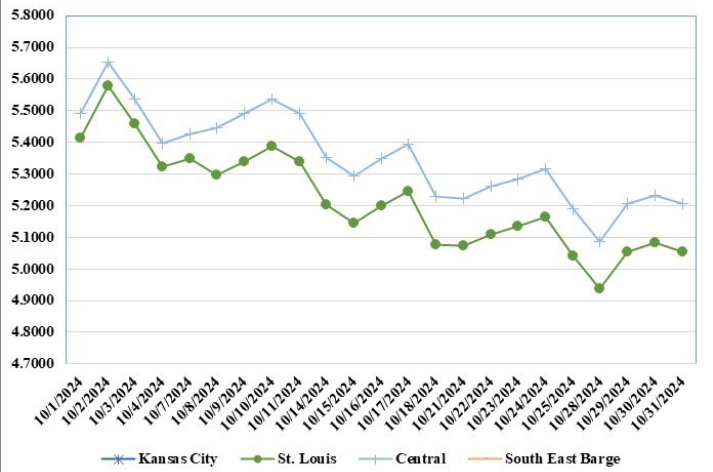
(PRICES PER BUSHEL) *NEW CROP **PREVIOUS WEEK'S PRICES
*Bids calculated using Kansas City, St. Louis, and St. Joseph bids

MONTHLY GRAIN CROP

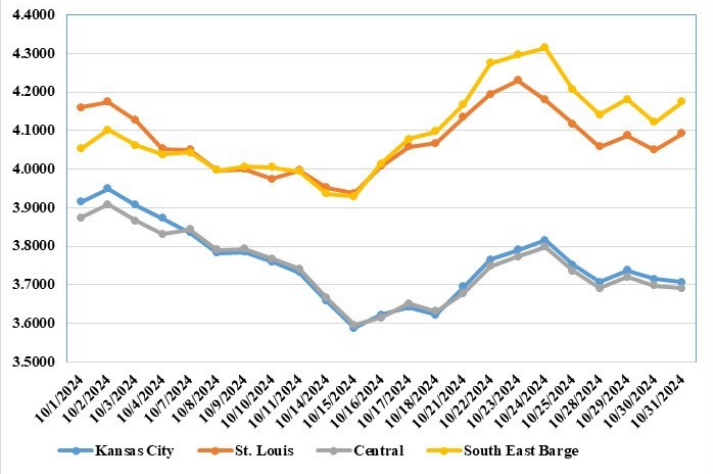
October 2024 Soybean Bids



October 2024 Wheat Bids



October 2024 Corn Bids



*Axis value ranges may be updated to reflect data points.
Only dates in which markets are trading and only current cash bids are represented.

**WHOLESALE FEEDSTUFFS PRICES
(DOLLARS PER TON-BULK BASIS)**

Area	Soybean Hulls Pellets	Soybean Meal 46.5-48%	Corn Gluten Pellets 21%	Wheat Middlings
Kansas City	n/a	316.00	200.00	148.33
St. Louis	n/a	n/a	197.50	150.00

MISSOURI CROP PROGRESS AND CONDITION

There were 6.6 days suitable for fieldwork in the week ending October 27, 2024. Statewide, the average temperature was 60.0 degrees, 5.6 degrees above normal. Precipitation averaged 0.24 inches, 0.43 inches below normal. Topsoil moisture supply was rated 29 percent very short, 41 percent short, and 30 percent adequate. Subsoil moisture supply was rated 23 percent very short, 42 percent short, and 35 percent adequate. Corn harvested for grain reached 86 percent, compared to the 5-year average of 77 percent. Soybeans harvested reached 75 percent, compared to the 5-year average of 57 percent. Cotton harvested reached 68 percent, compared to the 5-year average of 55 percent. Winter wheat planted reached 59 percent, compared to the 5-year average of 55 percent. Winter wheat emerged reached 26 percent, compared to the 5-year average of 31 percent.

	Week Ending			
	10/27/24	10/20/24	10/27/23	5 yr avg
Corn Harvested	86	80	81	77
Soybeans Harvested	75	61	71	57
Cotton Harvested	68	51	76	55
Winter Wheat Planted	59	45	61	55
Winter Wheat Emerged	26	15	30	31

MISSOURI WEEKLY HAY SUMMARY

As expected, drought conditions have worsened over the last week, however rains finally have begun to fall with most areas of the state receiving a half to an inch and half of rain in the past day with much more in the forecast for the next several days. As of this week's drought monitor near 18 percent of the state was rated in the D3 or Extreme drought status. Moisture will help a wheat crop but it's unlikely to do much else for forage this fall. It will undoubtedly help the water situation and that is become a major concern for many. Hay prices are steady. The supply of hay is moderate to heavy, and demand is light. The Missouri Department of Agriculture has a hay directory at <https://apps.mda.mo.gov/haydirectory> or visit the University of Missouri Extension feed stuff finder at <https://feedstufffinder.org>

- Alfalfa - Supreme 250.00-300.00, small square 8.00-12.00 per bale
- Alfalfa - Premium 200.00-250.00
- Alfalfa - Good 150.00-200.00, small square 5.00-10.00 per bale
- Alfalfa - Fair 125.00-150.00
- Mixed grass - Good/Premium 150.00-200.00
- Mixed grass-Fair/Good 100.00-150.00, small square 3.50-8.00 per bale
- Mixed grass - Fair 40.00-65.00 per large round bale
- Corn Stalks - 35.00 per large round bale
- Wheat straw - 4.00-7.00 per small square bale

MISSOURI WEEKLY SHEEP/GOAT AUCTION SUMMARY

Receipts: 3,498 Week Ago: 2,254 Last Year: 3,276 (w/e 10/26/24)
SHEEP: Feeder lambs Medium and Large 1-2 pkg 49 lbs 180.00. Small and Medium 1-2 hair 20-50 lbs 232.00-310.00.
 Slaughter lambs Choice and Prime 1-3 w/s pkg 66 lbs 232.00; pkg 145 lbs 103.00. Good 1-2 w/s pkg 62 lbs 150.00. Choice and Prime 1-3 hair 50-70 lbs 235.00-275.00; 70-80 lbs 210.00-245.00; 80-90 lbs 185.00-215.00; 90-100 lbs 150.00-187.00; pkg 120 lbs 142.00. Choice 1-3 hair 50-70 lbs 202.50-235.00; 70-80 lbs 176.00-210.00; pkg 99 lbs 144.00. Good 1-2 pkg 67 lbs 180.00/ 78 lbs 130.00-135.00.
 Slaughter ewes Utility and Good 1-3 200-250 lbs 69.00-90.00. Utility and Good 1-3 pkg 150 lbs 100.00/hd. Cull and Utility 1-2 100-145 lbs 47.50-70.00. Good 1-2 hair pkg 95 lbs 120.00/hd. Good 2-3 hair 85-155 lbs 90.00-100.00. Good 2-3 hair 80-125 lbs 112.50-120.00/hd. Utility and Good 1-3 hair 90-135 lbs 70.00-100.00. Utility and Good 1-3 hair 80-135 lbs 80.00-112.50/hd. Cull and Utility 1-2 75-120 lbs 62.50-65.00.
 Slaughter bucks 1-2 105-200 lbs 102.50-110.00. Hair bucks 1-2 115-155 lbs 87.50-130.00. Replacement ewes Small and Medium 1-2 hair 2-4 yrs 88 lbs exp 150.00; 100-110 lbs exp 127.00-130.00. Small and Medium hair 1-2 yrs 120 lbs exp 170.00/hd; 90 lbs fall 120.00/hd; 2-4 yrs 138 lbs exp 140.00/hd; 140 lbs fall 210.00/hd. Families Small and Medium 1-2 4-6 yrs 105 lbs exp with baby lambs 210.00/ fam.
GOATS: Feeder kids Selection 1 20-50 lbs 287.00-327.00, replacements 330.00-337.00. Selection 2 30-40 lbs 225.00-232.50; 40-50 lbs 215.00-282.50, pygmies 205.00. Selection 3 pkg 22 lbs pygmies 90.00; pkg 33 lbs 182.00; 30-40 lbs pygmies 87.00-180.00; pkg 43 lbs 200.00.
 Slaughter kids Selection 1 50-70 lbs 270.00-305.00. Selection2 50-60 lbs 250.00-280.00; 60-70 lbs 230.00-282.50; 70-80 lbs 200.00-262.50; 80-90 lbs 175.00-205.00. Selection 3 pkg 58 lbs pygmies 100.00.
 Slaughter nannies/does Selection 1-2 pkg 58 lbs pygmies 82.50; 60-70 lbs pygmies 107.00-129.00; 85-160 lbs 80.00-127.00. Selection 1-2 pkg 85 lbs 130.00/ hd; 105-130 lbs 75.00-110.00/ hd.
 Slaughter bucks/billies Selection 1-2 70-80 lbs 177.00-215.00; 90-100 lbs 112.00-170.00; 110-145 lbs 125.00-180.00. Wethers Selection 1-2 120-135 lbs 130.00-237.50. Wether kids Selection 2 27 hd 64 lbs 280.00.
 Replacement nannies/does Selection 1-2 2-4 yrs 75-90 lbs 147.00-200.00. Selection 1-2 2-4 yrs 115-150 lbs exp 140.00-200.00/hd; 115-135 lbs exp 128.00-135.00/hd.

Explanatory Notes: Stage - Represents estimated lambing/kidding period (Open, Exp=exposed, Bred, Fall = Sep-Nov, Win = Dec-Feb, Spr = Mar-May, Sum=Jun-Aug; w/s = woolled and shorn; /hd= per head; /fam=per family All price CWT unless otherwise noted.

MISSOURI DROUGHT MONITOR

Date	None	D0	D1	D2	D3	D4
10/29/24	5.19	20.77	36.32	19.88	17.84	0
10/22/24	5.85	28.97	39.73	19.71	5.74	0
10/31/23	25.05	24.96	33.30	14.89	1.80	0

Reflects percentage of Missouri impacted by drought. D0 Abnormally Dry; D1 Moderate Drought; D2 Severe Drought; D3 Extreme Drought; D4 Exceptional Drought

NATIONAL DIRECT DELIVERED FEEDER PIG REPORT

11/1/24 Receipts: 103,201 Week ago: 129,612 Year Ago: 106,579
 Early weaned pigs 3.00 higher and feeder pigs 5.00 higher.
 Cash 46,159 head 37.00-55.00, weighted average 48.27
 Formula 39,707 head 42.16-64.51, weighted average 52.72
 Feeder pigs 40 pounds basis:
 Cash 17,335 head 54.00-70.00, weighted average 64.06

NATIONAL DAILY DIRECT PRIOR DAY HOG REPORTS FOR 11/1/24

BARROWS AND GILTS (Carcass Basis): 1,205 head
 Base Carcass Price 80.00-84.50, average 83.57

SOWS (Live Basis): 7,542 head
 300-500 lbs. 25.00-78.01
 Over 500 lbs. 58.91-77.50

MISSOURI WEEKLY DIRECT SLAUGHTER CATTLE REPORT 11/01/24

Weekly Receipts: 120 Week ago: 360 Year ago: 360
 Trading as of Friday morning, flat dressed sales steady on a light test and dressed grid sales inactive.

LIVE STEERS & HEIFERS: No sales reported
DRESSED STEERS & HEIFERS: Wed 3 loads Flat 298.00

GRADE AND EIGHT (Grid): No sales reported

Please Note: The above volumes (tonnage, acres, and bales) listed are for confirmed trades only, it does not include estimated volume (tonnage) for bids or offers to the trade. List your hay for sale at: [Hay Listing Online Form](#). Explanation of Hay Quality Guidelines: [Hay Quality Designation Guidelines](#). Glossary of Terms: [Livestock, Poultry, & Grain Hay Terms](#)

Click here for the current [National Crop Progress](#)
 Click here for the current [Missouri Crop Progress](#)
 The current hay directory can be found at: [Hay Directory](#).