

Weekly Market Summary

Published by:
Missouri Department of Agriculture
Ag Business Development Division
Market News Program



Chris Chinn, Director
 Jill Wood, Division Director
 Tony Hancock, Editor
<http://www.ams.usda.gov/marketnews.htm>
[agmarketnews.mo.gov](http://www.ams.usda.gov/marketnews.htm)

Michael L. Parson, Governor

Volume XLIV, Number 48 ♦ P.O. Box 630, Jefferson City, MO 65102 ♦ (573) 751-4211 ♦ Mon, Dec 02, 2024

MISSOURI WEEKLY FEEDER CATTLE WEIGHTED AVERAGE REPORT

Feeder Cattle Receipts: 26,375 Week ago: 26,183 Year ago: 31,796
 Steers and Heifers Medium and Large 1—Weighted average weights and prices

STEERS: Medium and Large 1

319 lbs. 406.19	526 lbs. 325.00	723 lbs. 269.14	918 lbs. 248.59
378 lbs. 381.41	576 lbs. 314.25	768 lbs. 263.46	978 lbs. 238.57
422 lbs. 357.81	624 lbs. 291.99	821 lbs. 263.28	1026 lbs. 233.78
473 lbs. 342.71	673 lbs. 281.09	874 lbs. 260.52	

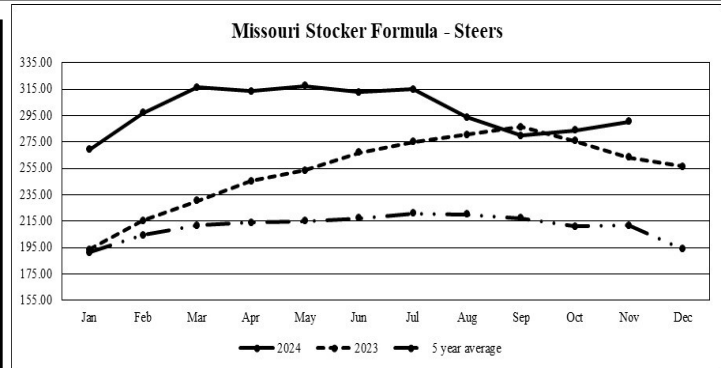
HEIFERS: Medium and Large 1

333 lbs. 331.06	525 lbs. 288.27	721 lbs. 255.26	917 lbs. 218.18
378 lbs. 339.58	573 lbs. 283.57	771 lbs. 247.79	964 lbs. 217.49
424 lbs. 321.42	625 lbs. 265.07	823 lbs. 234.24	1029 lbs. 206.85
474 lbs. 296.83	678 lbs. 256.57	882 lbs. 226.73	

MISSOURI STEER (HEIFER) STOCKER FORMULA 12/02/2024

Monday's Missouri Stocker formula consists of **4368 (3968)** head with a weighted average weight of **552.05 (541.05)** lbs. and a price value of **308.27 (278.27)**, 15.65 higher (14.85 higher) than last week.

This a rolling seven day calculated weighted value which combines all Feeder Steers reported by MDA/USDA Market News Service weighing from 400-649 lbs. in the Medium and Large 1 and Medium and Large 1-2 frame and muscle classifications, including all comment cattle except Brahman X. Heifer values are in parentheses.



*Graph is updated the first Monday of each month. Axis value ranges may be updated to reflect data points.

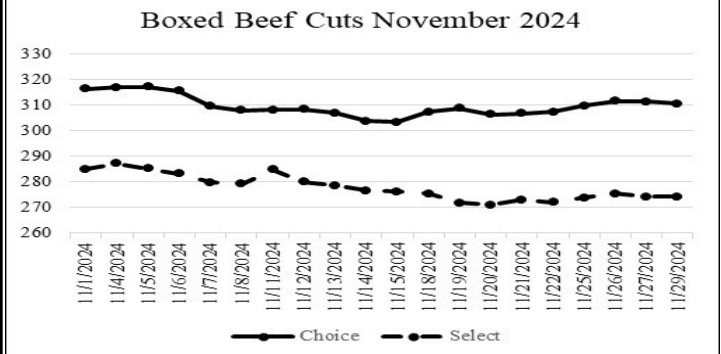
MISSOURI WEEKLY CATTLE AUCTION SUMMARY

Total Receipts: 30,118 Week Ago: 31,850 Year Ago: 38,135

Compared to last week, feeders under 750 lbs. sold 10.00 to 20.00 higher, feeders over 750 lbs. sold steady to 5.00 higher. About a third of the reported barns were closed for the Thanksgiving holiday week, while most of the other barns advertised and held some sort of special sale. Several producers hold cattle every year to market specifically this week bringing many pot loads and part loads to town with lots of quality and reputation to go along with them. The first real cold weather of the year arrived in the state and late week much of the I-70 corridor received snowfall that measured just over 4 inches in spots. Although the cold weather may not be the most pleasant for the cowboys and cowgirls it is great for growing out cattle and greatly reduces the likelihood of sick calves. Given the abundant feed and grazing available buyers seem to have more than ample orders for the overall short supply that exist and were eager to try to fill as many as possible. A few stick-out sales this week included a 49 head of 523 lb. steers at Unionville Livestock Market that sold for 355.50. Callaway Livestock Center sold 64 head of 579 lb. steers for 318.00. Green City Livestock Market sold 74 head of 663 lb. steers for 295.00 and a load of 909 lb. steers for 259.50. Joplin Regional Stockyards sold a load of 704 lb. steers at 283.50 as well as a load of 800 lb. steers for 277.00. Ozarks Regional Stockyards sold 147 head of 766 lb. steers for 267.25. Kingsville Livestock Auction sold 122 head of 889 lb. steers at 268.35. A few stick out sales of heifers this week included 61 head of 567 lb. heifers at Joplin Regional Stockyards which sold for 292.00. Lolli Brothers Livestock Market sold 85 head of thin fleshed weighting 629 lbs. at 287.85 and two loads of 712 lb. heifers for 266.25. Green City Livestock Market sold 47 head of 792 lb. heifers for 250.25. Boxed beef cutouts were mixed with the Choice/Select spread setting at 36.22. Choice closed on Friday at 310.52, up 3.11 and Select closed at 274.30, up 2.23 compared to last Friday. Negotiated feedlot sales as of the Friday afternoon report totaled 77K head as of the 2:00 report cutoff time. Sales were higher for the week. Live sales were reported mostly from 188.00-192.00 and dressed sales mostly at 294.00-306.00. The Missouri Stocker formula consists of 4368 head with a weighted average weight of 541.05 lbs. and a price value of 308.27, 15.65 higher than a week ago. The steer/heifer spread is 30.00 per cwt.

NATIONAL BOXED BEEF CUTOUT/BOXED BEEF CUTS

DATE	CHOICE	SELECT	TOTAL LOADS
11/25	309.71	273.74	126
11/26	311.57	275.49	129
11/27	311.26	274.30	175
11/28	Holiday		
11/29	310.52	274.30	57
4 Day Simple Average	310.77	274.46	



*Axis value ranges may be updated to reflect data points.

WEEKLY LIVESTOCK SLAUGHTER 11/30/24

	CATTLE	HOGS	SHEEP
Week to Date:	528,000	2,293,000	31,000
Last Week:	631,000	2,565,000	37,000
Last Year:	639,915	2,686,928	40,137

The Weekly Market Summary, as well as historical summaries, are available on our website <https://agmarketnews.mo.gov/summaries>
 Market News Hotline: 1-573-522-9244
 Check out the latest updates on our YouTube Channel: [MDA Market News](https://www.youtube.com/channel/UC...)

SOUTHWEST MISSOURI WEEKLY SUMMARY

(Joplin and Springfield)

Receipts: 13,270 Week ago: 13,626 Year Ago: 11,761
Compared to last week, steers and heifers 5.00 to 20.00 higher, spots 25.00 higher. Slaughter cows uneven from 5.00 lower to 1.00 higher. Slaughter bulls 6.00 lower to 1.00 higher.

FEEDER STEERS:

Medium and Large 1

Table with 2 columns: Weight ranges (300-400 lbs to 1000-1050 lbs) and prices (350.00-425.00 to 229.00-236.00).

FEEDER HEIFERS:

Medium and Large 1

Table with 2 columns: Weight ranges (300-400 lbs to 1000-1050 lbs) and prices (305.00-340.00 to 204.00-208.00).

FEEDER HOLSTEIN STEERS

Large 3

Table with 2 columns: Package weights (Pkg 545 lbs, 605 lbs, 735 lbs) and prices (202.50, 188.00, 183.00).

SLAUGHTER COWS: Breaking and Boning (70-85% lean) 107.00-124.50; high dressing 118.00-129.50; low dressing 86.00-110.00. Lean (85-90%) 100.00-114.00

SLAUGHTER BULLS: Yield Grade 1-2 1220-2135 lbs. 139.00-168.00; high dressing 158.00-177.50; low dressing 126.00-148.00

BRED COWS: Medium and Large 1 2-8 yrs 1150-1490 lbs 2nd/3rd stage 2050.00-2425.00. Medium and Large 1-2 2-8 yrs 990-1635 lbs 2nd/3rd stage 1500.00-2025.00, 1st stage 1575.00-1725.00 per head

BRED HEIFERS: Medium and Large 1 2-4 yrs 1085-1270 lbs 2nd/3rd stage 2350.00-2375.00. Medium and Large 1-2 2-4 yrs 975-1075 lbs 1st stage 1600.00-1775.00 per head

SOUTH CENTRAL MISSOURI WEEKLY SUMMARY

(West Plains, Phillipsburg)

Receipts: 2,653 Week ago: 4,066 Year Ago: 9,408
Compared to last week, steers under 700 lbs 4.00 lower to 4.00 higher, except 300 lbs 20.00 higher. Heifers under 700 lbs 4.00 to 8.00 higher, spots 12.00 higher. Yearling steers 4.00 to 8.00 higher. Yearling heifers not well tested. Slaughter cows and bulls steady.

FEEDER STEERS:

Medium and Large 1

Table with 2 columns: Weight ranges (300-400 lbs to 700-800 lbs) and prices (355.00-425.00 to 252.50-267.25).

FEEDER HEIFERS:

Medium and Large 1

Table with 2 columns: Weight ranges (300-400 lbs to 600-700 lbs) and prices (312.50-345.00 to 242.50-263.00).

FEEDER HOLSTEIN STEERS:

Large 3

Table with 2 columns: Package weight (Pkg 306 lbs) and price (200.00).

SLAUGHTER COWS: Breaking and Boning (70-85% lean) 107.00-120.00, high dressing 120.00-129.00; low dressing 93.00-107.00. Lean (85-90%) 95.00-106.00

SLAUGHTER BULLS: Yield Grade 1-2 1275-2005 lbs. 137.00-155.00; high dressing 158.00-175.00; low dressing 122.00-136.00

BRED COWS: Medium and Large 1-2 2-8 yrs 990-1490 lbs 1st to 3rd stage 1800.00-2550.00 per head

BRED HEIFERS: Medium and Large 1-2 <2 yrs 925-980 lbs 1st to 3rd stage 1450.00-1750.00 per head

COW & CALF PAIRS: Medium and Large 1-2 2-8 yrs 1325-1520 lbs with 150-300 lb calves 2450.00-2550.00 per pair

WEST CENTRAL MISSOURI WEEKLY SUMMARY

(Kingsville, Windsor, Butler)

Receipts: 1,662 Week ago: 4,355 Year ago: 5,505
Compared to last week, steers under 550 lbs 5.00 to 15.00 higher, over 550 lbs steady to firm. Heifers steady. Slaughter cows 3.00 lower to 3.00 higher.

FEEDER STEERS:

Medium and Large 1

Table with 2 columns: Package weights (Pkg 361 lbs to 122 hd 889 lbs) and prices (375.00 to 268.35).

FEEDER HEIFERS:

Medium and Large 1

Table with 2 columns: Package weights (Pkg 363 lbs to 14 hd 673 lbs) and prices (337.50 to 252.00).

SLAUGHTER BULLS: Yield Grade 1-2 1303-2165 lbs 151.00-162.00; high dressing 164.00-170.00; low dressing ind 134.00

SLAUGHTER COWS: Breaking and Boning (70-85% lean) 110.00-120.00, high dressing 116.00-121.00; low dressing 105.00-110.00. Lean (85-90%) 91.00-104.00

BRED COWS: Scarce

COW & CALF PAIRS: Scarce

NORTHEAST MISSOURI WEEKLY SUMMARY

(Bowling Green, Kingdom City, Palmyra)

Receipts: 4,473 Week ago: 3,361 Year ago: 3,331
Compared to last week, steers 450-650 lbs 7.00 to 10.00 higher, spots 15.00 higher, over 700 lbs steady to firm. Heifers 450-600 lbs 5.00 to 10.00 higher, spots 12.00 higher, over 600 lbs sharply higher under-tone. Slaughter cows steady to 3.00 lower.

FEEDER STEERS:

Medium and Large 1

Table with 2 columns: Weight ranges (400-500 lbs to 900-950 lbs) and prices (322.00-360.00 to 246.00-253.00).

FEEDER HEIFERS:

Medium and Large 1

Table with 2 columns: Weight ranges (300-400 lbs to 700-800 lbs) and prices (315.00-382.00 to 246.00-260.00).

SLAUGHTER BULLS: Yield Grade 1-2 1410-2245 lbs 147.00-155.50; low dressing 136.00-146.00.

SLAUGHTER COWS: Breaking and Boning, (70-85% lean) 109.00-123.00; high dressing 119.00-132.50; low dressing 98.00-115.00. Lean (85-90%) 100.00-117.00

SLAUGHTER STEERS: Choice 2 -3 183.50-189.00

SLAUGHTER HEIFERS: Scarce

BRED COWS: Medium and Large 1 2-8 yrs 1031-1425 lbs 2nd/3rd stage 2800.00-3325.00, >5 yrs 1385-1450 lbs 2nd stage 2425.00-2450.00. Medium and Large 1-2 2-8 yrs 1050-1450 lbs 2nd/3rd stage 2125.00-2750.00 per head

COW/CALF PAIRS: Medium and Large 1 2-8 yrs 1050-1500 lbs with 150-300 lb calves 3400.00-3750.00. Medium and Large 1-2 2-8 yrs 1100-1400 lbs with 150-300 lb calves 2550.00-3050.00 per pair

NORTH CENTRAL MISSOURI WEEKLY SUMMARY

(Macon, Unionville, Green City, New Cambria)

Receipts: 6,557 Week ago: 1,086 Year ago: 3,709
Compared to two weeks ago, steers and heifers firm to 10.00 higher, spots 15.00 higher. Slaughter cows mostly steady to 5.00 higher.
*Some sale barns on a bi-weekly schedule and may not have a sale each week.

FEEDER STEERS:

Medium and Large 1

Table with 2 columns: Weight ranges (400-500 lbs to 50 hd 1048 lbs) and prices (341.00-405.00 to 237.50).

FEEDER HEIFERS:

Medium and Large 1-2

Table with 2 columns: Weight ranges (300-400 lbs to 700-800 lbs) and prices (335.00-366.00 to 245.00-266.25).

SLAUGHTER BULLS: Yield Grade 1-2 1175-220 lbs 145.00-155.00; low dressing 128.00-143.00

SLAUGHTER COWS: Breaking and Boning (70-85% lean) 103.00-124.00; high dressing 116.00-134.00; low dressing 91.00-115.00. Lean (85-90%) 96.00-116.00

BRED COWS: Scarce

COW/CALF PAIRS: Scarce

SOUTHEAST MISSOURI WEEKLY SUMMARY

(Jackson and Farmington) W/E 11/26/24

Receipts: 1,687 Week ago: 1,346 Year ago: 1,186
Compared to last week, steers and heifers steady to 20.00 higher.
Slaughter cows and bulls steady.

FEEDER STEERS:
Medium and Large 1

300-400 lbs.	300.00-340.00
400-500 lbs.	290.00-327.50
500-600 lbs.	275.00-302.00
600-700 lbs.	248.00-281.00
700-800 lbs.	225.00-268.50
800-900 lbs.	220.00-247.00

FEEDER HEIFERS:
Medium and Large 1

300-400 lbs.	270.00-300.00
400-500 lbs.	260.00-300.00
500-600 lbs.	244.00-280.00
600-700 lbs.	220.00-255.00
700-800 lbs.	220.00-245.00
800-900 lbs.	208.00-229.00

SLAUGHTER BULLS: Yield Grade 1-2 1205-2260 lbs 120.00-140.00, high dressing 142.00-158.00

SLAUGHTER COWS: Breaking and Boning (75-85% lean) 104.00-115.00; high dressing 115.00-125.00. Lean (85-90% lean) 71.00-101.00

BRED COWS: Medium and Large 2 2-8 yrs 1040-1600 lbs 2nd/3rd stage 1650.00-1950.00 per head

COW & CALF PAIRS: Scarce

EAST CENTRAL MISSOURI WEEKLY SUMMARY

(Cuba, Vienna) W/E 11/23/24

Receipts: 1,837 Week Ago: 3,184 Year ago: 2,562
Compared to last week, steers unevenly steady to firm, spots 8.00 to 10.00 higher on steers under 550 lbs. Slaughter cows and bulls steady.

FEEDER STEERS:
Medium and Large 1

400-500 lbs.	316.00-347.00
500-600 lbs.	288.50-321.50
600-700 lbs.	260.00-295.00
700-800 lbs.	259.00-272.50

FEEDER HEIFERS:
Medium and Large 1

400-500 lbs.	291.00-319.00
500-600 lbs.	263.00-280.00
600-700 lbs.	244.50-245.00
700-800 lbs.	229.50-245.50

SLAUGHTER BULLS: Yield Grade 1-2 1360-2190 lbs 152.00-163.00; low dressing 125.00-142.00.

SLAUGHTER COWS: Breaking and Boning, (70-85% lean) 107.50-128.50; high dressing 115.50-134.50; low dressing 105.00-117.00. Lean (85-90%) 88.50-106.00

BRED COWS: Scarce

COW & CALF PAIRS: Scarce

NORTHWEST MISSOURI WEEKLY SUMMARY

(Tina)

Receipts: 1,503 Week Ago: 1,086 Year Ago: 1,803
Compared to last week, steers under 600 lbs steady to 7.00 higher, over 600 lbs 3.00 lower to 5.00 higher. Heifers steady to firm, spots up to 10.00 higher. Slaughter cows mostly steady to 2.00 lower.

FEEDER STEERS:
Medium and Large 1

400-500 lbs.	329.00-362.00
500-600 lbs.	301.00-329.00
600-700 lbs.	275.00-288.50
10 hd 724 lbs.	264.25
900-1000 lbs.	230.10-231.50

FEEDER HEIFERS:
Medium and Large 1

300-400 lbs.	325.00-348.00
400-500 lbs.	311.00-336.00
500-600 lbs.	281.00-301.50
600-700 lbs.	250.00-255.00

SLAUGHTER BULLS: Yield Grade 1-2 1365-1975 lbs 144.00-162.50

SLAUGHTER COWS: Breaking and Boning, (70-85% lean) 113.00-127.00; high dressing ind 127.50; low dressing 102.50-111.00. Lean (85-90%) 108.00-119.00

BRED COWS: Medium and Large 1-2 >8 yrs (broken mouth) 1140-1195 lbs 3rd stage 1150.00-1235.00 per head

COW/CALF PAIRS: Scarce

AFTERNOON NATIONAL SLAUGHTER CATTLE REVIEW

Thus far for Friday negotiated cash trading has been inactive on very light demand in all regions. Not enough purchases for a market trend. The last reported market in all regions was on Wednesday. In the Texas Panhandle live FOB purchases traded from 188.00-190.00. In Nebraska live FOB and dressed purchases traded from 190-192.00 and at 295.00, respectively. In the Western Cornbelt live FOB and dressed purchases traded at 190.00 and from 294.00-305.00, respectively.

Negotiated Cash Sales:

Confirmed:	2,183	Week Ago:	18,852	Year Ago:	2,485
Week to date:	76,972	Week Ago:	53,413	Year Ago:	66,554

<u>Live Basis</u>	<u>Steers</u>	<u>Heifers</u>
Over 80% Choice	189.00-190.00, avg 189.61	-
65-80% Choice	-	190.00
35-65% Choice	-	-
0-35% Choice	-	-
Total All Grades	189.00-190.00, avg 189.61	190.00
<u>Dressed Basis</u>		
Over 80% Choice	296.00-298.00, avg 296.92	-
65-80% Choice	-	-
35-65% Choice	-	-
0-35% Choice	-	-
Total All Grades	296.00-298.00, avg 296.92	-

<u>All Beef Type Steers/Heifers</u>	<u>Head</u>	<u>Avg Wt</u>	<u>Price Range</u>	<u>Wtd Avg</u>
Live FOB	1,984	1484.2	187.00-190.50	189.62
Live Del	-	-	-	-
Dressed Del	188	928.8	295.00-298.00	296.51
Dressed FOB	-	-	-	-

WEEKLY COMMODITY FUTURES TRENDS

Compared to last Friday, Live Cattle 0.42 to 1.60 higher, Lean Hogs 0.40 to 1.43 higher, Feeder Cattle 4.25 to 5.50 higher.

Daily Futures Closes

	Mon.	Tues.	Wed.	Thu.	Fri.
Cattle					
Dec	186.50	186.90	188.00	Holiday	187.97
Feb	187.70	187.70	188.60		188.62
Apr	189.65	189.55	190.42		190.77
Jun	185.15	185.35	186.20		186.70
Aug	183.87	184.00	184.77		185.45
Lean Hogs					
Dec	81.97	83.10	82.40	Holiday	82.07
Feb	85.92	88.27	87.92		86.32
Apr	90.12	91.57	91.62		90.75
May	92.95	94.10	94.22		93.85
Jun	100.07	101.00	101.37		101.30
Fdr Cat					
Jan	255.47	258.10	258.77	Holiday	259.47
Mar	254.32	256.47	257.30		258.62
Apr	255.52	257.50	258.40		259.62
May	256.00	257.77	258.55		259.77
Aug	260.32	261.75	262.50		263.57
Milk					
Nov	19.86	19.87	19.86	Holiday	19.86
Dec	18.41	18.80	18.52		18.52
Jan	18.31	18.62	18.25		18.25

WEEKLY COMMODITY GRAIN FUTURES TRENDS

Compared to last Friday, Soybeans 0.02 to 0.06 higher, Wheat 0.12 to 0.19 lower, Corn 0.02 to 0.04 lower, KC Wheat 0.23 to 0.34 lower, Soybean Meal Dec 2.10 lower, others 0.40 to 2.30 higher.

Daily Grain Futures Closes

	Mon.	Tues.	Wed.	Thu.	Fri.
Soybeans					
Jan	985 3/4	983 1/2	988 3/4	Holiday	989 1/2
Mar	994 1/4	994	997		996
May	1007 1/2	1008 1/2	1010 3/4		1008 1/2
Jul	1020 1/4	1021 1/2	1023 1/4		1020 1/2
Aug	1019	1020 1/2	1022 1/4		1019
Wheat					
Dec	535 3/4	539 1/2	537 3/4	Holiday	532 1/4
Mar	555 3/4	558	548 1/2		548
May	566	568 1/4	558 1/4		557
Jul	572 1/2	75	565 3/4		563 3/4
Sep	585 1/2	587 3/4	579		576 1/2
Corn					
Dec	424 3/4	420	415 3/4	Holiday	423
Mar	433	428	428		433
May	439 3/4	435 1/4	435 1/4		439 3/4
Jul	443	438 3/4	438 1/2		442 1/4
Sep	429 1/2	426 3/4	425 3/4		428
KC Wheat					
Dec	546 1/2	550 1/2	526 1/4	Holiday	520 3/4
Mar	557	558 3/4	544 1/2		540 3/4
May	563 1/4	565 3/4	552		548 1/2
Jul	570 1/2	573	559 1/2		556
Sep	583	585 1/2	572 1/2		569
SB Meal					
Dec	293.70	288.10	290.50	Holiday	287.10
Jan	295.90	291.40	295.40		291.90
Mar	299.50	295.80	300.20		297.60
May	303.70	300.30	304.60		302.40
Jul	308.30	308.90	309.10		307.10

MISSOURI GRAIN WEEKLY TRENDS

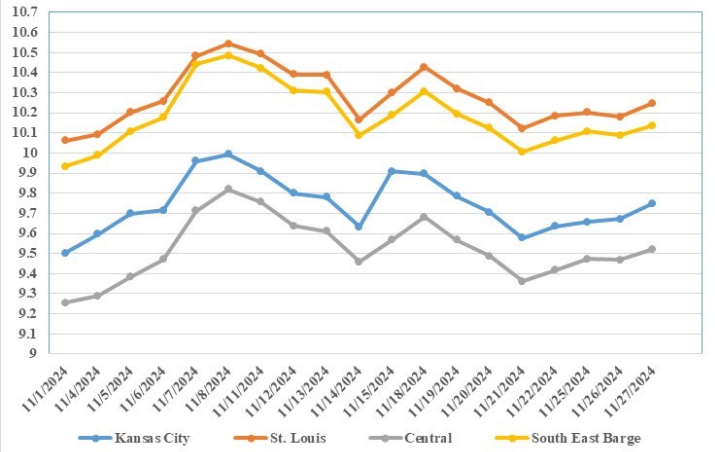
Compared to last week, Soybeans 0.05 to 0.20 higher, Wheat 0.05 to 0.06 lower, Corn 0.09 to 0.10 lower, Sorghum 0.10 to 0.23 lower.

Area	#1 Soybeans	#2 Soft Wheat	#2 Corn	#2 Grain Sorghum
Kansas City				
Friday**	9.34-9.94	5.19	3.91-4.30	4.61
Monday	9.35-9.95	5.10	3.89-4.28	4.59
Tuesday	9.49-9.94	5.15	3.85-4.24	4.55
Wednesday	9.54-9.99	5.14	3.81-4.21	4.38
Thursday	Holiday			
Friday	Holiday			
St. Louis				
Friday**	10.19	5.54-5.59	4.56	4.51
Monday	10.19-10.20	5.40-5.50	4.54-4.55	4.49
Tuesday	10.18-10.19	5.33-5.55	4.51	4.45
Wednesday	10.24-10.26	5.48-5.54	4.47	4.41
Thursday	Holiday			
Friday	Holiday			
Central				
Friday**	9.39-9.44	4.94-5.04	3.91-3.96	---
Monday	9.40-9.55	4.95	3.80-3.99	---
Tuesday	9.44-9.54	4.90-5.00	3.89-3.95	---
Wednesday	9.49-9.59	4.88-4.99	3.86-3.93	---
Thursday	Holiday			---
Friday	Holiday			---
S.E. MO				
Friday**	9.99-10.11	---	4.46-4.53	---
Monday	10.09-10.12	---	4.44-4.51	---
Tuesday	10.08-10.11	---	4.41-4.47	---
Wednesday	10.13-10.16	---	4.36-4.46	---
Thursday	Holiday			---
Friday	Holiday			---

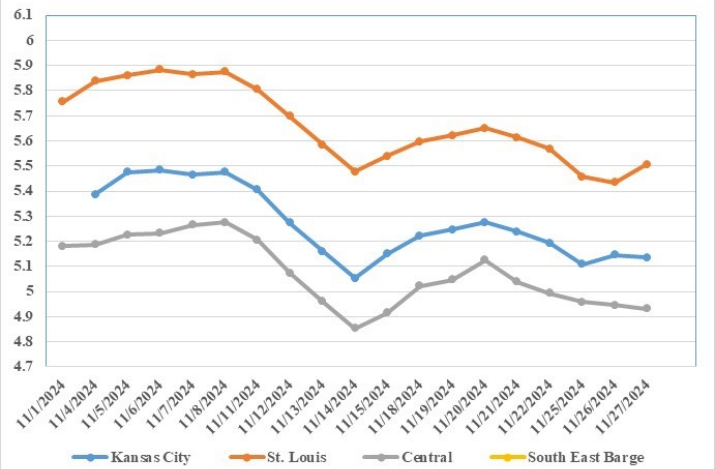
(PRICES PER BUSHEL) *NEW CROP **PREVIOUS WEEK'S PRICES
 *Bids calculated using Kansas City, St. Louis, and St. Joseph bids

MONTHLY GRAIN CROP

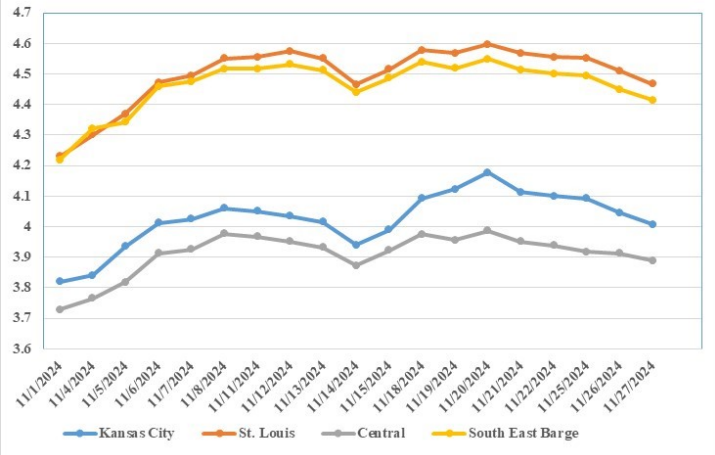
November 2024 Soybean Bids



November 2024 Wheat Bids



November 2024 Corn Bids



*Axis value ranges may be updated to reflect data points.
 Only dates in which markets are trading and only current cash bids are represented.

WHOLESALE FEEDSTUFFS PRICES 11/22/24
 (DOLLARS PER TON-BULK BASIS)

Area	Cottonseed Meal 41%	Soybean Meal 46.5-48%	Corn Gluten Pellets 21%	Wheat Middlings
Kansas City	Na	294.70	200.00	167.67
St. Louis	355.00	n/a	192.50	163.50

MISSOURI CROP PROGRESS AND CONDITION

There were 4.3 days suitable for fieldwork in the week ending November 24, 2024. Statewide, the average temperature was 47.5 degrees, 4.8 degrees above normal. Precipitation averaged 0.90 inches, 0.02 inches above normal. Topsoil moisture supply was rated 1 percent very short, 8 percent short, 85 percent adequate, and 6 percent surplus. Subsoil moisture supply was rated 4 percent very short, 15 percent short, 79 percent adequate, and 2 percent surplus. Soybeans harvested reached 95 percent, compared to the 5-year average of 95 percent. Winter wheat planted reached 96 percent, compared to the 5-year average of 95 percent. Winter wheat emerged reached 82 percent, compared to the 5-year average of 84 percent. Winter wheat condition was rated 1 percent very poor, 1 percent poor, 20 percent fair, 71 percent good, and 7 percent excellent.

This is the final weekly crop progress report for 2024

	Week Ending			
	11/24/24	11/17/24	11/24/23	5 yr avg
Soybeans Harvested	95	93	98	95
Winter Wheat Planted	96	92	97	95
Winter Wheat Emerged	82	77	89	84

MISSOURI WEEKLY HAY SUMMARY W/E 11/22/24

After a very warm weekend it felt like winter as winds turned from the north mid-week and much colder air arrived. Scattered rains continue to provide slight improvement to the drought monitor. Currently about 50 percent of the state is drought free with the other 50 percent fairly evenly split between D1 and D2 status. Hay movement is light. Hay prices are steady. The supply of hay is moderate to heavy, and demand is light. The Missouri Department of Agriculture has a hay directory at <https://apps.mda.mo.gov/haydirectory> or visit the University of Missouri Extension feed stuff finder at <https://feedstufffinder.org>

- Alfalfa - Supreme 250.00-300.00, small square 8.00-12.00 per bale
- Alfalfa - Premium 200.00-250.00
- Alfalfa - Good 150.00-200.00, small square 5.00-10.00 per bale
- Alfalfa - Fair 125.00-150.00
- Corn Stalks - 35.00 per large round bale
- Mixed grass - Good/Premium 125.00-200.00
- Mixed grass-Fair/Good 80.00-125.00, small square 3.50-8.00 per bale
- Mixed grass - Fair 30.00-60.00 per large round bale
- Wheat straw - 4.00-7.00 per small square bale

Please Note: The above volumes (tonnage, acres, and bales) listed are for confirmed trades only, it does not include estimated volume (tonnage) for bids or offers to the trade. List your hay for sale at: [Hay Listing Online Form](#). Explanation of Hay Quality Guidelines: [Hay Quality Designation Guidelines](#). Glossary of Terms: [Livestock, Poultry, & Grain Hay Terms](#)

MISSOURI WEEKLY SHEEP/GOAT AUCTION SUMMARY

Receipts: 940 Week Ago: 955 Last Year: 967

SHEEP: Feeder lambs Small and Medium 1-2 25-45 lbs 270.00-292.50; pkg 44 lbs thin 212.00; pkg 50 lbs 227.00. Slaughter lambs Choice and Prime 1-3 w/s pkg 136 lbs 152.00. Choice and Prime 1-3 hair 50-60 lbs 232.00-265.00; 60-70 lbs 218.00-252.00; 70-80 lbs 200.00-222.00; 80-90 lbs 187.50-200.00; pkg 115 lbs 171.00. Choice 1-3 hair 50-70 lbs 200.00-215.00; 70-90 lbs 180.00-200.00; pkg 107 lbs 140.00. Good 1-2 hair pkg 68 lbs 150.00; pkg 84 lbs 165.00. Slaughter ewes Cull and Utility 1-2 10 hd 125 lbs 32.00. Good 2-3 hair 120-130 lbs 100.00-107.00. Utility and Good 1-3 hair 70-120 lbs 70.00-90.00. Cull and Utility 1-2 hair pkg 86 lbs 40.00. Slaughter bucks 1-2 hair 115-180 lbs 75.00-102.50. Replacement ewes hair Small and Medium 1-2 2-4 yrs 80-105 lbs exp 125.00-152.00; 4-6 yrs 120-135 lbs exp 115.00-122.00. Replacement bucks Small and Medium 1-2 hair <1 yrs 85-90 lbs 175.00-200.00.

GOATS: Feeder kids Selection 1 18 hd 29 lbs 200.00; 30-40 lbs 215.00-257.50; 40-50 lbs 180.00-242.50. Selection 3 20-30 lbs pygmies 80.00-117.00; 30-45 lbs 77.50-175.00; 46 lbs pygmies 72.00; pkg 45 lbs pygmies 93.00. Wether kids Selection 3 pkg 48 lbs pygmies 107.00. Slaughter kids Selection 1 55-65 lbs 270.00-275.00. Selection 2 pkg 38 lbs 222.00; 50-65 lbs 195.00-257.00. Slaughter nannies/does Selection 1-2 60 lbs pygmies 72.50-85.00; pkg 85 lbs 70.00; 95-150 lbs 95.00-120.00. Slaughter bucks/billies Selection 1-2 100-130 lbs 175.00-182.50. Wethers Selection 1-2 85-95 lbs 202.00-210.00. Replacement nannies/does Selection 1-2 2-4 yrs 110-115 lbs exp 145.00-165.00; pkg 158 lbs 225.00 per head. Replacement bucks/billies Selection 1-2 <1 yrs 110 lbs 275.00 per head

Explanatory Notes: Stage - Represents estimated lambing/kidding period (Open, Exp=exposed, Bred, Fall = Sep-Nov, Win = Dec-Feb, Spr = Mar-May, Sum=Jun-Aug; w/s = woolled and shorn; /hd= per head; /fam=per family All price CWT unless otherwise noted.

MISSOURI DROUGHT MONITOR

Date	None	D0	D1	D2	D3	D4
11/26/24	47.76	25.24	27.00	0	0	0
11/19/24	47.75	25.23	27.02	0	0	0
11/28/23	13.70	19.83	42.15	23.41	0.91	0

Reflects percentage of Missouri impacted by drought. D0 Abnormally Dry; D1 Moderate Drought; D2 Severe Drought; D3 Extreme Drought; D4 Exceptional Drought

NATIONAL DIRECT DELIVERED FEEDER PIG REPORT

11/29/24 Receipts: 101,975 Week ago: 82,797 Year Ago: 107,793 Early weaned pigs 3.00 to 4.00 higher and feeder pigs 8.00 higher. Cash 50,112 head 48600-67.00, weighted average 59.87 Formula 32,513 head 49.83-70.40, weighted average 60.33 Feeder pigs 40 pounds basis: Cash 19,350 head 68.00-85.00, weighted average 78.07

NATIONAL DAILY DIRECT PRIOR DAY HOG REPORTS FOR 12/02/24

BARROWS AND GILTS (Carcass Basis): 1,191 head Base Carcass Price 78.00-88.00, weighted average 85.30

SOWS (Live Basis): 4,034 head
300-500 lbs. 42.00-67.50
Over 500 lbs. 42.00-71.03

MISSOURI WEEKLY DIRECT SLAUGHTER CATTLE REPORT 11/29/24

Weekly Receipts: 160 Week ago: 320 Year ago: 280 Trading as of Friday morning, flat dressed sales 4.00 higher and grid dressed sales 6.00 higher than last week's bids.

LIVE STEERS & HEIFERS: DRESSED STEERS & HEIFERS: No sales reported 2 loads flat Wed 294.00.

GRADE AND EIGHT (Grid): 2 loads Wed 304.00.

Click here for the current [National Crop Progress](#)
Click here for the current [Missouri Crop Progress](#)
The current hay directory can be found at: [Hay Directory](#).