

# Weekly Market Summary

Published by:  
**Missouri Department of Agriculture**  
**Ag Business Development Division**  
**Market News Program**



Chris Chinn, Director  
 Jill Wood, Division Director  
 Tony Hancock, Editor  
[agmarketnews.mo.gov](http://www.ams.usda.gov/marketnews.htm)  
<http://www.ams.usda.gov/marketnews.htm>

Michael Kehoe, Governor

Volume XLV, Number 6 ♦ P.O. Box 630, Jefferson City, MO 65102 ♦ (573) 751-4211 ♦ Mon, Feb 10, 2025

## MISSOURI WEEKLY FEEDER CATTLE WEIGHTED AVERAGE REPORT

Feeder Cattle Receipts: 38,098 Week ago: 46,401 Year ago: 53,764  
 Steers and Heifers Medium and Large 1—Weighted average weights and prices

### STEERS: Medium and Large 1

274 lbs. 394.59 477 lbs. 383.65 674 lbs. 304.68 865 lbs. 261.84  
 319 lbs. 419.48 524 lbs. 362.43 720 lbs. 293.08 922 lbs. 253.77  
 369 lbs. 409.82 573 lbs. 339.39 769 lbs. 275.33 974 lbs. 243.00  
 424 lbs. 396.93 621 lbs. 325.52 815 lbs. 269.36

### HEIFERS: Medium and Large 1

288 lbs. 389.15 476 lbs. 336.76 672 lbs. 277.38 940 lbs. 212.56  
 324 lbs. 376.05 523 lbs. 320.32 722 lbs. 265.69  
 381 lbs. 359.20 570 lbs. 302.46 771 lbs. 251.32  
 424 lbs. 349.61 625 lbs. 282.95 821 lbs. 244.95

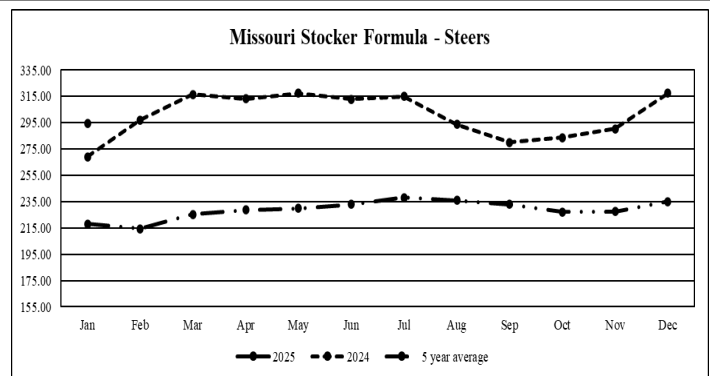
## MISSOURI STEER (HEIFER) STOCKER FORMULA 2/10/2025

Monday's Missouri Stocker formula consists of **7339 (8165)** head with a weighted average weight of **556.45 (548.50)** lbs. and a price value of **337.90 (299.29)**, 0.61 lower (4.67 lower) than a week ago. This a rolling seven day calculated weighted value which combines all Feeder Steers reported by MDA/USDA Market News Service weighing from 400-649 lbs. in the Medium and Large 1 and Medium and Large 1-2 frame and muscle classifications, including all comment cattle except Brahman X. Heifer values are in parentheses.

## MISSOURI WEEKLY CATTLE AUCTION SUMMARY

Total Receipts: 43,214 Week Ago: 52,105 Year Ago: 59,155

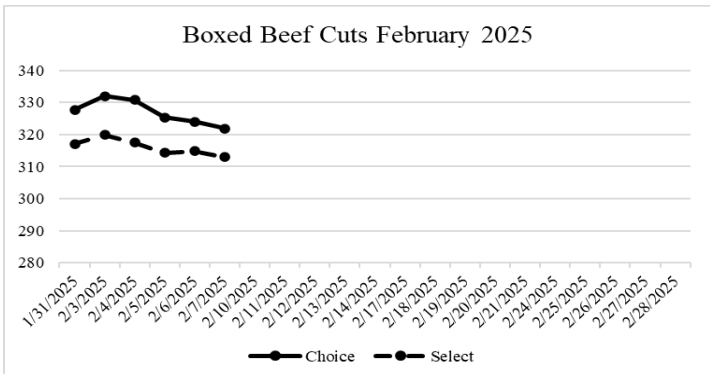
Compared to last week, feeder steers and heifers sold unevenly steady to 5.00 lower. The supply of feeders was moderate. Several reporters noted that overall quality at local auctions was not as impressive as what had been seen last several weeks. Multiple factors overshadowed last week's cattle inventory report and allowed for at least a temporary change in direction of nearly all aspects of the livestock arena this week. Falling futures throughout the week did little to support markets as the nearby Feeder Cattle contract lost 10.82 by Friday's close. Warmer temperatures as made for a nice supply of mud to deal with while feeding this week but the forecast for the upcoming weeks looks to turn that much back solid and bring more wintery precipitation to the state. A few stick out sales this week included 24 head of 542 lb. steers at Callaway Livestock Center which sold for 395.00. Green City Livestock Market sold 30 head of 625 lb. steers for 346.50 as well as 33 head of 759 lb. steers for 287.75. Tina Livestock Market sold 64 head of 857 lb. steers for 273.10. An extreme top on 18 head of heifers weighting 504 lbs. was seen at Callaway Livestock Center at 368.00. Lolli Brothers Livestock Market sold 75 head of 708 lb. heifers for 273.10. Green City Livestock Market sold 21 head of replacement heifers 791 lbs. for 304.00. Boxed beef cutouts were lower for the week. Choice closed on Friday at 327.87, down 5.81 and Select closed at 312.90, down 4.17 compared to last Friday. Negotiated feedlot sales as of the Friday afternoon report totaled just over 71K head as of the 2:00 report cutoff time. Sales were mostly 2.00 lower. Live sales were reported mostly at 206.00-208.00 and dressed sales at 328.00. The Missouri Stocker formula consists of 7339 head with a weighted average weight of 556.45 lbs. and a price value of 337.90, 0.61 lower than last week. The steer/heifer spread is 38.61 per cwt.



\*Graph is updated the first Monday of each month. Axis value ranges may be updated to reflect data points.

## NATIONAL BOXED BEEF CUTOUT VALUES

DATE	CHOICE	SELECT	TOTAL LOADS
02/03	331.99	319.84	89
02/04	330.73	317.41	106
02/05	325.34	314.33	161
02/06	323.98	314.77	114
02/07	321.87	312.90	155
5 Day Simple Average	326.78	315.85	



\*Axis value ranges may be updated to reflect data points.

## WEEKLY LIVESTOCK SLAUGHTER 02/08/25

	CATTLE	HOGS	SHEEP
Week to Date:	584,000	2,536,000	37,000
Last Week:	600,000	2,569,000	36,000
Last Year:	617,013	2,623,899	35,254

**SOUTHWEST MISSOURI WEEKLY SUMMARY**

(Joplin and Springfield)

Receipts: 14,170 Week ago: 17,802 Year Ago: 18,718  
Compared to last week, steers and heifers uneven from 10.00 lower to 5.00 higher. Slaughter cows steady to 3.00 higher. Slaughter bulls steady to 5.00 higher.

**FEEDER STEERS:**  
Medium and Large 1

Table with 2 columns: Weight (300-400 lbs to 900-1000 lbs) and Price Range (400.00-440.00 to 240.00-252.50)

**FEEDER HEIFERS:**  
Medium and Large 1

Table with 2 columns: Weight (300-400 lbs to 800-900 lbs) and Price Range (340.00-395.00 to 233.00-247.00)

**FEEDER HOLSTEIN STEERS**  
Large 3

Table with 2 columns: Pkg (477 lbs, 824 lbs) and Price (230.00, 186.00)

**SLAUGHTER COWS:** Breaking and Boning (70-85% lean) 120.00-139.00; high dressing 135.00-151.00; low dressing 105.00-125.00. Lean (85-90%) 109.00-133.00.

**SLAUGHTER BULLS:** Yield Grade 1-2 1205-2630 lbs. 134.50-172.00; high dressing 170.00-194.00; low dressing 142.50-156.00.

**BRED COWS:** Medium and Large 1 2-4 yrs 1080 lbs 1st stage 2350.00; 2-8 yrs 1005-1640 lbs 2nd/3rd stage 2225.00-2800.00, 1st stage 2150.00-2200.00; >8 yrs 1153-1580 lbs 2nd/3rd stage 2150.00-2525.00 per head.

**BRED HEIFERS:** Medium and Large 1 2-4 yrs 955-1085 lbs 2nd/3rd stage 2300.00-2600.00 per head

**COW & CALF PAIRS:** Medium and Large 1 2-4 yrs 1110 lbs with 150-300 lb calves 3250.00. Medium and Large 1-2 >8 yrs 1140-1145 lbs with 150-300 lb calves 2550.00-3100.00 per pair

**SOUTH CENTRAL MISSOURI WEEKLY SUMMARY**

(West Plains, Phillipsburg)

Receipts: 4,930 Week ago: 7,414 Year Ago: 8,198  
Compared to last week, steers and heifers uneven from 10.00 lower to 5.00 higher. Slaughter cows and bulls uneven from 2.00 lower to 4.00 higher.

**FEEDER STEERS:**  
Medium and Large 1

Table with 2 columns: Weight (300-400 lbs to 800-900 lbs) and Price Range (400.00-445.00 to 241.00-261.00)

**FEEDER HEIFERS:**  
Medium and Large 1

Table with 2 columns: Weight (350-400 lbs to 700-750 lbs) and Price Range (337.50-350.00 to 242.50-250.00)

**FEEDER HOLSTEIN STEERS:**  
Large 3

Scarce Scarce

**SLAUGHTER COWS:** Breaking and Boning (70-85% lean) 120.00-136.50, high dressing 134.00-158.00; low dressing 110.50-122.50. Lean (85-90%) 101.00-125.00

**SLAUGHTER BULLS:** Yield Grade 1-2 1285-2510 lbs. 150.50-170.00; high dressing 171.00-184.00; low dressing 125.00-151.00.

**BRED COWS:** Medium and Large 1 2-8 yrs 1020-1315 lbs 2nd/3rd stage 2300.00-3600.00. Medium and Large 1-2 2-8 yrs 1100-1480 lbs 2nd/3rd stage 2000.00-2650.00, 1st stage 1900.00-2350.00 per head

**COW & CALF PAIRS:** Medium and Large 1-2 2-8 yrs 1287-1400 lbs with 150-300 lb calves 2875.00-3600.00 per pair

**WEST CENTRAL MISSOURI WEEKLY SUMMARY**

(Kingsville, Windsor, Butler)

Receipts: 5,905 Week ago: 9,326 Year ago: 9,008  
Compared to last week, steers and heifers sold unevenly steady from 5.00 higher to 5.00 lower. Slaughter cows sold steady to 2.00 higher.

**FEEDER STEERS:**  
Medium and Large 1

Table with 2 columns: Weight (400-500 lbs to 44 hd 917 lbs) and Price Range (362.50-415.00 to 255.75)

**FEEDER HEIFERS:**  
Medium and Large 1

Table with 2 columns: Weight (400-500 lbs to Pkg 931 lbs) and Price Range (328.00-392.50 to 213.00)

**SLAUGHTER BULLS:** Yield Grade 1-2 1420-2355 lbs. 156.00-181.00; high dressing 170.00-183.50; low dressing couple 148.50-154.00.

**BRED COWS:** Scarce

**SLAUGHTER COWS:** Breaking and Boning (70-85% lean) 119.00-140.00, high dressing 136.00-150.00. Lean (85-90%) 104.00-122.00.

**COW & CALF PAIRS:** Scarce

**NORTHEAST MISSOURI WEEKLY SUMMARY**

(Bowling Green, Kingdom City, Palmyra)

Receipts: 5,283 Week ago: 6,662 Year ago: 7,198  
Compared to last week, steers under 600 lbs 5.00 to 10.00 higher, 600-800 lbs 3.00 to 8.00 higher, over 800 lbs steady. Heifers 450-500 lbs 10.00 to 15.00 higher, 500-600 lbs 5.00 to 10.00 higher, over 600 lbs steady. Slaughter cows steady to 4.00 lower.

**FEEDER STEERS:**  
Medium and Large 1

Table with 2 columns: Weight (400-500 lbs to 60 hd 934 lbs) and Price Range (371.00-401.00 to 263.35)

**FEEDER HEIFERS:**  
Medium and Large 1

Table with 2 columns: Weight (300-400 lbs to 10 hd 801 lbs) and Price Range (375.00-412.50 to 238.75)

**SLAUGHTER BULLS:** Yield Grade 1-2 1267-2380 lbs. 156.00-181.00; high dressing 172.00-182.00; low dressing 143.00-164.00.

**SLAUGHTER STEERS:** Choice 2-3 203.00-208.00. Select 2-3 198.00-199.00.

**BRED COWS:** Medium and Large 1 2-8 yrs 1124-1450 lbs 2nd stage 2700.00-3000.00, 3rd stage 3250.00-3650.00. Medium and Large 1-2 2-4 yrs 1075-1267 lbs 3rd stage 3000.00-3275.00; 2-8 yrs 998-1608 lbs 2nd/3rd stage 2100.00-3400.00 per head

**SLAUGHTER COWS:** Breaking and Boning, (70-85% lean) 121.00-139.00; high dressing 132.50-154.00; low dressing 107.00-131.00. Lean (85-90%) 109.00-127.00

**SLAUGHTER HEIFERS:** Choice 2-3 202.00-208.00. Select and Choice 1-3 200.00-202.00.

**COW CALF PAIRS:** Medium and Large 1 2-8 yrs 1100-1150 lbs with >300 lb calves rebred 1st/2nd stage 3900.00-4100.00. Medium and Large 1-2 2-8 yrs 975-1350 lbs with 150-300 lb calves 2800.00-3525.00 per pair

**NORTH CENTRAL MISSOURI WEEKLY SUMMARY**

(Macon, Unionville, Green City, New Cambria)

Receipts: 6,510 Week ago: 3,218 Year ago: 7,912  
Compared to last week, steers and heifers mostly steady to firm, spots 5.00 higher. Slaughter cows steady to 3.00 lower.

\*Some sale barns on a bi-weekly schedule and may not have a sale each week.

**FEEDER STEERS:**  
Medium and Large 1

Table with 2 columns: Weight (400-500 lbs to 800-900 lbs) and Price Range (367.50-409.00 to 255.25-286.25)

**FEEDER HEIFERS:**  
Medium and Large 1

Table with 2 columns: Weight (400-500 lbs to 800-850 lbs) and Price Range (329.50-360.00 to 238.00-254.75)

**SLAUGHTER BULLS:** Yield Grade 1-2 1455-2385 lbs. 150.00-170.00

**BRED COWS:** Scarce

**SLAUGHTER COWS:** Breaking and Boning (70-85% lean) 113.00-134.00; high dressing 131.00-144.00. Lean (85-90%) 100.00-119.00

**COW/CALF PAIRS:** Scarce

**SOUTHEAST MISSOURI WEEKLY SUMMARY**

(Jackson and Farmington)

Receipts: 1,942 Week ago: 1,660 Year ago: 2,067

Compared to last week, steers and heifers very uneven from 15.00 lower to 9.00 higher. Slaughter cows and bulls uneven from 3.00 lower to 3.00 higher.

**FEEDER STEERS:**  
Medium and Large 1

300-400 lbs.	357.00-420.00
400-500 lbs.	330.00-402.00
500-600 lbs.	292.00-345.00
600-700 lbs.	275.00-310.00
700-800 lbs.	240.00-290.00
800-900 lbs.	235.00-262.00

**FEEDER HEIFERS:**  
Medium and Large 1

300-400 lbs.	325.00-380.00
400-500 lbs.	275.00-347.00
500-600 lbs.	262.00-322.00
600-700 lbs.	230.00-287.00
700-800 lbs.	211.00-256.00

**SLAUGHTER BULLS:** Yield Grade 1-2 1130-2215 lbs 131.00-156.00, high dressing 139.50-181.00.

**SLAUGHTER COWS:** Breaking and Boning (75-85% lean) 109.00-126.00; high dressing 120.00-146.00. Lean (85-90% lean) 84.50-110.00.

**BRED COWS:** Medium and Large 2 2-8 yrs 1015-1620 lbs 1st to 3rd stage 1500.00-2050.00; >8 yrs 1210-1370 lbs 2nd stage 1450.00-1950.00 per head

**COW & CALF PAIRS:** Scarce

**EAST CENTRAL MISSOURI WEEKLY SUMMARY**

(Cuba, Vienna)

Receipts: 2,163 Week Ago: 3,392 Year ago: 3,629

Compared to last week, steers and heifers 2.00 to 10.00 lower, except heifers under 500 lbs mostly steady. Slaughter cows 1.00 to 4.00 higher.

**FEEDER STEERS:**  
Medium and Large 1

400-500 lbs.	332.50-365.00
500-600 lbs.	311.00-371.00
600-700 lbs.	285.00-347.00
700-800 lbs.	259.00-297.00
800-900 lbs.	257.00-259.50

**FEEDER HEIFERS:**  
Medium and Large 1

350-400 lbs.	337.50-377.00
400-500 lbs.	310.00-374.00
500-600 lbs.	271.00-322.00
600-700 lbs.	251.00-276.00
700-750 lbs.	240.00-266.00

**SLAUGHTER BULLS:** Yield Grade 1-2 1340-2185 lbs 150.00-165.00; high dressing 164.50-169.50; low dressing 119.00-147.50

**SLAUGHTER COWS:** Breaking and Boning, (70-85% lean) 122.00-133.50; high dressing 134.50-137.00. Lean (85-90%) 107.50-120.50.

**BRED COWS:** Medium and Large 1-2 2-8 yrs 1030-1490 lbs 2nd/3rd stage 1750.00-2450.00; >8yrs 1358-1462 lbs 3rd stage 1975.00-2125.00 per head

**COW & CALF PAIRS:** Scarce

**NORTHWEST MISSOURI WEEKLY SUMMARY**

(Tina)

Receipts: 2,311 Week Ago: 2,631 Year Ago: 2,425

Compared to last week, feeders under 700 lbs 5.00 to 10.00 higher, spots up to 25.00 higher; over 700 lbs mostly steady. Slaughter cows and bulls steady to 6.00 higher.

**FEEDER STEERS:**  
Medium and Large 1

300-400 lbs.	435.00-450.00
400-500 lbs.	370.00-400.00
500-600 lbs.	345.00-384.00
600-700 lbs.	270.00-362.00
700-800 lbs.	272.50-266.75
800-900 lbs.	264.75-273.10

**FEEDER HEIFERS:**  
Medium and Large 1

350-400 lbs.	395.00-396.00
400-500 lbs.	344.00-372.50
500-600 lbs.	314.00-340.00
600-700 lbs.	268.00-302.50
Pkg 720 lbs.	272.00

**SLAUGHTER BULLS:** Yield Grade 1-2 1740-1840 lbs 175.00-178.50.

**SLAUGHTER COWS:** Breaking and Boning, (70-85% lean) 121.00-143.00; high dressing 138.00-149.00; low dressing 108.50-137.00. Lean (85-90%) 110.00-117.00

**BRED COWS:** Scarce

**COW/CALF PAIRS:** Scarce

**AFTERNOON NATIONAL SLAUGHTER CATTLE REVIEW**

So far for Friday, negotiated cash trade has been mostly inactive on very light demand in all regions. The last reported market in all regions was Thursday. In the Southern Plains, live FOB purchases traded at 206.00. In Nebraska, live FOB and dressed delivered purchases traded at 208.00 and 328.00, respectively. In the Western Cornbelt, live FOB purchases traded from 205.00-208.00 and dressed delivered traded at 328.00.

**Negotiated Cash Sales:**

<b>Confirmed:</b>	1,807	<b>Week Ago:</b>	8,094	<b>Year Ago:</b>	4,622
<b>Week to date:</b>	71,344	<b>Week Ago:</b>	43,215	<b>Year Ago:</b>	14,089

<u>Live Basis</u>	<u>Steers</u>	<u>Heifers</u>
<b>Over 80% Choice</b>	203.00	204.00
<b>65-80% Choice</b>	-	-
<b>35-65% Choice</b>	-	-
<b>0-35% Choice</b>	-	-
<b>Total All Grades</b>	203.00	204.00
<u>Dressed Basis</u>		
<b>Over 80% Choice</b>	325.00	-
<b>65-80% Choice</b>	-	-
<b>35-65% Choice</b>	-	-
<b>0-35% Choice</b>	-	-
<b>Total All Grades</b>	325.00	-

<u>All Beef Type Steers/Heifers</u>	<u>Head</u>	<u>Avg Wt</u>	<u>Price Range</u>	<u>Wtd Avg</u>
Live FOB	851	1486.8	203.00-208.00	204.05
Live Del	271	1513.5	202.00-210.00	207.17
Dressed Del	657	977.6	325.00-334.00	327.61
Dressed FOB	-	-	-	-

**WEEKLY COMMODITY FUTURES TRENDS**

Compared to last week, Live Cattle 3.55 to 5.53 lower, Lean Hogs 1.27 to 3.08 higher, Feeder Cattle 7.17 to 10.82 lower.

**Daily Futures Closes**

	Mon.	Tues.	Wed.	Thu.	Fri.
<b>Cattle</b>					
Feb	202.97	201.87	203.60	200.62	200.77
Apr	200.15	198.65	201.30	196.77	196.77
Jun	194.47	193.22	195.90	191.82	192.10
Aug	191.05	189.87	192.22	188.72	189.25
Oct	191.42	190.25	192.47	189.57	190.15
<b>Lean Hogs</b>					
Feb	84.32	85.07	86.65	86.65	87.25
Apr	86.35	89.75	91.55	91.75	92.15
May	90.72	93.75	95.72	95.82	96.02
Jun	99.35	101.95	103.85	103.85	104.27
Jul	100.32	102.57	104.50	104.55	105.17
<b>Fdr Cattle</b>					
Mar	270.50	268.25	270.72	265.30	264.90
Apr	269.82	267.62	270.47	265.00	264.82
May	267.97	265.80	268.80	263.70	263.60
Aug	269.15	267.25	270.27	265.95	266.17
Sep	267.47	265.67	268.67	264.70	265.10
<b>Milk</b>					
Feb	20.06	20.28	20.34	20.37	20.11
Mar	19.62	19.93	20.01	20.06	19.44
Apr	19.31	19.66	19.68	19.67	19.22

**WEEKLY COMMODITY GRAIN FUTURES TRENDS**

Compared to last week, Soybeans 0.07 to 0.09 higher, Wheat 0.20 to 0.23 higher, Corn 0.05 to 0.08 higher, KC Wheat 0.24 to 0.25 higher, Soybean Meal Mar 0.30 higher, others 0.40 to 1.00 lower.

**Daily Grain Futures Closes**

	Mon.	Tues.	Wed.	Thu.	Fri.
<b>Soybeans</b>					
Mar	1058 1/4	1075	1057	1060 1/2	1049 1/2
May	1072 3/4	1088	1072 1/4	1075 3/4	1065 1/2
Jul	1087	1100 3/4	1086 3/4	1090	1081
Aug	1081 1/4	1094	1081	1084 1/4	1076 1/4
Sep	1062 1/2	1074	1062 3/4	1066	1057 1/2
<b>Wheat</b>					
Mar	566 3/4	577	572 1/4	587 3/4	582 3/4
May	578 1/2	588 3/4	584 1/2	598 3/4	595 1/2
Jul	509 1/4	599 1/4	596 3/4	610	606 1/4
Sep	604	612 1/4	610 1/2	623 1/4	619 1/4
Dec	622	630 1/2	629	641	637 1/2
<b>Corn</b>					
Mar	488 3/4	494 1/2	493 1/4	495 1/4	487 1/2
May	499 3/4	504 3/4	504 3/4	507 1/2	500 1/2
Jul	503 1/2	506 3/4	507 1/2	510 3/4	504 1/2
Sep	466 1/4	469 3/4	470 1/2	472	467
Dec	465 1/4	468	468 1/2	469 3/4	466
<b>KC Wheat</b>					
Mar	585 3/4	594 3/4	591 3/4	607 1/2	604 1/4
May	595 1/4	604	601 1/4	616 1/4	613 3/4
Jul	604 1/2	613 1/4	610 3/4	625	623
Sep	616 3/4	625 1/2	623 1/4	637 1/2	635 1/2
Dec	633 1/4	641 3/4	640	654	652 1/2
<b>SB Meal</b>					
Mar	303.70	314.00	308.30	306.40	301.40
May	312.00	322.00	316.30	314.40	309.20
Jul	319.50	329.30	323.70	321.70	316.40
Aug	321.30	330.70	325.50	323.70	318.30
Sep	321.80	330.90	326.10	324.40	319.00

**MISSOURI GRAIN WEEKLY TRENDS**

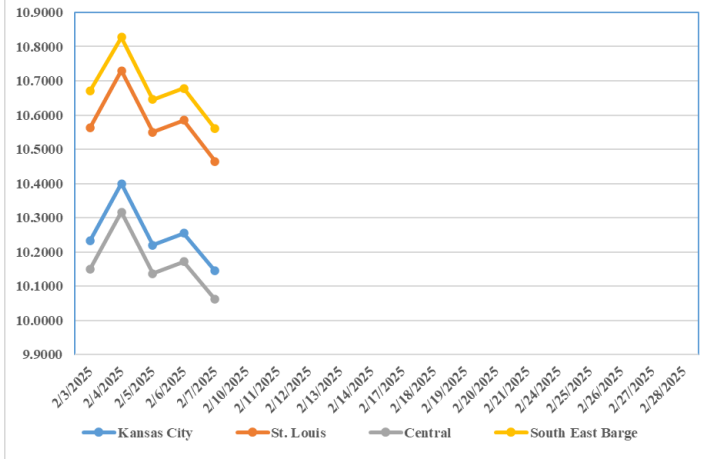
Compared to last week, Soybeans 0.05 to 0.08 higher, Wheat 0.20 to 0.24 higher, Corn 0.05 to 0.11 higher, Sorghum no trend due to lack of bids.

Area	#1 Soybeans	#2 Soft Wheat	#2 Corn	#2 Grain Sorghum
<b>Kansas City</b>				
Friday**	9.92-10.22	5.40	4.42-4.72	4.47
Monday	10.08-10.38	5.47	4.49-4.79	4.54
Tuesday	10.25-10.55	5.57	4.54-4.84	4.59
Wednesday	10.07-10.37	5.52	4.53-4.83	4.58
Thursday	10.11-10.41	5.68	4.55-4.85	4.60
Friday	10.00-10.30	5.63	4.48-4.78	4.53
<b>St. Louis</b>				
Friday**	10.38-10.43	5.70-5.85	4.85	---
Monday	10.56	5.77-5.89	4.96-4.97	---
Tuesday	10.73	5.87-5.99	5.00-5.01	---
Wednesday	10.55	5.82-5.94	5.00	---
Thursday	10.59	5.98-6.10	5.02	---
Friday	10.46-10.48	5.93-6.05	4.93-4.95	---
<b>Central</b>				
Friday**	9.92-10.02	5.30	4.42-4.47	---
Monday	10.08-10.18	5.37	4.49-4.54	---
Tuesday	10.25-10.35	5.47	4.54-4.59	---
Wednesday	10.07-10.17	5.42	4.53-4.58	---
Thursday	10.11-10.21	5.58	4.55-4.60	---
Friday	10.00-10.10	5.53	4.48-4.53	---
<b>S.E. MO</b>				
Friday**	10.45-10.52	---	4.92-5.04	---
Monday	10.63-10.68	---	4.99-5.12	---
Tuesday	10.80-10.85	---	5.02-5.17	---
Wednesday	10.60-10.67	---	4.63-4.75	---
Thursday	10.61-10.71	---	5.00-5.18	---
Friday	10.50-10.60	---	4.93-5.11	---

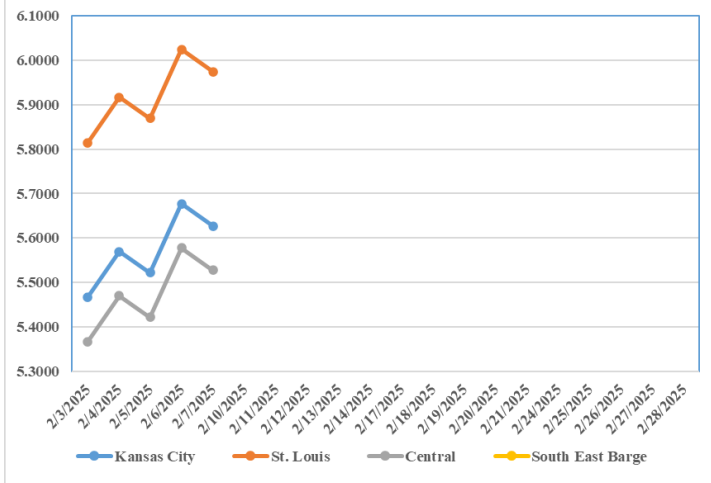
(PRICES PER BUSHEL) \*NEW CROP \*\*PREVIOUS WEEK'S PRICES  
\*Bids calculated using Kansas City, St. Louis, and St. Joseph bids

**MONTHLY GRAIN CROP**

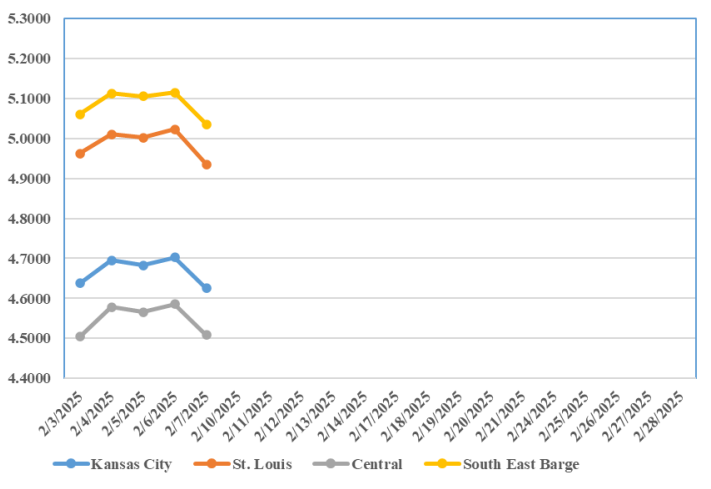
**February 2025 Soybean Bids**



**February 2025 Wheat Bids**



**February 2025 Corn Bids**



\*Axis value ranges may be updated to reflect data points.  
Only dates in which markets are trading and only current cash bids are represented.

**WHOLESALE FEEDSTUFFS PRICES (DOLLARS PER TON-BULK BASIS)**

Area	Cottonseed Meal 41%	Soybean Meal 46.5-48%	Corn Gluten Pellets 21%	Wheat Middlings
Kansas City	315.00	286.40	208.00	137.50
St. Louis	310.00	n/a	195.50	130.00

## GRAIN CRUSH AND CO-PRODUCTS PRODUCTION

**Total corn consumed** for alcohol and other uses was 521 million bushels in December 2024. Total corn consumption was up slightly from November 2024 but down 2 percent from December 2023. December 2024 usage included 92.8 percent for alcohol and 7.2 percent for other purposes. Corn consumed for beverage alcohol totaled 3.18 million bushels, down 18 percent from November 2024 and down 16 percent from December 2023. Corn for fuel alcohol, at 473 million bushels, was up less than 1 percent from November 2024 but down 2 percent from December 2023. Corn consumed in December 2024 for dry milling fuel production and wet milling fuel production was 92.0 percent and 8.0 percent, respectively.

**Dry mill co-product production** of distillers dried grains with solubles (DDGS) was 1.88 million tons during December 2024, up 2 percent from November 2024 but down 4 percent from December 2023. Distillers wet grains (DWG) 65 percent or more moisture was 1.29 million tons in December 2024, up 3 percent from November 2024 but down 8 percent from December 2023.

**Wet mill corn gluten feed production** was 256,980 tons during December 2024, down 1 percent from November 2024 but up 4 percent from December 2023. Wet corn gluten feed 40 to 60 percent moisture was 201,311 tons in December 2024, down 8 percent from November 2024 and down 4 percent from December 2023.

## OILSEED CRUSHINGS, PRODUCTIONS, CONSUMPTION, AND STOCKS

**Soybeans crushed** for crude oil was 6.53 million tons (218 million bushels) in December 2024, compared with 6.30 million tons (210 million bushels) in November 2024 and 6.13 million tons (204 million bushels) in December 2023. Crude oil produced was 2.57 billion pounds, up 3 percent from November 2024 and up 8 percent from December 2023. Soybean once refined oil production at 1.92 billion pounds during December 2024 increased 5 percent from November 2024 and increased 12 percent from December 2023.

**Canola seeds crushed** for crude oil was 225,039 tons in December 2024, compared with 211,013 tons in November 2024 and 192,796 tons in December 2023. Canola crude oil produced was 175 million pounds, up 5 percent from November 2024 and up 13 percent from December 2023. Canola once refined oil production, at 173 million pounds during December 2024, was up 2 percent from November 2024 and up 11 percent from December 2023.

**Cottonseed once refined** oil production, at 30.3 million pounds during December 2024, was down 26 percent from November 2024 and down 5 percent from December 2023.

**Edible tallow** production was 75.6 million pounds during December 2024, down 6 percent from November 2024 and down 11 percent from December 2023. Inedible tallow production was 301 million pounds during December 2024, down 6 percent from November 2024 and down 9 percent from December 2023. Technical tallow production was 116 million pounds during December 2024, down 14 percent from November 2024 and down 5 percent from December 2023. Choice white grease production, at 101 million pounds during December 2024, decreased 13 percent from November 2024 and decreased 10 percent from December 2023.

## MISSOURI WEEKLY HAY SUMMARY 2/6/2025

Above average temperatures and lack of any major winter weather is putting pressure on the hay market. Supplies of average cow type hay remain heavy with a lot of hay for sale in country. There isn't a lot of movement being reported and buyer interest is moderate at best. Although there is still a lot of feeding season left the available supplies seem more than adequate unless there is some significant extended weather event that sets in. Hay prices are unevenly steady to weak. The supply of hay is moderate to heavy, and demand is light to moderate. The Missouri Department of Agriculture has a hay directory at <https://apps.mda.mo.gov/haydirectory> or visit the University of Missouri Extension feed stuff finder at <https://feedstufffinder.org>

Alfalfa - Supreme 250.00-300.00, small square 8.00-12.00 per bale  
Alfalfa - Premium 200.00-250.00  
Alfalfa - Good 150.00-200.00, small square 6.00-10.00 per bale  
Alfalfa - Fair 125.00-150.00  
Mixed grass - Good/Premium 125.00-200.00  
Mixed grass-Fair/Good 80.00-125.00, small square 3.50-8.00 per bale  
Mixed grass - Fair 25.00-50.00 per large round bale  
Wheat straw - 4.00-7.00 per small square bale  
Corn Stalks - 10.00-25.00 per large round bale

Please Note: The above volumes (tonnage, acres, and bales) listed are for confirmed trades only, it does not include estimated volume (tonnage) for bids or offers to the trade. List your hay for sale at: [Hay Listing Online Form](#). Explanation of Hay Quality Guidelines: [Hay Quality Designation Guidelines](#). Glossary of Terms: [Livestock, Poultry, & Grain Hay Terms](#)

## MISSOURI WEEKLY SHEEP/GOAT AUCTION SUMMARY

Receipts: 3,717 Week Ago: 726 Last Year: 1,987

**SHEEP:** Feeder lambs Small and Medium 1-2 hair 30-50 lbs 210.00-322.50. Slaughter lambs Choice and Prime 1-3 hair 50-70 lbs 277.50-327.50; 70-80 lbs 265.00-290.00; 80-90 lbs 215.00-267.50; 90-100 lbs 187.50-235.00; 100-110 lbs 200.00-222.50; pkg 122 lbs 187.50. Choice 1-3 hair 50-60 lbs 260.00-290.00; 60-70 lbs 252.50-285.00; 70-80 lbs 180.00-265.00; 82 lbs 205.00-225.00. Good 1-2 pkg 51 lbs 250.00; 65-80 lbs 190.00-205.00. Slaughter ewes Utility and Good 1-3 pkg 142 lbs 112.50. Utility and Good 1-3 hair 90-185 lbs 100.00-117.50. Cull and Utility 1-2 hair 95-105 lbs 75.00-80.00. Cull and Utility 1-2 hair 70-95 lbs 50.00-75.00/hd; 12 hd 120 lbs 97.50/hd. Bucks 1-2 hair pkg 92 lbs 90.00; 100-185 lbs 100.00-175.00. Replacement ewes Medium and Large 1-2 2-4 yrs 145-165 lbs exp 155.00. Small and Medium 1-2 hair 1-2 yrs 60-75 lbs exp 150.00-247.50; 2-4 yrs 95-125 lbs exp 137.50-195.00; 4-6 yrs 92 lbs exp 120.00. Small and Medium 1-2 hair 1-2 yrs 110 lbs exp 240.00/hd; 2-4 yrs 105-140 lbs exp 145.00-250.00/hd; 2-4 yrs 115-160 lbs spr 235.00-300.00/hd; 4-6 yrs 115-130 lbs exp 155.00-185.00/hd, 155 lbs 240.00/hd. Families Small and Medium 1-2 1-2 yrs 89 lbs exp with <20 lb lambs 287.50/fam; 2-4 yrs 70-80 lbs exp with <20 lb lambs 175.00-285.00/fam; 85-140 lbs exp with <20 lb lambs 225.00-340.00/fam; 4-6 yrs 80-110 lbs exp with <20 lb lambs 170.00-340.00/fam.

**GOATS:** Feeder kids Selection 1 25-50 lbs 307.50-400.00. Selection 2 25-50 lbs 205.00-325.00. Selection 3 20-50 lbs 152.50-165.00, pygmies 120.00-200.00. Slaughter kids Selection 1 50-60 lbs 310.00-405.00; 60-80 lbs 302.50-385.00. Selection 2 50-60 lbs 250.00-320.00; 60-70 lbs 225.00-287.50; 70-85 lbs 225.00-305.00. Slaughter nannies/does Selection 1-2 60-80 lbs 140.00-190.00; 80-90 lbs 125.00-155.00; 90-135 lbs 112.50-195.00. Selection 1-2 100-120 lbs 185.00-190.00/hd. Slaughter bucks/billies 60-70 lbs pygmies 160.00-200.00; 70-80 lbs 137.50-210.00; 90-175 lbs 160.00-240.00. Wethers Selection 1-2 65-75 lbs 232.50-295.00; 85-95 lbs 160.00-275.00; 100-110 lbs 250.00-252.50. Wether kids Selection 1 pkg 51 lbs 375.00; pkg 67 lbs 300.00. Selection 2 pkg 67 lbs 300.00. Replacement nannies/does Selection 1-2 1-2 yrs 58 lbs exp 230.00; 2-4 yrs 60-70 lbs exp 147.50-197.50; 100-140 lbs exp 165.00-200.00; 115-120 lbs 290.00-305.00. Families Selection 1-2 2-4 yrs 70-80 lbs exp 160.00-280.00/fam, 90-100 lbs exp 297.50-360.00/fam 4-6 yrs 82 lbs exp 150.00/fam.

Explanatory Notes: Stage - Represents estimated lambing/kidding period (Open, Exp=exposed, Bred, Fall = Sep-Nov, Win = Dec-Feb, Spr = Mar-May, Sum=Jun-Aug; w/s = woolled and shorn; /hd= per head; /fam=per family  
All price CWT unless otherwise noted.

## MISSOURI DROUGHT MONITOR

Date	None	D0	D1	D2	D3	D4
02/04/25	65.49	24.66	9.85	0	0	0
01/28/25	60.70	24.59	14.71	0	0	0
02/06/24	41.08	43.85	15.07	0	0	0

Reflects percentage of Missouri impacted by drought. D0 Abnormally Dry; D1 Moderate Drought; D2 Severe Drought; D3 Extreme Drought; D4 Exceptional Drought

## NATIONAL DIRECT DELIVERED FEEDER PIG REPORT

1/31/25 Receipts: 115,999 Week ago: 86,009 Year Ago: 130,024  
Early weaned steady to weak and feeder pigs steady.  
Cash 51,473 head 56.00-99.00, weighted average 85.05  
Formula 41,248 head 49.61-92.36, weighted average 76.14  
Feeder pigs 40 pounds basis:  
Cash 23,278 head 95.00-114.00, weighted average 107.74

## NATIONAL DAILY DIRECT PRIOR DAY HOG REPORTS FOR 1/31/25

**BARROWS AND GILTS** (Carcass Basis): 2,302 head  
Base Carcass Price 78.00-85.00, weighted average 81.58

**SOWS (Live Basis):** 6,701 head  
300-500 lbs. 22.00-80.00  
Over 500 lbs. 56.68-79.00

## MISSOURI WEEKLY DIRECT SLAUGHTER CATTLE REPORT 2/07/25

Weekly Receipts: 200 Week ago: 120 Year ago: 280  
Trading as of Friday morning, light trade this week with flat dressed sales so far 2.00 lower and grid dressed sales inactive as bids are being passed

**LIVE STEERS & HEIFERS:** No sales reported  
**DRESSED STEERS & HEIFERS:** 4 loads Thu flat 328.00

**GRADE AND EIGHT (Grid):** No sales reported

Click here for the current [National Crop Progress](#)  
Click here for the current [Missouri Crop Progress](#)  
The current hay directory can be found at: [Hay Directory](#).