

# Weekly Market Summary

Published by:  
Missouri Department of Agriculture  
Ag Business Development Division  
Market News Program



Chris Chinn, Director  
Jill Wood, Division Director  
Tony Hancock, Editor  
<http://www.ams.usda.gov/marketnews.htm>  
[agmarketnews.mo.gov](http://agmarketnews.mo.gov)

Michael Kehoe, Governor

Volume XLV, Number 8 ♦ P.O. Box 630, Jefferson City, MO 65102 ♦ (573) 751-4211 ♦ Mon, Feb 24, 2025

## MISSOURI WEEKLY FEEDER CATTLE WEIGHTED AVERAGE REPORT

Feeder Cattle Receipts: 4,520 Week ago: 20,078 Year ago: 42,900  
Steers and Heifers Medium and Large 1—Weighted average weights and prices

### STEERS: Medium and Large 1

434 lbs. 391.76	622 lbs. 321.73	800 lbs. 274.50	1053 lbs. 236.50
482 lbs. 378.57	653 lbs. 290.20	872 lbs. 265.29	
527 lbs. 346.79	724 lbs. 288.63	938 lbs. 246.91	
572 lbs. 325.89	770 lbs. 270.97	960 lbs. 256.85	

### HEIFERS: Medium and Large 1

338 lbs. 365.02	573 lbs. 284.91	777 lbs. 244.54
387 lbs. 350.00	628 lbs. 263.47	829 lbs. 239.90
487 lbs. 315.51	682 lbs. 258.31	853 lbs. 238.29
530 lbs. 303.59	703 lbs. 247.63	

## MISSOURI STEER (HEIFER) STOCKER FORMULA 2/24/2025

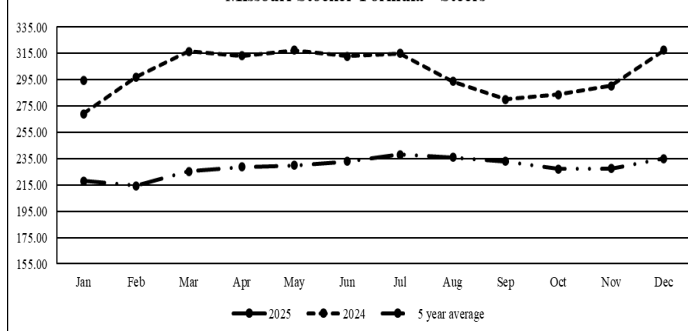
Monday's Missouri Stocker formula consists of 757 (670) head with a weighted average weight of 573.51 (558.58) lbs. and a price value of 327.61 (284.73), 10.65 lower (11.69 lower) than a week ago. \*Volume and price have been impacted by winter weather and lack of sales. \*This a rolling seven day calculated weighted value which combines all Feeder Steers reported by MDA/USDA Market News Service weighing from 400-649 lbs. in the Medium and Large 1 and Medium and Large 1-2 frame and muscle classifications, including all comment cattle except Brahman X. Heifer values are in parentheses.

## MISSOURI WEEKLY CATTLE AUCTION SUMMARY

Total Receipts: 5,261 Week Ago: 23,671 Year Ago: 49,899

Compared to last week, not enough auctions or receipts for a test of the market this week. A couple of sales last Monday with light offerings and then a couple of cow sales late week and over the weekend which also had very light offerings was the extent of cattle movement this week at reported locations. Record breaking cold over the entire state and snow that ranged from just a little in spots north to eleven inches in the south central and southeast areas of the state brought auction activity to a standstill for most of the week. As typical weather has already pulled a 180 and auctions should all be back to normal business this week. The monthly cattle on feed report was released on Friday. No big surprises for the most part, nearly everyone expected placements to be larger than a year ago as last January placements were recorded at a record low for a January report due to weather interruptions in contrast to this year in which January movement was very good with little to no issues. All that being said when the dust settled the actual number came in at 101.7 which was below the average pre report estimate of 103.00. Marketings were reported at 101.4 which was a bit less than expected and on feed numbers were right on at 99 percent of last year. All in all, the report was neutral to slightly bullish. Boxed beef cutouts were lower for the week. Choice closed on Friday at 310.77, down 3.93 and Select closed at 302.56, down 4.58 compared to last Friday. Negotiated feedlot sales as of the Friday afternoon report totaled near 41K head as of the 2:00 report cutoff time. Live sales were mostly 3.00-5.00 lower and dressed sales 5.00-6.00 lower. Live sales were reported mostly 199.00-201.00 and dressed sales mostly 315.00. The Missouri Stocker formula consists of 757 head with a weighted average weight of 573.51 lbs. and a price value of 327.61, 10.65 lower than last week. The steer/heifer spread is 42.88 per cwt.

Missouri Stocker Formula - Steers

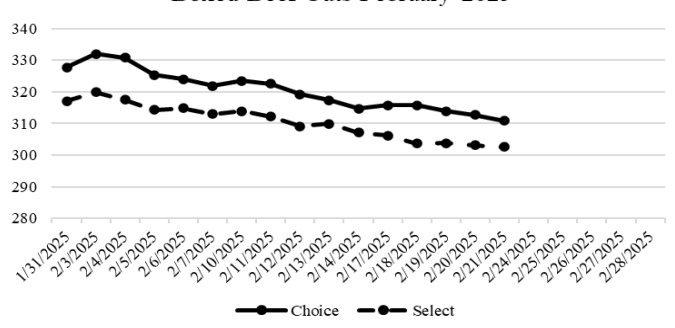


\*Graph is updated the first Monday of each month. Axis value ranges may be updated to reflect data points.

## NATIONAL BOXED BEEF CUTOUT VALUES

DATE	CHOICE	SELECT	TOTAL LOADS
2/17	315.70	306.23	87
2/18	315.77	303.71	140
2/19	313.89	303.76	121
2/20	312.63	303.18	101
2/21	310.77	302.56	174
5 Day Simple Average	313.75	303.89	

Boxed Beef Cuts February 2025



\*Axis value ranges may be updated to reflect data points.

## WEEKLY LIVESTOCK SLAUGHTER 02/22/25

	CATTLE	HOGS	SHEEP
Week to Date:	563,000	2,536,000	34,000
Last Week:	561,000	2,529,000	38,000
Last Year:	590,486	2,576,946	36,046

### SOUTHWEST MISSOURI WEEKLY SUMMARY

(Joplin and Springfield)

Receipts: 3,350 Week ago: 9,364 Year Ago: 20,006  
Too few feeders for an adequate market comparison. Slaughter cows mostly 5.00 to 9.00 higher. Slaughter bulls 2.00 to 3.00 higher.

#### FEEDER STEERS:

Medium and Large 1

400-500 lbs. 370.00-390.00  
500-600 lbs. 313.00-355.00  
600-700 lbs. 288.50-315.00  
700-800 lbs. 263.00-275.00  
850-900 lbs. 254.00-262.50  
900-950 lbs. 236.00-244.00  
47 hd 1053 lbs. 236.50

#### FEEDER HEIFERS:

Medium and Large 1

300-400 lbs. 350.00-375.00  
450-500 lbs. 310.00-312.00  
500-600 lbs. 272.00-297.00  
600-700 lbs. 250.00-269.00  
700-800 lbs. 243.00-250.50  
800-900 lbs. 230.00-239.00

#### FEEDER HOLSTEIN STEERS

Large 3

Scarce

Scarce

SLAUGHTER COWS: Breaking and Boning (70-85% lean) 133.00-148.00; high dressing 148.00-155.00; low dressing 125.00-134.00. Lean (85-90%) 116.00-134.00.

SLAUGHTER BULLS: Yield Grade 1-2 1170-2765 lbs. 160.00-183.00; high dressing 184.00-192.00; low dressing 146.00-159.00.

BRED COWS: Medium and Large 1 2-8 yrs 1030-1393 lbs 2nd/3rd stage 2300.00-2575.00. Medium and Large 1-2 2-8 yrs 885-1605 lbs 2nd/3rd stage 1600.00-2350.00, 1st stage 1400.00-2000.00 per head

BRED HEIFERS: Scarce

COW & CALF PAIRS: Medium and Large 1-2 >8 yrs 1272 lbs with 150-300 lb calves 2300.00 per pair

### SOUTH CENTRAL MISSOURI WEEKLY SUMMARY

(West Plains, Phillipsburg) (w/e 2/15/25)

Receipts: 973 Week ago: 4,930 Year Ago: 5,715  
Compared to last week, too few feeders for an adequate market comparison. Slaughter cows 2.00 to 4.00 higher. Slaughter bulls steady.

#### FEEDER STEERS:

Medium and Large 1

350-400 lbs. 410.00  
400-500 lbs. 375.00-405.00  
500-600 lbs. 312.50-352.50  
600-700 lbs. 292.00-310.00  
Pkg 913 lbs. 240.00

#### FEEDER HEIFERS:

Medium and Large 1

300-400 lbs. 335.00-360.00  
450-500 lbs. 315.00-342.50  
10 hd 566 lbs. 300.00  
600-700 lbs. 257.00-273.00

#### FEEDER HOLSTEIN STEERS:

Large 3

Scarce

Scarce

SLAUGHTER COWS: Breaking and Boning (70-85% lean) 124.00-137.00, high dressing 137.00-149.00; low dressing 116.00-119.00. Lean (85-90%) 112.00-128.00.

SLAUGHTER BULLS: Yield Grade 1-2 1225-2100 lbs. 160.00-170.00; high dressing 175.00-186.00; low dressing 122.00-149.00.

BRED COWS: Medium and Large 1-2 2-8 yrs 1100-1485 lbs 1100-1485 lbs 2nd/3rd stage 2000.00-2550.00, 1st stage 1975.00-2325.00 per head

COW & CALF PAIRS: Scarce

### WEST CENTRAL MISSOURI WEEKLY SUMMARY

(Kingsville, Windsor, Butler) (w/e 2/15/25)

Receipts: 4,134 Week ago: 5,905 Year ago: 9,918  
Compared to last week, steers steady to 5.00 lower, spots 10.00 to 15.00 lower. Heifer calves steady to 5.00 higher, yearlings steady to 5.00 lower. Slaughter cows mostly steady.

#### FEEDER STEERS:

Medium and Large 1

400-500 lbs. 369.00-398.00  
500-600 lbs. 334.00-370.50  
600-700 lbs. 285.00-347.50  
700-750 lbs. 284.00-295.50  
800-850 lbs. 268.50-274.50  
900-1000 lbs. 232.50-241.50

#### FEEDER HEIFERS:

Medium and Large 1

400-500 lbs. 338.00-392.50  
500-600 lbs. 284.00-335.00  
600-700 lbs. 273.00-303.00  
700-750 lbs. 256.00-267.00  
16 hd 802 lbs. 238.50  
13 hd 900 lbs. 230.00

SLAUGHTER BULLS: Yield Grade 1-2 1365-2245 lbs. 161.00-174.00; high dressing 176.00-185.00.

SLAUGHTER COWS: Breaking and Boning (70-85% lean) 122.00-144.00, high dressing 142.50-145.50. Lean (85-90%) 110.00-124.00..

BRED COWS: Scarce

COW & CALF PAIRS: Scarce

### NORTHEAST MISSOURI WEEKLY SUMMARY

(Bowling Green, Kingdom City, Palmyra)

Receipts: 1,505 Week ago: 5,179 Year ago: 4,313  
Compared to last week, a light offering due to bitter cold and snow, steers mostly pot loads over 600 lbs firm to higher undertone, heifers lightly tested with 500 lbs higher undertone. Slaughter cows mostly 4.00 to 8.00 higher.

#### FEEDER STEERS:

Medium and Large 1

400-500 lbs. 380.00-397.00  
500-600 lbs. 328.00-353.00  
600-700 lbs. 297.25-338.50  
700-800 lbs. 275.10-296.25  
800-900 lbs. 269.00-274.50  
900-1000 lbs. 248.10-256.85

#### FEEDER HEIFERS:

Medium and Large 1

450-500 lbs. 320.00  
500-600 lbs. 282.00-339.00  
19 hd 652 lbs. 273.50-245.00  
60 hd 839 lbs.

SLAUGHTER BULLS: Yield Grade 1-2 1475-2330 lbs. 160.00-170.00; high dressing 182.00-186.00.; low dressing 150.00-155.00.

SLAUGHTER COWS: Breaking and Boning (70-85% lean) 126.00-138.50; high dressing 137.00-156.00; low dressing 113.00-123.00. Lean (85-90%) 111.00-125.00.

SLAUGHTER STEERS: Choice and Prime 2-4 211.00-215.50. Choice 2-3 200.00-207.00.

SLAUGHTER HEIFERS: Choice 2-3 203.50-207.00. Select 1-3 189.50.

BRED COWS: Medium and Large 1 5-8 yrs 1400 lbs 3rd stage 3000.00; >5 yrs 1500 lbs 3rd stage 2600.00 per head. Medium and Large 1-2 2-8 yrs 1106-1450 lbs 2nd/3rd stage 2350.00-2600.00 per head

COW CALF PAIRS: Medium and Large 1 >5 yrs 1400-1450 lbs rebred 1st stage with >300 lb calves 3650.00-3850.00 per pair

### NORTH CENTRAL MISSOURI WEEKLY SUMMARY

(Macon, Unionville, Green City, New Cambria)

Receipts: 1,674 Week ago: 6,510 Year ago: 562  
Compared to last week, steers and heifers steady to 5.00 lower, spots 12.00 lower, except some light weight heifers and some yearling heifers steady to firm. Slaughter cows steady on a light test. \*\*Feeders and slaughter cows and bulls week ending 2/15/25)\*\*

#### FEEDER STEERS:

Medium and Large 1

400-500 lbs. 370.00-371.00  
500-600 lbs. 320.00-368.00  
600-700 lbs. 285.00-318.00  
700-800 lbs. 262.00-297.25  
18 hd 819 lbs. 264.50

#### FEEDER HEIFERS:

Medium and Large 1

400-500 lbs. 317.00-340.00  
500-600 lbs. 276.50-321.00  
600-700 lbs. 270.00-282.25  
700-750 lbs. 266.00-271.00

SLAUGHTER BULLS: Yield Grade 1-2 1555-2275 lbs. 155.00-169.00; high dressing 174.00-180.00.

SLAUGHTER COWS: Breaking and Boning (70-85% lean) 123.00-133.00. Lean (85-90%) 117.00-118.00

BRED COWS: Medium and Large 1-2 2-8 yrs 1190-1550 lbs 3rd stage 2475.00-2800.00, 1st stage 2150.00-2300.00; >8 yrs 1365-1500 lbs 3rd stage 2100.00-2300.00 per head

BRED HEIFERS: Medium and Large 1 <2 yrs 1050-1206 lbs 3rd stage 3150.00-3700.00 per head

### SOUTHEAST MISSOURI WEEKLY SUMMARY

(Jackson and Farmington) (w/e 2/15/25)

Receipts: 166 Week ago: 1,942 Year ago: 1,412

Too few feeders for a trend comparison. Slaughter cows and bulls steady.

#### FEEDER STEERS: Medium and Large 1

Pkg 605 lbs. 305.00

#### FEEDER HEIFERS: Medium and Large 1

400-500 lbs. 280.00-310.00  
500-550 lbs. 275.00-290.00  
Few 600-650 lbs. 230.00-240.00  
Few 700-750 lbs. 228.00-240.00

SLAUGHTER BULLS: Yield  
Grade 1-2 1205-1775 lbs 148.50-  
150.00, high dressing 156.00-  
174.50

SLAUGHTER COWS: Breaking  
and Boning (75-85% lean) 113.00-  
124.00; high dressing 126.50-  
141.00. Lean (85-90% lean) 90.00-  
104.50

BRED COWS: Medium and Large  
2 2-8 yrs 1070-1475 lbs 1st to 3rd  
stage 1100.00-2275.00 per head

COW & CALF PAIRS: Scarce

### EAST CENTRAL MISSOURI WEEKLY SUMMARY

(Cuba, Vienna) (w/e 2/8/25)

Receipts: 2,163 Week Ago: 3,392 Year ago: 3,629

Compared to last week, steers and heifers 2.00 to 10.00 lower, except heifers under 500 lbs mostly steady. Slaughter cows 1.00 to 4.00 higher.

#### FEEDER STEERS: Medium and Large 1

400-500 lbs. 332.50-365.00  
500-600 lbs. 311.00-371.00  
600-700 lbs. 285.00-347.00  
700-800 lbs. 259.00-297.00  
800-900 lbs. 257.00-259.50

#### FEEDER HEIFERS: Medium and Large 1

350-400 lbs. 337.50-377.00  
400-500 lbs. 310.00-374.00  
500-600 lbs. 271.00-322.00  
600-700 lbs. 251.00-276.00  
700-750 lbs. 240.00-266.00

SLAUGHTER BULLS: Yield  
Grade 1-2 1340-2185 lbs 150.00  
-165.00; high dressing 164.50-  
169.50; low dressing 119.00-  
147.50

SLAUGHTER COWS: Breaking  
and Boning, (70-85% lean) 122.00-  
133.50; high dressing 134.50-  
137.00. Lean (85-90%) 107.50-  
120.50.

BRED COWS: Medium and  
Large 1-2 2-8 yrs 1030-1490 lbs  
2nd/3rd stage 1750.00-2450.00;  
>8yrs 1358-1462 lbs 3rd stage  
1975.00-2125.00 per head

COW & CALF PAIRS: Scarce

### NORTHWEST MISSOURI WEEKLY SUMMARY

(Tina) (w/e 2/15/25)

Receipts: 2,181 Week Ago: 2,311 Year Ago: 2,060

Compared to last week, steers under 700 lbs mostly steady, 700-800 lbs 5.00 higher. Heifers uneven from 5.00 lower to 5.00 higher. Slaughter cows and bulls steady to firm.

#### FEEDER STEERS: Medium and Large 1

400-500 lbs. 365.00-398.00  
500-600 lbs. 340.00-386.00  
600-700 lbs. 295.00-325.00  
700-800 lbs. 274.50-301.00  
66 hd 904 lbs. 258.00

#### FEEDER HEIFERS: Medium and Large 1

350-400 lbs. 362.50-392.50  
400-500 lbs. 318.00-380.00  
500-600 lbs. 303.00-329.75  
600-650 lbs. 281.75-290.25  
78 hd 710 lbs. 268.50

SLAUGHTER BULLS:  
Yield Grade 1-2 1325-1835 lbs  
160.00-177.50

SLAUGHTER COWS: Breaking  
and Boning, (70-85% lean) 117.00-  
138.00; high dressing 137.00-  
144.50. Lean (85-90%) 110.00-  
133.00

BRED COWS: Scarce

COW/CALF PAIRS: Scarce

### AFTERNOON NATIONAL SLAUGHTER CATTLE REVIEW

In Kansas, negotiated cash trade has been mostly inactive on very light demand. In the Texas Panhandle, Nebraska and the Western Cornbelt, negotiated cash trade has been light on light demand. Not enough purchases in any region for a full market trend. The last reported market in the Southern Plains was Thursday with live FOB purchases at 199.00. Thursday in Nebraska, live FOB purchases traded from 199.50-200.00 and dressed delivered purchases traded at 315.00. The last reported market in the Western Cornbelt was last week, with live FOB purchases at 203.00 and dressed delivered purchases traded from 320.00-321.00.

#### Negotiated Cash Sales:

<b>Confirmed:</b>	9,752	<b>Week Ago:</b>	18,335	<b>Year Ago:</b>	4,786
<b>Week to date:</b>	41,073	<b>Week Ago:</b>	39,961	<b>Year Ago:</b>	41,616

<u>Live Basis</u>	<u>Steers</u>	<u>Heifers</u>
<b>Over 80% Choice</b>	198.00-201.00, avg 200.00	198.00-201.00, avg 199.08
<b>65-80% Choice</b>	199.00	199.00
<b>35-65% Choice</b>	199.00	199.00
<b>0-35% Choice</b>	-	-
<b>Total All Grades</b>	198.00-201.00, avg 199.92	198.00-201.00, avg 199.04
<u>Dressed Basis</u>		
<b>Over 80% Choice</b>	313.00-315.00, avg 314.75	315.00-317.00, avg 315.67
<b>65-80% Choice</b>	-	-
<b>35-65% Choice</b>	-	-
<b>0-35% Choice</b>	-	-
<b>Total All Grades</b>	313.00-315.00, avg 314.75	315.00-317.00, avg 315.67

<u>All Beef Type</u> <u>Steers/Heifers</u>	<u>Head</u>	<u>Avg Wt</u>	<u>Price Range</u>	<u>Wtd Avg</u>
Live FOB	7,735	1480.6	198.00-208.00	199.40
Live Del	205	1363.0	202.50-207.00	203.98
Dressed Del	1,675	974.2	313.00-317.00	314.67
Dressed FOB	102	965.5	310.00-313.00	311.98

#### WEEKLY COMMODITY FUTURES TRENDS

Compared to last week, Live Cattle uneven from 0.13 lower to 0.62 higher, Lean Hogs 3.40 to 4.93 lower, Feeder Cattle 0.92 to 2.45 higher.

#### Daily Futures Closes

	Mon.	Tues.	Wed.	Thu.	Fri.
Cattle Feb Apr Jun Aug Oct	Holiday	197.45 194.02 190.40 188.82 190.52	197.82 194.77 190.92 189.17 190.90	197.62 193.80 189.97 188.40 190.22	197.82 193.95 190.32 188.97 190.82
Lean Hogs Apr May Jun Jul Aug	Holiday	93.20 96.87 105.25 105.70 104.40	89.75 93.62 101.67 102.60 101.72	88.52 92.45 100.30 101.45 100.65	87.67 91.95 100.62 101.95 101.07
Fdr Cattle Mar Apr May Aug Sep	Holiday	269.72 269.10 267.32 269.72 268.52	269.02 268.60 267.05 269.65 268.45	266.82 266.37 265.07 268.30 267.65	267.95 267.55 265.92 269.30 268.72
Milk Feb Mar Apr	Holiday	20.33 19.60 19.20	20.32 19.08 18.81	20.32 19.20 18.92	20.22 19.06 18.71

## WEEKLY COMMODITY GRAIN FUTURES TRENDS

Compared to last week, Soybeans 0.03 to 0.07 higher, Wheat 0.06 to 0.10 lower, Corn uneven 0.02 to 0.05 lower, except Sep and Dec 0.02 higher, KC Wheat 0.07 to 0.12 lower, Soybean Meal uneven 0.10 to 1.10 lower for Mar and May, others 0.50 to 0.60 higher.

### Daily Grain Futures Closes

	Mon.	Tues.	Wed.	Thu.	Fri.
<b>Soybeans</b>					
Mar	Holiday	1038 1/2	1031 3/4	1045 1/2	1039 1/2
May		1055 1/2	1048 1/4	1063	1057 1/4
Jul		1071 1/2	1064	1077 3/4	1073
Aug		1069 3/4	1062 3/4	1075 1/4	1071 1/4
Sep		1055	1049	1060	1057 1/2
<b>Wheat</b>					
Mar	Holiday	604 3/4	590	585 1/2	590
May		617 3/4	606 1/2	600 1/4	604
Jul		630	619 3/4	614	617 1/4
Sep		643 3/4	634 1/4	628 3/4	631 3/4
Dec		661 1/4	652	647	649 3/4
<b>Corn</b>					
Mar	Holiday	502	497 1/2	498	491 1/4
May		515 3/4	514 1/4	512 3/4	505
Jul		518 1/2	515 1/4	516 3/4	509 1/2
Sep		480 1/2	479	582 1/2	477 1/2
Dec		477 1/2	476 1/2	479 1/2	475
<b>KC Wheat</b>					
Mar	Holiday	627 1/4	613 3/4	607 12	609 1/4
May		639 1/4	626 1/4	620	621 3/4
Jul		649 3/4	638	632	633 3/4
Sep		662 1/2	651 1/4	645 1/2	647 1/2
Dec		679 1/2	668 1/2	663 1/4	665 1/4
<b>SB Meal</b>					
Mar	Holiday	293.80	294.70	296.00	294.80
May		302.10	303.10	304.60	303.90
Jul		309.00	309.80	311.20	311.20
Aug		310.90	311.60	312.80	313.20
Sep		311.90	312.50	313.60	314.20

## MISSOURI GRAIN WEEKLY TRENDS

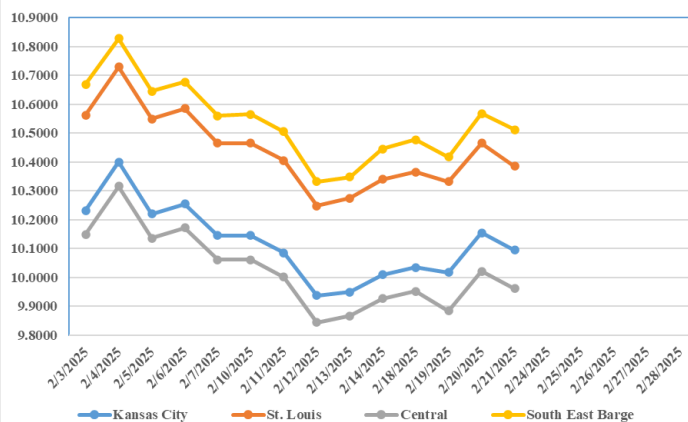
Compared to last week, Soybeans 0.04 to 0.06 higher, Wheat 0.10 to 0.12 lower, Corn 0.05 to 0.07 lower, Sorghum no trend due to lack of bids.

Area	#1 Soybeans	#2 Soft Wheat	#2 Corn	#2 Grain Sorghum
<b>Kansas City</b>				
Friday**	9.86-10.16	5.80	4.56-4.86	4.61
Monday	Holiday			
Tuesday	9.89-10.19	5.85	4.62-4.92	4.67
Wednesday	9.82-10.12	5.72	4.58-4.88	4.63
Thursday	9.96-10.26	5.66	4.58-4.88	4.63
Friday	9.90-10.20	5.70	4.51-4.81	4.56
<b>St. Louis</b>				
Friday**	10.33-10.35	5.95-6.22	5.01-5.04	—
Monday	Holiday			
Tuesday	10.36-10.38	6.00-6.25	5.07-5.08	—
Wednesday	10.29-10.38	5.87-6.12	5.01-5.06	—
Thursday	10.43-10.51	5.81-6.06	5.01-5.06	—
Friday	10.37-10.41	5.85-6.10	4.94-4.99	—
<b>Central</b>				
Friday**	9.86-9.96	5.70	4.56-4.61	—
Monday	Holiday			
Tuesday	9.89-9.99	5.75	4.62-4.67	—
Wednesday	9.82-9.92	5.62	4.58-4.63	—
Thursday	9.96-10.06	5.56	4.58-4.68	—
Friday	9.90-10.00	5.60	4.56-4.61	—
<b>S.E. MO</b>				
Friday**	10.35-10.51	—	5.05-5.19	—
Monday	Holiday	—		
Tuesday	10.41-10.54	—	5.12-5.25	—
Wednesday	10.37-10.47	—	5.13-5.21	—
Thursday	10.56-10.61	—	5.13-5.21	—
Friday	10.50-10.55	—	5.07-5.14	—

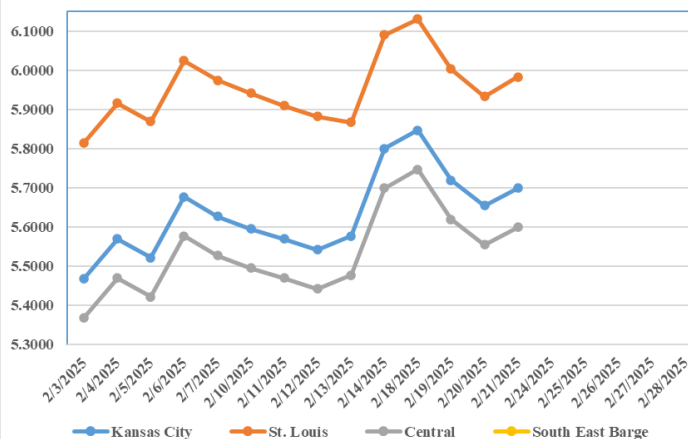
(PRICES PER BUSHEL) \*NEW CROP \*\*PREVIOUS WEEK'S PRICES  
\*Bids calculated using Kansas City, St. Louis, and St. Joseph bids

## MONTHLY GRAIN CROP

### February 2025 Soybean Bids



### February 2025 Wheat Bids



### February 2025 Corn Bids



\*Axis value ranges may be updated to reflect data points.  
Only dates in which markets are trading and only current cash bids are represented.

## WHOLESALE FEEDSTUFFS PRICES (DOLLARS PER TON-BULK BASIS)

Area	Cottonseed Meal 41%	Soybean Meal 46.5-48%	Corn Gluten Pellets 21%	Wheat Middlings
Kansas City	295.00	272.30	206.00	122.50
St. Louis	290.00	n/a	194.50	105.50



### CATTLE ON FEED

Cattle and calves on feed for the slaughter market in the United States for feedlots with capacity of 1,000 or more head totaled 11.7 million head on February 1, 2025. The inventory was 1 percent below February 1, 2024.

Placements in feedlots during January totaled 1.82 million head, 2 percent above 2024. Net placements were 1.76 million head. During January, placements of cattle and calves weighing less than 600 pounds were 365,000 head, 600-699 pounds were 395,000 head, 700-799 pounds were 505,000 head, 800-899 pounds were 382,000 head, 900-999 pounds were 105,000 head, and 1,000 pounds and greater were 70,000 head.

Marketings of fed cattle during January totaled 1.87 million head, 1 percent above 2024. Other disappearance totaled 60,000 head during January, 26 percent below 2024.

### Cattle on Feed and Annual Size Group Estimates

Cattle and calves on feed for slaughter market in the United States for feedlots with capacity of 1,000 or more head represented 82.7 percent of all cattle and calves on feed in the United States on January 1, 2025. This is comparable to the 82.7 percent on January 1, 2024.

Marketings of fed cattle for feedlots with capacity of 1,000 or more head during 2024 represented 87.2 percent of total cattle marketed from all feedlots in the United States, down slightly from 87.3 percent during 2023.

### MISSOURI WEEKLY HAY SUMMARY 2/20/2025

Extreme cold air arrived this week, setting new record lows in some location's midweek. Snow fall ranged from just a bit on the northern border to ten or eleven inches in southern areas of state. Transportation of hay was pretty much brought to a standstill and getting around to feed wasn't much better but had to be done. If there was any plus side the snow was a dry snow so even though livestock had to deal with the cold at least they were able to stay dry. Hay prices are unevenly steady to weak. The supply of hay is moderate to heavy there remains a lot of hay left in the country with plenty for sale if anyone would find themselves needing more, and demand is light to moderate. The Missouri Department of Agriculture has a hay directory at <https://apps.mda.mo.gov/haydirectory> or visit the University of Missouri Extension feed stuff finder at <https://feedstufffinder.org>  
Alfalfa - Supreme 250.00-300.00, small square 8.00-12.00 per bale  
Alfalfa - Premium 200.00-250.00  
Alfalfa - Good 150.00-200.00, small square 6.00-10.00 per bale  
Alfalfa - Fair 125.00-150.00  
Mixed grass - Good/Premium 125.00-200.00  
Mixed grass-Fair/Good 80.00-125.00, small square 3.50-8.00 per bale  
Mixed grass - Fair 25.00-50.00 per large round bale  
Wheat straw - 4.00-7.00 per small square bale  
Corn Stalks - 10.00-25.00 per large round bale

Please Note: The above volumes (tonnage, acres, and bales) listed are for confirmed trades only, it does not include estimated volume (tonnage) for bids or offers to the trade. List your hay for sale at: [Hay Listing Online Form](#). Explanation of Hay Quality Guidelines: [Hay Quality Designation Guidelines](#). Glossary of Terms: [Livestock, Poultry, & Grain Hay Terms](#)

### MISSOURI WEEKLY SHEEP/GOAT AUCTION SUMMARY

Receipts: 568 Week Ago: 3,717 Last Year: 1,089  
Week ending 2/15/25

SHEEP: Feeder sheep Small and Medium 1-2 hair 26-53 lbs 300.00-325.00. Slaughter Lambs Choice and Prime 1-3 hair 50-75 lbs 300.00-337.50; pkg 84 lbs 265.00; pkg 101 lbs 270.00. Choice 1-2 hair pkg 67 lbs 285.00. Ewes Utility and Good 1-2 94-133 lbs 85.00-95.00. Bucks 1-3 pkg buck lambs 138 lbs 225.00. pkg 159 lbs 130.00. Replacement Ewes Medium and Large 1-2 wool 2-4 yrs exp 200 lbs 140.00. Medium 1-2 hair 2-4 yrs exp 80-130 lbs 125.00-160.00. Medium 2 hair 2-4 yrs exp 101 lbs 115.00.

GOATS: Feeder kids Selection 1 pkg 54 lbs 335.00. Selection 2 pkg 46 lbs 260.00. Selection 2-3 pkg 36 lbs 220.00.

Explanatory Notes: Stage - Represents estimated lambing/kidding period (Open, Exp=exposed, Bred, Fall = Sep-Nov, Win = Dec-Feb, Spr = Mar-May, Sum=Jun-Aug; w/s = woolled and shorn; /hd= per head; /fam=per family  
All price CWT unless otherwise noted.

### MISSOURI DROUGHT MONITOR

Date	None	D0	D1	D2	D3	D4
02/18/25	60.54	29.79	9.67	0	0	0
02/11/25	58.84	31.31	9.85	0	0	0
02/20/24	36.54	44.56	18.90	0	0	0

Reflects percentage of Missouri impacted by drought. D0 Abnormally Dry; D1 Moderate Drought; D2 Severe Drought; D3 Extreme Drought; D4 Exceptional Drought

### NATIONAL DIRECT DELIVERED FEEDER PIG REPORT

2/21/25 Receipts: 105,608 Week ago: 128,132 Year Ago: 108,516  
Early weaned pigs 5.00 lower and feeder pigs 3.00 higher.  
Cash 65,950 head 51.00-94.00, weighted average 78.71  
Formula 23,008 head 54.16-91.60, weighted average 71.73  
Feeder pigs 40 pounds basis:  
Cash 16,650 head 106.00-126.00, weighted average 115.58

### NATIONAL DAILY DIRECT PRIOR DAY HOG REPORTS

BARROWS AND GILTS (Carcass Basis): 1,424 head  
Base Carcass Price 85.00-93.00, weighted average 89.43

SOWS (Live Basis): 6,770 head  
300-500 lbs. 29.00-88.45  
Over 500 lbs. 64.80-88.18

### MISSOURI WEEKLY DIRECT SLAUGHTER CATTLE REPORT 2/21/25

Weekly Receipts: 160 Week ago: 240 Year ago: 320  
Trading as of Friday morning, light trade this week with flat dressed sales so far 5.00 lower and grid dressed sales inactive as bids are being passed

LIVE STEERS & HEIFERS: No sales reported  
DRESSED STEERS & HEIFERS: 4 loads Thu flat 315.00

GRADE AND EIGHT (Grid): 3 loads Thu 336.00

Click here for the current [National Crop Progress](#)  
Click here for the current [Missouri Crop Progress](#)  
The current hay directory can be found at: [Hay Directory](#).