

# Weekly Market Summary

Published by:  
Missouri Department of Agriculture  
Ag Business Development Division  
Market News Program



Chris Chinn, Director  
Jill Wood, Division Director  
Tony Hancock, Editor  
<http://www.ams.usda.gov/marketnews.htm>  
<http://www.ams.usda.gov/marketnews.htm>

Michael Kehoe, Governor

Volume XLV, Number 9 ♦ P.O. Box 630, Jefferson City, MO 65102 ♦ (573) 751-4211 ♦ Mon, Mar 3, 2025

## MISSOURI WEEKLY FEEDER CATTLE WEIGHTED AVERAGE REPORT

Feeder Cattle Receipts: 32,435 Week ago: 4,520 Year ago: 29,574  
Steers and Heifers Medium and Large 1—Weighted average weights and prices

### STEERS: Medium and Large 1

319 lbs.	451.41	524 lbs.	365.01	727 lbs.	292.23	916 lbs.	256.50
376 lbs.	428.27	575 lbs.	347.27	773 lbs.	275.25	982 lbs.	247.28
426 lbs.	414.01	624 lbs.	330.18	825 lbs.	271.42		
474 lbs.	393.87	675 lbs.	310.56	880 lbs.	262.76		

### HEIFERS: Medium and Large 1

323 lbs.	394.25	528 lbs.	320.89	724 lbs.	261.98	908 lbs.	227.58
376 lbs.	369.88	573 lbs.	307.18	775 lbs.	259.60		
427 lbs.	355.31	626 lbs.	291.13	825 lbs.	244.99		
475 lbs.	340.49	671 lbs.	276.80	864 lbs.	238.21		

## MISSOURI STEER (HEIFER) STOCKER FORMULA 3/3/2025

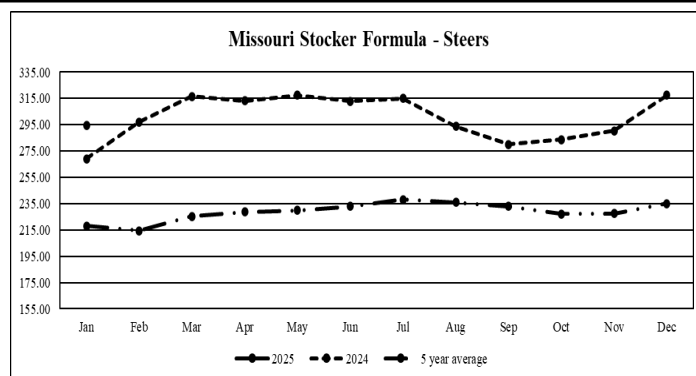
Monday's Missouri Stocker formula consists of **5840 (6438)** head with a weighted average weight of **551.56 (550.91)** lbs. and a price value of **348.65 (307.06)**, 21.04 higher (22.33 higher) than a week ago. \*Volume and price have been impacted by winter weather and lack of sales from the previous week \*

This is a rolling seven day calculated weighted value which combines all Feeder Steers reported by MDA/USDA Market News Service weighing from 400-649 lbs. in the Medium and Large 1 and Medium and Large 1-2 frame and muscle classifications, including all comment cattle except Brahman X. Heifer values are in parentheses.

## MISSOURI WEEKLY CATTLE AUCTION SUMMARY

Total Receipts: 37,523 Week Ago: 5,411 Year Ago: 33,883

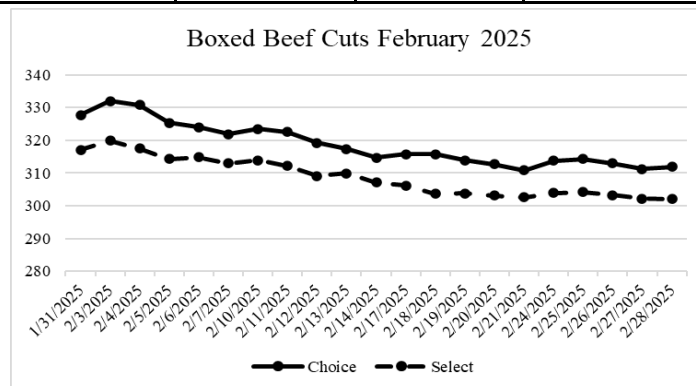
Compared to two weeks ago feeder steers and heifers sold fully 10.00 higher. There was not enough auctions or receipts last week for a market trend, and several barns had to look back a full three weeks since the last test due to winter weather cancellations. Some instances especially lighter weight calves suitable for grazing saw sharply higher markets as recent losses in the market was erased and added too. Buyers were aggressive this week and eager to get buying summer grazers. Other than mud this week was a huge change from last week as the state went from record lows just a week ago to well above average this week. A green tint is showing in parts of southern Missouri and a few areas in west central and southwest Missouri had enough wind to dry things out and starting to see some limited amounts of fertilizer being spread. Feeder cattle markets have climbed back to record territory with very good demand being found not only for grazing calves but also yearlings and replacement stock, even the cull market for cows and bulls is once again seeing some impressive prices. Joplin Regional Stockyards sold a high dressing bull this week that totaled up to just over \$4400.00 and they we not the only barn that had bulls meeting or exceeding 2.00 per lb. Ozark Regional Stockyards sold some young cows bred back in the 1<sup>st</sup> stage with 300 lb. calves at their side for \$4550.00. Some stick out feeder sales around the state included 30 head of 422 lb. steers at Springfield Livestock Marketing Center for 430.00. New Cambria Livestock Auction sold 21 head of 532 lb. steers for 390.50. MO Kan Livestock Market sold 25 head of 603 lb. steers for 353.00. 118 head of 741 lb. steers sold at Windsor Livestock Auction for 307.75. Interstate Regional Stockyards sold 66 head of 789 lb. steers for 288.75. A load of 857 lb. steers sold at Mid Missouri Stockyards for 276.00. Joplin Regional Stockyards sold 93 head of 921 lb. steers for 258.50. A few stick out sales of heifers included 41 head of 542 lb. heifers at Callaway Livestock Center for 256.50. Windsor Livestock Market sold 103 head of 636 lb. heifers for 310.50. A load of 713 lb. heifers at F and T Livestock Market sold for 276.50. Unionville Livestock Market sold near 100 head of fancy replacement heifers from 700-875 lbs. which sold for 2260.00-2425.00 per head. Boxed beef cutouts were mixed for the week. Choice closed on Friday at 311.83, up 1.05 and Select closed at 302.05, down 0.51 compared to last Friday. Negotiated feedlot sales as of the Friday afternoon report totaled just under 33K head as of the 2:00 report cutoff time. Live and dressed sales were mostly 2.00 lower. Live sales were reported mostly 197.00-199.00 and dressed sales mostly 313.00. The Missouri Stocker formula consists of 5840 head with a weighted average weight of 551.56 lbs. and a price value of 348.65, 21.04 higher than last week and just a few cents lower than the record high set earlier in the week. The steer/heifer spread is 41.59 per cwt.



\*Graph is updated the first Monday of each month. Axis value ranges may be updated to reflect data points.

## NATIONAL BOXED BEEF CUTOUT VALUES

DATE	CHOICE	SELECT	TOTAL LOADS
02/24	313.73	303.97	85
02/25	314.32	304.13	144
02/26	312.90	303.24	158
02/27	311.18	302.13	163
02/28	311.83	302.05	101
5 Day Simple Average	312.79	303.10	



\*Axis value ranges may be updated to reflect data points.

## WEEKLY LIVESTOCK SLAUGHTER 02/29/25

	CATTLE	HOGS	SHEEP
Week to Date:	566,000	2,538,000	39,000
Last Week:	569,000	2,522,000	34,000
Last Year:	594,236	2,550,467	39,624

### SOUTHWEST MISSOURI WEEKLY SUMMARY

(Joplin and Springfield)

Receipts: 9,062 Week ago: 3,350 Year Ago: 14,260  
Compared to two weeks ago, steers and heifers mostly 7.00 to 15.00 higher, spots up to 25.00 higher. Slaughter cows early week 1.00 to 3.00 lower, late week slaughter cows steady to 2.00 higher and bulls 2.00 to 4.00 higher.

#### FEEDER STEERS: Medium and Large 1

300-400 lbs.	425.00-480.00
400-500 lbs.	380.00-462.00
500-600 lbs.	322.00-385.00
600-700 lbs.	258.00-347.00
700-800 lbs.	261.50-299.85
800-900 lbs.	257.50-274.00
900-1000 lbs.	240.00-258.50

#### FEEDER HEIFERS: Medium and Large 1

300-400 lbs.	350.00-420.00
450-500 lbs.	329.00-397.00
500-600 lbs.	280.00-326.00
600-700 lbs.	254.00-302.00
700-800 lbs.	245.00-277.00
800-850 lbs.	240.50-243.00

#### FEEDER HOLSTEIN STEERS Large 3

350-400 lbs.	255.00-280.00
400-500 lbs.	185.00-270.00
500-600 lbs.	220.00-265.00
600-700 lbs.	210.00-243.00
700-800 lbs.	201.00-225.00
800-850 lbs.	204.00-205.00
Pkg 933 lbs.	185.00

BRED COWS: Medium and Large 1 2-8 yrs 1120-1480 lbs 2nd/3rd stage 2300.00-3400.00, 1st stage 2200.00. Medium and Large 1-2 2-4 yrs 1070-1120 lbs 2nd/3rd stage 2900.00-3000.00; 2-8 yrs 1020-1405 lbs 2nd/3rd stage 1750.00-3000.00, 1st stage 1950.00-2675.00 per head

BRED HEIFERS: Medium and Large 1 2-4 yrs 1040 lbs 2nd/3rd stage 3525.00 per head

SLAUGHTER COWS: Breaking and Boning (70-85% lean) 130.00-146.00; high dressing 142.50-160.00; low dressing 110.00-130.00. Lean (85-90%) 112.50-132.00.

SLAUGHTER BULLS: Yield Grade 1-2 1220-2480 lbs. 160.00-182.50; high dressing 179.00-210.00; low dressing 127.50-170.00

COW & CALF PAIRS: Medium and Large 1 >8 yrs 1260 lbs rebred 1st stage with >300 lb calves 3700.00. Medium and Large 1-2 2-8 yrs 1040 lbs with 150-300 lb calves 3000.00; 2-4 yrs 1040-1060 lbs rebred 1st stage with >30 lb calves 3700.00-4000.00; 2-8 yrs 1065-1105 lbs with >300 lb calves 2900.00-3300.00; >8 yrs 1140-1160 lbs some rebred 1st stage with >300 lb calves 2700.00-3300.00 per pair

### SOUTH CENTRAL MISSOURI WEEKLY SUMMARY

(West Plains, Phillipsburg)

Receipts: 5,096 2 Weeks ago: 973 Year Ago: 4,986  
Compared to three weeks ago, steers and heifers mostly steady to 10.00 higher, spots up to 20.00 higher. Slaughter cows 3.00 to 8.00 higher. Slaughter bulls steady to 4.00 higher.

#### FEEDER STEERS: Medium and Large 1

300-400 lbs.	395.00-475.00
400-500 lbs.	370.00-430.00
500-600 lbs.	319.00-376.00
600-700 lbs.	290.00-336.00
700-800 lbs.	270.50-304.00
800-900 lbs.	265.00-277.50
14 hd 906 lbs.	254.00

#### FEEDER HEIFERS: Medium and Large 1

300-400 lbs.	360.00-400.00
400-500 lbs.	325.00-374.00
500-600 lbs.	286.00-340.00
600-700 lbs.	260.00-292.00
700-750 lbs.	246.00-259.00

#### FEEDER HOLSTEIN STEERS: Large 3

Scarce Scarce

SLAUGHTER COWS: Breaking and Boning (70-85% lean) 128.00-143.00, high dressing 142.00-158.00; low dressing 114.00-131.00. Lean (85-90%) 105.00-129.00

SLAUGHTER BULLS: Yield Grade 1-2 1245-2280 lbs. 149.00-174.00; high dressing 175.00-191.00; low dressing 130.00-161.00.

BRED COWS: Medium and Large 1 2-8 yrs 1085-1120 lbs 2nd/3rd stage 2100.00-2150.00. Medium and Large 1-2 2-8 yrs 935-1465 lbs 2nd/3rd stage 1750.00-3050.00, 1st stage 1900.00-2400.00 per head

COW & CALF PAIRS: Medium and Large 1 2-8 yrs 1230-1392 lbs rebred 1st stage with 150-300 lb calves 3800.00-4550.00. Medium and Large 1-2 2-8 yrs 1200 lbs with 150-300 lb calves 2600.00 per pair

### WEST CENTRAL MISSOURI WEEKLY SUMMARY

(Kingsville, Windsor, Butler)

Receipts: 6,754 2 Weeks ago: 4,134 Year ago: 5,461  
Compared to two weeks ago, steers and heifers 5.00 to 10.00 higher, spots 20.00 higher. Slaughter cows 2.00 to 6.00 higher.

#### FEEDER STEERS: Medium and Large 1

400-500 lbs.	371.00-442.50
500-600 lbs.	332.00-400.00
600-700 lbs.	299.00-353.00
700-800 lbs.	265.00-310.00
800-900 lbs.	256.50-282.50
900-950 lbs.	240.00-257.50

#### FEEDER HEIFERS: Medium and Large 1

400-500 lbs.	320.00-396.00
500-600 lbs.	294.00-353.00
600-700 lbs.	267.00-310.50
700-800 lbs.	256.50-271.00
Pkg 885 lbs.	234.00

SLAUGHTER BULLS: Yield Grade 1-2 1270-2155 lbs. 154.00-181.00; high dressing 181.00-189.00; low dressing 128.00-148.50.

BRED COWS: Medium and Large 1-2 >5 yrs 1126-1153 lbs 3rd stage 2275.00-2400.00 per head

SLAUGHTER COWS: Breaking and Boning (70-85% lean) 128.00-149.50, high dressing 142.00-155.00. Lean (85-90%) 110.00-132.00..

COW & CALF PAIRS: Medium and Large 1-2 5-8 yrs 1350 lbs with 150-300 lb calves 3075.00 per pair

### NORTHEAST MISSOURI WEEKLY SUMMARY

(Bowling Green, Kingdom City, Palmyra)

Receipts: 4,658 Week ago: 1,505 Year ago: 5,238  
Compared to last week's light receipts, steers under 600 lbs higher undertone, over 600 lbs firm to 5.00 higher on comparable sales. Heifers all sold with a higher undertone on limited comparisons. Slaughter cows mostly 5.00 to 12.00 higher.

#### FEEDER STEERS: Medium and Large 1

400-500 lbs.	365.00-411.00
500-600 lbs.	335.00-372.00
600-700 lbs.	296.00-348.50
700-800 lbs.	269.00-299.50
800-900 lbs.	266.75-271.00
59 hd 927 lbs.	260.25

#### FEEDER HEIFERS: Medium and Large 1

300-400 lbs.	360.00-395.00
400-500 lbs.	327.00-368.00
500-600 lbs.	296.00-344.00
600-700 lbs.	267.00-309.00
700-800 lbs.	252.75-276.50
800-850 lbs.	250.50-252.00

SLAUGHTER BULLS: Yield Grade 1-2 1445-2500 lbs. 171.00-187.00; high dressing 179.00-201.00.; low dressing 146.00-164.00.

SLAUGHTER STEERS: Choice 2 -3 201.50-209.00. Select and Choice 1-3 199.00. Select 1-2 190.00-192.00

SLAUGHTER COWS: Breaking and Boning, (70-85% lean) 127.00-148.00; high dressing 140.50-165.00; low dressing 109.00-138.00. Lean (85-90%) 116.00-136.00.

SLAUGHTER HEIFERS: Select and Choice 1-3 199.00. Select 1-2 188.00.

BRED COWS: Scarce

COW CALF PAIRS: Scarce

### NORTH CENTRAL MISSOURI WEEKLY SUMMARY

(Macon, Unionville, Green City, New Cambria)

Receipts: 5,455 Week ago: 150 Year ago: 578  
Compared to three weeks ago, steers and heifers mostly steady to 5.00 higher, spots 10.00 to 15.00 higher. Slaughter cows 5.00 to 10.00 higher, spots 15.00 higher.

\*Some sale barns on a bi-weekly schedule and may not have a sale each week.

#### FEEDER STEERS: Medium and Large 1

400-500 lbs.	380.00-437.00
500-600 lbs.	329.00-400.00
600-700 lbs.	290.50-355.00
700-800 lbs.	271.00-309.50
800-900 lbs.	253.00-278.25

#### FEEDER HEIFERS: Medium and Large 1

400-500 lbs.	327.50-374.00
500-600 lbs.	296.00-339.50
600-700 lbs.	273.00-308.00
700-800 lbs.	255.75-278.50
800-900 lbs.	241.50-255.00

SLAUGHTER BULLS: Yield Grade 1-2 1400-2630 lbs. 167.00-199.00; couple low dressing 158.00-166.00

BRED COWS: Scarce

SLAUGHTER COWS: Breaking and Boning (70-85% lean) 128.00-149.00, high dressing 138.00-158.00. Lean (85-90%) 112.00-132.00

BRED HEIFERS: Scarce

### SOUTHEAST MISSOURI WEEKLY SUMMARY

(Jackson and Farmington)

Receipts: 2,344 2 Weeks ago: 166 Year ago: 1,122  
Compared to three weeks ago, 300-400 lb steers 20.00 to 24.00 higher, rest of the offering steady to 13.00 higher. Slaughter cows and bulls 3.00 to 5.00 higher.

#### FEEDER STEERS: Medium and Large 1

400-500 lbs. 335.00-422.00  
500-600 lbs. 292.00-342.00  
600-700 lbs. 264.00-321.00  
700-800 lbs. 244.00-289.00  
800-900 lbs. 237.00-268.00  
900-950 lbs. 227.00-244.00

#### FEEDER HEIFERS: Medium and Large 1

300-400 lbs. 329.00-380.00  
400-500 lbs. 292.00-352.00  
500-600 lbs. 266.00-320.00  
600-700 lbs. 245.00-291.00  
700-800 lbs. 235.00-254.00

SLAUGHTER BULLS: Yield  
Grade 1-2 905-2430 lbs 133.00-  
154.00, high dressing 152.00-  
188.00

SLAUGHTER COWS: Breaking  
and Boning (75-85% lean) 118.00-  
126.00; high dressing 121.00-  
157.00. Lean (85-90% lean) 90.00-  
112.00

BRED COWS: Medium and Large  
2 2-8 yrs 1015-1200 lbs 1st to 3rd  
stage 1650.00-2150.00 per head

COW & CALF PAIRS: Medium  
and Large 2 2-8 yrs 1000-1050 lbs  
with 150-300 lb calves 1975.00-  
2450.00 per pair

### EAST CENTRAL MISSOURI WEEKLY SUMMARY

(Cuba, Vienna)

Receipts: 2,231 3 Weeks Ago: 2,163 Year ago: 1,218  
Compared to three weeks ago, steers and heifers steady to 20.00 higher with the greatest advance under 550 lbs. Slaughter cows 6.00 to 12.00 higher.

#### FEEDER STEERS: Medium and Large 1

400-500 lbs. 347.50-421.00  
500-600 lbs. 322.00-378.00  
600-700 lbs. 291.00-336.00  
700-800 lbs. 264.00-296.50  
800-900 lbs. 252.00-282.50

#### FEEDER HEIFERS: Medium and Large 1

350-400 lbs. 347.50-372.00  
400-500 lbs. 310.00-374.00  
500-600 lbs. 291.00-330.00  
600-700 lbs. 268.50-294.00  
700-800 lbs. 242.00-266.00

SLAUGHTER BULLS: Yield  
Grade 1-2 1440-2000 lbs 160.00-  
169.00; high dressing ind 144.00-  
181.00; low dressing 113.00-  
158.00

SLAUGHTER COWS: Breaking  
and Boning, (70-85% lean) 128.00-  
142.00; high dressing 144.00-  
149.00. Lean (85-90%) 115.00-  
132.00.

BRED COWS: Medium and  
Large 1 2-8 yrs 1316 lbs 3rd  
stage 3350.00. Medium and  
Large 1-2 2-4 yrs 930-1300 lbs  
1st to 3rd stage 1850.00-2775.00  
per head

COW & CALF PAIRS: Medium  
and Large 1 2-4 yrs 1050 lbs with  
150-300 lb calves 3200.00; 1150  
lbs rebred 1st stage with 150-300  
lb calves 4200.00 per pair

### NORTHWEST MISSOURI WEEKLY SUMMARY

(Tina)

Receipts: 1,371 2 Weeks Ago: 2,181 Year Ago: 1,020  
Compared to two weeks ago, steers and heifers mostly steady. Slaughter cows 3.00 to 7.00 higher.

#### FEEDER STEERS: Medium and Large 1

400-450 lbs. 379.00-415.00  
500-600 lbs. 330.25-353.00  
600-700 lbs. 299.00-325.00  
700-800 lbs. 280.50-300.00  
62 hd 888 lbs. 265.50

#### FEEDER HEIFERS: Medium and Large 1

Pkg 350 lbs. 370.00  
400-500 lbs. 319.00-359.00  
500-600 lbs. 296.00-331.00  
600-650 lbs. 280.25-298.50  
11 hd 727 lbs. 264.50

SLAUGHTER BULLS:  
Yield Grade 1-2 1635-2120 lbs  
176.50-179.00.

SLAUGHTER COWS: Breaking  
and Boning, (70-85% lean) 126.00-  
147.50; high dressing 145.00-  
157.50. Lean (85-90%) 121.00-  
142.00

BRED COWS: Medium and  
Large 1-2 2-4 yrs 1100-1210 lbs  
2nd/3rd stage 2200.00-2300.00.  
Large 1-2 2-8 yrs 1592 lbs  
2nd/3rd stage 2285.00 per head

COW/CALF PAIRS: Scarce

### AFTERNOON NATIONAL SLAUGHTER CATTLE REVIEW

So far for Friday in the Southern Plains, negotiated cash trade has been moderate on light to moderate demand. Compared to last week, live FOB purchases traded 2.00 lower at 197.00. In Nebraska and the Western Cornbelt, negotiated cash trade has been light on light to moderate demand. In Nebraska, a few live FOB purchases traded at 198.00, however, not enough for a full market trend. Last week live FOB purchases traded from 199.00-200.00. Thus far for the week, dressed delivered purchases have traded 2.00 lower at 313.00. In the Western Cornbelt, a few live FOB purchases traded at 198.00, however, not enough for a full market trend. Last week live FOB purchases traded from 199.00-201.00 and dressed delivered purchases traded at 315.00.

#### Negotiated Cash Sales:

<b>Confirmed:</b>	21,911	<b>Week Ago:</b>	9,752	<b>Year Ago:</b>	11,211
<b>Week to date:</b>	32,965	<b>Week Ago:</b>	41,073	<b>Year Ago:</b>	69,207

<u>Live Basis</u>	<u>Steers</u>	<u>Heifers</u>
<b>Over 80% Choice</b>	197.00-199.00, avg 198.03	197.00-199.00, avg 197.84
<b>65-80% Choice</b>	195.00-197.00, avg 196.69	197.00-198.00, avg 197.07
<b>35-65% Choice</b>	197.00	197.00
<b>0-35% Choice</b>	-	-
<b>Total All Grades</b>	195.00-199.00, avg 197.66	197.00-199.00, avg 197.32
<b><u>Dressed Basis</u></b>		
<b>Over 80% Choice</b>	312.00-315.00, avg 313.06	313.00
<b>65-80% Choice</b>	313.00	-
<b>35-65% Choice</b>	-	-
<b>0-35% Choice</b>	-	-
<b>Total All Grades</b>	312.00-315.00, avg 313.05	313.00

<u>All Beef Type Steers/Heifers</u>	<u>Head</u>	<u>Avg Wt</u>	<u>Price Range</u>	<u>Wtd Avg</u>
Live FOB	14,616	1413.6	195.00-206.00	197.77
Live Del	2,573	1510.6	1983.00-208.00	201.63
Dressed Del	4,057	964.2	312.00-328.00	313.19
Dressed FOB	531	994.0	310.00-315.00	314.03

#### WEEKLY COMMODITY FUTURES TRENDS

Compared to last week, Live Cattle 0.10 to 1.55 lower, Lean Hogs 4.00 to 5.60 lower, Feeder Cattle 4.63 to 7.02 higher.

#### Daily Futures Closes

	Mon.	Tues.	Wed.	Thu.	Fri.
Cattle					
Feb	198.90	199.50	198.82	199.40	197.72
Apr	195.10	195.72	194.62	196.12	192.65
Jun	191.40	192.25	191.27	192.32	188.77
Aug	190.22	191.07	190.27	191.07	187.92
Oct	192.17	193.12	192.35	193.02	190.15
Lean Hogs					
Apr	87.40	86.57	88.30	84.37	83.67
May	91.50	90.60	92.45	88.75	87.42
Jun	99.92	99.10	100.87	97.60	95.02
Jul	101.40	100.55	102.37	99.47	96.75
Aug	100.72	99.90	101.40	98.67	95.90
Fdr Cattle					
Mar	272.30	274.22	274.37	276.45	274.97
Apr	272.02	273.80	273.52	275.55	273.00
May	270.35	272.32	271.82	273.97	271.12
Aug	273.30	275.37	274.77	276.92	274.05
Sep	272.62	274.65	273.97	276.02	273.35
Milk					
Feb	20.22	20.20	20.20	20.21	20.23
Mar	19.01	18.70	18.82	19.00	18.69
Apr	18.64	18.40	18.45	18.60	18.27



## WEEKLY COMMODITY GRAIN FUTURES TRENDS

Compared to last week, Soybeans 0.28 to 0.33 lower, Wheat 0.45 to 0.53 lower, Corn 0.20 to 0.38 lower, KC Wheat 0.45 to 0.51 lower, Soybean Meal 3.10 to 3.70 lower.

### Daily Grain Futures Closes

	Mon.	Tues.	Wed.	Thu.	Fri.
<b>Soybeans</b>					
Mar	1029	1031 1/4	1024 1/2	1022 3/4	1011 1/2
May	1047 1/2	1048 3/4	1041 1/4	1037 1/4	1025 3/4
Jul	1063 1/4	1063 1/2	1056 1/4	1052	1040
Aug	1062 1/4	1061 3/4	1055	1050 1/2	1038 1/4
Sep	1049	1048	1042 1/4	1037 1/2	1025 1/2
<b>Wheat</b>					
Mar	579	572 3/4	566	546 3/4	537
May	593 1/2	587 3/4	579 3/4	562 1/4	555 3/4
Jul	608	602 1/4	593 3/4	576 3/4	569 1/4
Sep	623 1/4	617 1/2	608 1/2	592	584 1/2
Dec	642	636 3/4	627 3/4	611 1/2	604 1/2
<b>Corn</b>					
Mar	482 1/2	479 3/4	478 1/4	464 3/4	453 1/2
May	497	494 1/4	493 1/2	481	469 1/2
Jul	502	499 1/4	498 1/2	486 3/4	475 3/4
Sep	472 1/2	471	467 1/4	459 3/4	450 1/4
Dec	470 3/4	470	467	461 3/4	455
<b>KC Wheat</b>					
Mar	596 1/2	591 3/4	585	571 1/4	558 1/4
May	609 1/2	605 1/2	598 1/2	585 1/4	573
Jul	622	618 1/2	611 1/4	597 1/2	586
Sep	636 1/4	632 1/4	625	611 1/2	600 1/2
Dec	655	650 3/4	643 3/4	630 1/2	620 1/4
<b>SB Meal</b>					
Mar	291.80	293.80	293.40	290.90	291.70
May	300.90	303.00	302.50	300.20	300.20
Jul	308.60	310.40	310.00	307.50	307.50
Aug	311.00	312.80	312.30	309.80	309.60
Sep	312.40	314.10	313.70	311.10	310.90

## MISSOURI GRAIN WEEKLY TRENDS

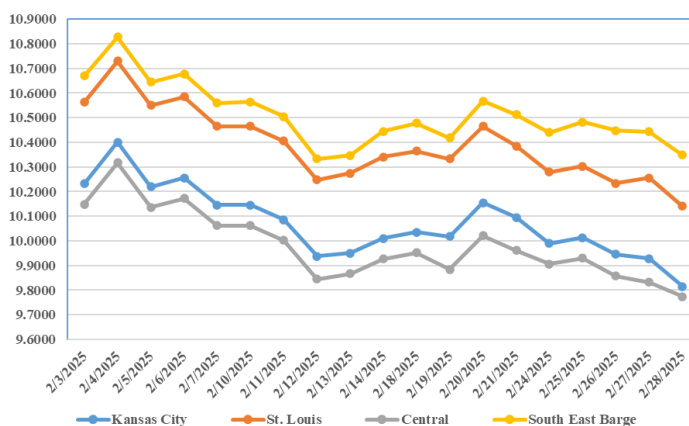
Compared to last week, Soybeans 0.23 to 0.28 lower, Wheat 0.44 to 0.54 lower, Corn 0.37 to 0.39 lower, Sorghum no trend due to lack of bids.

Area	#1 Soybeans	#2 Soft Wheat	#2 Corn	#2 Grain Sorghum
<b>Kansas City</b>				
Friday**	9.90-10.20	5.70	4.51-4.81	4.56
Monday	9.79-10.09	5.59	4.43-4.73	4.48
Tuesday	9.81-10.11	5.53	4.40-4.70	4.45
Wednesday	9.75-10.05	5.46	4.38-4.68	4.43
Thursday	9.73-10.03	5.27	4.25-4.55	4.30
Friday	9.62-9.92	5.26	4.14-4.44	4.19
<b>St. Louis</b>				
Friday**	10.37-10.41	5.85-6.10	4.94-4.99	—
Monday	10.26-10.30	5.74-5.99	4.85-4.91	—
Tuesday	10.28-10.32	5.68-5.90	4.82-4.86	—
Wednesday	10.21-10.26	5.60-5.82	4.81-4.83	—
Thursday	10.22-10.29	5.43-5.63	4.68-4.71	—
Friday	10.11-10.18	5.36-5.56	4.57-4.60	—
<b>Central</b>				
Friday**	9.90-10.00	5.60	4.56-4.61	—
Monday	9.84-9.94	5.49	4.48-4.53	—
Tuesday	9.86-9.96	5.43	4.45-4.50	—
Wednesday	9.78-9.90	5.36	4.44-4.48	—
Thursday	9.74-9.88	5.17	4.31-4.35	—
Friday	9.71-8.81	5.16	4.20-4.30	—
<b>S.E. MO</b>				
Friday**	10.50-10.55	—	5.07-5.14	—
Monday	10.41-10.47	—	5.02-5.06	—
Tuesday	10.43-10.54	—	4.99-5.03	—
Wednesday	10.37-10.50	—	4.93-5.03	—
Thursday	10.41-10.48	—	4.80-4.90	—
Friday	10.32-10.37	—	4.69-4.79	—

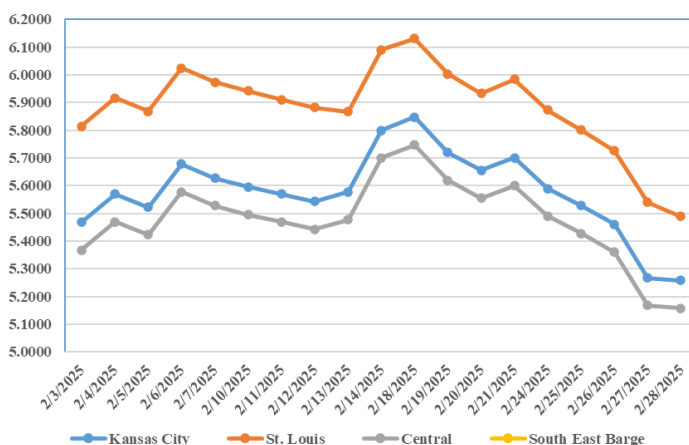
(PRICES PER BUSHEL) \*NEW CROP \*\*PREVIOUS WEEK'S PRICES  
\*Bids calculated using Kansas City, St. Louis, and St. Joseph bids

## MONTHLY GRAIN CROP

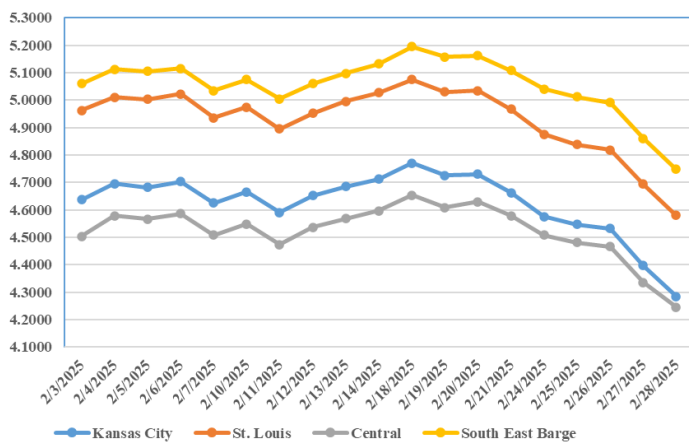
### February 2025 Soybean Bids



### February 2025 Wheat Bids



### February 2025 Corn Bids



\*Axis value ranges may be updated to reflect data points.  
Only dates in which markets are trading and only current cash bids are represented.

## WHOLESALE FEEDSTUFFS PRICES (DOLLARS PER TON-BULK BASIS)

Area	Cottonseed Meal 41%	Soybean Meal 46.5-48%	Corn Gluten Pellets 21%	Wheat Middlings
Kansas City	295.00	263.45	206.00	122.50
St. Louis	290.00	n/a	194.50	102.50

### Cold Storage

Total natural cheese stocks in refrigerated warehouses on January 31, 2025 were up 1 percent from the previous month but down 6 percent from January 31, 2024.

Butter stocks were up 26 percent from last month and up 9 percent from a year ago.

Total frozen poultry supplies on January 31, 2025 were up 5 percent from the previous month but down 6 percent from a year ago. Total stocks of chicken were up slightly from the previous month but down 3 percent from last year. Total pounds of turkey in freezers were up 21 percent from last month but down 13 percent from January 31, 2024.

Total frozen fruit stocks were down 5 percent from last month but up 6 percent from a year ago.

Total frozen vegetable stocks were down 6 percent from last month and down 3 percent from a year ago.

Total red meat supplies in freezers were up 3 percent from the previous month but down 6 percent from last year.

Total pounds of beef in freezers were up 2 percent from the previous month but down slightly from last year. Frozen pork supplies were up 3 percent from the previous month but down 11 percent from last year. Stocks of pork bellies were up 24 percent from last month but down 32 percent from last year.

### MISSOURI WEEKLY HAY SUMMARY 2/27/2025

Springlike weather made its way to the state this week. The amount of mud in some areas has been a hindrance when feeding and working with cattle but is much better to work in rather than the sub-zero temperatures from a couple of weeks ago. The latest drought monitor showed just over half the state impacted by some level of dryness with 32.82 percent classified abnormally dry and 15.78 percent moderate drought. In the dryer areas, farmers are thinking about spring preparations. A couple fertilizer buggies have been moving around where ruts aren't going to be an issue. Hay prices are unevenly steady. The supply of hay continues to be moderate to heavy. There is plenty for sale if anyone is finding themselves short at this point. Demand is light to moderate. The Missouri Department of Agriculture has a hay directory at <https://apps.mda.mo.gov/haydirectory> or visit the University of Missouri Extension feed stuff finder at <https://feedstufffinder.org>  
Alfalfa - Supreme 250.00-300.00, small square 8.00-12.00 per bale  
Alfalfa - Premium 200.00-250.00  
Alfalfa - Good 150.00-200.00, small square 6.00-10.00 per bale  
Alfalfa - Fair 125.00-150.00  
Mixed grass - Good/Premium 125.00-200.00  
Mixed grass-Fair/Good 80.00-125.00, small square 3.50-8.00 per bale  
Mixed grass - Fair 25.00-50.00 per large round bale  
Wheat straw - 4.00-7.00 per small square bale  
Corn Stalks - 10.00-25.00 per large round bale

Please Note: The above volumes (tonnage, acres, and bales) listed are for confirmed trades only, it does not include estimated volume (tonnage) for bids or offers to the trade. List your hay for sale at: [Hay Listing Online Form](#). Explanation of Hay Quality Guidelines: [Hay Quality Designation Guidelines](#). Glossary of Terms: [Livestock, Poultry, & Grain Hay Terms](#)

### MISSOURI WEEKLY SHEEP/GOAT AUCTION SUMMARY

Receipts: 1,072 2 Weeks Ago: 568 Last Year: 983

SHEEP: Feeder sheep Medium and Large 1-2 25-35 lbs 300.00-315.00. Small and Medium 1-2 hair 20-30 lbs 342.00-362.50; 35-50 lbs 305.00-359.00.

Slaughter lambs Choice and Prime 1-3 w/s pkg 108 lbs 200.00. Choice and Prime 1 hair 45-70 lbs 350.00-365.00. Choice and Prime 1-2 hair 40-55 lbs 300.00-325.00; 23 hd 68 lbs 340.00; 72 lbs 240.00-315.00. Choice and Prime 1-3 hair 50-70 lbs 350.00-372.00; 70-80 lbs 325.00-330.00; 80-90 lbs 277.00-300.00. Choice 1-3 hair 60-70 lbs 304.00-343.00; 80-90 lbs 242.00-265.00. Good 1-2 hair pkg 64 lbs 205.00; pkg 73 lbs 257.50.

Slaughter ewes Utility and Good 2 85-135 lbs 100.00-135.00. Good 2-3 hair 80-155 lbs 130.00-140.00. Utility and Good 1-3 hair 85-105 lbs 102.50-122.00. Cull and Utility 1-2 hair 85-160 lbs 80.00-105.00.

Slaughter bucks 1-2 125-180 lbs 115.00-150.00. Hair bucks 1-2 100-190 lbs 95.00-127.00.

Replacement ewes Medium and Large 1-2 2-4 yrs 125 lbs exp 165.00-210.00. Small and Medium 1-2 hair 2-4 yrs 118 lbs exp 165.00.

Families Medium and Large 1-2 2-4 yrs 100-125 lbs with 20-40 lb lambs 200.00-270.00 per family.

GOATS: Feeder kids Selection 1 40-50 lbs 370.00-445.00. Selection 1-2 20-40 lbs 200.00-275.00, pygmies 200.00. Selection 2 20-45 lbs 250.00-322.00. Selection 3 pkg 37 lbs 265.00.

Slaughter kids Selection 1 50-60 lbs 380.00-425.00. Selection 1-2 40-55 lbs 250.00-342.00; 60-70 lbs 255.00-362.00; 70 lbs 315.00-320.00. Selection 2 50-60 lbs 240.00-275.00; 60-70 lbs 280.00-341.00; pkg 74 lbs 250.00.

Slaughter nannies does Selection 1-2 50-60 lbs 110.00-120.00; 65-75 lbs 125.00-190.00; 80-145 lbs 117.50-172.00.

Wethers Selection 1-2 90-100 lbs 185.00-260.00; 100-105 lbs 265.00-272.00.

Wether kids Selection 1 50-60 lbs 412.00-415.00; 60-70 lbs 385.00-390.00.

Replacement nannies/does Selection 1-2 1-2 yrs 52 lbs exp 290.00; 2-4 yrs 100-125 lbs exp 150.00-165.00. Selection 1-2 2-4 yrs 100-125 lbs exp 235.00-260.00/hd.

Families Selection 1-2 2-4 yrs 79 lbs with <20 lb kids 200.00/fam; 80-90 lbs exp with <20 lb kid 250.00-260.00/fam

Explanatory Notes: Stage - Represents estimated lambing/kidding period (Open, Exp=exposed, Bred, Fall = Sep-Nov, Win = Dec-Feb, Spr = Mar-May, Sum=Jun-Aug; w/s = woolled and shorn; /hd= per head; /fam=per family  
All price CWT unless otherwise noted.

### MISSOURI DROUGHT MONITOR

Date	None	D0	D1	D2	D3	D4
02/25/25	51.40	32.82	15.78	0	0	0
02/18/25	60.54	29.79	9.67	0	0	0
02/27/24	14.44	51.80	33.76	0	0	0

Reflects percentage of Missouri impacted by drought. D0 Abnormally Dry; D1 Moderate Drought; D2 Severe Drought; D3 Extreme Drought; D4 Exceptional Drought

### NATIONAL DIRECT DELIVERED FEEDER PIG REPORT

2/28/25 Receipts: 116,793 Week ago: 105,608 Year Ago: 133,464

Early weaned pigs 8.00 lower and feeder pigs 6.00 lower.

Cash 73,235 head 50.00-85.00, weighted average 70.16

Formula 31,728 head 50.10-86.32, weighted average 70.28

Feeder pigs 40 pounds basis:

Cash 11,830 head 100.00-115.00, weighted average 109.15

### NATIONAL DAILY DIRECT PRIOR DAY HOG REPORTS

BARROWS AND GILTS (Carcass Basis): 2,276 head  
Base Carcass Price 86.00-92.00, weighted average 88.49

SOWS (Live Basis): 7,031 head  
300-500 lbs. 30.00-82.81  
Over 500 lbs. 73.50-91.50

### MISSOURI WEEKLY DIRECT SLAUGHTER CATTLE REPORT 2/28/25

Weekly Receipts: 120 Week ago: 160 Year ago: 280

Trading as of Friday morning, trade mostly inactive as lower bids are being passed, couple of loads of grid dressed sales 1.00 lower than last week's bid.

LIVE STEERS & HEIFERS:  
No sales reported

DRESSED STEERS & HEIFERS:  
No sales reported

GRADE AND EIGHT (Grid): 3 loads Fri 317.00.

Click here for the current [National Crop Progress](#)

Click here for the current [Missouri Crop Progress](#)

The current hay directory can be found at: [Hay Directory](#).