

Weekly Market Summary

Published by:
Missouri Department of Agriculture
Ag Business Development Division
Market News Program



Chris Chinn, Director
Jill Wood, Division Director
Tony Hancock, Editor
[agmarketnews.mo.gov](http://www.ams.usda.gov/marketnews.htm)
<http://www.ams.usda.gov/marketnews.htm>

Michael Kehoe, Governor

Volume XLV, Number 10 ♦ P.O. Box 630, Jefferson City, MO 65102 ♦ (573) 751-4211 ♦ Mon, Mar 10, 2025

MISSOURI WEEKLY FEEDER CATTLE WEIGHTED AVERAGE REPORT

Feeder Cattle Receipts: 32,420 Week ago: 32,435 Year ago: 37,605
Steers and Heifers Medium and Large 1—Weighted average weights and prices

STEERS: Medium and Large 1

317 lbs. 434.97	522 lbs. 369.83	727 lbs. 290.78	919 lbs. 260.83
382 lbs. 424.08	575 lbs. 347.63	775 lbs. 277.64	970 lbs. 240.52
422 lbs. 405.87	626 lbs. 329.44	820 lbs. 271.37	1043 lbs. 234.00
475 lbs. 390.07	670 lbs. 311.72	865 lbs. 262.63	

HEIFERS: Medium and Large 1

279 lbs. 383.16	476 lbs. 339.10	673 lbs. 273.26	883 lbs. 233.07
325 lbs. 397.76	522 lbs. 318.37	721 lbs. 261.81	905 lbs. 223.69
376 lbs. 373.28	570 lbs. 308.20	772 lbs. 251.73	979 lbs. 233.50
424 lbs. 354.25	621 lbs. 288.29	827 lbs. 241.63	1036 lbs. 206.12

MISSOURI STEER (HEIFER) STOCKER FORMULA 3/10/2025

Monday's Missouri Stocker formula consists of **5876 (5876)** head with a weighted average weight of **552.76 (535.67)** lbs. and a price value of **344.94 (306.16)**, 3.71 lower (0.90 lower) than a week ago.

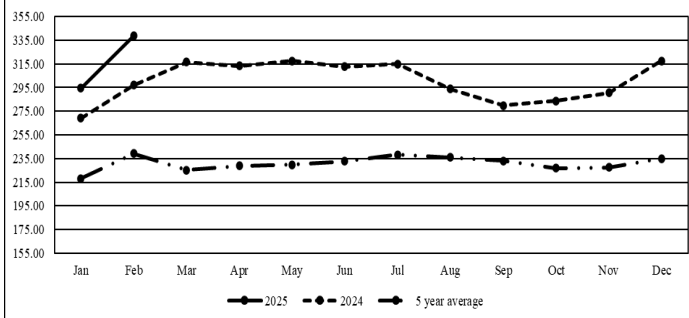
This is a rolling seven day calculated weighted value which combines all Feeder Steers reported by MDA/USDA Market News Service weighing from 400-649 lbs. in the Medium and Large 1 and Medium and Large 1-2 frame and muscle classifications, including all comment cattle except Brahman X. Heifer values are in parentheses.

MISSOURI WEEKLY CATTLE AUCTION SUMMARY

Total Receipts: 36,788 Week Ago: 37,523 Year Ago: 43,047

Compared to last week, feeders sold unevenly steady to 5.00 lower although there were some instances of steady to 2.00 higher mostly on midweight steers if condition was favorable for grazing and all the work was done. Markets did show signs of strength later in the week, however late week receipts were limited. The supply of feeders was light to moderate and demand was moderate with flesh conditions playing a big part on how willing buyers were to show any aggressive bidding to try and own them. A winter cold snap passed over the state mid-week providing a little snow along with extreme winds which made some areas mostly in the north a little difficult to travel for a few hours. A big warm up came by the weekend and projected for the entire coming week quickly had thoughts shifted back to doing spring task and eager for grass. Some stick out feeder sales around the state included 24 head of 538 lb. steers at Joplin Regional Stockyards for 410.50, 34 head of 716 lb. steers for 306.00 and 160 head of 973 lbs. steers for 240.00. New Cambria Livestock Auction sold 25 head of 625 lb. steers for 344.00. Windsor Livestock Auction sold 80 head of 678 lb. steers for 330.50 along with 35 head of 752 lb. steers for 296.50. Tina Livestock Market sold 62 head of 860 lb. steers for 272.75. Callaway Livestock Center sold 28 head of 510 lb. fancy heifers for 353.00. Kingsville Livestock Auction sold 20 head of 741 lb. heifers for 279.50. Boxed beef cutouts were higher for the week. Choice closed on Friday at 314.90, up 3.07 and Select closed at 305.80, up 3.30 compared to last Friday. Negotiated feedlot sales as of the Friday afternoon report totaled near 55K head as of the 2:00 report cutoff time. Live and dressed sales in the south took place earlier in the week mostly steady to weak. Sales in the north didn't occur till Friday afternoon mostly 2.00 to 4.00 higher. Live sales were reported mostly 197.00-202.50 and dressed sales 315.00-320.00. The Missouri Stocker formula consists of 5876 head with a weighted average weight of 552.76 lbs. and a price value of 344.94, 3.71 lower than last week. The steer/heifer spread is 38.78 per cwt.

Missouri Stocker Formula - Steers

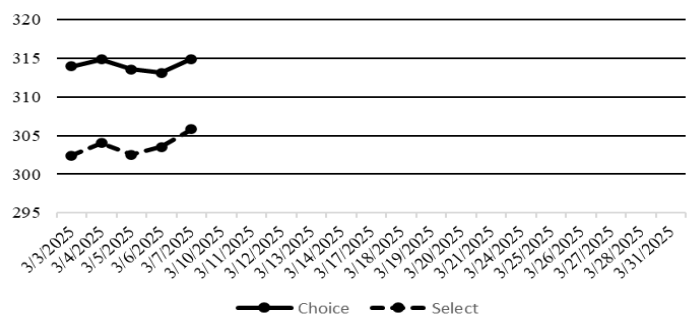


*Graph is updated the first Monday of each month. Axis value ranges may be updated to reflect data points.

NATIONAL BOXED BEEF CUTOUT VALUES

DATE	CHOICE	SELECT	TOTAL LOADS
3/3	313.93	302.41	100
3/4	314.87	304.02	120
3/5	313.54	302.53	173
3/6	313.12	303.51	122
3/7	314.90	305.80	101
5 Day Simple Average	314.07	303.65	

Boxed Beef Cuts March 2025



*Axis value ranges may be updated to reflect data points.

WEEKLY LIVESTOCK SLAUGHTER 3/7/25

	CATTLE	HOGS	SHEEP
Week to Date:	578,000	2,418,000	39,000
Last Week:	566,000	2,538,000	39,000
Last Year:	583,995	2,440,332	43,626

SOUTHWEST MISSOURI WEEKLY SUMMARY

(Joplin and Springfield)

Receipts: 14,709 Week ago: 9,062 Year Ago: 12,082
Compared to last week, steer and heifer calves steady to 15.00 lower, and yearlings steady to 12.00 higher. Slaughter cows steady to 5.00 lower. Slaughter bulls early week steady to 4.00 higher and late week 2.00 to 5.00 lower.

FEEDER STEERS: Medium and Large 1

300-400 lbs.	410.00-460.00
400-500 lbs.	375.00-420.00
500-600 lbs.	302.00-395.00
600-700 lbs.	295.00-338.00
700-800 lbs.	256.00-306.00
800-900 lbs.	261.50-276.25
900-1000 lbs.	240.00-258.00
56 hd 1043 lbs.	234.00

FEEDER HEIFERS: Medium and Large 1

300-400 lbs.	351.00-460.00
400-500 lbs.	330.00-375.00
500-600 lbs.	286.00-335.00
600-700 lbs.	256.00-309.00
700-800 lbs.	244.00-267.00
800-900 lbs.	230.50-252.00
Pkg 907 lbs.	221.00
1000-1050 lbs.	204.50-209.00

FEEDER HOLSTEIN STEERS Large 3

Pkg 632 lbs. 200.00

SLAUGHTER COWS: Breaking and Boning (70-85% lean) 125.00-144.50; high dressing 137.50-151.00; low dressing 110.00-130.00. Lean (85-90%) 110.00-133.00.

SLAUGHTER BULLS: Yield Grade 1-2 1235-2520 lbs. 160.00-182.00; high dressing 180.00-204.00; low dressing 107.50-165.00

BRED COWS: Medium and Large 1 2-8 yrs 1080-1550 lbs 2nd/3rd stage 2275.00-2700.00, 1st stage 2200.00-2300.00; >8 yrs 1255-1555 lbs 2nd/3rd stage 2200.00-2450.00. Medium and Large 1-2 2-8 yrs 900-1560 lbs 1st to 3rd stage 1650.00-2350.00 per head

BRED HEIFERS: Medium and Large 1 2-4 yrs 1020-1185 lbs 2nd/3rd stage 2325.00-3000.00 per head

COW & CALF PAIRS: Medium and Large 1 2-8 yrs 1085-1409 lbs some rebred 1st stage with 150 - >300 lb calves 2950.00-3600.00. Medium and Large 1-2 2-8 yrs 1040-1705 lbs some rebred 1st stage with baby to >300 lb calves 2500.00-3100.00; >8 yrs 1115-1280 lbs some rebred 1st stage with 150 to >300 lb calves 2950.00-3050.00 per pair

SOUTH CENTRAL MISSOURI WEEKLY SUMMARY

(West Plains, Phillipsburg)

Receipts: 4,098 Week ago: 5,096 Year Ago: 4,942
Compared to last week, steers and heifers uneven from 4.00 lower to 4.00 higher. Slaughter cows steady to 2.00 higher. Slaughter bulls steady to 3.00 higher.

FEEDER STEERS: Medium and Large 1

300-400 lbs.	392.50-450.00
400-500 lbs.	370.00-420.00
500-600 lbs.	324.00-369.00
600-700 lbs.	292.50-335.00
700-800 lbs.	275.00-301.00
800-900 lbs.	254.00-266.00

FEEDER HEIFERS: Medium and Large 1

300-400 lbs.	365.00-390.00
400-500 lbs.	323.00-365.00
500-600 lbs.	285.00-330.00
600-700 lbs.	257.50-290.00
700-800 lbs.	245.00-259.00
10 hd 800 lbs.	243.00

FEEDER HOLSTEIN STEERS: Large 3

Scarce Scarce

SLAUGHTER COWS: Breaking and Boning (70-85% lean) 129.50-142.00, high dressing 139.50-150.00; low dressing 114.00-129.50. Lean (85-90%) 106.50-129.00

SLAUGHTER BULLS: Yield Grade 1-2 1230-2255 lbs. 149.00-176.00; high dressing 171.00-201.00; low dressing 132.00-160.00.

BRED COWS: Medium and Large 1-2 2-8 yrs 1085-1670 lbs 2nd/3rd stage 2225.00-3000.00, 1st stage 2050.00-2225.00; >8 yrs 1275 lbs 2nd/3rd stage 2000.00 per head

BRED HEIFERS: Medium and Large 1-2 <2 yrs 875-978 lbs 1st to 3rd stage 1700.00-2100.00 per head

COW & CALF PAIRS: Medium and Large 1-2 2-8 yrs 1100-1320 lbs with 150-300 lb calves 2400.00-3150.00; 2-8 yrs 1250-1600 lbs some rebred 1st to 2nd stage with >300 lb calves 3350.00-3900.00 per pair

WEST CENTRAL MISSOURI WEEKLY SUMMARY

(Kingsville, Windsor, Butler)

Receipts: 7,019 Week ago: 6,754 Year ago: 5,356
Compared to last week, steers and heifers steady to 8.00 lower. Slaughter cows steady.

FEEDER STEERS: Medium and Large 1

400-500 lbs.	367.00-425.00
500-600 lbs.	340.00-405.00
600-700 lbs.	290.00-348.00
700-800 lbs.	268.50-305.00
800-900 lbs.	257.00-280.00
900-1000 lbs.	241.75-264.75

FEEDER HEIFERS: Medium and Large 1

400-500 lbs.	340.00-377.50
500-600 lbs.	281.00-337.50
600-700 lbs.	259.50-316.00
700-800 lbs.	254.00-280.00
800-900 lbs.	215.00-254.50
30 hd 979 lbs.	233.50

SLAUGHTER BULLS: Yield Grade 1-2 1505-2155 lbs. 161.00-180.00

SLAUGHTER COWS: Breaking and Boning (70-85% lean) 128.00-149.00, high dressing 141.50-152.00. Lean (85-90%) 112.00-128.00.

BRED COWS: Scarce

COW & CALF PAIRS: Scarce

NORTHEAST MISSOURI WEEKLY SUMMARY

(Bowling Green, Kingdom City, Palmyra)

Receipts: 4,720 Week ago: 4,658 Year ago: 6,214
Compared to last week, feeders firm to higher undertone on a much larger offering this week of comparable sales. Slaughter cows mostly 3.00 to 10.00 lower, compared to last week's very active market.

FEEDER STEERS: Medium and Large 1

400-500 lbs.	395.00-420.00
500-600 lbs.	335.00-387.25
600-700 lbs.	297.00-345.00
700-800 lbs.	270.50-295.50
800-850 lbs.	271.75-277.50
900-950 lbs.	256.75-268.75

FEEDER HEIFERS: Medium and Large 1

300-400 lbs.	362.00-447.50
400-500 lbs.	330.00-361.00
500-600 lbs.	301.00-334.00
600-700 lbs.	267.00-300.00
700-800 lbs.	250.00-271.75
800-900 lbs.	232.00-252.50

SLAUGHTER BULLS: Yield Grade 1-2 1380-2465 lbs. 162.00-189.00; high dressing 179.00-196.00; low dressing 143.00-168.00.

SLAUGHTER COWS: Breaking and Boning, (70-85% lean) 126.00-146.00; high dressing 137.50-159.00; low dressing 111.00-137.00. Lean (85-90%) 116.00-130.00.

SLAUGHTER STEERS: Choice 2-3 200.00-207.00. Select and Choice 1-3 196.50. Select and Choice 2-3 196.00-198.00.

SLAUGHTER HEIFERS: Choice and Prime 2-4 209.50. Choice 2-3 203.50-206.00. Select and Choice 1-2 196.00.

BRED COWS: Medium and Large 1 2-8 yrs 1196-1490 lbs 2nd/3rd stage 2975.00-3750.00. Medium and Large 1-2 2-8 yrs 1103-1470 lbs 2nd/3rd stage 2500.00-3600.00, 1st stage 2400.00 per head

COW CALF PAIRS: Medium and Large 1 >5 yrs 110-1400 lbs rebred 1st stage with >300 lb calves 3050.00-3475.00 per pair

NORTH CENTRAL MISSOURI WEEKLY SUMMARY

(Macon, Unionville, Green City, New Cambria)

Receipts: 1,144 Week ago: 5,455 Year ago: 6,673
Compared to last week, steers and heifers traded unevenly steady to weak. Slaughter cows 2.00 to 6.00 lower.

*Some sale barns on a bi-weekly schedule and may not have a sale each week.

FEEDER STEERS: Medium and Large 1

450-500 lbs.	388.00-400.00
500-600 lbs.	355.50-369.50
600-700 lbs.	320.00-344.00
700-800 lbs.	281.50-303.00
66 hd 800 lbs.	284.00
15 hd 941 lbs.	251.00

FEEDER HEIFERS: Medium and Large 1

Pkg 483 lbs.	339.00
500-600 lbs.	304.50-314.00
600-700 lbs.	275.00-320.50
700-800 lbs.	264.00-275.00

SLAUGHTER BULLS: Yield Grade 1-2 1420-2340 lbs. 164.00-186.00; couple low dressing 138.00-145.50

SLAUGHTER COWS: Breaking and Boning (70-85% lean) 120.00-145.00, high dressing 140.00-148.00. Lean (85-90%) 111.00-125.00

BRED COWS: Scarce

BRED HEIFERS: Scarce

SOUTHEAST MISSOURI WEEKLY SUMMARY

(Jackson and Farmington)

Receipts: 1,481 Week ago: 2,344 Year ago: 2,276
Compared to last week, steers and heifers uneven form 4.00 lower to 9.00 higher. Slaughter cows steady. Slaughter bulls steady to 2.00 higher.

FEEDER STEERS: Medium and Large 1

300-400 lbs. 375.00-437.00
400-500 lbs. 350.00-410.00
500-600 lbs. 295.00-337.00
600-700 lbs. 270.00-320.00
700-800 lbs. 249.00-288.00
850-900 lbs. 248.00-253.00

FEEDER HEIFERS: Medium and Large 1

300-400 lbs. 322.00-367.00
400-500 lbs. 317.00-362.00
500-600 lbs. 275.00-340.00
600-700 lbs. 250.00-280.00
700-800 lbs. 235.00-243.00
800-900 lbs. 225.00-237.00

SLAUGHTER BULLS: Yield
Grade 1-2 1005-2535 lbs 122.00-
160.00, high dressing 151.00-
190.00.

SLAUGHTER COWS: Breaking
and Boning (75-85% lean) 110.00-
126.00; high dressing 125.00-
152.00. Lean (85-90% lean) 81.00-
115.00

BRED COWS: Medium and Large
2 2-8 yrs 1005-1310 lbs 2nd/3rd
stage 1825.00-2300.00, 1st stage
1250.00-1350.00 per head

COW & CALF PAIRS: Medium
and Large 2 2-8 yrs 1125-1225 lb
with 150-300 lb calves 2000.00-
3400.00 per pair

EAST CENTRAL MISSOURI WEEKLY SUMMARY

(Cuba, Vienna)

Receipts: 1,613 Week Ago: 2,231 Year ago: 3,250
Compared to last week, steers under 600 lbs steady to 8.00 higher,
over 600 lbs steady to 3.00 lower. Heifers steady to 6.00 lower.
Slaughter cows steady to 2.00 higher.

FEEDER STEERS: Medium and Large 1

400-500 lbs. 367.00-426.00
500-600 lbs. 326.00-393.00
600-700 lbs. 288.00-323.00
700-800 lbs. 276.10-293.00
800-850 lbs. 265.00-275.50

FEEDER HEIFERS: Medium and Large 1

300-400 lbs. 340.00-385.00
400-500 lbs. 317.00-356.00
500-600 lbs. 276.00-320.50
600-700 lbs. 267.75-280.00
Pkg 888 lbs. 225.00

SLAUGHTER BULLS: Yield
Grade 1-2 1360-2380 lbs 152.00
-176.00; high dressing 165.00-
174.00; low dressing 120.00-
157.00.

SLAUGHTER COWS: Breaking
and Boning, (70-85% lean) 130.00-
144.50; high dressing 142.50-
150.50. Lean (85-90%) 118.00-
133.00.

BRED COWS: Medium and
Large 1 2-4 yrs 1192 lbs
2900.00; >8 yrs 1298 lbs 2nd
stage 2400.00. Medium and
Large 1-2 2-8 yrs 1050-1505 lbs
1st to 3rd stage 2050.00-2810.00
per head

COW & CALF PAIRS: Scarce

NORTHWEST MISSOURI WEEKLY SUMMARY

(Tina)

Receipts: 2,004 Week Ago: 1,371 Year Ago: 2,254
Compared to last week, steers and heifers mostly 5.00 to 15.00 higher.
Slaughter cows and bulls steady to 3.00 higher, some high yielding
bulls 3.00 to 7.00 higher.

FEEDER STEERS: Medium and Large 1

400-500 lbs. 377.50-425.00
500-600 lbs. 334.00-387.00
600-700 lbs. 293.00-341.75
700-800 lbs. 276.25-295.00
800-900 lbs. 270.00-275.10

FEEDER HEIFERS: Medium and Large 1

350-400 lbs. 365.00-367.50
400-500 lbs. 330.00-362.50
500-600 lbs. 305.00-337.50
600-650 lbs. 284.00-299.50
700-800 lbs. 262.00-279.00

SLAUGHTER BULLS:
Yield Grade 1-2 1090-2135 lbs
171.50-178.50; high dressing
185.50-187.50; couple low dress-
ing 133.00-157.00

SLAUGHTER COWS: Breaking
and Boning, (70-85% lean) 130.00-
145.50; high dressing 143.00-
156.00. Lean (85-90%) 118.00-
136.00

BRED COWS: Scarce

COW/CALF PAIRS: Scarce

AFTERNOON NATIONAL SLAUGHTER CATTLE REVIEW

Thus far for Friday in the Southern Plains, negotiated cash trading has been mostly inactive on very light demand. The last reported market was on Thursday with live FOB purchases at 197.00. In Nebraska, negotiated cash trading has been active on good demand. Compared to last week, live FOB and dressed delivered purchases traded 2.00-4.00 higher from 200.00-202.00 and 315.00- 317.00, respectively. In the Western Cornbelt, negotiated cash trading has been light with moderate demand. Compared to last week, on a light test, live FOB purchases traded 2.00-4.00 higher from 200.00-202.00. Not enough dressed delivered purchases for a market trend, last week dressed delivered purchases traded at 313.00.

Negotiated Cash Sales:

Confirmed:	39,867	Week Ago:	21,911	Year Ago:	39,842
Week to date:	54,572	Week Ago:	32,965	Year Ago:	61,812

<u>Live Basis</u>	<u>Steers</u>	<u>Heifers</u>
Over 80% Choice	198.00-202.50, avg 201.14	200.00-202.00, avg 201.00
65-80% Choice	200.00	200.00
35-65% Choice	198.00	-
0-35% Choice	-	-
Total All Grades	198.00-202.50, avg 201.04	200.00-202.00, avg 200.90
<u>Dressed Basis</u>		
Over 80% Choice	315.00-320.00, avg 316.48	315.00-320.00, avg 316.32
65-80% Choice	315.00-318.00, avg 315.61	315.00
35-65% Choice	-	-
0-35% Choice	-	-
Total All Grades	315.00-320.00, avg 316.41	315.00-320.00, avg 316.14

<u>All Beef Type</u> <u>Steers/Heifers</u>	<u>Head</u>	<u>Avg Wt</u>	<u>Price Range</u>	<u>Wtd Avg</u>
Live FOB	28,159	1477.7	197.00-206.00	317.00
Live Del	457	1398.7	198.00-205.00	201.76
Dressed Del	10,044	961.4	313.00-320.00	316.24
Dressed FOB	979	970.9	316.00-318.00	317.64

WEEKLY COMMODITY FUTURES TRENDS

Compared to last week, Live Cattle 4.68 to 7.70 higher, Lean Hogs 2.15 to 3.68 higher, Feeder Cattle 2.00 to 7.08 higher.

Daily Futures Closes

	Mon.	Tues.	Wed.	Thu.	Fri.
Cattle					
Apr	192.25	194.65	196.55	196.27	200.27
Jun	188.10	190.07	192.70	192.62	196.47
Aug	187.17	188.47	191.27	190.97	194.35
Oct	189.47	190.20	192.92	194.40	195.35
Dec	191.70	192.40	194.77	194.47	197.05
Lean Hogs					
Apr	83.70	82.35	84.70	86.65	87.35
May	87.67	85.47	87.47	89.67	90.60
Jun	95.35	93.15	94.57	97.02	98.10
Jul	97.30	95.52	96.32	98.35	99.32
Aug	96.57	94.85	95.42	96.90	98.05
Fdr Cattle					
Mar	274.02	273.85	276.10	274.02	276.97
Apr	272.05	272.50	276.07	274.42	278.15
May	270.20	271.00	275.07	273.85	278.20
Aug	273.35	274.00	277.80	277.20	281.07
Sep	272.65	273.12	276.80	276.27	280.27
Milk					
Mar	18.54	18.12	18.25	18.29	18.36
Apr	18.09	17.59	17.34	17.20	17.20
May	18.16	17.78	17.74	17.55	17.58

WEEKLY COMMODITY GRAIN FUTURES TRENDS

Compared to last week, Soybeans steady to 0.04 lower, Wheat 0.01 to 0.04 lower, Corn 0.01 lower to 0.02 higher, KC Wheat 0.07 to 0.09 lower, Soybean Meal 3.20 to 4.80 higher.

Daily Grain Futures Closes

	Mon.	Tues.	Wed.	Thu.	Fri.
Soybeans					
Mar	998 1/4	984	997 3/4	1014	1010 1/4
May	1011 1/2	999	1011 3/4	1027 1/4	1025
Jul	1025 3/4	1013 3/4	1025	1039 1/2	1038 3/4
Aug	1025	1011 3/4	1021	1034 1/4	1035 3/4
Sep	1014 1/4	999 1/2	1006 3/4	1018 1/4	1021 1/2
Wheat					
Mar	532	518 1/2	530 3/4	537	533 3/4
May	547 3/4	536 3/4	548 1/4	554	551 1/4
Jul	561 1/4	551 1/4	562	568	565 1/2
Sep	577	567 3/4	578	584	581 1/2
Dec	598 1/4	590 3/4	599 1/4	605 1/2	603
Corn					
Mar	440 1/4	436	440 1/4	449 1/2	455 1/4
May	456 1/4	451 1/2	455 3/4	464	469 1/4
Jul	463 3/4	459 1/4	463 1/4	470 3/4	475 3/4
Sep	445	441	441	445 3/4	450 1/4
Dec	451 1/4	446 3/4	446 3/4	451	454 1/4
KC Wheat					
Mar	547 1/2	534	542 1/4	551 1/2	551 1/4
May	562	548 1/2	557	565 3/4	564 3/4
Jul	576	563 1/4	571 1/4	579 1/2	577 1/4
Sep	591 1/4	579	586 1/4	594 1/4	591 1/4
Dec	612 1/4	601	607 3/4	615 1/4	611 1/2
SB Meal					
Mar	290.10	285.90	293.00	297.10	296.50
May	298.00	293.50	299.80	304.90	304.40
Jul	305.30	301.10	306.90	311.40	311.10
Aug	307.50	303.30	308.90	312.90	312.90
Sep	308.90	304.70	310.10	313.70	314.10

MISSOURI GRAIN WEEKLY TRENDS

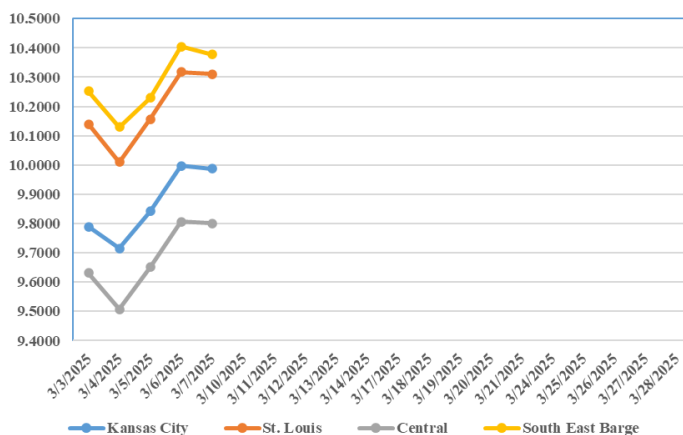
Compared to last week, Soybeans 0.08 to 0.23 higher, Wheat 0.05 lower to 0.01 higher, Corn 0.11 to 0.15 higher, Sorghum no trend due to lack of bids.

Area	#1 Soybeans	#2 Soft Wheat	#2 Corn	#2 Grain Sorghum
Kansas City				
Friday**	9.62-9.92	5.26	4.14-4.44	4.19
Monday	9.57-10.07	5.18	4.16-4.39	3.81
Tuesday	9.44-9.94	5.07	4.12-4.37	3.77
Wednesday	9.57-10.07	5.18	4.16-4.41	3.81
Thursday	9.72-10.22	5.24	4.24-4.49	3.89
Friday	9.70-10.20	5.21	4.29-4.56	3.94
St. Louis				
Friday**	10.11-10.18	5.36-5.56	4.57-4.60	—
Monday	10.14-10.15	5.34-5.50	4.54-4.55	—
Tuesday	10.00-10.02	5.23-5.39	4.50-4.51	—
Wednesday	10.15-10.17	5.34-5.50	4.55-4.58	—
Thursday	10.31-10.32	5.40-5.56	4.64-4.65	—
Friday	10.31	5.37-5.53	4.71	—
Central				
Friday**	9.71-8.81	5.16	4.20-4.30	—
Monday	9.57-9.67	5.08	4.11-4.21	—
Tuesday	9.44-9.54	4.97	4.07-4.17	—
Wednesday	9.62-9.67	5.08-5.18	4.16-4.21	—
Thursday	9.77-9.82	5.14-5.24	4.24-4.29	—
Friday	9.75-9.85	5.21	4.29-4.39	—
S.E. MO				
Friday**	10.32-10.37	—	4.69-4.79	—
Monday	10.18-10.37	—	4.56-4.64	—
Tuesday	10.05-10.24	—	4.52-4.62	—
Wednesday	10.22-10.27	—	4.56-4.66	—
Thursday	10.36-10.42	—	4.66-4.74	—
Friday	10.35-10.40	—	4.71-4.79	—

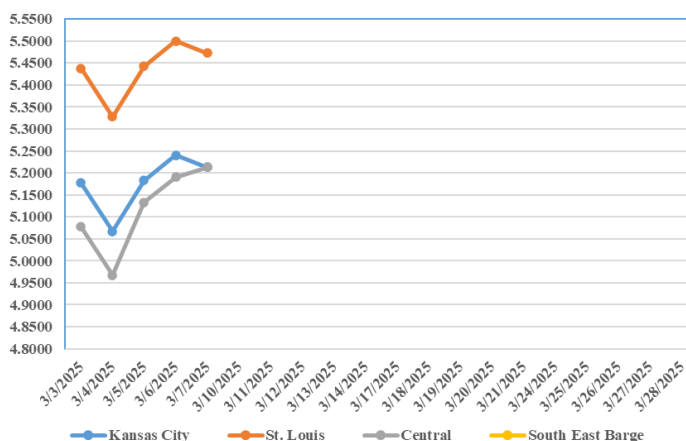
(PRICES PER BUSHEL) *NEW CROP **PREVIOUS WEEK'S PRICES
*Bids calculated using Kansas City, St. Louis, and St. Joseph bids

MONTHLY GRAIN CROP

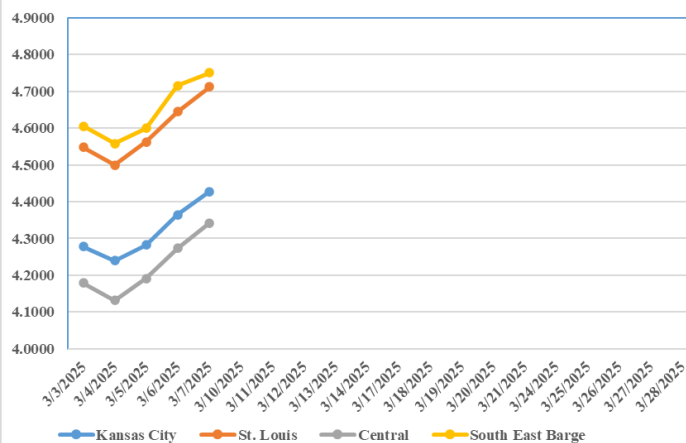
March 2025 Soybean Bids



March 2025 Wheat Bids



March 2025 Corn Bids



*Axis value ranges may be updated to reflect data points.
Only dates in which markets are trading and only current cash bids are represented.

WHOLESALE FEEDSTUFFS PRICES (DOLLARS PER TON-BULK BASIS)

Area	Cottonseed Meal 41%	Soybean Meal 46.5-48%	Corn Gluten Pellets 21%	Wheat Middlings
Kansas City	295.00	283.90	203.00	212.50
St. Louis	290.00	n/a	193.00	95.00

OILSEED CRUSH, PRODUCTION, CONSUMPTION, STOCKS

Soybeans crushed for crude oil was 6.38 million tons (213 million bushels) in January 2025, compared with 6.53 million tons (218 million bushels) in December 2024 and 5.83 million tons (194 million bushels) in January 2024. Crude oil produced was 2.53 billion pounds, down 2 percent from December 2024 but up 11 percent from January 2024. Soybean once refined oil production at 1.72 billion pounds during January 2025 decreased 10 percent from December 2024 but increased 8 percent from January 2024.

Canola seeds crushed for crude oil was 205,923 tons in January 2025, compared with 223,154 tons in December 2024 and 203,989 tons in January 2024. Canola crude oil produced was 160 million pounds, down 8 percent from December 2024 and down 4 percent from January 2024. Canola once refined oil production, at 157 million pounds during January 2025, was down 9 percent from December 2024 but up 1 percent from January 2024.

Cottonseed once refined oil production, at 33.8 million pounds during January 2025, was up 12 percent from December 2024 and up 34 percent from January 2024.

Edible tallow production was 71.3 million pounds during January 2025, down 6 percent from December 2024 and down 2 percent from January 2024. Inedible tallow production was 302 million pounds during January 2025, up less than 1 percent from December 2024 but down 2 percent from January 2024. Technical tallow production was 115 million pounds during January 2025, down less than 1 percent from December 2024 but up 5 percent from January 2024. Choice white grease production, at 102 million pounds during January 2025, increased 1 percent from December 2024 but decreased 13 percent from January 2024.

GRAIN CRUSHINGS AND CO-PRODUCTS PRODUCTION

Total corn consumed for alcohol and other uses was 503 million bushels in January 2025. Total corn consumption was down 5 percent from December 2024 but up 4 percent from January 2024. January 2025 usage included 92.7 percent for alcohol and 7.3 percent for other purposes. Corn consumed for beverage alcohol totaled 2.85 million bushels, down 11 percent from December 2024 and down 29 percent from January 2024. Corn for fuel alcohol, at 457 million bushels, was down 5 percent from December 2024 but up 4 percent from January 2024. Corn consumed in January 2025 for dry milling fuel production and wet milling fuel production was 91.5 percent and 8.5 percent, respectively.

Dry mill co-product production of distillers dried grains with solubles (DDGS) was 1.85 million tons during January 2025, down 1 percent from December 2024 but up 5 percent from January 2024. Distillers wet grains (DWG) 65 percent or more moisture was 1.26 million tons in January 2025, down 2 percent from December 2024 and down 3 percent from January 2024.

Wet mill corn gluten feed production was 253,838 tons during January 2025, down 1 percent from December 2024 but up 12 percent from January 2024. Wet corn gluten feed 40 to 60 percent moisture was 204,250 tons in January 2025, up 1 percent from December 2024 and up 2 percent from January 2024.

MISSOURI WEEKLY HAY SUMMARY 3/6/2025

The roller coaster ride of the changing seasons is well under way in the state. The last few weeks have gone from one extreme to the other as we have a week of cold a week of hot then back to cold. Extreme winds and some snow blew in this week which quickly stopped the few fertilizer buggies that had been out in fields. Despite the fact there hasn't been any extended periods of snow cover this feeding season most farmers have stated it seems they have fed a lot of hay this year. Even with that there remains a lot of hay still setting around in the country. Overall, the hay market has held very well as the amount of feeding days draw shorter. Hay prices are unevenly steady on most types of hay, extremely high-quality equine hay is steady to firm. The supply of hay is moderate to heavy, and demand is light to moderate. The Missouri Department of Agriculture has a hay directory at <https://apps.mda.mo.gov/haydirectory> or visit the University of Missouri Extension feed stuff finder at <https://feedstufffinder.org>

Alfalfa - Supreme 250.00-300.00, small square 8.00-12.00 per bale
Alfalfa - Premium 200.00-250.00
Alfalfa - Good 150.00-200.00, small square 6.00-10.00 per bale
Alfalfa - Fair 125.00-150.00
Mixed grass - Good/Premium 125.00-200.00
Mixed grass-Fair/Good 80.00-125.00, small square 3.50-8.00 per bale
Mixed grass - Fair 25.00-50.00 per large round bale
Wheat straw - 4.00-7.00 per small square bale
Corn Stalks - 10.00-25.00 per large round bale

Please Note: The above volumes (tonnage, acres, and bales) listed are for confirmed trades only, it does not include estimated volume (tonnage) for bids or offers to the trade. List your hay for sale at: [Hay Listing Online Form](#). Explanation of Hay Quality Guidelines: [Hay Quality Designation Guidelines](#). Glossary of Terms: [Livestock, Poultry, & Grain Hay Terms](#)

MISSOURI WEEKLY SHEEP/GOAT AUCTION SUMMARY

Receipts: 1,278 Week Ago: 1,072 Last Year: 993

SHEEP: Feeder lambs Small and Medium 1-2 hair 20-30 lbs 305.00-415.00, thin 250.00-265.00; 30-40 lbs 265.00-307.50, thin 230.00-245.00; 40-50 lbs 285.00-355.00.

Slaughter lambs Choice and Prime 1-3 hair 45-80 lbs 325.00-385.00; 90-100 lbs 240.00-275.00; 110-115 lbs 190.00-210.00. Choice 1-3 hair 50-60 lbs 305.00-337.50; 60-80 lbs=bs 257.50-325.00.

Slaughter ewes Good 2-3 hair 80-135 lbs 140.00-185.00. Utility and Good 1-3 hair 80-155 lbs 102.50-140.00.

Slaughter bucks 1-2 130-140 lbs 135.00-180.00; 210-225 lbs 125.00-130.00.

Replacement ewes Small and Medium 1-2 hair 1-2 yrs 60-90 lbs exp 200.00-245.00; 2-4 yrs 80-120 lbs exp 185.00-255.00; 4-6 yrs 100 lbs exp 200.00.

Families Small and Medium 1-2 2-4 yrs 75-95 lbs exp with <20 lb lambs 267.00-362.50/fam, 108 lbs exp with <20 lb lambs 185.00/fam; 4-6 yrs 60-110 lbs exp with <20 lb lambs 130.00-235.00/fam.

GOATS: Feeder kids Selection 1 30-50 lbs 335.00-425.00. Selection 2 20-45 lbs 227.50-325.00, pygmies 250.00. Selection 3 20-30 lbs pygmies 185.00-198.00; pkg 47 lbs 155.00.

Slaughter kids Selection 1 50-75 lbs 330.00-420.00; 80-90 lbs 300.00-360.00. Selection 2 50-90 lbs 235.00-325.00, pygmies 285.00.

Slaughter nannies/does Selection 1-2 pkg 52 pygmies 215.00; 60-70 lbs pygmies 105.00-245.00; pkg 80 lbs 205.00; 90-130 lbs 132.50-287.50.

Slaughter bucks/billies Selection 1-2 55-60 lbs pygmies 200.00-270.00; 105-145 lbs 225.00-275.00, pygmies 152.50-160.00.

Wethers Selection 1-2 80-95 lbs 300.00-335.00; pkg 137 lbs thin 160.00.

Wether kids Selection 1 50-70 lbs 365.00-400.00.

Replacement nannies/does Selection 1 2-4 yrs 150-185 lbs exp 185.00-265.00. Selection 1-2 1-2 yrs 60-100 lbs exp 225.00; 2-4 yrs 95-150 lbs exp 210.00-245.00.

Families Selection 1-2 1-2 yrs 80-90 lbs exp with <20 lb kids 250.00-345.00/fam.

Explanatory Notes: Stage - Represents estimated lambing/kidding period (Open, Exp=exposed, Bred, Fall = Sep-Nov, Win = Dec-Feb, Spr = Mar-May, Sum=Jun-Aug; w/s = woolled and shorn; /hd= per head; /fam=per family
All price CWT unless otherwise noted.

MISSOURI DROUGHT MONITOR

Date	None	D0	D1	D2	D3	D4
3/4/25	44.12	38.26	15.49	2.13	0	0
2/25/25	51.40	32.82	15.78	0	0	0
3/5/24	0.51	53.86	40.10	5.53	0	0

Reflects percentage of Missouri impacted by drought. D0 Abnormally Dry; D1 Moderate Drought; D2 Severe Drought; D3 Extreme Drought; D4 Exceptional Drought

NATIONAL DIRECT DELIVERED FEEDER PIG REPORT

3/7/25 Receipts: 122,295 Week ago: 116,793 Year Ago: 106,206

Early weaned pigs 8.00 lower and feeder pigs 6.00 lower.

Cash 57,750 head 38.00-83.00, weighted average 62.45

Formula 42,220 head 50.09-87.63, weighted average 63.26

Feeder pigs 40 pounds basis:

Cash 20,325 head 95.00-119.00, weighted average 102.69

NATIONAL DAILY DIRECT PRIOR DAY HOG REPORTS 3/7/25

BARROWS AND GILTS (Carcass Basis): 2,965 head
Base Carcass Price 82.00-93.00, weighted average 88.79

SOWS (Live Basis): 7,828 head
300-500 lbs. 30.00-89.69
Over 500 lbs. 69.31-90.33

MISSOURI WEEKLY DIRECT SLAUGHTER CATTLE REPORT 3/7/25

Weekly Receipts: 240 Week ago: 120 Year ago: 280

Trading as of Friday morning, trade uneven with early week flat dressed sales 3.00 lower, flat dressed sales Fri 4.00 higher. Trade slow to develop.

LIVE STEERS & HEIFERS: No sales reported
DRESSED STEERS & HEIFERS: 2 loads Wed 310.00; 2 loads Fri morning 317.00

GRADE AND EIGHT (Grid): 2 loads Fri morning 320.00.

Click here for the current [National Crop Progress](#)

Click here for the current [Missouri Crop Progress](#)

The current hay directory can be found at: [Hay Directory](#).