

# Weekly Market Summary

Published by:  
Missouri Department of Agriculture  
Ag Business Development Division  
Market News Program



Chris Chinn, Director  
Jill Wood, Division Director  
Tony Hancock, Editor  
<http://www.ams.usda.gov/marketnews.htm>  
<http://www.ams.usda.gov/marketnews.htm>

Michael Kehoe, Governor

Volume XLV, Number 11 ♦ P.O. Box 630, Jefferson City, MO 65102 ♦ (573) 751-4211 ♦ Mon, Mar 17, 2025

## MISSOURI WEEKLY FEEDER CATTLE WEIGHTED AVERAGE REPORT

Feeder Cattle Receipts: 33,067 Week ago: 32,420 Year ago: 23,728  
Steers and Heifers Medium and Large 1—Weighted average weights and prices

### STEERS: Medium and Large 1

287 lbs. 488.37	473 lbs. 402.93	677 lbs. 319.65	874 lbs. 270.19
325 lbs. 449.33	526 lbs. 375.77	721 lbs. 299.55	925 lbs. 260.71
379 lbs. 438.64	569 lbs. 362.33	770 lbs. 286.21	984 lbs. 245.37
423 lbs. 422.93	621 lbs. 333.45	819 lbs. 276.85	

### HEIFERS: Medium and Large 1

282 lbs. 450.44	472 lbs. 352.82	672 lbs. 281.49	860 lbs. 235.09
323 lbs. 390.62	522 lbs. 330.92	730 lbs. 270.07	920 lbs. 237.06
377 lbs. 388.11	577 lbs. 321.49	767 lbs. 266.70	958 lbs. 229.61
424 lbs. 369.35	625 lbs. 296.85	827 lbs. 248.45	1045 lbs. 198.64

## MISSOURI STEER (HEIFER) STOCKER FORMULA 3/17/2025

Monday's Missouri Stocker formula consists of **5895 (5680)** head with a weighted average weight of **541.25 (533.51)** lbs. and a price value of **360.09 (321.73)**, 15.15 higher (15.57 higher) than a week ago.

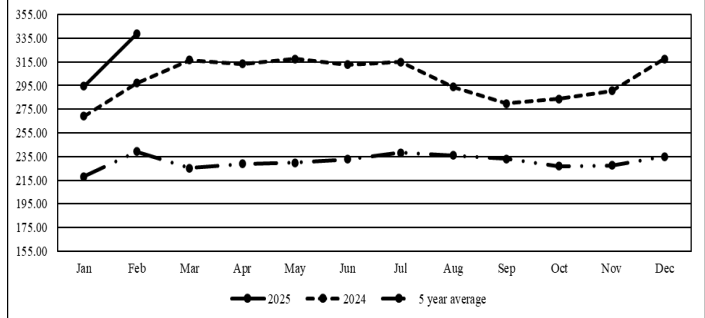
This a rolling seven day calculated weighted value which combines all Feeder Steers reported by MDA/USDA Market News Service weighing from 400-649 lbs. in the Medium and Large 1 and Medium and Large 1-2 frame and muscle classifications, including all comment cattle except Brahman X. Heifer values are in parentheses.

## MISSOURI WEEKLY CATTLE AUCTION SUMMARY

Total Receipts: 38,009 Week Ago: 367883 Year Ago: 28,143

Compared to last week, feeders sold fully 10.00 higher with most of the calves under 600 lbs. selling 10.00-20.00 higher. Markets moved firmly back to record levels for nearly all classes of cattle this week. Overall short supplies and green grass fever fueled the market at the auction barns and buyers were aggressively looking to fill orders. The CME feeder cattle index established a new record high, breeding stock found good demand as did slaughter animals. Regardless of where a producer might fall in the production arena current price levels are very satisfying if you are on the selling end. As the seasons are in transition mode the state saw all ends of the spectrum last week, most of the week was warm and sunny, winds have made fire a danger, however. Late wee the first severe weather of the season passed over the state with several tornados in the southern part of the state that sadly resulted in a lot of damage and some lives lost. Sunday morning much of the north half of the state woke up to with dusting to a couple inches of snow before it quickly melted away. Some stick out feeder sales around the state included 25 head of 478 lb. steers at Joplin Regional Stockyards for 427.00, 42 head of 548 lb. steers for 387.50 and 31 head of 874 lbs. steers for 283.50. Ozark Regional Stockyards sold 272 head of 570 lb. steers for 382.00. Windsor Livestock Auction sold 23 head of 622 lb. steers for 357.00. F & T Livestock Market sold 21 head of 708 lb. steers for 323.00. Lolli Brothers Livestock Market Sold 72 head of 761 lb. steers for 303.25. Kingsville Livestock Auction sold a load of 811 lb. steers for 285.00. Callaway Livestock Center sold 120 head of 924 lb. steers for 265.75. On the heifer side Windsor Livestock Auction sold 41 head of 525 lb. heifers for 351.00. Lolli Brothers Livestock Market sold three loads of heifers a few lbs. on either side of 750 lbs. for 282.25-283.00. Boxed beef cutouts were higher for the week. Choice closed on Friday at 318.27, up 3.37 and Select closed at 306.32, up 0.52 compared to last Friday. Negotiated feedlot sales as of the Friday afternoon report totaled just under 27K head as of the 2:00 report cutoff time. Trade was very slow to develop this week and additional sales likely occurred after the report cutoff time. Live and dressed sales ranged from 200.00-208.00 and dressed sales were reported from 320.00-330.00, both sharply higher than the previous week. The Missouri Stocker formula consists of 5895 head with a weighted average weight of 541.25 lbs. and a price value of 360.09, 15.57 lower than last week and just a few cents lower than the all-time record high set the previous day on Thursday. The steer/heifer spread is 38.36 per cwt.

Missouri Stocker Formula - Steers

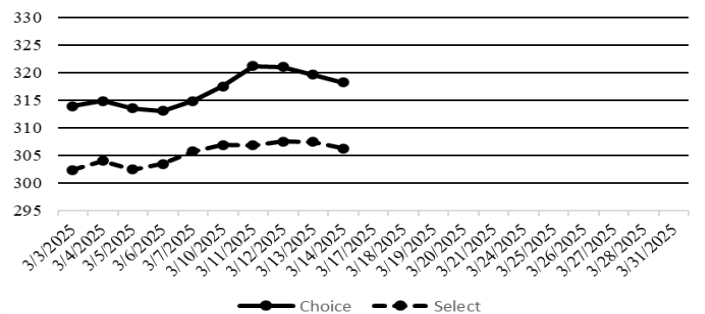


\*Graph is updated the first Monday of each month. Axis value ranges may be updated to reflect data points.

## NATIONAL BOXED BEEF CUTOOUT VALUES

DATE	CHOICE	SELECT	TOTAL LOADS
3/10	317.58	306.95	87
3/11	321.20	306.86	146
3/12	321.10	307.53	153
3/13	319.69	307.47	162
3/14	318.27	306.32	93
5 Day Simple Average	319.57	307.03	

Boxed Beef Cuts March 2025



\*Axis value ranges may be updated to reflect data points.

## WEEKLY LIVESTOCK SLAUGHTER 3/15/25

	CATTLE	HOGS	SHEEP
Week to Date:	587,000	2,515,000	38,000
Last Week:	578,000	2,418,000	39,000
Last Year:	597,391	2,456,991	44,237

### SOUTHWEST MISSOURI WEEKLY SUMMARY

(Joplin and Springfield)

Receipts: 13,3 Week ago: 14,709 Year Ago: 10,397  
Compared to last week, steers 10.00 to 25.00 higher and heifers 5.00 to 25.00 higher. Slaughter cows 2.00 lower to 2.00 higher. Slaughter bulls 4.00 lower to 2.00 higher.

#### FEEDER STEERS:

Medium and Large 1

250-300 lbs. 510.00-530.00  
300-400 lbs. 422.50-510.00  
400-500 lbs. 385.00-460.00  
500-600 lbs. 335.00-410.00  
600-700 lbs. 304.50-344.00  
700-800 lbs. 275.50-317.00  
800-900 lbs. 265.00-283.50  
900-1000 lbs. 258.00-266.00

#### FEEDER HEIFERS:

Medium and Large 1

300-400 lbs. 365.00-450.00  
400-500 lbs. 335.00-390.00  
500-600 lbs. 302.00-351.00  
600-700 lbs. 272.00-317.00  
700-800 lbs. 238.00-282.00  
800-900 lbs. 235.00-265.00  
900-950 lbs. 216.00-237.00  
28 hd 1047 lbs. 198.50

#### FEEDER HOLSTEIN STEERS

Large 3

350-400 lbs. 270.00-300.00  
450-500 lbs. 290.00-307.00  
500-600 lbs. 215.00-265.00  
600-700 lbs. 180.00-222.00  
700-750 lbs. 206.00-223.00  
800-900 lbs. 198.00-210.75  
950-1000 lbs. 185.00-208.00

SLAUGHTER COWS: Breaking and Boning (70-85% lean) 124.00-143.50; high dressing 137.50-154.00; low dressing 95.00-129.00. Lean (85-90%) 110.00-131.00.

SLAUGHTER BULLS: Yield Grade 1-2 1240-2385 lbs. 157.00-185.00; high dressing 180.00-207.00; low dressing 144.00-160.00

BRED COWS: Medium and Large 1 2-8 yrs 995-1555 lbs 2nd/3rd stage 2300.00-3050.00, 1st stage 2100.00-2400.00. Medium and Large 1-2 2-4 yrs 1st to 3rd stage 2400.00-2600.00; 2-8 yrs 785-1900 lbs 1st to 3rd stage 1700.00-2600.00 per head

BRED HEIFERS: Medium and Large 1 <2 yrs 963-1097 lbs 1st to 3rd stage 2500.00-2550.00; 2-4 yrs 1005-1240 lbs 1st to 3rd stage 2400.00-2900.00 per head

COW & CALF PAIRS: Medium and Large 1 2-8 yrs 878-1450 lbs with <150 to >300 lb calves 2800.00-3600.00; 2-8 yrs 1183-1940 lbs rebred 1st/2nd stage with 150 to >300 lb calves 3200.00-4100.00 per pair

### SOUTH CENTRAL MISSOURI WEEKLY SUMMARY

(West Plains, Phillipsburg)

Receipts: 4,889 Week ago: 4,098 Year Ago: 4,000  
Compared to last week, steers 4.00 to 15.00 higher, spots 20.00 higher. Slaughter cows steady to 2.00 lower. Slaughter bulls steady to 5.00 higher.

#### FEEDER STEERS:

Medium and Large 1

300-400 lbs. 380.00-465.00  
400-500 lbs. 375.00-437.50  
500-600 lbs. 336.00-382.00  
600-700 lbs. 302.00-345.00  
700-800 lbs. 278.00-295.00  
800-900 lbs. 260.00-272.00

#### FEEDER HEIFERS:

Medium and Large 1

300-400 lbs. 365.00-421.00  
400-500 lbs. 335.00-420.00  
500-600 lbs. 294.00-344.50  
600-700 lbs. 267.50-305.00  
700-800 lbs. 252.50-270.00  
22 hd 860 lbs. 235.00

#### FEEDER HOLSTEIN STEERS:

Large 3

Pkg 556 lbs. 210.00

SLAUGHTER COWS: Breaking and Boning (70-85% lean) 127.00-144.00, high dressing 137.00-160.50; low dressing 109.00-129.00. Lean (85-90%) 108.00-127.00

SLAUGHTER BULLS: Yield Grade 1-2 1135-2488 lbs. 154.00-176.00; high dressing 178.00-195.00; low dressing 130.00-154.00.

BRED COWS: Medium and Large 1-2 2-8 yrs 1060-1645 lbs 2nd/3rd stage 1950.00-2750.00, 1st stage 2000.00-2200.00 per head

BRED HEIFERS: Medium and Large 1-2 <2 yrs 1010-1075 lbs 1st to 3rd stage 1800.00-2000.00 per head

COW & CALF PAIRS: Medium and Large 1-2 2-8 yrs 1020-1375 lbs with 150 to >300 lb calves 2250.00-3600.00 per pair

### WEST CENTRAL MISSOURI WEEKLY SUMMARY

(Kingsville, Windsor, Butler)

Receipts: 5,848 Week ago: 7,019 Year ago: 4,612  
Compared to last week, steers and heifers 3.00 to 15.00 higher, spots up to 20.00 higher. Slaughter cows steady to 3.00 higher.

#### FEEDER STEERS:

Medium and Large 1

300-400 lbs. 431.00-489.00  
400-500 lbs. 381.00-447.50  
500-600 lbs. 349.00-402.00  
600-700 lbs. 307.50-365.00  
700-800 lbs. 274.00-318.00  
800-900 lbs. 267.75-285.00

#### FEEDER HEIFERS:

Medium and Large 1

300-400 lbs. 360.00-430.00  
400-500 lbs. 340.00-434.00  
500-600 lbs. 292.00-357.00  
600-700 lbs. 275.00-321.00  
700-800 lbs. 250.00-280.00  
800-900 lbs. 232.50-244.50

SLAUGHTER BULLS: Yield Grade 1-2 1430-2260 lbs. 160.00-183.00; high dressing 183.00-196.00; low dressing 157.00-162.00.

SLAUGHTER COWS: Breaking and Boning (70-85% lean) 126.00-153.00; high dressing 140.50-154.00. Lean (85-90%) 112.00-130.00.

BRED COWS: Medium and Large 1-2 5-8 yrs 1125-1435 lbs 2nd/3rd stage 2000.00-2650.00 per head

COW & CALF PAIRS: Medium and Large 1-2 >5 yrs 1275-1325 lbs with 150-300 lb calves 2950.00-3175.00; 5-8 yrs 1040 lbs rebred 2nd stage with >300 lb calves 4235.00 per pair

### NORTHEAST MISSOURI WEEKLY SUMMARY

(Bowling Green, Kingdom City, Palmyra)

Receipts: 7,129 Week ago: 4,720 Year ago: 3,656  
Compared to last week, steers under 700 lbs mostly 5.00 to 15.00 higher, 700-800 lbs 2.00 to 8.00 higher, over 800 lbs steady to firm. Heifers under 700 lbs mostly 5.00 to 10.00 higher, over 700 lbs higher undertone. Slaughter cows steady to firm.

#### FEEDER STEERS:

Medium and Large 1

400-500 lbs. 377.50-421.00  
500-600 lbs. 332.00-397.00  
600-700 lbs. 303.00-351.00  
700-800 lbs. 278.50-311.00  
800-850 lbs. 260.00-279.50  
900-950 lbs. 246.50-265.75

#### FEEDER HEIFERS:

Medium and Large 1

400-500 lbs. 335.00-385.00  
500-600 lbs. 300.00-351.00  
600-700 lbs. 275.00-309.00  
700-800 lbs. 263.00-279.00  
800-850 lbs. 257.00-259.00  
900-1000 lbs. 229.00-249.00

SLAUGHTER BULLS: Yield Grade 1-2 1375-2285 lbs. 159.00-189.00; high dressing 178.00-199.00; low dressing 143.00-169.00.

SLAUGHTER COWS: Breaking and Boning, (70-85% lean) 125.00-143.00; high dressing 139.00-158.00; low dressing 111.00-136.00. Lean (85-90%) 114.00-130.00

SLAUGHTER STEERS: Choice and Prime 2-4 210.00-213.50. Choice 2-3 203.00-206.50. Select and Choice 2-3 200.50-203.00.

SLAUGHTER HEIFERS: Choice and Prime 2-4 208.50-214.00. Choice 2-3 201.50-206.75.

BRED COWS: Scarce

COW CALF PAIRS: Scarce

### NORTH CENTRAL MISSOURI WEEKLY SUMMARY

(Macon, Unionville, Green City, New Cambria)

Receipts: 1,821 Week ago: 1,144 Year ago: 1,612  
Compared to last week, steers under 650 lbs not well tested, 650-700 lbs 4.00 to 8.00 higher, over 700 lbs higher undertone. Heifers 450-550 lbs 5.00 to 10.00 higher, 650-700 lbs steady, over 700 lbs 6.00 to 9.00 higher. Slaughter cows mostly steady on a light offering.

\*Some sale barns on a bi-weekly schedule and may not have a sale each week.

#### FEEDER STEERS:

Medium and Large 1

400-500 lbs. 379.00-445.00  
550-600 lbs. 354.50-378.00  
600-700 lbs. 310.00-340.00  
700-800 lbs. 298.50-303.25  
800-900 lbs. 267.00-281.75  
58 hd 911 lbs. 256.25

#### FEEDER HEIFERS:

Medium and Large 1

400-500 lbs. 333.00-390.00  
500-600 lbs. 301.00-345.50  
650-700 lbs. 275.00-283.00  
700-800 lbs. 280.50-283.00  
Pkg 836 lbs. 249.50

SLAUGHTER BULLS: Yield Grade 1-2 1600-1825 lbs. 181.00-188.00; low dressing 145.00-158.00

SLAUGHTER COWS: Breaking and Boning (70-85% lean) 125.00-140.00, high dressing 140.00-145.00. Lean (85-90%) 115.00-121.00

BRED COWS: Scarce

BRED HEIFERS: Scarce

### SOUTHEAST MISSOURI WEEKLY SUMMARY

(Jackson and Farmington)

Receipts: 1,401 Week ago: 1,481 Year ago:

Compared to last week, steers and heifers uneven from 6.00 lower to 9.00 higher. Slaughter cows steady to 3.00 higher. Slaughter bulls 2.00 to 3.00 higher.

#### FEEDER STEERS:

Medium and Large 1

300-400 lbs. 379.00-455.00  
400-500 lbs. 337.00-425.00  
500-600 lbs. 310.00-350.00  
600-700 lbs. 280.00-320.00  
700-800 lbs. 257.00-280.00  
800-900 lbs. 230.00-263.00

#### FEEDER HEIFERS:

Medium and Large 1

300-400 lbs. 325.00-405.00  
400-500 lbs. 320.00-367.00  
500-600 lbs. 282.00-345.00  
600-700 lbs. 250.00-300.00  
800-900 lbs. 225.00-234.00

SLAUGHTER BULLS: Yield  
Grade 1-2 1460-2520 lbs 141.00-  
161.00; high dressing 148.00-  
181.00.

SLAUGHTER COWS: Breaking  
and Boning (75-85% lean) 108.00-  
126.00; high dressing 123.00-  
149.00. Lean (85-90% lean) 81.00-  
105.00

BRED COWS: Medium and Large  
2 2-8 yrs 2-8 yrs 1045-1335 lbs  
3rd stage 1875.00-2500.00 per  
head

COW & CALF PAIRS: Medium  
and Large 2 2-8 yrs 1000-1250 lbs  
with baby to 300 lb calves 1950.00  
-3250.00 per pair

### EAST CENTRAL MISSOURI WEEKLY SUMMARY

(Cuba, Vienna)

Receipts: 1,677 Week Ago: 1,613 Year ago: 1,654

Compared to last week, steers and heifers steady to 12.00 higher. Slaughter cows steady to 2.00 higher.

#### FEEDER STEERS:

Medium and Large 1

400-500 lbs. 368.00-424.00  
500-600 lbs. 331.00-385.00  
600-700 lbs. 296.00-341.00  
700-750 lbs. 282.00-285.00  
Pkg 807 lbs. 269.75

#### FEEDER HEIFERS:

Medium and Large 1

300-400 lbs. 350.00-380.00  
400-500 lbs. 324.00-350.00  
500-600 lbs. 288.00-325.50  
600-700 lbs. 270.00-303.00  
16hd 748 lbs. 243.50-267.00

SLAUGHTER BULLS: Yield  
Grade 1-2 1475-2005 lbs 159.00  
-170.00; high dressing 176.00-  
176.50; low dressing 143.50-  
149.00.

SLAUGHTER COWS: Breaking  
and Boning, (70-85% lean) 130.00-  
145.00; high dressing 142.00-  
149.00. Lean (85-90%) 113.50-  
133.00.

BRED COWS: Medium and  
Large 1-2 2-8 yrs 1005-1392 lbs  
2nd/3rd stage 2250.00-2950.00;  
>5 yrs 1160-1390 lbs 1st to 3rd  
stage 1800.00-2450.00 per head

COW & CALF PAIRS: Scarce

### NORTHWEST MISSOURI WEEKLY SUMMARY

(Tina)

Receipts: 1,401 Week Ago: 2,004 Year Ago: 0

Compared to last week, steers and heifers mostly 10.00 to 25.00 higher. Slaughter cows and bulls mostly steady.

#### FEEDER STEERS:

Medium and Large 1

400-500 lbs. 377.00-451.50  
500-600 lbs. 352.50-387.50  
600-700 lbs. 302.50-355.00  
700-800 lbs. 279.00-288.25  
800-850 lbs. 274.35-282.25

#### FEEDER HEIFERS:

Medium and Large 1

300-400 lbs. 375.00-427.50  
400-500 lbs. 376.00-405.00  
500-600 lbs. 295.00-344.00  
600-650 lbs. 296.50-297.50

SLAUGHTER BULLS:  
Yield Grade 1-2 1220-2310 lbs  
159.00-174.00; high dressing  
181.50-182.00; low dressing  
150.00-153.00.

SLAUGHTER COWS: Breaking  
and Boning, (70-85% lean) 129.50-  
147.00; high dressing 142.00-  
152.00. Lean (85-90%) 119.00-  
135.00

BRED COWS: Scarce

COW/CALF PAIRS: Scarce

### AFTERNOON NATIONAL SLAUGHTER CATTLE REVIEW

So far for Friday negotiated cash trade has been light on moderate to good demand in the Southern Plains. A few purchases at mostly at 202.00, however, not enough for a full market trend. The latest reported market in the Southern Plains was last week with live FOB purchases at 197.00. In Nebraska and the Western Cornbelt, negotiated cash trade was light to moderate on good demand. Live FOB purchases in both regions traded mostly 3.00-5.00 higher at 205.00, on a light test. Dressed delivered purchases in Nebraska traded 8.00-10.00 higher at 325.00. Not enough dressed delivered purchases in the Western Cornbelt for a market trend. Last week in the Western Cornbelt dressed purchases traded from 315.00-320.00.

#### Negotiated Cash Sales:

<b>Confirmed:</b>	24,687	<b>Week Ago:</b>	39,867	<b>Year Ago:</b>	4,190
<b>Week to date:</b>	26,681	<b>Week Ago:</b>	54,572	<b>Year Ago:</b>	74,963

<u>Live Basis</u>	<u>Steers</u>	<u>Heifers</u>
<b>Over 80% Choice</b>	202.00-207.00, avg 205.30	202.00-206.00, avg 205.14
<b>65-80% Choice</b>	202.00-203.00, avg 202.17	202.00
<b>35-65% Choice</b>	-	-
<b>0-35% Choice</b>	-	-
<b>Total All Grades</b>	202.00-207.00, avg 204.90	202.00-206.00, avg 204.76
<b>Dressed Basis</b>		
<b>Over 80% Choice</b>	320.00-330.00, avg 324.95	320.00-330.00, avg 324.63
<b>65-80% Choice</b>	320.00-325.00, avg 324.61	320.00-325.00, avg 321.67
<b>35-65% Choice</b>	320.00	320.00
<b>0-35% Choice</b>	-	-
<b>Total All Grades</b>	320.00-330.00, avg 324.87	320.00-330.00, avg 323.62

<u>All Beef Type Steers/Heifers</u>	<u>Head</u>	<u>Avg Wt</u>	<u>Price Range</u>	<u>Wtd Avg</u>
Live FOB	11,511	1494.3	200.00-208.00	204.89
Live Del	719	1558.8	202.00-207.00	205.85
Dressed Del	11,406	951.8	320.00-330.00	324.43
Dressed FOB	946	993.8	325.00-326.00	325.72

#### WEEKLY COMMODITY FUTURES TRENDS

Compared to last week, Live Cattle 1.52 to 2.90 higher, Lean Hogs 0.73 to 2.05 lower, Feeder Cattle 3.05 to 5.48 higher.

#### Daily Futures Closes

	Mon.	Tues.	Wed.	Thu.	Fri.
Cattle					
Apr	200.57	199.55	201.40	202.05	203.17
Jun	197.22	196.25	197.87	198.27	199.35
Aug	195.10	194.27	195.55	195.95	196.70
Oct	195.87	195.22	196.40	196.55	197.27
Dec	197.45	197.05	198.12	198.00	198.57
Lean Hogs					
Apr	88.30	86.55	86.50	85.62	86.62
May	91.47	90.20	90.45	88.80	89.20
Jun	98.82	98.37	98.70	96.20	96.30
Jul	100.05	99.50	99.62	97.27	97.27
Aug	99.15	98.70	98.60	96.80	96.52
Fdr Cattle					
Mar	277.05	277.50	280.25	280.22	281.97
Apr	277.92	277.70	280.72	279.97	281.20
May	278.55	278.95	281.87	281.52	282.65
Aug	282.15	282.87	285.65	285.60	286.55
Sep	281.22	282.05	284.90	284.85	285.70
Milk					
Mar	18.42	18.49	18.58	18.59	18.54
Apr	17.16	17.44	17.82	18.10	17.56
May	17.56	17.62	17.90	18.14	17.73

## WEEKLY COMMODITY GRAIN FUTURES TRENDS

Compared to last week, Soybeans 0.08 to 0.11 lower, Wheat 0.06 to 0.12 higher, Corn 0.03 to 0.11 lower, KC Wheat 0.21 to 0.22 higher, Soybean Meal 1.50 to 2.40 higher.

Daily Grain Futures Closes

	Mon.	Tues.	Wed.	Thu.	Fri.
<b>Soybeans</b>					
Mar	999 3/4	997 3/4	987 1/2	996 3/4	999 1/4
May	1014	1011 1/4	1000 1/2	1010 3/4	1016
Jul	1028 1/4	1025 1/2	1015 1/2	1025	1030
Aug	1025 1/2	1023 1/4	1013 3/4	1021 3/4	1026 3/4
Sep	1013	1010 3/4	1001 1/2	1007 1/2	1012 3/4
<b>Wheat</b>					
Mar	545 1/4	541	538 3/4	547 1/4	545 3/4
May	562 1/2	556 3/4	554	562 1/2	557
Jul	577 1/4	571 3/4	569 1/2	578 1/4	573
Sep	593 1/2	588 1/2	586 1/4	594 3/4	589 3/4
Dec	615 1/4	611 1/4	609	617 1/4	613 1/4
<b>Corn</b>					
Mar	458 3/4	456 1/2	448 3/4	453 1/2	445 1/2
May	472	470 1/4	460 3/4	465 1/4	458 1/2
Jul	478 1/2	477	467 1/2	472 1/4	467 1/2
Sep	451 1/4	449 3/4	442 1/2	446 1/2	444 1/2
Dec	455	454 1/2	448 1/4	452 1/4	451
<b>KC Wheat</b>					
Mar	565 3/4	558 3/4	561 3/4	575	573 1/2
May	578 1/2	572	573	587 1/2	586
Jul	591 1/4	585 1/2	586 3/4	600 3/4	598 3/4
Sep	605 1/4	600	601 1/4	614 3/4	612
Dec	625 1/2	621	622	635 1/4	632
<b>SB Meal</b>					
Mar	294.40	294.10	292.40	300.30	298.90
May	302.30	301.80	300.20	307.10	305.90
Jul	309.50	309.10	307.20	313.90	313.20
Aug	311.60	311.20	309.00	315.40	315.10
Sep	313.20	312.80	310.30	316.30	316.10

## MISSOURI GRAIN WEEKLY TRENDS

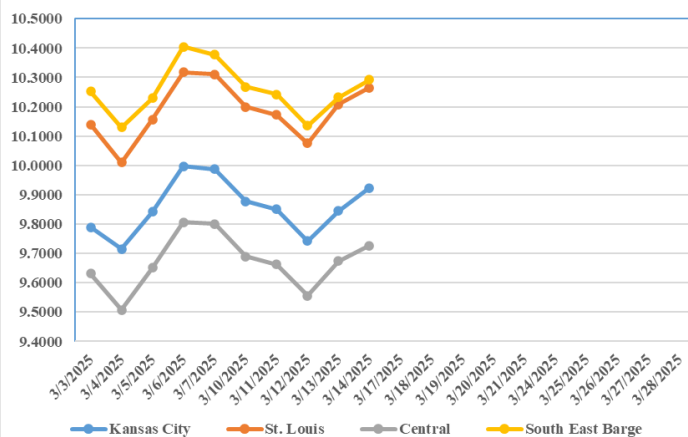
Compared to last week, Soybeans 0.03 to 0.09 lower, Wheat 0.06 to 0.16 higher, Corn 0.06 to 0.10 lower, Sorghum no trend due to lack of bids.

Area	#1 Soybeans	#2 Soft Wheat	#2 Corn	#2 Grain Sorghum
<b>Kansas City</b>				
Friday**	9.70-10.20	5.21	4.29-4.56	3.94
Monday	9.59-10.09	5.33	4.32-4.59	3.97
Tuesday	9.56-10.06	5.37	4.30-4.60	3.95
Wednesday	9.46-9.96	5.34	4.21-4.51	3.86
Thursday	9.56-10.06	5.43	4.25-4.55	3.90
Friday	9.61-10.11	5.37	4.19-4.49	3.84
<b>St. Louis</b>				
Friday**	10.31	5.37-5.53	4.71	—
Monday	10.20	5.49-5.65	4.74-4.75	—
Tuesday	10.17	5.43-5.59	4.72-4.73	—
Wednesday	10.07-10.09	5.40-5.59	4.64-4.67	—
Thursday	10.19-10.23	5.49-5.68	4.70	—
Friday	10.25-10.28	5.43-5.62	4.64-4.65	—
<b>Central</b>				
Friday**	9.75-9.85	5.21	4.29-4.39	—
Monday	9.64-9.74	5.33	4.32-4.42	—
Tuesday	9.61-9.71	5.27	4.35-4.40	—
Wednesday	9.51-9.61	5.24	4.26-4.31	—
Thursday	9.61-9.71	5.33	4.30-4.35	—
Friday	9.66-9.76	5.27	4.24-4.34	—
<b>S.E. MO</b>				
Friday**	10.35-10.40	—	4.71-4.79	—
Monday	10.24-10.29	—	4.73-4.82	—
Tuesday	10.21-10.26	—	4.72-4.80	—
Wednesday	10.11-10.16	—	4.63-4.71	—
Thursday	10.20-10.26	—	4.67-4.75	—
Friday	10.26-10.32	—	4.61-4.69	—

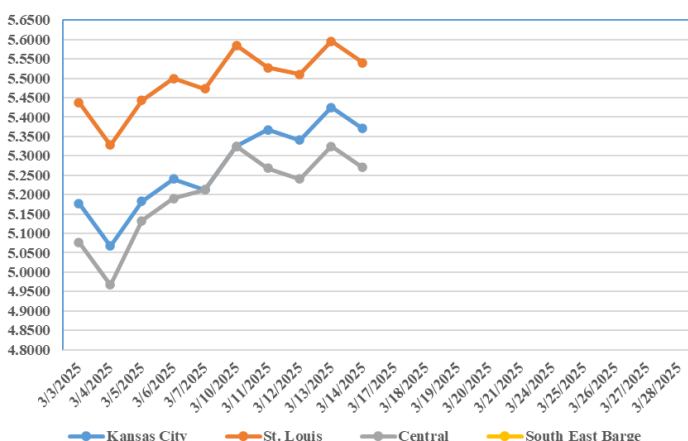
(PRICES PER BUSHEL) \*NEW CROP \*\*PREVIOUS WEEK'S PRICES  
\*Bids calculated using Kansas City, St. Louis, and St. Joseph bids

## MONTHLY GRAIN CROP

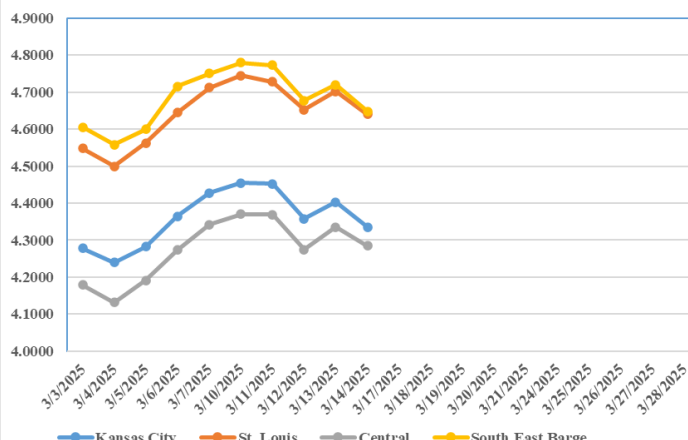
March 2025 Soybean Bids



March 2025 Wheat Bids



March 2025 Corn Bids



\*Axis value ranges may be updated to reflect data points.  
Only dates in which markets are trading and only current cash bids are represented.

## WHOLESALE FEEDSTUFFS PRICES (DOLLARS PER TON-BULK BASIS)

Area	Cottonseed Meal 41%	Soybean Meal 46.5-48%	Corn Gluten Pellets 21%	Wheat Middlings
Kansas City	295.00	284.90	203.00	121.50
St. Louis	290.00	n/a	193.00	92.50



### WORLD AGRICULTURAL SUPPLY AND DEMAND EST

**WHEAT:** The outlook for 2024/25 U.S. wheat this month is for larger supplies, unchanged domestic use, lower exports, and higher ending stocks. Supplies are raised on increased imports, up 10 million bushels to 140 million on a continued robust pace. By-class increases were made to Hard Red Spring (HRS) and Durum. Wheat exports are lowered 15 million bushels to 835 million, based on Census exports through January and expectations for sales and shipments for the remainder of the marketing year. By-class reductions were made to HRS, Soft Red Winter, and Durum. Projected 2024/25 ending stocks are raised 25 million bushels to 819 million, up 18 percent from last year. The season-average farm price is reduced \$0.05 per bushel to \$5.50 on NASS prices reported to date and price expectations for the remainder of the marketing year

**COARSE GRAINS:** This month's 2024/25 U.S. corn outlook is unchanged relative to last month. The season-average corn price received by producers is unchanged at \$4.35 per bushel.

**OILSEEDS:** U.S. 2024/25 soybean supply and use projections are unchanged this month. The soybean oil balance sheet includes higher exports and lower soybean oil used for biofuel. The season-average soybean price is projected at \$9.95 per bushel, down 15 cents from last month. Soybean meal and oil prices are unchanged at \$310 per short ton and 43 cents per pound, respectively.

### MISSOURI WEEKLY SHEEP/GOAT AUCTION SUMMARY

Receipts: 780 Week Ago: 1,278 Last Year: 977

**SHEEP:** Feeder lambs Small and Medium 1-2 hair 25-50 lbs 325.00-400.00. Small and Medium 2 hair pkg 41 lbs 305.00. Small and Medium 2-3 hair pkg 37 lbs 185.00.

Slaughter lambs Choice and Prime 1-3 hair 50-70 lbs 312.50-345.00; pkg 80 lbs 255.00; pkg 90 lbs 235.00. Choice 1-2 hair 45-60 lbs 290.00-305.00; 60-80 lbs 260.00-290.00; pkg 81 lbs 245.00; 95-105 lbs 210.00-215.00.

Slaughter ewes Utility and Good 1-2 95-165 lbs 109.00-120.00. Cull and Utility 1-2 pkg 80 lbs 83.00.

Replacement ewes hair Small and Medium 1-2 2-4 yrs 65-85 lbs open 135.00-170.00.

**GOATS:** Feeder kids Selection 1-2 27 hd 31 lbs 275.00.

Slaughter kids Selection 1 45-60 lbs 350.00-400.00. Selection 2 40-85 lbs 275.00-280.300. Selection 2-3 45-60 lbs 220.00-235.00.

Slaughter nannies/does Selection 1-2 70-95 lbs 145.00-155.00.

Explanatory Notes: Stage - Represents estimated lambing/kidding period (Open, Exp=exposed, Bred, Fall = Sep-Nov, Win = Dec-Feb, Spr = Mar-May, Sum=Jun-Aug; w/s = woolled and shorn; /hd= per head; /fam=per family  
All price CWT unless otherwise noted.

### MISSOURI DROUGHT MONITOR

Date	None	D0	D1	D2	D3	D4
3/11/25	56.84	32.20	10.01	0.95	0	0
3/4/25	44.12	38.26	15.49	2.13	0	0
3/12/24	3.83	50.58	41.76	3.83	0	0

Reflects percentage of Missouri impacted by drought. D0 Abnormally Dry; D1 Moderate Drought; D2 Severe Drought; D3 Extreme Drought; D4 Exceptional Drought

### NATIONAL DIRECT DELIVERED FEEDER PIG REPORT

3/14/25 Receipts: 113,581 Week ago: 122,295 Year Ago: 158,170

Early weaned pigs 8.00 lower and feeder pigs mostly steady.

Cash 68,300 head 37.00-70.00, weighted average 53.95

Formula 22,181 head 42.76-79.05, weighted average 61.07

Feeder pigs 40 pounds basis:

Cash 23,100 head 96.00-118.00, weighted average 106.18

### NATIONAL DAILY DIRECT PRIOR DAY HOG REPORTS 3/14/25

BARROWS AND GILTS (Carcass Basis): 2,682 head  
Base Carcass Price 86.00-94.00, weighted average 88.87

SOWS (Live Basis): 6,664 head  
300-500 lbs. 29.00-86.69  
Over 500 lbs. 68.26-88.00

### MISSOURI WEEKLY DIRECT SLAUGHTER CATTLE REPORT 3/14/25

Weekly Receipts: 240 Week ago: 240 Year ago: 280

Trading as of Friday morning, trade is light with flat dressed sales 3.00 higher and grid dressed sales 8.00 higher.

LIVE STEERS & HEIFERS: DRESSED STEERS & HEIFERS:  
No sales reported 4 loads Fri morning 320.00

GRADE AND EIGHT (Grid): 2 loads Friday 328.00

### MISSOURI WEEKLY HAY SUMMARY 3/13/2025

Very warm weather this week resulted in a lot of spring fever. There were a few acres of corn put in the ground around the state, some tillage and a lot of anhydrous being applied as well as pelleted fertilizer going on pastures and hay fields. Green is becoming more prominent each day and livestock are becoming less interested in cleaning up and more interested in chasing which ever springs of grass that have popped up the tallest. Still a lot of hay for sale around the state and some are looking to clean out before it is time for new crop others however are content on saving a few bales as some areas are already dry for this time of year. Hay prices are unevenly steady on most types of hay, extremely high-quality equine hay is steady to firm. The supply of hay is moderate to heavy, and demand is light to moderate. The Missouri Department of Agriculture has a hay directory at <https://apps.mda.mo.gov/haydirectory> or visit the University of Missouri Extension feed stuff finder at <https://feedstufffinder.org>

Alfalfa - Supreme 250.00-300.00, small square 8.00-12.00 per bale

Alfalfa - Premium 200.00-250.00

Alfalfa - Good 150.00-200.00, small square 6.00-10.00 per bale

Alfalfa - Fair 125.00-150.00

Mixed grass - Good/Premium 125.00-200.00

Mixed grass - Fair/Good 80.00-125.00, small square 3.50-8.00 per bale

Mixed grass - Fair 25.00-50.00 per large round bale

Wheat straw - 4.00-7.00 per small square bale

Corn Stalks - 10.00-25.00 per large round bale

Please Note: The above volumes (tonnage, acres, and bales) listed are for confirmed trades only, it does not include estimated volume (tonnage) for bids or offers to the trade. List your hay for sale at: [Hay Listing Online Form](#). Explanation of Hay Quality Guidelines: [Hay Quality Designation Guidelines](#). Glossary of Terms: [Livestock, Poultry, & Grain Hay Terms](#)

Click here for the current [National Crop Progress](#)

Click here for the current [Missouri Crop Progress](#)

The current hay directory can be found at: [Hay Directory](#).