

Weekly Market Summary

Published by:
Missouri Department of Agriculture
Ag Business Development Division
Market News Program



Chris Chinn, Director
Jill Wood, Division Director
Tony Hancock, Editor
<http://www.ams.usda.gov/marketnews.htm>
<http://www.ams.usda.gov/marketnews.htm>

Michael Kehoe, Governor

Volume XLV, Number 13 ♦ P.O. Box 630, Jefferson City, MO 65102 ♦ (573) 751-4211 ♦ Mon, Mar 31, 2025

MISSOURI WEEKLY FEEDER CATTLE WEIGHTED AVERAGE REPORT

Feeder Cattle Receipts: 28,116 Week ago: 28,851 Year ago: 22,553
Steers and Heifers Medium and Large 1—Weighted average weights and prices

STEERS: Medium and Large 1

275 lbs. 486.39	478 lbs. 410.07	664 lbs. 325.84	862 lbs. 274.23
327 lbs. 458.85	524 lbs. 386.80	713 lbs. 314.33	917 lbs. 272.03
373 lbs. 447.81	574 lbs. 368.15	778 lbs. 292.25	963 lbs. 250.19
422 lbs. 439.31	623 lbs. 340.12	821 lbs. 285.78	1010 lbs. 235.00

HEIFERS: Medium and Large 1

286 lbs. 448.50	470 lbs. 364.16	678 lbs. 291.33	860 lbs. 251.59
329 lbs. 417.25	522 lbs. 338.18	726 lbs. 281.65	921 lbs. 248.44
373 lbs. 405.45	579 lbs. 323.10	780 lbs. 263.64	1065 lbs. 231.00
426 lbs. 380.51	624 lbs. 302.90	826 lbs. 255.03	

MISSOURI STEER (HEIFER) STOCKER FORMULA 3/31/2025

Monday's Missouri Stocker formula consists of **5563 (5349)** head with a weighted average weight of **533.54 (530.53)** lbs. and a price value of **371.72 (329.68)**, 8.23 higher (6.27 higher) than a week ago.

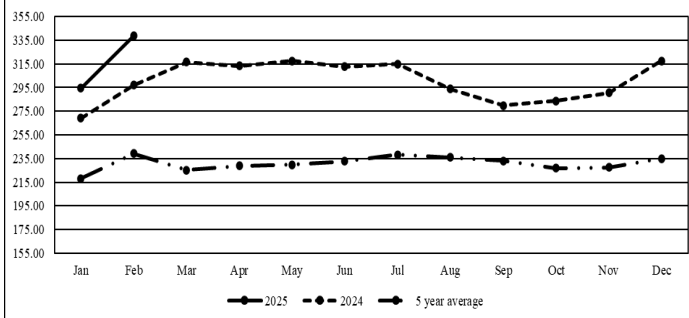
This is a rolling seven day calculated weighted value which combines all Feeder Steers reported by MDA/USDA Market News Service weighing from 400-649 lbs. in the Medium and Large 1 and Medium and Large 1-2 frame and muscle classifications, including all comment cattle except Brahman X. Heifer values are in parentheses.

MISSOURI WEEKLY CATTLE AUCTION SUMMARY

Total Receipts: 32,613 Week Ago: 33,462 Year Ago: 26,323

Compared to last week, feeders sold steady to 5.00 higher, with some lighter weights 10.00 higher. At the risk of sounding like a broken record markets continued to climb once again finding several new records to replace. Some areas of the state got back into the fields applying fertilizer, working ground and even getting some corn planted. This isn't the case statewide however as other areas are still much too wet and spring storms dropped even more rain this week. The supply of feeders was moderate and although there were still several loads of yearlings showing up calves are making up more of the supply each week. Demand is good to very good for all classes of cattle but those with less flesh and ready to eat grass and gain weight finding the best demand. Some stick out feeder sales around the state included 44 head of 408 lb. steers at Kingsville Livestock Auction that sold for 488.00. Joplin Regional Stockyards sold 20 head of 505 lb. steers for 395.00. Interstate Regional Stockyards sold 30 head of 583 lb. steers for 373.00 F & T Livestock Market sold 21 head of 601 lb. steers for 363.00. Callaway Livestock Center sold 24 head of 702 lb. steers for 330.00 as well as 60 head of 866 lb. steers for 289.10. Lolli Brothers Livestock Market sold 26 head of 757 lb. steers at 301.00. Kingsville Livestock Auction sold 144 head of 722 lb. heifers which were not bought as replacements for 295.00. Boxed beef cutouts were higher for the week. Choice closed on Friday at 332.82, up 7.37 and Select closed at 318.68, up 8.86 compared to last Friday. Negotiated feedlot sales as of the Friday afternoon report totaled near 25,500 head as of the 2:00 report cutoff time. Once again trade was slow to develop this week and additional sales likely occurred after the report cutoff time. Live and dressed sales ranged from 207.00-214.00 and dressed sales were reported from 330.00-345.00. Based on the limited volume as of Friday afternoon live sales were steady to slightly lower and dressed sales steady to 5.00 higher. The Missouri Stocker formula consists of 5563 head with a weighted average weight of 533.54 lbs. and a price value of 371.72, 8.23 higher than last week. The stocker formula set another record high mid-week before backing off slightly at the end to the week. The steer/heifer spread is 42.04 per cwt.

Missouri Stocker Formula - Steers

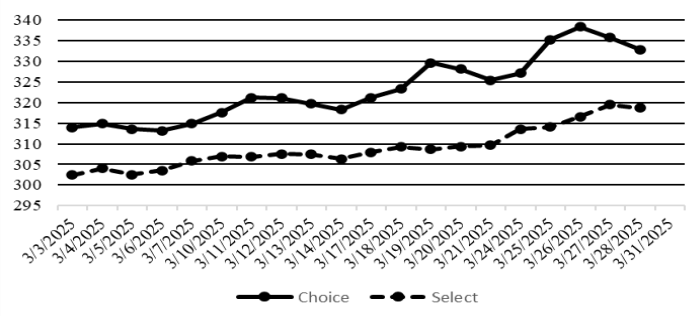


*Graph is updated the first Monday of each month. Axis value ranges may be updated to reflect data points.

NATIONAL BOXED BEEF CUTOUT VALUES

DATE	CHOICE	SELECT	TOTAL LOADS
3/24	327.10	313.58	79
3/25	335.19	314.05	126
3/26	338.30	316.53	140
3/27	335.72	319.44	117
3/28	332.82	318.68	133
5 Day Simple Average	333.83	316.46	

Boxed Beef Cuts March 2025



*Axis value ranges may be updated to reflect data points.

WEEKLY LIVESTOCK SLAUGHTER 3/29/25

	CATTLE	HOGS	SHEEP
Week to Date:	609,000	2,480,000	41,000
Last Week:	560,000	2,422,000	39,000
Last Year:	582,209	2,393,746	37,954

SOUTHWEST MISSOURI WEEKLY SUMMARY

(Joplin and Springfield)

Receipts: 12,339 Week ago: 12,197 Year Ago: 8,962
Compared to last week, steers and heifers steady to 10.00 higher, except some yearlings weak to 2.00 lower. Slaughter cows steady to 4.00 higher. Slaughter bulls steady to 2.00 higher.

FEEDER STEERS:

Medium and Large 1

300-400 lbs.	440.00-510.00
400-500 lbs.	395.00-475.00
500-600 lbs.	354.00-445.00
600-700 lbs.	310.00-360.00
700-800 lbs.	284.00-326.00
800-900 lbs.	268.00-294.00
900-1000 lbs.	248.00-267.50

FEEDER HEIFERS:

Medium and Large 1

300-400 lbs.	380.00-435.00
400-500 lbs.	350.00-410.00
500-600 lbs.	305.00-360.00
600-700 lbs.	275.50-322.00
700-800 lbs.	258.00-285.00
800-900 lbs.	242.00-261.00
900-950 lbs.	233.00-250.50

FEEDER HOLSTEIN STEERS

Large 3

350-400 lbs.	230.00-280.00
400-500 lbs.	235.00-285.00
500-600 lbs.	220.00-260.00
600-700 lbs.	195.00-240.00
750-800 lbs.	205.00-235.00
800-850 lbs.	185.00-227.50

BRED COWS: Medium and Large 1 2-8 yrs 1110-1495 lbs 2nd/3rd stage 2400.00-3000.00; >8 yrs 1190-1540 lbs 2nd/3rd stage 2235.00-2850.00. Medium and Large 1-2 2-4 yrs 1015-1065 lbs 2nd/3rd stage 2500.00-2600.00, 1st stage 1950.00-2300.00; 2-8 yrs 940-1595 lbs 2nd/3rd stage 1750.00-2700.00, 1st stage 1550.00-2250.00 per head

SLAUGHTER COWS: Breaking and Boning (70-85% lean) 126.00-145.50; high dressing 137.50-162.00; low dressing 110.00-134.00. Lean (85-90%) 115.00-133.40.

SLAUGHTER BULLS: Yield Grade 1-2 1085-2500 lbs. 162.50-180.00; high dressing 179.00-213.00; low dressing 135.00-165.00

COW & CALF PAIRS: Medium and Large 1 2-8 yrs 1742 lbs with 150-300 lb calves 3750.00. Medium and Large 1-2 2-8 yrs 1025-1420 lbs with baby to 300 lb calves 2225.00-3100.00; >8 yrs 1045-1060 lbs with baby calves 2650.00 per head

SOUTH CENTRAL MISSOURI WEEKLY SUMMARY

(West Plains, Phillipsburg)

Receipts: 4,095 Week ago: 3,899 Year Ago: 2,995
Compared to last week, steers and heifers steady to 8.00 higher, except some heifer calves early week steady to weak. Slaughter cows and bulls steady to 2.00 higher, some bulls early week steady to weak.

FEEDER STEERS:

Medium and Large 1

300-400 lbs.	400.00-472.50
400-500 lbs.	390.00-462.50
500-600 lbs.	368.00-392.50
600-700 lbs.	305.00-337.00
700-800 lbs.	283.00-308.00
800-900 lbs.	265.00-271.00
Pkg 904 lbs.	260.00

FEEDER HEIFERS:

Medium and Large 1

300-400 lbs.	382.00-440.00
400-500 lbs.	345.00-402.50
500-600 lbs.	298.00-350.00
600-700 lbs.	273.00-321.00
700-750 lbs.	268.00-269.00
800-900 lbs.	244.00-247.00

FEEDER HOLSTEIN STEERS:

Large 3

Scarce

SLAUGHTER COWS: Breaking and Boning (70-85% lean) 125.00-145.00, high dressing 138.50-156.00; low dressing 115.00-130.00. Lean (85-90%) 108.00-128.00

SLAUGHTER BULLS: Yield Grade 1-2 1300-2108 lbs. 155.00-171.00; high dressing 174.00-184.00; low dressing 140.00-158.50.

BRED COWS: Medium and Large 1 2-8 yrs 1290-1335 lbs 2nd/3rd stage 2725.00-2825.00. Medium and Large 1-2 2-8 yrs 2050.00-2600.00, 1st stage 1950.00-2100.00 per head
BRED HEIFERS: Medium and Large 1-2 <2 yrs 1000-1075 lbs 1st to 3rd stage 2000.00-2300.00 per head

COW & CALF PAIRS: Medium and Large 1-2 2-8 yrs 1175 lbs with 150-300 lb calves 2600.00; 2-8 yrs 1200 lbs rebred 1st or 2nd stage with 150-300 lb calves 3200.00 per pair

WEST CENTRAL MISSOURI WEEKLY SUMMARY

(Kingsville, Windsor, Butler)

Receipts: 4,436 Week ago: 4,454 Year ago: 5,040
Compared to last week, steer and heifers steady to 8.00 higher. Slaughter cows and bull steady to 3.00 higher.

FEEDER STEERS:

Medium and Large 1

400-500 lbs.	370.00-459.00
500-600 lbs.	342.50-390.00
600-700 lbs.	312.00-366.00
700-800 lbs.	279.75-327.50
800-900 lbs.	255.50-285.00
62hd 923 lbs.	273.50

SLAUGHTER BULLS: Yield Grade 1-2 1235-2105 lbs. 161.00-183.00; high dressing 183.00-195.00; low dressing 145.00-161.00.

BRED COWS: Scarce

FEEDER HEIFERS:

Medium and Large 1

300-400 lbs.	380.00-442.50
400-500 lbs.	346.00-405.50
500-600 lbs.	303.00-361.00
600-700 lbs.	282.00-329.25
700-800 lbs.	264.00-295.00
19 hd 840 lbs.	254.50

SLAUGHTER COWS: Breaking and Boning (70-85% lean) 131.00-153.00, high dressing 142.00-156.00. Lean (85-90%) 109.00-129.00.

COW & CALF PAIRS: Scarce

NORTHEAST MISSOURI WEEKLY SUMMARY

(Bowling Green, Kingdom City, Palmyra)

Receipts: 5,449 Week ago: 2,719 Year ago: 4,703
Compared to last week, steers 400-600 lbs 12.00 to 18.00 higher, 600-700 lbs 6.00 to 15.00 higher, over 700 lbs higher undertone with 900-950 lbs 11.00 higher. Heifers 400-600 lbs 15.00 to 20.00 higher, 600-700 lbs 10.00 to 15.00 higher, over 700 lbs higher undertone. Slaughter cows steady to 3.00 higher.

FEEDER STEERS:

Medium and Large 1

400-500 lbs.	390.00-445.00
500-600 lbs.	341.00-406.00
600-700 lbs.	300.00-363.00
700-800 lbs.	285.00-330.00
800-900 lbs.	263.00-289.10
900-950 lbs.	256.50-279.35

SLAUGHTER BULLS: Yield Grade 1-2 1350-2400 lbs. 162.00-184.00; high dressing 177.50-186.00; low dressing 152.00-166.00.

SLAUGHTER STEERS: Choice 2-3 205.00-216.00. Select and Choice 1-3 204.50. Select and Choice 2-3 204.50.

BRED COWS: Scarce

FEEDER HEIFERS:

Medium and Large 1

300-400 lbs.	375.00-450.00
400-500 lbs.	336.00-400.00
500-600 lbs.	312.00-370.00
600-700 lbs.	274.00-323.00
700-750 lbs.	266.00-273.50
800-900 lbs.	248.00-252.00

SLAUGHTER COWS: Breaking and Boning, (70-85% lean) 129.00-143.00; high dressing 139.00-155.50; low dressing 117.00-134.00. Lean (85-90%) 118.00-131.00.

SLAUGHTER HEIFERS: Choice 2-3 214.00-215.50. Select and Choice 1-3 203.00-204.00.

COW CALF PAIRS: Scarce

NORTH CENTRAL MISSOURI WEEKLY SUMMARY

(Macon, Unionville, Green City, New Cambria)

Receipts: 2,137 Week ago: 4,738 Year ago: 1,739
Compared to two weeks ago, steer and heifer calves firm to higher undertone, 550-750 lbs 10.00 to 20.00 higher. Slaughter cows 4.00 lower to 3.00 higher.

FEEDER STEERS:

Medium and Large 1

350-400 lbs.	409.00-448.00
400-500 lbs.	405.00-448.00
500-600 lbs.	341.00-411.50
600-700 lbs.	311.00-362.00
700-800 lbs.	297.50-320.00
Pkg 918 lbs.	248.00

SLAUGHTER BULLS: Yield Grade 1-2 1355-2265 lbs. 162.00-181.50; low dressing 157.00-159.00.

BRED COWS: Scarce

FEEDER HEIFERS:

Medium and Large 1

Pkg 370 lbs.	389.00
400-500 lbs.	350.00-398.00
500-600 lbs.	312.50-347.00
600-700 lbs.	277.00-308.00
700-800 lbs.	258.00-285.75

SLAUGHTER COWS: Breaking and Boning (70-85% lean) 128.00-144.00, high dressing 139.00-150.00. Lean (85-90%) 119.00-129.00

COW/CALF PAIRS: Scarce

SOUTHEAST MISSOURI WEEKLY SUMMARY

(Jackson and Farmington)

Receipts: 1,404 Week ago: 1,683 Year ago: 1,033
Compared to last week, 400-500 lb steers 13.00 higher, rest of the offering steady to 7.00 higher. Slaughter cows steady. Slaughter bull steady to 2.00 higher.

FEEDER STEERS: Medium and Large 1

300-400 lbs. 340.00-450.00
400-500 lbs. 350.00-450.00
500-600 lbs. 325.00-370.00
600-700 lbs. 277.00-324.00
700-750 lbs. 267.00-285.00

FEEDER HEIFERS: Medium and Large 1

300-400 lbs. 350.00-410.00
400-500 lbs. 320.00-385.00
500-600 lbs. 292.00-336.00
600-700 lbs. 250.00-305.00
700-800 lbs. 235.00-250.00

SLAUGHTER BULLS: Yield
Grade 1-2 1175-2175 lbs 135.00-
146.00, high dressing 146.00-
179.00.

SLAUGHTER COWS: Breaking
and Boning (75-85% lean) 120.00-
132.00; high dressing 130.00-
160.00. Lean (85-90% lean) 80.00-
115.00

BRED COWS: Medium and Large
2 2-8 yrs 1045-1435 lbs 2nd/3rd
stage 1700.00-3325.00, 1st stage
1250.00-2375.00 per head

COW & CALF PAIRS: Medium
and Large 2 2-8 yrs 1000-1475 lbs
with baby calves 2300.00-2850.00;
2-8 yrs 1225-1375 lbs with 150-
300 lb calves 2950.00-3050.00 per
pair

EAST CENTRAL MISSOURI WEEKLY SUMMARY

(Cuba, Vienna)

Receipts: 1,417 Week Ago: 2,007 Year ago: 836
Compared to last week, steers under 600 lbs 5.00 to 15.00 higher, over
600 lbs steady to 5.00 higher. Heifers under 550 lbs 10.00 to 25.00
higher, over 550 lbs steady to firm. Slaughter cows 1.00 to 3.00 higher.

FEEDER STEERS: Medium and Large 1

300-400 lbs. 400.00-470.00
400-500 lbs. 393.00-458.00
500-600 lbs. 343.00-402.00
600-700 lbs. 312.75-346.00
700-800 lbs. 278.50-306.00

FEEDER HEIFERS: Medium and Large 1

300-400 lbs. 375.00-427.50
400-500 lbs. 340.00-433.00
500-600 lbs. 297.00-370.00
600-650 lbs. 290.00-313.00

SLAUGHTER BULLS: Yield
Grade 1-2 1450-2130 lbs 147.50
-176.00; high dressing 175.50-
185.00; low dressing 136.50-
160.00

SLAUGHTER COWS: Breaking
and Boning, (70-85% lean) 135.00-
146.00; high dressing 146.50-
157.50. Lean (85-90%) 118.00-
136.50.

BRED COWS: Medium and
Large 1-2 yrs 2-8 yrs 980-1450
lbs 1st to 3rd stage 1850.00-
2600.00 per head

COW & CALF PAIRS: Scarce

NORTHWEST MISSOURI WEEKLY SUMMARY

(Tina)

Receipts: 709 Week Ago: 1,765 Year Ago: 1,015
Compared to last week, steer calves 5.00 to 15.00 higher, with weaned
and more attractive calves sharply higher. Heifer calves steady to 10.00
higher. Yearlings on a light supply. Slaughter cows and bulls steady.

FEEDER STEERS: Medium and Large 1

300-400 lbs. 457.50-505.00
400-500 lbs. 400.00-470.00
600-700 lbs. 318.50-352.50
Pkg 765 lbs. 288.50

FEEDER HEIFERS: Medium and Large 1

300-400 lbs. 423.00-440.00
400-500 lbs. 345.00-403.00
500-600 lbs. 310.00-344.00
600-650 lbs. 283.50-306.50

SLAUGHTER BULLS:
Yield Grade 1-2 1370-2070 lbs
165.00-178.00; high dressing IND
183.00; low dressing 158.00-
160.50.

SLAUGHTER COWS: Breaking
and Boning, (70-85% lean) 121.00-
144.00; high dressing 143.00-
147.50. Lean (85-90%) 116.50-
135.50

BRED COWS: Medium and
Large 1-2 2-8 yrs 1132-1320 lbs
2nd/3rd stage 2150.00-2310.00
per head

COW/CALF PAIRS: Medium and
Large 1-2 2-8 yrs 1000-1250 lbs
with <150 lb calves 3175.00-
3180.00 per head

AFTERNOON NATIONAL SLAUGHTER CATTLE REVIEW

So far for Friday in the Texas Panhandle, negotiated cash trade has been mostly inactive on light demand. In Kansas and the Western Cornbelt, negotiated cash trade has been light on moderate demand. A few live FOB purchases in Kansas traded at 209.00. Last week in the Southern Plains live FOB purchases traded at 210.00. Last week in the Western Cornbelt, live FOB purchases traded from 212.00-215.00 and dressed delivered purchases traded at 335.00. Negotiated cash trade in Nebraska has been light on moderate to good demand. Compared to last week, on a light test, dressed delivered purchases traded steady to 10.00 higher from 335.00-345.00. A few live FOB purchases traded at 213, however, not enough for a full market trend. Last week in Nebraska, live FOB purchases traded from 212.00-215.00.

Negotiated Cash Sales:

Confirmed:	15,462	Week Ago:	46,801	Year Ago:	22,326
Week to date:	25,490	Week Ago:	49,440	Year Ago:	59,849

<u>Live Basis</u>	<u>Steers</u>	<u>Heifers</u>
Over 80% Choice	209.00-214.00, avg 213.05	209.00-213.00, avg 211.65
65-80% Choice	207.00-209.00, avg 208.87	209.00
35-65% Choice	209.00	-
0-35% Choice	-	-
Total All Grades	207.00-214.00, avg 211.79	209.00-213.00, avg 211.52
<u>Dressed Basis</u>		
Over 80% Choice	335.00-345, avg 341.70	332.00-345.00, avg 338.48
65-80% Choice	332.00-345.00, avg 334.96	340.00
35-65% Choice	330.00	-
0-35% Choice	-	-
Total All Grades	330.00-345.00, avg 340.73	332.00-345.00, avg 338.75

<u>All Beef Type Steers/Heifers</u>	<u>Head</u>	<u>Avg Wt</u>	<u>Price Range</u>	<u>Wtd Avg</u>
Live FOB	7,958	1456.5	207.00-214.75	211.71
Live Del	149	1331.4	211.00-213.00	211.51
Dressed Del	6,755	944.2	330.00-345.00	339.25
Dressed FOB	532	977.9	332.00-340.00	338.81

WEEKLY COMMODITY FUTURES TRENDS

Compared to last week, Live Cattle 0.40 to 2.08 higher, Lean Hogs Apr 0.58 higher, others 1.18 to 2.12 lower, Feeder Cattle 0.07 to 1.95 higher.

Daily Futures Closes

	Mon.	Tues.	Wed.	Thu.	Fri.
Cattle					
Apr	205.90	206.37	207.07	209.55	208.82
Jun	202.15	202.32	203.02	205.80	204.85
Aug	199.05	198.87	199.35	201.80	201.00
Oct	198.97	198.60	198.77	200.72	199.72
Dec	199.47	199.27	199.37	201.07	200.32
Lean Hogs					
Apr	85.70	86.65	87.55	87.02	86.70
May	88.55	89.05	89.52	88.85	88.47
Jun	95.80	96.25	96.55	96.17	95.77
Jul	96.77	97.27	97.32	96.77	96.60
Aug	96.07	96.60	96.57	95.85	95.87
Fdr Cattle					
Mar	286.60	286.97	286.80	287.65	—
Apr	285.25	284.85	285.87	287.55	286.92
May	284.85	284.12	285.17	286.52	285.17
Aug	288.50	287.97	288.80	290.65	289.67
Sep	287.02	286.55	287.47	289.27	288.47
Milk					
Mar	18.49	18.52	18.54	18.66	18.65
Apr	17.05	17.18	17.08	17.18	17.17
May	17.32	17.52	17.46	17.69	17.53

WEEKLY COMMODITY GRAIN FUTURES TRENDS

Compared to last week, Soybeans 0.14 to 0.22 higher, Wheat 0.28 to 0.32 lower, Corn 0.08 to 0.11 lower, KC Wheat 0.30 to 0.38 lower, Soybean Meal 4.20 to 6.80 lower.

Daily Grain Futures Closes

	Mon.	Tues.	Wed.	Thu.	Fri.
Soybeans					
May	1007 1/4	1001 3/4	1001	1016 3/4	1023
Jul	1019 1/2	1015 1/2	1015	1030 1/2	1037 1/4
Aug	1015 1/4	1012 1/2	1012 1/2	1027	1034
Sep	1002	1001 1/2	1001 3/4	1015 3/4	1023 3/4
Nov	1006 1/2	1006 1/2	1006 3/4	1020 1/2	1029
Wheat					
May	548 1/4	543 1/4	535 1/4	532	528 1/4
Jul	565 1/4	559 3/4	551	547 1/4	542 3/4
Sep	582	576 1/2	568	564 1/4	559 1/4
Dec	604 3/4	599 1/2	591 1/4	588 3/4	583 1/2
Mar	623 1/2	618 1/4	610 1/4	609 1/4	603 3/4
Corn					
May	464 1/2	457 3/4	451 1/4	450	453 1/4
Jul	472	465 1/4	459	458	460
Sep	445	442	437	436 1/4	435 1/4
Dec	451 1/2	449	444 1/2	443 3/4	442 1/2
Mar	464	462	458	457	455 3/4
KC Wheat					
May	578	569 1/4	565	566 1/4	551 3/4
Jul	593	584 3/4	579 1/4	579 3/4	565 1/2
Sep	608 1/4	600 1/2	594 1/2	595	581 1/2
Dec	629 1/2	622 1/2	617	618 1/2	605 1/2
Mar	646 3/4	640 1/2	635 1/4	637 1/2	625
SB Meal					
May	297.60	295.10	293.60	294.50	293.50
Jul	304.90	302.90	301.40	301.80	300.90
Aug	306.80	305.10	303.60	303.90	303.20
Sep	307.90	306.50	305.10	350.40	304.90
Oct	308.50	307.30	306.00	306.30	306.00

MISSOURI GRAIN WEEKLY TRENDS

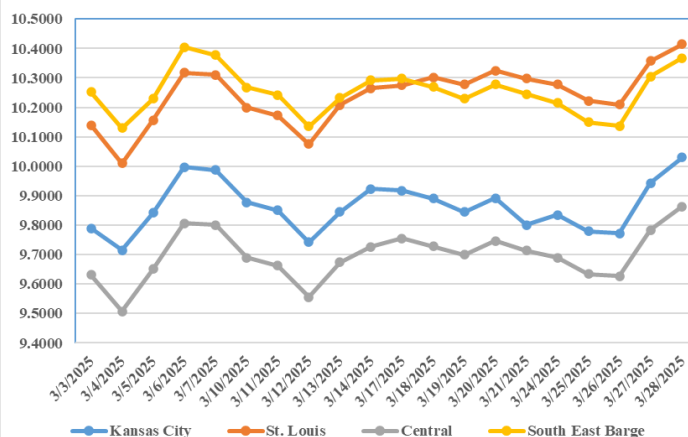
Compared to last week, Soybeans 0.11 to 0.18 higher, Wheat 0.30 lower, Corn 0.07 to 0.11 lower, Sorghum no trend due to lack of bids.

Area	#1 Soybeans	#2 Soft Wheat	#2 Corn	#2 Grain Sorghum
Kansas City				
Friday**	9.55-10.05	5.38	4.24-4.58	3.89
Monday	9.52-10.02	5.28	4.25-4.59	3.90
Tuesday	9.47-9.97	5.23	4.18-4.52	3.83
Wednesday	9.46-9.96	5.15	4.11-4.45	3.76
Thursday	9.62-10.12	5.12	4.10-4.44	3.75
Friday	9.68-10.23	5.08	4.13-4.47	3.78
St. Louis				
Friday**	10.30	5.42-5.58	4.71-4.73	—
Monday	10.27-10.28	5.32-5.48	4.74-4.75	—
Tuesday	10.22-10.23	5.27-5.43	4.67-4.68	—
Wednesday	10.20-10.22	5.19-5.35	4.60-4.62	—
Thursday	10.36	5.16-5.32	4.60-4.61	—
Friday	10.41-10.42	5.12-5.28	4.64	—
Central				
Friday**	9.65-9.75	5.28	4.34-4.39	—
Monday	9.62-9.72	5.18	4.35-4.40	—
Tuesday	9.57-9.67	5.13	4.28-4.33	—
Wednesday	9.56-9.66	5.05	4.21-4.26	—
Thursday	9.72-9.82	5.02	4.20-4.25	—
Friday	9.78-9.93	4.98	4.23-4.28	—
S.E. MO				
Friday**	10.22-10.26	—	4.69-4.76	—
Monday	10.17-10.23	—	4.70-4.77	—
Tuesday	10.07-10.19	—	4.63-4.70	—
Wednesday	10.05-10.17	—	4.56-4.64	—
Thursday	10.23-10.34	—	4.57-4.63	—
Friday	10.29-10.40	—	4.63-4.66	—

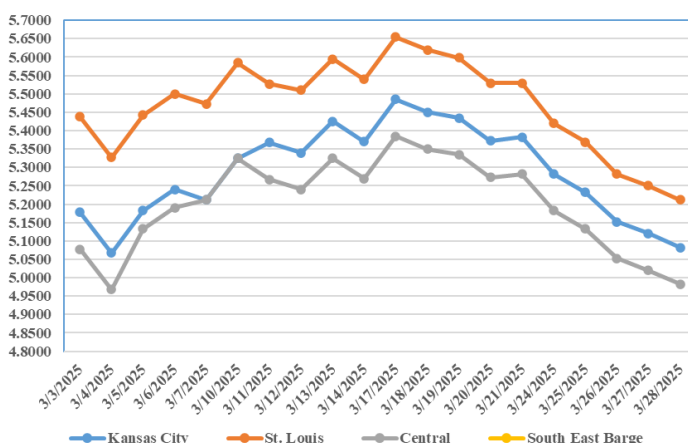
(PRICES PER BUSHEL) *NEW CROP **PREVIOUS WEEK'S PRICES
*Bids calculated using Kansas City, St. Louis, and St. Joseph bids

MONTHLY GRAIN CROP

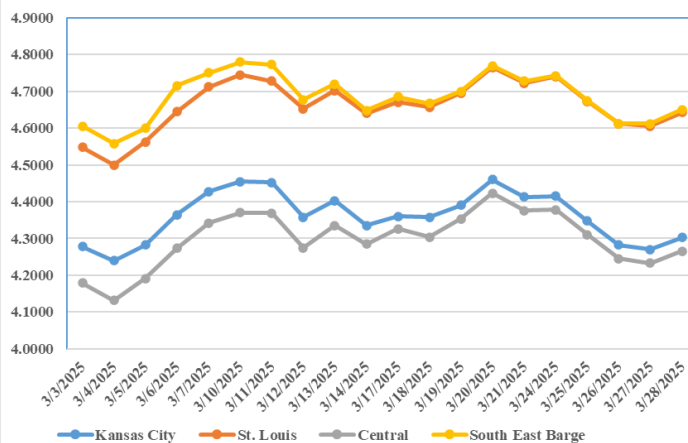
March 2025 Soybean Bids



March 2025 Wheat Bids



March 2025 Corn Bids



*Axis value ranges may be updated to reflect data points.
Only dates in which markets are trading and only current cash bids are represented.

WHOLESALE FEEDSTUFFS PRICES (DOLLARS PER TON-BULK BASIS)

Area	Cottonseed Meal 41%	Soybean Meal 46.5-48%	Corn Gluten Pellets 21%	Wheat Middlings
Kansas City	300.00	276.00	203.00	122.50
St. Louis	295.00	n/a	194.00	110.00

QUARTERLY HOGS AND PIGS

United States inventory of all hogs and pigs on March 1, 2025 was 74.5 million head. This was down slightly from March 1, 2024, and down 1 percent from December 1, 2024. Breeding inventory, at 5.98 million head, was down 1 percent from last year, and down slightly from the previous quarter. Market hog inventory, at 68.5 million head, was down slightly from last year, and down 1 percent from last quarter. The December 2024-February 2025 pig crop, at 33.7 million head, was down slightly from last year. Sows farrowing during this period totaled 2.89 million head, down 1 percent from previous year. The sows farrowed during this quarter represented 48 percent of the breeding herd. The average pigs saved per litter was 11.65 for the December 2024-February 2025 period, compared to 11.53 last year.

MISSOURI HOGS AND PIGS

Missouri inventory of all hogs and pigs on March 1, 2025 was 3.40 million head, down 1 percent from December 1, 2024 but up 5 percent from last year. **Breeding inventory**, at 420,000 head, was down 20,000 from the previous quarter and down 5,000 from last year. **Market hog inventory**, at 2.98 million head, was down 1 percent from last quarter but up 5 percent from last year.

The December-February 2025 pig crop, at 2.68 million head, was up 8 percent from 2024. Sows farrowing during this period totaled 225,000 head, up 5,000 from a year ago. The average pigs saved per litter was 11.90 for the December-February period, compared with 11.30 last year.

COLD STORAGE

Total natural cheese stocks in refrigerated warehouses on February 28, 2025 were up 2 percent from the previous month but down 5 percent from February 29, 2024.

Butter stocks were up 17 percent from last month and up 3 percent from a year ago.

Total frozen poultry supplies on February 28, 2025 were up 2 percent from the previous month but down 3 percent from a year ago. Total stocks of chicken were down 1 percent from the previous month but up 1 percent from last year. Total pounds of turkey in freezers were up 13 percent from last month but down 11 percent from February 29, 2024.

Total frozen fruit stocks were down 7 percent from last month but up 8 percent from a year ago.

Total frozen vegetable stocks were down 7 percent from last month and down 3 percent from a year ago.

Total red meat supplies in freezers were down 1 percent from the previous month and down 5 percent from last year. Total pounds of beef in freezers were down 6 percent from the previous month and down 2 percent from last year. Frozen pork supplies were up 4 percent from the previous month but down 8 percent from last year. Stocks of pork bellies were up 17 percent from last month but down 24 percent from last year.

MISSOURI WEEKLY HAY SUMMARY 3/27/2025

Farmers are starting to get back into fields and get some work done in some areas of the state. In contrast to what the latest drought monitor shows the areas of the state showing as the driest (northeast) seem to at least have the most topsoil moisture and very little work if any has been done. Feeding days are coming to an end very quickly and some hay producers are trying to clean out inventory especially if they don't have barns for storage before it is time to make this year's crop. Hay prices continue to hold mostly steady even as feeding and demand is light. The supply of hay is moderate. The Missouri Department of Agriculture has a hay directory at <https://apps.mda.mo.gov/haydirectory> or visit the University of Missouri Extension feed stuff finder at <https://feedstufffinder.org>

Alfalfa - Supreme 250.00-300.00, small square 8.00-12.00 per bale
Alfalfa - Premium 200.00-250.00
Alfalfa - Good 150.00-200.00, small square 6.00-10.00 per bale
Alfalfa - Fair 125.00-150.00
Mixed grass - Good/Premium 125.00-200.00
Mixed grass-Fair/Good 80.00-125.00, small square 3.50-8.00 per bale
Mixed grass - Fair 25.00-50.00 per large round bale
Wheat straw - 4.00-7.00 per small square bale
Corn Stalks - 10.00-25.00 per large round bale

MISSOURI WEEKLY SHEEP/GOAT AUCTION SUMMARY

Receipts: 778 Week Ago: 4,245 Last Year: 865
SHEEP: Feeder lambs Medium and Large 1-2 30-40 lbs 247.00-255.00. Small and Medium 1-2 hair 25-40 lbs 312.50-345.00; 40-50 lbs 275.00-320.00.
Slaughter lambs Choice and Prime 1-3 w/s pkg 61 lbs 310.00. Choice and Prime 1-3 hair 50-60 lbs 292.50-312.50; 60-85 lbs 275.00-302.00; 100-110 lbs 220.00-222.00.
Slaughter ewes Good 2-3 hair 70-100 lbs 132.00-142.00; 100-125 lbs 125.00-137.00. Utility and Good 2-3 hair 85-130 lbs 90.00-122.00. Cull and Utility 1-2 hair pkg 131 lbs 70.00.
Slaughter bucks 1-2 hair 155-195 lbs 90.00-127.00.
Replacement ewes Small and Medium 1-2 hair 1-2 yrs 103 lbs exp 220.00; 2-4 yrs 73 lbs exp 185.00; 4-6 yrs 65-95 lbs exp 147.50-155.00.
Families Small and Medium 1-2 4-6 yrs 110 lbs exp with baby lambs 210.00-225.00/fam.

GOATS: Feeder kids Selection 1 30-40 lbs 330.00-365.00; 40-50 lbs 312.00-350.00. Selection 2 20-30 lbs 235.00-290.00; 30-45 lbs 200.00-270.00.
Slaughter kids Selection 1 50-80 lbs 295.00-352.00. Selection 2 50-60 lbs 200.00-270.00.
Slaughter nannies/does Selection 1-2 50-60 lbs 145.00-152.00, thin 65.00-82.50; 70-85 lbs 100.00-147.00, thin 72.50; 100-130 lbs 92.50-150.00.
Slaughter bucks/billies 70-80 lbs 135.00-165.00; 120-130 lbs 130.00-165.00.
Wether kids Selection 2 pkg 56 lbs 277.00.
Replacement nannies/does Selection 1-2 yrs 60-70 lbs exp 320.00-420.00. Selection 1-2 1-2 yrs 60 lbs exp 242.00; 2-4 yrs 65-140 lbs exp 185.00-202.50. Selection 1-2 <1 yrs 50-60 lbs open 185.00-220.00.

Explanatory Notes: Stage - Represents estimated lambing/kidding period (Open, Exp=exposed, Bred, Fall = Sep-Nov, Win = Dec-Feb, Spr = Mar-May, Sum=Jun-Aug; w/s = woolled and shorn; /hd= per head; /fam=per family
All price CWT unless otherwise noted.

MISSOURI DROUGHT MONITOR

Date	None	D0	D1	D2	D3	D4
3/18/25	38.03	42.56	17.88	1.53	0	0
3/18/25	38.03	42.56	17.88	1.53	0	0
3/19/24	10.97	55.72	29.51	3.80	0	0

Reflects percentage of Missouri impacted by drought. D0 Abnormally Dry; D1 Moderate Drought; D2 Severe Drought; D3 Extreme Drought; D4 Exceptional Drought

NATIONAL DIRECT DELIVERED FEEDER PIG REPORT

3/28/25 Receipts: 1103,907 Week ago: 114,090 Year Ago: 118,309
Early weaned pigs 1.00 lower and feeder pigs 5.00 lower.
Cash 58,055 head 36.00-65.00, weighted average 50.97
Formula 29,590 head 45.17-57.05, weighted average 52.36
Feeder pigs 40 pounds basis:
Cash 16,262 head 88.00-107.00, weighted average 99.52

NATIONAL DAILY DIRECT PRIOR DAY HOG REPORTS 3/28/25

BARROWS AND GILTS (Carcass Basis): 5,396 head
Base Carcass Price 85.00-91.00, weighted average 88.08

SOWS (Live Basis): 7,131 head
300-500 lbs. 27.00-81.00
Over 500 lbs. 59.92-88.00

MISSOURI WEEKLY DIRECT SLAUGHTER CATTLE REPORT 3/28/25

Weekly Receipts: 320 Week ago: 480 Year ago: 280
Trading as of Friday morning, light as producers are passing lower bids. Grid sales 2.00 higher.

LIVE STEERS & HEIFERS: No sales reported
DRESSED STEERS & HEIFERS: 4 loads flat Fri 335.00

GRADE AND EIGHT (Grid): 2 loads late last Fri 340.00. Fri morning 2 loads 342.00

Click here for the current [National Crop Progress](#)
Click here for the current [Missouri Crop Progress](#)
The current hay directory can be found at: [Hay Directory](#).

Please Note: The above volumes (tonnage, acres, and bales) listed are for confirmed trades only, it does not include estimated volume (tonnage) for bids or offers to the trade. List your hay for sale at: [Hay Listing Online Form](#). Explanation of Hay Quality Guidelines: [Hay Quality Designation Guidelines](#). Glossary of Terms: [Livestock, Poultry, & Grain Hay Terms](#)