

# Weekly Market Summary

Published by:  
Missouri Department of Agriculture  
Ag Business Development Division  
Market News Program



Chris Chinn, Director  
Jill Wood, Division Director  
Tony Hancock, Editor  
<http://www.ams.usda.gov/marketnews.htm>  
<http://www.ams.usda.gov/marketnews.htm>

Michael Kehoe, Governor

Volume XLV, Number 15 ♦ P.O. Box 630, Jefferson City, MO 65102 ♦ (573) 751-4211 ♦ Mon, Apr 14, 2025

## MISSOURI WEEKLY FEEDER CATTLE WEIGHTED AVERAGE REPORT

Feeder Cattle Receipts: 13,496 Week ago: 27,857 Year ago: 23,985  
Steers and Heifers Medium and Large 1—Weighted average weights and prices

### STEERS: Medium and Large 1

314 lbs. 447.49	524 lbs. 360.34	724 lbs. 298.54	908 lbs. 258.77
378 lbs. 414.81	570 lbs. 341.78	764 lbs. 283.47	
426 lbs. 397.66	618 lbs. 327.62	819 lbs. 278.90	
470 lbs. 385.37	670 lbs. 310.45	850 lbs. 264.19	

### HEIFERS: Medium and Large 1

294 lbs. 409.76	472 lbs. 346.90	676 lbs. 272.45	859 lbs. 240.26
321 lbs. 391.14	523 lbs. 321.35	730 lbs. 272.33	918 lbs. 232.27
378 lbs. 376.50	580 lbs. 307.52	767 lbs. 256.03	
422 lbs. 364.30	620 lbs. 302.59	823 lbs. 251.08	

## MISSOURI STEER (HEIFER) STOCKER FORMULA 4/14/2025

Monday's Missouri Stocker formula consists of **3151 (2902)** head with a weighted average weight of **522.80 (515.52)** lbs. and a price value of **351.44 (319.49)**, 21.83 lower (10.11 lower) than a week ago.

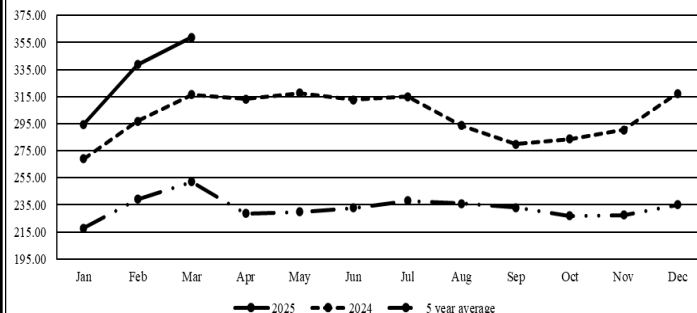
This a rolling seven day calculated weighted value which combines all Feeder Steers reported by MDA/USDA Market News Service weighing from 400-649 lbs. in the Medium and Large 1 and Medium and Large 1-2 frame and muscle classifications, including all comment cattle except Brahman X. Heifer values are in parentheses.

## MISSOURI WEEKLY CATTLE AUCTION SUMMARY

Total Receipts: 16,816 Week Ago: 34,424 Year Ago: 29,485

Compared to last week, steers and heifers mostly 5.00 to 10.00 lower, spots 15.00 to 20 lower mostly in early week sales. Demand was good with a light to moderate supply. Markets cautiously opened this week with volatile futures markets until mid-week when there was an announcement that some tariffs were being paused. Quite a few sale barns noted lighter-than-normal supply partially due to uncertainty in the markets. Live cattle futures closed on Friday uneven with the front months (April, June, August) 0.15 to 1.40 lower, but October and December 0.70 to 1.77 higher, compared to a week ago. Feeder cattle futures closed out the week 2.62 to 5.75 higher, counteracting the days that closed in the red. In feedlot trade, there were just under 49,000 head reported on Friday afternoon. Very little early week trade from 204.00 to 208.00 live and 327.00-328.00 dressed. Late week trade live up to 212.50 and dressed 325.00-328.00. Boxed beef cuts closed on Friday at 334.22 for choice and 313.96 for select, 4.23 lower and 3.22 lower for the week, respectively. The Missouri Stocker Formula consists of 3,151 head with a weighted average weight of 522.80 lbs and a price value of 351.44, 21.83 lower than a week ago. The first weekly crop progress report for the year was released last week. It showed 6 percent of Missouri's corn had been planted and 3 percent of soybeans had been planted, as of April 6. There's no doubt that plenty of headway has been made in the past week. The planters have been rolling and farmers are getting seed into the ground while there is some time between rain showers. Fertilizer buggies and spreader trucks have been hard at work spreading on pastures, too. Grass has been greening up and the warmer weather has encouraged growth. Last week's pasture condition was rated 94 percent in the fair, good, or excellent categories.

### Missouri Stocker Formula - Steers

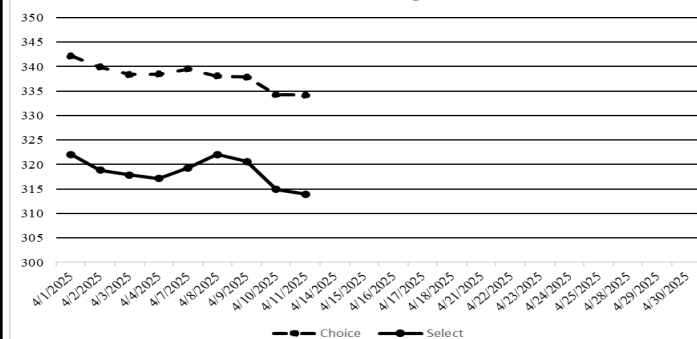


\*Graph is updated the first Monday of each month. Axis value ranges may be updated to reflect data points.

## NATIONAL BOXED BEEF CUTOUT VALUES

DATE	CHOICE	SELECT	TOTAL LOADS
4/7	339.50	319.30	91
4/8	338.10	322.06	144
4/9	337.86	320.61	154
4/10	334.29	314.96	113
4/11	334.22	313.96	102
5 Day Simple Average	336.79	318.18	

### Boxed Beef Cuts April 2025



\*Axis value ranges may be updated to reflect data points.

## WEEKLY LIVESTOCK SLAUGHTER 4/12/25

	CATTLE	HOGS	SHEEP
Week to Date:	564,000	2,492,000	41,000
Last Week:	591,000	2,514,000	42,000
Last Year:	597,882	2,481,486	36,746

### SOUTHWEST MISSOURI WEEKLY SUMMARY

(Joplin and Springfield)

Receipts: 5,220 Week ago: 13,120 Year Ago: 9,356  
Compared to last week, feeder calves 10.00 to 20.00 lower, yearlings 1.00 to 4.00 lower, spots up to 15.00 lower on yearling heifers early week.

#### FEEDER STEERS:

Medium and Large 1

300-400 lbs.	425.00-500.00
400-500 lbs.	375.00-417.50
500-600 lbs.	330.00-385.00
600-700 lbs.	300.00-330.00
700-800 lbs.	276.00-307.00
800-900 lbs.	264.00-279.00
900-950 lbs.	258.50-259.50

#### FEEDER HOLSTEIN STEERS

Large 3

300-400 lbs.	280.00-300.00
400-500 lbs.	235.00-300.00
Pkg 512 lbs.	260.00
Pkg 630 lbs.	222.00
800-900 lbs.	190.00-207.50
16 hd 937 lbs.	214.00
1000-1050 lbs.	186.00-210.75

BRED COWS: Medium and Large 1 2-8 yrs 1170-1590 lbs 2nd/3rd stage 2400.00-2800.00. Medium and Large 1-2 2-8 yrs 965-1575 lbs 2nd/3rd stage 1900.00-2800.00, 1st stage 2425.00-2625.00 per head

#### FEEDER HEIFERS:

Medium and Large 1

300-400 lbs.	360.00-415.00
400-500 lbs.	320.00-375.00
500-600 lbs.	295.00-320.00
600-700 lbs.	267.00-297.00
700-800 lbs.	250.00-267.00
800-900 lbs.	241.00-250.00
Pkg 1013 lbs.	209.00

SLAUGHTER COWS: Breaking and Boning (70-85% lean) 132.00-146.00; high dressing 144.50-157.50; low dressing 130.00-132.50. Lean (85-90%) 111.00-137.00.

SLAUGHTER BULLS: Yield Grade 1-2 1250-2435 lbs. 159.00-182.50; high dressing 180.00-208.00; low dressing 147.50-165.00

COW & CALF PAIRS: Medium and Large 1-2 2-8 yrs 1085-1095 lbs with 150-300 lb calves 2900.00-3000.00, 1065-1510 lbs rebred 1st stage with 150-300 lb calves 2575.00-3700.00; >8 yrs 940-1400 lbs with 150-300 lb calves 2300.00-3100.00 per pair

### WEST CENTRAL MISSOURI WEEKLY SUMMARY

(Kingsville, Windsor, Butler)

Receipts: 3,531 Week ago: 4,668 Year ago: 5,974  
Compared to last week, steers and heifers steady to 10.00 lower, however there were spots 15.00 to 20.00 lower early in the week on calves. Slaughter cows steady to 3.00 higher.

#### FEEDER STEERS:

Medium and Large 1

350-400 lbs.	377.50-419.00
400-500 lbs.	361.00-411.00
500-600 lbs.	320.50-398.00
600-700 lbs.	303.00-341.00
700-800 lbs.	286.50-305.00
Pkg 987 lbs.	221.00

SLAUGHTER BULLS: Yield Grade 1-2 1355-2340 lbs. 169.00-185.00; high dressing 185.00-197.00; low dressing 151.00-169.00.

BRED COWS: Medium and Large 1 5-8 yrs 1378-1565 lbs 2nd/3rd stage 2675.00-2700.00. Medium and Large 1-2 5-8 yrs 1228 lbs 2nd/3rd stage 2000.00 per head

#### FEEDER HEIFERS:

Medium and Large 1

300-400 lbs.	357.00-405.00
400-500 lbs.	316.00-382.50
500-600 lbs.	290.00-341.00
600-700 lbs.	276.00-320.25
700-800 lbs.	248.00-283.75
800-900 lbs.	234.00-251.00

SLAUGHTER COWS: Breaking and Boning (70-85% lean) 132.50-152.00; high dressing 148.00-158.00. Lean (85-90%) 112.50-132.00.

COW & CALF PAIRS: Scarce

### NORTHEAST MISSOURI WEEKLY SUMMARY

(Bowling Green, Kingdom City, Palmyra)

Receipts: 3,717 Week ago: 4,417 Year ago: 6,146  
Compared to last week, steers under 600 lbs unevenly steady, over 600 lbs lightly tested with a lower undertone. Heifers under 600 lbs mostly 5.00 to 12.00 lower, over 600 lbs steady on comparable sales. Slaughter cows steady to 3.00 higher.

#### FEEDER STEERS:

Medium and Large 1

300-400 lbs.	415.00-485.00
400-500 lbs.	375.00-432.50
500-600 lbs.	335.00-391.00
600-700 lbs.	305.50-339.50
700-800 lbs.	274.00-313.00

SLAUGHTER BULLS: Yield Grade 1-2 1380-2445 lbs. 164.00-189.00; high dressing 177.00-189.00; low dressing 155.00-164.00.

SLAUGHTER STEERS: Choice 2 -3 206.50-214.00. Select and Choice 1-3 201.00-205.00. Select and Choice 2-3 201.00-207.50.

BRED COWS: Scarce

#### FEEDER HEIFERS:

Medium and Large 1

300-400 lbs.	372.50-415.00
400-500 lbs.	342.00-380.00
500-600 lbs.	300.00-340.00
600-700 lbs.	282.00-307.00
700-800 lbs.	249.00-274.00
Pkg 872 lbs.	245.50

SLAUGHTER COWS: Breaking and Boning, (70-85% lean) 130.00-144.00; high dressing 139.50-159.00; low dressing 121.00-136.00. Lean (85-90%) 117.00-132.00.

SLAUGHTER HEIFERS: Choice 2-3 207.00-213.00. Select and Choice 2-3 206.50-207.00.

COW CALF PAIRS: Scarce

### SOUTH CENTRAL MISSOURI WEEKLY SUMMARY

(West Plains, Phillipsburg)

Receipts: 1,350 Week ago: 3,234 Year Ago: 3,097  
Compared to last week, steers under 425 lbs 15.00 to 25.00 lower, heavier weights 7.00 lower to 3.00 higher. Heifers 4.00 to 8.00 lower. Slaughter cows and bulls steady to 2.00 higher.

#### FEEDER STEERS:

Medium and Large 1

300-400 lbs.	387.50-437.50
400-500 lbs.	372.50-405.00
500-600 lbs.	339.00-391.00
600-700 lbs.	277.50-336.00
750-800 lbs.	270.00-275.00

#### FEEDER HOLSTEIN STEERS:

Large 3

Scarce

Scarce

#### FEEDER HEIFERS:

Medium and Large 1

300-400 lbs.	360.00-400.00
400-500 lbs.	352.50-400.00
500-600 lbs.	292.00-345.00
600-700 lbs.	270.00-283.00
700-800 lbs.	269.50-273.00

SLAUGHTER COWS: Breaking and Boning (70-85% lean) 128.50-146.00; high dressing 143.50-159.00; low dressing 114.00-136.00. Lean (85-90%) 118.00-130.00

SLAUGHTER BULLS: Yield Grade 1-2 1260-2365 lbs. 160.00-178.50; high dressing 176.00-180.00; low dressing 138.50-158.00.

COW & CALF PAIRS: Medium and Large 1-2 2-8 yrs 1325 lbs with 150-300 lb calves 3500.00-3775.00 per pair

BRED COWS: Medium and Large 1-2 2-8 yrs 1125-1373 lbs 2nd/3rd stage 2100.00-2800.00, 1st stage 1900.00-2075.00 per head

BRED HEIFERS: Medium and Large 1-2 <2 yrs 980-1075 lbs 1st to 3rd stage 1800.00-2100.00 per head

### NORTH CENTRAL MISSOURI WEEKLY SUMMARY

(Macon, Unionville, Green City, New Cambria)

Receipts: 466 Week ago: 3,226 Year ago: 680  
No feeder sales this week.

\*Some sale barns on a bi-weekly schedule and may not have a sale each week.

#### FEEDER STEERS:

Medium and Large 1

400-500 lbs.	Scarce
500-600 lbs.	
600-700 lbs.	
700-800 lbs.	
800-900 lbs.	

SLAUGHTER BULLS: Scarce

#### FEEDER HEIFERS:

Medium and Large 1

Pkg 379 lbs.	Scarce
400-500 lbs.	
500-600 lbs.	
600-700 lbs.	
700-800 lbs.	

SLAUGHTER COWS: Scarce

BRED COWS: Medium and Large 1 2-8 yrs 1200-1300 lbs 2nd stage 3025.00-3310.00. Medium and Large 1-2 5-8 yrs 1190-1600 lbs 2nd stage 2500.00-2975.00; >5 yrs 1215 lbs 2nd stage 2200.00 per head

HEIFER PAIRS: Medium and Large 1 <2 yrs 1200 lbs with <150 lb calves 4350.00-4400.00; 1145 lbs fancy with <150 lb calves 5000.00 per pair

### SOUTHEAST MISSOURI WEEKLY SUMMARY

(Jackson and Farmington)

Receipts: 708 Week ago: 1,698 Year ago: 990

Too few receipts for a market comparison on feeder cattle. Slaughter cows steady to 2.00 lower. Slaughter bulls steady.

#### FEEDER STEERS:

Medium and Large 1

300-400 lbs. 392.00-427.00  
400-500 lbs. 372.00-437.00  
500-600 lbs. 327.00-367.00  
600-700 lbs. 287.00-300.00  
700-750 lbs. 255.00-265.00

#### FEEDER HEIFERS:

Medium and Large 1

300-400 lbs. 312.00-400.00  
400-500 lbs. 310.00-375.00  
500-550 lbs. 280.00-310.00  
600-650 lbs. 250.00-258.00  
700-750 lbs. 241.00-260.00

SLAUGHTER BULLS: Yield  
Grade 1-2 1220-2385 lbs 130.00-  
150.00; high dressing 155.00-  
179.00.

SLAUGHTER COWS: Breaking  
and Boning (75-85% lean) 119.00-  
130.00; high dressing 130.00-  
150.00. Lean (85-90% lean)  
100.00-115.00

BRED COWS: Medium and Large  
2 2-8 yrs 1070-1548 lbs 1st to 3rd  
stage 1475.00-2750.00 per head

COW & CALF PAIRS: Medium  
and Large 2 >8 yrs 1400 lbs with  
<150 lb calves 2700.00 per pair

### EAST CENTRAL MISSOURI WEEKLY SUMMARY

(Cuba, Vienna)

Receipts: 723 Week Ago: 2,282 Year ago: 2,134

Compared to last week, steers and heifers steady to 15.00 lower on a limited test. Slaughter cows steady to firm.

#### FEEDER STEERS:

Medium and Large 1

350-400 lbs. 417.00-420.00  
400-500 lbs. 370.00-417.00  
500-600 lbs. 330.00-358.00  
600-700 lbs. 305.50-342.00

#### FEEDER HEIFERS:

Medium and Large 1

350-400 lbs. 368.00-384.50  
Pkg 457 lbs. 352.00  
500-600 lbs. 296.00-320.00

SLAUGHTER BULLS: Yield  
Grade 1-2 1420-2415 lbs 160.00  
-180.00; high dressing 189.00-  
198.00; low dressing 144.00-  
158.00

SLAUGHTER COWS: Breaking  
and Boning, (70-85% lean) 132.00-  
145.00; high dressing 147.00-  
150.00. Lean (85-90%) 112.00-  
128.50.

BRED COWS: Medium and  
Large 1-2 2-8 ys 910-1415 lbs  
2nd/3rd stage 2150.00-2450.00,  
1st/2nd stage 1750.00-2485.00  
per head

COW & CALF PAIRS: Scarce

### NORTHWEST MISSOURI WEEKLY SUMMARY

(Tina)

Receipts: 1,101 Week Ago: 1,779 Year Ago: 1,108

Compared to last week, steers and heifers mostly 5.00 to 15.00 lower, sharply lower on the less attractive feeder calves. Slaughter cows and bulls 1.00 to 3.00 higher.

#### FEEDER STEERS:

Medium and Large 1

300-400 lbs. 411.00-432.50  
400-500 lbs. 369.00-420.00  
500-600 lbs. 339.00-395.00  
600-700 lbs. 304.00-338.00  
750-800 lbs. 270.00-271.50

#### FEEDER HEIFERS:

Medium and Large 1

300-400 lbs. 382.50-407.50  
400-500 lbs. 341.00-370.00  
500-600 lbs. 300.00-341.00  
600-700 lbs. 276.00-288.00  
119 hd 814 lbs. 252.00

#### SLAUGHTER BULLS:

Yield Grade 1-2 1395-2375 lbs  
176.00-185.00; high dressing  
186.00-189.00; low dressing  
159.50-167.00.

#### SLAUGHTER COWS:

Breaking  
and Boning, (70-85% lean) 125.00-  
145.50; high dressing 141.00-  
158.00. Lean (85-90%) 120.00-  
138.00

BRED COWS: Medium and  
Large 1-2 2-8 yrs 1155-1360 lbs  
2nd/3rd stage 2225.00-2500.00  
per head

COW/CALF PAIRS: Scarce

### AFTERNOON NATIONAL SLAUGHTER CATTLE REVIEW

So far for Friday in all regions, negotiated cash trading has been limited on light demand. Last week in the Southern Plains, live FOB purchases traded at 208.00. In Nebraska and the Western Cornbelt, the last reported market was on Thursday with live FOB purchases at 208.00 and dressed delivered purchases from 327.00-328.00.

#### Negotiated Cash Sales:

<b>Confirmed:</b>	5,623	<b>Week Ago:</b>	30,442	<b>Year Ago:</b>	43,338
<b>Week to date:</b>	48,790	<b>Week Ago:</b>	67,092	<b>Year Ago:</b>	62,098

<u>Live Basis</u>	<u>Steers</u>	<u>Heifers</u>
<b>Over 80% Choice</b>	204.00-210.00, avg 208.13	208.00
<b>65-80% Choice</b>	-	204.00
<b>35-65% Choice</b>	-	-
<b>0-35% Choice</b>	-	-
<b>Total All Grades</b>	204.00-210.00, avg 208.13	204.00-208.00, avg 206.61
<u>Dressed Basis</u>		
<b>Over 80% Choice</b>	325.00-328.00, avg 327.41	325.00
<b>65-80% Choice</b>	-	-
<b>35-65% Choice</b>	-	-
<b>0-35% Choice</b>	-	-
<b>Total All Grades</b>	325.00-328.00, avg 327.41	325.00

<u>All Beef Type Steers/Heifers</u>	<u>Head</u>	<u>Avg Wt</u>	<u>Price Range</u>	<u>Wtd Avg</u>
Live FOB	4,162	1451.0	201.00-212.50	207.69
Live Del	377	1397.6	207.00-210.00	208.77
Dressed Del	331	956.6	325.00-328.00	326.86
Dressed FOB	140	984.0	330.00	330.00

#### WEEKLY COMMODITY FUTURES TRENDS

Compared to last week, Live Cattle uneven from 1.40 lower to 1.77 higher, Lean Hogs Apr 1.95 lower, others 0.50 to 1.77 higher, Feeder Cattle 2.62 to 5.75 higher.

#### Daily Futures Closes

	Mon.	Tues.	Wed.	Thu.	Fri.
Cattle					
Apr	198.92	199.10	202.80	200.85	202.47
Jun	194.17	193.62	198.37	195.20	196.80
Aug	190.52	190.45	195.00	192.20	193.85
Oct	189.35	189.72	193.95	191.87	193.80
Dec	190.52	191.10	195.15	193.30	195.47
Lean Hogs					
Apr	87.80	87.82	86.97	86.00	85.42
May	84.07	84.60	86.12	86.50	86.57
Jun	90.05	89.77	91.70	93.17	93.32
Jul	89.85	89.20	91.27	93.12	93.60
Aug	88.55	87.85	89.32	91.42	91.90
Fdr Cattle					
Apr	277.82	280.42	283.75	282.77	285.17
May	271.27	271.72	278.20	275.30	278.70
Aug	278.05	277.60	283.25	279.92	283.67
Sep	277.47	277.07	282.45	279.47	283.22
Oct	275.95	275.60	280.87	278.02	281.80
Milk					
Apr	17.10	17.15	17.25	17.24	17.22
May	16.78	16.92	17.39	17.45	17.27
Jun	16.69	16.73	17.31	17.29	16.93

## WEEKLY COMMODITY GRAIN FUTURES TRENDS

Compared to last week, Soybeans 0.41 to 0.65 higher, Wheat 0.22 to 0.28 higher, Corn 0.15 to 0.30 higher, KC Wheat 0.11 to 0.14 higher, Soybean Meal 11.40 to 16.50 higher.

### Daily Grain Futures Closes

	Mon.	Tues.	Wed.	Thu.	Fri.
Soybeans					
May	983	992 3/4	1012 3/4	1029	1042 3/4
Jul	997	1004	1023 1/2	1036 3/4	1053
Aug	992 1/2	996 3/4	1016 1/2	1027 1/4	1045 1/2
Sep	978	976	995 3/4	1004 1/2	1024 1/4
Nov	981	977 3/4	997	1004 3/4	1025 1/2
Wheat					
May	536 1/2	540	542 1/4	538	555 3/4
Jul	550 1/2	554	555 3/4	553 1/2	570 1/4
Sep	564 1/2	568 3/4	569 3/4	568	584
Dec	584 1/4	590 3/4	591 3/4	590 1/2	605 3/4
Mar	605 1/4	609 1/4	609 3/4	609 1/2	623 1/2
Corn					
May	464 1/2	469	474	483	490 1/4
Jul	470 3/4	474 3/4	480 1/2	488 3/4	497
Sep	439	438 3/4	442 1/2	446 1/2	456 1/4
Dec	446	445 3/4	450 3/4	454 1/4	463 1/2
Mar	459 1/2	458	463	465 1/2	475 1/4
KC Wheat					
May	559 1/4	561 1/2	568	558	568
Jul	572 3/4	575	580 1/4	573	583 1/4
Sep	586 3/4	589 3/4	594 1/4	588	598
Dec	608 3/4	611 1/2	616 1/4	610 1/4	620 3/4
Mar	627 1/4	629 1/2	634	628 1/2	639
SB Meal					
May	288.40	291.00	294.50	297.90	299.60
Jul	295.50	297.30	300.70	304.20	305.90
Aug	297.20	298.80	301.90	305.30	307.10
Sep	298.50	299.60	302.50	305.70	307.60
Oct	298.90	299.60	302.40	305.30	307.00

## MISSOURI GRAIN WEEKLY TRENDS

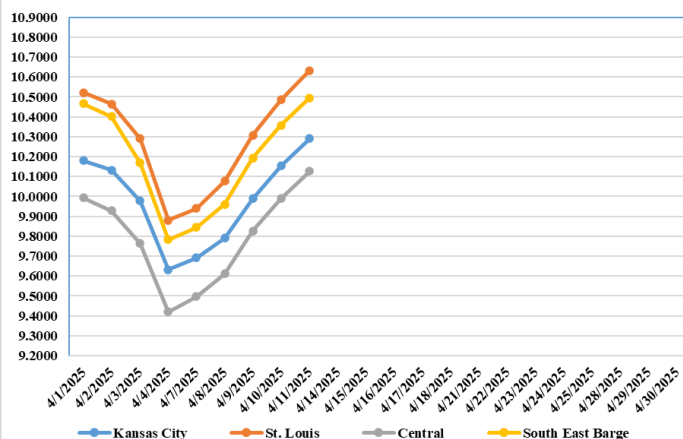
Compared to last week, Soybeans 0.66 to 0.76 higher, Wheat 0.28 to 0.37 higher, Corn 0.30 to 0.35 higher, Sorghum no trend due to lack of bids.

Area	#1 Soybeans	#2 Soft Wheat	#2 Corn	#2 Grain Sorghum
<b>Kansas City</b>				
Friday**	9.22-9.87	5.09	4.20-4.55	3.85
Monday	9.28-9.93	5.28	4.25-4.60	3.90
Tuesday	9.38-10.03	5.30	4.29-4.64	3.94
Wednesday	9.58-10.23	5.32	4.34-4.69	3.99
Thursday	9.74-10.39	5.28	4.43-4.83	4.08
Friday	9.88-10.53	5.46	4.50-4.90	4.15
<b>St. Louis</b>				
Friday**	9.87-9.89	5.19-5.23	4.78-4.82	—
Monday	9.93-9.95	5.28-5.32	4.83-4.87	—
Tuesday	10.08	5.30-5.35	4.87-4.91	—
Wednesday	10.30-10.32	5.32-5.37	4.93-4.96	—
Thursday	10.48-10.49	5.28-5.33	5.04-5.05	—
Friday	10.63-10.64	5.50-5.51	5.11-5.12	—
<b>Central</b>				
Friday**	9.32-9.47	4.99	4.30-4.35	—
Monday	9.43-9.53	5.08	4.35-4.40	—
Tuesday	9.53-9.68	5.10	4.39-4.44	—
Wednesday	9.73-9.88	5.12	4.44-4.49	—
Thursday	9.89-10.04	5.08	4.53-4.58	—
Friday	10.03-10.18	5.26	4.60-4.65	—
<b>S.E. MO</b>				
Friday**	9.72-9.84	—	4.70-4.78	—
Monday	9.78-9.90	—	4.75-4.83	—
Tuesday	9.88-10.06	—	4.79-4.87	—
Wednesday	10.08-10.33	—	4.84-4.92	—
Thursday	10.24-10.49	—	4.99-5.03	—
Friday	10.38-10.63	—	5.07-5.10	—

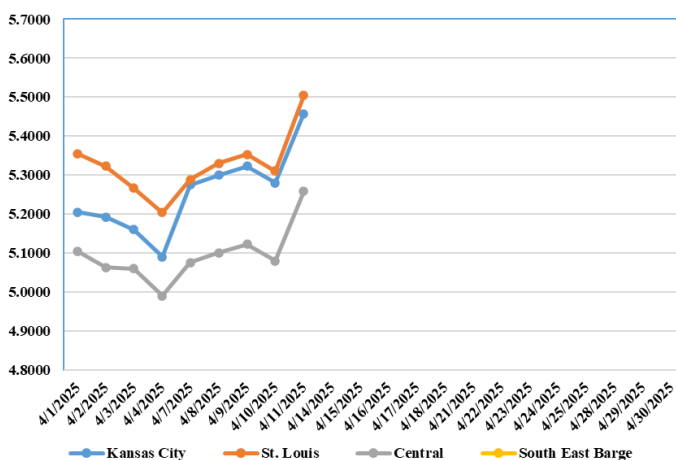
(PRICES PER BUSHEL) \*NEW CROP \*\*PREVIOUS WEEK'S PRICES  
\*Bids calculated using Kansas City, St. Louis, and St. Joseph bids

## MONTHLY GRAIN CROP

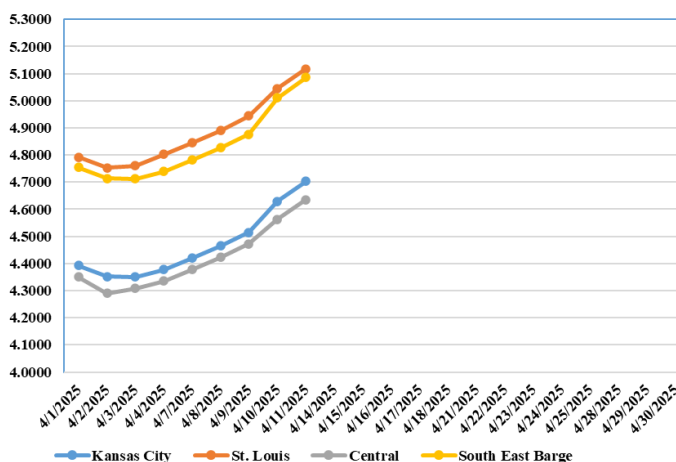
### April 2025 Soybean Bids



### April 2025 Wheat Bids



### April 2025 Corn Bids



\*Axis value ranges may be updated to reflect data points.  
Only dates in which markets are trading and only current cash bids are represented.

## WHOLESALE FEEDSTUFFS PRICES (DOLLARS PER TON-BULK BASIS)

Area	<u>Cottonseed Meal 41%</u>	<u>Soybean Meal 46.5-48%</u>	<u>Corn Gluten Pellets 21%</u>	<u>Wheat Middlings</u>
Kansas City	300.00	282.10	196.00	111.67
St. Louis	295.00	n/a	190.50	105.00



### MISSOURI CROP PROGRESS AND CONDITION

There were 2.3 days suitable for fieldwork in the week ending April 6, 2025. Statewide, the average temperature was 49.3 degrees, 0.7 degrees below normal. Precipitation averaged 3.83 inches, 3.11 inches above normal. Topsoil moisture supply was rated 1 percent very short, 8 percent short, 61 percent adequate, and 30 percent surplus. Subsoil moisture supply was rated 2 percent very short, 15 percent short, 67 percent adequate, and 16 percent surplus. Corn planted reached 6 percent, compared to the 5-year average of 3 percent. Soybeans planted reached 3 percent, compared to the 5-year average of 1 percent. Rice planted reached 2 percent, compared to the 5-year average of 3 percent. Winter wheat headed reached 2 percent, compared to the 5-year average of 1 percent. Winter wheat condition was rated 7 percent poor, 29 percent fair, 59 percent good, and 5 percent excellent.

	Week Ending			
	4/6/25	3/30/25	4/6/24	5 yr avg
Corn Planted	6	3	6	3
Soybeans Planted	3	2	3	1
Rice Planted	2	-	12	3
Winter wheat headed	2	-	2	1

### WORLD AG SUPPLY AND DEMAND ESTIMATES

**WHEAT:** This month's supply and demand outlook for 2024/25 U.S. wheat is for larger supplies, slightly smaller domestic use, reduced exports, and increased ending stocks. Supplies are raised on higher projected imports, up 10 million bushels to 150 million, with increases for Hard Red Spring (HRS), Durum, White, and Hard Red Winter (HRW). At this level, imports would be the largest since 2017/18. Domestic consumption is forecast 2 million bushels lower on reduced seed use, based primarily on the March NASS Prospective Plantings report. Feed and residual use is unchanged at 120 million bushels, but there are off-setting by-class revisions based on the March 31 NASS Grain Stocks report. Exports are lowered 15 million bushels to 820 million with reductions to HRS and HRW. Projected 2024/25 ending stocks are raised 27 million bushels to 846 million, 22 percent above the previous year. The season average farm price is unchanged at \$5.50 per bushel.

**COARSE GRAINS:** This month's 2024/25 U.S. corn outlook is for greater exports, reduced feed and residual use, and smaller ending stocks. Feed and residual use is cut 25 million bushels to 5.8 billion based on disappearance during the December-February quarter as indicated in the March 31 Grain Stocks report. Exports are raised 100 million bushels reflecting the pace of sales and shipments to date and relatively competitive U.S. prices. With no other use changes, ending stocks are down 75 million bushels from last month to 1.5 billion. The season-average corn price received by producers is unchanged at \$4.35 per bushel.

**OILSEEDS:** The outlook for U.S. soybean supply and use for 2024/25 includes higher imports and crush, and lower ending stocks. Soybean crush is raised 10 million bushels to 4.42 billion on higher soybean meal domestic use and soybean oil exports. Soybean oil exports are increased based on export commitments. Soybean oil for biofuel is lowered based on pace to date. However, stronger use is forecast for the last part of the marketing year due to tariffs impacting imports of other biofuel feed-stocks, like used cooking oil. With soybean exports unchanged and imports increased slightly, soybean ending stocks are lowered 5 million bushels to 375 million. The U.S. season-average soybean price for 2024/25 is forecast unchanged at \$9.95 per bushel. The soybean meal price is lowered \$10 to \$300 per short ton and the soybean oil price is raised 2 cents to 45 cents per pound.

### MISSOURI WEEKLY HAY SUMMARY 4/10/2025

Many producers that were in the direct line of last week's storms once again spent a fair amount of time this week cleaning up, fixing fences and water gaps. Those in areas that didn't receive extreme amounts are slowing finding some spots that they can get over and returning to field work along with spreading fertilizer on pastures and hay fields if they hadn't gotten it done earlier. Hay demand is light as feeding season draws to an end and the supply of hay is moderate. Hay prices are steady to weak. The Missouri Department of Agriculture has a hay directory at <https://apps.mda.mo.gov/haydirectory> or visit the University of Missouri Extension feed stuff finder at <https://feedstufffinder.org>  
Alfalfa - Supreme 250.00-300.00, small square 10.00-14.00 per bale  
Alfalfa - Premium 175.00-225.00  
Alfalfa - Good 150.00-175.00, small square 6.00-10.00 per bale  
Alfalfa - Fair 125.00-150.00  
Mixed grass - Good/Premium 125.00-200.00  
Mixed grass-Fair/Good 80.00-125.00, small square 3.50-8.00 per bale  
Mixed grass - Fair 25.00-50.00 per large round bale  
Wheat straw - 4.00-7.00 per small square bale  
Corn Stalks - 10.00-25.00 per large round bale

Please Note: The above volumes (tonnage, acres, and bales) listed are for confirmed trades only, it does not include estimated volume (tonnage) for bids or offers to the trade. List your hay for sale at: [Hay Listing Online Form](#). Explanation of Hay Quality Guidelines: [Hay Quality Designation Guidelines](#). Glossary of Terms: [Livestock, Poultry, & Grain Hay Terms](#)

### MISSOURI WEEKLY SHEEP/GOAT AUCTION SUMMARY

Receipts: 3,188 Week Ago: 1,183 Last Year: 605

**SHEEP:** Feeder lambs Small and Medium 1 hair 30 lbs 300.00. Small and Medium 1-2 hair 25-60 lbs 230.00-285.00, thin 182.00, replacements 300.00. Small and Medium 2 hair 40-55 lbs 225.00-235.00. Slaughter sheep/lambs Choice and Prime 1-3 w/s 70-85 lbs 255.00. Choice 1-3 w/s 170 lbs 125.00. Choice and Prime 1-3 hair 50-90 lbs 230.00-277.50; 100-110 lbs 170.00-210.00. Choice 1-2 hair 55-85 lbs 210.00-237.50. Choice 1-3 50-80 lbs 230.00-255.00. Slaughter ewes Utility and Good 1-2 80-175 lbs 100.00-110.00. Utility 1-2 100-190 lbs 80.00-90.00. Good 2-3 hair 80-140 lbs 115.00-130.00. Utility and Good 1-3 90-145 lbs 85.00-110.00/CWT; 80-125 lbs 90.00-115.00/hd. Bucks 1-2 hair 100-185 lbs 110.00-150.00. Replacement ewes Medium and Large 1-2 4-6 yrs 141 lbs exp 115.00/hd. Small and Medium 1-2 hair 1-2 yrs 70 lbs open 235.00/CWT; 4-6 yrs 110 lbs exp 125.00/CWT; 1-2 yrs 85 lbs exp 110.00-140.00/hd; 2-4 yrs 110-155 lbs exp 125.00-150.00/hd; 4-6 yrs 110-130 lbs exp 145.00-160.00/hd. Families Small and Medium 1-2 4-6 yrs 90-125 lbs exp 170.00-440.00/fam; >6 yrs 90-105 lbs exp 160.00-170.00/fam.

**GOATS:** Feeder kids Selection 1 35-50 lbs 345.00-370.00. Selection 1-2 30-40 lbs 300.00. Selection 2 30-50 lbs 250.00-350.00. Slaughter kids Selection 1 45-75 lbs 330.00-400.00. Selection 2 50-85 lbs 250.00-305.00. Selection 3 50-60 lbs 170.00-230.00. Slaughter nannies Selection 1-2 75-95 lbs 100.00-130.00/CWT; 105-155 lbs 115.00-165.00/CWT, thin 90.00-105.00/CWT; 75-110 lbs 100.00-165.00/hd. Slaughter bucks Selection 1-2 90-175 lbs 150.00-215.00. Wethers Selection 1-2 92 lbs 200.00. Replacement nannies Selection 1-2 1-2 yrs 90-100 lbs exp 180.00-210.00/hd; 4-6 yrs 66 lbs bred 165.00; 80-90 lbs exp 220.00-225.00. Families Selection 1-2 1-2 yrs 80-90 lbs exp 280.00-330.00/fam; 2-4 yrs 75-90 lbs exp with <20 lb kids 220.00-400.00/fam; >6 yrs 87 lbs exp with <20 lb kids 120.00/fam.

Explanatory Notes: Stage - Represents estimated lambing/kidding period (Open, Exp=exposed, Bred, Fall = Sep-Nov, Win = Dec-Feb, Spr = Mar-May, Sum=Jun-Aug; w/s = woolled and shorn; /hd= per head; /fam=per family  
All price CWT unless otherwise noted.

### MISSOURI DROUGHT MONITOR

Date	None	D0	D1	D2	D3	D4
4/8/25	63.04	33.83	3.13	0	0	0
4/1/25	28.08	48.48	20.76	2.68	0	0
4/9/24	32.27	35.59	26.14	6	0	0

Reflects percentage of Missouri impacted by drought. D0 Abnormally Dry; D1 Moderate Drought; D2 Severe Drought; D3 Extreme Drought; D4 Exceptional Drought

### NATIONAL DIRECT DELIVERED FEEDER PIG REPORT

4/11/25 Receipts: 57,924 Week ago: 113,295 Year Ago: 123,943  
Early weaned pigs 3.00 lower and feeder pigs no trade.  
Cash 30,250 head 33.00-55.00, weighted average 44.15  
Formula 27,674 head 43.23-56.29, weighted average 50.62  
Feeder pigs 40 pounds basis:  
No trade

### NATIONAL DAILY DIRECT PRIOR DAY HOG REPORTS 4/14/25

**BARROWS AND GILTS** (Carcass Basis): 2,351 head  
Base Carcass Price 78.00-86.00, weighted average 84.13

**SOWS (Live Basis):** 7,545 head  
300-500 lbs. 25.00-88.00  
Over 500 lbs. 54.05-88.00

### MISSOURI WEEKLY DIRECT SLAUGHTER CATTLE REPORT 4/11/25

Weekly Receipts: 160 Week ago: 400 Year ago: 280  
Trading as of Friday morning, flat dressed sales inactive as producers are passing lower bids. Grid dressed sales 7.00 lower.

**LIVE STEERS & HEIFERS:** DRESSED STEERS & HEIFERS:  
No sales reported No sales reported

**GRADE AND EIGHT (Grid):** 4 loads Fri morning 333.00

Click here for the current [National Crop Progress](#)  
Click here for the current [Missouri Crop Progress](#)  
The current hay directory can be found at: [Hay Directory](#).