

Weekly Market Summary

Published by:
Missouri Department of Agriculture
Ag Business Development Division
Market News Program



Chris Chinn, Director
Jill Wood, Division Director
Tony Hancock, Editor
<http://www.ams.usda.gov/marketnews.htm>
<http://www.ams.usda.gov/marketnews.htm>

Michael Kehoe, Governor

Volume XLV, Number 16 ♦ P.O. Box 630, Jefferson City, MO 65102 ♦ (573) 751-4211 ♦ Mon, Apr 21, 2025

MISSOURI WEEKLY FEEDER CATTLE WEIGHTED AVERAGE REPORT

Feeder Cattle Receipts: 30,498 Week ago: 13,496 Year ago: 26,683
Steers and Heifers Medium and Large 1—Weighted average weights and prices

STEERS: Medium and Large 1

282 lbs. 484.53	475 lbs. 410.90	668 lbs. 325.71	882 lbs. 276.20
334 lbs. 453.18	524 lbs. 381.61	725 lbs. 308.96	929 lbs. 268.77
375 lbs. 443.69	574 lbs. 360.53	779 lbs. 294.48	967 lbs. 258.97
427 lbs. 428.38	622 lbs. 344.03	829 lbs. 288.05	

HEIFERS: Medium and Large 1

283 lbs. 437.35	473 lbs. 358.92	684 lbs. 294.50	866 lbs. 252.11
327 lbs. 412.76	521 lbs. 336.83	725 lbs. 283.17	907 lbs. 243.78
370 lbs. 401.87	573 lbs. 322.06	771 lbs. 268.92	
426 lbs. 376.53	624 lbs. 303.14	826 lbs. 260.31	

MISSOURI STEER (HEIFER) STOCKER FORMULA 4/21/2025

Monday's Missouri Stocker formula consists of **6853 (6211)** head with a weighted average weight of **529.04 (516.92)** lbs. and a price value of **372.33 (332.63)**, 20.79 higher (13.14 higher) than a week ago.

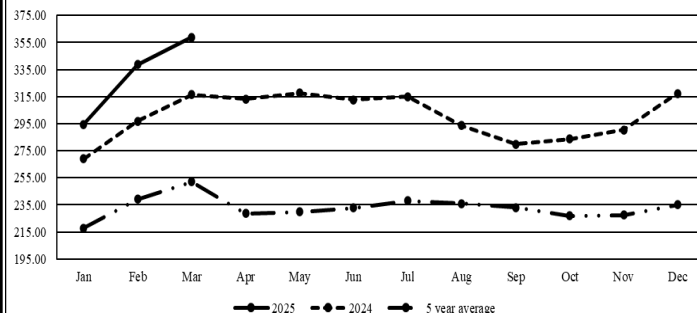
This a rolling seven day calculated weighted value which combines all Feeder Steers reported by MDA/USDA Market News Service weighing from 400-649 lbs. in the Medium and Large 1 and Medium and Large 1-2 frame and muscle classifications, including all comment cattle except Brahman X. Heifer values are in parentheses.

MISSOURI WEEKLY CATTLE AUCTION SUMMARY

Total Receipts: 37,330 Week Ago: 16,816 Year Ago: 35,524

Compared to the light test from last week, feeder steers and heifers sold 5.00 to 25.00 higher gaining back all of last week's losses and then some. Auctions barns shook of the uncertainty and volatility of the prior week and seemed to forget about factors outside of the fundamental factors directly related to supply and demand of cattle. The supply of feeders was moderate with several large drafts of yearlings being offered at various auctions this week as well as plenty of calves which is typical for this time of year. Demand was good to very good for all classes of cattle from grazing calves to fill the green grass pastures that are quickly growing to yearlings that could go multiple ways and even replacement heifers. The monthly cattle on feed report was released a day early this month due to Good Friday. Overall, on the surface the report was mostly neutral to perhaps an ever so slight touch bearishness but looking at the bigger picture of total numbers and several months of reports nothing negative to be found at this point. On feed was published at 98.4 percent, placements at 105.1 and marketings at 101.1 percent of a year ago. Being a quarterly report the break down of steers and heifers on feed was included and published with a percentage of 62:38 which still does not support any major retention or growth in breeding stock at this point. A few stick out sales this week included 31 head of 420 lb. steers at South Central Regional Stockyards which sold for 420.00. Callaway Livestock Center sold 53 head of 501 lb. fancy grazing steers for 440.00 as well as 120 head of 883 lb. steers for 280.75. Joplin Regional Stockyards sold 103 head of 619 lb. steers for 354.00 and 498 head of 841 lb. steers for 292.10. Mo-Kan Livestock Market sold 130 head of 939 lb. steers for 264.00. On the heifer side Callaway Livestock Center sold 67 head of 548 lb. heifers for 351.25. Lolli Brothers Livestock Market sold five loads of heifers from 714-743 lbs. all for 293.75. Boxed beef cutouts were mixed this week. Choice closed on Friday at 331.52, down 2.70 and Select closed at 315.55, up 1.59 compared to last Friday. Negotiated feedlot sales as of the Friday afternoon report totaled just over 64K head as of the 2:00 report cutoff time. Live prices were 4.00 to 7.00 higher and dressed sales were 5.00 to 12.00 higher. Live sales in the south were mostly 208.00-210.00 and 212.00-215.00 in the north with dressed sales in the north 332.00-340.00. The Missouri Stocker formula consists of 6853 head with a weighted average weight of 529.04 lbs. and a price value of 372.33, 20.79 higher than a week ago. The steer/heifer spread at 39.60.

Missouri Stocker Formula - Steers

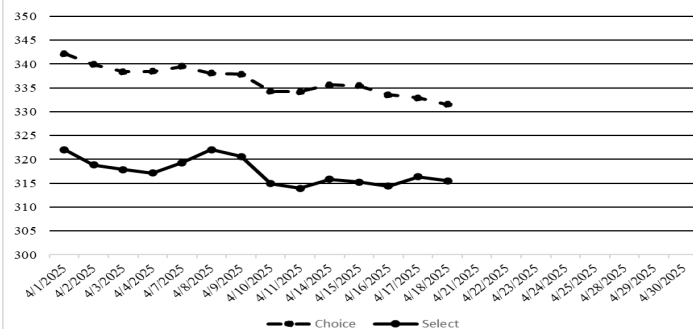


*Graph is updated the first Monday of each month. Axis value ranges may be updated to reflect data points.

NATIONAL BOXED BEEF CUTOUT VALUES

DATE	CHOICE	SELECT	TOTAL LOADS
04/14	335.63	315.85	81
04/15	335.43	315.24	147
04/16	333.53	314.39	135
04/17	332.90	316.39	143
04/18	331.52	315.55	101
5 Day Simple Average	333.80	315.48	

Boxed Beef Cuts April 2025



*Axis value ranges may be updated to reflect data points.

WEEKLY LIVESTOCK SLAUGHTER 4/19/25

	CATTLE	HOGS	SHEEP
Week to Date:	576,000	2,380,000	34,000
Last Week:	564,000	2,484,000	41,000
Last Year:	617,843	2,480,603	33,655

SOUTHWEST MISSOURI WEEKLY SUMMARY

(Joplin and Springfield)

Receipts: 11,534 Week ago: 5,220 Year Ago: 11,595
Compared to last week, steers and heifers mostly 5.00 to 15.00 higher, spots up to 25.00 to 30.00 higher. Slaughter cows steady to 5.00 higher. Slaughter bulls steady to 3.00 higher.

FEEDER STEERS:

Medium and Large 1

300-400 lbs.	440.00-475.00
400-500 lbs.	390.00-455.00
500-600 lbs.	340.00-412.50
600-700 lbs.	305.00-360.00
700-800 lbs.	278.00-332.50
800-900 lbs.	267.00-292.10
900-1000 lbs.	258.00-278.00

FEEDER HOLSTEIN STEERS

Large 3

Pkg 328 lbs.	210.00
Pkg 372 lbs.	280.00

BRED COWS: Medium and Large 1 2-4 yrs 1050-1170 lbs 2nd/3rd stage 2850.00-3000.00; 2-8 yrs 1040-1515 lbs 2nd/3rd stage 2300.00-3400.00, 1st stage 2350.00-2700.00; >8 yrs 1250-1413 lbs 2nd/3rd stage 2275.00-2500.00. Medium and Large 1-2 2-4 yrs 1090-1690 lbs 2nd/3rd stage 2600.00-4400.00; 2-8 yrs 930-1650 lbs 1st to 3rd stage 1975.00-2850.00; >5 yrs 940-1475 lbs 1st to 3rd stage 1600.00-2600.00 per head

FEEDER HEIFERS:

Medium and Large 1

300-400 lbs.	387.00-440.00
400-500 lbs.	340.00-410.00
500-600 lbs.	302.00-342.50
600-700 lbs.	267.50-327.00
700-800 lbs.	258.00-290.00
800-900 lbs.	250.00-255.00
900-1000 lbs.	213.00-244.00

SLAUGHTER COWS: Breaking and Boning (70-85% lean) 132.50-147.50; high dressing 145.00-163.00; low dressing 122.50-136.00. Lean (85-90%) 115.00-137.50.

SLAUGHTER BULLS: Yield Grade 1-2 1175-2195 lbs. 160.00-183.00; high dressing 180.00-208.00; low dressing 153.00-160.00

COW & CALF PAIRS: Medium and Large 1 2-8 yrs 1110-1735 lbs some rebred 1st stage with 150 to >300 lb calves 3100.00-3875.00. Medium and Large 1-2 2-8 yrs 970-1400 lbs with <150 to 300 lb calves 2650.00-4400.00; 2-8 yrs 1000-1300 lbs rebred 1st to 3rd stage with 150-300 lb calves 2900.00-4000.00 per pair

SOUTH CENTRAL MISSOURI WEEKLY SUMMARY

(West Plains, Phillipsburg)

Receipts: 4,299 Week ago: 1,350 Year Ago: 3,228
Compared to last week, steers and heifers under 700 lbs 2.00 to 15.00 higher, over 700 lbs higher undertone. Slaughter cows uneven from 2.00 lower to 4.00 higher. Slaughter bulls steady to 4.00 higher.

FEEDER STEERS:

Medium and Large 1

300-400 lbs.	425.00-480.00
400-500 lbs.	377.50-447.50
500-600 lbs.	340.00-395.00
600-700 lbs.	302.50-355.00
700-800 lbs.	280.50-320.00
800-900 lbs.	256.00-281.50

FEEDER HOLSTEIN STEERS:

Large 3

11 hd 430 lbs.	260.00
Pkg 558 lbs.	202.50

BRED COWS: Medium and Large 1 2-8 yrs 1077-1230 lbs 2nd/3rd stage 2750.00-3425.00. Medium and Large 1-2 2-8 yrs 1015-1525 lbs 2nd/3rd stage 1550.00-2900.00, 1st stage 1625.00-1700.00 per head

BRED HEIFERS: Medium and Large 1-2 <2 yrs 925-1075 lbs 1st to 3rd stage 2000.00-2400.00 per head

SLAUGHTER COWS: Breaking and Boning (70-85% lean) 134.50-149.00, high dressing 146.00-166.00; low dressing 119.00-137.00. Lean (85-90%) 117.00-135.00

SLAUGHTER BULLS: Yield Grade 1-2 1220-2270 lbs. 162.00-177.00; high dressing 178.00-205.00; low dressing 131.00-161.00.

COW & CALF PAIRS: Medium and Large 1 2-8 yrs 1371 lbs with 150-300 lb calves 3650.00. Medium and Large 1-2 2-8 yrs 1085-1172 lbs with <150 to 300 lb calves 2600.00-2850.00 per head

WEST CENTRAL MISSOURI WEEKLY SUMMARY

(Kingsville, Windsor, Butler)

Receipts: 5,819 Week ago: 3,531 Year ago: 5,486
Compared to last week, steer and heifer calves 10.00 to 30.00 higher, yearlings steady to 5.00 higher. Slaughter cows steady to 5.00 higher.

FEEDER STEERS:

Medium and Large 1

300-400 lbs.	406.00-483.00
400-500 lbs.	389.00-455.00
500-600 lbs.	348.00-409.00
600-700 lbs.	320.00-362.50
700-800 lbs.	283.50-324.00
800-900 lbs.	275.00-294.00

SLAUGHTER BULLS: Yield Grade 1-2 1140-2095 lbs. 168.00-188.00; high dressing 194-205.00; low dressing 149.00-159.00

BRED COWS: Scarce

FEEDER HEIFERS:

Medium and Large 1

300-400 lbs.	368.00-432.00
400-500 lbs.	354.00-414.00
500-600 lbs.	312.00-358.00
600-700 lbs.	279.00-322.50
700-800 lbs.	246.00-296.00
800-900 lbs.	234.00-276.00

SLAUGHTER COWS: Breaking and Boning (70-85% lean) 135.00-156.00, high dressing 149.00-158.00. Lean (85-90%) 114.00-132.00.

COW & CALF PAIRS: Scarce

NORTHEAST MISSOURI WEEKLY SUMMARY

(Bowling Green, Kingdom City, Palmyra)

Receipts: 5,222 Week ago: 3,717 Year ago: 4,381
Compared to last week, steers under 600 lbs mostly 10.00 to 20.00 higher, 600 lbs sharply higher undertone, over 800 lbs firm to higher undertone. Heifers under 600 lbs 10.00 to 15.00 higher, over 600 lbs higher undertone. Slaughter cows steady to 5.00 higher.

FEEDER STEERS:

Medium and Large 1

300-400 lbs.	406.00-485.00
400-500 lbs.	387.50-450.00
500-600 lbs.	351.00-411.00
600-650 lbs.	312.00-367.00
800-900 lbs.	277.60-297.00
900-1000 lbs.	257.85-276.50

SLAUGHTER BULLS: Yield Grade 1-2 1350-2340 lbs. 164.00-189.00; high dressing 182.00-215.00; low dressing 157.00-170.00.

SLAUGHTER STEERS: Choice and Prime 2-4 214.00-215.00. Choice 2-3 205.00-212.00. Select and Choice 2-3 203.00.

BRED COWS: Medium and Large 1 2-8 yrs 1282-1443 lbs 2nd/3rd stage 3125.00-3725.00. Medium and Large 1-2 2-8 yrs 1092-1355 lbs 2nd/3rd stage 2300.00-2850.00 per head

FEEDER HEIFERS:

Medium and Large 1

300-400 lbs.	372.50-415.00
400-500 lbs.	335.00-405.00
500-600 lbs.	319.00-352.00
600-700 lbs.	283.00-326.00
800-900 lbs.	250.50-255.00

SLAUGHTER COWS: Breaking and Boning, (70-85% lean) 132.00-150.00; high dressing 144.00-161.00; low dressing 120.00-134.00. Lean (85-90%) 121.00-135.00.

SLAUGHTER HEIFERS: Choice and Prime 2-4 213.00-129.00. Choice 2-3 206.00-209.00.

COW CALF PAIRS: Medium and Large 1-2 >5 yrs 1100-1300 lbs with 150-300 lb calves 2800.00-2850.00 per pair

NORTH CENTRAL MISSOURI WEEKLY SUMMARY

(Macon, Unionville, Green City, New Cambria)

Receipts: 4,292 Week ago: 466 Year ago: 5,527
Compared to two weeks ago, steers and heifers sold either side of steady, spots sharply higher on calves. Slaughter cows steady to 5.00 higher.

*Some sale barns on a bi-weekly schedule and may not have a sale each week.

FEEDER STEERS:

Medium and Large 1

400-500 lbs.	393.00-449.00
500-600 lbs.	331.00-405.50
600-700 lbs.	310.00-359.00
700-800 lbs.	300.00-315.75
Pkg 835 lbs.	279.00

SLAUGHTER BULLS: Yield Grade 1-2 1495-2085 lbs. 170.00-194.00.

BRED COWS: Medium and Large 1 2-4 yrs 1150-1190 lbs 2nd stage 3410.00. Medium and Large 1-2 2-4 yrs 1085-1250 lbs 2nd/3rd stage 2985.00-3200.00 per head

FEEDER HEIFERS:

Medium and Large 1

300-400 lbs.	370.00-401.00
400-500 lbs.	338.00-383.00
500-600 lbs.	311.00-379.00
600-700 lbs.	275.00-307.00
700-800 lbs.	274.00-293.75

SLAUGHTER COWS: Breaking and Boning (70-85% lean) 141.00-153.00, high dressing 149.00-165.00. Lean (85-90%) 122.00-134.00

HEIFER PAIRS: Medium and Large 1 2-4 yrs 1375-1385 lbs with <150 to 300 lb calves 4485.00-4550.00 per pair

SOUTHEAST MISSOURI WEEKLY SUMMARY

(Jackson and Farmington)

Receipts: 2,026 Week ago: 708 Year ago: 1,710
Compared to last week, steers and heifers 2.00 to 25.00 higher. Slaughter cows and bulls 1.00 to 4.00 higher.

FEEDER STEERS: Medium and Large 1

300-400 lbs. 390.00-450.00
400-500 lbs. 380.00-440.00
500-600 lbs. 325.00-377.00
600-700 lbs. 278.00-335.00
700-800 lbs. 245.00-295.00
800-850 lbs. 259.00-275.00

FEEDER HEIFERS: Medium and Large 1

300-400 lbs. 340.00-430.00
400-500 lbs. 322.00-395.00
500-600 lbs. 280.00-360.00
600-700 lbs. 260.00-300.00
700-800 lbs. 230.00-267.00
800-900 lbs. 240.00-250.00

SLAUGHTER BULLS: Yield
Grade 1-2 1110-1970 lbs 134.50-
156.00, high dressing 152.00-
189.00.

SLAUGHTER COWS: Breaking
and Boning (75-85% lean) 123.00-
131.00; high dressing 134.50-
155.00. Lean (85-90% lean) 87.00-
112.00

BRED COWS: Medium and Large
2 2-8 yrs 1060-1490 lbs 2nd/3rd
stage 1950.00-2950.00; >8 yrs
1075-1390 lbs 2nd/3rd stage
1700.00-2300.00 per head

COW & CALF PAIRS: Medium
and Large 2 2-8 yrs 1000-1350 lbs
with baby to >300 lb calves
2450.00-3100.00 per pair

EAST CENTRAL MISSOURI WEEKLY SUMMARY

(Cuba, Vienna)

Receipts: 2,805 Week Ago: 723 Year ago: 1,720
Compared to last week, steers and heifers under 600 lbs 10.00 to 20.00
higher, over 600 lbs steady to 5.00 higher. Slaughter cows 4.00 to 6.00
higher.

FEEDER STEERS: Medium and Large 1

300-400 lbs. 418.00-472.50
400-500 lbs. 370.00-457.00
500-600 lbs. 340.00-394.00
600-700 lbs. 310.00-347.50
700-750 lbs. 290.00-319.00
800-850 lbs. 282.50-289.50

FEEDER HEIFERS: Medium and Large 1

300-400 lbs. 370.00-417.50
400-500 lbs. 333.00-390.00
500-600 lbs. 302.50-351.00
600-700 lbs. 276.00-311.50
750-800 lbs. 242.00-260.50
850-900 lbs. 230.00-248.00

SLAUGHTER BULLS: Yield
Grade 1-2 1300-2490 lbs 164.00
-183.00; high dressing 182.00-
184.50; low dressing 120.00-
160.00

SLAUGHTER COWS: Breaking
and Boning, (70-85% lean) 134.50-
149.00; high dressing 148.50-
159.00. Lean (85-90%) 115.00-
139.00.

BRED COWS: Medium and
Large 1-2 2-8 yrs 960-1450 lbs
1st to 3rd stage 1950.00-2550.00,
>5 yrs 1190-1355 lbs 2nd stage
1925.00-2125.00 per head

COW & CALF PAIRS: Medium
and Large 1-2 2-8 yrs 1060 lbs
with <150 lb calves 2700.00; >8
yrs 1075 lbs with 150-300 lb calves
2425.00 per pair

NORTHWEST MISSOURI WEEKLY SUMMARY

(Tina)

Receipts: 1,333 Week Ago: 1,101 Year Ago: 1,877
Compared to last week, steers and heifers mostly steady to 10.00 high-
er. Slaughter cows and bulls steady.

FEEDER STEERS: Medium and Large 1

300-400 lbs. 420.00-445.00
400-500 lbs. 392.00-414.00
500-600 lbs. 341.50-397.50
600-700 lbs. 319.00-343.00

FEEDER HEIFERS: Medium and Large 1

300-400 lbs. 400.00-419.00
400-500 lbs. 345.00-385.00
500-600 lbs. 304.00-341.00
650-700 lbs. 278.00-285.00

SLAUGHTER BULLS:
Yield Grade 1-2 1060-1960 lbs
163.00-179.50; high dressing
185.00-188.50; low dressing
150.00-158.00.

SLAUGHTER COWS: Breaking
and Boning, (70-85% lean) 128.00-
145.50; high dressing 143.50-
156.00. Lean (85-90%) 119.00-
143.00

BRED COWS: Medium and
Large 1-2 2-8 yrs 1300-1400 lbs
2nd/3rd stage 1975.00-2350.00
per head

BRED HEIFERS: Medium and
Large 1-2 <2 yrs 1039 lbs 1st/2nd
stage 2600.00 per head

AFTERNOON NATIONAL SLAUGHTER CATTLE REVIEW

So far for Friday in the Western Cornbelt, negotiated cash trade has been limited on light demand. Negotiated cash trade in all other regions has been mostly inactive on very light demand. The last reported market in all regions was on Thursday. In the Texas Panhandle, live FPB purchases traded from 208.00-210.00. In Kansas, live FOB purchases traded at 210.00. In Nebraska, live FOB purchases traded from 212.00-214.00 and dressed delivered purchases traded from 332.00-340.00. In the Western Cornbelt, live FOB purchases traded from 212.00-215.00 and dressed delivered purchases at 335.00.

Negotiated Cash Sales:

Confirmed:	3,017	Week Ago:	5,623	Year Ago:	5,527
Week to date:	64,381	Week Ago:	48,790	Year Ago:	48,547

<u>Live Basis</u>	<u>Steers</u>	<u>Heifers</u>
Over 80% Choice	212.00-214.00, avg 212.11	212.00
65-80% Choice	-	-
35-65% Choice	-	-
0-35% Choice	-	-
Total All Grades	212.00-214.00, avg 212.11	212.00
<u>Dressed Basis</u>		
Over 80% Choice	335.00	335.00
65-80% Choice	-	-
35-65% Choice	-	-
0-35% Choice	-	-
Total All Grades	335.00	-

<u>All Beef Type</u> <u>Steers/Heifers</u>	<u>Head</u>	<u>Avg Wt</u>	<u>Price Range</u>	<u>Wtd Avg</u>
Live FOB	2,307	1470.6	208.00-214.00	211.94
Live Del	375	1502.1	205.00-215.00	213.53
Dressed Del	295	947.5	335.00	335.00
Dressed FOB	-	-	-	-

WEEKLY COMMODITY FUTURES TRENDS

Compared to last week, Live Cattle 3.35 to 7.35 higher, Lean Hogs 3.55 to 4.70 higher, Feeder Cattle 5.62 to 8.18 higher.

Daily Futures Closes

	Mon.	Tues.	Wed.	Thu.	Fri.
Cattle					
Apr	203.95	204.80	207.07	209.82	Holiday
Jun	199.07	199.80	202.07	204.07	
Aug	195.82	196.85	198.95	200.12	
Oct	195.07	196.17	197.57	198.32	
Dec	196.42	197.35	198.35	198.82	
Lean Hogs					
Apr	85.47	—	—	—	Holiday
May	87.95	88.20	90.15	90.40	
Jun	95.12	95.17	97.95	98.02	
Jul	95.50	95.47	97.90	98.10	
Aug	93.72	93.92	96.27	96.45	
Fdr Cattle					
Apr	288.05	289.37	289.95	293.35	Holiday
May	280.95	282.52	284.40	286.85	
Aug	286.15	288.25	289.45	290.87	
Sep	285.42	287.47	288.62	289.57	
Oct	283.87	285.75	286.77	287.42	
Milk					
Apr	17.25	17.29	17.28	17.37	Holiday
May	17.64	18.08	17.91	18.30	
Jun	17.23	17.50	17.19	17.43	

WEEKLY COMMODITY GRAIN FUTURES TRENDS

Compared to last week, Soybeans nearby 0.01 to 0.06 lower, others 0.04 to 0.07 higher, Wheat 0.07 to 0.08 lower, Corn nearby 0.07 to 0.08 lower, others 0.02 to 0.03 higher, KC Wheat 0.11 to 0.13 lower, Soybeans Meal 0.60 to 4.00 lower.

Daily Grain Futures Closes

	Mon.	Tues.	Wed.	Thu.	Fri.
Soybeans					
May	1041 3/4	1036	1038 3/4	1036 1/2	Holiday
Jul	1050 1/2	1046 1/2	1050 1/4	1047 3/4	
Aug	1044	1042	1046 3/4	1044 3/4	
Sep	1025 1/2	1025 1/2	1030 3/4	1028 1/2	
Nov	1028 1/2	1029 3/4	1034 1/4	1032 1/2	
Wheat					
May	547 1/2	542	547 3/4	548 3/4	Holiday
Jul	561 3/4	556	561	562 1/4	
Sep	576 1/2	570 1/4	575	576 1/2	
Dec	599 1/4	592 3/4	596	598	
Mar	618 1/4	611 3/4	614	616 1/4	
Corn					
May	485	481 1/4	484 1/4	482 1/4	Holiday
Jul	492 3/4	489 1/2	491 3/4	490 1/4	
Sep	455 1/4	456 1/4	459	458 1/2	
Dec	462	464 1/4	466 3/4	466	
Mar	474	476 1/4	478 3/4	478 1/4	
KC Wheat					
May	555 1/4	553	558	557 1/2	Holiday
Jul	570 1/4	568 1/2	572 1/4	570	
Sep	585 3/4	584	587 1/2	585	
Dec	610	608 1/4	611 1/4	608 1/4	
Mar	629 1/4	627 1/4	630	627 1/4	
SB Meal					
May	297.10	294.20	296.70	295.60	Holiday
Jul	303.40	301.00	304.20	303.10	
Aug	304.80	320.70	306.00	305.00	
Sep	305.60	303.70	307.00	306.20	
Oct	305.70	304.20	307.20	306.40	

MISSOURI GRAIN WEEKLY TRENDS

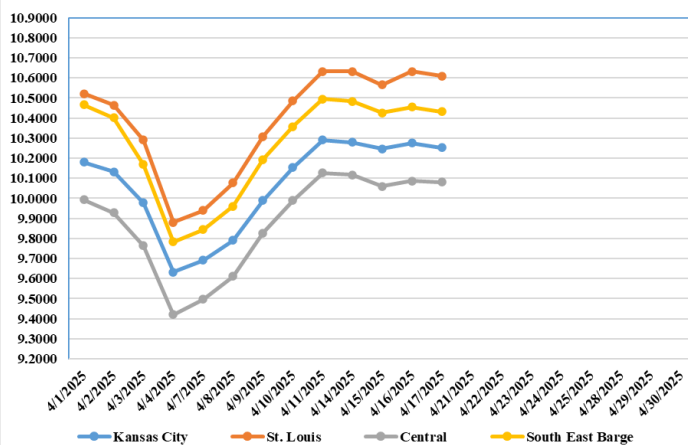
Compared to last week, Soybeans 0.06 lower to 0.04 higher, Wheat 0.07 lower, Corn 0.05 to 0.08 lower, Sorghum no trend due to lack of bids.

Area	#1 Soybeans	#2 Soft Wheat	#2 Corn	#2 Grain Sorghum
<u>Kansas City</u>				
Friday**	9.88-10.53	5.46	4.50-4.90	4.15
Monday	9.87-10.52	5.38	4.45-4.85	4.10
Tuesday	9.81-10.56	5.32	4.41-4.81	4.06
Wednesday	9.84-10.59	5.38	4.44-4.86	4.09
Thursday	9.82-10.57	5.39	4.42-4.84	4.07
Friday	Holiday			
<u>St. Louis</u>				
Friday**	10.63-10.64	5.50-5.51	5.11-5.12	—
Monday	10.63-10.64	5.42-5.43	5.06-5.07	—
Tuesday	10.56-10.57	5.36-5.37	5.02-5.03	—
Wednesday	10.63-10.64	5.42-5.43	5.06-5.07	—
Thursday	10.61-10.62	5.43-5.44	5.04-5.07	—
Friday	Holiday			
<u>Central</u>				
Friday**	10.03-10.18	5.26	4.60-4.65	—
Monday	10.02-10.17	5.18	4.55-4.60	—
Tuesday	9.96-10.11	5.12	4.51-4.56	—
Wednesday	9.99-10.14	5.18	4.54-4.59	—
Thursday	9.97-10.17	5.19	4.52-4.57	—
Friday	Holiday			
<u>S.E. MO</u>				
Friday**	10.38-10.63	—	5.07-5.10	—
Monday	10.37-10.62	—	5.01-5.05	—
Tuesday	10.31-10.56	—	4.97-5.01	—
Wednesday	10.34-10.59	—	5.00-5.04	—
Thursday	10.32-10.57	—	4.98-5.02	—
Friday	Holiday	—	—	—

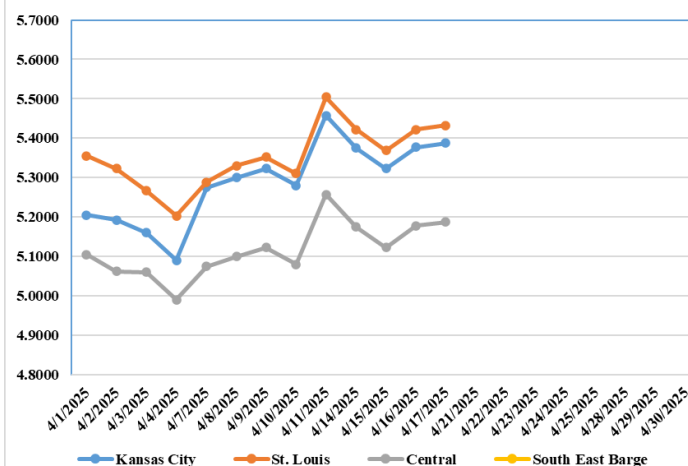
(PRICES PER BUSHEL) *NEW CROP **PREVIOUS WEEK'S PRICES
*Bids calculated using Kansas City, St. Louis, and St. Joseph bids

MONTHLY GRAIN CROP

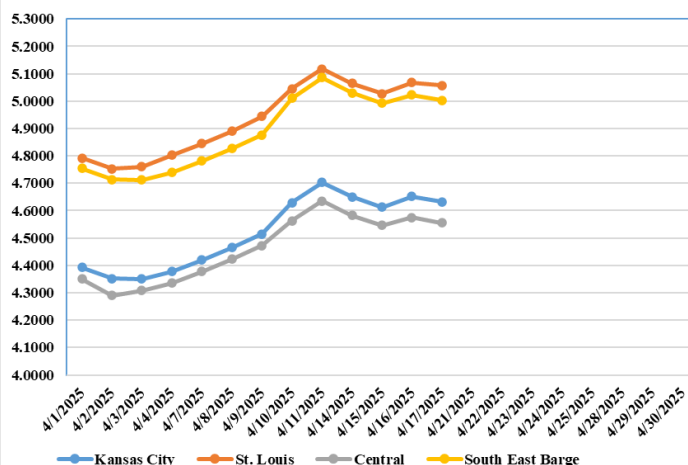
April 2025 Soybean Bids



April 2025 Wheat Bids



April 2025 Corn Bids



*Axis value ranges may be updated to reflect data points.
Only dates in which markets are trading and only current cash bids are represented.

WHOLESALE FEEDSTUFFS PRICES (DOLLARS PER TON-BULK BASIS)

Area	<u>Cottonseed Meal 41%</u>	<u>Soybean Meal 46.5-48%</u>	<u>Corn Gluten Pellets 21%</u>	<u>Wheat Middlings</u>
Kansas City	300.00	279.20	196.00	111.67
St. Louis	295.00	n/a	190.50	102.50

MISSOURI CROP PROGRESS AND CONDITION 4/14/25

There were 3.8 days suitable for fieldwork in the week ending April 13, 2025. Statewide, the average temperature was 52.2 degrees, 0.8 degrees below normal. Precipitation averaged 0.07 inches, 0.91 inches below normal. Topsoil moisture supply was rated 1 percent very short, 9 percent short, 73 percent adequate, and 17 percent surplus. Subsoil moisture supply was rated 3 percent very short, 14 percent short, 70 percent adequate, and 13 percent surplus. Corn planted reached 9 percent, compared to the 5-year average of 12 percent. Corn emerged reached 1 percent, equal to the 5-year average. Soybeans planted reached 5 percent, compared to the 5-year average of 2 percent. Cotton planted reached 1 percent. Rice planted reached 6 percent, compared to the 5-year average of 13 percent. Winter wheat headed reached 9 percent, compared to the 5-year average of 2 percent. Winter wheat condition was rated 5 percent poor, 26 percent fair, 63 percent good, and 6 percent excellent.

	Week Ending			5 yr avg
	4/13/25	4/6/25	4/13/24	
Corn Planted	9	6	23	12
Corn Emerged	1	-	1	1
Soybeans Planted	5	3	7	2
Cotton Planted	1	-	2	-
Rice Planted	6	2	32	13
Winter wheat headed	9	2	5	2

CATTLE ON FEED

Cattle and calves on feed for the slaughter market in the United States for feedlots with capacity of 1,000 or more head totaled 11.6 million head on April 1, 2025. The inventory was 2 percent below April 1, 2024. The inventory included 7.26 million steers and steer calves, down slightly from the previous year. This group accounted for 62 percent of the total inventory. Heifers and heifer calves accounted for 4.38 million head, down 4 percent from 2024.

Placements in feedlots during March totaled 1.84 million head, 5 percent above 2024. Net placements were 1.79 million head. During March, placements of cattle and calves weighing less than 600 pounds were 335,000 head, 600-699 pounds were 285,000 head, 700-799 pounds were 475,000 head, 800-899 pounds were 506,000 head, 900-999 pounds were 175,000 head, and 1,000 pounds and greater were 65,000 head.

Marketings of fed cattle during March totaled 1.73 million head, 1 percent above 2024.

Other disappearance totaled 55,000 head during March, 4 percent below 2024.

MISSOURI WEEKLY HAY SUMMARY 4/17/2025

Producers were back in the fields planting and finishing up fertilizer application early week. Rains later in week and forecast for a few days likely to slow activity, however. As of the start of this week corn and bean planting still both under 10 percent complete as weather just hasn't been very cooperative so far. Pasture conditions are mostly in the fair to good rating. There is a good section of dryness that is somewhat concerning this early in the year which includes a strip of the state from the Southwest to Northeast corners of the state. So far, no reports of anyone cutting and wrapping any hay but that should get underway soon. Hay prices are steady to weak, supply and demand are light to moderate. The Missouri Department of Agriculture has a hay directory at <https://apps.mda.mo.gov/haydirectory> or visit the University of Missouri Extension feed stuff finder at <https://feedstufffinder.org>

Alfalfa - Supreme 250.00-300.00, small square 10.00-14.00 per bale
Alfalfa - Premium 175.00-225.00
Alfalfa - Good 150.00-175.00, small square 6.00-10.00 per bale
Alfalfa - Fair 125.00-150.00
Mixed grass - Good/Premium 125.00-200.00
Mixed grass-Fair/Good 80.00-125.00, small square 3.50-8.00 per bale
Mixed grass - Fair 25.00-50.00 per large round bale
Wheat straw - 4.00-7.00 per small square bale
Corn Stalks - 10.00-25.00 per large round bale

Please Note: The above volumes (tonnage, acres, and bales) listed are for confirmed trades only, it does not include estimated volume (tonnage) for bids or offers to the trade. List your hay for sale at: [Hay Listing Online Form](#). Explanation of Hay Quality Guidelines: [Hay Quality Designation Guidelines](#). Glossary of Terms: [Livestock, Poultry, & Grain Hay Terms](#)

MISSOURI WEEKLY SHEEP/GOAT AUCTION SUMMARY

Receipts: 1,877 Week Ago: 3,188 Last Year: 1,777

SHEEP: Feeder lambs Medium and Large 1-2 20-30 lbs 225.00-350.00; 30-50 lbs 200.00-275.00. Small and Medium 1-2 hair 20-50 lbs 240.00-285.00, thin 210.00-222.50.

Slaughter lambs Choice and Prime 1-3 w/s pkg 59 lbs 245.00; 60-70 lbs 262.50-275.00. Choice 1-3 w/s 100-105 lbs 135.00-162.50. Choice and Prime 1-2 woolled 45 lbs 225.00-237.00, 50-80 lbs 240.00-265.00 pkg 80 lbs 230.00. Choice and Prime 1-2 hair 40-50 lbs 220.00-235.00; 50-70 lbs 215.00-275.00; 70-85 lbs 200.00-250.00. Choice and Prime 1-3 hair 50-80 lbs 240.00-290.00. Choice 1-3 hair 50-70 lbs 240.00-250.00; 70-80 lbs 220.00-227.50. Good 1-2 hair 60-70 lbs 205.00. Slaughter ewes Utility and Good 2 100-200 lbs 100.00-132.00. Utility and Good 2-3 80-150 lbs 60.00-100.00. Good2-3 hair 100-155 lbs 107.50-125.00. Utility and Good 1-3 hair 95-175 lbs 97.50-115.00. Slaughter bucks 1-2 80-120 lbs 80.00-135.00. Bucks 1-2 hair 110-145 lbs 110.00-150.00.

Replacement ewes Medium and Large 1-2 2-4 yrs exp/sum 70-170 lbs 125.00. Medium and Large 2 2-4 yrs 182 lbs exp 142.00. Small and Medium 1-2 hair 1-2 yrs 75-90 lbs exp 162.50-205.00; 2-4 yrs 70-100 lbs exp 145.00-165.00, 100-130 lbs 147.50-180.00; 4-6 yrs 70-120 lbs exp 125.00-137.50.

Families Medium and Large 2 2-4 yrs 80-90 lbs fwith <20 lb lambs 210.00-230.00/fam. Small and Medium 1-2 2-4 yrs 80-100 lbs exp with <20 lb lambs 200.00-360.00/fam; 4-6 yrs 90-100 lbs exp with <200 to 40 lb lambs 220.00-280.00/fam.

GOATS: Feeder kids Selection 1 30-50 lbs 350.00-440.00. Selection 1-2 20-40 lbs 200.00-250.00. Selection 2 20-50 lbs 205.00-340.00. Selection 3 20-35 lbs 170.00-235.00, pygmies 38 lbs 140.00.

Slaughter kids Selection 1 45-80 lbs 252.50-425.00. Selection 1-2 45-85 lbs 225.00-255.00. Selection 2 50-65 lbs 257.50-332.50. Selection 3 50-60 lbs 240.00-245.00.

Slaughter nannies Selection 1-2 60-145 lbs 110.00-165.00.

Slaughter bucks Selection 1-2 100-145 lbs 150.00-220.00; 150-235 lbs 185.00-300.00 Wether kids Selection 1 50-70 lbs 375.00-397.50.

Replacement nannies Selection 1-2 1-2 yrs 60-70 lbs exp 217.50-265.00; 2-4 yrs 80-135 lbs exp 135.00-230.00. **Families** Selection 1-2 70-80 lbs exp with <20 lb kids 195.00-420.00/fam; 2-4 yrs 110 lbs with 20-40 lb kids 140.00/fam.

Explanatory Notes: Stage - Represents estimated lambing/kidding period (Open, Exp=exposed, Bred, Fall = Sep-Nov, Win = Dec-Feb, Spr = Mar-May, Sum=Jun-Aug; w/s = woolled and shorn; /hd= per head; /fam=per family
All price CWT unless otherwise noted.

MISSOURI DROUGHT MONITOR

Date	None	D0	D1	D2	D3	D4
4/15/25	61.49	32.55	5.96	0	0	0
4/8/25	63.04	33.83	3.13	0	0	0
4/16/24	30.37	36.01	32.03	1.59	0	0

Reflects percentage of Missouri impacted by drought. D0 Abnormally Dry; D1 Moderate Drought; D2 Severe Drought; D3 Extreme Drought; D4 Exceptional Drought

NATIONAL DIRECT DELIVERED FEEDER PIG REPORT

4/18/25 Receipts: 125,609 Week ago: 57,924 Year Ago: 103,846

Early weaned pigs steady to 2.00 lower and feeder pigs no comparison.

Cash 60,035 head 33.00-52.00, weighted average 41.68

Formula 40,494 head 38.86-55.97, weighted average 48.47

Feeder pigs 40 pounds basis: Cash 25,080 head 75.00-96.00, weighted average 82.81

NATIONAL DAILY DIRECT PRIOR DAY HOG REPORTS 4/21/25

BARROWS AND GILTS (Carcass Basis): 2,301 head
Base Carcass Price 77.00-87.00, weighted average 83.57

SOWS (Live Basis): 3,976 head
300-500 lbs. 25.00-88.00
Over 500 lbs. 50.30-70.15

MISSOURI WEEKLY DIRECT SLAUGHTER CATTLE REPORT 4/18/25

Weekly Receipts: 240 Week ago: 160 Year ago: 280

Trading as of Friday morning, flat dressed sales higher undertone with no bids from last week. Grid dressed sales inactive.

LIVE STEERS & HEIFERS: No sales reported
DRESSED STEERS & HEIFERS: 4 loads flat Thu 335.00; 1 loads flat Fri morning 335.00

GRADE AND EIGHT (Grid): No sales reported

Click here for the current [National Crop Progress](#)

Click here for the current [Missouri Crop Progress](#)

The current hay directory can be found at: [Hay Directory](#).