

Weekly Market Summary

Published by:
Missouri Department of Agriculture
Ag Business Development Division
Market News Program



Chris Chinn, Director
Jill Wood, Division Director
Tony Hancock, Editor
<http://www.ams.usda.gov/marketnews.htm>
<http://www.ams.usda.gov/marketnews.htm>

Michael Kehoe, Governor

Volume XLV, Number 17 ♦ P.O. Box 630, Jefferson City, MO 65102 ♦ (573) 751-4211 ♦ Mon, Apr 28, 2025

MISSOURI WEEKLY FEEDER CATTLE WEIGHTED AVERAGE REPORT

Feeder Cattle Receipts: 17,876 Week ago: 30,498 Year ago: 25,967
Steers and Heifers Medium and Large 1—Weighted average weights and prices

STEERS: Medium and Large 1

283 lbs.	520.97	472 lbs.	410.49	675 lbs.	330.13	873 lbs.	277.80
323 lbs.	471.96	527 lbs.	387.62	730 lbs.	312.40	923 lbs.	274.37
380 lbs.	450.21	571 lbs.	370.80	776 lbs.	299.35	959 lbs.	265.84
425 lbs.	438.57	623 lbs.	350.08	827 lbs.	287.43	1058 lbs.	236.56

HEIFERS: Medium and Large 1

282 lbs.	448.56	473 lbs.	366.12	682 lbs.	290.03	860 lbs.	247.16
327 lbs.	423.12	522 lbs.	344.31	717 lbs.	287.01	922 lbs.	247.50
374 lbs.	407.80	569 lbs.	324.87	773 lbs.	283.26	968 lbs.	231.71
424 lbs.	392.31	616 lbs.	308.91	811 lbs.	264.42		

MISSOURI STEER (HEIFER) STOCKER FORMULA 4/28/2025

Monday's Missouri Stocker formula consists of **4065 (3215)** head with a weighted average weight of **533.49 (513.06)** lbs. and a price value of **374.50 (340.62)**, 2.27 higher (7.99 higher) than a week ago.

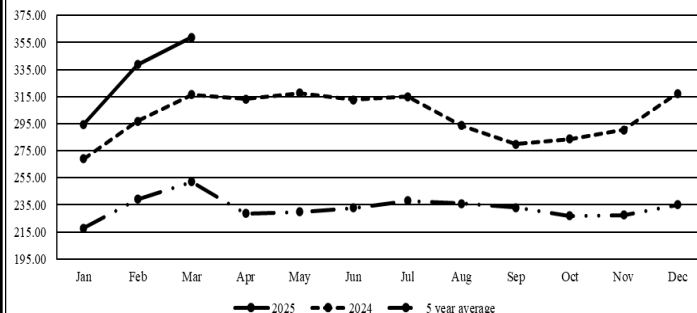
This a rolling seven day calculated weighted value which combines all Feeder Steers reported by MDA/USDA Market News Service weighing from 400-649 lbs. in the Medium and Large 1 and Medium and Large 1-2 frame and muscle classifications, including all comment cattle except Brahman X. Heifer values are in parentheses.

MISSOURI WEEKLY CATTLE AUCTION SUMMARY

Total Receipts: 23,059 Week Ago: 37,330 Year Ago: 32,408

Compared to the light test from last week, feeder steers and heifers sold steady to 5.00 higher. The supply of feeders was light as heavy rains once again limited auction volume combined with several of the northern sales already being on an off-schedule week. The majority of the feeder offering was calves this week with many fresh off of the cow and unweaned. Demand was good to very good as buyers continue to aggressively try to fill orders and keep prices in record territory. Ample moisture for most areas of the state has grass eager for more sunshine in order to really take off. The latest drought monitor finally showed significant improvement with most of the state drought free and just under 12 percent remaining listed as abnormally dry. Planting has been slow due to rains which seem to be spaced just right to prevent many fields from drying enough to get over. As of the start of last week 33 percent of corn and 15 percent of beans had been planted. A few stick out sales this week included 25 head of 455 lb. steers at Kingsville Livestock Auction which sold for 440.50, 22 head of 513 lb. steers for 421.00 and a full load of 807 lb. steers for 299.00. Windsor Livestock Auction sold 35 head of 702 lb. steers for 331.50, a full load of 859 lb. steers for 290.50 and 41 head of 969 lb. steers for 269.50. Joplin Regional Stockyards sold 22 head of 557 lb. steers for 405.00. Tina Livestock Auction had 34 head of 610 lb. steers which brought 363.00. On the heifer side Kingsville Livestock Auction sold 35 head of 506 lbs. fancy heifers for 378.50 and a full load of 709 lb. heifers at 310.00. Boxed beef cutouts were higher for the week. Choice closed on Friday at 336.48, up 4.96 and Select closed at 320.11, up 5.56 compared to last Friday. Negotiated feedlot sales were very slow to develop just under 14K head were reported as of the 2:00 report cutoff time Friday afternoon. Almost certain there was significant volume that occurred after the deadline to report that will show up on the weekly recap. Live prices were 2.00 to 6.00 higher and dressed sales were steady to 5.00 higher. Live sales were reported at 210.00-218.00 and dressed sales were reported at 335.00-342.00. The Missouri Stocker formula consists of 4065 head with a weighted average weight of 533.49 lbs. and a price value of 374.50, 2.27 higher than last week. The steer/heifer spread is 33.88 per cwt.

Missouri Stocker Formula - Steers

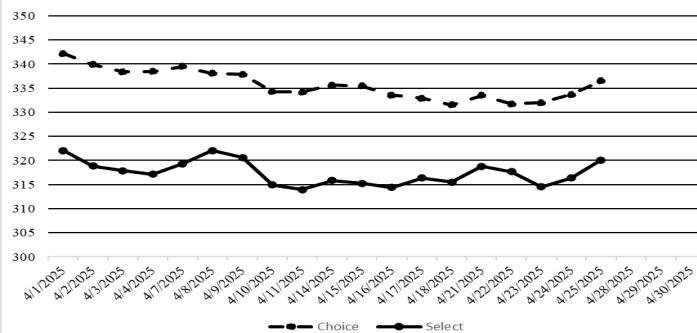


*Graph is updated the first Monday of each month. Axis value ranges may be updated to reflect data points.

NATIONAL BOXED BEEF CUTOUT VALUES

DATE	CHOICE	SELECT	TOTAL LOADS
04/21	333.52	318.77	75
04/22	331.73	317.65	134
04/23	331.97	314.52	171
04/24	333.70	316.35	102
04/25	336.48	320.11	96
5 Day Simple Average	333.48	317.48	

Boxed Beef Cuts April 2025



*Axis value ranges may be updated to reflect data points.

WEEKLY LIVESTOCK SLAUGHTER 4/26/25

	CATTLE	HOGS	SHEEP
Week to Date:	555,000	2,430,000	32,000
Last Week:	576,000	2,371,000	34,000
Last Year:	613,713	2,377,844	36,035

SOUTHWEST MISSOURI WEEKLY SUMMARY

(Joplin and Springfield)

Receipts: 7,122 Week ago: 11,534 Year Ago: 9,735
Compared to last week, steers and heifers uneven from 8.00 lower to 10.00 higher, spots up to 20.00 higher early week. Slaughter cows and bulls steady to 6.00 higher.

FEEDER STEERS: Medium and Large 1

300-400 lbs.	435.00-490.00
400-500 lbs.	395.00-460.00
500-600 lbs.	355.00-427.00
600-700 lbs.	310.00-377.00
700-800 lbs.	287.00-311.00
800-900 lbs.	272.00-285.00
900-1000 lbs.	267.00-273.00

FEEDER HEIFERS: Medium and Large 1

300-400 lbs.	390.00-450.00
400-500 lbs.	350.00-410.00
500-600 lbs.	307.00-359.00
600-700 lbs.	275.00-330.00
700-800 lbs.	264.00-288.00
800-900 lbs.	247.50-268.50
900-1000 lbs.	244.00-247.50

FEEDER HOLSTEIN STEERS Large 3

350-400 lbs.	285.00-320.00
17 hd 436 lbs.	297.50
500-600 lbs.	267.00-310.00
Pkg 626 lbs.	238.00
750-800 lbs.	226.00-242.00
800-900 lbs.	210.00-234.75
900-1000 lbs.	195.00-210.00

SLAUGHTER COWS: Breaking and Boning (70-85% lean) 139.00-150.00; high dressing 145.00-163.00; low dressing 115.00-137.00. Lean (85-90%) 120.00-142.50.

SLAUGHTER BULLS: Yield Grade 1-2 1200-2415 lbs. 160.00-182.50; high dressing 180.00-210.00; low dressing 147.50-167.50

BRED COWS: Medium and Large 1 2-8 yrs 1040-1450 lbs 2nd/3rd stage 2500.00-3100.00, 1st stage 2300.00-2550.00; >8 yrs 1120-1375 lbs 2nd/3rd stage 2375.00-2650.00. Medium and Large 1-2 2-8 yrs 865-1500 lbs 2nd/3rd stage 1800.00-2675.00, 1st stage 1800.00-2250.00; >8 yrs 1070-1345 lbs 2nd/3rd stage 1900.00-2150.00, 1st stage 1675.00-1900.00 per head

COW & CALF PAIRS: Medium and Large 1-2 2-8 yrs 1040-1445 lbs few rebred 1st stage with baby to 300 lb calves 2900.00-3500.00; >8 yrs 1465-1820 lbs few rebred 1st stage with 150-300 lb calves 3200.00-3450.00 per pair

SOUTH CENTRAL MISSOURI WEEKLY SUMMARY

(West Plains, Phillipsburg)

Receipts: 2,935 Week ago: 4,299 Year Ago: 4,781
Compared to last week, early week calves 6.00 to 12.00 higher, spots 20.00 higher and yearlings 3.00 to 6.00 higher. Late week feeders 5.00 lower to 10.00 higher. Slaughter cows and bulls steady to 3.00 lower.

FEEDER STEERS: Medium and Large 1

300-400 lbs.	430.00-495.00
400-500 lbs.	390.00-455.00
500-600 lbs.	357.50-399.00
600-700 lbs.	302.50-340.00
Pkg 760 lbs.	292.00
20 hd 835 lbs.	285.00
Pkg 962 lbs.	259.50

FEEDER HEIFERS: Medium and Large 1

300-400 lbs.	380.00-445.00
400-500 lbs.	355.00-420.00
500-600 lbs.	312.50-370.00
600-700 lbs.	294.50-316.00
18 hd 707 lbs.	277.00

FEEDER HOLSTEIN STEERS: Large 3

Pkg 480 lbs.	272.50
--------------	--------

SLAUGHTER COWS: Breaking and Boning (70-85% lean) 125.00-149.00, high dressing 144.00-159.00; low dressing 115.00-135.00. Lean (85-90%) 122.00-135.00

SLAUGHTER BULLS: Yield Grade 1-2 1260-2300 lbs. 160.00-177.00; high dressing 180.00-206.00; low dressing 132.00-158.00.

BRED COWS: Medium and Large 1 2-8 yrs 1155-1430 lbs 2nd/3rd stage 2400.00-2800.00. Medium and Large 1-2 2-4 yrs 975-1112 lbs 1st to 3rd stage 1950.00-2375.00; 2-8 yrs 985-1493 lbs 1st to 3rd stage 1700.00-2950.00 per head

COW & CALF PAIRS: Medium and Large 1-2 2-8 yrs 1020-1150 lbs with 150-300 lb calves 2400.00-2825.00; 2-8 yrs 1120 lbs rebred 1st stage with 150-300 lb calves 3200.00 per pair

WEST CENTRAL MISSOURI WEEKLY SUMMARY

(Kingsville, Windsor, Butler)

Receipts: 5,048 Week ago: 5,819 Year ago: 6,450
Compared to last week, steers and heifers firm to 10.00 higher, spots up to 15.00 higher on calves. Slaughter cows 1.00 to 4.00 higher.

FEEDER STEERS: Medium and Large 1

300-400 lbs.	445.00-510.00
400-500 lbs.	380.00-475.00
500-600 lbs.	350.00-416.00
600-700 lbs.	312.00-371.00
700-800 lbs.	291.00-331.50
800-900 lbs.	274.00-299.50
118 hd 936 lbs.	275.25

FEEDER HEIFERS: Medium and Large 1

300-400 lbs.	396.00-470.00
400-500 lbs.	320.00-429.00
500-600 lbs.	310.00-360.00
600-700 lbs.	275.00-312.00
700-800 lbs.	268.00-310.00
Pkg 815 lbs.	266.00

SLAUGHTER BULLS: Yield Grade 1-2 1470-2240 lbs. 168.00-198.00; high dressing 189.00-212.00; low dressing 166.00-180.00

SLAUGHTER COWS: Breaking and Boning (70-85% lean) 139.00-155.00, high dressing 150.00-162.50. Lean (85-90%) 121.00-148.00.

BRED COWS: Medium and Large 1 5-8 yrs 1408 lbs 2nd stage 2685.00. Medium and Large 1-2 2-8 yrs 850-1345 lbs 2nd/3rd stage 2100.00-2700.00 per head

COW & CALF PAIRS: Medium and Large 1-2 2-8 yrs 1200-1300 lbs some rebred 1st stage with baby to 300 lb calves 3200.00-3950.00 per pair

NORTHEAST MISSOURI WEEKLY SUMMARY

(Bowling Green, Kingdom City, Palmyra)

Receipts: 3,377 Week ago: 5,222 Year ago: 4,700
Compared to last week, calves under 600 lbs mostly steady with pot loads of yearling steers over 800 lbs and heifers over 600 lbs steady to firm. Slaughter cows steady.

FEEDER STEERS: Medium and Large 1

300-400 lbs.	400.00-482.50
400-500 lbs.	380.00-410.00
500-600 lbs.	350.00-398.00
600-700 lbs.	314.25-369.75
700-800 lbs.	292.00-312.50
900-1000 lbs.	263.50-273.25

FEEDER HEIFERS: Medium and Large 1

300-400 lbs.	387.50-420.00
400-500 lbs.	345.00-397.50
500-600 lbs.	318.00-356.00
600-700 lbs.	285.50-316.00
700-800 lbs.	278.00-284.00
22 hd 864 lbs.	246.25

SLAUGHTER BULLS: Yield Grade 1-2 1445-2070 lbs. 165.00-177.00; high dressing 183.00-196.00; low dressing 154.00-165.00.

SLAUGHTER COWS: Breaking and Boning, (70-85% lean) 136.00-149.00; high dressing 147.50-163.00; low dressing 124.00-135.00. Lean (85-90%) 123.00-135.00.

SLAUGHTER STEERS: Choice 2 -3 210.00-217.00. Select and Choice 1-3 209.50.

SLAUGHTER HEIFERS: Choice 2-3 210.00-217.00. Select and Choice 1-3 208.00-210.50.

BRED COWS: Scarce

COW CALF PAIRS: Scarce

NORTH CENTRAL MISSOURI WEEKLY SUMMARY

(Macon, Unionville, Green City, New Cambria)

Receipts: 750 Week ago: 4,292 Year ago: 785
No feeder market for comparison. Slaughter cows steady to 2.00 higher.
*Some sale barns on a bi-weekly schedule and may not have a sale each week.

FEEDER STEERS: Medium and Large 1

Scarce

FEEDER HEIFERS: Medium and Large 1

Scarce

Scarce

SLAUGHTER BULLS: Yield Grade 1-2 1430-1645 lbs. 182.00-182.50

SLAUGHTER COWS: Breaking and Boning (70-85% lean) 138.00-148.00, high dressing 149.00-161.00. Lean (85-90%) 123.00-135.00

BRED COWS: Medium and Large 1 2-8 yrs 1034-1348 lbs 2nd stage 3100.00-3400.00. Medium and Large 1-2 2-8 yrs 1065-1490 lbs 2nd/3rd stage 2500.00-3175.00, 1st stage 2200.00-2500.00; >5 yrs 1072-1282 lbs 2nd stage 2225.00-2700.00 per head

HEIFER PAIRS: Medium and Large 1 2-8 yrs 1100-1500 lbs with 150-300 lb calves 4200.00-4300.00; >5 yrs 1250-1300 lbs with 150-300 lb calves 3200.00-3485.00. Medium and Large 1-2 2-8 yrs 900-1350 lbs with 150-300 lb calves 3150.00-3200.00 per pair

SOUTHEAST MISSOURI WEEKLY SUMMARY

(Jackson and Farmington)

Receipts: 1,226 Week ago: 2,026 Year ago: 1,078
Compared to last week, steers and heifers 9.00 to 22.00 higher. Slaughter cows 3.00 to 4.00 higher. Slaughter bulls 2.00 to 4.00 higher.

FEEDER STEERS: Medium and Large 1

300-400 lbs. 430.00-490.00
400-500 lbs. 392.00-456.00
500-600 lbs. 350.00-395.00
600-700 lbs. 280.00-340.00
700-800 lbs. 262.00-290.00
800-850 lbs. 257.00-270.00

FEEDER HEIFERS: Medium and Large 1

300-400 lbs. 365.00-450.00
400-500 lbs. 335.00-405.00
500-600 lbs. 275.00-357.00
600-700 lbs. 274.00-307.00
700-750 lbs. 254.00-263.00

SLAUGHTER BULLS: Yield
Grade 1-2 1255-2280 lbs 154.00-
157.50, high dressing 160.50-
195.00.

SLAUGHTER COWS: Breaking
and Boning (75-85% lean) 127.50-
138.50; high dressing 137.50-
159.00. Lean (85-90% lean) 92.00-
118.00

BRED COWS: Medium and Large
2 2-8 yrs 1005-1275 lbs 2nd stage
2200.00-2600.00, 1st stage
1450.00-2200.00; >8 yrs 1055-
1440 lbs 1st to 3rd stage 1700.00-
2500.00 per head

COW & CALF PAIRS: Medium
and Large 2 2-8 yrs 1100-1350 lbs
with baby to 300 lb calves 1775.00
-3200.00 per pair

EAST CENTRAL MISSOURI WEEKLY SUMMARY

(Cuba, Vienna)

Receipts: 748 Week Ago: 2,805 Year ago: 2,378
Compared to last week, steers steady to 5.00 higher. Feeder heifers
5.00 to 10.00 higher. Slaughter cows steady.

FEEDER STEERS: Medium and Large 1

300-400 lbs. 440.00-480.00
400-500 lbs. 392.50-465.00
500-600 lbs. 347.00-385.00
600-700 lbs. 331.00-350.00

FEEDER HEIFERS: Medium and Large 1

300-400 lbs. 367.50-425.00
400-500 lbs. 348.00-400.00
500-600 lbs. 312.50-352.00
600-650 lbs. 324.00
700-750 lbs. 275.00-280.00

SLAUGHTER BULLS: Yield
Grade 1-2 1290-2055 lbs 162.00
-177.00; high dressing 179.00-
180.00; low dressing 141.00-
160.00

SLAUGHTER COWS: Breaking
and Boning, (70-85% lean) 136.00-
148.00. Lean (85-90%) 120.00-
134.50

BRED COWS: Medium and
Large 1-2 5-8 yrs 1130-1500 lbs
1st/2nd stage 1950.00-2750.00
per head

COW & CALF PAIRS: Medium
and Large 1 5-8 yrs 1225 lbs with
baby calves 3400.00 per pair

NORTHWEST MISSOURI WEEKLY SUMMARY

(Tina)

Receipts: 1,853 Week Ago: 1,333 Year Ago: 2,501
Compared to last week, steers and heifers 5.00 to 20.00 higher. Slaughter
cows and bulls 1.00 to 4.00 higher.

FEEDER STEERS: Medium and Large 1

300-400 lbs. 422.00-435.00
400-500 lbs. 408.00-451.50
500-600 lbs. 360.00-400.00
600-700 lbs. 312.50-363.00
Pkg 770 lbs. 277.50
62 hd 925 lbs. 279.25

FEEDER HEIFERS: Medium and Large 1

350-400 lbs. 376.00-388.00
400-500 lbs. 361.50-390.00
500-600 lbs. 303.50-359.00
700-750 lbs. 290.75-292.10
Pkg 1019 lbs. 216.50

SLAUGHTER BULLS:
Yield Grade 1-2 1700-1915 lbs
175.00-182.00

SLAUGHTER COWS: Breaking
and Boning, (70-85% lean) 136.00-
151.00; high dressing 148.50-
160.00. Lean (85-90%) 115.00-
145.50

BRED COWS: Medium and
Large 1-2 2-4 yrs 1182-1216 lbs
1st to 3rd stage 3025.00-3050.00;
2-8 yrs 1070-1365 lbs 1st to 3rd
stage 2000.00-3100.00; >5 yrs
1222-1237 lbs 2nd/3rd stage
1650.00-1700.00 per head

COW/CALF PAIRS: Medium and
Large 1 2-4 yrs 1100-1200 lbs
some rebred 1st stage with 150 to
>300 lb calves 3500.00-4300.00.
Medium and Large 1-2 2-4 yrs
1150-1275 lbs with <150 to 300 lb
calves 3500.00-3850.00 per pair

AFTERNOON NATIONAL SLAUGHTER CATTLE REVIEW

So far for Friday negotiated cash trade has been light on moderate demand in all trading regions. A few live FOB purchases in the Texas Panhandle traded at 212.00. In the Western Cornbelt, a few live FOB purchases traded at 218.00. However, not enough in any region for a market trend. Last week in the Texas Panhandle, live FOB purchases traded from 208.00-210.00. For the prior week in Kansas, live FOB purchases traded at 210.00. Last week in Nebraska, live FOB purchases traded from 212.00-214.00 and dressed delivered purchases traded from 332.00-340.00. For the prior week in the Western Cornbelt, live FOB purchases traded at 212.00 and dressed delivered purchases traded at 335.00.

Negotiated Cash Sales:

Confirmed:	8,535	Week Ago:	3,017	Year Ago:	5,527
Week to date:	13,630	Week Ago:	64,381	Year Ago:	89,294

<u>Live Basis</u>	<u>Steers</u>	<u>Heifers</u>
Over 80% Choice	212.00-218.00 avg 216.82	213.00-218.00 avg 215.77
65-80% Choice	212.00-215.00 avg 212.53	212.00-212.00 avg 212.00
35-65% Choice	-	212.00-212.00 avg 212.00
0-35% Choice	-	-
Total All Grades	212.00-218.00 avg 216.20	212.00-218.00 avg 214.27
<u>Dressed Basis</u>		
Over 80% Choice	335.00-342.00 avg 337.82	335.00-340.00 avg 337.44
65-80% Choice	-	340.00-340.00 avg 340.00
35-65% Choice	-	-
0-35% Choice	-	-
Total All Grades	335.00-342.00 avg 337.82	335.00-340.00 avg 338.73

<u>All Beef Type</u> <u>Steers/Heifers</u>	<u>Head</u>	<u>Avg Wt</u>	<u>Price Range</u>	<u>Wtd Avg</u>
Live FOB	5601	1433.3	210.00-218.00	215.13
Live Del	212	1417.0	213.00-216.00	215.35
Dressed Del	2066	942.5	335.00-343.00	339.29
Dressed FOB	386	959.1	336.00-338.00	337.79

WEEKLY COMMODITY FUTURES TRENDS

Compared to last week, Live Cattle 3.13 to 4.43 higher, Lean Hogs 1.80 to 3.13 higher, Feeder Cattle 3.43 to 4.78 higher.

Daily Futures Closes

	Mon.	Tues.	Wed.	Thu.	Fri.
Cattle					
Apr	209.77	211.37	212.70	213.50	214.25
Jun	203.75	206.27	208.10	208.00	208.25
Aug	200.00	202.45	203.87	204.10	204.10
Oct	198.22	200.47	201.70	202.07	201.97
Dec	198.72	200.85	201.75	202.10	201.95
Lean Hogs					
May	91.02	92.22	91.87	91.95	92.80
Jun	98.05	100.27	100.15	99.92	101.15
Jul	98.25	100.27	100.30	100.05	101.17
Aug	96.87	98.22	98.47	98.30	99.07
Oct	81.75	82.10	82.40	82.30	83.00
Fdr Cattle					
May	285.52	286.92	288.35	289.07	290.52
Aug	289.15	291.25	292.17	292.70	294.30
Sep	288.00	290.25	291.20	291.77	293.55
Oct	285.92	288.32	289.32	289.87	291.77
Nov	283.32	285.70	286.77	287.42	289.35
Milk					
Apr	17.37	17.38	17.42	17.47	17.45
May	18.16	18.37	18.65	18.32	18.27
Jun	17.28	17.35	17.45	17.17	17.08

WEEKLY COMMODITY GRAIN FUTURES TRENDS

Compared to last week, Soybeans 0.03 to 0.14 higher, Wheat 0.14 to 0.18 lower, Corn 0.03 to 0.12 lower, KC Wheat 0.18 to 0.19 lower, Soybean Meal 4.60 to 5.60 lower.

Daily Grain Futures Closes

	Mon.	Tues.	Wed.	Thu.	Fri.
Soybeans					
May	1029 1/2	1035	1040 3/4	1053	1049 3/4
Jul	1041 1/2	1046	1050 1/4	1062	1059 1/4
Aug	1037 3/4	1040 1/2	1043 1/4	1054 1/4	1053
Sep	1020 1/2	1021 1/4	1023	1032	1032 1/2
Nov	1025 3/4	1026 1/2	1027 1/2	1035 1/2	1035
Wheat					
May	538 1/2	535 1/2	528 1/4	529 1/4	530
Jul	552 1/4	550 1/4	543 1/2	544 1/2	545
Sep	567 1/4	564 1/4	558 1/4	559	559 1/2
Dec	590 1/4	586	580 1/4	581 1/2	582 1/4
Mar	609 1/2	605 1/4	599 1/2	601 1/4	601 3/4
Corn					
May	481 3/4	475 3/4	472	477 1/4	478 3/4
Jul	490	483 1/4	479 1/4	484	485 1/2
Sep	456 3/4	450	445 1/2	446 1/2	445 3/4
Dec	464 1/2	458	454 1/2	456 1/2	455 3/4
Mar	477	471 3/4	468 1/2	471	470
KC Wheat					
May	550 3/4	546	537 3/4	537 3/4	538
Jul	563 3/4	558 1/4	550 1/4	550 3/4	551
Sep	578 1/2	573	565	565 3/4	566 1/4
Dec	601 3/4	596 1/4	588 1/4	589 1/4	589 3/4
Mar	621 1/4	615 3/4	608	609 1/4	609 1/4
SB Meal					
May	292.90	291.90	290.80	288.70	290.00
Jul	300.30	299.50	298.60	296.70	298.50
Aug	302.30	301.30	300.40	298.70	300.40
Sep	303.20	302.20	301.60	300.00	301.50
Oct	303.40	302.40	302.20	300.40	301.80

MISSOURI GRAIN WEEKLY TRENDS

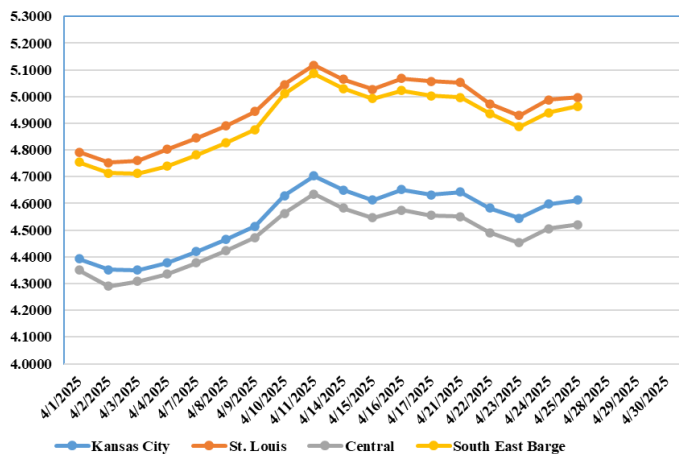
Compared to last week, Soybeans 0.13 to 0.38 higher, Wheat 0.12 to 0.18 lower, Corn unch to 0.01 higher.

Area	#1 Soybeans	#2 Soft Wheat	#2 Corn	#2 Grain Sorghum
Kansas City				
Friday**	Holiday			
Monday	9.75-10.50	5.29	4.42-4.87	4.07
Tuesday	9.80-10.55	5.25	4.35-4.80	4.00
Wednesday	9.85-10.60	5.18	4.32-4.77	3.97
Thursday	9.98-10.73	5.19	4.37-4.82	4.02
Friday	9.94-10.69	5.20	4.38-4.83	4.03
St. Louis				
Friday**	Holiday			
Monday	10.54-10.55	5.34-5.39	5.04-5.07	—
Tuesday	10.60	5.35	4.96-4.97	—
Wednesday	10.66	5.28	4.93	—
Thursday	10.81	5.29	4.98-4.99	—
Friday	10.77	5.30	4.99	—
Central				
Friday**	Holiday			
Monday	9.95-10.10	5.09	4.52-4.57	—
Tuesday	10.00-10.15	5.05	4.45-4.50	—
Wednesday	10.10-10.20	4.98	4.42-4.47	—
Thursday	10.23-10.38	4.99	4.47-4.52	—
Friday	10.24-10.34	5.00	4.48-4.53	—
S.E. MO				
Friday**	Holiday			
Monday	10.25-10.50	—	4.98-5.02	—
Tuesday	10.30-10.55	—	4.91-4.95	—
Wednesday	10.35-10.60	—	4.87-4.92	—
Thursday	10.48-10.73	—	4.92-4.97	—
Friday	10.44-10.72	—	4.93-4.98	—

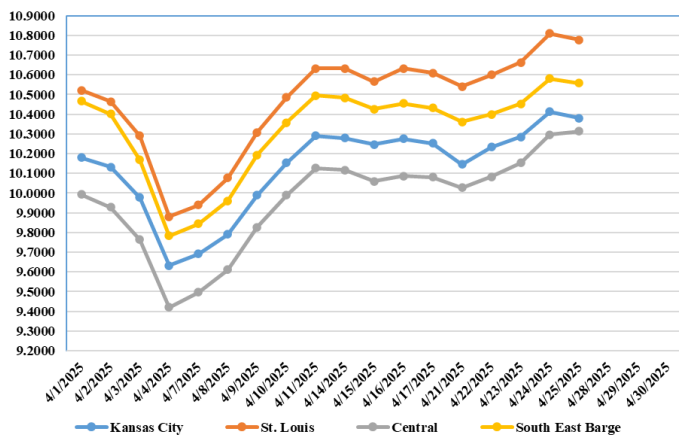
(PRICES PER BUSHEL) *NEW CROP **PREVIOUS WEEK'S PRICES
*Bids calculated using Kansas City, St. Louis, and St. Joseph bids

MONTHLY GRAIN CROP

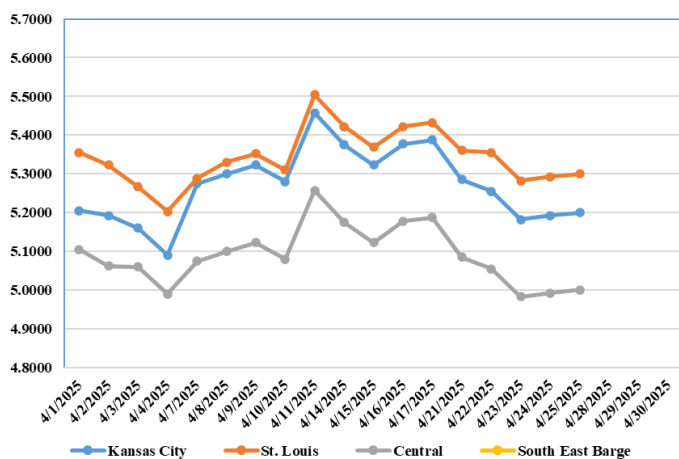
April 2025 Corn Bids



April 2025 Soybean Bids



April 2025 Wheat Bids



*Axis value ranges may be updated to reflect data points.
Only dates in which markets are trading and only current cash bids are represented.

WHOLESALE FEEDSTUFFS PRICES (DOLLARS PER TON-BULK BASIS)

Area	Cottonseed Meal 41%	Soybean Meal 46.5-48%	Corn Gluten Pellets 21%	Wheat Middlings
Kansas City	300.00	275.20	196.00	111.67
St. Louis	295.00	n/a	190.50	100.00

MISSOURI CROP PROGRESS AND CONDITION 4/21/25

There were 5.2 days suitable for fieldwork in the week ending April 20, 2025. Topsoil moisture supply was rated 1 percent very short, 5 percent short, 66 percent adequate, and 28 percent surplus. Subsoil moisture supply was rated 2 percent very short, 8 percent short, 79 percent adequate, and 11 percent surplus. Corn planted reached 33 percent, compared to the 5-year average of 25 percent. Corn emerged reached 6 percent, compared to the 5-year average of 4 percent. Soybeans planted reached 15 percent, compared to the 5-year average of 6 percent. Soybeans emerged reached 2 percent, compared to the 5-year average of 1 percent. Cotton planted reached 2 percent, compared to the 5-year average of 1 percent. Rice planted reached 18 percent, compared to the 5-year average of 29 percent. Rice emerged reached 7 percent, compared to the 5-year average of 5 percent. Winter wheat headed reached 13 percent, compared to the 5-year average of 8 percent. Winter wheat condition was rated 4 percent poor, 23 percent fair, 59 percent good, and 14 percent excellent.

	Week Ending			
	4/20/25	4/13/25	4/20/24	5 yr avg
Corn Planted	33	9	44	25
Corn Emerged	6	1	10	4
Soybeans Planted	15	5	15	6
Soybeans Emerged	2	-	3	1
Cotton Planted	2	1	3	1
Rice Planted	18	6	53	29
Rice Emerged	7	-	12	5
Winter Wheat Headed	13	9	20	8

COLD STORAGE 4/24/25

Total natural cheese stocks in refrigerated warehouses on March 31, 2025 were up 1 percent from the previous month but down 4 percent from March 31, 2024.

Butter stocks were up 6 percent from last month and up 4 percent from a year ago.

Total frozen poultry supplies on March 31, 2025 were up 1 percent from the previous month but down 3 percent from a year ago. Total stocks of chicken were down 1 percent from the previous month but up 3 percent from last year. Total pounds of turkey in freezers were up 4 percent from last month but down 15 percent from March 31, 2024.

Total frozen fruit stocks were down 10 percent from last month but up 3 percent from a year ago.

Total frozen vegetable stocks were down 8 percent from last month and down 4 percent from a year ago.

Total red meat supplies in freezers were down 1 percent from the previous month and down 4 percent from last year. Total pounds of beef in freezers were down 2 percent from the previous month but up 1 percent from last year. Frozen pork supplies were down slightly from the previous month and down 9 percent from last year. Stocks of pork bellies were up 14 percent from last month but down 26 percent from last year.

MISSOURI WEEKLY HAY SUMMARY 4/23/2025

Heavy rains over the last week stopped all field work once again. Flooding occurred along many smaller creeks and rivers across the state and standing water became common in many low-lying fields. All but a few counties in the NW and NE parts of the state have been removed from the drought monitor now. With most areas having ample moisture the above average temperatures this week should really get pastures and hay fields growing. As of earlier this week 69 percent of the state's pastures were rated in good to excellent condition, 23 percent fair and 4 percent poor. Hay prices are steady to weak, supply and demand are light to moderate. The Missouri Department of Agriculture has a hay directory at <https://apps.mda.mo.gov/haydirectory> or visit the University of Missouri Extension feed stuff finder at <https://feedstufffinder.org>
Alfalfa - Supreme 250.00-300.00, small square 10.00-14.00 per bale
Alfalfa - Premium 175.00-225.00
Alfalfa - Good 150.00-175.00, small square 6.00-10.00 per bale
Alfalfa - Fair 125.00-150.00
Mixed grass - Good/Premium 125.00-200.00
Mixed grass-Fair/Good 80.00-125.00, small square 3.50-8.00 per bale
Mixed grass - Fair 25.00-50.00 per large round bale
Wheat straw - 4.00-7.00 per small square bale
Corn Stalks - 10.00-25.00 per large round bale

Please Note: The above volumes (tonnage, acres, and bales) listed are for confirmed trades only, it does not include estimated volume (tonnage) for bids or offers to the trade. List your hay for sale at: [Hay Listing Online Form](#). Explanation of Hay Quality Guidelines: [Hay Quality Designation Guidelines](#). Glossary of Terms: [Livestock, Poultry, & Grain Hay Terms](#)

MISSOURI WEEKLY SHEEP/GOAT AUCTION SUMMARY

Receipts: 2,298 Week Ago: 1,877 Last Year: 3,322
SHEEP: Feeder lambs Medium and Large 1-2 hair 20-50 lbs 220.00-295.00, thin 212.00-219.00.
Slaughter lambs Choice and Prime 1-3 w/s 65-80 lbs 255.00-285.00; pkg 107 lbs 155.00. Choice and Prime 1-3 hair 50-85 lbs 230.00-330.00; 90-100 lbs 210.00-255.00; pkg 105 lbs. 190.00. Choice 1-3 hair 50-85 lbs 210.00-275.00. Good 1-2 50-55 lbs 170.00-202.50; pkg 72 lbs 215.00.
Slaughter ewes Good 2-3 80-100 lbs 130.00-150.00; pkg 112 lbs 125.00. Utility and Good 1-3 hair 60-140 lbs 90.00-120.00. Utility and Good 1-3 hair 80-120 lbs 105.00-145.00. Cull and Utility 1-2 hair 110-135 lbs 80.00-90.00. Bucks 1-2 hair 100-195 lbs 100.00-165.00.
Replacement ewes Small and Medium 1-2 hair <1 yrs open 55-75 lbs 310.00-350.00; 1-2 yrs 65-70 lbs exp 142.00-147.50; 80-95 lbs 190.00-195.00; 16 hd 119 lbs 145.00; 2-4 yrs 90-150 lbs exp 132.00-157.00; 4-6 yrs 80-125 lbs exp 140.00-145.00. Small and Medium 1-2 <1 yrs 50 lbs open 155.00/ha; 1-2 yrs 115 lbs exp 180.00/hd; 2-4 yrs 90 lbs exp 145.00/hd; 100-115 lbs exp 220.00-250.00/hd; 4-6 yrs 110 lb spr 150.00/hd. Families Small and Medium 1-2 2-4 yrs 130 lbs with <20 lb lambs fam.
GOATS: Feeder kids Selection 1 30-50 lbs 300.00-380.00. Selection 2 25-50 lbs 220.00-305.00. Selection 3 30-40 lbs 195.00-202.00, pygmies 130.00-142.00.
Slaughter kids Selection 1 50-80 lbs 340.00-415.00, fancy 460.00; 80-85 lbs 330.00-355.00. Selection 2 50-95 lbs 250.00-325.00.
Slaughter nannies Selection 1-2 60-80 lbs 135.00-175.00; 90-140 lbs 130.00-165.00.
Slaughter bucks 150-175 lbs 145.00-295.00.
Wethers Selection 1-2 pkg 66 lbs 270.00; pkg 88 lbs 205.00; 90-95 lbs 275.00-282.50; pkg 100 lbs 320.00.
Replacement nannies Selection 1-2 2-4 yrs 65-90 lbs exp 205.00-217.00; 10 hd 104 lbs exp 185.00. Selection 1-2 2-4 yrs 161 lbs exp 220.00/hd.
Families Selection 1-2 >6 yrs 60-105 lbs exp 110.00-130.00/fam

Explanatory Notes: Stage - Represents estimated lambing/kidding period (Open, Exp=exposed, Bred, Fall = Sep-Nov, Win = Dec-Feb, Spr = Mar-May, Sum=Jun-Aug; w/s = woolled and shorn; /hd= per head; /fam=per family
All price CWT unless otherwise noted.

MISSOURI DROUGHT MONITOR

Date	None	D0	D1	D2	D3	D4
4/22/25	88.20	11.73	0.07	0	0	0
4/15/25	61.49	32.55	5.96	0	0	0
4/23/24	27.70	32.82	36.08	3.40	0	0

Reflects percentage of Missouri impacted by drought. D0 Abnormally Dry; D1 Moderate Drought; D2 Severe Drought; D3 Extreme Drought; D4 Exceptional Drought

NATIONAL DIRECT DELIVERED FEEDER PIG REPORT

4/18/25 Receipts: 125,609 Week ago: 57,924 Year Ago: 103,846
Early weaned pigs steady to 2.00 lower and feeder pigs no comparison.
Cash 60,035 head 33.00-52.00, weighted average 41.68
Formula 40,494 head 38.86-55.97, weighted average 48.47
Feeder pigs 40 pounds basis: Cash 25,080 head 75.00-96.00, weighted average 82.81

NATIONAL DAILY DIRECT PRIOR DAY HOG REPORTS 4/28/25

BARROWS AND GILTS (Carcass Basis): 3,396 head
Base Carcass Price 86.00-94.00, weighted average 91.46

SOWS (Live Basis): 7,307 head
300-500 lbs. 25.00-88.00
Over 500 lbs. 42.00-79.00

MISSOURI WEEKLY DIRECT SLAUGHTER CATTLE REPORT 4/25/25

Weekly Receipts: 200 Week ago: 240 Year ago: 280
Trading as of Friday morning, slow as many bids being passed. Grid sales 4.00 higher. flat dressed

LIVE STEERS & HEIFERS:
No sales reported
DRESSED STEERS & HEIFERS:
4 loads flat Thur 335.00
2 loads flat Fri 335.00

GRADE AND EIGHT (Grid): 2 loads late last Friday 340.00
3 loads Friday 344.00.

Click here for the current [National Crop Progress](#)
Click here for the current [Missouri Crop Progress](#)
The current hay directory can be found at: [Hay Directory](#).