

Weekly Market Summary

Published by:
Missouri Department of Agriculture
Ag Business Development Division
Market News Program



Chris Chinn, Director
 Jill Wood, Division Director
 Tony Hancock, Editor
[agmarketnews.mo.gov](http://www.ams.usda.gov/marketnews.htm)
<http://www.ams.usda.gov/marketnews.htm>

Michael Kehoe, Governor

Volume XLV, Number 19 ♦ P.O. Box 630, Jefferson City, MO 65102 ♦ (573) 751-4211 ♦ Mon, May 12, 2025

MISSOURI WEEKLY FEEDER CATTLE WEIGHTED AVERAGE REPORT

Feeder Cattle Receipts: 35,901 Week ago: 34,388 Year ago: 24,569
 Steers and Heifers Medium and Large 1—Weighted average weights and prices

STEERS: Medium and Large 1

274 lbs. 496.58	474 lbs. 429.88	670 lbs. 342.59	882 lbs. 285.57
325 lbs. 490.09	527 lbs. 403.20	721 lbs. 319.97	915 lbs. 279.34
376 lbs. 468.56	573 lbs. 382.56	768 lbs. 311.68	1003 lbs. 256.21
428 lbs. 453.92	622 lbs. 363.88	825 lbs. 294.70	1086 lbs. 239.64

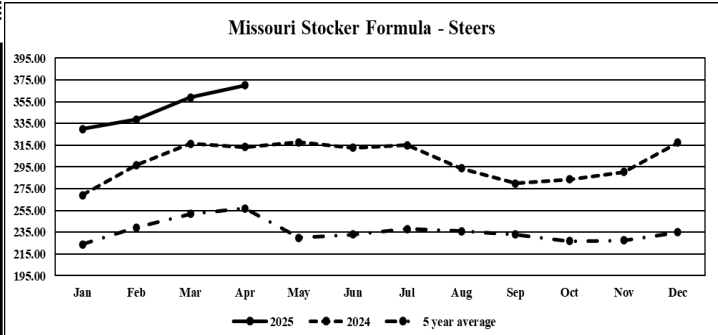
HEIFERS: Medium and Large 1

289 lbs. 458.54	475 lbs. 377.12	675 lbs. 309.00	863 lbs. 286.04
326 lbs. 440.80	523 lbs. 355.65	711 lbs. 311.47	915 lbs. 251.06
376 lbs. 427.40	576 lbs. 331.96	767 lbs. 293.69	1016 lbs. 234.40
424 lbs. 404.89	622 lbs. 317.61	831 lbs. 269.74	1059 lbs. 224.49

MISSOURI STEER (HEIFER) STOCKER FORMULA 5/12/2025

Monday's Missouri Stocker formula consists of **9617 (7821)** head with a weighted average weight of **536.33 (517.90)** lbs. and a price value of **389.18 (350.34)**, 1.82 higher (7.24 higher) than a week ago.

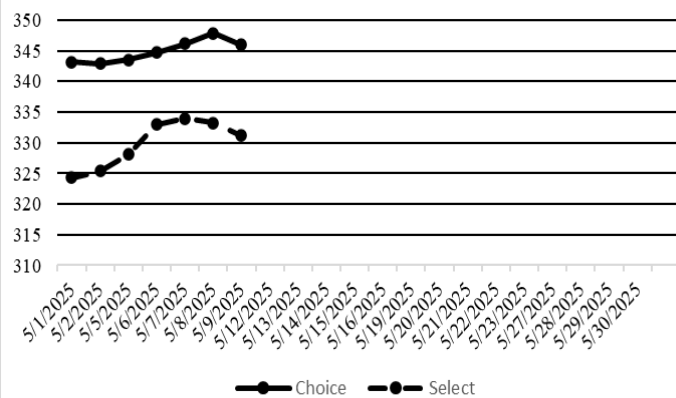
This a rolling seven day calculated weighted value which combines all Feeder Steers reported by MDA/USDA Market News Service weighing from 400-649 lbs. in the Medium and Large 1 and Medium and Large 1-2 frame and muscle classifications, including all comment cattle except Brahman X. Heifer values are in parentheses.



NATIONAL BOXED BEEF CUTOUT VALUES

DATE	CHOICE	SELECT	TOTAL LOADS
5/5/25	343.57	328.07	81
5/6/25	344.67	332.97	117
5/7/25	346.15	334.00	102
5/8/25	347.89	333.20	122
5/9/25	345.97	331.17	105
5 Day Simple Average	345.65	331.88	

Boxed Beef Cuts May 2025



*Axis value ranges may be updated to reflect data points.

WEEKLY LIVESTOCK SLAUGHTER 5/10/25

	CATTLE	HOGS	SHEEP
Week to Date:	559,000	2,437,000	35,000
Last Week:	559,000	2,486,000	33,000
Last Year:	615,769	2,380,123	36,485

MISSOURI WEEKLY CATTLE AUCTION SUMMARY

Total Receipts: 41,736 Week Ago: 40,473 Year Ago: 29,107

Compared to last week, steers and heifers mostly steady to 5.00 higher, however there were some spots 5.00 lower on unweaned, less attractive cattle and spots 10.00 higher on program, good condition cattle. The extreme tops weren't seen this week, especially on the calf offering. The feeder supply was moderate. A thing of note was the feeder supply was mostly under 600 lbs with yearlings at only 40 percent of the statewide offering. Demand for all classes of cattle remain good to very good. Producers are continuing to take the opportunity to market calves early as prices have been breaking record levels. Farmers have also been making planting progress, in areas that are dry enough to work. Last week's Missouri Crop Progress report showed 54 percent of the state's corn has been planted and 31 percent has emerged, close to the five-year average for both. For soybeans, planting progress is at 28 percent complete and 9 percent emerged, a little ahead of the five-year average for planting, but in line with emergence average. While we did get some rain over the last week, late week and into the weekend provided some wind and warmer weather, allowing fields to dry out. Today's report should show that farmers had several days of planting progress. Along with planting progression, alfalfa has started to be cut across the state and farmers have also started wrapping some fields of rye and wheat. Last week's crop progress report showed winter wheat condition categorized: 9 percent excellent, 67 percent good, 20 percent fair, and 4 percent poor. In the markets this week, a few stick out sales: Joplin Regional Stockyards had 306 head of 763 lb heifers at 293.00, 85 head of 867 lb heifers at 267.25; Kingsville Livestock Auction had 181 head of 776 lb steers at 322.50, 142 head of 709 lb heifers at 320.00; Eastern Missouri Commission Company had 104 head of 1054 lb heifers at 242.00; Green City Livestock Auction had 80 head of 756 lb heifers at 307.00, 72 head of 751 lb heifers at 307.00. Boxed beef cuts closed out the week at 345.97 for Choice and 331.17 for Select, 3.07 higher and 5.82 higher compared to a week ago, respectively. As of the Friday afternoon report, negotiated feedlot sales totaled just over 80,000 head. Nebraska had live purchases on Thursday from 225.00 to 228.00 and dressed mostly at 355.00. The Western Cornbelt reached top prices of 230.00 live and one load at 360.00 dressed delivered on Friday, albeit most trade was from 226.00 to 228.00 live. The Missouri Stocker Formula consists of 9617 head with a weighted average weight of 536.33 lbs. and a price value of 389.18, 1.82 higher than last week. The Stocker Formula once again hit an all-time high on Thursday at 289.45.

The Weekly Market Summary, as well as historical summaries, are available on our website <https://agmarketnews.mo.gov/summaries>
 Market News Hotline: 1-573-522-9244
 Check out the latest updates on our YouTube Channel: [MDA Market News](https://www.youtube.com/channel/UC...)

SOUTHWEST MISSOURI WEEKLY SUMMARY

(Joplin and Springfield)

Receipts: 11,226 Week ago: 10,610 Year Ago: 8,109
Compared to last week, early week feeders 5.00 lower to 5.00 higher, spots 12.00 higher on light weight heifers. Late week steers 5.00 to 10.00 higher and heifers 10.00 to 20.00 higher. Slaughter cows and bulls steady to 4.00 higher.

FEEDER STEERS:
Medium and Large 1

Table with 2 columns: Weight (300-1100 lbs) and Price Range (450.00-238.50).

FEEDER HEIFERS:
Medium and Large 1

Table with 2 columns: Weight (300-1100 lbs) and Price Range (400.00-220.00).

FEEDER HOLSTEIN STEERS
Large 3

Scarce Scarce

SLAUGHTER COWS: Breaking and Boning (70-85% lean) 137.00-156.00; high dressing 150.00-165.00; low dressing 132.00-145.00. Lean (85-90%) 123.00-146.00.

SLAUGHTER BULLS: Yield Grade 1-2 1235-2390 lbs. 165.00-188.00; high dressing 182.50-202.50; low dressing 147.00-165.00

BRED COWS: Medium and Large 1 2-4 yrs 1085-1160 lbs 2nd/3rd stage 3100.00-3350.00, 1st stage 2700.00; 2-8 yrs 1060-1605 lbs 2nd/3rd stage 2400.00-3150.00, 1st stage 2300.00-2400.00; >8 yrs 1040-1320 lbs 2nd/3rd stage 2150.00-2800.00 per head
BRED HEIFERS: Medium and Large 1 <2 yrs 970 lbs 2nd/3rd stage 2750.00; 2-4 yrs 1020-1160 lbs 2nd/3rd stage 2400.00-3575.00 per head

COW & CALF PAIRS: Medium and Large 1 2-8 yrs 1350-1462 lbs with 150-300 lb calves 3525.00; 2-4 yrs 1090 lbs with >300 lb calves 4000.00; 2-4 yrs 1075 lbs rebred 1st stage 4850.00. Medium and Large 1-2 2-4 yrs 970-1075 lbs with baby to >300 lb calves 3500.00-4200.00; 2-8 yrs 970-1280 lbs with baby to >300 lb calves 2800.00-3600.00 per pair

SOUTH CENTRAL MISSOURI WEEKLY SUMMARY

(West Plains, Phillipsburg)

Receipts: 5,229 Week ago: 3,895 Year Ago: 4,118
Compared to last week, steer and heifer calves uneven from 4.00 lower to 5.00 higher, except some peewee light weights up to 25.00 higher. Yearlings steady to 6.0 higher. Slaughter cows and bulls mixed from 3.00 lower to 2.00 higher.

FEEDER STEERS:
Medium and Large 1

Table with 2 columns: Weight (300-1000 lbs) and Price Range (445.00-261.00).

FEEDER HEIFERS:
Medium and Large 1

Table with 2 columns: Weight (300-1000 lbs) and Price Range (387.50-256.00).

FEEDER HOLSTEIN STEERS:
Large 3

Scarce Scarce

SLAUGHTER COWS: Breaking and Boning (70-85% lean) 130.00-153.00, high dressing 149.00-165.00; low dressing 130.00-138.00. Lean (85-90%)124.50-141.00

SLAUGHTER BULLS: Yield Grade 1-2 1235-2585 lbs. 163.50-183.00; high dressing 176.50-208.00; low dressing 134.00-162.00.

BRED COWS: Medium and Large 1 2-8 yrs 1250-1460 lbs 2nd/3rd stage 2450.00-2500.00. Medium and Large 1-2 2-8 yrs 1140-1545 lbs 2nd/3rd stage 2175.00-2850.00, 1st stage 2050.00-2450.00 per head

COW & CALF PAIRS: Medium and Large 1-2 2-8 yrs 1188-1212 lbs rebred 1st/2nd stage with 150-300 lb calves 3500.00-3600.00 per pair

WEST CENTRAL MISSOURI WEEKLY SUMMARY

(Kingsville, Windsor, Butler)

Receipts: 6,381 Week ago: 7,284 Year ago: 5,531
Compared to last week, steers and heifers steady to 10.00 higher, spots 20.00 higher on steer calves and some heifers. Slaughter cows and bulls steady to 5.00 higher.

FEEDER STEERS:
Medium and Large 1

Table with 2 columns: Weight (300-850 lbs) and Price Range (407.50-293.50).

FEEDER HEIFERS:
Medium and Large 1

Table with 2 columns: Weight (300-750 lbs) and Price Range (390.00-288.00).

SLAUGHTER BULLS: Yield Grade 1-2 1280-2590 lbs. 178.00-195.00; high dressing 200.00-210.00; low dressing 161.00-171.00

SLAUGHTER COWS: Breaking and Boning (70-85% lean) 135.00-156.00, high dressing 154.00-165.00. Lean (85-90%) 114.00-137.00

BRED COWS: Scarce

COW & CALF PAIRS: Scarce

NORTHEAST MISSOURI WEEKLY SUMMARY

(Bowling Green, Kingdom City, Palmyra)

Receipts: 6,080 Week ago: 7,507 Year ago: 5,237
Compared to last week, steers under 700 lbs steady to firm, over 700 lbs firm to higher undertone. Heifers 300-450 lbs 10.00 to 20.00 higher, 450-600 lbs firm to 10.00 higher, over 600 lbs higher undertone. Slaughter cows steady to 5.00 higher.

FEEDER STEERS:
Medium and Large 1

Table with 2 columns: Weight (400-700 lbs) and Price Range (392.00-285.00).

FEEDER HEIFERS:
Medium and Large 1

Table with 2 columns: Weight (300-800 lbs) and Price Range (410.00-273.25).

SLAUGHTER BULLS: Yield Grade 1-2 1510-2615 lbs. 176.00-205.00; high dressing 207.00-225.00

SLAUGHTER COWS: Breaking and Boning, (70-85% lean) 141.00-156.00; high dressing 152.00-167.00; low dressing 128.00-143.00. Lean (85-90%) 128.00-140.00.

SLAUGHTER STEERS: Choice and Prime 2-4 223.50-225.00. Choice 2-3 215.50-225.75. Select and Choice 1-3 210.00.

SLAUGHTER HEIFERS: Choice and Prime 2-4 223.00. Choice 2-3 215.00-226.00. Select and Choice 2-3 208.00.

BRED COWS: Medium and Large 1-2 2-4 yrs 1100-1287 lbs 2nd/3rd stage 3700.00-4075.00; 5-8 yrs 1352-1475 lbs 2nd/3rd stage 2450.00-2750.00 per head

COW CALF PAIRS: Medium and Large 1-2 2-8 yrs 900-1400 lbs with baby to 300 lb calves 3950.00-4400.00; >5 yrs 1100-1500 lbs with baby to 300 lb calves 3050.00-3950.00 per pair

NORTH CENTRAL MISSOURI WEEKLY SUMMARY

(Macon, Unionville, Green City, New Cambria)

Receipts: 5,299 Week ago: 5,048 Year ago: 0
Compared to the most recent test, steers and heifers firm to as much as 20.00 higher on some light weight steers. Slaughter cows steady to firm. *Some sale barns on a bi-weekly schedule and may not have a sale each week.

FEEDER STEERS:
Medium and Large 1

Table with 2 columns: Weight (350-900 lbs) and Price Range (449.00-293.50).

FEEDER HEIFERS:
Medium and Large 1

Table with 2 columns: Weight (350-800 lbs) and Price Range (401.00-280.50).

SLAUGHTER BULLS: Yield Grade 1-2 1485-2290 lbs. 184.00-216.00; high dressing 217.00; low dressing 157.00-171.00

SLAUGHTER COWS: Breaking and Boning (70-85% lean) 130.00-157.00, high dressing 145.00-161.00. Lean (85-90%)117.00-145.00

BRED COWS: Scarce

HEIFER PAIRS: Scarce

SOUTHEAST MISSOURI WEEKLY SUMMARY

(Jackson and Farmington)

Receipts: 2,735 Week ago: 985 Year ago: 1,341
Compared to last week, steers and heifers 6.00 to 16.00 higher. Slaughter cows and bulls steady.

FEEDER STEERS:
Medium and Large 1

300-400 lbs. 440.00-530.00
400-500 lbs. 387.00-480.00
500-600 lbs. 350.00-417.00
600-700 lbs. 307.00-352.00
700-800 lbs. 265.00-287.00
Pkg 908 lbs. 269.00

FEEDER HEIFERS:
Medium and Large 1

300-400 lbs. 395.00-445.00
400-500 lbs. 347.00-420.00
500-600 lbs. 295.00-360.00
600-700 lbs. 266.00-332.00
700-800 lbs. 237.00-269.00
800-850 lbs. 245.00-255.00

SLAUGHTER BULLS: Yield Grade 1-2 1190-2445 lbs 130.00-169.50, high dressing 161.00-192.00.

SLAUGHTER COWS: Breaking and Boning (75-85% lean) 122.00-136.00; high dressing 137.00-163.00. Lean (85-90% lean) 90.00-117.00

BRED COWS: Medium and Large 2 2-8 yrs 1000-1395 lbs 1st to 3rd stage 1850.00-3000.00; >8 yrs 1065-1262 lbs 2nd stage 1550.00-2000.00 per head

COW & CALF PAIRS: Medium and Large 2 2-8 yrs 1100-1450 lbs with <150 lb calves 3450.00-3850.00 per pair

EAST CENTRAL MISSOURI WEEKLY SUMMARY

(Cuba, Vienna)

Receipts: 2,964 Week Ago: 3,148 Year ago: 3,121
Compared to last week, steers and heifers steady to 15.00 higher. Slaughter cows 1.00 to 6.00 higher.

FEEDER STEERS:
Medium and Large 1

300-400 lbs. 440.00-520.00
400-500 lbs. 400.00-476.00
500-600 lbs. 360.00-435.00
600-700 lbs. 330.00-397.00
700-750 lbs. 310.00-332.50
19 hd 929 lbs. 256.25

FEEDER HEIFERS:
Medium and Large 1

300-400 lbs. 390.00-467.50
400-500 lbs. 350.00-437.00
500-600 lbs. 318.00-380.00
600-700 lbs. 291.00-315.00

SLAUGHTER BULLS: Yield Grade 1-2 1270-2545 lbs 167.50-195.00; high dressing couple 198.00-206.00; low dressing few 128.00-155.00.

SLAUGHTER COWS: Breaking and Boning, (70-85% lean) 140.00-153.50; high dressing 147.00-161.00. Lean (85-90%) 125.00-145.00

BRED COWS: Medium and Large 1-2 2-8 yrs 1105-1460 lbs 2nd/3rd stage 2400.00-3025.00, 1st stage 2150.00-2375.00; >5 yrs 1147-1303 lbs 2nd/3rd stage 2075.00-2825.00; >8 yrs 1072-1383 lbs 2nd/3rd stage 1800.00-2300.00 per head

COW & CALF PAIRS: Medium and Large 1-2 >8 yrs 1070 lbs with 150-300 lb calves 2575.00; 5-8 yrs 1175 lbs rebred 1st stage with >300 lb calves 3800.00 per pair

NORTHWEST MISSOURI WEEKLY SUMMARY

(Tina)

Receipts: 1,822 Week Ago: 1,996 Year Ago: 1,650
Compared to last week, steers and heifers 2.00 to 10.00 higher, spots 20.00 higher. Slaughter cows and bulls 2.00 to 8.00 higher.

FEEDER STEERS:
Medium and Large 1

300-400 lbs. 450.00-472.50
400-500 lbs. 430.00-450.00
500-600 lbs. 378.00-427.50
600-700 lbs. 331.00-391.00
122 hd 897 lbs. 290.25
62 hd 904 lbs. 289.25

FEEDER HEIFERS:
Medium and Large 1

350-400 lbs. 450.00-457.50
400-500 lbs. 376.00-435.00
500-600 lbs. 310.00-365.00
76 hd 665 lbs. 312.50
75 hd 709 lbs. 310.00
Pkg 750 lbs. 293.00

SLAUGHTER BULLS: Yield Grade 1-2 1690-1880 lbs 180.00-191.50

SLAUGHTER COWS: Breaking and Boning, (70-85% lean) 148.00-165.50; high dressing 158.00-161.00. Lean (85-90%) 133.00-144.00.

BRED COWS: Scarce

COW/CALF PAIRS: Scarce

AFTERNOON NATIONAL SLAUGHTER CATTLE REVIEW

So far for Friday, negotiated cash trade in the Southern Plains was limited on good demand. In Nebraska and the Western Cornbelt, negotiated cash trade was light on good demand. The last market test in the Texas Panhandle was on Wednesday with live purchases at 219.00. The last market test in Kansas was on Tuesday with live purchases from 218.00-220.00. The last market test in Nebraska was on Thursday with live purchases from 225.00-228.00 and dressed purchases mostly at 355.00. The last live market test in the Western Cornbelt was on Thursday from 225.00- 228.00 with a few dressed purchases at 355.00.

Negotiated Cash Sales:

Confirmed:	6,427	Week Ago:	1,975	Year Ago:	41,292
Week to date:	80,312	Week Ago:	95,998	Year Ago:	61,268

<u>Live Basis</u>	<u>Steers</u>	<u>Heifers</u>
Over 80% Choice	225.00-228.00, avg 227.83	219.00-228.00, avg 225.89
65-80% Choice	-	219.00
35-65% Choice	-	-
0-35% Choice	-	-
Total All Grades	225.00-228.00, avg 227.83	219.00-228.0, avg 224.36
<u>Dressed Basis</u>		
Over 80% Choice	355.00	-
65-80% Choice	-	-
35-65% Choice	-	-
0-35% Choice	-	-
Total All Grades	355.00	-

<u>All Beef Type Steers/Heifers</u>	<u>Head</u>	<u>Avg Wt</u>	<u>Price Range</u>	<u>Wtd Avg</u>
Live FOB	5,283	1473.7	219.00-230.00	226.64
Live Del	453	1528.4	228.00-230.00	229.83
Dressed Del	611	923.5	355.00-360.00	355.70
Dressed FOB	-	-	-	-

WEEKLY COMMODITY FUTURES TRENDS

Compared to last week, Live Cattle 2.48 to 3.57 higher, Lean Hogs nearby 0.28 to 2.58 lower, Aug and Oct steady to 0.50 higher, Feeder Cattle 3.02 to 3.55 higher.

Daily Futures Closes

	Mon.	Tues.	Wed.	Thu.	Fri.
Cattle					
Jun	213.65	213.67	212.52	214.25	214.67
Aug	209.07	209.37	208.37	210.00	209.57
Oct	206.40	206.87	206.17	207.47	206.95
Dec	205.77	206.22	205.97	207.27	206.80
Feb	205.85	206.20	206.12	207.55	207.02
Lean Hogs					
May	92.25	91.55	91.15	90.65	90.37
Jun	99.00	97.57	97.32	97.17	97.57
Jul	100.40	99.40	99.47	100.25	100.42
Aug	98.92	98.12	97.92	98.52	99.12
Oct	83.97	83.95	83.82	84.07	84.35
Fdr Cattle					
May	296.07	295.70	294.45	297.47	297.97
Aug	298.90	299.20	298.60	301.45	300.30
Sep	297.55	297.87	297.32	300.22	299.02
Oct	295.45	295.72	295.30	298.30	296.90
Nov	292.92	293.20	292.77	295.80	294.17
Milk					
May	18.64	18.76	18.74	18.56	18.42
Jun	18.34	18.60	19.02	18.75	18.31
Jul	18.45	18.73	19.18	18.96	18.63

WEEKLY COMMODITY GRAIN FUTURES TRENDS

Compared to last week, Soybeans steady to 0.07 lower, Wheat 0.20 to 0.22 lower, Corn 0.07 to 0.20 lower, KC Wheat 0.22 to 0.24 lower, Soybean Meal 1.60 to 3.00 lower.

Daily Grain Futures Closes

	Mon.	Tues.	Wed.	Thu.	Fri.
Soybeans					
May	1038	1034 3/4	1030 1/2	1036 3/4	1044
Jul	1045 1/2	1041 1/4	1039 1/4	1045	1051 3/4
Aug	1040 1/4	1035 3/4	1035 1/2	1040	1047 1/4
Sep	1018 3/4	1015 1/2	1017 1/4	1020 1/2	1026 3/4
Nov	1022 1/4	1019 1/4	1022	1025	1030 1/2
Wheat					
May	514 1/4	519	518	513	505 1/2
Jul	531 1/4	536	534 1/4	529 1/4	521 3/4
Sep	545 3/4	550	549	544	536 1/2
Dec	568	572 1/4	571 1/4	566	558 1/4
Mar	587	590 1/2	590 1/4	584 3/4	577
Corn					
May	446 1/2	447 1/2	441	439	441 1/2
Jul	454 1/4	455 1/2	449 1/4	447 1/2	449 3/4
Sep	432 3/4	430 1/4	429 1/2	426 1/2	429 1/4
Dec	443	441 1/4	440 3/4	438 3/4	442
Mar	457 1/2	455	454 3/4	453 1/4	457
KC Wheat					
May	520	524 3/4	517 1/2	513 3/4	506 1/2
Jul	532 3/4	538	529 1/2	524 3/4	517 1/2
Sep	547 1/4	551 1/2	543 3/4	538 3/4	531 3/4
Dec	570 1/2	574	566 3/4	561	554 1/4
Mar	589 3/4	593	586 1/2	580 3/4	573 3/4
SB Meal					
May	288.70	286.10	288.00	287.80	287.20
Jul	295.50	293.00	295.00	294.70	294.10
Aug	298.00	295.70	297.80	297.50	297.20
Sep	299.20	297.20	299.10	298.80	298.80
Oct	299.40	297.90	299.90	299.20	299.30

MISSOURI GRAIN WEEKLY TRENDS

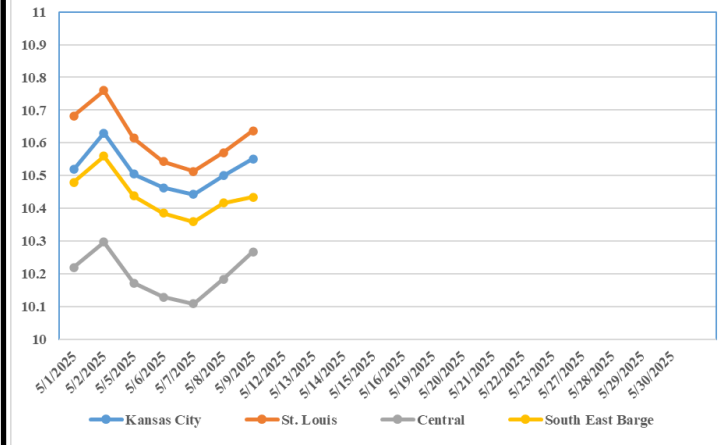
Compared to last week, Soybeans 0.06 to 0.12 lower, Wheat 0.13 to 0.21 lower, Corn 0.16 to 0.22 lower, Sorghum no trend due to lack of bids.

Area	#1 Soybeans	#2 Soft Wheat	#2 Corn	#2 Grain Sorghum
Kansas City				
Friday**	10.38-10.88	5.23	4.39-4.71	3.89
Monday	10.26-10.76	5.11	4.24-4.56	3.74
Tuesday	10.21-10.71	5.16	4.26-4.61	3.76
Wednesday	10.19-10.69	5.14	4.19-4.54	3.69
Thursday	10.25-10.75	5.09	4.18-4.53	3.68
Friday	10.32-10.77	5.02	4.20-4.55	3.70
St. Louis				
Friday**	10.76	5.25-5.33	4.88	---
Monday	10.62	5.16-5.21	4.72	---
Tuesday	10.54	5.21-5.26	4.74	---
Wednesday	10.51	5.24-5.29	4.67	---
Thursday	10.57	5.19-5.24	4.64	---
Friday	10.64	5.12-5.17	4.66	---
Central				
Friday**	10.23-10.33	5.03	4.34-4.39	---
Monday	10.11-10.21	4.91	4.19-4.24	---
Tuesday	10.06-10.16	4.96	4.21-4.26	---
Wednesday	10.04-10.14	4.94	4.14-4.19	---
Thursday	10.10-10.25	4.89	4.13-4.20	---
Friday	10.17-10.32	4.82	4.15-4.22	---
S.E. MO				
Friday**	10.43-10.72	---	4.79-4.84	---
Monday	10.31-10.61	---	4.64-4.69	---
Tuesday	10.26-10.53	---	4.66-4.71	---
Wednesday	10.24-10.49	---	4.59-4.64	---
Thursday	10.30-10.55	---	4.59-4.63	---
Friday	10.22-10.62	---	4.60-4.62	---

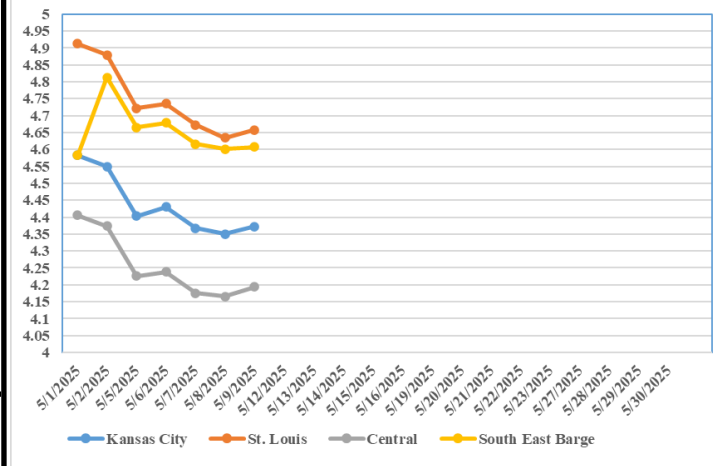
(PRICES PER BUSHEL) *NEW CROP **PREVIOUS WEEK'S PRICES
*Bids calculated using Kansas City, St. Louis, and St. Joseph bids

MONTHLY GRAIN CROP

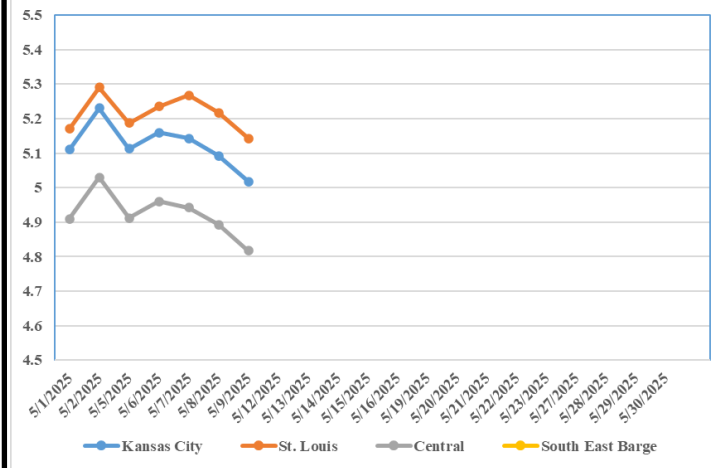
May 2025 Soybean Bids



May 2025 Corn Bids



May 2025 Wheat Bids



*Axis value ranges may be updated to reflect data points.
Only dates in which markets are trading and only current cash bids are represented.

**WHOLESALE FEEDSTUFFS PRICES
(DOLLARS PER TON-BULK BASIS)**

Area	Cottonseed Meal 41%	Soybean Meal 46.5-48%	Corn Gluten Pellets 21%	Wheat Middlings
Kansas City	300.00	273.75	196.00	108.33
St. Louis	295.00	n/a	190.50	102.50

MISSOURI CROP PROGRESS AND CONDITION 5/5/25

There were 2.5 days suitable for fieldwork in the week ending May 4, 2025. Statewide, the average temperature was 61.4 degrees, 2.8 degrees above normal. Precipitation averaged 1.51 inches, 0.39 inches above normal. Topsoil moisture supply was rated 3 percent short, 70 percent adequate, and 27 percent surplus. Subsoil moisture supply was rated 1 percent very short, 3 percent short, 80 percent adequate, and 16 percent surplus. Corn planted reached 54 percent, compared to the 5-year average of 57 percent. Corn emerged reached 31 percent, compared to the 5-year average of 27 percent. Soybeans planted reached 28 percent, compared to the 5-year average of 20 percent. Soybeans emerged reached 9 percent, compared to the 5-year average of 7 percent. Cotton planted reached 17 percent, compared to the 5-year average of 15 percent. Cotton emerged reached 1 percent. Rice planted reached 59 percent, compared to the 5-year average of 56 percent. Rice emerged reached 40 percent, compared to the 5-year average of 33 percent. Winter wheat headed reached 48 percent, compared to the 5-year average of 41 percent. Winter wheat condition was rated 4 percent poor, 20 percent fair, 67 percent good, and 9 percent excellent.

	Week Ending			
	5/4/25	4/27/25	5/4/24	5 yr avg
Corn Planted	54	47	66	57
Corn Emerged	31	15	46	27
Soybeans Planted	28	25	29	20
Soybeans Emerged	9	4	16	7
Cotton Planted	17	5	31	15
Cotton Emerged	1	-	6	-
Rice Planted	59	44	76	56
Rice Emerged	40	11	39	33
Winter Wheat Headed	48	26	72	41
Alfalfa hay 1st cutting	1	-	2	1

MISSOURI WEEKLY HAY SUMMARY 5/8/2025

Hay season got started for a few this past week. A bit of Alfalfa and some high moisture hay was wrapped. Harvest has been limited thus far however and producers have been watching quality decline as they wait to get into fields. Conventional grass hay is still a few weeks away and many producers historically sacrifice some quality for higher yields as most grass hay baling doesn't really get underway till around the Memorial Day holiday. Pasture conditions across the state are mostly good to excellent. Currently most hay demand is coming from equine interest. Hay prices are steady, supply and demand are light to moderate. The Missouri Department of Agriculture has a hay directory at <https://apps.mda.mo.gov/haydirectory> or visit the University of Missouri Extension feed stuff finder at <https://feedstufffinder.org>
 Alfalfa - Supreme 250.00-300.00, small square 10.00-14.00 per bale
 Alfalfa - Premium 175.00-225.00
 Alfalfa - Good 150.00-175.00, small square 6.00-10.00 per bale
 Alfalfa - Fair 125.00-150.00
 Mixed grass - Good/Premium 125.00-200.00
 Mixed grass-Fair/Good 80.00-125.00, small square 3.50-8.00 per bale
 Mixed grass - Fair 25.00-50.00 per large round bale
 Wheat straw - 4.00-7.00 per small square bale
 Corn Stalks - 10.00-25.00 per large round bale

Please Note: The above volumes (tonnage, acres, and bales) listed are for confirmed trades only, it does not include estimated volume (tonnage) for bids or offers to the trade. List your hay for sale at: [Hay Listing Online Form](#). Explanation of Hay Quality Guidelines: [Hay Quality Designation Guidelines](#). Glossary of Terms: [Livestock, Poultry, & Grain Hay Terms](#)

MISSOURI WEEKLY SHEEP/GOAT AUCTION SUMMARY

Receipts: 4,720 Week Ago: 1,534 Last Year: 3,044
 SHEEP: Feeder lambs Small and Medium 1-2 hair 20-50 lbs 250.00-325.00, thin 240.00-250.00. Small and Medium 2 hair pkg 39 lbs 255.00. Slaughter lambs w/s Choice and Prime 1-3 60-90 lbs 255.00-285.00. Choice and Prime 1-3 hair 50-100 lbs 250.00-285.00. Choice 1-2 hair pkg 60 lbs 245.00; pkg 78 lbs 260.00. Choice 1-3 hair 50-95 lbs 210.00-260.00.
 Slaughter ewes Utility and Good 1-2 18 hd 91 lbs 102.50. Utility and Good 1-3 pkg 158 lbs 135.00. Good 2-3 hair 100-115 lbs 135.00-150.00. Good 2-3 hair 90-125 lbs 135.00-145.00. Utility and Good 1-3 hair 100-150 lbs 100.00-132.50. Utility and Good 1-3 hair 85-125 lbs 115.00-140.00/hd. Cull and Utility 1-2 hair pkg 90 lbs 75.00; 105-125 lbs 80.00-130.00. Bucks 1-2 pkg 143 lbs 145.00. Bucks 1-2 hair 100-145 lbs 170.00-245.00, yearlings 225.00-260.00; 150-185 lbs 125.00-205.00.
 Replacement ewes Small and Medium 1-2 hair 2-6 yrs 95-96 lbs exp 140.00-157.50. Small and Medium 1-2 1-4 yrs 95-125 lbs exp 145.00-180.00/hd.
 Families Small and Medium 1-2 2-4 yrs 100-125 lbs 3exp with <20 to 40 lb lambs 230.00-275.00; 4-6 yrs 90-130 lbs exp with <20 to 40 lb lambs 160.00-210.00.
 GOATS: Feeder kids Selection 1 30-50 lbs 350.00-420.00. Selection 2 20-50 lbs 250.00-355.00. Selection 2-3 25-45 lbs 205.00-235.00. Selection 3 25-40 lbs 210.00-225.00, pygmies 230.00.
 Slaughter kids Selection 1 50-60 lbs 400.00-465.00; 65-70 lbs 360.00-440.00. Selection 2 50-60 lbs 330.00-385.00; 60-70 lbs 275.00-350.00; 70-80 lbs 250.00-300.00.
 Slaughter nannies Selection 1-2 55-135 lbs 150.00-225.00. Selection 1-2 75-105 lbs 112.50-140.00/hd. Slaughter bucks Selection 1-2 70-190 lbs 225.00-290.00. Wethers Selection 1-2 80-95 lbs 300.00-370.00; 110-165 lbs 285.00-350.00.
 Replacement nannies Selection 1-2 1-2 yrs 72 lbs exp 210.00; 2-4 yrs 100-105 lbs exp 195.00-200.00. Selection 1-2 1-2 yrs 75-85 lbs exp 200.00-250.00/hd; 2-4 yrs 95 lbs exp 210.00/hd.
 Families Selection 1-2 4-6 yrs 85-95 lbs exp with <20 lb kids 200.00-210.00/fam.
 Replacement bucks Selection 1 <1 yrs 138 lbs 295.00.

Explanatory Notes: Stage - Represents estimated lambing/kidding period (Open, Exp=exposed, Bred, Fall = Sep-Nov, Win = Dec-Feb, Spr = Mar-May, Sum=Jun-Aug; w/s = woolled and shorn; /hd= per head; /fam=per family
 All price CWT unless otherwise noted.

MISSOURI DROUGHT MONITOR

Date	None	D0	D1	D2	D3	D4
5/6/25	81.37	18.63	0	0	0	0
4/29/25	88.10	11.90	0	0	0	0
5/7/24	69.49	18.41	12.05	0.05	0	0

Reflects percentage of Missouri impacted by drought. D0 Abnormally Dry; D1 Moderate Drought; D2 Severe Drought; D3 Extreme Drought; D4 Exceptional Drought

NATIONAL DIRECT DELIVERED FEEDER PIG REPORT

5/9/25 Receipts: 144,370 Week ago: 121,920 Year Ago: 141,891
 Early weaned pigs 2.00 to 3.00 higher. Feeder pigs generally steady.
 Cash 100,337 head 35.00-58.00, weighted average 49.04
 Formula 32,033 head 43.78-55.03, weighted average 49.14
 Feeder pigs 40 pounds basis: Cash 12,000 head 74.00-83.00, weighted average 79.28

NATIONAL DAILY DIRECT PRIOR DAY HOG REPORTS 5/9/25

BARROWS AND GILTS (Carcass Basis): 3,276 head
 Base Carcass Price 85.00-97.25, weighted average 93.09

SOWS (Live Basis): 6,333 head
 300-500 lbs. 25.00-75.00
 Over 500 lbs. 43.50-75.00

MISSOURI WEEKLY DIRECT SLAUGHTER CATTLE REPORT 5/9/25

Weekly Receipts: 800 Week ago: 760 Year ago: 360
 Trading as of Friday morning, flat dressed price 5.00 to 7.00 higher and grid dressed sales 5.00 higher.

LIVE STEERS & HEIFERS: DRESSED STEERS & HEIFERS:
 No sales reported 8 loads Thu 355.00

GRADE AND EIGHT (Grid): 12 loads Thu 362.00

Click here for the current [National Crop Progress](#)
 Click here for the current [Missouri Crop Progress](#)
 The current hay directory can be found at: [Hay Directory](#).