

Weekly Market Summary

Published by:
Missouri Department of Agriculture
Ag Business Development Division
Market News Program



Chris Chinn, Director
Jill Wood, Division Director
Tony Hancock, Editor
<http://www.ams.usda.gov/marketnews.htm>
<http://www.ams.usda.gov/marketnews.htm>

Michael Kehoe, Governor

Volume XLV, Number 20 ♦ P.O. Box 630, Jefferson City, MO 65102 ♦ (573) 751-4211 ♦ Mon, May 19, 2025

MISSOURI WEEKLY FEEDER CATTLE WEIGHTED AVERAGE REPORT

Feeder Cattle Receipts: 32,482 Week ago: 35,901 Year ago: 31,869
Steers and Heifers Medium and Large 1—Weighted average weights and prices

STEERS: Medium and Large 1

279 lbs.	516.49	471 lbs.	440.89	669 lbs.	345.85	875 lbs.	294.15
328 lbs.	503.83	525 lbs.	408.08	724 lbs.	322.40	920 lbs.	283.68
381 lbs.	473.97	572 lbs.	393.66	772 lbs.	305.76	957 lbs.	269.00
426 lbs.	459.93	621 lbs.	371.47	812 lbs.	301.20	1023 lbs.	256.26

HEIFERS: Medium and Large 1

286 lbs.	449.47	475 lbs.	382.13	673 lbs.	320.35	860 lbs.	253.71
331 lbs.	455.19	526 lbs.	359.79	726 lbs.	308.12	927 lbs.	250.40
372 lbs.	431.93	576 lbs.	343.23	766 lbs.	292.20	953 lbs.	252.00
424 lbs.	412.97	624 lbs.	325.68	828 lbs.	274.25	1121 lbs.	222.00

MISSOURI STEER (HEIFER) STOCKER FORMULA 5/19/2025

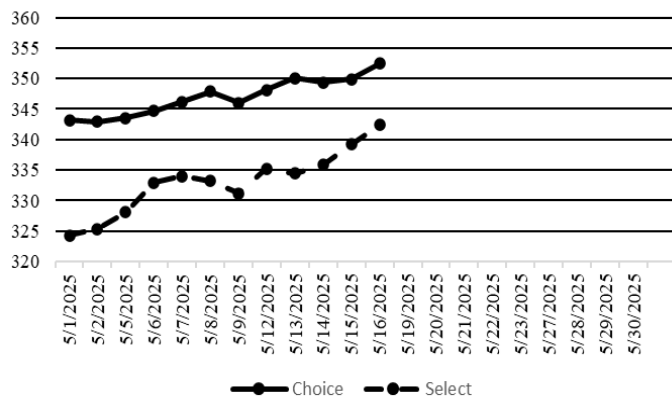
Monday's Missouri Stocker formula consists of 7632 (7122) head with a weighted average weight of 538.23 (526.85) lbs. and a price value of 394.34 (352.80), 5.16 higher (2.46 higher) than a week ago.

This a rolling seven day calculated weighted value which combines all Feeder Steers reported by MDA/USDA Market News Service weighing from 400-649 lbs. in the Medium and Large 1 and Medium and Large 1-2 frame and muscle classifications, including all comment cattle except Brahman X. Heifer values are in parentheses.

NATIONAL BOXED BEEF CUTOUT VALUES

DATE	CHOICE	SELECT	TOTAL LOADS
5/12	348.14	335.23	115
5/13	350.10	334.47	135
5/14	349.36	335.85	129
5/15	349.90	339.18	77
5/16	352.49	342.39	101
5 Day Simple Average	350.00	337.42	

Boxed Beef Cuts May 2025

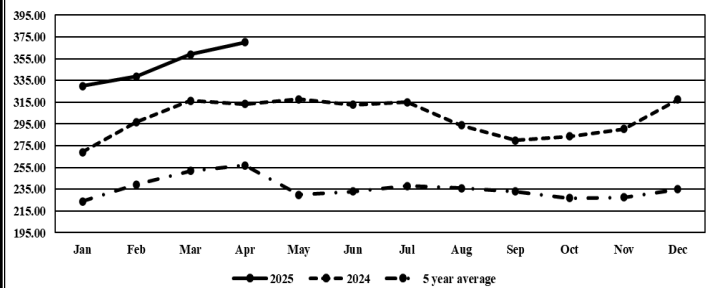


*Axis value ranges may be updated to reflect data points.

WEEKLY LIVESTOCK SLAUGHTER 5/17/25

	CATTLE	HOGS	SHEEP
Week to Date:	564,000	2,389,000	36,000
Last Week:	557,000	2,399,000	35,000
Last Year:	587,010	2,374,671	36,217

Missouri Stocker Formula - Steers



*Graph is updated the first Monday of each month. Axis value ranges may be updated to reflect data points.

MISSOURI WEEKLY CATTLE AUCTION SUMMARY

Total Receipts: 39,366 Week Ago: 41,736 Year Ago: 38,550

Compared to the light test from last week, feeder steers and heifers sold steady to 5.00 higher. The supply of feeders was moderate with the majority of the offering being calves under 600 lbs. Markets began the week with the continued upward climb. Mid-week futures made a big price correction, but it was mostly ignored by cash markets at the local auction barns. Hay harvest got under way with a lot of wrapping occurring. Pasture conditions are rated mostly in good condition, although the northern third of the state is now all showing on the latest drought monitor. Stick out sales this week included 89 head of 450 lb. steers at Callaway Livestock Center which sold for 454.50 and 20 head of 506 lb. steers for 439.00. South Central Regional Stockyards sold 29 head of 596 lb. steers for 410.50. Joplin Regional Stockyards sold 22 head of 608 lb. steers for 395.00. Windsor Livestock Auction sold a full load of 708 lb. steers for 329.00. Lolli Brothers Livestock Market sold 50 head of 902 lb. steers for 297.50. On the heifer side of the market, Joplin Regional Stockyards sold 99 head of 525 lb. heifers for 371.00. Windsor Livestock Auction sold 129 head of 599 lb. heifers for 364.00. Three loads of 734-747 lb. heifers at Lolli Brothers Livestock Market all sold at 315.75. Boxed beef cutouts continued the upward climb this week. Choice closed on Friday at 352.49, up 6.52 and Select closed at 342.39, up 11.22 compared to last Friday. Negotiated feedlot sales developed with the bulk of the trade reported on Thursday. As of the 2:00 cutoff time for Friday afternoons report nearly 76K head was reported for the week. Live prices were Steady to 4.00 higher and dressed sales were 3.00 higher. Live sales were reported mostly at 220.00 in the south and 228.00-229.00 in the north, dressed sales were reported mostly at 358.00. The Missouri Stocker formula consists of 7632 head with a weighted average weight of 538.23 lbs. and a price value of 394.34, 5.16 higher than last week and once again a new record high.

The Weekly Market Summary, as well as historical summaries, are available on our website <https://agmarketnews.mo.gov/summaries>
Market News Hotline: 1-573-522-9244
Check out the latest updates on our YouTube Channel: [MDA Market News](https://www.youtube.com/channel/UCM4M4M4M4M4M4M4M4M4M4M4)

SOUTHWEST MISSOURI WEEKLY SUMMARY

(Joplin and Springfield)

Receipts: 13,028 Week ago: 11,226 Year Ago: 10,308
Compared to last week, early week feeders under 625 lbs 4.00 to 15.00 higher, spots 25.00 higher, steers over 625 lbs 4.00 to 15.00 higher, heifers over 625 lbs 4.00 lower to 5.00 higher. Late week feeders unevenly steady. Slaughter cows and bulls 2.00 lower to 2.00 higher.

FEEDER STEERS:

Medium and Large 1

300-400 lbs.	450.00-560.00
400-500 lbs.	410.00-490.00
500-600 lbs.	375.00-450.00
600-700 lbs.	331.00-405.00
700-800 lbs.	295.00-335.00
800-900 lbs.	285.00-306.00
900-1000 lbs.	268.50-287.00
1000-1050 lbs.	254.50-259.00

FEEDER HEIFERS:

Medium and Large 1

300-400 lbs.	415.00-470.00
400-500 lbs.	365.00-445.00
500-600 lbs.	321.00-385.00
600-700 lbs.	295.00-330.00
700-800 lbs.	272.00-317.00
800-900 lbs.	253.50-276.25
900-1000 lbs.	252.00-255.00

FEEDER HOLSTEIN STEERS

Large 3

Pkg 244 lbs.	265.00
350-400 lbs.	250.00-270.00
450-500 lbs.	257.50-275.00
500-600 lbs.	250.00-270.00
600-700 lbs.	238.00-271.75
700-750 lbs.	240.00-260.75
800-900 lbs.	220.00-230.00
Pkg 995 lbs.	217.00

BRED COWS: Medium and Large 1 2-8 yrs 1140-1390 lbs 2nd/3rd stage 2400.00-3100.00. Medium and Large 1-2 2-8 yrs 993-1625 lbs 2nd/3rd stage 2100.00-3300.00, 1st stage 1900.00-2800.00 per head

BRED HEIFERS: Medium and Large 1-2 <2 yrs 858-1225 lbs 2nd/3rd stage 2500.00-3000.00, 1st stage 2200.00-2300.00; 2-4 yrs 870-1350 lbs 2nd/3rd stage 2700.00-3300.00, 1st stage 2000.00-2700.00 per head

SLAUGHTER COWS: Breaking and Boning (70-85% lean) 137.50-157.50; high dressing 151.00-165.00; low dressing 125.00-147.00. Lean (85-90%) 123.00-147.50.

SLAUGHTER BULLS: Yield Grade 1-2 1165-2235 lbs. 142.00-189.00; high dressing 184.00-214.00; low dressing 152.00-169.00

COW & CALF PAIRS: Medium and Large 1 2-4 yrs 985 lbs with 150-300 lb calves 4100.00. Medium and Large 1-2 2-8 yrs 1040-1300 lbs with <150 to 300 lb calves 3000.00-4000.00; 2-8 yrs 1150-1400 lbs rebred 1st to 3rd stage with 150 to >300 lb calves 3200.00-4400.00 per pair

SOUTH CENTRAL MISSOURI WEEKLY SUMMARY

(West Plains, Phillipsburg)

Receipts: 5,664 Week ago: 5,229 Year Ago: 4,666
Compared to last week, steers and heifers steady to 5.00 higher, except some late week steady to 5.00 lower. Slaughter cows and bulls steady to 3.00 higher.

FEEDER STEERS:

Medium and Large 1

300-400 lbs.	465.00-530.00
400-500 lbs.	402.00-480.00
500-600 lbs.	376.00-416.00
600-700 lbs.	317.00-362.00
700-800 lbs.	312.00-313.00
800-900 lbs.	280.00-291.00
10 hd 984 lbs.	260.00

FEEDER HEIFERS:

Medium and Large 1

300-400 lbs.	420.00-455.00
400-500 lbs.	368.00-432.50
500-600 lbs.	320.00-357.50
600-500 lbs.	302.50-329.50
73 hd 713 lbs.	290.50
34 hd 808 lbs.	273.00

FEEDER HOLSTEIN STEERS:

Large 3

Scarce Scarce

SLAUGHTER COWS: Breaking and Boning (70-85% lean) 132.50-155.00; high dressing 149.00-167.50; low dressing 127.00-143.00. Lean (85-90%) 127.50-142.50

SLAUGHTER BULLS: Yield Grade 1-2 1290-2255 lbs. 165.00-186.00; high dressing 185.50-208.00; low dressing 147.00-161.00.

BRED COWS: Medium and Large 1-2 2-8 yrs 1075-1450 lbs 2nd/3rd stage 2200.00-3200.00, 1st stage 2100.00-2300.00; >8 yrs 1245-1247 lbs 2nd/3rd stage 2125.00-2500.00 per head

COW & CALF PAIRS: Medium and Large 1 2-8 yrs 1173-1391 lbs with 150-300 lb calves 3950.00-4700.00, 2-8yrs 1276-1300 lbs rebred 1st stage with 150-300 lb calves 4850.00 per pair. Medium and Large 1-2 2-8 yrs 1000-1343 lbs with 150-300 lb calves 2800.00-3650.00 per pair

WEST CENTRAL MISSOURI WEEKLY SUMMARY

(Kingsville, Windsor, Butler)

Receipts: 6,233 Week ago: 6,381 Year ago: 5,860
Compared to last week, steers and heifers mostly steady, with spots 5.00 to 10.00 higher. Slaughter cows steady to 4.00 higher.

FEEDER STEERS:

Medium and Large 1

300-400 lbs.	435.00-497.50
400-500 lbs.	399.00-489.00
500-600 lbs.	370.00-430.00
600-700 lbs.	337.00-385.00
700-750 lbs.	301.00-336.00
800-900 lbs.	298.50-307.50

FEEDER HEIFERS:

Medium and Large 1

300-400 lbs.	395.00-510.00
400-500 lbs.	342.00-446.00
500-600 lbs.	331.00-388.00
600-700 lbs.	293.00-350.00
700-800 lbs.	297.00-310.00
Pkg 948 lbs.	246.00

SLAUGHTER BULLS: Yield Grade 1-2 1375-1980 lbs. 178.00-193.00; high dressing 196.00-214.00

SLAUGHTER COWS: Breaking and Boning (70-85% lean) 143.00-157.00; high dressing 147.50-177.00. Lean (85-90%) 125.00-148.00

BRED COWS: Medium and Large 1-2 2-8 yrs 990-1473 lbs 2nd/3rd stage 2150.00-3200.00; 5-8 yrs 1095-1435 lbs 2nd/3rd stage 1800.00-2725.00 per head

COW & CALF PAIRS: :Large 1-2 2-8 yrs 1400-1800 lbs with 150-300 lb calves 3500.00-4150.00 per pair

NORTHEAST MISSOURI WEEKLY SUMMARY

(Bowling Green, Kingdom City, Palmyra)

Receipts: 6,224 Week ago: 6,080 Year ago: 4,591
Compared to last week, steers 400-500 lbs 10.00-25.00 higher, 500-700 lbs 10.00-15.00 higher, over 800 lbs 3.00 to 8.00 higher. Heifers 400-450 lbs 10.00-20.00 higher, 450-600 lbs firm to 10.00 higher, 600-700 lbs higher undertone, 700-750 lbs 2.00 higher. Slaughter cows steady.

FEEDER STEERS:

Medium and Large 1

400-500 lbs.	425.00-490.00
500-600 lbs.	370.00-439.00
600-700 lbs.	334.00-380.00
700-750 lbs.	308.00-317.00
800-900 lbs.	298.00-311.75
60 hd 919 lbs.	292.50

FEEDER HEIFERS:

Medium and Large 1

300-400 lbs.	320.00-475.00
400-500 lbs.	362.00-421.00
500-600 lbs.	337.00-370.00
600-650 lbs.	320.00-337.75
68 hd 756 lbs.	307.50

SLAUGHTER BULLS: Yield Grade 1-2 1490-2335 lbs. 178.00-207.00; high dressing 191.00-215.00; few low dressing 150.00-163.00.

SLAUGHTER COWS: Breaking and Boning, (70-85% lean) 141.00-159.00; high dressing 151.00-166.00; low dressing 131.00-146.00. Lean (85-90%) 126.00-139.50.

SLAUGHTER STEERS: Choice 2-3 221.50-226.50.

SLAUGHTER HEIFERS: Choice 2-3 220.00-226.00. Select and Choice 1-3 217.00-225.00

BRED COWS: Medium and Large 1-2 2-8 yrs 1126-1266 lbs 3rd stage 3075.00-3350.00; >5 yrs 1163 lbs 2nd stage 2900.00; >8 yrs 1165-1415 lbs 3rd stage 2400.00-2450.00 per head

COW CALF PAIRS: Medium and Large 1-2 2-8 yrs 1000-1400 lbs with 150-300 lb calves 3825.00-4200.00; >5 yrs 1075-1350 lbs with 150-300 lb calves 3200.00-3650.00 per pair

NORTH CENTRAL MISSOURI WEEKLY SUMMARY

(Macon, Unionville, Green City, New Cambria)

Receipts: 2,152 Week ago: 5,299 Year ago: 6,424
Compared to last week, steers and heifers steady to firm on comparable sales. Slaughter cows steady, spots 2.00 higher.

*Some sale barns on a bi-weekly schedule and may not have a sale each week.

FEEDER STEERS:

Medium and Large 1

300-400 lbs.	505.00-522.50
400-500 lbs.	438.00-490.00
500-600 lbs.	374.00-430.00
600-700 lbs.	341.00-381.00
Pkg 730 lbs.	324.00
50 hd 902 lbs.	297.50

FEEDER HEIFERS:

Medium and Large 1

300-400 lbs.	400.00-449.00
400-500 lbs.	352.00-425.50
500-600 lbs.	325.00-353.50
650-700 lbs.	315.00-326.25
700-750 lbs.	315.75

SLAUGHTER BULLS: Yield Grade 1-2 1565-2400 lbs. couple 190.00; high dressing 209-216.00.00; low dressing 169.00-174.00

SLAUGHTER COWS: Breaking and Boning (70-85% lean) 145.00-151.00; high dressing 154.00-160.00; low dressing 130.00-140.00. Lean (85-90%) 131.00-141.00

BRED COWS: Medium and Large 1 5-8 yrs 1400 lbs 2nd stage 3450.00. Medium and Large 1-2 2-8 yrs 1150-1550 lbs 2nd/2rd stage 2750.00-3700.00 per head

COW/CALF PAIRS: Medium and Large 1-2 2-8 yrs 1025-1225 lbs few rebred with baby to 300 lb calves 3275.00-3675.00 per pair

SOUTHEAST MISSOURI WEEKLY SUMMARY

(Jackson and Farmington)

Receipts: 1,160 Week ago: 2,735 Year ago: 1,727
Compared to last week, steers and heifers uneven from 12.00 lower to 5.00 higher. Slaughter cows 2.00 lower to 3.00 higher. Slaughter bulls steady to 3.00 higher.

FEEDER STEERS: Medium and Large 1

300-400 lbs. 470.00-535.00
400-500 lbs. 410.00-475.00
500-600 lbs. 368.00-430.00
600-700 lbs. 320.00-375.00
700-800 lbs. 277.00-310.00
Pkg 805 lbs. 270.00

FEEDER HEIFERS: Medium and Large 1

300-400 lbs. 390.00-440.00
400-500 lbs. 340.00-405.00
500-600 lbs. 300.00-365.00
600-700 lbs. 282.00-310.00
700-750 lbs. 250.00-362.00
Pkg 805 lbs. 250.00

SLAUGHTER BULLS: Yield
Grade 1-2 1135-2315 lbs 145.00-
155.00; high dressing 165.00-
207.00.

SLAUGHTER COWS: Breaking
and Boning (75-85% lean) 120.00-
139.00; high dressing 137.50-
169.00. Lean (85-90% lean)
100.00-119.00

BRED COWS: Medium and Large
2 2-8 yrs 1020-1572 lbs 1st to 3rd
stage 1700.00-3050.00; >8 yrs
1135-1475 lbs 2nd/3rd stage
1650.00-2325.00 per head

COW & CALF PAIRS: Medium
and Large 2 >8 yrs 1275-1325 lbs
with <150 lb calves 2800.00-
3250.00 per pair

EAST CENTRAL MISSOURI WEEKLY SUMMARY

(Cuba, Vienna)

Receipts: 3,375 Week Ago: 2,964 Year ago: 3,105
Compared to last week, steers and heifers steady to 8.00 higher.
Slaughter cows steady to 3.00 lower.

FEEDER STEERS: Medium and Large 1

300-400 lbs. 435.00-545.00
400-500 lbs. 396.00-468.00
500-600 lbs. 370.00-410.50
600-700 lbs. 343.00-394.00
700-750 lbs. 332.00-335.00

FEEDER HEIFERS: Medium and Large 1

300-400 lbs. 385.00-470.00
400-500 lbs. 355.00-447.50
500-600 lbs. 323.00-367.00
600-700 lbs. 299.00-319.00
17 hd 772 lbs. 266.50-270.00

SLAUGHTER BULLS: Yield
Grade 1-2 1525-2195 lbs 170.00-
184.00; high dressing 186.00-
191.50; low dressing few 153.00-
157.50

SLAUGHTER COWS: Breaking
and Boning, (70-85% lean) 140.00-
153.50; high dressing 149.50-
160.00. Lean (85-90%) 128.00-
144.00

BRED COWS: Medium and
Large 1 >8 yrs 1206-1271 lbs
2nd stage 2700.00-2735.00 per
head. Medium and Large 1-2 2-8
yrs 990-1416 lbs 2nd/3rd stage
1875.00-2900.00 per head

COW & CALF PAIRS: Medium
and Large 1 2-4 yrs 1000 lbs with
150-300 lb calves 4250.00 per pair.
Medium and Large 1-2 5-8 yrs
1225 lbs with 150-300 lb calves
3525.00 per pair

NORTHWEST MISSOURI WEEKLY SUMMARY

(Tina)

Receipts: 1,530 Week Ago: 1,822 Year Ago: 1,869
Compared to last week, steers and heifers under 550 lbs steady to 10.00 higher, over 550 lbs steady. Slaughter cows and bulls steady.

FEEDER STEERS: Medium and Large 1

Pkg 388 lbs. 466.00
400-500 lbs. 430.00-468.00
500-600 lbs. 384.00-425.00
600-700 lbs. 346.00-386.00
850-900 lbs. 289.00-289.50

FEEDER HEIFERS: Medium and Large 1

350-400 lbs. 450.00-477.50
400-500 lbs. 393.00-450.00
500-600 lbs. 365.00-395.00
600-700 lbs. 310.00-325.00
700-750 lbs. 315.25-330.00

SLAUGHTER BULLS:
Yield Grade 1-2 1320-2255 lbs
171.50-183.00; couple high dress-
ing 195.00-200.00

SLAUGHTER COWS: Breaking
and Boning, (70-85% lean) 141.00-
154.50; high dressing 150.00-
159.00. Lean (85-90%) 121.00-
137.00.

BRED COWS: Scarce

COW/CALF PAIRS: Scarce

AFTERNOON NATIONAL SLAUGHTER CATTLE REVIEW

So far for Friday, in the Southern Plains trade has been limited on good demand. In Nebraska and the Western Cornbelt, trade has been light on good demand with a few live sales at 229.00. The latest established market in the Texas Panhandle and Kansas was Thursday at 220.00. The latest established market in Nebraska was on Thursday with live purchases mostly from 228.00-229.00 with dressed purchases at 358.00. The latest established market in the Western Cornbelt was Thursday with live purchases mostly from 228.00-229.00 and a few dressed purchases at 358.00.

Negotiated Cash Sales:

Confirmed:	9,101	Week Ago:	6,427	Year Ago:	4,925
Week to date:	75,931	Week Ago:	80,312	Year Ago:	46,976

<u>Live Basis</u>	<u>Steers</u>	<u>Heifers</u>
Over 80% Choice	225.00-229.00, avg 228.91	220.00-229.00, avg 228.51
65-80% Choice	-	-
35-65% Choice	-	-
0-35% Choice	-	-
Total All Grades	225.00-229.00, avg 228.91	220.00-229.00, avg 228.51
<u>Dressed Basis</u>		
Over 80% Choice	358.00-	358.00
65-80% Choice	354.00	-
35-65% Choice	-	-
0-35% Choice	-	-
Total All Grades	354.00-358.00, avg 354.74	358.00

<u>All Beef Type</u> <u>Steers/Heifers</u>	<u>Head</u>	<u>Avg Wt</u>	<u>Price Range</u>	<u>Wtd Avg</u>
Live FOB	7,370	1408.7	220.00-229.00	228.22
Live Del	579	1472.1	223.00-230.00	227.41
Dressed Del	951	975.2	354.00-358.00	356.51
Dressed FOB	156	984.3	358.00	358.00

WEEKLY COMMODITY FUTURES TRENDS

Compared to last week, Live Cattle 2.45 to 2.98 lower, Lean Hogs 2.55 to 4.50 higher, Feeder Cattle 1.12 to 3.00 lower.

Daily Futures Closes

	Mon.	Tues.	Wed.	Thu.	Fri.
Cattle					
Jun	216.82	216.32	213.95	211.17	212.22
Aug	211.60	211.62	209.37	205.85	206.75
Oct	208.45	208.45	206.50	202.67	203.97
Dec	208.37	208.90	206.77	203.05	204.27
Feb	208.80	209.42	207.22	203.30	204.32
Lean Hogs					
May	90.72	90.97	91.00	—	—
Jun	98.30	99.50	98.85	100.70	100.32
Jul	102.47	103.20	102.45	104.12	104.17
Aug	101.32	102.12	101.65	103.35	103.62
Oct	85.40	85.92	85.82	86.67	86.90
Fdr Cattle					
May	303.10	302.82	299.57	296.17	296.85
Aug	306.37	306.00	307.97	295.82	297.60
Sep	305.10	305.05	300.97	294.62	296.27
Oct	302.80	303.00	298.97	292.52	293.90
Nov	299.82	300.30	296.45	290.17	291.32
Milk					
May	18.45	18.48	18.48	18.60	18.58
Jun	18.66	18.78	18.79	19.38	19.23
Jul	18.86	19.01	18.97	19.36	19.15

WEEKLY COMMODITY GRAIN FUTURES TRENDS

Compared to last week, Soybeans Jul and Aug 0.01 lower, Sep and Nov 0.03 to 0.05 higher, Wheat 0.02 to 0.04 higher, Corn 0.06 to 0.08 lower, KC Wheat 0.08 to 0.24 lower, Soybean Meal 0.50 to 2.20 lower, except Oct 0.70 higher..

Daily Grain Futures Closes

	Mon.	Tues.	Wed.	Thu.	Fri.
Soybeans					
May	1066	1067 1/4	1067	—	—
Jul	1071 1/4	1072 1/2	1077 3/4	1051 1/4	1050
Aug	1068 1/4	1070 1/4	1074 1/2	1047 1/4	1046 1/4
Sep	1052 1/2	1052 3/4	1055 3/4	1029 1/2	1029 1/2
Nov	1057 1/2	1059 1/2	1061 1/4	1035 1/4	1035 1/2
Wheat					
May	499	501 1/2	508 3/4	—	—
Jul	515 1/4	517 1/4	524 3/4	532 3/4	525
Sep	529 3/4	531 3/4	539	546 1/2	539
Dec	551 3/4	554	560 3/4	568	560 3/4
Mar	571	573 1/4	580	587	508 1/4
Corn					
May	440 1/4	436	438 1/2	—	—
Jul	448	442 1/2	445 1/2	448 1/2	443 1/2
Sep	432 3/4	427 3/4	427 1/4	425	421 1/2
Dec	445 1/2	441	440 1/2	438 3/4	435 1/2
Mar	459 3/4	455 3/4	455 1/4	453 1/2	450 1/4
KC Wheat					
May	498 1/4	502	509 1/4	509 1/4	509 1/4
Jul	508	511 3/4	523	528 1/4	516 1/2
Sep	522 3/4	526 1/4	537	542	530 1/2
Dec	545 3/4	549 1/4	559 1/4	564 1/2	553
Mar	566	569 3/4	579 1/4	583 3/4	573
SB Meal					
May	291.10	285.90	285.40	—	—
Jul	298.10	293.30	291.90	296.40	291.90
Aug	301.40	297.00	295.70	300.00	295.50
Sep	303.40	299.60	298.50	302.70	298.30
Oct	304.20	300.50	299.80	303.80	300.00

MISSOURI GRAIN WEEKLY TRENDS

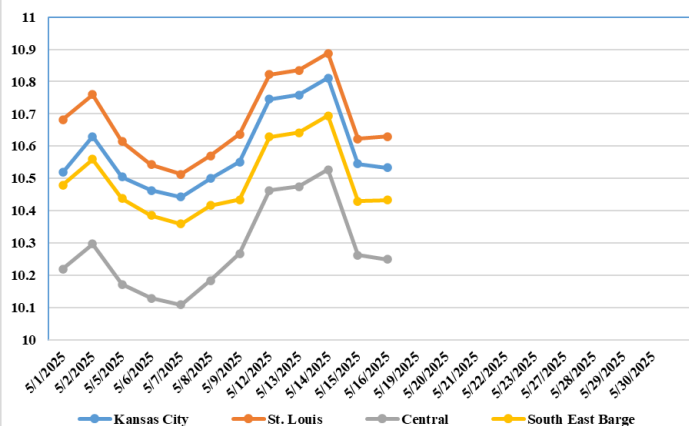
Compared to last week, Soybeans 0.01 to 0.02 lower, Wheat 0.03 to 0.18 higher, Corn 0.03 to 0.06 lower, Sorghum no trend due to lack of bids.

Area	#1 Soybeans	#2 Soft Wheat	#2 Corn	#2 Grain Sorghum
Kansas City				
Friday**	10.32-10.77	5.02	4.20-4.55	3.70
Monday	10.51-10.96	4.95	4.18-4.53	3.58
Tuesday	10.53-10.98	4.97	4.13-4.48	3.53
Wednesday	10.58-11.03	5.05	4.16-4.51	3.56
Thursday	10.31-10.76	5.18	4.19-4.54	3.59
Friday	10.30-10.75	5.20	4.14-4.52	3.54
St. Louis				
Friday**	10.64	5.12-5.17	4.66	—
Monday	10.82	5.05-5.10	4.64	—
Tuesday	10.84	5.07-5.12	4.59	—
Wednesday	10.89	5.15-5.20	4.62	—
Thursday	10.62	5.23-5.28	4.65	—
Friday	10.63	5.15-5.20	4.62	—
Central				
Friday**	10.17-10.32	4.82	4.15-4.22	—
Monday	10.36-10.51	4.75	4.13-4.20	—
Tuesday	10.38-10.53	4.77	4.08-4.15	—
Wednesday	10.43-10.58	4.85	4.11-4.18	—
Thursday	10.16-10.31	4.93	4.14-4.24	—
Friday	10.15-10.30	4.85	4.09-4.19	—
S.E. MO				
Friday**	10.22-10.62	—	4.60-4.62	—
Monday	10.41-10.81	—	4.58-4.60	—
Tuesday	10.43-10.83	—	4.51-4.55	—
Wednesday	10.48-10.88	—	4.54-4.58	—
Thursday	10.21-10.61	—	4.57-4.61	—
Friday	10.20-10.65	—	4.52-4.57	—

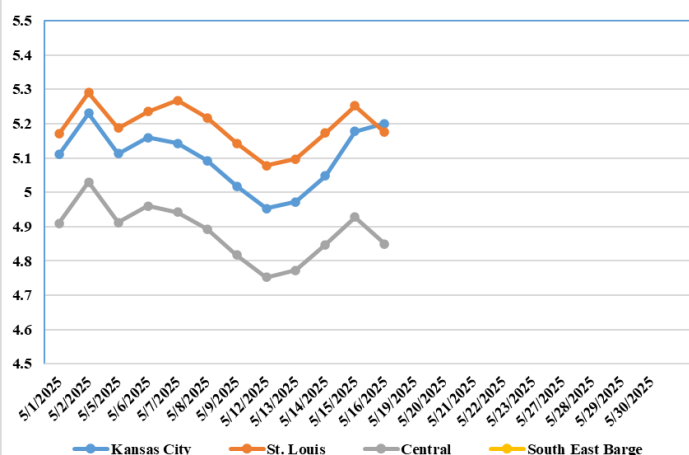
(PRICES PER BUSHEL) *NEW CROP **PREVIOUS WEEK'S PRICES
*Bids calculated using Kansas City, St. Louis, and St. Joseph bids

MONTHLY GRAIN CROP

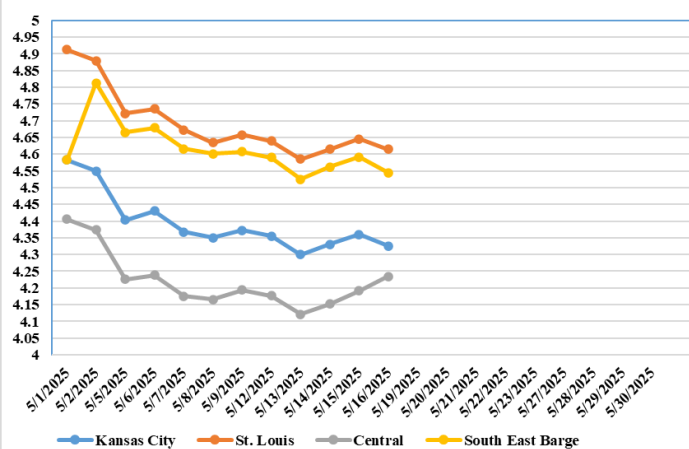
May 2025 Soybean Bids



May 2025 Wheat Bids



May 2025 Corn Bids



*Axis value ranges may be updated to reflect data points.
Only dates in which markets are trading and only current cash bids are represented.

WHOLESALE FEEDSTUFFS PRICES (DOLLARS PER TON-BULK BASIS)

Area	<u>Cottonseed Meal 41%</u>	<u>Soybean Meal 46.5-48%</u>	<u>Corn Gluten Pellets 21%</u>	<u>Wheat Middlings</u>
Kansas City	300.00	274.40	196.00	101.67
St. Louis	295.00	n/a	190.50	100.00

MISSOURI CROP PROGRESS AND CONDITION 5/12/25

There were 4.9 days suitable for fieldwork in the week ending May 11, 2025. Topsoil moisture supply was rated 1 percent very short, 8 percent short, 77 percent adequate, and 14 percent surplus. Subsoil moisture supply was rated 1 percent very short, 7 percent short, 82 percent adequate, and 10 percent surplus. Corn planted reached 68 percent, compared to the 5-year average of 71 percent. Corn emerged reached 43 percent, compared to the 5-year average of 45 percent. Soybeans planted reached 40 percent, compared to the 5-year average of 29 percent. Soybeans emerged reached 17 percent, compared to the 5-year average of 14 percent. Cotton planted reached 54 percent, compared to the 5-year average of 37 percent. Cotton emerged reached 13 percent. Rice planted reached 77 percent, compared to the 5-year average of 69 percent. Rice emerged reached 51 percent, compared to the 5-year average of 49 percent. Rice condition was rated 6 percent poor, 9 percent fair, 82 percent good, and 3 percent excellent. Winter wheat headed reached 76 percent, compared to the 5-year average of 63 percent. Winter wheat condition was rated 4 percent poor, 18 percent fair, 66 percent good, and 12 percent excellent.

	Week Ending			
	5/11/25	5/4/25	5/11/24	5 yr average
Corn Planted	68	54	71	71
Corn Emerged	43	31	53	45
Soybeans Planted	40	28	35	29
Soybeans Emerged	17	9	24	14
Winter Wheat Headed	76	48	88	63
Alfalfa hay 1st cutting	6	1	9	5
Other hay cut	3	-	6	3

WORLD AG SUPPLY AND DEMAND ESTIMATES

The **2025/26 outlook for U.S. soybeans** shows slightly lower supplies, higher crush, reduced exports, and lower ending stocks compared with 2024/25. The soybean crop is projected lower at 4.34 billion bushels with trend yield and lower area. With higher beginning stocks but lower imports and production, soybean supplies are down less than 1 percent from 2024/25. The **2025/26 U.S. corn outlook** is for record supplies and total use, and higher ending stocks. The corn crop is projected at 15.8 billion bushels, up 6 percent from a year ago on increases to both area and yield. Planted area of 95.3 million acres if realized would be the highest in over a decade. The yield projection of 181.0 bushels per acre is based on a weather-adjusted trend assuming normal planting progress and summer growing season weather. With smaller beginning stocks partially offsetting the increase in production, total corn supplies are forecast at 17.3 billion bushels. The **2025/26 U.S. wheat outlook** is for increased supplies, modestly higher domestic use, reduced exports, and higher stocks. Supplies are projected up 2 percent from 2024/25 as higher beginning stocks more than offset lower production. All wheat production is projected at 1,921 million bushels, down 3 percent from last year on lower harvested acreage. The all wheat yield is projected at 51.6 bushels per acre, up 0.4 bushels from last year. The first 2025 NASS survey-based winter wheat production forecast of 1,382 million bushels is up 2 percent from 2024 with Hard Red Winter and White accounting for most of the increase. Total 2025/26 domestic use is marginally higher, mostly on food use, which is projected at a record 977 million bushels. Projected 2025/26 ending stocks are 10 percent above last year at 923 million bushels, the highest level in six years.

MISSOURI WEEKLY HAY SUMMARY 5/15/2025

Several producers finally got to the hay fields this week, baling Alfalfa and getting some wheat, rye or the like wrapped. Those that produce some grain crops made good progress planting if they hadn't already gotten crops in. Pasture conditions across the state are mostly good to excellent. Although pastures are lush and green there is beginning to be some concern especially in the Northern third of the state as the area showing on the drought monitor slowly grows each week. Twenty-two percent of the state is currently listed with some areas creeping into D1 status now. Currently most hay demand is coming from equine interest. Hay prices are steady, supply and demand are light to moderate. The Missouri Department of Agriculture has a hay directory at <https://apps.mda.mo.gov/haydirectory> or visit the University of Missouri Extension feed stuff finder at <https://feedstufffinder.org>
Alfalfa - Supreme 250.00-300.00, small square 10.00-17.00 per bale
Alfalfa - Premium 175.00-225.00
Alfalfa - Good 150.00-175.00, small square 6.00-10.00 per bale
Alfalfa - Fair 125.00-150.00
Mixed grass - Good/Premium 125.00-200.00
Mixed grass-Fair/Good 80.00-125.00, small square 3.50-8.00 per bale
Mixed grass - Fair 25.00-50.00 per large round bale
Wheat straw - 4.00-7.00 per small square bale

Please Note: The above volumes (tonnage, acres, and bales) listed are for confirmed trades only, it does not include estimated volume (tonnage) for bids or offers to the trade. List your hay for sale at: [Hay Listing Online Form](#). Explanation of Hay Quality Guidelines: [Hay Quality Designation Guidelines](#). Glossary of Terms: [Livestock, Poultry, & Grain Hay Terms](#)

MISSOURI WEEKLY SHEEP/GOAT AUCTION SUMMARY

Receipts: 2,535 Week Ago: 4,720 Last Year: 1,705
SHEEP: Feeder lambs Medium and Large 1-2 25-40 lbs 200.00-240.00; 40-60 lbs 230.00-272.50. Small and Medium 1-2 hair 20-40 lbs 210.00-260.00, thin 205.00; 40-50 lbs 230.00-275.00, thin 205.00.
Slaughter lambs Choice and Prime 1-3 w/s 50-90 lbs 265.00-285.00. Choice and Prime 1-2 woolled 40-50 lbs 205.00-237.00; 60-90 lbs 235.00-265.00; 90-100 lbs 267.00-277.00. Choice 1-2 hair 40-70 lbs 225.00-252.00; 70-90 lbs 230.00-295.00; 90-100 lbs 225.00-255.00. Choice and Prime 1-3 hair 50-70 lbs 250.00-277.50; 70-90 lbs 265.00-300.00. Choice 1-3 hair 50-65 lbs 217.50-245.00; 70-80 lbs 237.50-265.00. Good 1-2 hair 50-130 lbs 185.00-192.50. Slaughter ewes Utility and Good 1-3 120-165 lbs 102.50-117.50. Utility and Good 2 100-145 lbs 85.00-170.00. Good 2-3 hair 80-125 lbs 125.00-150.00. Utility and Good 1-3 hair 85-140 lbs 107.50-122.50. Cull and Utility 1-2 hair 70-125 lbs 70.00-102.50. Slaughter bucks 100-120 lbs 162.00-190.00. Hair bucks 1-2 100-145 lbs 170.00-240.00; 150-180 lbs 150.00-172.00.
Replacement ewes Medium and Large 1-2 2-4 yrs 95 lbs exp 220.00; 100-135 lbs exp 125.00-165.00. Medium and Large 2 2-4 yrs 100-110 lbs exp 197.00-255.00. Small and Medium 1-2 hair 1-2 yrs 60-90 lbs exp 172.50-227.50; 2-4 yrs 70-85 lbs exp 150.00-167.50. Families Small and Medium 1-2 2-4 yrs 105 lbs exp with <20 lb lambs 200.00-210.00/fam.
GOATS: Feeder kids Selection 1 25-50 lbs 300.00-427.50. Selection 1-2 25-35 lbs 225.00-275.00. Selection 2 20-30 lbs 245.00-307.50; 30-50 lbs 250.00-345.00. Selection 3 20-50 lbs 168.00-240.00, pygmies 152.50-186.00. Wether kids Selection 2 pkg 38 lbs 305.00. Selection 2 pkg 54 lbs 237.50, pygmies 205.00.
Slaughter kids Selection 1 45-80 lbs 345.00-442.50. Selection 1-2 40-65 lbs 275.00-312.00, pkg 89 lbs 225.00. Selection 2 50-75 lbs 270.00-340.00, pygmies 250.00. Selection 3 50-60 lbs 222.50-250.00.
Slaughter nannies Selection 1-2 65-70 lbs 125.00-175.00; 80-95 lbs 150.00-220.00; 100-140 lbs 112.50-205.00. Slaughter bucks Selection 1-2 75-95 lbs 210.00-360.00; 100-145 lbs 190.00-370.00; 155-185 lbs 242.50-285.00; 200-295 lbs 212.50-255.00.
Replacement nannies Selection 1-2 1-2 yrs 50-60 lbs exp 235.00-265.00; 65-95 lbs exp 190.00-225.00; 2-4 yrs 88 lbs bred 225.00; 80-90 lbs exp 160.00-225.00. Families Selection 1-2 1-2 yrs 70-80 lbs exp with <20 lb kids 210.00-218.00/fam.

Explanatory Notes: Stage - Represents estimated lambing/kidding period (Open, Exp=exposed, Bred, Fall = Sep-Nov, Win = Dec-Feb, Spr = Mar-May, Sum=Jun-Aug; w/s = woolled and shorn; /hd= per head; /fam=per family
All price CWT unless otherwise noted.

MISSOURI DROUGHT MONITOR

Date	None	D0	D1	D2	D3	D4
5/13/25	77.98	15.10	6.92	0	0	0
5/6/25	81.37	18.63	0	0	0	0
5/14/24	82.02	9.82	8.12	0.04	0	0

Reflects percentage of Missouri impacted by drought. D0 Abnormally Dry; D1 Moderate Drought; D2 Severe Drought; D3 Extreme Drought; D4 Exceptional Drought

NATIONAL DIRECT DELIVERED FEEDER PIG REPORT

5/16/25 Receipts: 138,181 Week ago: 144,370 Year Ago: 127,823
Early weaned pigs and feeder pigs steady to firm.
Cash 87,179 head 35.00-567.00, weighted average 49.66
Formula 38,052 head 39.27-54.92, weighted average 46.71
Feeder pigs 40 pounds basis: Cash 12,950 head 74.00-86.00, weighted average 80.05

NATIONAL DAILY DIRECT PRIOR DAY HOG REPORTS 5/16/25

BARROWS AND GILTS (Carcass Basis): 1,922 head
Base Carcass Price 86.00-97.00, weighted average 92.88

SOWS (Live Basis): 6,720 head
300-500 lbs. 25.00-79.69
Over 500 lbs. 52.79-79.69

MISSOURI WEEKLY DIRECT SLAUGHTER CATTLE REPORT 5/16/25

Weekly Receipts: 280 Week ago: 800 Year ago: 360
Trading as of Friday morning, flat dressed price 3.00 higher and grid dressed sales steady.

LIVE STEERS & HEIFERS: No sales reported
DRESSED STEERS & HEIFERS: 4 loads Thu 358.00

GRADE AND EIGHT (Grid): 3 loads Thu 362.00

Click here for the current [National Crop Progress](#)
Click here for the current [Missouri Crop Progress](#)
The current hay directory can be found at: [Hay Directory](#).