

Weekly Market Summary

Published by:
Missouri Department of Agriculture
Ag Business Development Division
Market News Program



Chris Chinn, Director
Jill Wood, Division Director
Tony Hancock, Editor
[agmarketnews.mo.gov](http://www.ams.usda.gov/marketnews.htm)
<http://www.ams.usda.gov/marketnews.htm>

Michael Kehoe, Governor

Volume XLV, Number 21 ♦ P.O. Box 630, Jefferson City, MO 65102 ♦ (573) 751-4211 ♦ Mon, May 26, 2025

MISSOURI WEEKLY FEEDER CATTLE WEIGHTED AVERAGE REPORT

Feeder Cattle Receipts: 36,975 Week ago: 32,482 Year ago: 30,655
Steers and Heifers Medium and Large 1—Weighted average weights and prices

STEERS: Medium and Large 1

279 lbs. 511.54	472 lbs. 431.81	672 lbs. 342.62	870 lbs. 291.42
321 lbs. 494.48	524 lbs. 405.65	723 lbs. 321.56	921 lbs. 275.87
375 lbs. 462.82	571 lbs. 388.91	766 lbs. 308.35	966 lbs. 269.82
427 lbs. 455.77	617 lbs. 368.10	834 lbs. 291.49	

HEIFERS: Medium and Large 1

326 lbs. 438.16	523 lbs. 356.36	720 lbs. 307.83	959 lbs. 249.14
377 lbs. 427.64	572 lbs. 334.65	772 lbs. 286.79	970 lbs. 245.31
426 lbs. 403.19	620 lbs. 320.16	827 lbs. 269.48	
474 lbs. 379.22	674 lbs. 302.71	870 lbs. 262.43	

MISSOURI STEER (HEIFER) STOCKER FORMULA 5/26/2025

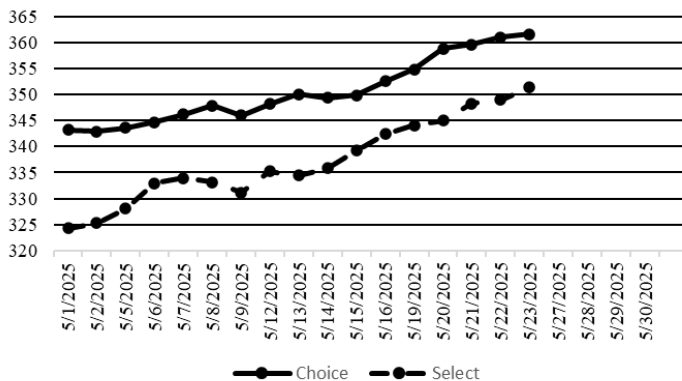
Monday's Missouri Stocker formula consists of 10,575 (8767) head with a weighted average weight of 542.12 (526.36) lbs. and a price value of 388.47 (345.89), 5.87 lower (6.91 lower) than a week ago.

This a rolling seven day calculated weighted value which combines all Feeder Steers reported by MDA/USDA Market News Service weighing from 400-649 lbs. in the Medium and Large 1 and Medium and Large 1-2 frame and muscle classifications, including all comment cattle except Brahman X. Heifer values are in parentheses.

NATIONAL BOXED BEEF CUTOUT VALUES

DATE	CHOICE	SELECT	TOTAL LOADS
5/19	354.81	344.11	72
5/20	358.75	344.96	101
5/21	359.59	348.28	122
5/22	360.97	348.95	81
5/23	361.55	351.32	71
5 Day Simple Average	359.31	347.52	

Boxed Beef Cuts May 2025



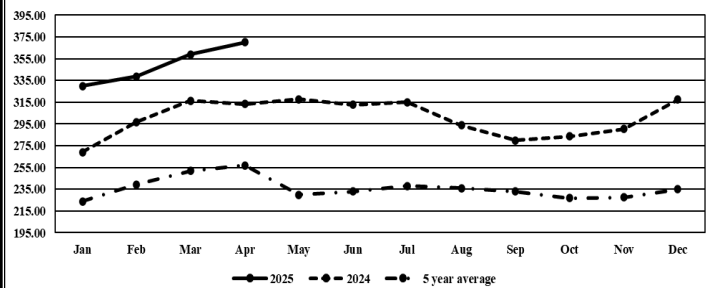
*Axis value ranges may be updated to reflect data points.

WEEKLY LIVESTOCK SLAUGHTER 5/25/25

	CATTLE	HOGS	SHEEP
Week to Date:	570,000	2,362,000	39,000
Last Week:	566,000	2,400,000	36,000
Last Year:	602,136	2,371,081	36,342

The Weekly Market Summary, as well as historical summaries, are available on our website <https://agmarketnews.mo.gov/summaries>
Market News Hotline: 1-573-522-9244
Check out the latest updates on our YouTube Channel: [MDA Market News](https://www.youtube.com/channel/UCM4M4M4M4M4M4M4M4M4M4M4)

Missouri Stocker Formula - Steers



*Graph is updated the first Monday of each month. Axis value ranges may be updated to reflect data points.

MISSOURI WEEKLY CATTLE AUCTION SUMMARY

Total Receipts: 41,699 Week Ago: 39,366 Year Ago: 36,118

Compared to the light test from last week, feeder steers and heifers sold steady to 5.00 lower with most of the decline on calves under 600 lbs. The supply of feeders was moderate with the majority of the offering still being calves under 600 lbs. Several producers came to town this week feeling market tops might have now been made and given the holiday week with many barns taking the week off it was time to turn them loose. The monthly cattle on feed report was released on Friday and was mostly a nonevent as actual numbers for all three areas were right in line with pre-report estimates. On feed numbers were reported at 98.4 percent, placements at 97.4 percent, and marketings at 97.4 percent of last year. Still some very impressive sales taking place some stick out sales this week included 43 head of 437 lb. steers at Joplin Regional Stockyards for 490.00. Kingsville Livestock Auction sold 33 head of 506 lb. steers for 424.00. MoKan Livestock Market sold 30 head of 551 lb. steers for 410.00. Windsor Livestock Action sold 68 head of 699 lb. steers for 344.00. Ozark Regional Stockyards sold 22 head of 716 lb. steers for 335.00. Callaway Livestock Center sold 50 head of 764 lb. steers for 318.00 and 120 head of 885 lb. steers for 295.00. Joplin Regional Stockyards sold 61 head of 835 lb. steers for 299.00. Tina Livestock Auction sold 64 head of 929 lb. steers for 285.00. On the heifer side of the market, Ozark Regional Stockyards sold 79 head of 533 lb. heifers for 370.00. New Cambria Livestock Auction sold 75 head of 730 lb. heifers for 321.00. Boxed beef cutouts continued the upward climb this week. Choice closed on Friday at 361.55, up 9.06 and Select closed at 351.22, up 8.93 compared to last Friday. Negotiated feedlot sales as of the 2:00 cutoff time for Friday afternoons report totaled just over 44K head for the week. Live prices were mostly steady to 2.00 higher and dressed sales were 2.00 higher. Live sales were reported mostly at 219.00-220.00 in the south and 230.00 in the north, dressed sales were reported mostly at 360.00. The Missouri Stocker formula consists of 10,575 head with a weighted average weight of 542.12 lbs. and a price value of 388.47, 5.87 lower than last week. The steer/heifer spread is 42.58 per cwt.

SOUTHWEST MISSOURI WEEKLY SUMMARY

(Joplin and Springfield)

Receipts: 13,196 Week ago: 13,028 Year Ago: 12,020
Compared to last week, steers and heifers steady to 10.00 lower, spots 20.00 lower late week, except some heifers early week spots 5.00 higher. Slaughter cows 2.00 lower to 5.00 higher. Slaughter bulls 2.00 to 5.00 higher.

FEEDER STEERS:

Medium and Large 1

300-400 lbs.	430.00-520.00
400-500 lbs.	387.50-500.00
500-600 lbs.	365.00-447.00
600-700 lbs.	322.50-375.00
700-800 lbs.	295.00-332.50
800-900 lbs.	280.00-299.00
900-1000 lbs.	266.00-280.00

FEEDER HEIFERS:

Medium and Large 1

300-400 lbs.	405.00-460.00
400-500 lbs.	352.50-440.00
500-600 lbs.	310.00-380.00
600-700 lbs.	285.00-330.00
700-800 lbs.	275.00-309.00
800-900 lbs.	257.00-274.00
950-1000 lbs.	240.00-252.00

FEEDER HOLSTEIN STEERS

Large 3

Scarce

Scarce

SLAUGHTER COWS: Breaking and Boning (70-85% lean)

135.00-158.00; high dressing 151.00-166.00; low dressing 120.00-147.50. Lean (85-90%) 125.00-149.00.

SLAUGHTER BULLS: Yield

Grade 1-2 1210-2190 lbs. 165.00-192.00; high dressing 187.50-223.00; low dressing 155.00-168.00

BRED COWS: Medium and Large 1 2-8 yrs 1145-1680 lbs 2nd/3rd stage 2575.00-2850.00. Medium and Large 1-2 2-8 yrs 935-1490 lbs 2nd/3rd stage 1725.00-2900.00, 1st stage 1600.00-2500.00; >8 yrs 1025-1325 lbs 2nd/3rd stage 1700.00-2225.00 per head

COW & CALF PAIRS: Medium and Large 1 2-8 yrs 1426 lbs with 150-300 lb calves 3650.00. Medium and Large 1-2 2-8 yrs 1050-1260 lbs with 150-300 lb calves 2200.00-3850.00; >8 yrs 1060-1535 lbs with 150 to >300 lb calves 2500.00-3250.00 per pair

SOUTH CENTRAL MISSOURI WEEKLY SUMMARY

(West Plains, Phillipsburg)

Receipts: 6,862 Week ago: 5,664 Year Ago: 6,718
Compared to last week, feeders were mixed from 10.00 lower to 6.00 higher. Slaughter cows sold steady to 3.00 higher.

FEEDER STEERS:

Medium and Large 1

300-400 lbs.	442.50-517.50
400-500 lbs.	415.00-457.00
500-600 lbs.	373.00-399.00
600-700 lbs.	342.00-377.50
700-800 lbs.	302.00-335.00
800-850 lbs.	295.00-300.00
900-975 lbs.	266.00-280.00

FEEDER HEIFERS:

Medium and Large 1

300-400 lbs.	378.00-433.00
400-500 lbs.	362.00-415.00
500-600 lbs.	316.00-370.00
600-700 lbs.	296.00-328.00
Pkg 762 lbs.	279.00
800-830 lbs.	255.00-371.00

FEEDER HOLSTEIN STEERS:

Large 3

Scarce

Scarce

SLAUGHTER COWS: Breaking and Boning (70-85% lean) 137.00-158.00, high dressing 147.50-166.00; low dressing 128.00-142.50. Lean (85-90%) 126.00-143.00

SLAUGHTER BULLS: Yield

Grade 1-2 1245-2360 lbs. 165.00-183.00; high dressing 182.50-213.00; low dressing 139.00-165.00.

BRED COWS: Medium and Large 1-2 2-8 yrs 1030-1450 lbs 2200.00-2950.00 per head.

COW & CALF PAIRS: Medium and Large 1 2-8 yrs 1125-1175 lbs 150-300 lb calves 3600.00-3650.00 per pair

WEST CENTRAL MISSOURI WEEKLY SUMMARY

(Kingsville, Windsor, Butler)

Receipts: 6,784 Week ago: 6,233 Year ago: 6,162
Compared to last week, feeders sold steady to 15.00 higher, although there was spots of 5.00 lower early week. Slaughter cows and bulls sold steady to 5.00 higher.

FEEDER STEERS:

Medium and Large 1

300-400 lbs.	442.50-527.50
400-500 lbs.	407.50-467.50
500-600 lbs.	374.00-435.00
600-700 lbs.	323.00-396.00
700-750 lbs.	314.00-329.00
800-850 lbs.	283.00-289.00

FEEDER HEIFERS:

Medium and Large 1

300-400 lbs.	397.50-490.00
400-500 lbs.	350.00-445.00
500-600 lbs.	324.00-384.00
600-700 lbs.	298.50-330.00
700-800 lbs.	302.25-324.25

SLAUGHTER BULLS: Yield

Grade 1-2 1105-2085 lbs. 173.00-191.00; high dressing 196.00-202.00

SLAUGHTER COWS: Breaking and Boning (70-85% lean)

135.00-157.00, high dressing 150.00-167.00. Lean (85-90%) 119.00-148.00

BRED COWS: Medium and Large

1-2 2-8 yrs 1015-1555 lbs 2nd and 3rd stage 2050.00-3000.00 per head

COW & CALF PAIRS: scarce

NORTHEAST MISSOURI WEEKLY SUMMARY

(Bowling Green, Kingdom City, Palmyra)

Receipts: 5,435 Week ago: 6,224 Year ago: 4,925
Compared to last week, feeders were mixed from 10.00 lower to 12.00 higher on calves. Yearlings sold mostly steady. Slaughter cows steady to 5.00 higher and slaughter steers and heifers sold 1.00-3.00 higher.

FEEDER STEERS:

Medium and Large 1

400-500 lbs.	390.00-480.50
500-600 lbs.	365.00-429.00
600-700 lbs.	330.00-384.00
700-750 lbs.	304.00-326.00
800-900 lbs.	295.00-302.00
61 hd 949 lbs.	280.10

FEEDER HEIFERS:

Medium and Large 1

300-400 lbs.	385.00-450.00
400-500 lbs.	358.00-412.50
500-600 lbs.	331.00-369.50
600-700 lbs.	306.00-340.75
700-800 lbs.	279.00-302.00
19 hd 933 lbs.	250.00

SLAUGHTER BULLS: Yield

Grade 1-2 1450-2245 lbs. 185.00-207.00; high dressing 167.50-219.00; couple low dressing 172.00-180.00.

SLAUGHTER COWS: Breaking and Boning, (70-85% lean)

141.00-161.00; high dressing 153.00-170.00; low dressing 131.00-151.00. Lean (85-90%) 131.00-147.00.

SLAUGHTER STEERS: Choice 2

-3 222.00-227.00. Select and Choice 1-3 219.00-220.50.

SLAUGHTER HEIFERS: Choice

2-3 222.50-228.50.

BRED COWS: Scarce

COW CALF PAIRS: Scarce

NORTH CENTRAL MISSOURI WEEKLY SUMMARY

(Macon, Unionville, Green City, New Cambria)

Receipts: 1,965 Week ago: 2,152 Year ago: 300
Compared to two weeks ago, feeders sold 10.00-15.00 higher. Slaughter cows 3.00-6.00 higher.

*Some sale barns on a bi-weekly schedule and may not have a sale each week.

FEEDER STEERS:

Medium and Large 1

300-400 lbs.	455.00-505.00
400-500 lbs.	430.00-450.00
500-600 lbs.	379.00-447.00
600-700 lbs.	332.00-379.00
Pkg 758 lbs.	316.00

FEEDER HEIFERS:

Medium and Large 1

300-400 lbs.	430.00-461.00
400-500 lbs.	362.50-430.00
500-600 lbs.	339.50-389.00
600-700 lbs.	300.00-332.00
700-750 lbs.	310.00-321.00

SLAUGHTER BULLS: Yield

Grade 1-2 1515-1900 lbs. 186.00-196.00; high dressing 203.00-206.50

SLAUGHTER COWS: Breaking and Boning (70-85% lean)

146.50-162.00, high dressing 160.00-167.00; low dressing 140.00-149.00. Lean (85-90%) 135.00-149.50

BRED COWS: Scarce

COW/CALF PAIRS: Scarce

SOUTHEAST MISSOURI WEEKLY SUMMARY

(Jackson and Farmington)

Receipts: 1,915 Week ago: 1,160 Year ago: 1,282
Compared to last week, feeders sold uneven from 14.00 lower to 10.00 higher. Slaughter cows sold steady to 5.00 higher and bulls steady to 1.00 higher.

FEEDER STEERS: Medium and Large 1

300-400 lbs. 425.00-530.00
400-500 lbs. 395.00-480.00
500-600 lbs. 322.00-422.00
600-700 lbs. 291.00-372.00
700-800 lbs. 265.00-325.00
800-850 lbs. 250.00-300.00

FEEDER HEIFERS: Medium and Large 1

300-400 lbs. 365.00-480.00
400-500 lbs. 350.00-402.00
500-600 lbs. 285.00-367.00
600-700 lbs. 265.00-317.00
700-800 lbs. 245.00-280.00
Pkg 807 lbs. 252.00

SLAUGHTER BULLS: Yield
Grade 1-2 1175-2275 lbs ind
177.00; high dressing 170.00-
207.00.

SLAUGHTER COWS: Breaking
and Boning (75-85% lean) 130.00-
142.00; high dressing 140.00-
174.00. Lean (85-90% lean)
100.00-120.00

BRED COWS: Medium and Large
2 2-8 yrs 1265-1550 lbs 2nd stage
2250.00-2600.00 per head

COW & CALF PAIRS: Medium
and Large 2 2-8 yrs 1020-1050 lbs
with <150 lb calves 2250.00-
2850.00 per pair

EAST CENTRAL MISSOURI WEEKLY SUMMARY

(Cuba, Vienna)

Receipts: 3,533 Week Ago: 3,375 Year ago: 3,262
Compared to last week, feeders sold steady to 5.00 lower, with several
under 475 lbs up to 12.00 lower. Slaughter cows 2.00-5.00 higher.

FEEDER STEERS: Medium and Large 1

300-400 lbs. 432.00-495.00
400-500 lbs. 392.00-450.00
500-600 lbs. 365.00-411.00
600-700 lbs. 330.00-397.00
700-800 lbs. 317.00-330.50

FEEDER HEIFERS: Medium and Large 1

300-400 lbs. 395.00-460.00
400-500 lbs. 350.00-420.00
500-600 lbs. 312.00-374.00
600-700 lbs. 298.00-330.50
700-750 lbs. 284.00-288.00

SLAUGHTER BULLS: Yield
Grade 1-2 1335-2075 lbs 172.00
-188.00; high dressing 188.50-
208.00; low dressing ind 154.00

SLAUGHTER COWS: Breaking
and Boning, (70-85% lean) 144.00-
173.50; high dressing 153.50-
170.00. Lean (85-90%) 132.00-
148.50

BRED COWS: Medium and
Large 1 >8 yrs 1255 lbs 2nd
stage 2235.00. Medium and
Large 1-2 2-8 yrs 950-1340 lbs
1st to 3rd stage 2200.00-2825.00
per head

COW & CALF PAIRS: Scarce

NORTHWEST MISSOURI WEEKLY SUMMARY

(Tina)

Receipts: 1,457 Week Ago: 1,530 Year Ago: 914
Compared to last week, feeder cattle mostly steady. Slaughter cows
and bulls mostly 5.00 higher.

FEEDER STEERS: Medium and Large 1

300-400 lbs. 460.00-473.00
400-500 lbs. 431.00-450.00
500-600 lbs. 385.50-425.00
600-700 lbs. 354.00-387.00
700-750 lbs. 311.00-319.00
Pkg 854 lbs. 284.00
900-1000 lbs. 277.00-285.00

FEEDER HEIFERS: Medium and Large 1

300-400 lbs. 435.00-440.00
400-500 lbs. 360.00-420.00
500-600 lbs. 317.50-360.00
600-700 lbs. 310.00-326.75
Pkg 903 lbs. 243.50

SLAUGHTER BULLS:
Yield Grade 1-2 1460-2235 lbs
174.00-190.00; couple high dress-
ing 200.50-210.00.

SLAUGHTER COWS: Breaking
and Boning, (70-85% lean) 143.00-
159.00; high dressing 155.00-
165.00. Lean (85-90%) 120.00-
132.50.

BRED COWS: Scarce

COW/CALF PAIRS: Scarce

AFTERNOON NATIONAL SLAUGHTER CATTLE REVIEW

Thus far Friday in all feeding regions trade has been limited on moderate to good demand. A few live purchases have been reported in the Southern Plains mostly at 220.00, however not enough for an adequate market test. The latest established market in any feeding region was on Wednesday in Nebraska with live purchases from 230.00-231.00 with dressed purchases ranging from 360.00-370.00, mostly at 360.00. On Wednesday in the Western Cornbelt live purchases traded mostly at 230.00 with dressed purchases ranging from 360.00-365.00, mostly at 360.00 on a light test. The last established live market in Kansas was last week at 220.00. The last established live market in the Texas Panhandle was last week at mostly 220.00.

Negotiated Cash Sales:

Confirmed:	4,525	Week Ago:	9,101	Year Ago:	4,925
Week to date:	44,217	Week Ago:	75,931	Year Ago:	63,174

<u>Live Basis</u>	<u>Steers</u>	<u>Heifers</u>
Over 80% Choice	220.00-231.00 avg 229.15	220.00-231.00 avg 223.90
65-80% Choice	219.00-220.00 avg 219.84	218.00-220.00 avg 219.09
35-65% Choice	220.00-220.00 avg 220.00	220.00-220.00 avg 220.00
0-35% Choice	-	-
Total All Grades	219.00-231.00 avg 225.33	218.00-231.00 avg 220.88
<u>Dressed Basis</u>		
Over 80% Choice	360.00-360.00 avg 360.00	365.00-365.00 avg 365.00
65-80% Choice	-	-
35-65% Choice	-	-
0-35% Choice	-	-
Total All Grades	360.00-360.00 avg 360.00	365.00-365.00 avg 365.00

<u>All Beef Type Steers/Heifers</u>	<u>Head</u>	<u>Avg Wt</u>	<u>Price Range</u>	<u>Wtd Avg</u>
Live FOB	3700	1414.0	218.00-232.00	225.40
Live Del	562	1416.3	225.00-232.00	229.95
Dressed Del	229	876.0	358.00-370.00	362.09
Dressed FOB	0	0	0	0

WEEKLY COMMODITY FUTURES TRENDS

Compared to last week, Live Cattle 3.58 to 4.60 higher, Lean Hogs 0.30 to 2.62 lower, Feeder Cattle 2.77 to 3.58 higher.

Daily Futures Closes

	Mon.	Tues.	Wed.	Thu.	Fri.
Cattle					
Jun	212.97	213.17	214.15	215.62	215.80
Aug	207.92	207.85	208.65	210.50	210.45
Oct	205.07	205.30	206.07	208.22	208.10
Dec	205.25	205.67	206.50	208.47	208.70
Feb	205.22	205.85	206.55	208.50	208.92
Lean Hogs					
Jun	99.25	100.02	99.52	98.70	98.30
Jul	103.57	103.55	102.52	102.05	101.55
Aug	103.10	103.00	102.35	102.00	101.27
Oct	87.15	87.05	86.65	86.90	86.10
Dec	79.25	79.30	79.10	79.35	78.47
Fdr Cattle					
May	295.67	296.00	296.30	295.40	300.37
Aug	297.47	297.50	296.42	299.77	299.35
Sep	296.32	296.20	295.05	298.62	299.35
Oct	294.05	294.05	292.80	296.45	297.35
Nov	291.32	291.57	290.25	293.90	294.90
Milk					
May	18.60	18.53	18.55	18.58	18.58
Jun	19.02	18.95	19.63	19.83	19.34
Jul	19.00	19.03	19.65	19.95	19.65

WEEKLY COMMODITY GRAIN FUTURES TRENDS

Compared to last week, Soybeans 0.10 to 0.17 higher, Wheat 0.18 to 0.21 higher, Corn 0.15 to 0.17 higher, KC Wheat 0.23 to 0.24 higher, Soybean Meal 4.30 to 5.80 higher.

Daily Grain Futures Closes

	Mon.	Tues.	Wed.	Thu.	Fri.
Soybeans					
Jul	1050 3/4	1053	1062 3/4	1067 1/2	1060 1/4
Aug	1047 3/4	1050 1/4	1059	1062 1/2	1056
Sep	1030 1/2	1034	1044 1/2	1046 3/4	1041 3/4
Nov	1037	1041	1052 1/4	1055 1/4	1050 1/2
Jan	1049	1053	1064 1/2	1067 1/2	1063 3/4
Wheat					
Jul	529	546	549 1/4	544 1/2	542 1/2
Sep	543	559 3/4	563 3/4	560 1/2	558
Dec	564 1/2	580 1/4	585 1/2	583 1/4	580 3/4
Mar	584	599	604 1/2	603	600 3/4
May	595 1/2	609 3/4	615 1/2	614 1/2	612 1/2
Corn					
Jul	447 1/2	454 1/2	461	463	459 1/2
Sep	428 1/4	435 1/4	442 3/4	441	437 3/4
Dec	441 3/4	448 1/2	455 1/2	453 1/4	450 3/4
Mar	456 1/2	463	470	468	465 3/4
May	465	471 1/4	478 1/4	476 1/2	474 1/4
KC Wheat					
May	509 1/4	509 1/4	509 1/4	509 1/4	509 1/4
Jul	522 3/4	536 1/4	540 1/2	540	538 3/4
Sep	536 1/2	550	554 3/4	555	553 3/4
Dec	558 1/2	571 1/2	576 3/4	577 1/4	576 1/2
Mar	578 1/4	590 3/4	596 1/4	596 3/4	596
SB Meal					
Jul	291.10	292.60	294.10	298.50	296.20
Aug	294.60	296.00	297.70	302.30	300.20
Sep	297.40	298.70	300.50	305.00	303.20
Oct	298.90	300.20	302.50	306.90	305.30
Dec	302.90	304.40	307.20	311.60	310.10

MISSOURI GRAIN WEEKLY TRENDS

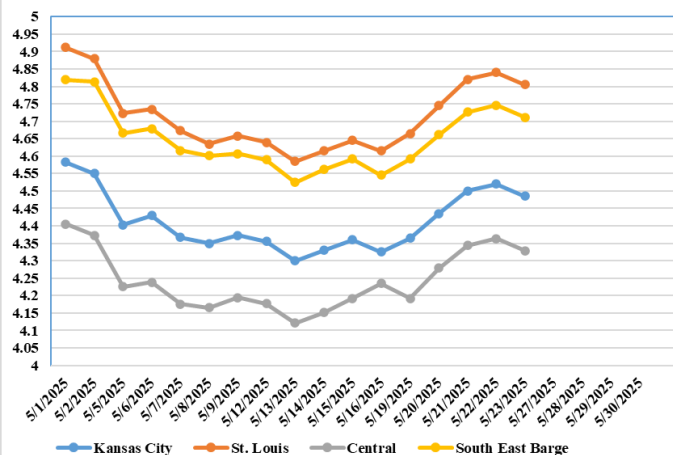
Compared to last week, Soybeans 0.10 higher, Wheat 0.17 to 0.22 higher, Corn 0.16 to 0.21 higher.

Area	#1 Soybeans	#2 Soft Wheat	#2 Corn	#2 Grain Sorghum
Kansas City				
Friday**	10.30-10.75	5.20	4.14-4.52	3.54
Monday	10.31-10.76	5.24	4.18-4.56	3.58
Tuesday	10.33-10.78	5.41	4.25-4.63	3.65
Wednesday	10.43-10.88	5.44	4.31-4.69	3.71
Thursday	10.48-10.93	5.40	4.33-4.71	3.73
Friday	10.40-10.85	5.37	4.29-4.67	3.69
St. Louis				
Friday**	10.63	5.15-5.20	4.62	—
Monday	10.64	5.19-5.24	4.67	—
Tuesday	10.66	5.36-5.41	4.75	—
Wednesday	10.77	5.39-5.44	4.82	—
Thursday	10.81	5.40-5.45	4.84	—
Friday	10.73	5.37-5.42	4.80	—
Central				
Friday**	10.15-10.30	4.85	4.09-4.19	—
Monday	10.16-10.31	4.89	4.13-4.23	—
Tuesday	10.18-10.33	5.06	4.25-4.30	—
Wednesday	10.28-10.43	5.09	4.31-4.36	—
Thursday	10.33-10.53	5.05	4.33-4.38	—
Friday	10.25-10.45	5.02	4.29-4.34	—
S.E. MO				
Friday**	10.20-10.65	—	4.52-4.57	—
Monday	10.21-10.66	—	4.56-4.63	—
Tuesday	10.23-10.68	—	4.63-4.70	—
Wednesday	10.33-10.78	—	4.69-4.76	—
Thursday	10.38-10.83	—	4.71-4.78	—
Friday	10.30-10.75	—	4.67-4.74	—

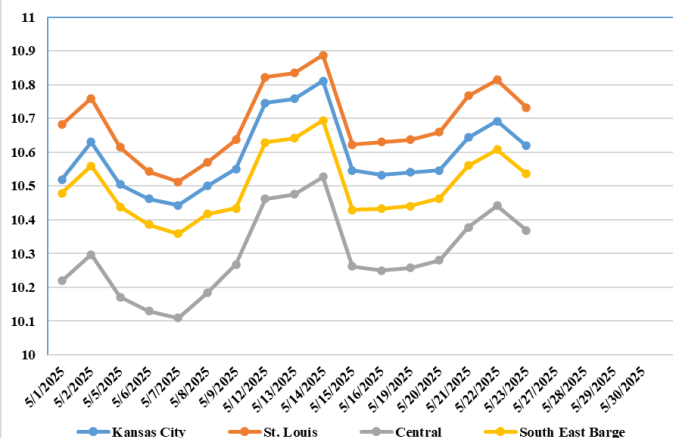
(PRICES PER BUSHEL) *NEW CROP **PREVIOUS WEEK'S PRICES
*Bids calculated using Kansas City, St. Louis, and St. Joseph bids

MONTHLY GRAIN CROP

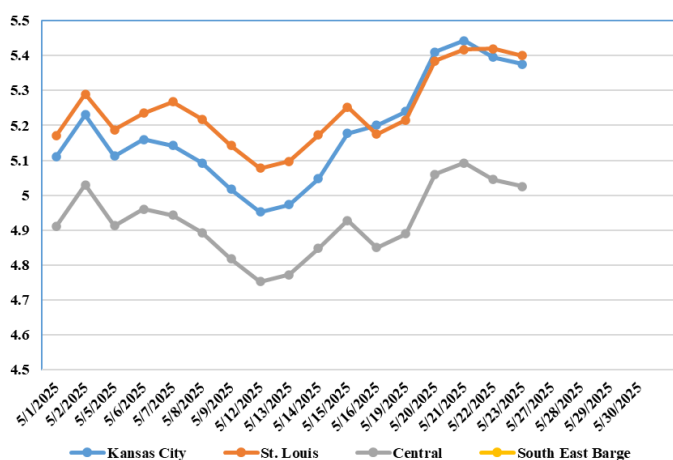
May 2025 Corn Bids



May 2025 Soybean Bids



May 2025 Wheat Bids



*Axis value ranges may be updated to reflect data points.
Only dates in which markets are trading and only current cash bids are represented.

WHOLESALE FEEDSTUFFS PRICES (DOLLARS PER TON-BULK BASIS)

Area	<u>Cottonseed Meal 41%</u>	<u>Soybean Meal 46.5-48%</u>	<u>Corn Gluten Pellets 21%</u>	<u>Wheat Middlings</u>
Kansas City	297.50	276.50	196.00	99.33
St. Louis	292.50	n/a	190.50	87.50

MISSOURI CROP PROGRESS AND CONDITION 5/19/25

There were 5.8 days suitable for fieldwork in the week ending May 18, 2025. Statewide, the average temperature was 68.9 degrees, 4.6 degrees above normal. Precipitation averaged 0.40, 0.81 inches below average. Topsoil moisture supply was rated 3 percent very short, 19 percent short, 74 percent adequate, and 4 percent surplus. Subsoil moisture supply was rated 2 percent very short, 14 percent short, 80 percent adequate, and 4 percent surplus. Corn planted reached 87 percent, compared to the 5-year average of 83 percent. Corn emerged reached 63 percent, compared to the 5-year average of 62 percent. Corn condition was rated 3 percent poor, 18 percent fair, 72 percent good, and 7 percent excellent. Soybeans planted reached 59 percent, compared to the 5-year average of 41 percent. Soybeans emerged reached 30 percent, compared to the 5-year average of 23 percent. Cotton planted reached 66 percent, compared to the 5-year average of 60 percent. Cotton emerged reached 40 percent. Rice planted reached 86 percent, compared to the 5-year average of 81 percent. Rice emerged reached 68 percent, compared to the 5-year average of 63 percent. Rice condition was rated 6 percent poor, 7 percent fair, 84 percent good, and 3 percent excellent. Winter wheat headed reached 92 percent, compared to the 5-year average of 83 percent. Winter wheat condition was rated 4 percent poor, 19 percent fair, 61 percent good, and 16 percent excellent.

	Week Ending			
	5/18/25	5/11/25	5/18/24	5 yr average
Corn Planted	87	68	75	83
Corn Emerged	63	43	60	62
Soybeans Planted	59	40	41	41
Soybeans Emerged	30	17	30	23
Winter Wheat Headed	92	76	94	83
Alfalfa hay 1st cutting	28	6	14	13
Other hay cut	12	3	11	7

CATTLE ON FEED

United States Cattle on Feed Down 2 Percent

Cattle and calves on feed for the slaughter market in the United States for feedlots with capacity of 1,000 or more head totaled 11.4 million head on May 1, 2025. The inventory was 2 percent below May 1, 2024.

Placements in feedlots during April totaled 1.61 million head, 3 percent below 2024. Net placements were 1.56 million head. During April, placements of cattle and calves weighing less than 600 pounds were 310,000 head, 600-699 pounds were 225,000 head, 700-799 pounds were 370,000 head, 800-899 pounds were 443,000 head, 900-999 pounds were 195,000 head, and 1,000 pounds and greater were 70,000 head.

Marketings of fed cattle during April totaled 1.83 million head, 3 percent below 2024.

Other disappearance totaled 50,000 head during April, 11 percent below 2024.

MISSOURI WEEKLY HAY SUMMARY 5/15/2025

Special Note: Beginning 6/19/25, this report will be published biweekly. Any questions or concerns can be emailed to mymarketnews@usda.gov.

Hay equipment is back in the fields in many areas of the state, not only is some wrapping being done but also some dry hay being baled. Several producers are trying to catch up on what has become a late first cutting of alfalfa in many cases, do to earlier than usual growth and poor conditions to get into fields. Although there has not been a lot of new crop hay sold thus far asking prices are mostly steady, supply and demand are light to moderate. The Missouri Department of Agriculture has a hay directory at <https://apps.mda.mo.gov/haydirectory> or visit the University of Missouri Extension feed stuff finder at <https://feedstufffinder.org>

Alfalfa - Supreme 250.00-300.00, small square 10.00-17.00 per bale
Alfalfa - Premium 175.00-225.00
Alfalfa - Good 150.00-175.00, small square 6.00-10.00 per bale
Alfalfa - Fair 125.00-150.00
Mixed grass - Good/Premium 125.00-200.00
Mixed grass-Fair/Good 80.00-125.00, small square 3.50-8.00 per bale
Mixed grass - Fair 25.00-50.00 per large round bale
Wheat straw - 4.00-7.00 per small square bale

Please Note: The above volumes (tonnage, acres, and bales) listed are for confirmed trades only, it does not include estimated volume (tonnage) for bids or offers to the trade. List your hay for sale at: [Hay Listing Online Form](#). Explanation of Hay Quality Guidelines: [Hay Quality Designation Guidelines](#). Glossary of Terms: [Livestock, Poultry, & Grain Hay Terms](#)

MISSOURI WEEKLY SHEEP/GOAT AUCTION SUMMARY

05/17/25

Receipts: 2,535 Week Ago: 4,720 Last Year: 1,705

SHEEP: Feeder lambs Medium and Large 1-2 25-40 lbs 200.00-240.00; 40-60 lbs 230.00-272.50. Small and Medium 1-2 hair 20-40 lbs 210.00-260.00, thin 205.00; 40-50 lbs 230.00-275.00, thin 205.00. Slaughter lambs Choice and Prime 1-3 w/s 50-90 lbs 265.00-285.00. Choice and Prime 1-2 woolled 40-50 lbs 205.00-237.00; 60-90 lbs 235.00-265.00; 90-100 lbs 267.00-277.00. Choice 1-2 hair 40-70 lbs 225.00-252.00; 70-90 lbs 230.00-295.00; 90-100 lbs 225.00-255.00. Choice and Prime 1-3 hair 50-70 lbs 250.00-277.50; 70-90 lbs 265.00-300.00. Choice 1-3 hair 50-65 lbs 217.50-245.00; 70-80 lbs 237.50-265.00. Good 1-2 hair 50-130 lbs 185.00-192.50. Slaughter ewes Utility and Good 1-3 120-165 lbs 102.50-117.50. Utility and Good 2 100-145 lbs 85.00-170.00. Good 2-3 hair 80-125 lbs 125.00-150.00. Utility and Good 1-3 hair 85-140 lbs 107.50-122.50. Cull and Utility 1-2 hair 70-125 lbs 70.00-102.50. Slaughter bucks 100-120 lbs 162.00-190.00. Hair bucks 1-2 100-145 lbs 170.00-240.00; 150-180 lbs 150.00-172.00. Replacement ewes Medium and Large 1-2 2-4 yrs 95 lbs exp 220.00; 100-135 lbs exp 125.00-165.00. Medium and Large 2 2-4 yrs 100-110 lbs exp 197.00-255.00. Small and Medium 1-2 hair 1-2 yrs 60-90 lbs exp 172.50-227.50; 2-4 yrs 70-85 lbs exp 150.00-167.50. Families Small and Medium 1-2 2-4 yrs 105 lbs exp with <20 lb lambs 200.00-210.00/fam.

GOATS: Feeder kids Selection 1 25-50 lbs 300.00-427.50. Selection 1-2 25-35 lbs 225.00-275.00. Selection 2 20-30 lbs 245.00-307.50; 30-50 lbs 250.00-345.00. Selection 3 20-50 lbs 168.00-240.00, pygmies 152.50-186.00. Wether kids Selection 2 pkg 38 lbs 305.00. Selection 2 pkg 54 lbs 237.50, pygmies 205.00. Slaughter kids Selection 1 45-80 lbs 345.00-442.50. Selection 1-2 40-65 lbs 275.00-312.00, pkg 89 lbs 225.00. Selection 2 50-75 lbs 270.00-340.00, pygmies 250.00. Selection 3 50-60 lbs 222.50-250.00. Slaughter nannies Selection 1-2 65-70 lbs 125.00-175.00; 80-95 lbs 150.00-220.00; 100-140 lbs 112.50-205.00. Slaughter bucks Selection 1-2 75-95 lbs 210.00-360.00; 100-145 lbs 190.00-370.00; 155-185 lbs 242.50-285.00; 200-295 lbs 212.50-255.00. Replacement nannies Selection 1-2 1-2 yrs 50-60 lbs exp 235.00-265.00; 65-95 lbs exp 190.00-225.00; 2-4 yrs 88 lbs bred 225.00; 80-90 lbs exp 160.00-225.00. Families Selection 1-2 1-2 yrs 70-80 lbs exp with <20 lb kids 210.00-218.00/fam.

Explanatory Notes: Stage - Represents estimated lambing/kidding period (Open, Exp=exposed, Bred, Fall = Sep-Nov, Win = Dec-Feb, Spr = Mar-May, Sum=Jun-Aug; w/s = woolled and shorn; /hd= per head; /fam=per family
All price CWT unless otherwise noted.

MISSOURI DROUGHT MONITOR

Date	None	D0	D1	D2	D3	D4
5/20/25	82.85	14.14	3.01	0	0	0
5/13/25	77.98	15.10	6.92	0	0	0
5/21/24	88.20	6.34	5.46	0	0	0

Reflects percentage of Missouri impacted by drought. D0 Abnormally Dry; D1 Moderate Drought; D2 Severe Drought; D3 Extreme Drought; D4 Exceptional Drought

NATIONAL DIRECT DELIVERED FEEDER PIG REPORT

5/23/25 Receipts: 126,778 Week ago: 138,181 Year Ago: 119,819
Early weaned pigs and feeder pigs mostly steady.
Cash 85,015 head 36.00-63.00, weighted average 49.66
Formula 35,465 head 40.36-56.66, weighted average 48.87
Feeder pigs 40 pounds basis: Cash 8,298 head 75.00-90.00, weighted average 80.32

NATIONAL DAILY DIRECT PRIOR DAY HOG REPORTS 5/23/25

BARROWS AND GILTS (Carcass Basis): 2,961 head
Base Carcass Price 88.00-99.50, weighted average 96.45

SOWS (Live Basis): 6,781 head
300-500 lbs. 25.00-79.69
Over 500 lbs. 58.03-79.69

MISSOURI WEEKLY DIRECT SLAUGHTER CATTLE REPORT 5/23/25

Weekly Receipts: 240 Week ago: 280 Year ago: xxx
Trading as of Friday morning, flat dressed sales 2.00-5.00 higher, grid sales 5.00 higher

LIVE STEERS & HEIFERS: No sales reported
DRESSED STEERS & HEIFERS: 4 loads flat 360.00-362.00

GRADE AND EIGHT (Grid): 2 loads 367.00

Click here for the current [National Crop Progress](#)
Click here for the current [Missouri Crop Progress](#)
The current hay directory can be found at: [Hay Directory](#).