

Weekly Market Summary

Published by:
Missouri Department of Agriculture
Ag Business Development Division
Market News Program



Chris Chinn, Director
Jill Wood, Division Director
Tony Hancock, Editor
<http://www.ams.usda.gov/marketnews.htm>
<http://www.ams.usda.gov/marketnews.htm>

Michael Kehoe, Governor

Volume XLV, Number 22 ♦ P.O. Box 630, Jefferson City, MO 65102 ♦ (573) 751-4211 ♦ Mon, June 2, 2025

MISSOURI WEEKLY FEEDER CATTLE WEIGHTED AVERAGE REPORT

Feeder Cattle Receipts: 8,426 Week ago: 36,975 Year ago: 9,027
Steers and Heifers Medium and Large 1—Weighted average weights and prices

STEERS: Medium and Large 1

280 lbs. 525.48	479 lbs. 412.40	664 lbs. 345.89	886 lbs. 292.77
331 lbs. 476.63	525 lbs. 400.15	710 lbs. 330.47	913 lbs. 289.69
369 lbs. 449.57	576 lbs. 388.87	768 lbs. 310.85	974 lbs. 271.06
428 lbs. 441.33	616 lbs. 370.34	831 lbs. 297.63	

HEIFERS: Medium and Large 1

325 lbs. 444.28	518 lbs. 353.16	729 lbs. 312.83
371 lbs. 409.64	564 lbs. 345.37	
424 lbs. 394.61	622 lbs. 320.17	
470 lbs. 378.74	674 lbs. 317.45	

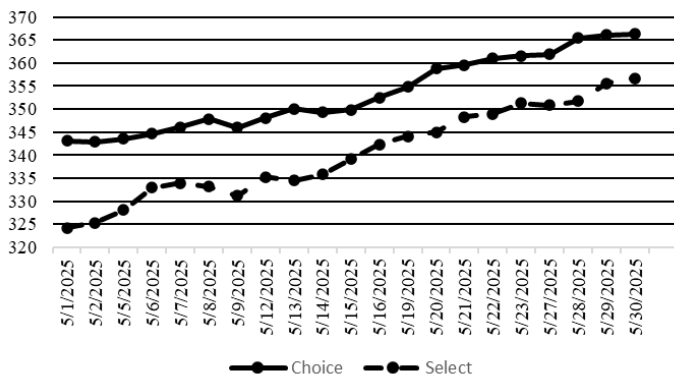
MISSOURI STEER (HEIFER) STOCKER FORMULA 6/2/2025

Monday's Missouri Stocker formula consists of 1,933 (1,750) head with a weighted average weight of 547.20 (535.83) lbs. and a price value of 378.09 (339.97), 10.38 lower (5.92 lower) than a week ago. This is a rolling seven day calculated weighted value which combines all Feeder Steers reported by MDA/USDA Market News Service weighing from 400-649 lbs. in the Medium and Large 1 and Medium and Large 1-2 frame and muscle classifications, including all comment cattle except Brahman X. Heifer values are in parentheses.

NATIONAL BOXED BEEF CUTOUT VALUES

DATE	CHOICE	SELECT	TOTAL LOADS
5/26	-	-	-
5/27	361.85	350.83	112
5/28	365.42	351.74	138
5/29	366.09	353.64	118
5/30	366.34	356.65	85
4 Day Simple Average	364.93	353.72	

Boxed Beef Cuts May 2025



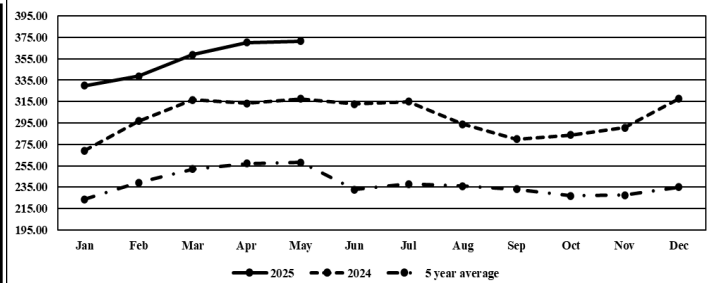
*Axis value ranges may be updated to reflect data points.

WEEKLY LIVESTOCK SLAUGHTER 5/31/25

	CATTLE	HOGS	SHEEP
Week to Date:	477,000	2,163,000	32,000
Last Week:	570,000	2,362,000	39,000
Last Year:	538,910	2,162,210	32,260

The Weekly Market Summary, as well as historical summaries, are available on our website <https://agmarketnews.mo.gov/summaries>
Market News Hotline: 1-573-522-9244
Check out the latest updates on our YouTube Channel: [MDA Market News](https://www.youtube.com/channel/UCM4M4M4M4M4M4M4M4M4M4M4)

Missouri Stocker Formula - Steers



*Graph is updated the first Monday of each month. Axis value ranges may be updated to reflect data points.

MISSOURI WEEKLY CATTLE AUCTION SUMMARY

Total Receipts: 10,776 Week Ago: 41,699 Year Ago: 11,405

Compared to last week, the holiday shorten week did not provide enough volume for an adequate market test. Many auctions were closed for the week and the few that were open had very light offerings. Early week rumors that proved to be untrue caused already nervous futures markets to drop sharply and end the week lower although they did recover some of the early week's losses by Friday. Cash markets mostly brushed off the news as overall short supplies and continued demand for beef seem to out weight all else. Hay season is near full swing even though the weather isn't totally cooperative farmers are still managing to get several fields baled. Corn planting is all but done now and beans are quickly wrapping up as well. There were a few loads of yearlings sold around the state, calves that sold however were mostly in very small lots with very few drafts over 20 head. Ozarks Regional Stockyards sold 19 head of 538 lb. steers for 397.50. Unionville Livestock Market sold 22 head of 705 lb. steers for 339.00 as well as 7 full loads of 875-910 lb. reputation steers that sold from 293.75-299.50. Kingsville Livestock Auction sold 45 head of 750 lbs. steers for 323.00, 111 head of 909 lb. steers for 295.00. They also sold 151 head of 730 lb. heifers for 317.50. Windsor Livestock Auction sold 10 head of 505 lb. heifers for 382.50. Boxed beef cutouts closed higher on Friday for the 11th consecutive day. Choice closed at 366.34, up 4.79 and Select closed at 356.65, up 5.10 compared to last Friday. Negotiated feedlot sales as of the 2:00 cutoff time for Friday afternoons report totaled just over 74K head for the week. Weighted average prices will once again set a new record high following this week's trade. Live prices in the south 1.00 to 3.00 higher 221.00-223.00, in the north 4.00 to 5.00 higher mostly at 335.00, and dressed sales were 3.00 to 5.00 higher mostly at 370.00. The Missouri Stocker formula consists of 1933 head with a weighted average weight of 547.20 lbs. and a price value of 378.09, 10.38 lower than last week. The steer/heifer spread is 38.12 per cwt.

SOUTHWEST MISSOURI WEEKLY SUMMARY

(Joplin and Springfield)

Receipts: 2,335 Week ago: 13,196 Year Ago: 1,802
Compared to last week, steers mostly 3.00 to 8.00 higher, spots up to 12.00 higher. Heifers under 500 lbs weak undertone, over 500 lbs mostly 3.00 to 6.00 higher. Slaughter cows 2.00 to 5.00 higher. Slaughter bulls steady.

FEEDER STEERS:

Medium and Large 1

300-400 lbs.	435.00-490.00
400-500 lbs.	382.50-425.00
500-600 lbs.	363.00-400.00
600-700 lbs.	326.00-365.00
700-800 lbs.	295.00-327.00
Pkg 860 lbs.	289.00
26 hd 992 lbs.	265.00

FEEDER HEIFERS:

Medium and Large 1

300-400 lbs.	390.00-450.00
400-500 lbs.	360.00-370.00
500-600 lbs.	325.00-347.00
600-700 lbs.	307.50-325.00
700-800 lbs.	280.00

FEEDER HOLSTEIN STEERS

Large 3

Scarce

Scarce

SLAUGHTER COWS: Breaking and Boning (70-85% lean) 137.00-155.00; high dressing 155.00-172.50; low dressing 120.00-137.50. Lean (85-90%) 125.00-145.00.

SLAUGHTER BULLS: Yield Grade 1-2 1290-2430 lbs. 170.00-190.00; high dressing 187.00-216.00; low dressing 160.00-167.50

BRED COWS: Medium and Large 1 2-8 yrs 1115-1165 lbs 2nd/3rd stage 2600.00-2800.00. Medium and Large 1-2 2-8 yrs 995-1260 lbs 2nd/3rd stage 1840.00-2475.00, 1st stage 2100.00-2425.00; >8 yrs 1070-1165 lbs 2nd/3rd stage 1955.00-2250.00, 1st stage 1700.00-1780.00 per head

COW & CALF PAIRS: Medium and Large 1-2 2-8 yrs 960-1180 lbs with 150 to >300 lb calves 3450.00-3700.00 per pair

SOUTH CENTRAL MISSOURI WEEKLY SUMMARY

(West Plains, Phillipsburg)

Receipts: 2,703 Week ago: 6,864 Year Ago: 3,902
Compared to last week, a lighter test of feeders sold mostly steady early week and sharply higher late week. Slaughter cows and bulls sold steady to 6.00 higher.

FEEDER STEERS:

Medium and Large 1

300-400 lbs.	450.00-495.00	400-500 lbs.	357.50-385.00
400-500 lbs.	402.00-440.00	500-600 lbs.	317.50-377.50
500-600 lbs.	380.00-405.00	600-700 lbs.	300.00-322.00
600-700 lbs.	342.00-378.00		
700-800 lbs.	295.00-337.00		
800-850 lbs.	275.00-285.00		
Load 947 lbs.	266.00		

FEEDER HEIFERS:

Medium and Large 1

FEEDER HOLSTEIN STEERS:

Large 3

500-600 lbs. 211.00-213.00

SLAUGHTER COWS: Breaking and Boning (70-85% lean) 143.00-160.00, high dressing 155.50-169.00; low dressing 134.00-144.00. Lean (85-90%) 124.50-146.00

SLAUGHTER BULLS: Yield Grade 1-2 1165-2465 lbs. 165.00-189.00; high dressing 182.50-214.00; low dressing 159.00-163.00.

BRED COWS: Medium and Large 1-2 2-8 yrs 1080-1390 lbs 2nd and 3rd stage 2100.00-2950.00 per head

COW & CALF PAIRS: Scarce

WEST CENTRAL MISSOURI WEEKLY SUMMARY

(Kingsville, Windsor, Butler)

Receipts: 3,298 Week ago: 6,784 Year ago: 3,561
Compared to last week, steers and heifers uneven from 5.00 lower to 5.00 higher. Slaughter cows and bulls steady to 4.00 higher.

FEEDER STEERS:

Medium and Large 1

300-400 lbs.	435.00-500.00
400-500 lbs.	395.00-463.00
500-600 lbs.	371.00-421.00
600-700 lbs.	344.00-384.00
700-800 lbs.	319.00-330.00
111 hd 909 lbs.	295.00

FEEDER HEIFERS:

Medium and Large 1

300-400 lbs.	410.00-457.50
400-500 lbs.	342.00-410.00
500-600 lbs.	323.00-382.50
600-700 lbs.	286.00-335.00
151 hd 730 lbs.	317.50

SLAUGHTER BULLS: Yield Grade 1-2 1270-2095 lbs. 168.00-198.00; high dressing 196.00-214.00

SLAUGHTER COWS: Breaking and Boning (70-85% lean) 138.00-158.00, high dressing 153.00-172.00. Lean (85-90%) 116.00-145.00

BRED COWS: Medium and Large 1-2 2-8 yrs 1050-1620 lbs 2nd/3rd stage 2150.00-3100.00, 1st stage 1925.00-2400.00 per head

COW & CALF PAIRS: scarce

NORTHEAST MISSOURI WEEKLY SUMMARY

(Bowling Green, Kingdom City, Palmyra)

Receipts: 474 Week ago: 5,435 Year ago: 494
This week's Memorial Holiday week had early week sales shut down with very light receipts for any price test. Slaughter steers and heifers steady to 3.00 higher. Slaughter cows firm to 3.00 higher.

FEEDER STEERS:

Medium and Large 1

600-650 lbs. 346.00-352.00

FEEDER HEIFERS:

Medium and Large 1

450-500 lbs.	395.00-402.50
500-600 lbs.	335.00-385.00
600-650 lbs.	309.00-319.00

SLAUGHTER BULLS: Yield Grade 1-2 1360-2120 lbs. 185.00-195.00; high dressing 201.00-209.00.

SLAUGHTER COWS: Breaking and Boning, (70-85% lean) 147.00-155.00; high dressing 156.00-170.00. Lean (85-90%) 135.00-143.00.

SLAUGHTER STEERS: Choice 2 -3 228.00-231.00. Select and Choice 1-3 225.00.

SLAUGHTER HEIFERS: Choice 2-3 227.50.

BRED COWS: Scarce

COW CALF PAIRS: Scarce

NORTH CENTRAL MISSOURI WEEKLY SUMMARY

(Macon, Unionville, Green City, New Cambria)

Receipts: 1,966 Week ago: 1,965 Year ago: 1,646
No recent test on feeders and cows.

*Some sale barns on a bi-weekly schedule and may not have a sale each week.

FEEDER STEERS:

Medium and Large 1

400-500 lbs.	419.00-420.00
500-600 lbs.	377.50-424.00
600-700 lbs.	348.00-402.00
700-750 lbs.	326.00-339.00
800-900 lbs.	293.75-299.50
900-1000 lbs.	274.00-298.50

FEEDER HEIFERS:

Medium and Large 1

400-500 lbs.	372.00-416.00
500-600 lbs.	333.00-370.00
600-700 lbs.	303.00-332.00
700-750 lbs.	281.50-332.00

SLAUGHTER BULLS: Yield Grade 1-2 1925-2150 lbs. 195.00-195.50

SLAUGHTER COWS: Breaking and Boning (70-85% lean) 135.00-146.50, high dressing 157.00-161.50. Lean (85-90%) 115.00-132.00

BRED COWS: Scarce

COW/CALF PAIRS: Scarce

SOUTHEAST MISSOURI WEEKLY SUMMARY

(Jackson and Farmington) (w/e 5/24/25)

Receipts: 1,915 Week ago: 1,160 Year ago: 1,282
Compared to last week, feeders sold uneven from 14.00 lower to 10.00 higher. Slaughter cows sold steady to 5.00 higher and bulls steady to 1.00 higher.

FEEDER STEERS: Medium and Large 1

300-400 lbs. 425.00-530.00
400-500 lbs. 395.00-480.00
500-600 lbs. 322.00-422.00
600-700 lbs. 291.00-372.00
700-800 lbs. 265.00-325.00
800-850 lbs. 250.00-300.00

FEEDER HEIFERS: Medium and Large 1

300-400 lbs. 365.00-480.00
400-500 lbs. 350.00-402.00
500-600 lbs. 285.00-367.00
600-700 lbs. 265.00-317.00
700-800 lbs. 245.00-280.00
Pkg 807 lbs. 252.00

SLAUGHTER BULLS: Yield
Grade 1-2 1175-2275 lbs ind
177.00, high dressing 170.00-
207.00.

SLAUGHTER COWS: Breaking
and Boning (75-85% lean) 130.00-
142.00; high dressing 140.00-
174.00. Lean (85-90% lean)
100.00-120.00

BRED COWS: Medium and Large
2 2-8 yrs 1265-1550 lbs 2nd stage
2250.00-2600.00 per head

COW & CALF PAIRS: Medium
and Large 2 2-8 yrs 1020-1050 lbs
with <150 lb calves 2250.00-
2850.00 per pair

EAST CENTRAL MISSOURI WEEKLY SUMMARY

(Cuba, Vienna) (w/e 5/24/25)

Receipts: 3,533 Week Ago: 3,375 Year ago: 3,262
Compared to last week, feeders sold steady to 5.00 lower, with several
under 475 lbs up to 12.00 lower. Slaughter cows 2.00-5.00 higher.

FEEDER STEERS: Medium and Large 1

300-400 lbs. 432.00-495.00
400-500 lbs. 392.00-450.00
500-600 lbs. 365.00-411.00
600-700 lbs. 330.00-397.00
700-800 lbs. 317.00-330.50

FEEDER HEIFERS: Medium and Large 1

300-400 lbs. 395.00-460.00
400-500 lbs. 350.00-420.00
500-600 lbs. 312.00-374.00
600-700 lbs. 298.00-330.50
700-750 lbs. 284.00-288.00

SLAUGHTER BULLS: Yield
Grade 1-2 1335-2075 lbs 172.00
-188.00; high dressing 188.50-
208.00; low dressing ind 154.00

SLAUGHTER COWS: Breaking
and Boning, (70-85% lean) 144.00-
173.50; high dressing 153.50-
170.00. Lean (85-90%) 132.00-
148.50

BRED COWS: Medium and
Large 1 >8 yrs 1255 lbs 2nd
stage 2235.00. Medium and
Large 1-2 2-8 yrs 950-1340 lbs
1st to 3rd stage 2200.00-2825.00
per head

COW & CALF PAIRS: Scarce

NORTHWEST MISSOURI WEEKLY SUMMARY

(Tina) (w/e 5/24/25)

Receipts: 1,457 Week Ago: 1,530 Year Ago: 914
Compared to last week, feeder cattle mostly steady. Slaughter cows
and bulls mostly 5.00 higher.

FEEDER STEERS: Medium and Large 1

300-400 lbs. 460.00-473.00
400-500 lbs. 431.00-450.00
500-600 lbs. 385.50-425.00
600-700 lbs. 354.00-387.00
700-750 lbs. 311.00-319.00
Pkg 854 lbs. 284.00
900-1000 lbs. 277.00-285.00

FEEDER HEIFERS: Medium and Large 1

300-400 lbs. 435.00-440.00
400-500 lbs. 360.00-420.00
500-600 lbs. 317.50-360.00
600-700 lbs. 310.00-326.75
Pkg 903 lbs. 243.50

SLAUGHTER BULLS:
Yield Grade 1-2 1460-2235 lbs
174.00-190.00; couple high dress-
ing 200.50-210.00.

SLAUGHTER COWS: Breaking
and Boning, (70-85% lean) 143.00-
159.00; high dressing 155.00-
165.00. Lean (85-90%) 120.00-
132.50.

BRED COWS: Scarce

COW/CALF PAIRS: Scarce

AFTERNOON NATIONAL SLAUGHTER CATTLE REVIEW

So far for Friday, negotiated cash trade has been light on very good demand in Nebraska and the Western Cornbelt. In Nebraska, compared to Thursday, live purchases traded 1.00 higher ranging from 235.00-237.00, mostly at 236.00. The latest established dressed market in Nebraska was on Thursday with dressed purchases from 365.00-370.00. Trade was inactive on moderate demand in the Southern Plains. Not enough purchases in any other feeding region for an adequate market test. The latest established market in the Texas Panhandle was on Thursday with live purchases ranging from 221.00-223.00, mostly at 223.00. The latest established market in Kansas was on Thursday with live purchases at 222.00. The latest established market in the Western Cornbelt was on Thursday with live purchases ranging from 230.00-235.00 and dressed purchases at 371.00.

Negotiated Cash Sales:

Confirmed:	13,581	Week Ago:	4,525	Year Ago:	35,988
Week to date:	74,411	Week Ago:	44,217	Year Ago:	54,509

<u>Live Basis</u>	<u>Steers</u>	<u>Heifers</u>
Over 80% Choice	232.00-237.00 avg 235.62	234.00-236.00 avg 235.76
65-80% Choice	-	-
35-65% Choice	-	-
0-35% Choice	-	-
Total All Grades	232.00-237.00 avg 235.62	234.00-236.00 avg 235.76
<u>Dressed Basis</u>		
Over 80% Choice	367.00-376.00 avg 370.38	367.00-370.00 avg 368.91
65-80% Choice	-	-
35-65% Choice	-	-
0-35% Choice	-	-
Total All Grades	367.00-376.00 avg 370.38	367.00-370.00 avg 368.91

<u>All Beef Type Steers/Heifers</u>	<u>Head</u>	<u>Avg Wt</u>	<u>Price Range</u>	<u>Wtd Avg</u>
Live FOB	10,905	1454.8	222.00-237.00	235.32
Live Del	74	1401.4	235.00-236.00	235.54
Dressed Del	2,201	951.3	367.00-376.00	370.35
Dressed FOB	401	979.8	364.00-370.00	366.94

WEEKLY COMMODITY FUTURES TRENDS

Compared to last week, Live Cattle 0.33 to 1.42 lower, Lean Hogs 2.25 to 3.75 higher, Feeder Cattle 1.23 to 1.65 lower.

Daily Futures Closes

	Mon.	Tues.	Wed.	Thu.	Fri.
Cattle Jun Aug Oct Dec Feb	Holiday	215.12 209.30 207.07 207.57 207.57	213.92 208.17 206.07 206.65 206.62	215.52 210.07 208.15 208.77 208.60	215.47 209.35 207.40 208.17 207.50
Lean Hogs Jun Jul Aug Oct Dec	Holiday	99.10 102.15 102.17 87.00 79.62	100.27 103.30 103.52 87.75 79.97	100.02 102.97 103.40 87.90 80.00	101.32 104.92 105.02 88.92 80.72
Fdr Cattle Aug Sep Oct Nov Jan	Holiday	298.15 297.25 295.35 292.97 288.30	295.62 294.47 292.52 290.30 285.65	299.92 298.85 296.77 294.40 289.60	298.80 297.70 295.70 293.40 288.67
Milk May Jun Jul	Holiday	18.61 19.61 20.16	18.60 19.35 19.93	18.61 19.16 19.52	18.62 19.17 19.54

WEEKLY COMMODITY GRAIN FUTURES TRENDS

Compared to last week, Soybeans 0.18 to 0.24 lower, Wheat 0.09 to 0.10 lower, Corn 0.11 to 0.16 lower, KC Wheat 0.21 to 0.30 lower, Soybean Meal Jul 0.10 higher, others 0.30 to 1.40 lower.

Daily Grain Futures Closes

	Mon.	Tues.	Wed.	Thu.	Fri.
Soybeans					
Jul	Holiday	1062 1/2	1048 1/2	1051 3/4	1041 3/4
Aug		1058	1045 1/4	1048 1/2	1036 3/4
Sep		102	1029 1/2	1030	1018
Nov		1050 3/4	1037 1/2	1037 1/4	1026 3/4
Jan		1064 1/4	1050 3/4	1050 3/4	1040 3/4
Wheat					
Jul	Holiday	528 1/2	530 1/4	534	534
Sep		544 1/4	545 1/2	548 3/4	548 1/4
Dec		567 1/2	568 3/4	571 1/2	571
Mar		588 3/4	589 1/2	592 1/4	591
May		600 3/4	602	604 1/2	602 1/4
Corn					
Jul	Holiday	459 1/2	451	447	444
Sep		433 3/4	429 3/4	427 1/4	423 1/4
Dec		446 1/2	443 1/2	441 1/4	438 1/2
Mar		461 1/4	458 1/4	456 1/4	454
May		470 1/4	467 1/2	465	463
KC Wheat					
May	Holiday	509 1/4	509 1/4	509 1/4	509 1/4
Jul		524 1/2	525 1/4	531 3/4	533 1/4
Sep		539 1/2	539 1/2	545 3/4	547
Dec		562 1/2	561 3/4	567 1/2	568 3/4
Mar		582	581 1/4	586 3/4	587 1/4
SB Meal					
Jul	Holiday	296.30	293.70	296.40	296.30
Aug		300.20	297.60	300.00	300.00
Sep		303.30	300.80	302.90	302.90
Oct		305.20	302.70	304.40	304.40
Dec		309.70	307.20	308.80	308.70

MISSOURI GRAIN WEEKLY TRENDS

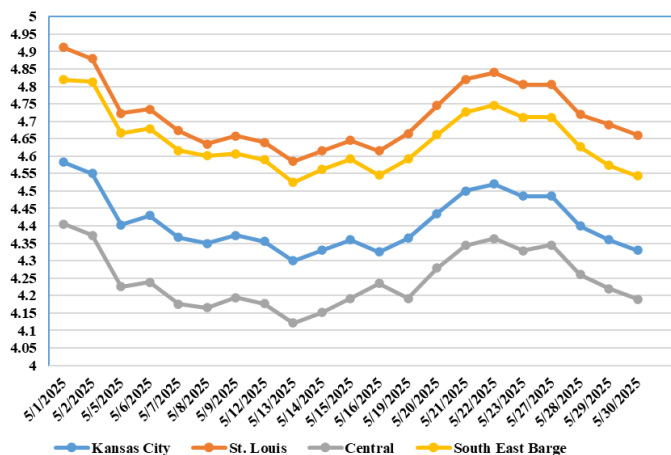
Compared to last week, Soybeans 0.04 to 0.19 lower, Wheat 0.03 to 0.08 lower, Corn 0.13 to 0.15 lower.

Area	#1 Soybeans	#2 Soft Wheat	#2 Corn	#2 Grain Sorghum
Kansas City				
Friday**	10.40-10.85	5.37	4.29-4.67	3.69
Monday	Holiday			
Tuesday	10.43-10.88	5.24	4.30-4.68	3.70
Wednesday	10.29-10.74	5.25	4.21-4.59	3.61
Thursday	10.32-10.77	5.29	4.17-4.55	3.57
Friday	10.21-10.66	5.29	4.14-4.52	3.54
St. Louis				
Friday**	10.73	5.37-5.42	4.80	—
Monday	Holiday			—
Tuesday	10.78	5.29	4.81	—
Wednesday	10.64	5.30	4.72	—
Thursday	10.67	5.34	4.69	—
Friday	10.56	5.34	4.66	—
Central				
Friday**	10.25-10.45	5.02	4.29-4.34	—
Monday	Holiday			—
Tuesday	10.28-10.48	4.89	4.35	—
Wednesday	10.14-10.34	4.90-5.00	4.26	—
Thursday	10.17-10.37	4.94-5.04	4.22	—
Friday	10.06-10.26	4.94-5.04	4.19	—
S.E. MO				
Friday**	10.30-10.75	—	4.67-4.74	—
Monday	Holiday	—		—
Tuesday	10.33-10.78	—	4.68-4.75	—
Wednesday	10.33-10.34	—	4.59-4.66	—
Thursday	10.22-10.67	—	4.55-4.62	—
Friday	10.11-10.56	—	4.52-4.59	—

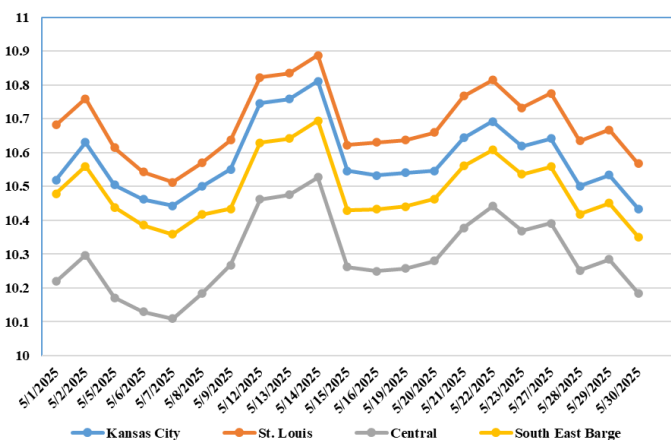
(PRICES PER BUSHEL) *NEW CROP **PREVIOUS WEEK'S PRICES
*Bids calculated using Kansas City, St. Louis, and St. Joseph bids

MONTHLY GRAIN CROP

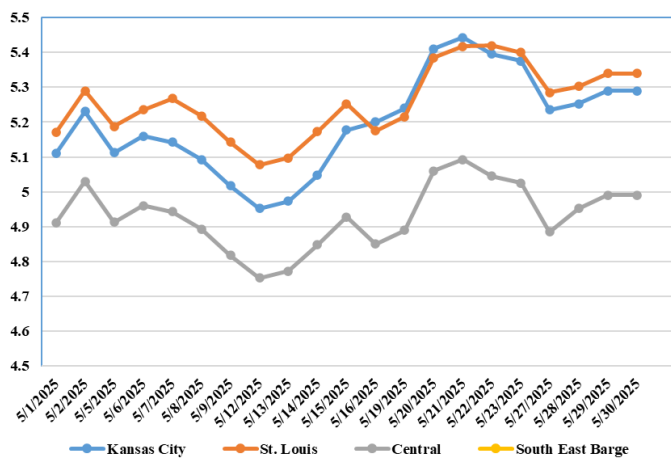
May 2025 Corn Bids



May 2025 Soybean Bids



May 2025 Wheat Bids



*Axis value ranges may be updated to reflect data points.
Only dates in which markets are trading and only current cash bids are represented.

WHOLESALE FEEDSTUFFS PRICES (DOLLARS PER TON-BULK BASIS)

Area	Cottonseed Meal 41%	Soybean Meal 46.5-48%	Corn Gluten Pellets 21%	Wheat Middlings
Kansas City	297.50	274.40	196.00	93.33
St. Louis	292.50	n/a	190.50	87.50

MISSOURI CROP PROGRESS AND CONDITION 5/27/25

There were 3.7 days suitable for fieldwork in the week ending May 25, 2025. Statewide, the average temperature was 62.9 degrees, 3.9 degrees below normal. Precipitation averaged 2.51 inches, 1.49 inches above average. Topsoil moisture supply was rated 2 percent very short, 11 percent short, 75 percent adequate, and 12 percent surplus. Subsoil moisture supply was rated 2 percent very short, 13 percent short, 80 percent adequate, and 5 percent surplus. Corn planted reached 94 percent, compared to the 5-year average of 90 percent. Corn emerged reached 78 percent, compared to the 5-year average of 76 percent. Corn condition was rated 4 percent poor, 20 percent fair, 69 percent good, and 7 percent excellent. Soybeans planted reached 72 percent, compared to the 5-year average of 53 percent. Soybeans emerged reached 48 percent, compared to the 5-year average of 35 percent. Cotton planted reached 72 percent, compared to the 5-year average of 78 percent. Cotton emerged reached 49 percent. Cotton condition was rated 11 percent poor, 40 percent fair, and 49 percent good. Rice planted reached 88 percent, compared to the 5-year average of 89 percent. Rice emerged reached 75 percent, compared to the 5-year average of 76 percent. Rice condition was rated 7 percent poor, 8 percent fair, 83 percent good, and 2 percent excellent. Winter wheat headed reached 96 percent, compared to the 5-year average of 93 percent. Winter wheat condition was rated 4 percent poor, 21 percent fair, 62 percent good, and 13 percent excellent.

	Week Ending			5 yr average
	5/25/25	5/18/25	5/25/24	
Corn Planted	94	87	85	90
Corn Emerged	78	63	69	76
Soybeans Planted	72	59	53	53
Soybeans Emerged	48	30	39	35
Winter Wheat Headed	96	92	97	93
Alfalfa hay 1st cutting	38	28	29	28
Other hay cut	21	12	19	15

MISSOURI WEEKLY HAY SUMMARY 5/29/25

Special Note: Beginning 6/19/25, this report will be published biweekly. Any questions or concerns can be emailed to mymarketnews@usda.gov.

Although it continues to be abnormally to moderately dry in the northern one-third of the state traveling south yields a quite different story. The Springfield area for example has recorded the wettest April/May combination on record. Despite a slow start haying is now running ahead of average with 38 percent of the first cutting of Alfalfa complete, 10 percent ahead of the five year average. Other hay is 21 percent baled, which is 6 percent ahead of the five year average. Although there has not been a lot of new crop hay sold thus far asking prices are mostly steady, supply is moderate and demand is light to moderate. The Missouri Department of Agriculture has a hay directory at <https://apps.mda.mo.gov/haydirectory> or visit the University of Missouri Extension feed stuff finder at <https://feedstufffinder.org>
Alfalfa - Supreme 250.00-300.00, small square 10.00-17.00 per bale
Alfalfa - Premium 175.00-225.00
Alfalfa - Good 150.00-175.00, small square 6.00-10.00 per bale
Alfalfa - Fair 125.00-150.00
Mixed grass - Good/Premium 125.00-200.00
Mixed grass-Fair/Good 80.00-125.00, small square 3.50-8.00 per bale
Mixed grass - Fair 25.00-50.00 per large round bale
Wheat straw - 4.00-7.00 per small square bale

Please Note: The above volumes (tonnage, acres, and bales) listed are for confirmed trades only, it does not include estimated volume (tonnage) for bids or offers to the trade. List your hay for sale at: [Hay Listing Online Form](#). Explanation of Hay Quality Guidelines: [Hay Quality Designation Guidelines](#). Glossary of Terms: [Livestock, Poultry, & Grain Hay Terms](#)

MISSOURI WEEKLY SHEEP/GOAT AUCTION SUMMARY

05/31/25

Receipts: 2,819 2 Weeks Ago: 2,535 Last Year: 1,559

Feeder lambs Medium and Large 1-2 35-50 lbs 192.50-250.00. Small and Medium 1-2 hair 20-50 lbs 172.50-275.00, thin 162.50-220.00.
Slaughter lambs Choice and Prime 1-3 w/s 55-90 lbs 215.00-235.00.
Choice 1-3 w/s pkg 102 lbs 155.00; pkg 127 lbs 132.50. Choice and Prime 1-3 hair 50-100 lbs 215.00-267.50. Choice 1-3 hair 50-75 lbs 202.50-224.00.
Slaughter ewes Utility and Good 1-3 140-255 lbs 102.00-115.00. Cull and Utility 1-2 100-130 lbs 67.50-85.00. Good and Choice 2-3 hair pkg 90 lbs 140.00. Good 2-3 hair 70-140 lbs 125.00-147.50. Utility and Good 1-3 hair 75-185 lbs 90.00-125.00.
Slaughter bucks 1-2 hair 100-145 lbs 112.50-213.00; 155-180 lbs 162.50-182.50.
Replacement ewes Small and Medium 1-2 hair 1-2 yrs 60-90 lbs exp 167.50-195.00; 2-4 yrs 89 lbs exp 157.50; 4-6 yrs 131 lbs exp 217.50.
Families Small and Medium 1-2 2-4 yrs 110 lbs with <20 lb lambs 190.00/fam; 4-6 yrs 90-100 lbs exp with <20 lb lambs 170.00-225.00/fam.
GOATS: Feeder kids Selection 1 20-40 lbs 305.00-355.00; 40-50 lbs 320.00-400.00, fancy 407.50. Selection 2 20-30 lbs 215.00-280.00; 30-50 lbs 225.00-325.00. Selection 3 25-50 lbs 180.00-222.50, pygmies 140.00-167.00.
Slaughter kids Selection 1 50-75 lbs 335.00-415.00. Selection 2 50-60 lbs 245.00-340.00.
Slaughter nannies Selection 1-2 50-70 lbs 117.50-210.00, thin 102.50; 70-80 lbs 117.50-195.00; 80-90 lbs 140.00-202.50, thin 112.50; 90-140 lbs 125.00-215.00; 150-180 lbs 112.50-170.00.
Slaughter bucks Selection 1-2 115-145 lbs 150.00-250.00; 155-195 lbs 210.00-300.00.
Wethers Selection 1-2 pkg 68 lbs 320.00; 90-120 lbs 190.00-355.00.
Wether kids Selection 1 pkg 62 lbs 405.00.
Replacement nannies Selection 1-2 1-2 yrs 58 lbs exp 275.00; 2-4 yrs 62 lbs exp 250.00; 90-110 lbs exp 207.50-255.00; 4-6 yrs 108 lbs exp 212.50.
Selection 1-2 2-4 yrs 115 lbs exp 200.00/hd

Explanatory Notes: Stage - Represents estimated lambing/kidding period (Open, Exp=exposed, Bred, Fall = Sep-Nov, Win = Dec-Feb, Spr = Mar-May, Sum=Jun-Aug; w/s = woolled and shorn; /hd= per head; /fam=per family
All price CWT unless otherwise noted.

MISSOURI DROUGHT MONITOR

Date	None	D0	D1	D2	D3	D4
5/27/25	77.78	19.21	3.01	0	0	0
5/20/25	82.85	14.14	3.01	0	0	0
5/28/24	94.20	5.79	0.01	0	0	0

Reflects percentage of Missouri impacted by drought. D0 Abnormally Dry; D1 Moderate Drought; D2 Severe Drought; D3 Extreme Drought; D4 Exceptional Drought

NATIONAL DIRECT DELIVERED FEEDER PIG REPORT

5/30/25 Receipts: 142,674 Week ago: 126,778 Year Ago: 144,346
Early weaned pigs steady and feeder pigs steady to firm.
Cash 84,870 head 32.00-60.00, weighted average 50.27
Formula 41,954 head 41.72-59.43, weighted average 49.37
Feeder pigs 40 pounds basis: Cash 15,850 head 72.00-87.00, weighted average 82.26

NATIONAL DAILY DIRECT PRIOR DAY HOG REPORTS 5/30/25

BARROWS AND GILTS (Carcass Basis): 3,542 head
Base Carcass Price 88.00-102.00, weighted average 97.80

SOWS (Live Basis): 7,929 head
300-500 lbs. 25.00-77.00
Over 500 lbs. 51.00-77.25

MISSOURI WEEKLY DIRECT SLAUGHTER CATTLE REPORT 5/30/25

Weekly Receipts: 200 Week ago: 240 Year ago: 320
Trading as of Friday morning, flat dressed sales 5.00 higher, grid sales 6.00 higher

LIVE STEERS & HEIFERS: No sales reported
DRESSED STEERS & HEIFERS: 2 loads Wed 365.00

GRADE AND EIGHT (Grid): 3 loads Thur 373.00

Click here for the current [National Crop Progress](#)
Click here for the current [Missouri Crop Progress](#)
The current hay directory can be found at: [Hay Directory](#).