

Weekly Market Summary

Published by:
Missouri Department of Agriculture
Ag Business Development Division
Market News Program



Chris Chinn, Director
Jill Wood, Division Director
Tony Hancock, Editor
<http://www.ams.usda.gov/marketnews.htm>
<http://www.ams.usda.gov/marketnews.htm>

Michael Kehoe, Governor

Volume XLV, Number 23 ♦ P.O. Box 630, Jefferson City, MO 65102 ♦ (573) 751-4211 ♦ Mon, June 9, 2025

MISSOURI WEEKLY FEEDER CATTLE WEIGHTED AVERAGE REPORT

Feeder Cattle Receipts: 39,834 Week ago: 8,426 Year ago: 40,082
Steers and Heifers Medium and Large 1—Weighted average weights and prices

STEERS: Medium and Large 1

280 lbs.	514.69	474 lbs.	429.11	671 lbs.	346.38	876 lbs.	297.99
330 lbs.	478.80	522 lbs.	407.58	722 lbs.	329.09	917 lbs.	281.68
376 lbs.	459.75	572 lbs.	388.48	774 lbs.	321.94	974 lbs.	275.26
425 lbs.	446.90	621 lbs.	368.14	825 lbs.	306.89	1023 lbs.	260.80

HEIFERS: Medium and Large 1

330 lbs.	427.78	520 lbs.	360.27	727 lbs.	311.10	921 lbs.	246.54
379 lbs.	422.12	572 lbs.	343.81	769 lbs.	307.20	1002 lbs.	252.00
427 lbs.	399.68	621 lbs.	326.72	822 lbs.	276.81		
471 lbs.	385.29	680 lbs.	315.78	864 lbs.	263.72		

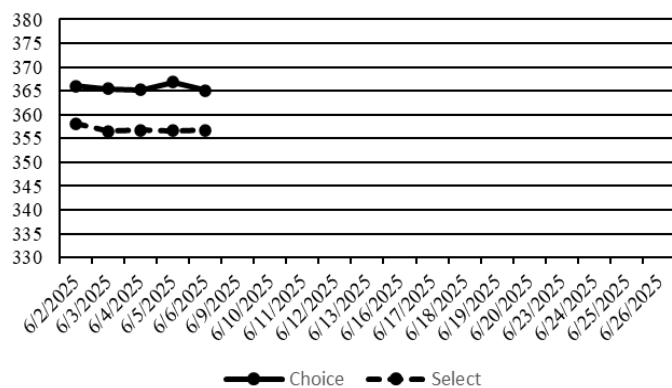
MISSOURI STEER (HEIFER) STOCKER FORMULA 6/9/2025

Monday's Missouri Stocker formula consists of 9,775 (8,742) head with a weighted average weight of 546.95 (532.32) lbs. and a price value of 384.46 (348.80), 6.37 higher (8.83 higher) than a week ago. This is a rolling seven day calculated weighted value which combines all Feeder Steers reported by MDA/USDA Market News Service weighing from 400-649 lbs. in the Medium and Large 1 and Medium and Large 1-2 frame and muscle classifications, including all comment cattle except Brahman X. Heifer values are in parentheses.

NATIONAL BOXED BEEF CUTOUT VALUES

DATE	CHOICE	SELECT	TOTAL LOADS
6/2	366.00	358.11	122
6/3	365.44	356.52	115
6/4	365.16	356.72	123
6/5	366.85	356.61	97
6/6	365.08	356.73	105
5 Day Simple Average	365.71	356.94	

Boxed Beef Cuts June 2025



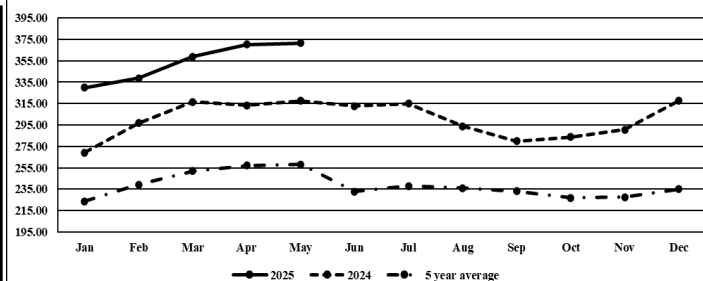
*Axis value ranges may be updated to reflect data points.

WEEKLY LIVESTOCK SLAUGHTER 6/7/25

	CATTLE	HOGS	SHEEP
Week to Date:	582,000	2,363,000	38,000
Last Week:	477,000	2,143,000	32,000
Last Year:	609,797	2,415,772	35,853

The Weekly Market Summary, as well as historical summaries, are available on our website <https://agmarketnews.mo.gov/summaries>
Market News Hotline: 1-573-522-9244
Check out the latest updates on our YouTube Channel: [MDA Market News](https://www.youtube.com/channel/UCM4M4M4M4M4M4M4M4M4M4M4)

Missouri Stocker Formula - Steers



*Graph is updated the first Monday of each month. Axis value ranges may be updated to reflect data points.

MISSOURI WEEKLY CATTLE AUCTION SUMMARY

Total Receipts: 39,834 Week Ago: 10,776 Year Ago: 45,354

No comparison available with last week due to the light offering from the holiday week. Feeders started this week mixed with some spots trending lower on calves although yearlings were firm to higher. As the week went on however the markets continued to gain strength seemingly each day. After the Memorial Day holiday typically the calf market finds some pressure as heat sets in, and grass buying is limited. That seemed to be the case early week but overall fundamentals of the lack of cattle across all sectors may prove that to be wrong this year. Buying interest seemed to pick up as the week progressed. Fed cattle trade at the current time is leading the market and other sectors are following along to keep in line. As of the latest crop progress and condition report MO has some of the best pastures of any of the major cattle states. Hay crop looking to be very good although rains and wet conditions are complicating harvest. The CME feed cattle index set a new record once again this week with the most recent value at 306.16, based roughly on an 800 lb. steer through the auction in the twelve-state feeding region. The market for both cull cows and bulls as well as breeding stock is also at record levels. A few stick out sales this week included 37 head of 495 lb. steers at New Cambria Livestock Auction which sold for 446.00. Lolli Brothers Livestock Market sold a lot of 521 lb. steers for 439.00. South Central Regional Stockyards sold 32 head of 614 lb. steers for 390.00. Kingsville Livestock Auction sold 147 head of 752 lb. steers for 347.00. Callaway Livestock Center sold 120 head of 857 lb. steers at 316.10. A load of 918 lb. steers at Joplin Regional Stockyards sold for 285.00. Lolli Brothers Livestock Market sold 4 loads of heifers 723-738 lbs. all for 322.10. Boxed beef cutout values were mixed for the week, choice closed at 365.08, down 1.26 and Select closed at 356.73, up 0.08 compared to last Friday. Negotiated feedlot sales as of the 2:00 cutoff time for Friday afternoons report totaled just over 66K head for the week. Weighted average prices will once again set a new record high following this week's trade as prices were sharply higher. Live prices in the south 8.00 to 12.00 higher 230.00-235.00, in the north 3.00 to 10.00 higher 240.00-244.00, and dressed sales were 10.00 to 15.00 higher mostly at 380.00. The Missouri Stocker formula consists of 9775 head with a weighted average weight of 546.95 lbs. and a price value of 384.46, 6.37 higher than last week. The steer/heifer spread is 35.66 per cwt.

SOUTHWEST MISSOURI WEEKLY SUMMARY

(Joplin and Springfield)

Receipts: 16,330 Week ago: 2,335 Year Ago: 16,135
Compared to last week's limited trade, steers and heifers steady to 5.00 higher, however there were some lightweight feeders weak to 10.00 lower early week. Slaughter cows and bulls steady to 2.00 higher, spots 5.00 higher.

FEEDER STEERS: Medium and Large 1

300-400 lbs.	425.00-510.00
400-500 lbs.	400.00-460.00
500-600 lbs.	364.00-410.00
600-700 lbs.	328.00-378.00
700-800 lbs.	295.00-338.00
800-900 lbs.	289.00-301.00
900-1000 lbs.	272.00-285.00
1000-1100 lbs.	261.00-262.00

FEEDER HEIFERS: Medium and Large 1

300-400 lbs.	405.00-450.00
400-500 lbs.	365.00-430.00
500-600 lbs.	315.00-382.00
600-700 lbs.	299.00-340.00
700-800 lbs.	280.00-320.00
800-900 lbs.	261.50-283.00
13 hd 927 lbs.	255.50
263 hd 1002 lbs.	252.00

FEEDER HOLSTEIN STEERS Large 3

Scarce

Scarce

BRED COWS: Medium and Large 1 2-8 yrs 930-1700 lbs 2nd/3rd stage 2650.00-4300.00, 1st stage 2400.00-3400.00. Medium and Large 1-2 2-8 yrs 825-1250 lbs 1st/2nd stage 1850.00-2900.00, 2nd/3rd stage 2000.00-3100.00; >8 yrs 1050-1465 lbs 2nd/3rd stage 1750.00-2800.00 per head
BRED HEIFERS: Medium and Large 1 <2 yrs 930-1100 lbs 2nd/3rd stage 3500.00-3850.00; 2-4 yrs 940-1285 lbs 2nd/3rd stage 2600.00-3900.00 per head

SLAUGHTER COWS: Breaking and Boning (70-85% lean) 139.00-162.50; high dressing 155.00-169.00; low dressing 125.00-150.00. Lean (85-90%) 125.00-150.00.
SLAUGHTER BULLS: Yield Grade 1-2 1160-2370 lbs. 174.00-209.00; high dressing 195.00-230.50; low dressing 154.00-175.00

COW & CALF PAIRS: Medium and Large 1 2-8 yrs 1150-1865 lbs with baby to >300 lb calves 3300.00-4300.00; 2-8 yrs 1580-1680 lbs rebred 1st or 2nd stage with >300 lb calves 4400.00-4600.00. Medium and Large 1-2 2-8 yrs 990-1650 lbs with baby to >300 lb calves 2000.00-3800.00; >8 yrs 1280-1500 lbs with baby to >300 lb calves 2700.00-3250.00; >8 yrs 1375-1500 lbs rebred 1st or 2nd stage with 150 to >300 lb calves 3300.00-3600.00 per pair

SOUTH CENTRAL MISSOURI WEEKLY SUMMARY

(West Plains, Phillipsburg)

Receipts: 4,813 Week ago: 2,703 Year Ago: 4,564
Compared to last week, steers and heifers steady to 8.00 higher, spots up to 15.00 higher. Slaughter cows and bulls steady to 4.00 higher.

FEEDER STEERS: Medium and Large 1

300-400 lbs.	450.00-485.00
400-500 lbs.	405.00-455.00
500-600 lbs.	365.00-415.00
600-700 lbs.	344.00-378.00
700-800 lbs.	315.50-340.00
800-900 lbs.	284.00-304.00
25hd 903 lbs.	281.00

FEEDER HEIFERS: Medium and Large 1

300-400 lbs.	405.00-460.00
400-500 lbs.	368.00-422.50
500-600 lbs.	330.00-360.00
600-700 lbs.	306.00-340.00
700-750 lbs.	295.00-310.00
30 hd 862 lbs.	262.00
Pkg 911 lbs.	231.00

FEEDER HOLSTEIN STEERS: Large 3

Scarce

SLAUGHTER COWS: Breaking and Boning (70-85% lean) 144.00-160.00, high dressing 159.00-166.00; low dressing 131.00-148.00. Lean (85-90%) 123.00-145.00

SLAUGHTER BULLS: Yield Grade 1-2 1115-2210 lbs. 169.50-192.00; high dressing 197.00-219.00; low dressing 150.00-170.00.

BRED COWS: Medium and Large 1 2-8 yrs 870-1400 lbs 2nd/3rd stage 2450.00-2750.00, 1st stage 2350.00-2400.00; >8 yrs 1084-1360 lbs 2nd/3rd stage 2300.00-2400.00 per head. Medium and Large 1-2 2-8 yrs 702-1415 lbs 2nd/3rd stage 2000.00-2750.00, 1st stage 1650.00-2250.00 per head

COW & CALF PAIRS: Medium and Large 1 2-8 yrs 963-1399 lbs with 150 to >300 lb calves 2900.00-3525.00. Medium and Large 1-2 2-8 yrs 960-1535 lbs with <150 to 300 lb calves 1975.00-2650.00; 2-8 yrs 989-1324 lbs rebred 1st to 2nd stage with <150 to 300 lb calves 2600.00-3350.00 per pair

WEST CENTRAL MISSOURI WEEKLY SUMMARY

(Kingsville, Windsor, Butler)

Receipts: 6,734 Week ago: 3,298 Year ago: 6,852
Compared to last week, steers and heifers 3.00 to 12.00 higher. Slaughter cows steady to 5.00 higher.

FEEDER STEERS: Medium and Large 1

300-400 lbs.	432.50-488.00
400-500 lbs.	395.00-471.00
500-600 lbs.	377.00-424.00
600-700 lbs.	349.00-390.00
700-800 lbs.	311.00-349.00
800-900 lbs.	304.00-315.00

FEEDER HEIFERS: Medium and Large 1

300-400 lbs.	407.50-475.00
400-500 lbs.	376.00-417.00
500-600 lbs.	335.00-388.00
600-700 lbs.	315.00-350.00
700-800 lbs.	309.00-319.00

SLAUGHTER BULLS: Yield Grade 1-2 1205-2250 lbs. 183.00-203.00; high dressing 204.00-216.00

SLAUGHTER COWS: Breaking and Boning (70-85% lean) 142.00-159.00, high dressing 155.50-176.00. Lean (85-90%) 128.00-148.00

BRED COWS: Medium and Large 1-2 2-8 yrs 1205-1400 lbs 2nd/3rd stage 2175.00-3325.00, 1st stage 2300.00-2750.00 per head

COW & CALF PAIRS: scarce

NORTHEAST MISSOURI WEEKLY SUMMARY

(Bowling Green, Kingdom City, Palmyra)

Receipts: 6,577 Week ago: 474 Year ago: 6,464
Compared to two weeks ago, steers under 650 lbs steady to firm, several pot loads over 700 lbs sharply higher undertone. Heifer calves under 600 lbs 5.00 to 12.00 higher, over 600 lbs firm to 6.00 higher. Slaughter cows steady to 3.00 higher.

FEEDER STEERS: Medium and Large 1

300-400 lbs.	490.00-525.00
400-500 lbs.	436.00-475.00
500-600 lbs.	379.00-432.00
600-700 lbs.	342.00-391.00
700-800 lbs.	319.00-336.00
800-900 lbs.	314.25-316.10

FEEDER HEIFERS: Medium and Large 1

300-400 lbs.	405.00-442.50
400-500 lbs.	377.50-417.50
500-600 lbs.	340.00-387.50
600-700 lbs.	306.00-345.00

SLAUGHTER BULLS: Yield Grade 1-2 1385-2505 lbs. 188.00-211.00; high dressing 202.00-215.00.

SLAUGHTER COWS: Breaking and Boning, (70-85% lean) 145.00-162.00; high dressing 156.00-180.00. Lean (85-90%) 133.00-149.00.

SLAUGHTER STEERS: Choice 2-3 231.50-237.00. Select and Choice 2-3 223.00-229.00. Select 1-2 218.00-222.00. Select 1-3 227.00.

SLAUGHTER HEIFERS: Choice 2-3 229.00-235.00. Select and Choice 2-3 225.00-227.50. Select 1-2 213.00. Select 1-3 225.00.

BRED COWS: Medium and Large 1 2-8 yrs 1126-1411 lbs. 2nd/3rd stage 3050.00-3600.00. Medium and Large 1-2 2-4 yrs 1053-1280 lbs 2nd/3rd stage 330.00-3650.00 per head

COW CALF PAIRS: Medium and Large 1-2 2-8 yrs 950-1600 lbs with 150-300 lb calves 3400.00-3900.00; 2-8 yrs 1050-1100 lbs rebred 1st stage with >300 lb calves 4150.00-4200.00 per pair

NORTH CENTRAL MISSOURI WEEKLY SUMMARY

(Macon, Unionville, Green City, New Cambria)

Receipts: 5,236 Week ago: 1,966 Year ago: 3,718
Compared to the most recent sales, feeders mostly steady to 5.00 higher, spots 10.00 higher. Slaughter cows steady to firm.

*Some sale barns on a bi-weekly schedule and may not have a sale each week.

FEEDER STEERS: Medium and Large 1

400-500 lbs.	395.00-492.00
500-600 lbs.	375.00-453.00
600-700 lbs.	334.00-393.50
700-800 lbs.	315.00-346.25
850-900 lbs.	298.00-303.00
Pkg 903 lbs.	288.50

FEEDER HEIFERS: Medium and Large 1

300-400 lbs.	400.00-467.50
400-500 lbs.	367.00-434.00
500-600 lbs.	335.00-384.00
600-700 lbs.	303.00-340.00
700-800 lbs.	315.00-322.10

SLAUGHTER BULLS: Yield Grade 1-2 1425-2350 lbs. 181.00-210.00; high dressing 207.00-220.00

SLAUGHTER COWS: Breaking and Boning (70-85% lean) 142.00-162.00, high dressing 158.00-174.00. Lean (85-90%) 127.00-149.00

BRED COWS: Scarce

COW/CALF PAIRS: Scarce

SOUTHEAST MISSOURI WEEKLY SUMMARY

(Jackson and Farmington)

Receipts: 1,650 Week ago: 1,915 Year ago: 2,282
Compared to two weeks ago, steers and heifers uneven from 13.00 lower to 5.00 higher. Slaughter cows steady to 10.00 higher. Slaughter bulls steady to 3.00 higher.

FEEDER STEERS: Medium and Large 1

300-400 lbs. 440.00-520.00
400-500 lbs. 395.00-450.00
500-600 lbs. 337.00-417.00
600-700 lbs. 297.00-355.00
700-800 lbs. 277.00-320.00
Pkg 815 lbs. 285.00

FEEDER HEIFERS: Medium and Large 1

300-400 lbs. 355.00-425.00
400-500 lbs. 327.00-390.00
500-600 lbs. 290.00-367.00
600-700 lbs. 270.00-322.00
700-750 lbs. 245.00-274.00
800-900 lbs. 254.00-260.00

SLAUGHTER BULLS: Yield
Grade 1-2 1140-2145 lbs 150.00-
175.00; high dressing 175.00-
210.00.

SLAUGHTER COWS: Breaking
and Boning (75-85% lean) 129.00-
147.00; high dressing 141.00-
175.00. Lean (85-90% lean)
126.00-150.00

BRED COWS: Medium and Large
2 2-8 yrs 1110-1610 lbs 2nd/3rd
stage 1800.00-2500.00; >8 yrs
1250-1415 lbs 2nd/3rd stage
2000.00-2100.00 per head

COW & CALF PAIRS: Medium
and Large 2 >8 yrs 1150-1300 lbs
with 150-300 lb calves 2400.00-
3700.00 per pair

EAST CENTRAL MISSOURI WEEKLY SUMMARY

(Cuba, Vienna)

Receipts: 3,817 Week Ago: 3,533 Year ago: 3,227
Compared to two weeks ago, steers and heifer steady to 15.00 higher.
Slaughter cows steady to 4.00 higher.

FEEDER STEERS: Medium and Large 1

300-400 lbs. 451.00-525.00
400-500 lbs. 400.00-474.00
500-600 lbs. 368.00-439.00
600-700 lbs. 322.50-394.50
700-800 lbs. 307.00-347.00
800-850 lbs. 290.00-293.00

FEEDER HEIFERS: Medium and Large 1

300-400 lbs. 400.00-450.00
400-500 lbs. 359.00-438.00
500-600 lbs. 320.00-375.00
600-700 lbs. 297.00-354.00
700-800 lbs. 272.00-302.50

SLAUGHTER BULLS: Yield
Grade 1-2 1335-2075 lbs 172.00
-188.00; high dressing 188.50-
208.00; low dressing ind 154.00

SLAUGHTER COWS: Breaking
and Boning, (70-85% lean) 144.00-
162.00; high dressing 154.00-
173.00. Lean (85-90%) 130.00-
150.00

BRED COWS: Medium and
Large 1-2 2-8 yrs 940-1385 lbs
1st to 3rd stage 2175.00-2875.00;
>8 yrs 1082-1145 lbs 2nd stage
1900.00-2050.00 per head

COW & CALF PAIRS: Scarce

NORTHWEST MISSOURI WEEKLY SUMMARY

(Tina)

Receipts: 2,212 Week Ago: 1,457 Year Ago: 2,112
Compared to two weeks ago, feeders 500-550 lbs up to 15.00 higher,
other classes and weights firm to higher undertone. Slaughter cows and
bulls mostly steady to 5.00 higher, except lean cow s 10.00 to 15.00
higher.

FEEDER STEERS: Medium and Large 1

350-400 lbs. 465.00-468.00
400-500 lbs. 428.00-448.00
500-600 lbs. 383.00-433.00
600-700 lbs. 358.00-388.00
700-800 lbs. 300.00-333.50
127 hd 876 lbs. 294.60

FEEDER HEIFERS: Medium and Large 1

300-400 lbs. 400.00-433.00
400-500 lbs. 367.00-401.00
500-600 lbs. 357.50-382.00
600-700 lbs. 316.00-339.00

SLAUGHTER BULLS:

Yield Grade 1-2 1140-2005 lbs
176.00-201.00; high dressing
201.00-220.50; low dressing
166.00-176.00.

SLAUGHTER COWS: Breaking
and Boning, (70-85% lean) 140.00-
156.00; high dressing 152.00-
165.50. Lean (85-90%) 131.00-
143.00.

BRED COWS: Scarce

COW/CALF PAIRS: Scarce

AFTERNOON NATIONAL SLAUGHTER CATTLE REVIEW

So far for Friday, negotiated cash trade has been light on very good demand in all feeding regions. In the Texas Panhandle, there have been a few live purchases at 232.00, but not enough for an adequate market test. The last market test in the Texas Panhandle was on Thursday at 232.00. In Kansas, live purchases have been 5.00 higher at 235.00 compared to Thursday. For Nebraska, compared to Thursday, live purchases have been 2.00-3.00 higher from 242.00-244.00. The latest dressed market in Nebraska was Thursday at 380.00. Compared to Thursday, live and dressed purchases in the Western Cornbelt have been mostly steady at 240.00 and 380.00, respectively.

Negotiated Cash Sales:

Confirmed:	15,551	Week Ago:	13,581	Year Ago:	8,888
Week to date:	66,243	Week Ago:	74,411	Year Ago:	27,236

<u>Live Basis</u>	<u>Steers</u>	<u>Heifers</u>
Over 80% Choice	238.00-244.00, avg 241.79	238.00-244.00, avg 241.97
65-80% Choice	242.00	-
35-65% Choice	232.00-235.00, avg 234.43	232.00-235.00, avg 234.67
0-35% Choice	-	-
Total All Grades	232.00-244.00, avg 239.97	232.00-244.00, avg 236.73
<u>Dressed Basis</u>		
Over 80% Choice	380.00-385.00, avg 382.75	380.00
65-80% Choice	-	-
35-65% Choice	-	-
0-35% Choice	-	-
Total All Grades	380.00-385.00, avg 385.75	380.00

<u>All Beef Type</u> <u>Steers/Heifers</u>	<u>Head</u>	<u>Avg Wt</u>	<u>Price Range</u>	<u>Wtd Avg</u>
Live FOB	12,169	1389.0	232.00-245.00	240.23
Live Del	185	1398.4	239.00-242.00	240.29
Dressed Del	2,386	950.1	377.00-386.00	381.48
Dressed FOB	811	909.3	384.00	384.00

WEEKLY COMMODITY FUTURES TRENDS

Compared to last week, Live Cattle 6.25 to 10.83 higher, Lean Hogs 1.30 to 4.38 higher, Feeder Cattle 9.93 to 11.42 higher.

Daily Futures Closes

	Mon.	Tues.	Wed.	Thu.	Fri.
Cattle					
Jun	216.55	215.97	218.40	222.90	226.30
Aug	211.00	209.75	212.35	216.82	218.87
Oct	209.20	207.92	210.60	213.97	215.52
Dec	209.80	208.45	211.10	213.90	214.95
Feb	209.75	208.45	210.82	213.20	213.75
Lean Hogs					
Jun	100.85	100.22	99.97	100.85	102.62
Jul	104.97	104.57	105.02	104.80	107.10
Aug	105.90	106.45	107.50	107.05	109.40
Oct	89.30	89.85	91.12	91.07	92.57
Dec	81.12	81.50	82.17	82.57	83.67
Fdr Cattle					
Aug	301.75	301.22	303.87	309.15	310.15
Sep	300.90	300.42	303.15	308.30	309.12
Oct	299.07	298.65	301.27	306.07	306.90
Nov	296.90	296.57	299.17	303.50	304.30
Jan	292.22	291.95	294.50	298.05	298.60
Milk					
Jun	19.10	18.70	18.71	18.74	18.77
Jul	19.67	19.22	18.89	18.64	18.84
Aug	19.59	19.30	19.18	19.01	19.33

WEEKLY COMMODITY GRAIN FUTURES TRENDS

Compared to last week, Soybeans 0.09 to 0.15 higher, Wheat 0.16 to 0.20 higher, Corn Jul 0.02 lower, others 0.10 higher, Soybean Meal nearby 0.30 to 0.60 lower, Sep and Oct 0.40 to 1.10 higher.

Daily Grain Futures Closes

	Mon.	Tues.	Wed.	Thu.	Fri.
Soybeans					
Jul	1033 1/2	1040 3/4	1045	1051 3/4	1057 1/4
Aug	1027 1/4	1034 1/4	1038 3/4	1046 1/2	1050 3/4
Sep	1007 3/4	1012 3/4	1017 1/4	1025 3/4	1028 1/4
Nov	1017	1021 1/2	1025	1033 1/4	1037
Jan	1031 1/2	1035 3/4	1039	1047	1050 3/4
Wheat					
Jul	539	536	543 1/4	545 1/2	554 3/4
Sep	553 1/4	550 1/2	557 1/4	559 3/4	568 3/4
Dec	575	572 3/4	579	581	589 3/4
Mar	594 1/2	592 1/2	598 1/4	600 1/2	608 1/4
May	606	603 3/4	609	611 1/4	619
Corn					
Jul	438 1/4	438 1/2	438 3/4	439 1/2	442 1/2
Sep	420 3/4	423 1/2	428	431 1/2	433 1/4
Dec	435 3/4	438 1/2	443 3/4	448 1/4	449 1/4
Mar	451 3/4	454 1/4	459 1/4	464	464 1/4
May	461	463 1/4	468 1/4	472 3/4	473 1/4
KC Wheat					
Jul	539 3/4	536 3/4	540 1/2	542 1/2	549 1/4
Sep	553 1/2	550 1/2	554	555 1/2	562 1/2
Dec	575	572 1/4	575 1/2	576 3/4	583 3/4
Mar	593 1/2	591 1/4	594 1/2	596 1/4	602 3/4
May	603 1/4	601 1/2	604 3/4	607 1/4	613 1/2
SB Meal					
Jul	293.90	294.50	297.10	297.10	295.70
Aug	297.70	298.00	300.50	300.80	299.50
Sep	300.60	300.70	302.90	303.50	302.60
Oct	302.30	302.20	304.30	305.20	304.80
Dec	306.80	306.50	308.60	309.70	309.80

MISSOURI GRAIN WEEKLY TRENDS

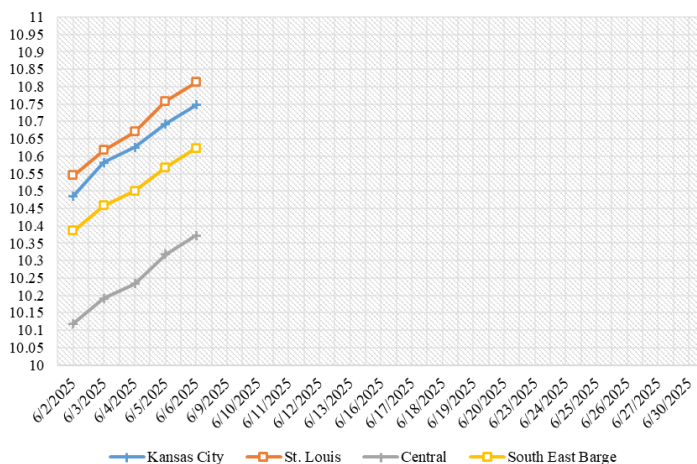
Compared to last week, Soybeans 0.21 to 0.41 higher, Wheat 0.21 to 0.28 higher, Corn 0.01 lower to 0.37 higher, Sorghum no trend due to lack of bids.

Area	#1 Soybeans	#2 Soft Wheat	#2 Corn	#2 Grain Sorghum
Kansas City				
Friday**	10.21-10.66	5.29	4.14-4.52	3.54
Monday	10.34-10.64	5.34	4.46	3.48
Tuesday	10.46-10.71	5.31	4.47	3.49
Wednesday	10.50-10.75	5.38	4.47	3.49
Thursday	10.57-10.82	5.41	4.48	3.50
Friday	10.62-10.87	5.50	4.51	3.53
St. Louis				
Friday**	10.56	5.34	4.66	—
Monday	10.55	5.39-5.42	4.61	—
Tuesday	10.62	5.36-5.39	4.62	—
Wednesday	10.67	5.43-5.46	4.61	—
Thursday	10.76	5.46-5.49	4.61	—
Friday	10.81	5.60-5.62	4.65	—
Central				
Friday**	10.06-10.26	4.94-5.04	4.19	—
Monday	9.99-10.19	4.89-5.09	4.13-4.18	—
Tuesday	10.06-10.26	4.86-5.06	4.14-4.19	—
Wednesday	10.10-10.30	4.93-5.13	4.14-4.19	—
Thursday	10.22-10.37	4.96-5.16	4.15-4.20	—
Friday	10.27-10.42	5.05-5.35	4.18-4.23	—
S.E. MO				
Friday**	10.11-10.56	—	4.52-4.59	—
Monday	10.29-10.49	—	4.46-4.53	—
Tuesday	10.36-10.56	—	4.47-4.54	—
Wednesday	10.40-10.60	—	4.47-4.54	—
Thursday	10.47-10.67	—	4.48-4.55	—
Friday	10.52-10.72	—	4.51-4.58	—

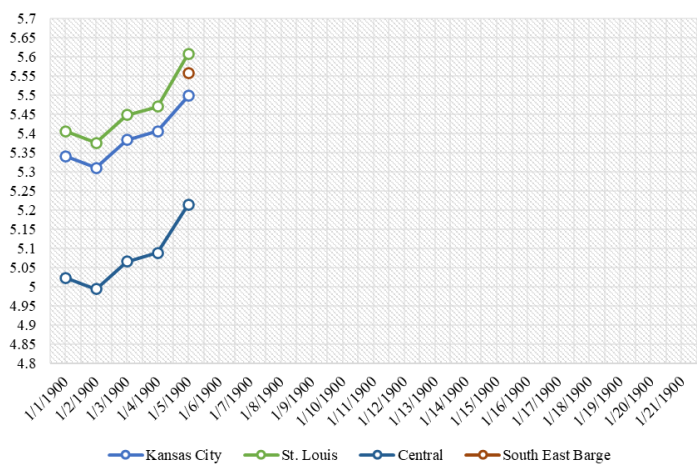
(PRICES PER BUSHEL) *NEW CROP **PREVIOUS WEEK'S PRICES
*Bids calculated using Kansas City, St. Louis, and St. Joseph bids

MONTHLY GRAIN CROP

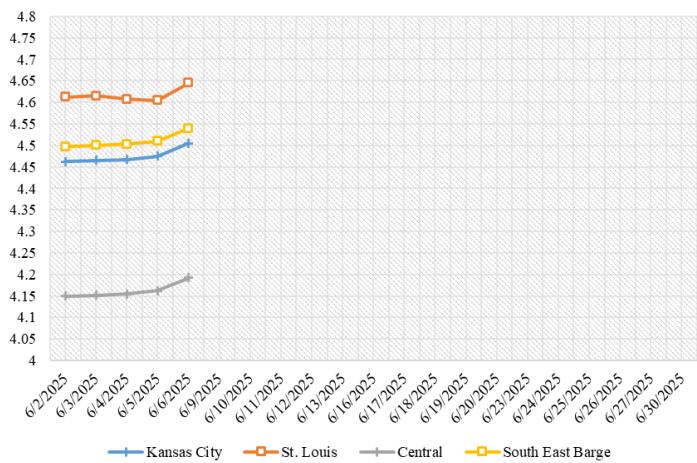
June 2025 Soybean Bids



June 2025 Wheat Bids



June 2025 Corn Bids



*Axis value ranges may be updated to reflect data points.
Only dates in which markets are trading and only current cash bids are represented.

WHOLESALE FEEDSTUFFS PRICES (DOLLARS PER TON-BULK BASIS)

Area	<u>Cottonseed Meal 41%</u>	<u>Soybean Meal 46.5-48%</u>	<u>Corn Gluten Pellets 21%</u>	<u>Wheat Middlings</u>
Kansas City	297.50	275.10	196.00	93.33
St. Louis	292.50	n/a	191.00	87.50

MISSOURI CROP PROGRESS AND CONDITION 6/2/25

There were 4.4 days suitable for fieldwork in the week ending June 1, 2025. Topsoil moisture supply was rated 3 percent very short, 15 percent short, 72 percent adequate, and 10 percent surplus. Subsoil moisture supply was rated 3 percent very short, 16 percent short, 72 percent adequate, and 9 percent surplus. Corn planted reached 97 percent, compared to the 5-year average of 94 percent. Corn emerged reached 86 percent, compared to the 5-year average of 85 percent. Corn condition was rated 1 percent very poor, 4 percent poor, 21 percent fair, 69 percent good, and 5 percent excellent. Soybeans planted reached 79 percent, compared to the 5-year average of 63 percent. Soybeans emerged reached 60 percent, compared to the 5-year average of 47 percent. Soybean condition was rated 1 percent very poor, 3 percent poor, 27 percent fair, 66 percent good, and 3 percent excellent. Rice emerged reached 85 percent, compared to the 5-year average of 85 percent. Rice condition was rated 5 percent poor, 17 percent fair, 76 percent good, and 2 percent excellent. Winter wheat headed reached 98 percent, compared to the 5-year average of 97 percent. Winter wheat harvested reached 1 percent. Winter wheat condition was rated 4 percent poor, 21 percent fair, 65 percent good, and 10 percent excellent.

	Week Ending			
	6/1/24	5/25/25	6/1/25	5 yr average
Corn Planted	92	94	97	94
Corn Emerged	79	78	86	85
Soybeans Planted	66	72	79	63
Soybeans Emerged	50	48	60	47
Winter Wheat Headed	99	96	98	97
Winter Wheat Harvested	5	-	1	1
Alfalfa hay 1st cutting	51	38	55	45
Other hay cut	32	21	29	25

OILSEED CRUSH, PRODUCTION, CONSUMPTION, STOCKS

Soybeans crushed for crude oil was 6.07 million tons (202 million bushels) in April 2025, compared with 6.20 million tons (207 million bushels) in March 2025 and 5.33 million tons (178 million bushels) in April 2024. Crude oil produced was 2.40 billion pounds, down 3 percent from March 2025 but up 15 percent from April 2024. Soybean once refined oil production at 1.75 billion pounds during April 2025 decreased 7 percent from March 2025 but increased 2 percent from April 2024.

GRAIN CRUSHINGS AND CO PRODUCTS

Total corn consumed for alcohol and other uses was 475 million bushels in April 2025. Total corn consumption was down 6 percent from March 2025 but up 1 percent from April 2024. April 2025 usage included 91.7 percent for alcohol and 8.3 percent for other purposes. Corn consumed for beverage alcohol totaled 3.36 million bushels, down 20 percent from March 2025 and down 19 percent from April 2024. Corn for fuel alcohol, at 426 million bushels, was down 6 percent from March 2025 but up 1 percent from April 2024. Corn consumed in April 2025 for dry milling fuel production and wet milling fuel production was 91.5 percent and 8.5 percent, respectively.

MISSOURI WEEKLY HAY SUMMARY 6/5/25

Special Note: Beginning 6/19/25, this report will be published biweekly. Any questions or concerns can be emailed to mymarketnews@usda.gov. Much of the state received moisture this week, including the northern third, however it did not arrive soon enough in the week to be reflected in this week's drought monitor. As of the latest crop condition report, Missouri currently has some of best pastures in the nation with 87% rated as good to excellent. Hay harvest for both Alfalfa and other types of hay is running just slightly ahead of the 5-yr average. It has been quite a challenge to get hay put up dry this year, but some producers are doing a great job even with the challenging weather. Although there still has not been a lot of new crop hay sold asking prices are mostly steady, supply is moderate, and demand is light to moderate. The Missouri Department of Agriculture has a hay directory at <https://apps.mda.mo.gov/haydirectory> or visit the University of Missouri Extension feed stuff finder at <https://feedstufffinder.org>
Alfalfa - Supreme 250.00-300.00, small square 10.00-17.00 per bale
Alfalfa - Premium 175.00-225.00
Alfalfa - Good 150.00-175.00, small square 6.00-10.00 per bale
Alfalfa - Fair 125.00-150.00
Mixed grass - Good/Premium 125.00-200.00
Mixed grass-Fair/Good 80.00-125.00, small square 3.50-8.00 per bale
Mixed grass - Fair 25.00-50.00 per large round bale
Wheat straw - 4.00-7.00 per small square bale

Please Note: The above volumes (tonnage, acres, and bales) listed are for confirmed trades only, it does not include estimated volume (tonnage) for bids or offers to the trade. List your hay for sale at: [Hay Listing Online Form](#). Explanation of Hay Quality Guidelines: [Hay Quality Designation Guidelines](#). Glossary of Terms: [Livestock, Poultry, & Grain Hay Terms](#)

MISSOURI WEEKLY SHEEP/GOAT AUCTION SUMMARY 6/6/25

Receipts: 1,476 Week Ago: 2,819 Last Year: 6,412

Feeder lambs Medium and Large 1-2 35-45 lbs. 182.50-197.50. Small and Medium 1-2 hair 25-50 lbs 180.00-240.00, fancy 285.00-290.00.
Slaughter lambs Choice and Prime 1-3 w/s 55-95 lbs 200.00-232.50. Choice and Prime 1-3 hair 50-100 lbs 220.00-280.00. Choice 1-3 hair 50-85 lbs 202.50-240.00.
Slaughter ewes Good 2-3 pkg 188 lbs 130.00. Good 2-3 hair 80-145 lbs 120.00-147.50. Utility and Good 1-3 100-115 lbs 105.00.
Slaughter bucks 1-2 185-190 ls 105.00-132.50. Hair bucks 1-2 155-190 lbs 125.00-150.00.
Replacement ewes Medium and Large 1-2 1-2 yrs 155 lbs exp 125.00. Small and Medium 1-2 1-2 yrs 70-90 lbs exp 155.00-190.00; 2-4 yrs 100-115 lbs exp 150.00-162.50.
Families Small and Medium 1-2 2-4 yrs 100-110 lbs exp with <20 lb lambs 180.00-310.00/fam; 4-6 yrs 100-110 lbs exp with <20 lb lambs 160.00-180.00/fam.
GOATS: Feeder kids Selection 1 30-50 lbs 330.00-375.00, replacements 400.00. Selection 2 20-50 lbs 240.00-322.50. Selection 3 pkg 23 pygmies 120.00; 40-50 lbs 200.00-225.00; pkg 40 lbs pygmies 205.00.
Slaughter kids Selection 1 50-65 lbs 340.00-407.50, fancy 400.00-435.00; 70-85 lbs 380.00-430.00. Selection 2 50-65 lbs 255.00-307.50; pkg 70 lbs 322.50.
Slaughter nannies Selection 1-2 50-60 lbs pygmies 105.00-137.50; 60-70 lbs 135.00-140.00; 70-80 lbs 105.00-160.00; 80-90 lbs 180.00-190.00, thin 90.00; 90-100 lbs 150.00-160.00; 100-165 lbs 110.00-175.00.
Slaughter bucks 150-165 lbs 195.00-290.00.
Wethers Selection 1-2 pkg 53 lbs 340.00. Wether kids Selection 1 pkg 67 lbs 430.00.
Replacement nannies Selection 1-2 1-2 yrs 60-105 lbs exp 200.00-262.50; 2-4 yrs 66 lbs exp 227.50.
Families Selection 1-2 2-4 yrs 50 lbs exp with <20 lb kids 110.00/fam; 2-4 yrs 75 lbs exp with <20 lb kids 230.00/fam.

Explanatory Notes: Stage - Represents estimated lambing/kidding period (Open, Exp=exposed, Bred, Fall = Sep-Nov, Win = Dec-Feb, Spr = Mar-May, Sum=Jun-Aug; w/s = woolled and shorn; /hd= per head; /fam=per family
All price CWT unless otherwise noted.

MISSOURI DROUGHT MONITOR

Date	None	D0	D1	D2	D3	D4
6/3/25	71.68	20.90	7.42	0	0	0
5/27/25	77.78	19.21	3.01	0	0	0
6/4/24	89.06	10.93	0.01	0	0	0

Reflects percentage of Missouri impacted by drought. D0 Abnormally Dry; D1 Moderate Drought; D2 Severe Drought; D3 Extreme Drought; D4 Exceptional Drought

NATIONAL DIRECT DELIVERED FEEDER PIG REPORT

6/6/25 Receipts: 120,289 Week ago: 142,674 Year Ago: 134,700
Early weaned pigs mostly 1.00 to 2.00 higher and feeder pigs steady to firm.
Cash 61,060 head 40.00-61.00, weighted average 52.65
Formula 49,629 head 41.85-60.24, weighted average 49.33
Feeder pigs 40 pounds basis: Cash 9,600 head 79.00-81.00, weighted average 80.21

NATIONAL DAILY DIRECT PRIOR DAY HOG REPORTS 6/6/25

BARROWS AND GILTS (Carcass Basis): 6,736 head
Base Carcass Price 95.00-105.00, weighted average 102.07

SOWS (Live Basis): 7,965 head
300-500 lbs. 25.00-77.00
Over 500 lbs. 56.00-78.97

MISSOURI WEEKLY DIRECT SLAUGHTER CATTLE REPORT 6/6/25

Weekly Receipts: 320 Week ago: 200 Year ago: 320
Trading as of Friday morning, flat dressed prices 10.00-15.00 higher and grid dressed sales 11.00 higher.

LIVE STEERS & HEIFERS: No sales reported
DRESSED STEERS & HEIFERS: 5 loads Thu flat 380.00

GRADE AND EIGHT (Grid): 3 loads Friday morning 384.00.

Click here for the current [National Crop Progress](#)
Click here for the current [Missouri Crop Progress](#)
The current hay directory can be found at: [Hay Directory](#).