

Weekly Market Summary

Published by:
Missouri Department of Agriculture
Ag Business Development Division
Market News Program



Chris Chinn, Director
Jill Wood, Division Director
Tony Hancock, Editor
<http://www.ams.usda.gov/marketnews.htm>
<http://www.ams.usda.gov/marketnews.htm>

Michael Kehoe, Governor

Volume XLV, Number 24 ♦ P.O. Box 630, Jefferson City, MO 65102 ♦ (573) 751-4211 ♦ Mon, June 16, 2025

MISSOURI WEEKLY FEEDER CATTLE WEIGHTED AVERAGE REPORT

Feeder Cattle Receipts: 26,323 Week ago: 39,834 Year ago: 24,847
Steers and Heifers Medium and Large 1—Weighted average weights and prices

STEERS: Medium and Large 1

326 lbs. 498.68	527 lbs. 411.45	725 lbs. 338.50	923 lbs. 297.70
375 lbs. 468.08	572 lbs. 396.44	770 lbs. 325.31	981 lbs. 277.59
426 lbs. 449.71	620 lbs. 371.47	829 lbs. 311.45	
470 lbs. 428.53	667 lbs. 352.13	867 lbs. 308.27	

HEIFERS: Medium and Large 1

334 lbs. 420.28	524 lbs. 363.05	715 lbs. 320.74	1072 lbs. 226.50
374 lbs. 429.55	576 lbs. 341.77	783 lbs. 302.19	
425 lbs. 409.06	628 lbs. 331.64	830 lbs. 287.58	
478 lbs. 384.37	680 lbs. 321.68	860 lbs. 270.44	

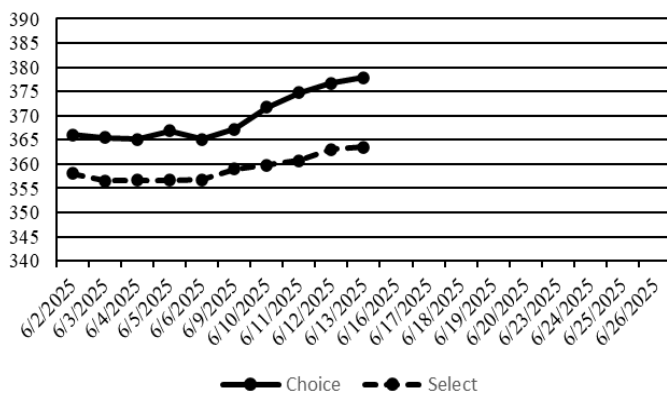
MISSOURI STEER (HEIFER) STOCKER FORMULA 6/16/2025

Monday's Missouri Stocker formula consists of 5,777 (5,389) head with a weighted average weight of 545.67 (536.81) lbs. and a price value of 392.86 (351.56), 8.40 higher (2.76 higher) than a week ago. This a rolling seven day calculated weighted value which combines all Feeder Steers reported by MDA/USDA Market News Service weighing from 400-649 lbs. in the Medium and Large 1 and Medium and Large 1-2 frame and muscle classifications, including all comment cattle except Brahman X. Heifer values are in parentheses.

NATIONAL BOXED BEEF CUTOUT VALUES

DATE	CHOICE	SELECT	TOTAL LOADS
6/9	367.25	358.93	90
6/10	371.76	359.84	106
6/11	374.76	360.75	108
6/12	376.72	363.07	91
6/13	377.88	363.50	80
5 Day Simple Average	373.67	361.22	

Boxed Beef Cuts June 2025

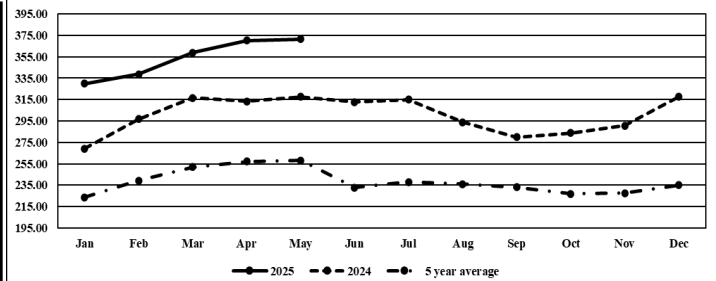


*Axis value ranges may be updated to reflect data points.

WEEKLY LIVESTOCK SLAUGHTER 6/14/25

	CATTLE	HOGS	SHEEP
Week to Date:	556,000	2,367,000	37,000
Last Week:	580,000	2,339,000	38,000
Last Year:	608,178	2,333,209	41,810

Missouri Stocker Formula - Steers



*Graph is updated the first Monday of each month. Axis value ranges may be updated to reflect data points.

MISSOURI WEEKLY CATTLE AUCTION SUMMARY

Total Receipts: 29,702 Week Ago: 47,369 Year Ago: 29,412

Compared to last week, feeder steers sold 5.00-10.00 higher, heifers sold steady to 5.00 higher. A moderate to light supply this week, which is fairly typical as summer heat starts to arrive and many sales in the north go to every other week schedules. Demand was good best for load lots of yearlings as they become harder to find for the next few months. Pastures are mostly in good to excellent condition and continue to be some of the best rated of all of the major cattle states currently. Late week futures resulted in losses for the week in both live and feeder cattle contracts and fed cattle trade seemed to at least take a breath after several weeks of consecutive higher money. That being said the CME Feeder Cattle Index sets at a record high and the Missouri Stocker Formula is with in a couple dollars of its record. A few stick out sales this week included 27 head of 418 lb. steers at Joplin Regional Stockyards at 480.00, 80 head of 506 lb. thin fleshed steers for 467.50 and 47 head 572 lb. steers for 432.00. Callaway Livestock Center sold 46 head of 620 lb. steers for 385.00, and a load of 752 lb. steers for 345.00. South Central Regional Stockyards sold 32 head of 703 lb. steers for 359.25. Lolli Brothers Livestock Market sold a load of 876 lb. steers at 321.85. Unionville Livestock Market sold a load of light 9 wt. steers for 307.25. Ozarks Regional Stockyards sold two loads of 982 lb. steers for 278.75. On the heifer side Joplin Regional Stockyards sold a load of 538 lb. fancy heifers for 415.00. Lolli Brothers Livestock Market sold 3 loads of heifers 710-712 lbs. all for 323.00. Boxed beef cutout values were sharply higher for the week, choice closed at 377.88, up 12.80 and Select closed at 363.50, up 6.77 compared to last Friday. Negotiated feedlot sales as of the 2:00 cutoff time for Friday afternoons report totaled just under 49K for the week. Live prices in the south mostly 235.00, in the north 240.00-242.00, and dressed sales were mostly at 380.00. The Missouri Stocker formula consists of 5777 head with a weighted average weight of 545.67 lbs. and a price value of 392.86, 8.40 higher than last week. The steer/heifer spread is 41.30 per cwt.

SOUTHWEST MISSOURI WEEKLY SUMMARY

(Joplin and Springfield)

Receipts: 9,317 Week ago: 16,330 Year Ago: 11,094
Compared to last week, steers and heifers steady to 10.00 higher, spots 15.00 to 25.00 higher early week. Slaughter cows 2.00 lower to 2.00 higher. Slaughter bulls 2.00 lower to 4.00 higher.

FEEDER STEERS: Medium and Large 1

300-400 lbs.	450.00-510.00
400-500 lbs.	400.00-460.00
500-600 lbs.	370.00-432.00
600-700 lbs.	337.00-380.00
700-800 lbs.	309.00-350.00
800-900 lbs.	296.50-316.00
900-1000 lbs.	284.00-291.00

FEEDER HEIFERS: Medium and Large 1

300-400 lbs.	425.00-470.00
400-500 lbs.	375.00-420.00
500-600 lbs.	325.00-370.00
600-700 lbs.	307.00-355.00
700-800 lbs.	293.00-326.00
800-900 lbs.	267.00-293.00
Pkg 924 lbs.	265.00

FEEDER HOLSTEIN STEERS Large 3

400-500 lbs.	290.00-312.50
500-600 lbs.	275.00
Pkg 813 lbs.	230.00

SLAUGHTER COWS: Breaking and Boning (70-85% lean) 140.00-162.00; high dressing 155.00-171.00; low dressing 125.00-150.00. Lean (85-90%) 125.00-147.50.

SLAUGHTER BULLS: Yield Grade 1-2 1265-2415 lbs. 177.50-203.00; high dressing 200.00-229.00; low dressing 164.00-174.00

BRED COWS: Medium and Large 1 2-4 yrs 1050 lbs 2nd/3rd stage 3100.00; 2-8 yrs 1075-1620 lbs 2nd/3rd stage 2650.00-3050.00, 1st stage 2400.00-2650.00; >5 yrs 1175-1460 lbs 2nd/3rd stage 2600.00-2650.00. Medium and Large 1-2 2-8 yrs 980-1470 lbs 2nd/3rd stage 1950.00-2700.00, 1st stage 1800.00-2200.00; >8 yrs 1085-1387 lbs 2nd/3rd stage 2200.00-2500.00 per head

COW & CALF PAIRS: Medium and Large 1-2 >8 yrs 1250-1505 lbs with 150-300 lb calves 2600.00-2700.00. Medium and Large 2 >8 yrs 960 lbs with 150-300 lb calves 2850.00 per pair

SOUTH CENTRAL MISSOURI WEEKLY SUMMARY

(West Plains, Phillipsburg)

Receipts: 4,211 Week ago: 4,813 Year Ago: 4,099
Compared to last week, early week steers and heifers 3.00 to 14.00 higher, spots 18.00 higher on steer calves. Late week feeders 4.00 to 8.00 lower. Slaughter cows early week 2.00 to 6.00 higher, late week 2.00 to 4.00 lower. Slaughter bulls 3.00 to 8.00 higher.

FEEDER STEERS: Medium and Large 1

300-400 lbs.	400.00-515.00
400-500 lbs.	400.00-465.00
500-600 lbs.	373.00-425.00
600-700 lbs.	347.00-391.00
700-800 lbs.	308.50-341.00
800-900 lbs.	303.00-323.00
950-1000 lbs.	276.00-278.75

FEEDER HEIFERS: Medium and Large 1

300-400 lbs.	380.00-450.00
400-500 lbs.	356.00-415.00
500-600 lbs.	315.00-370.00
600-700 lbs.	304.00-338.00
700-800 lbs.	317.00
30 hd 825 lbs.	287.50

FEEDER HOLSTEIN STEERS: Large 3

17 hd 489 lbs.	307.00
----------------	--------

SLAUGHTER COWS: Breaking and Boning (70-85% lean) 142.50-163.00, high dressing 155.00-174.00; low dressing 128.00-150.00. Lean (85-90%) 125.00-149.00

SLAUGHTER BULLS: Yield Grade 1-2 1255-2315 lbs. 180.00-196.00; high dressing 194.50-222.00; low dressing 163.00-178.00.

BRED COWS: Medium and Large 1-2 2-8 yrs 1130-1410 lbs 2nd/3rd stage 2200.00-3250.00, 1st stage 2425.00-2650.00 per head

COW & CALF PAIRS: Medium and Large 1-2 2-8 yrs 1250-1325 lbs with 150-300 lb calves 3300.00-3350.00; 2-8 yrs 1210-1320 lbs rebred 1st stage with 150-300 lb calves 3000.00-3800.00 per pair

WEST CENTRAL MISSOURI WEEKLY SUMMARY

(Kingsville, Windsor, Butler)

Receipts: 4,203 Week ago: 6,734 Year ago: 3,783
Compared to last week, steers and heifers 4.00 to 15.00 higher. Slaughter cows 2.00 to 4.00 higher.

FEEDER STEERS: Medium and Large 1

300-400 lbs.	443.00-515.00
400-500 lbs.	414.00-472.50
500-600 lbs.	380.00-443.00
600-700 lbs.	352.00-394.00
700-800 lbs.	318.00-348.00
Pkg 818 lbs.	301.00

FEEDER HEIFERS: Medium and Large 1

300-400 lbs.	400.00-460.00
400-500 lbs.	384.00-439.00
500-600 lbs.	338.00-404.00
600-700 lbs.	310.00-346.00
700-800 lbs.	301.00-319.75
Pkg 844 lbs.	276.00

SLAUGHTER BULLS: Yield Grade 1-2 1300-2145 lbs. 185.00-206.00; high dressing 210.00-229.00; low dressing 120.00-164.00.

SLAUGHTER COWS: Breaking and Boning (70-85% lean) 148.00-163.00, high dressing 161.00-178.00. Lean (85-90%) 123.00-155.00

BRED COWS: Medium and Large 1-2 2-8 yrs 900-1635 lbs 2nd/3rd stage 1575.00-2825.00 per head

COW & CALF PAIRS: scarce

NORTHEAST MISSOURI WEEKLY SUMMARY

(Bowling Green, Kingdom City, Palmyra)

Receipts: 5,414 Week ago: 6,577 Year ago: 3,925
Compared to last week, steers under 700 lbs steady to firm, spots 5.00 to 10.00 higher on 450-500 and 550-600 lbs, pots of 750-900 lbs 10.00-12.00 higher. Heifers 400-500 lbs steady to 5.00 lower, 500-600 lbs mostly 5.00 to 10.00 lower, 600-700 lbs firm to 5.00 higher, 700 lbs 14.00 higher. Slaughter cows steady to firm.

FEEDER STEERS: Medium and Large 1

300-400 lbs.	472.50-570.00
400-500 lbs.	429.00-497.50
500-600 lbs.	372.50-435.00
600-700 lbs.	330.00-385.00
700-800 lbs.	317.00-345.00
800-900 lbs.	306.10-330.50

FEEDER HEIFERS: Medium and Large 1

350-400 lbs.	423.00-465.00
400-500 lbs.	367.50-452.50
500-600 lbs.	331.00-376.00
600-700 lbs.	305.50-339.50
700-800 lbs.	298.00-304.25
12 hd 834 lbs.	289.50

SLAUGHTER BULLS: Yield Grade 1-2 1450-2440 lbs. 196.50-211.00; high dressing 205.00-221.00; low dressing 163.50-188.00.

SLAUGHTER COWS: Breaking and Boning, (70-85% lean) 148.00-160.00; high dressing 159.00-173.00. Lean (85-90%) 135.00-151.00.

SLAUGHTER STEERS: Choice 2-3 232.00-240.50. Select and Choice 1-3 225.00-230.50.

SLAUGHTER HEIFERS: Choice 2-3 231.00-238.00. Select 1-2 229.00.

BRED COWS: Scarce

COW CALF PAIRS: Scarce

NORTH CENTRAL MISSOURI WEEKLY SUMMARY

(Macon, Unionville, Green City, New Cambria)

Receipts: 2,076 Week ago: 5,236 Year ago: 2,860
Compared to last week, steers and heifers steady to 10.00 higher, spots 15.00 higher. Slaughter cows mostly steady.

*Some sale barns on a bi-weekly schedule and may not have a sale each week.

FEEDER STEERS: Medium and Large 1

400-500 lbs.	429.50-490.00
500-600 lbs.	388.00-442.00
600-700 lbs.	350.00-395.00
700-800 lbs.	320.00-340.00
850-900 lbs.	309.50-321.85
900-950 lbs.	306.25-307.25

FEEDER HEIFERS: Medium and Large 1

400-500 lbs.	379.00-416.00
500-600 lbs.	346.50-387.50
600-700 lbs.	326.50-340.25
700-800 lbs.	312.75-336.10

SLAUGHTER BULLS: Yield Grade 1-2 1335-2370 lbs. 180.00-200.00; high dressing 201.00-219.00

SLAUGHTER COWS: Breaking and Boning (70-85% lean) 140.00-158.00, high dressing 160.00-165.00. Lean (85-90%) 125.00-147.00

BRED COWS: Medium and Large 1-2 2-8 yrs 1320-1365 lbs 2nd stage 3300.00-3500.00; >5 yrs 1485 lbs 3rd stage 2500.00 per head

COW/CALF PAIRS: Medium and Large 1-2 5-8 yrs 1200-1500 lbs with <150 to 300 lb calves 3400.00-3550.00 per pair

SOUTHEAST MISSOURI WEEKLY SUMMARY

(Jackson and Farmington)

Receipts: 1,140 Week ago: 1,650 Year ago: 777
Compared to last week, steers 3.00 to 10.00 higher. Heifers uneven from 2.00 lower to 10.00 higher. Slaughter cows and bulls steady.

FEEDER STEERS:

Medium and Large 1

300-400 lbs. 442.00-560.00
400-500 lbs. 390.00-452.00
500-600 lbs. 352.00-410.00
600-700 lbs. 295.00-350.00
700-800 lbs. 287.00-330.00
800-850 lbs. 250.00-295.00

FEEDER HEIFERS:

Medium and Large 1

300-400 lbs. 392.00-440.00
400-500 lbs. 350.00-400.00
500-600 lbs. 300.00-372.00
600-700 lbs. 280.00-315.00
700-800 lbs. 251.00-285.00
800-900 lbs. 235.00-270.00

SLAUGHTER BULLS: Yield
Grade 1-2 1305-2455 lbs 158.00-
171.00; high dressing 180.00-
215.00.

SLAUGHTER COWS: Breaking
and Boning (75-85% lean) 128.00-
146.00; high dressing 146.00-
174.00. Lean (85-90% lean) 95.00-
152.00

BRED COWS: Medium and Large
2 2-8 yrs 1010-1820 lbs 2nd/3rd
stage 2200.00-3250.00, 1st stage
1800.00-2800.00; >8 yrs 1025-
1530 lbs 2nd/3rd stage 1500.00-
2525.00 per head

COW & CALF PAIRS: Medium
and Large 2 2-8 yrs 1000-1425 lbs
with <150 lb calves 2100.00-
3600.00; 2-4 yrs 1250 lbs rebred
1st stage with 150-300 lb calves
4050.00 per pair

EAST CENTRAL MISSOURI WEEKLY SUMMARY

(Cuba, Vienna)

Receipts: 2,587 Week Ago: 3,817 Year ago: 1,852
Compared to last week, steers and heifers steady to 15.00 higher.
Slaughter cows steady to 3.00 higher.

FEEDER STEERS:

Medium and Large 1

300-400 lbs. 462.00-535.00
400-500 lbs. 428.00-474.00
500-600 lbs. 372.50-414.00
600-700 lbs. 342.50-391.50
700-800 lbs. 310.00-359.25
Pkg 890 lbs. 286.00

FEEDER HEIFERS:

Medium and Large 1

300-400 lbs. 405.00-442.00
400-500 lbs. 365.00-440.00
500-600 lbs. 327.50-390.00
600-650 lbs. 310.00-338.25
Pkg 726 lbs. 303.00
10 hd 1072 lbs. 226.50

SLAUGHTER BULLS: Yield
Grade 1-2 1290-2225 lbs 174.50
-199.00; high dressing 219.00-
225.00; low dressing ind 180.00

SLAUGHTER COWS: Breaking
and Boning, (70-85% lean) 145.00-
163.00; high dressing 154.00-
175.00. Lean (85-90%) 125.00-
148.00

BRED COWS: Medium and
Large 1-2 2-8 yrs 1000-1485 lbs
1st to 3rd stage 2200.00-2800.00;
>8 yrs 1140-1363 lbs 2nd/3rd
stage 2150.00-2525.00 per head

COW & CALF PAIRS: Medium
and Large 1-2 >5 yrs 960-1325 lbs
with 150-300 lb calves 2725.00-
3500.00; 5-8 yrs 1080 lbs 2nd
stage 3700.00 per pair

NORTHWEST MISSOURI WEEKLY SUMMARY

(Tina)

Receipts: 754 Week Ago: 2,212 Year Ago: 1,022
Compared to last week, feeders higher undertone on a light supply.
Slaughter cows 2.00 to 5.00 higher.

FEEDER STEERS:

Medium and Large 1

400-450 lbs. 437.00-443.00
500-600 lbs. 417.50-432.50
600-700 lbs. 370.00-375.00

FEEDER HEIFERS:

Medium and Large 1

350-400 lbs. 413.00-425.00
Pkg 461 lbs. 391.00

SLAUGHTER BULLS:

Yield Grade 1-2 1410-2115 lbs
181.00-200.00; high dressing
201.00-216.50; low dressing
couple 142.50-186.00.

SLAUGHTER COWS: Breaking
and Boning, (70-85% lean) 146.00-
164.00; high dressing 157.00-
167.50. Lean (85-90%) 131.00-
138.00.

BRED COWS: Scarce

COW/CALF PAIRS: Scarce

AFTERNOON NATIONAL SLAUGHTER CATTLE REVIEW

So far for Friday, negotiated cash trade has been moderate on moderate demand in Nebraska with live purchases steady to 2.00 lower from 240.00-242.00, compared to last week. Dressed purchases have been steady at 380 compared to Thursday. Negotiated cash trade has been limited on moderate demand in all other feeding regions, although not enough for an adequate market test. The latest established market in the Texas Panhandle was Wednesday at 235.00. The latest market test in Kansas was Thursday with live purchases from 233.00-238.00, mostly 235.00. The latest established market in the Western Cornbelt was Thursday, with live purchases from 240.00-241.00 and dressed purchases at 380.00.

Negotiated Cash Sales:

Confirmed:	11,522	Week Ago:	15,551	Year Ago:	8,699
Week to date:	48,728	Week Ago:	66,243	Year Ago:	88,081

<u>Live Basis</u>	<u>Steers</u>	<u>Heifers</u>
Over 80% Choice	236.00-242.00, avg 241.06	238.00-242.00, avg 240.67
65-80% Choice	240.00-242.00, avg 240.65	235.00-242.00, avg 238.53
35-65% Choice	-	-
0-35% Choice	-	-
Total All Grades	236.00-242.00, avg 241.03	235.00-242.00, avg 239.97
<u>Dressed Basis</u>		
Over 80% Choice	380.00-383.00, avg 381.56	380.00-382.00, avg 380.14
65-80% Choice	-	-
35-65% Choice	-	-
0-35% Choice	-	-
Total All Grades	380.00-383.00, avg 381.56	380.00-382.00, avg 380.14

<u>All Beef Type Steers/Heifers</u>	<u>Head</u>	<u>Avg Wt</u>	<u>Price Range</u>	<u>Wtd Avg</u>
Live FOB	8,428	1450.0	233.00-242.00	240.59
Live Del	1,478	1515.9	236.00-242.00	241.15
Dressed Del	1,616	886.9	375.00-385.00	380.75
Dressed FOB	-	-	-	-

WEEKLY COMMODITY FUTURES TRENDS

Compared to last week, Live Cattle 1.20 to 6.42 lower, Lean Hogs 0.72 to 2.37 higher, Feeder Cattle 3.18 to 3.73 lower.

Daily Futures Closes

	Mon.	Tues.	Wed.	Thu.	Fri.
Cattle					
Jun	227.00	227.07	227.82	228.20	225.10
Aug	219.25	218.20	218.02	216.95	212.45
Oct	215.87	215.65	215.02	214.35	209.92
Dec	215.40	215.75	214.87	214.40	210.62
Feb	214.27	214.87	213.95	213.75	210.57
Lean Hogs					
Jun	102.77	103.15	103.37	103.65	103.70
Jul	107.20	108.20	108.85	108.90	109.47
Aug	110.10	109.80	110.20	110.17	110.12
Oct	93.30	93.10	93.75	93.92	94.20
Dec	84.57	84.55	85.10	85.35	85.32
Fdr Cattle					
Aug	311.65	313.15	311.07	311.25	306.42
Sep	310.70	312.75	310.80	310.55	305.60
Oct	308.37	310.55	308.85	308.45	303.35
Nov	305.70	307.82	306.37	305.92	300.77
Jan	299.77	301.85	300.52	300.15	295.42
Milk					
Jun	18.83	18.81	18.80	18.76	18.75
Jul	18.82	18.52	18.25	18.20	18.13
Aug	19.33	19.06	18.82	18.81	18.78

WEEKLY COMMODITY GRAIN FUTURES TRENDS

Compared to last week, Soybeans 0.12 to 0.19 higher, Wheat 0.09 to 0.11 lower, Corn Jul 0.02 higher, others 0.05 to 0.07 lower, KC Wheat 0.06 to 0.09 lower, Soybean Meal 3.80 to 6.60 lower.

Daily Grain Futures Closes

	Mon.	Tues.	Wed.	Thu.	Fri.
Soybeans					
Jul	1056	1057 3/4	1050 1/2	1042 1/4	1069 3/4
Aug	1047 3/4	1049 1/2	1045 1/2	1041	1069
Sep	1023	1023	1021 1/4	1020 1/4	1046 3/4
Nov	1030 3/4	1031 1/4	1029 1/4	1027 1/4	1054 3/4
Jan	1044 3/4	1044 1/4	1042 3/4	1041	1067 1/2
Wheat					
Jul	542	534 1/2	534 1/4	526 1/2	543 3/4
Sep	557	548 3/4	549	541 3/4	559 1/4
Dec	579 1/4	570 1/4	570 1/2	563 1/2	580 1/2
Mar	599	589 1/2	590	582 3/4	599 1/4
May	610	600 1/4	601 1/4	594	609 3/4
Corn					
Jul	433 1/2	438 3/4	437	438 1/2	444 1/2
Sep	422 1/4	425 1/2	425 1/4	426 1/4	428 1/2
Dec	438	440	439 3/4	440 1/4	443
Mar	453 3/4	455 1/2	455 1/4	455 3/4	457 3/4
May	463 3/4	465 1/4	465	465 1/4	467
KC Wheat					
Jul	537 1/2	527 1/4	526 1/4	522 3/4	540 3/4
Sep	500 1/4	540	540 1/4	537 1/2	555
Dec	571 1/4	561 1/4	561 3/4	559 1/4	576 3/4
Mar	590 3/4	580 3/4	581 1/2	579 1/2	596
May	601 3/4	591 1/2	592 1/4	590 1/2	606 3/4
SB Meal					
Jul	295.50	295.90	294.20	294.50	291.90
Aug	299.20	299.40	297.80	298.30	295.40
Sep	301.90	301.90	300.30	300.70	297.70
Oct	303.60	303.00	301.50	301.80	298.90
Dec	308.20	307.20	305.90	306.10	303.20

MISSOURI GRAIN WEEKLY TRENDS

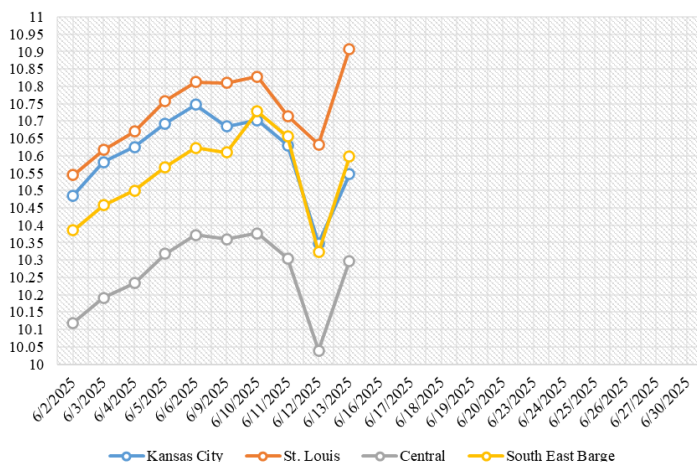
Compared to last week, Soybeans 0.22 lower to 0.10 higher, Wheat 0.11 lower, Corn 0.03 to 0.04 higher, Sorghum no trend due to lack of bids.

Area	#1 Soybeans	#2 Soft Wheat	#2 Corn	#2 Grain Sorghum
Kansas City				
Friday**	10.62-10.87	5.50	4.51	3.53
Monday	10.61-10.76	5.37	4.44	3.44
Tuesday	10.63-10.78	5.30	4.49	3.49
Wednesday	10.56-10.71	5.29	4.47	3.47
Thursday	10.32-10.37	5.22	4.49	3.49
Friday	10.45-10.65	5.39	4.55	3.55
St. Louis				
Friday**	10.81	5.60-5.62	4.65	—
Monday	10.81	5.47-5.49	4.57	—
Tuesday	10.83	5.40-5.42	4.62	—
Wednesday	10.72	5.39-5.41	4.60	—
Thursday	10.63	5.32-5.34	4.62	—
Friday	10.91	5.49-5.51	4.68	—
Central				
Friday**	10.27-10.42	5.05-5.35	4.18-4.23	—
Monday	10.26-10.41	4.92-5.22	4.09-4.14	—
Tuesday	10.28-10.43	4.85-5.15	4.14-4.19	—
Wednesday	10.21-10.36	4.84-5.14	4.12-4.17	—
Thursday	10.02-10.07	4.77-5.07	4.14-4.19	—
Friday	10.25-10.35	4.94-5.24	4.20-4.25	—
S.E. MO				
Friday**	10.52-10.72	—	4.51-4.58	—
Monday	10.51-10.71	—	4.42-4.51	—
Tuesday	10.73	—	4.56	—
Wednesday	10.66	—	4.54	—
Thursday	10.07-10.57	—	4.56	—
Friday	10.35-10.85	—	4.62	—

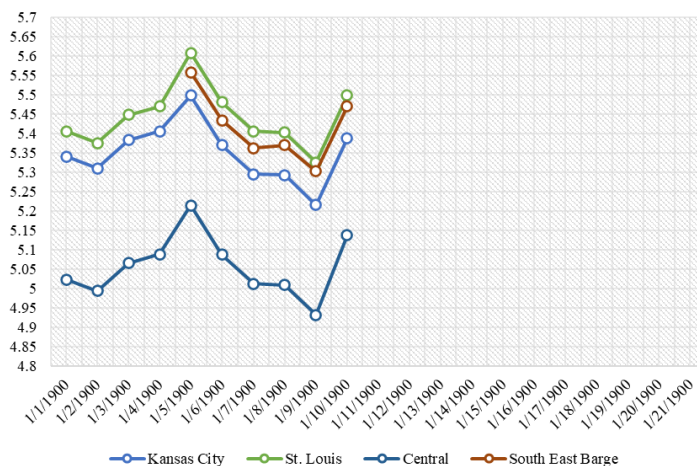
(PRICES PER BUSHEL) *NEW CROP **PREVIOUS WEEK'S PRICES
*Bids calculated using Kansas City, St. Louis, and St. Joseph bids

MONTHLY GRAIN CROP

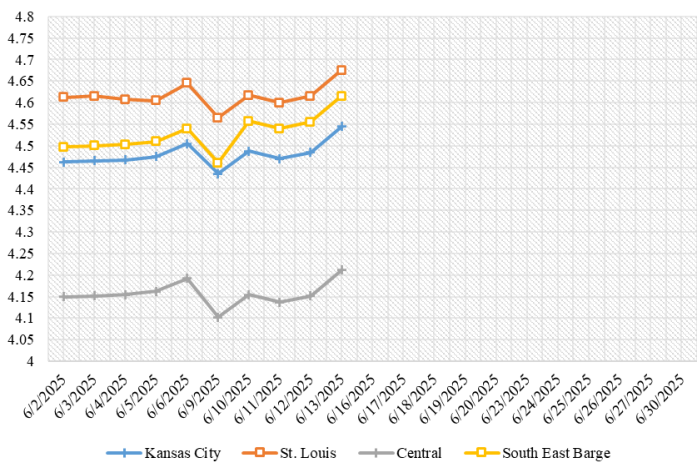
June 2025 Soybean Bids



June 2025 Wheat Bids



June 2025 Corn Bids



*Axis value ranges may be updated to reflect data points.
Only dates in which markets are trading and only current cash bids are represented.

WHOLESALE FEEDSTUFFS PRICES (DOLLARS PER TON-BULK BASIS)

Area	Cottonseed Meal 41%	Soybean Meal 46.5-48%	Corn Gluten Pellets 21%	Wheat Middlings
Kansas City	297.50	271.50	196.00	91.67
St. Louis	292.50	n/a	191.00	85.00

MISSOURI CROP PROGRESS 6/9/25

There were 2.7 days suitable for fieldwork in the week ending June 8, 2025. Topsoil moisture supply was rated 1 percent very short, 5 percent short, 68 percent adequate, and 26 percent surplus. Subsoil moisture supply was rated 1 percent very short, 9 percent short, 75 percent adequate, and 15 percent surplus. Corn planted reached 98 percent, compared to the 5-year average of 97 percent. Corn emerged reached 93 percent, compared to the 5-year average of 91 percent. Corn condition was rated 1 percent very poor, 5 percent poor, 19 percent fair, 68 percent good, and 7 percent excellent. Soybeans planted reached 83 percent, compared to the 5-year average of 74 percent. Soybeans emerged reached 69 percent, compared to the 5-year average of 59 percent. Soybean condition was rated 4 percent poor, 21 percent fair, 71 percent good, and 4 percent excellent. Winter wheat headed reached 99 percent, compared to the 5-year average of 98 percent. Winter wheat harvested reached 2 percent, compared to the 5-year average of 5 percent. Winter wheat condition was rated 5 percent poor, 23 percent fair, 60 percent good, and 12 percent excellent.

	Week Ending			5 yr average
	6/8/24	6/1/25	6/8/25	
Corn Emerged	89	86	93	91
Soybeans Planted	77	79	83	74
Soybeans Emerged	65	60	69	59
Winter Wheat Headed	100	98	99	98
Winter Wheat Harvested	9	1	2	5
Alfalfa hay 1st cutting	70	55	60	63
Other hay cut	43	29	34	37

WASDE 6/12/25

Oilseeds: U.S. 2025/26 soybean supply, use, and price projections are unchanged this month. The U.S. season-average soybean price is forecast at \$10.25 per bushel; soybean meal and oil prices are projected at \$310 per short ton and 46 cents per pound, respectively. **Wheat:** The outlook for 2025/26 U.S. wheat this month is for slightly larger supplies, unchanged domestic use, higher exports, and lower ending stocks. Supplies are raised on minimally higher output as all wheat production is projected at 1,921 million bushels, up 115,000 bushels from last month as higher Soft Red Winter and White Winter production offset lower Hard Red Winter (HRW) production. The all wheat yield is virtually unchanged at 51.6 bushels per acre. Exports are raised 25 million bushels to 825 million on strong early 2025/26 sales, especially for HRW. Projected 2025/26 ending stocks are lowered 25 million bushels to 898 million but are still 7 percent above last year. The projected 2025/26 season-average farm price is \$0.10 per bushel higher at \$5.40 on the reduced stocks. **Coarse Grains:** The 2025/26 U.S. corn outlook is little changed from last month, with lower beginning and ending stocks. Corn area and yield forecasts are unchanged. USDA will release its Acreage report on June 30, which will provide survey-based indications of planted and harvested area. Beginning stocks down 50 million bushels reflecting a forecast increase in exports for 2024/25. Exports are raised 50 million bushels, based on reported U.S. Census Bureau shipments through the month of April, inspection data during the month of May, and current outstanding sales. With no use changes for 2025/26, ending stocks are lowered 50 million bushels to 1.8 billion. The season-average farm price received by producers is unchanged at \$4.20 per bushel.

MISSOURI WEEKLY HAY SUMMARY 6/12/25

Special Note: Beginning 6/19/25, this report will be published biweekly. Any questions or concerns can be emailed to mymarketnews@usda.gov.

Producers are getting some hay baled as small windows of weather allow. Thus far there has not been any extended periods of days in which farmers can just go without having to look at weather and calculate if the risk of getting hay wet is worth it or not. Starting to see some new crop hay come to market. Demand is light as pastures in the state are some of the best in the nation with 88% rated good to excellent. Hay prices are steady to weak. The supply of hay is moderate, and demand is light to moderate. The Missouri Department of Agriculture has a hay directory at <https://apps.mda.mo.gov/haydirectory> or visit the University of Missouri Extension feed stuff finder at <https://feedstufffinder.org>
Alfalfa - Supreme 250.00-300.00, small square 10.00-15.00 per bale
Alfalfa - Premium 175.00-225.00
Alfalfa - Good 150.00-175.00, small square 6.00-10.00 per bale
Alfalfa - Fair 125.00-150.00
Mixed Grass—Premium 150.00-200.00
Mixed grass - Good/Premium 100.00-150.00
Mixed grass-Fair/Good 75.00-125.00, small square 3.00-7.00 per bale
Mixed grass - Fair 25.00-50.00 per large round bale
Wheat straw - 4.00-7.00 per small square bale

Please Note: The above volumes (tonnage, acres, and bales) listed are for confirmed trades only, it does not include estimated volume (tonnage) for bids or offers to the trade. List your hay for sale at: [Hay Listing Online Form](#). Explanation of Hay Quality Guidelines: [Hay Quality Designation Guidelines](#). Glossary of Terms: [Livestock, Poultry, & Grain Hay Terms](#)

MISSOURI WEEKLY SHEEP/GOAT AUCTION SUMMARY 6/16/25

Receipts: 2,944 Week Ago: 1,476 Last Year: 705

SHEEP: Feeder lambs Medium and Large 1-2 pkg 48 lbs 200.00. Small and Medium 1-2 hair 25-50 lbs 220.00-300.00, thin 160.00. Small and Medium 2 hair 35-55 lbs 220.00-260.00. Small and Medium 2-3 hair pkg 25 lbs 230.00.

Slaughter lambs Choice and Prime 1-3 w/s 55-115 lbs 200.00-245.00. Choice and Prime 1-3 hair 50-95 lbs 205.00-257.50. Choice 1-2 hair 55-80 lbs 200.00-212.00; pkg 97 lbs 185.00. Choice 1-3 hair 50-60 lbs 220.00-225.00; 65-80 lbs 185.00-210.00.

Slaughter ewes Good 2-3 133 lbs 125.00. Utility and Good 1-2 75-140 lbs 111.00-125.00. Utility and Good 1-3 130-185 lbs 80.00-85.00. Utility 1-2 120-220 lbs 92.50-105.00. Good 2-3 hair pkg 148 lbs 120.00. Good 2-3 hair 75-95 lbs 125.00-135.00/hd. Utility and Good 1-3 hair 90-135 lbs 110.00-120.00/hd. Bucks 1-2 hair 150-190 lbs 110.00-125.00.

Replacement ewes Medium 1-2 hair 1-2 yrs 65-100 lbs exp 210.00-232.50; 4-6 yrs 100-115 lbs exp 140.00. Small and Medium 1-2 hair 35 hd <1 yrs 63 lbs 255.00. Small and Medium 1-2 hair <1 yrs 77 lbs exp 145.00/hd; 60 lbs open 160.00/hd; 1-2 yrs 70 lbs exp 140.00/hd; 2-4 yrs 105-120 lbs exp 150.00-200.00/hd.

GOATS: Feeder kids Selection 1 30-50 lbs 325.00-380.00, fancy 398.00-405.00. Selection 1-2 pkg 25 lbs 305.00. Selection 2 30-50 lbs 200.00-305.00. Selection 3 14 hd 32 lbs 200.00.

Slaughter kids Selection 1 50-80 lbs 325.00-405.00. Selection 1-2 40-70 lbs 270.00-310.00. Selection 2 50-60 lbs 250.00-320.00. Selection 3 pkg 54 lbs 225.00.

Slaughter nannies Selection 1-2 60-150 lbs 100.00-175.00., pygmies 150.00. Selection 1-2 60-70 lbs 75.00-105.00; 70-90 lbs 105.00-125.00.

Slaughter bucks Selection 1-2 60-70 lbs pygmies 200.00-220.00; 100-120 lbs 175.00-230.00; 165-180 lbs 215.00-247.50.

Wethers Selection 1-2 70-90 lbs 240.00-275.00. Wether kids Selection 1 pkg 63 lbs 390.00.

Replacement nannies/does Selection 1-2 <1 yrs 40-55 lbs open 200.00-250.00/hd; 1-2 yrs 51 lb exp 150.00/hd.

Families Selection 1-2 4-6 yrs 65-85 lbs with <20 lb kids 140.00-240.00/fam; >6 yrs 75-85 lbs exp wht <20 lb kids 130.00-150.00/fam.

Explanatory Notes: Stage - Represents estimated lambing/kidding period (Open, Exp=exposed, Bred, Fall = Sep-Nov, Win = Dec-Feb, Spr = Mar-May, Sum=Jun-Aug; w/s = woolled and shorn; /hd= per head; /fam=per family
All price CWT unless otherwise noted.

MISSOURI DROUGHT MONITOR

Date	None	D0	D1	D2	D3	D4
6/10/25	81.58	14.46	3.96	0	0	0
6/3/25	71.68	20.90	7.42	0	0	0
6/11/24	88.89	11.11	0	0	0	0

Reflects percentage of Missouri impacted by drought. D0 Abnormally Dry; D1 Moderate Drought; D2 Severe Drought; D3 Extreme Drought; D4 Exceptional Drought

NATIONAL DIRECT DELIVERED FEEDER PIG REPORT

6/13/25 Receipts: 165,335 Week ago: 120,289 Year Ago: 124,638
Early weaned pigs firm to 2.00 higher and feeder pigs mostly 3.00 higher.
Cash 116,519 head 40.00-63.00, weighted average 53.68
Formula 30,570 head 43.93-62.82, weighted average
Feeder pigs 40 pounds basis: Cash 18,246 head 80.00-88.00, weighted average 83.94

NATIONAL DAILY DIRECT PRIOR DAY HOG REPORTS 6/16/25

BARROWS AND GILTS (Carcass Basis): 2,570 head
Base Carcass Price 100.00-110.00, weighted average 105.12

SOWS (Live Basis): 8,282 head
300-500 lbs. 25.00-78.00
Over 500 lbs. 52.00-78.84

MISSOURI WEEKLY DIRECT SLAUGHTER CATTLE REPORT 6/13/25

Weekly Receipts: 400 Week ago: 320 Year ago: 360
Trading as of Friday morning, flat dressed prices inactive and grid dressed sales 1.00 higher.

LIVE STEERS & HEIFERS: No sales reported
DRESSED STEERS & HEIFERS: No sales reported

GRADE AND EIGHT (Grid): 8 loads Thu 385.00

Click here for the current [National Crop Progress](#)
Click here for the current [Missouri Crop Progress](#)
The current hay directory can be found at: [Hay Directory](#).