

Weekly Market Summary

Published by:
Missouri Department of Agriculture
Ag Business Development Division
Market News Program



Chris Chinn, Director
Jill Wood, Division Director
Tony Hancock, Editor
<http://www.ams.usda.gov/marketnews.htm>
<http://www.ams.usda.gov/marketnews.htm>

Michael Kehoe, Governor

Volume XLV, Number 25 ♦ P.O. Box 630, Jefferson City, MO 65102 ♦ (573) 751-4211 ♦ Mon, June 23, 2025

MISSOURI WEEKLY FEEDER CATTLE WEIGHTED AVERAGE REPORT

Feeder Cattle Receipts: 28,428 Week ago: 26,323 Year ago: 24,137
Steers and Heifers Medium and Large 1—Weighted average weights and prices

STEERS: Medium and Large 1

271 lbs. 525.88	474 lbs. 423.77	670 lbs. 351.87	883 lbs. 308.16
328 lbs. 476.58	528 lbs. 396.81	721 lbs. 335.71	927 lbs. 294.82
375 lbs. 461.19	569 lbs. 390.59	768 lbs. 318.41	971 lbs. 283.29
423 lbs. 437.06	622 lbs. 363.20	828 lbs. 308.47	

HEIFERS: Medium and Large 1

332 lbs. 421.71	525 lbs. 362.94	718 lbs. 315.75
377 lbs. 417.93	572 lbs. 341.36	766 lbs. 295.07
424 lbs. 409.15	626 lbs. 325.27	815 lbs. 274.25
476 lbs. 379.52	671 lbs. 321.23	861 lbs. 261.63

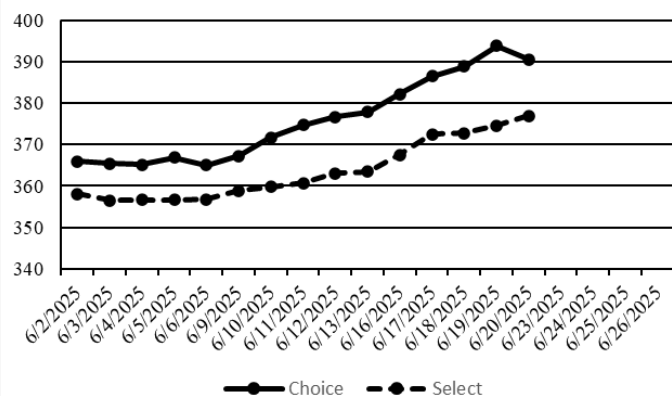
MISSOURI STEER (HEIFER) STOCKER FORMULA 6/23/2025

Monday's Missouri Stocker formula consists of **6,592 (6,062)** head with a weighted average weight of **549.64 (546.97)** lbs. and a price value of **381.85 (344.36)**, 11.01 lower (7.20 lower) than a week ago. This a rolling seven day calculated weighted value which combines all Feeder Steers reported by MDA/USDA Market News Service weighing from 400-649 lbs. in the Medium and Large 1 and Medium and Large 1-2 frame and muscle classifications, including all comment cattle except Brahman X. Heifer values are in parentheses.

NATIONAL BOXED BEEF CUTOUT VALUES

DATE	CHOICE	SELECT	TOTAL LOADS
6/16	382.11	367.47	80
6/17	386.51	372.54	105
6/18	388.87	372.74	90
6/19	393.79	374.59	75
6/20	390.50	376.95	93
5 Day Simple Average	388.36	372.86	

Boxed Beef Cuts June 2025



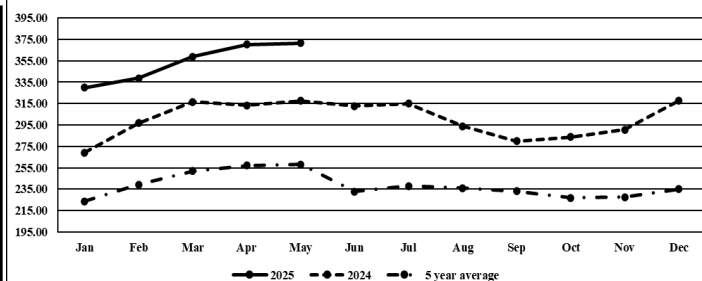
*Axis value ranges may be updated to reflect data points.

WEEKLY LIVESTOCK SLAUGHTER 6/21/25

	CATTLE	HOGS	SHEEP
Week to Date:	554,000	2,365,000	37,000
Last Week:	558,000	2,375,000	37,000
Last Year:	615,577	2,412,212	35,703

The Weekly Market Summary, as well as historical summaries, are available on our website <https://agmarketnews.mo.gov/summaries>
Market News Hotline: 1-573-522-9244
Check out the latest updates on our YouTube Channel: [MDA Market News](https://www.youtube.com/channel/UCM4M4M4M4M4M4M4M4M4M4M4)

Missouri Stocker Formula - Steers



*Graph is updated the first Monday of each month. Axis value ranges may be updated to reflect data points.

MISSOURI WEEKLY CATTLE AUCTION SUMMARY

Total Receipts: 32,235 Week Ago: 29,702 Year Ago: 27,168

Compared to last week, feeder steers and heifers sold steady to 10.00 lower. Locally barns were very mixed and uneven. Extreme heat and in many cases lower quality short or unweaned calves weighted on the market this week and as a whole the market did lose ground this week. Weather finally gave many the rain break they had been waiting for and producers headed to the hay fields in full force this week. Fescue seed and wheat harvest is also under way. Joplin Regional Stockyards held a special value-added pre-vac sale on Thursday. Despite a market that saw pressure all week the prevac cattle did find premiums over the regular sale on Monday as buyers are willing to pay for reduced health risk cattle. Several special sales at various barns in the next few weeks will provide the opportunity for several yearlings before what is typically a big mid-summer slowdown. A few stick out sales this week included 28 head of 473 lb. steers at Tina Livestock Market which sold for 435.00. Kingsville Livestock Auction sold 32 head of 547 lb. steers for 410.00 Joplin Regional Stockyards sold 85 head of 645 lb. steers at their Thursday sale for 379.00 and 103 head of 683 lb. steers on Monday at 355.00 Callaway Livestock Center sold 72 head of 720 lb. steers for 346.00 and a load of 929 lb. steers for 307.75. New Cambria Livestock Auction sold 28 head of 804 lb. steers for 318.50. Kingsville Livestock Auction sold 23 head of 509 lb. heifers for 390.00. Several loads of 700-725 lb. heifers sold this week with 152 head of 718 lb. heifers at Kingsville selling at 329.50. Boxed beef cutout values were sharply higher again this week, choice closed at 390.50, up 12.62 and Select closed at 376.95, up 13.45 compared to last Friday. Negotiated feedlot sales as of the 2:00 cutoff time for Friday afternoons report totaled just under 51K for the week. Prices turned lower this week. Live trade in the south was limited prices in the south mostly with prices ranging from 225.00-231.00, in the north live sales from 235.00-238.00 and dressed sales were mostly at 376.00. The Missouri Stocker formula consists of 6592 head with a weighted average weight of 549.64 lbs. and a price value of 381.85, 11.01 lower than last week. The steer/heifer spread is 37.49 per cwt.

SOUTHWEST MISSOURI WEEKLY SUMMARY

(Joplin and Springfield)

Receipts: 16,809 Week ago: 9,317 Year Ago: 14,594
Compared to last week, steers and heifers uneven from 15.00 lower to 5.00 higher. Slaughter cows and bulls steady to 4.00 higher.

FEEDER STEERS: Medium and Large 1

300-400 lbs.	440.00-485.00
400-500 lbs.	385.00-445.00
500-600 lbs.	350.00-405.00
600-700 lbs.	326.00-379.00
700-800 lbs.	310.00-350.00
800-900 lbs.	300.00-320.50
900-1000 lbs.	278.50-298.00

FEEDER HEIFERS: Medium and Large 1

300-400 lbs.	415.00-445.00
400-500 lbs.	360.00-440.00
500-600 lbs.	327.00-385.00
600-700 lbs.	310.00-360.00
700-800 lbs.	289.00-322.00
800-900 lbs.	263.00-286.00

FEEDER HOLSTEIN STEERS Large 3

Scarce

Scarce

SLAUGHTER COWS: Breaking and Boning (70-85% lean) 140.00-163.00; high dressing 153.00-176.00; low dressing 122.50-154.00. Lean (85-90%) 125.00-150.00.

SLAUGHTER BULLS: Yield Grade 1-2 1100-2145 lbs. 180.00-209.00; high dressing 202.50-237.00; low dressing 157.00-181.00

BRED COWS: Medium and Large 1 2-8 yrs 1060-1451 lbs 2nd/3rd stage 2600.00-2950.00; >8 yrs 1185-1520 lbs 2nd/3rd stage 2550.00-2725.00. Medium and Large 1-2 2-8 yrs 910-1640 lbs 2nd/3rd stage 1750.00-3250.00, 1st stage 2250.00-2500.00; >5 yrs 1015-1405 lbs 2nd/3rd stage 1800.00-2650.00, 1st stage 1850.00-2200.00; >8 yrs 880-1510 lbs 2nd/3rd stage 1850.00-2625.00, broken mouth 1st to 3rd stage 1700.00-2250.00 per head

COW & CALF PAIRS: Medium and Large 1 2-8 yrs 1445-1845 lbs with 150 to >300 lb calves 3650.00-3800.00 per pair. Medium and Large 1-2 2-4 yrs 1000-1300 lbs with <150 to 300 lb calves 2900.00-4000.00; 2-8 yrs 990-1455 lbs with <150 to 300 lb calves 2400.00-3950.00; 2-8 yrs 1000-1300 lbs rebred 1st stage with 150-300 lb calves 3500.00-4300.00; >8 yrs 1160-1360 lbs with 150-300 lb calves 3300.00-3800.00 per pair

SOUTH CENTRAL MISSOURI WEEKLY SUMMARY

(West Plains, Phillipsburg)

Receipts: 3,759 Week ago: 4,211 Year Ago: 3,018
Compared to last week, feeder calves steady to 10.00 lower, spots 20.00 lower early week. Yearlings uneven from 5.00 lower to 5.00 higher. Slaughter cows and bulls steady to 4.00 higher.

FEEDER STEERS: Medium and Large 1

350-400 lbs.	465.00-490.00
400-500 lbs.	406.00-455.00
500-600 lbs.	365.50-395.00
600-700 lbs.	320.00-363.00
700-800 lbs.	300.00-315.00
800-850 lbs.	292.00-312.00
900-1000 lbs.	272.00-294.00

FEEDER HEIFERS: Medium and Large 1

300-400 lbs.	405.00-422.50
Pkg 459 lbs.	375.00
500-600 lbs.	320.00-366.00
600-700 lbs.	297.00-329.00
700-800 lbs.	289.00-307.50
17 hd 855 lbs.	260.00

FEEDER HOLSTEIN STEERS: Large 3

Scarce

Scarce

SLAUGHTER COWS: Breaking and Boning (70-85% lean) 151.00-165.00; high dressing 161.50-172.00; low dressing 139.00-151.00. Lean (85-90%) 134.00-150.00

SLAUGHTER BULLS: Yield Grade 1-2 1255-2435 lbs. 181.00-199.00; high dressing 200.00-222.00; low dressing 162.00-181.00.

BRED COWS: Medium and Large 1-2 2-8 yrs 1170-1410 lbs 2nd/3rd stage 2275.00-3100.00 per head

BRED HEIFERS: Medium and Large 1 <2 yrs 1025 lbs 1st to 3rd stage 3200.00 per head

COW & CALF PAIRS: Medium and Large 1-2 2-8 yrs 1174-1350 lbs with 150-300 lb calves 3000.00-3875.00 per pair

WEST CENTRAL MISSOURI WEEKLY SUMMARY

(Kingsville, Windsor, Butler)

Receipts: 3,395 Week ago: 4,203 Year ago: 4,358
Compared to last week, steers and heifers uneven from 5.00 lower to 8.00 higher. Slaughter cows mostly steady.

FEEDER STEERS: Medium and Large 1

300-400 lbs.	440.00-515.00
400-500 lbs.	417.50-439.00
500-600 lbs.	384.00-422.00
600-700 lbs.	348.50-388.00
700-800 lbs.	312.50-357.00
800-900 lbs.	314.00-316.00

FEEDER HEIFERS: Medium and Large 1

400-500 lbs.	377.50-435.00
500-600 lbs.	343.00-390.00
600-700 lbs.	313.00-350.00
700-750 lbs.	320.00-336.00

SLAUGHTER BULLS: Yield Grade 1-2 1310-2320 lbs. 174.00-214.00; high dressing 215.00-229.00; low dressing 155.00-174.00.

SLAUGHTER COWS: Breaking and Boning (70-85% lean) 147.00-168.00; high dressing 163.00-178.00. Lean (85-90%) 123.00-159.00

BRED COWS: Medium and Large 1-2 2-8 yrs 1115-1380 lbs 2nd/3rd stage 2400.00-3050.00 per head

COW & CALF PAIRS: scarce

NORTHEAST MISSOURI WEEKLY SUMMARY

(Bowling Green, Kingdom City, Palmyra)

Receipts: 2,302 Week ago: 5,414 Year ago: 2,059
Compared to last week, steers and heifers steady to firm, spots up to 8.00 higher, except 500-550 lbs steady to 7.00 lower. Slaughter cows steady to 5.00 higher.

FEEDER STEERS: Medium and Large 1

300-400 lbs.	481.00-530.00
400-500 lbs.	440.00-474.00
500-600 lbs.	382.00-413.00
600-700 lbs.	345.50-375.00
700-800 lbs.	325.50-351.50
850-900 lbs.	310.00-316.00
54 hd 929 lbs.	307.75

FEEDER HEIFERS: Medium and Large 1

350-400 lbs.	416.00-428.00
400-500 lbs.	374.00-420.00
500-600 lbs.	340.00-374.00
600-700 lbs.	324.00-333.00
Pkg 715 lbs.	308.00
Pkg 956 lbs.	247.00

SLAUGHTER BULLS: Yield Grade 1-2 1350-2570 lbs. 189.00-198.00; high dressing 203.00-224.00; low dressing 167.00-170.00.

SLAUGHTER COWS: Breaking and Boning, (70-85% lean) 150.00-160.00; high dressing 160.00-178.00. Lean (85-90%) 135.00-149.00.

SLAUGHTER STEERS: Choice 2-3 232.00-238.50. Select and Choice 1-3 229.00-231.00. Select 1-2 220.00-222.00.

SLAUGHTER HEIFERS: Choice 2-3 233.50-238.50. Select and Choice 2-3 231.00-233.00.

BRED COWS: Medium and Large 1-2 2-8 yrs 1168-1408 lbs 2nd/3rd stage 2725.00-3300.00; >5 yrs 1100-1450 lbs 2nd/3rd stage 2500.00-2625.00; broken mouth 1249 lbs 2nd stage 2125.00 per head

COW CALF PAIRS: Medium and Large 1-2 2-8 yrs 1200-1350 lbs with 150-300 lb calves 3650.00-3950.00 per pair

NORTH CENTRAL MISSOURI WEEKLY SUMMARY

(Macon, Unionville, Green City, New Cambria)

Receipts: 1,350 Week ago: 2,076 Year ago: 0
Compared to two weeks ago, steers mostly 3.00 to 7.00 lower and heifers uneven from 5.00 lower to 5.00 higher. Slaughter cows 3.00 to 4.00 higher.

*Some sale barns on a bi-weekly schedule and may not have a sale each week.

FEEDER STEERS: Medium and Large 1

500-600 lbs.	394.50-420.00
600-700 lbs.	337.50-373.00
700-800 lbs.	317.50-350.50
28 hd 804 lbs.	318.50

FEEDER HEIFERS: Medium and Large 1

450-500 lbs.	380.00-411.00
500-600 lbs.	333.00-380.00
600-700 lbs.	315.50-338.00
700-800 lbs.	295.00-326.00

SLAUGHTER BULLS: Yield Grade 1-2 1230-2250 lbs. 212.00-219.00

SLAUGHTER COWS: Breaking and Boning (70-85% lean) 153.00-162.00; high dressing 161.00-166.00. Lean (85-90%) 139.00-153.00

BRED COWS: Scarce

COW/CALF PAIRS: Scarce

SOUTHEAST MISSOURI WEEKLY SUMMARY

(Jackson and Farmington)

Receipts: 1,103 Week ago: 1,140 Year ago: 1,025
Compared to last week, steers and heifers uneven from 14.00 lower to 2.00 higher. Slaughter cows and bulls steady.

FEEDER STEERS: Medium and Large 1

300-400 lbs. 400.00-500.00
400-500 lbs. 377.00-455.00
500-600 lbs. 344.00-395.00
600-700 lbs. 320.00-357.00
700-800 lbs. 280.00-327.00
800-900 lbs. 260.00-285.50

FEEDER HEIFERS: Medium and Large 1

300-400 lbs. 350.00-407.00
400-500 lbs. 335.00-372.00
500-600 lbs. 300.00-358.00
600-700 lbs. 275.00-317.00
700-800 lbs. 260.00-281.00
Pkg 830 lbs. 265.00

SLAUGHTER BULLS: Yield
Grade 1-2 1130-1850 lbs 150.00-
177.00; high dressing 175.00-
196.00.

SLAUGHTER COWS: Breaking
and Boning (75-85% lean) 127.00-
140.00; high dressing 150.00-
184.00. Lean (85-90% lean) 86.00-
123.00

BRED COWS: Medium and Large
2 2-8 yrs 1015-1325 lbs 2nd/3rd
stage 1500.00-2550.00 per head

COW & CALF PAIRS: Medium
and Large 2

EAST CENTRAL MISSOURI WEEKLY SUMMARY

(Cuba, Vienna)

Receipts: 2,011 Week Ago: 2,587 Year ago: 1,279
Compared to last week, steers under 600 lbs 10.00 lower to 5.00 higher, over 600 lbs steady to 4.00 higher. Heifers steady to 5.00 higher. Slaughter cows steady to 3.00 higher.

FEEDER STEERS: Medium and Large 1

300-400 lbs. 442.50-480.00
400-500 lbs. 412.00-478.00
500-600 lbs. 370.00-414.00
600-700 lbs. 337.50-368.00
700-750 lbs. 325.00-339.50
14 hd 825 lbs. 298.00

FEEDER HEIFERS: Medium and Large 1

400-500 lbs. 372.50-427.00
500-600 lbs. 326.00-370.00
600-700 lbs. 304.00-340.00
700-750 lbs. 298.50-301.00
900-1000 lbs. 244.00-254.00

SLAUGHTER BULLS: Yield
Grade 1-2 1290-2225 lbs 174.50
-199.00; high dressing 219.00-
225.00; low dressing ind 180.00

SLAUGHTER COWS: Breaking
and Boning, (70-85% lean) 148.00-
164.00; high dressing 156.00-
168.00. Lean (85-90%) 133.50-
149.00

BRED COWS: Medium and
Large 1-2 2-8 yrs 1040-1340 lbs
1st/2nd stage 2275.00-2700.00;
>5 yrs 1142-1265 lbs 2nd stage
2300.00-2475.00 per head
BRED HEIFERS: Medium and
Large 1 1009-1158 lbs 2nd stage
3350.00-3825.00 per head

COW & CALF PAIRS: Scarce

NORTHWEST MISSOURI WEEKLY SUMMARY

(Tina)

Receipts: 1,506 Week Ago: 754 Year Ago: 835
Compared to last week, steers and heifers higher undertone with 400-500 lbs steers as much as 15.00 to 20.00 higher. Slaughter cows mostly steady to firm. Slaughter bulls 5.00 to 8.00 higher.

FEEDER STEERS: Medium and Large 1

400-500 lbs. 435.00-470.00
500-600 lbs. 403.00-467.50
600-700 lbs. 359.00-390.50
700-800 lbs. 306.00-339.00
179 hd 976 lbs. 285.25

FEEDER HEIFERS: Medium and Large 1

350-400 lbs. 445.00-450.00
400-500 lbs. 390.00-415.00
500-600 lbs. 353.00-383.00
600-700 lbs. 320.00-335.50
131 hd 726 lbs. 325.00

SLAUGHTER BULLS:
Yield Grade 1-2 1315-2045 lbs
190.00-205.50; high dressing
206.00-225.50; low dressing ind
165.00.

SLAUGHTER COWS: Breaking
and Boning, (70-85% lean) 147.00-
164.00; high dressing 155.00-
170.25. Lean (85-90%) 125.00-
134.00.

BRED COWS: Scarce

COW/CALF PAIRS: Scarce

AFTERNOON NATIONAL SLAUGHTER CATTLE REVIEW

So far for Friday, negotiated cash trade has been mostly limited on moderate demand in the Southern Plains with a few early purchases at mostly 228.00, but not enough for an adequate market test. The latest established market in the Texas Panhandle was last week at 235.00. The latest established market in Kansas was last week at 235.00. Negotiated cash trade has been limited on moderate demand in Nebraska and the Western Cornbelt. The latest established market in Nebraska was Wednesday with live purchases at 236.00 and dressed purchases at mostly 376.00. The latest established market in the Western Cornbelt was Wednesday with live purchases from 236.00-238.00 and dressed purchases at 376.00.

Negotiated Cash Sales:

Confirmed:	4,484	Week Ago:	11,522	Year Ago:	22,417
Week to date:	50,940	Week Ago:	48,728	Year Ago:	14,002

<u>Live Basis</u>	<u>Steers</u>	<u>Heifers</u>
Over 80% Choice	228.00-236.00, avg 234.17	236.00
65-80% Choice	228.00-230.00, avg 229.33	228.00
35-65% Choice	228.00	-
0-35% Choice	-	-
Total All Grades	228.00-236.00, avg 232.74	228.00-236.00, avg 230.18
<u>Dressed Basis</u>		
Over 80% Choice	376.00	-
65-80% Choice	-	-
35-65% Choice	-	-
0-35% Choice	-	-
Total All Grades	376.00	-

<u>All Beef Type</u> <u>Steers/Heifers</u>	<u>Head</u>	<u>Avg Wt</u>	<u>Price Range</u>	<u>Wtd Avg</u>
Live FOB	3,799	1383.9	228.00-238.00	232.52
Live Del	35	1400.0	238.00	238.00
Dressed Del	363	932.4	376.00-378.00	376.24
Dressed FOB	232	1023.8	376.00	376.00

WEEKLY COMMODITY FUTURES TRENDS

Compared to last week, Live Cattle 2.08 to 2.63 lower, Lean Hogs 0.63 to 3.30 higher, Feeder Cattle 3.00 to 3.97 lower.

Daily Futures Closes

	Mon.	Tues.	Wed.	Thu.	Fri.
Cattle					
Jun	227.02	223.25	224.30	Holiday	223.02
Aug	215.55	210.65	211.67		209.82
Oct	212.90	208.55	209.22		207.35
Dec	213.25	209.37	209.90		208.32
Feb	212.92	209.45	209.90		208.35
Lean Hogs					
Jul	111.80	111.65	112.17	Holiday	112.77
Aug	112.67	111.80	112.00		112.45
Oct	96.17	95.17	95.15		96.02
Dec	86.77	86.00	86.05		86.62
Feb	87.92	87.07	87.30		87.65
Fdr Cattle					
Aug	310.22	303.35	304.17	Holiday	302.45
Sep	309.57	302.90	303.80		302.22
Oct	307.37	301.00	301.90		300.35
Nov	304.62	298.57	299.27		297.75
Jan	298.95	293.07	293.72		292.17
Milk					
Jun	18.72	18.69	18.66	Holiday	18.67
Jul	17.96	17.96	17.68		17.51
Aug	18.59	18.61	18.20		18.11

WEEKLY COMMODITY GRAIN FUTURES TRENDS

Compared to last week, Soybeans Jul 0.01 lower, others 0.02 to 0.08 higher, Wheat 0.24 to 0.26 higher, Corn Jul 0.16 lower, others 0.01 to 0.03 lower, KC Wheat 0.23 to 0.26 higher, Soybean Meal 5.10 to 7.80 lower.

Daily Grain Futures Closes

	Mon.	Tues.	Wed.	Thu.	Fri.
Soybeans					
Jul	1069 3/4	1074	1074 3/4	Holiday	1068
Aug	1071 3/4	1076 1/4	1076 3/4		1071 1/2
Sep	1053	1060 3/4	1061 1/4		1054
Nov	1060 1/2	1067 3/4	1068 1/4		1060 3/4
Jan	1073 3/4	1080 3/4	1081 1/2		1075
Wheat					
Jul	536 1/2	549	574 1/4	Holiday	567 3/4
Sep	552 1/4	565 1/2	590 1/2		583 1/2
Dec	573 3/4	587	612 1/4		606
Mar	593	606	631		625 1/2
May	604	616 1/2	641 1/4		635 3/4
Corn					
Jul	434 3/4	431 1/2	433 1/2	Holiday	428 3/4
Sep	419 3/4	423 3/4	429		425 1/2
Dec	435	438 3/4	444		441 1/4
Mar	450 1/4	453 3/4	459 1/4		456 3/4
May	460 1/4	463 1/2	468 3/4		466 1/2
KC Wheat					
Jul	536	547 3/4	571 1/4	Holiday	563 1/4
Sep	550 3/4	562 1/2	586 1/2		578 3/4
Dec	572 1/4	584	608 1/2		602
Mar	591 1/2	603 1/4	627 3/4		621 1/2
May	602 1/4	613 3/4	638 1/4		632
SB Meal					
Jul	283.70	285.10	284.90	Holiday	284.10
Aug	287.50	289.40	289.10		288.20
Sep	290.30	292.30	292.20		291.50
Oct	291.80	294.00	293.80		293.20
Dec	296.30	298.60	298.30		298.10

MISSOURI GRAIN WEEKLY TRENDS

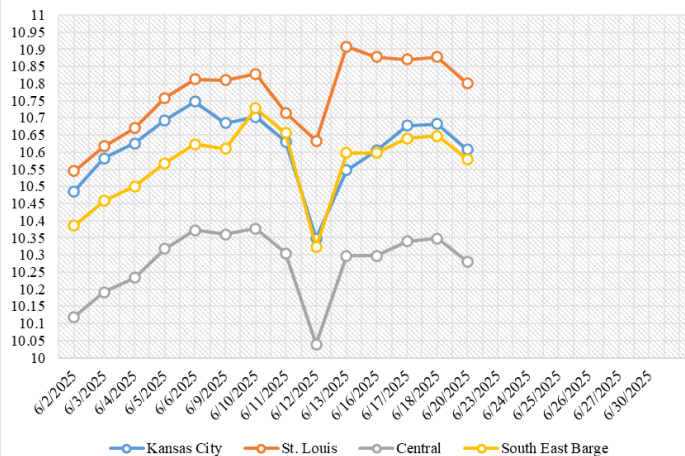
Compared to last week, Soybeans 0.11 lower to 0.06 higher, Wheat 0.17 to 0.29 higher, Corn 0.13 to 0.17 lower, Sorghum no trend due to lack of bids.

Area	#1 Soybeans	#2 Soft Wheat	#2 Corn	#2 Grain Sorghum
Kansas City				
Friday**	10.45-10.65	5.39	4.55	3.55
Monday	10.51-10.71	5.32	4.45	3.45
Tuesday	10.58-10.78	5.44	4.45	3.42
Wednesday	10.58-10.78	5.69	4.47	3.44
Thursday	Holiday			
Friday	10.51-10.71	5.68	4.42	3.39
St. Louis				
Friday**	10.91	5.49-5.51	4.68	—
Monday	10.88	5.37-5.44	4.58	—
Tuesday	10.87	5.49-5.56	4.55	—
Wednesday	10.88	5.72-5.81	4.57	—
Thursday	Holiday			—
Friday	10.80	5.66-5.75	4.51	—
Central				
Friday**	10.25-10.35	4.94-5.24	4.20-4.25	—
Monday	10.25-10.35	4.87-5.17	4.10-4.15	—
Tuesday	10.29-10.39	4.99-5.29	4.07-4.12	—
Wednesday	10.30-10.40	5.24-5.54	4.09-4.14	—
Thursday	Holiday			—
Friday	10.23-10.33	5.18-5.48	4.04-4.09	—
S.E. MO				
Friday**	10.35-10.85	—	4.62	—
Monday	10.35-10.85	—	4.52	—
Tuesday	10.39-10.89	—	4.49	—
Wednesday	10.40-10.90	—	4.51	—
Thursday	Holiday	—	—	—
Friday	10.33-10.83	—	4.46	—

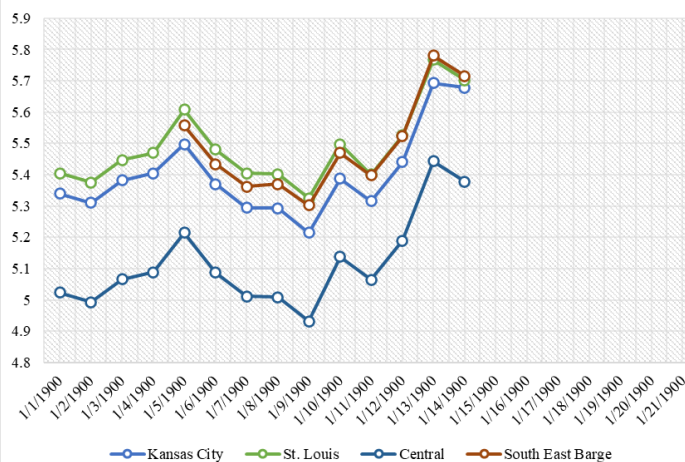
(PRICES PER BUSHEL) *NEW CROP **PREVIOUS WEEK'S PRICES
*Bids calculated using Kansas City, St. Louis, and St. Joseph bids

MONTHLY GRAIN CROP

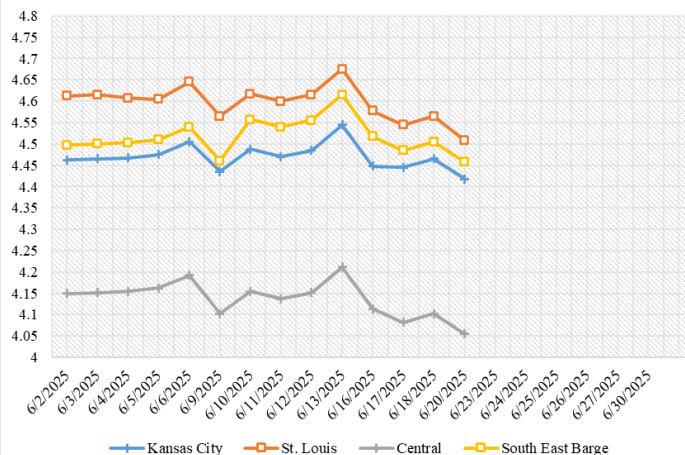
June 2025 Soybean Bids



June 2025 Wheat Bids



June 2025 Corn Bids



*Axis value ranges may be updated to reflect data points.
Only dates in which markets are trading and only current cash bids are represented.

WHOLESALE FEEDSTUFFS PRICES (DOLLARS PER TON-BULK BASIS)

Area	Cottonseed Meal 41%	Soybean Meal 46.5-48%	Corn Gluten Pellets 21%	Wheat Middlings
Kansas City	297.50	261.10	196.00	91.67
St. Louis	292.50	n/a	191.00	85.00

MISSOURI CROP PROGRESS REPORT 6/16/25

There were 3.8 days suitable for fieldwork in the week ending June 15, 2025. Topsoil moisture supply was rated 1 percent very short, 7 percent short, 65 percent adequate, and 27 percent surplus. Subsoil moisture supply was rated 1 percent very short, 10 percent short, 73 percent adequate, and 16 percent surplus. Corn emerged reached 97 percent, compared to the 5-year average of 96 percent. Corn condition was rated 1 percent very poor, 4 percent poor, 20 percent fair, 66 percent good, and 9 percent excellent. Soybeans planted reached 86 percent, compared to the 5-year average of 85 percent. Soybeans emerged reached 75 percent, compared to the 5-year average of 71 percent. Soybean condition was rated 1 percent very poor, 4 percent poor, 23 percent fair, 66 percent good, and 6 percent excellent. Winter wheat headed reached 99 percent, compared to the 5-year average of 100 percent. Winter wheat harvested reached 13 percent, compared to the 5-year average of 22 percent. Winter wheat condition was rated 5 percent poor, 26 percent fair, 57 percent good, and 12 percent excellent.

	Week Ending			
	6/15/24	6/8/25	6/15/25	5 yr average
Corn Emerged	96	93	97	96
Soybeans Planted	85	83	86	85
Soybeans Emerged	76	69	75	71
Winter Wheat Headed	100	99	99	100
Winter Wheat Harvested	34	2	13	22
Alfalfa hay 1st cutting	85	60	75	80
Alfalfa hay 2nd cutting	-	-	2	-
Other hay cut	54	34	44	51

CATTLE ON FEED

Cattle and calves on feed for the slaughter market in the United States for feedlots with capacity of 1,000 or more head totaled 11.4 million head on June 1, 2025. The inventory was 1 percent below June 1, 2024.

Placements in feedlots during May totaled 1.89 million head, 8 percent below 2024. Net placements were 1.82 million head. During May, placements of cattle and calves weighing less than 600 pounds were 335,000 head, 600-699 pounds were 275,000 head, 700-799 pounds were 450,000 head, 800-899 pounds were 516,000 head, 900-999 pounds were 230,000 head, and 1,000 pounds and greater were 80,000 head.

Marketings of fed cattle during May totaled 1.76 million head, 10 percent below 2024.

Other disappearance totaled 62,000 head during May, unchanged from 2024.

MISSOURI WEEKLY HAY SUMMARY 6/12/25

Special Note: Beginning 6/19/25, this report will be published biweekly. Any questions or concerns can be emailed to mymarketnews@usda.gov.

Producers are getting some hay baled as small windows of weather allow. Thus far there has not been any extended periods of days in which farmers can just go without having to look at weather and calculate if the risk of getting hay wet is worth it or not. Starting to see some new crop hay come to market. Demand is light as pastures in the state are some of the best in the nation with 88% rated good to excellent. Hay prices are steady to weak. The supply of hay is moderate, and demand is light to moderate. The Missouri Department of Agriculture has a hay directory at <https://apps.mda.mo.gov/haydirectory> or visit the University of Missouri Extension feed stuff finder at <https://feedstufffinder.org>

Alfalfa - Supreme 250.00-300.00, small square 10.00-15.00 per bale
Alfalfa - Premium 175.00-225.00
Alfalfa - Good 150.00-175.00, small square 6.00-10.00 per bale
Alfalfa - Fair 125.00-150.00
Mixed Grass—Premium 150.00-200.00
Mixed grass - Good/Premium 100.00-150.00
Mixed grass-Fair/Good 75.00-125.00, small square 3.00-7.00 per bale
Mixed grass - Fair 25.00-50.00 per large round bale
Wheat straw - 4.00-7.00 per small square bale

Please Note: The above volumes (tonnage, acres, and bales) listed are for confirmed trades only, it does not include estimated volume (tonnage) for bids or offers to the trade. List your hay for sale at: [Hay Listing Online Form](#). Explanation of Hay Quality Guidelines: [Hay Quality Designation Guidelines](#). Glossary of Terms: [Livestock, Poultry, & Grain Hay Terms](#)

MISSOURI WEEKLY SHEEP/GOAT AUCTION SUMMARY 6/23/25

Receipts: 2,397 Week Ago: 2,944 Last Year: 4,067

SHEEP: Feeder lambs Medium and Large 1-2 30-40 lbs 185.00-212.00; 40-50 lbs 152.50-190.00. Medium and Large 2 20-30 lbs 150.00-175.00. Small and Medium 1-2 hair 30-50 lbs 177.50-227.50, thin 150.00-185.00. Slaughter lambs Choice and Prime 1-3 w/s 55-80 lbs 205.00-217.50. Choice and Prime 1 woolled 55-80 lbs 200.00-220.00; 80-90 lbs 185.00-190.00. Choice and Prime 1-2 woolled 40-80 lbs 180.00-280.00. Choice and Prime 1 hair 50-70 lbs 200.00. Choice and Prime 1-2 hair 35-45 lbs 200.00-215.00; 50-60 lbs 185.00-220.00; 60-80 lbs 200.00-235.00; 80-90 lbs 175.00-200.00. Choice and Prime 1-3 hair 50-80 lbs 210.00-245.00; 80-105 lbs 202.50-225.00. Choice 1-3 hair 50-95 lbs 187.50-205.00. Good 1-2 hair pkg 55 lbs 175.00.

Slaughter ewes Utility and Good 1-3 pkg 122 lbs 105.00; pkg 152 lbs 67.50. Utility and Good 2 75-165 lbs 100.00-155.00. Good 2-3 hair 105-122 lbs 112.50-130.00. Utility and Good 1-3 hair 70-130 lbs 80.00-102.50. Slaughter bucks 1-2 100-200 lbs 110.00-210.00. Bucks 1-2 hair 100-135 lbs 112.50-122.50.

Replacement ewes hair Small and Medium 1-2 1-2 yrs 71 lbs exp 197.50; 4-6 yrs 70-125 lbs exp 125.00-160.00. Families Small and Medium 1-2 2-4 yrs 90 lbs exp with <20 lb lambs 157.50/fam.

GOATS: Feeder kids Selection 1 30-50 lbs 225.00-340.00. Selection 1-2 25-30 lbs 150.00-192.00. Selection 2 25-50 lbs 202.50-292.50. Selection 3 25-30 lbs 132.00-182.00; 30-50 lbs 117.50-202.50, pygmies 120.00-142.50.

Slaughter kids Selection 1 40-50 lbs 200.00-300.00; 50-90 lbs 300.00-400.00. Selection 1-2 40-50 lbs 250.00-285.00. Selection 2 50-60 lbs 210.00-270.00; 60-70 lbs 300.00-305.00. Selection 3 50-70 lbs 170.00-180.00.

Slaughter nannies Selection 1-2 55-75 lbs 140.00-197.50, pygmies 125.00-160.00; 80-100 lbs 107.50-165.00; 100-160 lbs 110.00-175.00. Slaughter bucks 70-195 lbs 147.50-200.00. Selection 2 75-80 lbs 150.00-160.00. Wethers Selection 1-2 60-100 lbs 200.00-220.00.

Replacement nannies Selection 1-2 1-2 yrs 50-100 lbs exp 190.00-260.00; 2-4 yrs 65-115 lbs exp 182.00-355.00.

Families Selection 1-2 2-4 yrs 80-95 lbs exp with <20 lb kids 165.00-225.00/fam

Explanatory Notes: Stage - Represents estimated lambing/kidding period (Open, Exp=exposed, Bred, Fall = Sep-Nov, Win = Dec-Feb, Spr = Mar-May, Sum=Jun-Aug; w/s = woolled and shorn; /hd= per head; /fam=per family
All price CWT unless otherwise noted.

MISSOURI DROUGHT MONITOR

Date	None	D0	D1	D2	D3	D4
6/17/25	80.27	14.48	4.25	0	0	0
6/10/25	81.58	14.46	3.96	0	0	0
6/18/24	82.17	12.85	4.98	0	0	0

Reflects percentage of Missouri impacted by drought. D0 Abnormally Dry; D1 Moderate Drought; D2 Severe Drought; D3 Extreme Drought; D4 Exceptional Drought

NATIONAL DIRECT DELIVERED FEEDER PIG REPORT

6/20/25 Receipts: 127,352 Week ago: 165,335 Year Ago: 117,919
Early weaned pigs steady to 1.00 higher and feeder pigs mostly 4.00 higher.

Cash 80,871 head 40.00-64.00, weighted average 54.48

Formula 26,531 head 44.65-63.94, weighted average 50.82

Feeder pigs 40 pounds basis: Cash 19,950 head 83.00-94.00, weighted average 88.15

NATIONAL DAILY DIRECT PRIOR DAY HOG REPORTS 6/20/25

BARROWS AND GILTS (Carcass Basis): .570 head

Base Carcass Price 100.00-110.00, weighted average 105.12

SOWS (Live Basis): 8,282 head

300-500 lbs. 25.00-78.00

Over 500 lbs. 52.00-78.84

MISSOURI WEEKLY DIRECT SLAUGHTER CATTLE REPORT 6/20/25

Weekly Receipts: 280 Week ago: 400 Year ago: 280

Trading as of Friday morning, flat dressed prices 4.00 lower and grid dressed sales 4.00 lower.

LIVE STEERS & HEIFERS:

No sales reported

DRESSED STEERS & HEIFERS:

4 loads flat 376.00

GRADE AND EIGHT (Grid): 3 loads Thu 381.00

Click here for the current [National Crop Progress](#)

Click here for the current [Missouri Crop Progress](#)

The current hay directory can be found at: [Hay Directory](#).