

Weekly Market Summary

Published by:
Missouri Department of Agriculture
Ag Business Development Division
Market News Program



Chris Chinn, Director
Jill Wood, Division Director
Tony Hancock, Editor
<http://www.ams.usda.gov/marketnews.htm>
<http://www.ams.usda.gov/marketnews.htm>

Michael Kehoe, Governor

Volume XLV, Number 26 ♦ P.O. Box 630, Jefferson City, MO 65102 ♦ (573) 751-4211 ♦ Mon, June 30, 2025

MISSOURI WEEKLY FEEDER CATTLE WEIGHTED AVERAGE REPORT

Feeder Cattle Receipts: 19,226 Week ago: 28,428 Year ago: 19,471
Steers and Heifers Medium and Large 1—Weighted average weights and prices

STEERS: Medium and Large 1

333 lbs. 476.65	523 lbs. 401.62	726 lbs. 329.53	912 lbs. 299.53
368 lbs. 448.11	570 lbs. 381.86	773 lbs. 322.83	979 lbs. 284.28
428 lbs. 441.01	623 lbs. 364.07	818 lbs. 310.20	
468 lbs. 427.53	669 lbs. 349.14	884 lbs. 304.36	

HEIFERS: Medium and Large 1

339 lbs. 417.56	521 lbs. 359.14	732 lbs. 305.52
379 lbs. 419.52	570 lbs. 337.20	784 lbs. 300.67
421 lbs. 396.46	621 lbs. 329.30	829 lbs. 283.02
471 lbs. 377.88	674 lbs. 335.62	870 lbs. 266.71

MISSOURI STEER (HEIFER) STOCKER FORMULA 6/30/2025

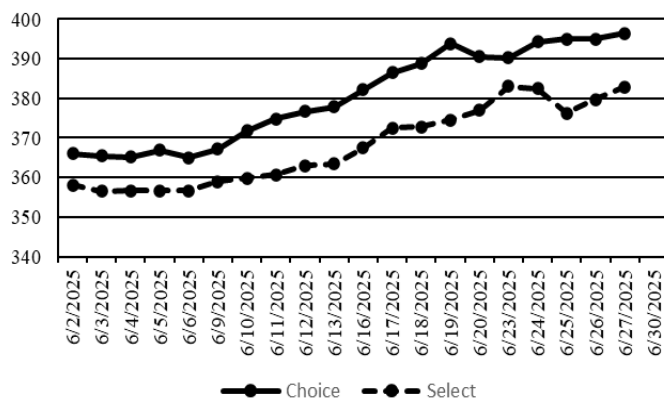
Monday's Missouri Stocker formula consists of 3,714 (3,355) head with a weighted average weight of 554.62 (539.90) lbs. and a price value of 374.31 (340.93), 7.54 lower (3.43 lower) than a week ago.

This a rolling seven day calculated weighted value which combines all Feeder Steers reported by MDA/USDA Market News Service weighing from 400-649 lbs. in the Medium and Large 1 and Medium and Large 1-2 frame and muscle classifications, including all comment cattle except Brahman X. Heifer values are in parentheses.

NATIONAL BOXED BEEF CUTOUT VALUES

DATE	CHOICE	SELECT	TOTAL LOADS
6/23	390.22	383.10	88
6/24	394.25	382.41	78
6/25	394.94	376.29	105
6/26	395.05	379.74	91
6/27	396.49	382.93	80
5 Day Simple Average	394.19	380.89	

Boxed Beef Cuts June 2025



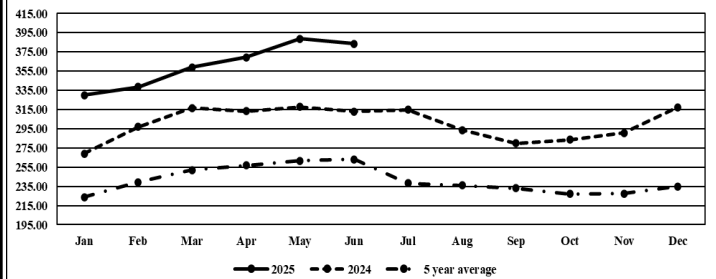
*Axis value ranges may be updated to reflect data points.

WEEKLY LIVESTOCK SLAUGHTER 6/28/25

	CATTLE	HOGS	SHEEP
Week to Date:	560,000	2,408,000	37,000
Last Week:	560,000	2,357,000	37,000
Last Year:	610,420	2,417,344	34,843

The Weekly Market Summary, as well as historical summaries, are available on our website <https://agmarketnews.mo.gov/summaries>
Market News Hotline: 1-573-522-9244
Check out the latest updates on our YouTube Channel: [MDA Market News](https://www.youtube.com/channel/UCM4M4M4M4M4M4M4M4M4M4M4)

Missouri Stocker Formula - Steers



*Graph is updated the first Monday of each month. Axis value ranges may be updated to reflect data points.

MISSOURI WEEKLY CATTLE AUCTION SUMMARY

Total Receipts: 21,146 Week Ago: 32,235 Year Ago: 22,283

Compared to last week, feeder steers and heifers sold steady to 10.00 lower. Offerings were limited due to excessive heat across the state, several sales remained dark or did not have enough to establish or test the market. As the Fourth of July approaches many sales will be off next week as well. There are some auctions however that have yearling specials and customer BBQs around the holiday. Unionville Livestock Market held theirs on Tuesday and although prices were lower there were still some impressive quotes. The excessive heat has also brought in a lot of unstable weather. Moisture for much of the state is not a problem as various storms have dump several inches of rain over areas whenever a cloud decided to build and empty. Mud developed and several cases of flash flooding in the southern part of the state. Most of this week's stick out sales came from the Unionville Livestock Market's customer appreciation sale. 97 head of 528 lb. steers sold for 419.50, 70 head of 670 lb. steers sold for 379.50, 28 head of 707 lb. steers sold for 350.50, and 4 loads of 887-895 lb. steers sold for 306.50-310.25. The largest draft of the week was 601 head of 863 lb. steers at Joplin Regional Stockyards which sold for 318.00. Kingsville Livestock Auction sold 22 head of 764 lb. steers for 335.00. On the heifer side of the market Unionville Livestock Market sold 27 head of 525 lb. heifers for 384.00. Lolli Brothers Livestock Market sold 8 loads of 660-697 lb. heifers from 338.25-345.00 and a load of 726 lb. heifers 320.50. Boxed beef cutout values were sharply higher again this week, choice closed at 396.51, up 6.01 and Select closed at 382.95, up 6.00 compared to last Friday. Negotiated feedlot sales as of the 2:00 cutoff time for Friday afternoons report totaled just over 41K for the week. Prices continued lower this week. Live trade in the south 222.00-225.00, in the north live sales from 229.00-233.00 and dressed sales were 365.00-373.50. That makes live sales 3.00 -6.00 lower and dressed sales 6.00-8.00 lower. The Missouri Stocker formula consists of 3714 head with a weighted average weight of 554.62 lbs. and a price value of 374.31, 7.54 lower than last week. The steer/heifer spread is 33.97 per cwt.

SOUTHWEST MISSOURI WEEKLY SUMMARY

(Joplin and Springfield)

Receipts: 10,938 Week ago: 16,809 Year Ago: 10,568
Compared to last week, early week calves steady to 10.00 lower and yearlings steady to 8.00 higher. Late week feeders mostly 5.00 to 15.00 higher on limited comparisons. Slaughter cows 2.00 to 5.00 higher. Slaughter bulls steady to 5.00 higher.

FEEDER STEERS: Medium and Large 1

300-400 lbs.	435.00-490.00
400-500 lbs.	400.00-427.00
500-600 lbs.	364.00-400.00
600-700 lbs.	330.00-365.00
700-800 lbs.	310.00-331.00
800-900 lbs.	297.00-315.00
900-1000 lbs.	276.00-305.50

FEEDER HEIFERS: Medium and Large 1

300-400 lbs.	420.00-450.00
400-500 lbs.	364.00-420.00
500-600 lbs.	325.00-377.50
600-700 lbs.	311.00-348.00
700-800 lbs.	292.00-318.00
800-900 lbs.	266.50-286.00

FEEDER HOLSTEIN STEERS Large 3

300-400 lbs.	270.00-302.50
10 hd 428 lbs.	267.50
13 hd 574 lbs.	272.50
72 hd 761 lbs.	255.75
800-900 lbs.	165.00-224.00
900-950 lbs.	200.00-240.00

SLAUGHTER COWS: Breaking and Boning (70-85% lean) 144.00-168.00; high dressing 157.50-180.00; low dressing 130.00-152.00. Lean (85-90%) 132.00-150.00.

SLAUGHTER BULLS: Yield Grade 1-2 1050-2225 lbs. 181.00-206.00; high dressing 205.00-232.00; low dressing 162.50-183.00

BRED COWS: Medium and Large 1 2-8 yrs 1005-1620 lbs 2nd/3rd stage 2650.00-3075.00 per head. Medium and Large 1-2 2-8 yrs 1020-1550 lbs 2nd/3rd stage 2000.00-2700.00, 1st stage 2100.00-2425.00; >8 yrs 1090-1258 lbs 2nd/3rd stage 2000.00-2450.00, broken mouth 2nd/3rd stage 1975.00-2400.00 per head

COW & CALF PAIRS: Medium and Large 1-2 2-8 yrs 985-1310 lbs with 150-300 lb calves 2650.00-3500.00 per pair

SOUTH CENTRAL MISSOURI WEEKLY SUMMARY

(West Plains, Phillipsburg)

Receipts: 1,795 Week ago: 3,759 Year Ago: 3,616
Compared to last week, too few for an adequate market comparison, however calves traded steady to weak and yearlings steady to firm. Slaughter cows and bulls steady to 2.00 higher.

FEEDER STEERS: Medium and Large 1

Pkg 352 lbs.	440.00
Pkg 533 lbs.	385.00
Pkg 569 lbs.	369.00
36 hd 657 lbs.	320.00
700-750 lbs.	322.00-325.50

FEEDER HEIFERS: Medium and Large 1

300-400 lbs.	390.00-410.00
400-500 lbs.	345.00-367.50
500-600 lbs.	310.00-347.50
600-650 lbs.	308.00-316.00

FEEDER HOLSTEIN STEERS: Large 3

Pkg 456 lbs.	247.50
--------------	--------

SLAUGHTER COWS: Breaking and Boning (70-85% lean) 152.00-166.00; high dressing 158.50-173.00; low dressing 136.00-152.00. Lean (85-90%) 126.00-150.00

SLAUGHTER BULLS: Yield Grade 1-2 1300-2155 lbs. 180.00-204.00; high dressing 206.00-228.00; low dressing 165.00-179.00.

BRED COWS: Medium and Large 1-2 2-8 yrs 1077-1377 lbs 1st to 3rd stage 2050.00-2900.00 per head

BRED HEIFERS: Medium and Large 1-2 <2 yrs 905 lbs 2nd/3rd stage 2400.00 per head

COW & CALF PAIRS: Medium and Large 1-2 2-8 yrs 1175-1320 lbs rebred 1st stage with 150-300 lb calves 3100.00-3550.00 per pair

WEST CENTRAL MISSOURI WEEKLY SUMMARY

(Kingsville, Windsor, Butler)

Receipts: 1,352 Week ago: 3,395 Year ago: 1,609
Compared to last week, steers and heifers mostly steady on limited comparisons. Slaughter cows and bulls steady to firm.

FEEDER STEERS: Medium and Large 1

300-400 lbs.	457.00-504.00
400-500 lbs.	435.00-470.00
500-600 lbs.	390.00-406.00
600-700 lbs.	345.50-385.00
700-800 lbs.	325.00-338.00
23 hd 852 lbs.	310.50

FEEDER HEIFERS: Medium and Large 1

300-400 lbs.	460.00-520.00
Pkg 403 lbs.	404.00
500-550 lbs.	369.00-384.00
600-700 lbs.	320.00-328.00

SLAUGHTER BULLS: Yield Grade 1-2 1180-2245 lbs. 182.00-208.00; high dressing 213.00-215.00; low dressing 169.00-182.00.

SLAUGHTER COWS: Breaking and Boning (70-85% lean) 146.00-166.50; high dressing 164.00-173.00. Lean (85-90%) 130.00-147.00

BRED COWS: Medium and Large 1-2 2-8 yrs 1225-1510 lbs 1st to 3rd stage 2100.00-2550.00 per head

COW & CALF PAIRS: scarce

NORTHEAST MISSOURI WEEKLY SUMMARY

(Bowling Green, Kingdom City, Palmyra)

Receipts: 2,666 Week ago: 2,302 Year ago: 2,143
Compared to last week, steers mostly steady to 10.00 lower, heifers under 650 lbs mostly 5.00 to 10.00 lower, 8 pot loads 660-700 lbs firm to higher undertone. Slaughter cows firm to 10.00 higher.

FEEDER STEERS: Medium and Large 1

350-400 lbs.	437.50-485.00
400-500 lbs.	405.00-421.00
500-600 lbs.	362.50-409.00
600-700 lbs.	330.00-375.00
700-800 lbs.	320.00-334.50
800-900 lbs.	300.25-316.25
950-1000 lbs.	284.85-289.00

FEEDER HEIFERS: Medium and Large 1

400-500 lbs.	370.00-393.00
500-600 lbs.	334.00-371.00
600-700 lbs.	305.00-325.00

SLAUGHTER BULLS: Yield Grade 1-2 1200-2360 lbs. 184.00-209.00; high dressing 213.00-227.00

SLAUGHTER COWS: Breaking and Boning, (70-85% lean) 150.50-168.00; high dressing 164.00-182.80. Lean (85-90%) 137.00-154.00.

SLAUGHTER STEERS: Choice 2 -3 222.00-239.00. Select and Choice 2-3 226.00-228.00.

SLAUGHTER HEIFERS: Choice 2-3 221.00-237.50. Select and Choice 1-3 214.00-229.50.

BRED COWS: Scarce

COW CALF PAIRS: Scarce

NORTH CENTRAL MISSOURI WEEKLY SUMMARY

(Macon, Unionville, Green City, New Cambria)

Receipts: 4,138 Week ago: 1,350 Year ago: 3,738
Compared to two weeks ago, steers and heifers mostly steady to 5.00 lower, spots 10.00 lower, except some 400-500 lbs steers and 650-700 lbs heifers steady to firm. Slaughter cows steady to 2.00 higher.

*Some sale barns on a bi-weekly schedule and may not have a sale each week.

FEEDER STEERS: Medium and Large 1

400-500 lbs.	417.50-502.50
500-600 lbs.	364.00-437.50
600-700 lbs.	337.25-388.00
700-800 lbs.	328.50-350.50
800-900 lbs.	306.00-310.25
900-950 lbs.	303.25-305.00

FEEDER HEIFERS: Medium and Large 1

400-500 lbs.	374.75-440.00
500-600 lbs.	354.25-422.50
600-700 lbs.	326.00-345.00
700-800 lbs.	315.75-320.50

SLAUGHTER BULLS: Yield Grade 1-2 1580-2150 lbs. 185.00-209.50

SLAUGHTER COWS: Breaking and Boning (70-85% lean) 143.00-150.50. Lean (85-90%) 139.00-150.00

BRED COWS: Scarce

COW/CALF PAIRS: Scarce

SOUTHEAST MISSOURI WEEKLY SUMMARY

(Jackson and Farmington)

Receipts: 257 Week ago: 1,103 Year ago: 609
Too few feeders for a market trend.

FEEDER STEERS:

Medium and Large 1

300-400 lbs. 400.00-420.00
400-500 lbs. 385.00-395.00
500-600 lbs. 350.00-380.00
600-650 lbs. 347.00-360.00

FEEDER HEIFERS:

Medium and Large 1

300-400 lbs. 360.00-395.00
400-500 lbs. 352.00-375.00
500-600 lbs. 290.00-340.00
600-650 lbs. 270.00-317.00

SLAUGHTER BULLS: Yield
Grade 1-2 1085-2030 lbs 162.00-
170.00; high dressing 184.00-
218.00.

SLAUGHTER COWS: Breaking
and Boning (75-85% lean) 130.00-
158.00; high dressing 153.00-
165.00. Lean (85-90% lean)
110.00-120.00

BRED COWS: Scarce

COW & CALF PAIRS: Scarce

EAST CENTRAL MISSOURI WEEKLY SUMMARY

(Cuba, Vienna) (w/e 6/21/25)

Receipts: 2,011 Week Ago: 2,011 Year ago: 1,279
Compared to last week, steers under 600 lbs 10.00 lower to 5.00 high-
er, over 600 lbs steady to 4.00 higher. Heifers steady to 5.00 higher.
Slaughter cows steady to 3.00 higher.

FEEDER STEERS:

Medium and Large 1

300-400 lbs. 442.50-480.00
400-500 lbs. 412.00-478.00
500-600 lbs. 370.00-414.00
600-700 lbs. 337.50-368.00
700-750 lbs. 325.00-339.50
14 hd 825 lbs. 298.00

FEEDER HEIFERS:

Medium and Large 1

400-500 lbs. 372.50-427.00
500-600 lbs. 326.00-370.00
600-700 lbs. 304.00-340.00
700-750 lbs. 298.50-301.00
900-1000 lbs. 244.00-254.00

SLAUGHTER BULLS: Yield
Grade 1-2 1290-2225 lbs 174.50
-199.00; high dressing 219.00-
225.00; low dressing ind 180.00

SLAUGHTER COWS: Breaking
and Boning, (70-85% lean) 148.00-
164.00; high dressing 156.00-
168.00. Lean (85-90%) 133.50-
149.00

BRED COWS: Medium and
Large 1-2 2-8 yrs 1040-1340 lbs
1st/2nd stage 2275.00-2700.00;
>8 yrs 1142-1265 lbs 2nd stage
2300.00-2475.00.

BRED HEIFERS: Medium and
Large 1 1009-1158 lbs 2nd stage
3350.00-3850.00 per head

COW & CALF PAIRS: Scarce

NORTHWEST MISSOURI WEEKLY SUMMARY

(Tina) (w/e 6/21/25)

Receipts: 1,506 Week Ago: 754 Year Ago: 835
Compared to last week, steers and heifers higher undertone with 400-
500 lbs steers as much as 15.00 to 20.00 higher. Slaughter cows mostly
steady to firm. Slaughter bulls 5.00 to 8.00 higher.

FEEDER STEERS:

Medium and Large 1

400-500 lbs. 435.00-470.00
500-600 lbs. 403.00-467.50
600-700 lbs. 359.00-390.50
700-800 lbs. 306.00-339.00
179 hd 976 lbs. 285.25

FEEDER HEIFERS:

Medium and Large 1

350-400 lbs. 445.00-450.00
400-500 lbs. 390.00-415.00
500-600 lbs. 353.00-383.00
600-700 lbs. 320.00-335.50
131 hd 726 lbs. 325.00

SLAUGHTER BULLS:

Yield Grade 1-2 1315-2045 lbs
190.00-205.50; high dressing
206.00-225.50; low dressing ind
165.00.

SLAUGHTER COWS: Breaking
and Boning, (70-85% lean) 147.00-
164.00; high dressing 155.00-
170.25. Lean (85-90%) 125.00-
134.00.

BRED COWS: Scarce

COW/CALF PAIRS: Scarce

AFTERNOON NATIONAL SLAUGHTER CATTLE REVIEW

Thus far Friday negotiated cash trade was light to moderate in the Western Cornbelt. Compared to last week, live purchases traded 3.00-6.00 lower from 230.00-233.00, mostly at 232.00. Dressed purchases compared to last week traded 6.00-8.00 lower from 368.00-370.00 on a light test. Trade was light on moderate demand in the Southern Plains and Nebraska, however not enough purchases for an adequate market test. The latest established market in the Texas Panhandle was on Thursday with live purchases from 223.00-225.00, most at 224.00. In Kansas on Thursday live purchases traded from 223.00-225.00, mostly at 225.00. In Nebraska on Thursday live purchases traded at 230.00 with dressed purchases at 368.00 with a few up to 373.50.

Negotiated Cash Sales:

Confirmed:	15,238	Week Ago:	4,484	Year Ago:	8,916
Week to date:	41,497	Week Ago:	50,940	Year Ago:	30,590

<u>Live Basis</u>	<u>Steers</u>	<u>Heifers</u>
Over 80% Choice	225.00-233.50, avg 231.82	224.00-233.00, avg 231.48
65-80% Choice	223.00-230.00, avg 226.98	222.00-224.00, avg 222.86
35-65% Choice	223.00	-
0-35% Choice	-	-
Total All Grades	223.00-233.50, avg 231.18	222.00-233.00, avg 229.42
<u>Dressed Basis</u>		
Over 80% Choice	365.00-373.50, avg 370.33	368.00-373.00, avg 371.77
65-80% Choice	366.00-372.00, avg 368.32	368.00
35-65% Choice	-	-
0-35% Choice	-	-
Total All Grades	365.00-373.50, avg 370.02	368.00-373.00, avg 371.27

<u>All Beef Type Steers/Heifers</u>	<u>Head</u>	<u>Avg Wt</u>	<u>Price Range</u>	<u>Wtd Avg</u>
Live FOB	9,884	1421.3	222.00-235.00	230.75
Live Del	564	1559.6	231.00-234.00	233.54
Dressed Del	4,790	920.4	365.00-375.00	370.01
Dressed FOB	-	-	-	-

WEEKLY COMMODITY FUTURES TRENDS

Compared to last week, Live Cattle 1.55 to 3.48 higher, Lean Hogs Jul 0.48 higher, others 0.48 to 2.18 lower, Feeder Cattle 5.23 to 5.68 higher.

Daily Futures Closes

	Mon.	Tues.	Wed.	Thu.	Fri.
Cattle					
Jun	222.30	221.60	221.60	221.70	224.75
Aug	209.37	209.55	208.97	209.20	213.30
Oct	207.10	206.95	206.35	206.35	209.82
Dec	208.05	207.80	207.10	207.17	210.22
Feb	208.25	207.77	207.27	207.30	209.90
Lean Hogs					
Jul	113.45	112.22	112.82	112.32	113.25
Aug	113.05	110.95	111.22	110.25	110.27
Oct	96.87	95.47	95.72	94.87	94.62
Dec	87.37	86.47	86.55	86.15	85.70
Feb	88.20	87.47	87.50	87.27	87.17
Fdr Cattle					
Aug	302.80	302.25	302.30	303.30	307.90
Sep	302.62	302.45	302.60	303.37	307.90
Oct	300.85	300.65	300.75	301.42	305.72
Nov	298.40	298.20	298.20	298.87	303.02
Jan	293.07	293.07	292.97	293.35	297.40
Milk					
Jun	18.67	18.67	18.67	18.75	18.77
Jul	17.26	16.96	17.00	17.09	17.56
Aug	17.87	17.78	17.66	17.70	18.33

WEEKLY COMMODITY GRAIN FUTURES TRENDS

Compared to last week, Soybeans 0.36 to 0.41 lower, Wheat 0.43 lower, Corn 0.11 to 0.14 lower, KC Wheat 0.42 to 0.47 lower, Soybean Meal 9.60 to 13.00 lower.

Daily Grain Futures Closes

	Mon.	Tues.	Wed.	Thu.	Fri.
Soybeans					
Jul	1058 3/4	1046 3/4	1025 1/4	1022 3/4	1027 3/4
Aug	1062	1050 1/4	1029 1/2	1027 3/4	1033 1/4
Sep	1040 1/4	1030 1/2	1011	1009 1/4	1017 1/4
Nov	1046 3/4	1037	1018 1/2	1016 1/2	1024 3/4
Jan	1061 1/2	1052	1033 3/4	1031 3/4	1039 3/4
Wheat					
Jul	552 3/4	535 3/4	528 1/4	521	524 3/4
Sep	569 1/2	552	544 1/2	536 3/4	540 3/4
Dec	592 3/4	575 3/4	567 1/2	559 3/4	563
Mar	612 1/2	595 3/4	587 1/4	579 1/2	582 1/4
May	623 1/2	606 1/2	597 3/4	590 1/2	592 3/4
Corn					
Jul	419 1/4	416 1/4	410 1/4	409 1/2	417 1/2
Sep	417 1/2	412 1/4	405	404	411 1/2
Dec	433 3/4	429	422 1/2	421	427
Mar	449 1/4	444 1/2	438 1/4	436 1/2	442 1/4
May	459 1/4	454 3/4	448 3/4	447	452
KC Wheat					
Jul	550	534 3/4	524 1/4	518 1/4	516
Sep	565	549 3/4	539 1/4	533 3/4	533 3/4
Dec	588 3/4	574	562 3/4	557	556 3/4
Mar	608 1/4	594 1/4	583 1/4	578	577 1/2
May	618 3/4	605 1/4	594	589 3/4	590
SB Meal					
Jul	282.40	280.50	276.00	270.90	271.10
Aug	286.90	284.80	280.00	275.20	275.60
Sep	290.00	288.00	283.60	279.20	279.70
Oct	291.60	290.00	285.60	281.70	282.70
Dec	296.70	295.30	290.70	287.10	288.50

MISSOURI GRAIN WEEKLY TRENDS

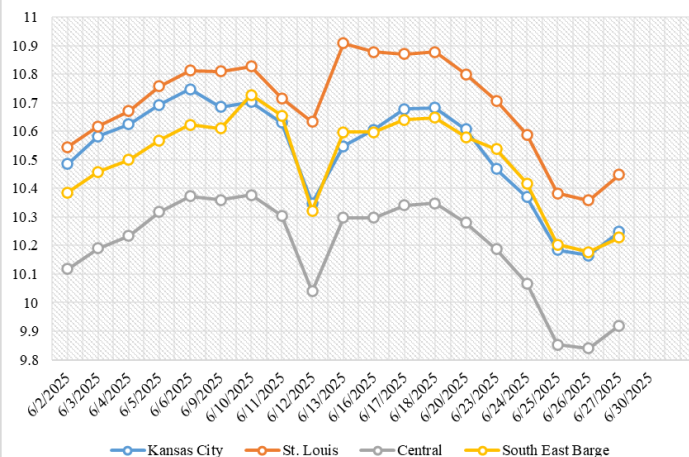
Compared to last week, Soybeans 0.35 to 0.36 lower, Wheat 0.38 to 0.51 lower, Corn 0.09 lower, Sorghum no trend due to lack of bids.

Area	#1 Soybeans	#2 Soft Wheat	#2 Corn	#2 Grain Sorghum
Kansas City				
Friday**	10.51-10.71	5.68	4.42	3.39
Monday	10.37-10.57	5.58	4.34	3.29
Tuesday	10.27-10.47	5.41	4.31	3.26
Wednesday	10.09-10.29	5.33	4.25	3.20
Thursday	10.07-10.27	5.26	4.25	3.20
Friday	10.15-10.35	5.30	4.33	3.28
St. Louis				
Friday**	10.80	5.66-5.75	4.51	—
Monday	10.71	5.49-5.53	4.41	—
Tuesday	10.59	5.32-5.34	4.39	—
Wednesday	10.38	5.18-5.26	4.33	—
Thursday	10.36	5.11-5.19	4.33	—
Friday	10.45	5.17-5.24	4.42	—
Central				
Friday**	10.23-10.33	5.18-5.48	4.04-4.09	—
Monday	10.14-10.24	5.03-5.43	3.94-3.99	—
Tuesday	10.20-10.12	4.86-5.26	3.91-3.96	—
Wednesday	9.80-9.90	4.88-5.18	3.85-3.90	—
Thursday	9.82-9.88	4.81-5.11	3.84-3.90	—
Friday	9.88-9.98	4.86-5.16	3.92-3.98	—
S.E. MO				
Friday**	10.33-10.83	—	4.46	—
Monday	10.34-10.74	—	4.36	—
Tuesday	10.22-10.62	—	4.33	—
Wednesday	10.00-10.40	—	4.27	—
Thursday	9.98-10.38	—	4.27	—
Friday	10.03-10.43	—	4.38	—

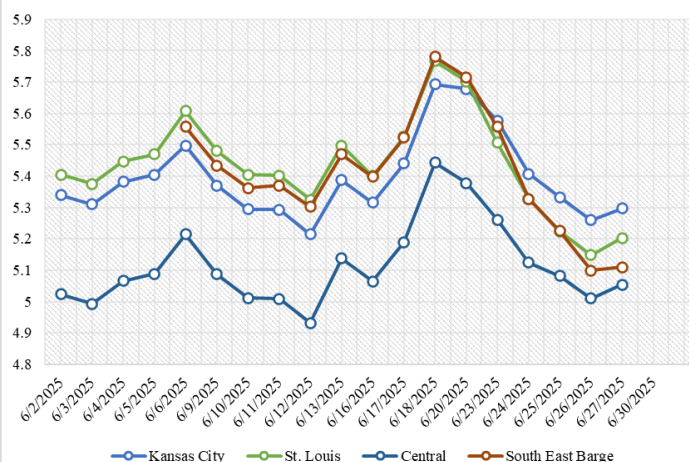
(PRICES PER BUSHEL) *NEW CROP **PREVIOUS WEEK'S PRICES
*Bids calculated using Kansas City, St. Louis, and St. Joseph bids

MONTHLY GRAIN CROP

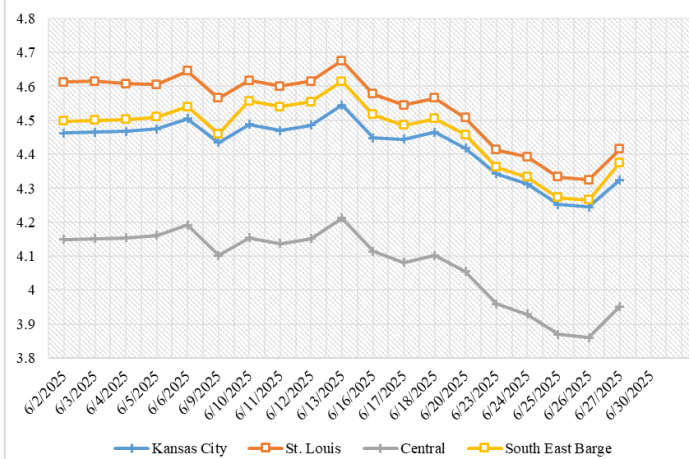
June 2025 Soybean Bids



June 2025 Wheat Bids



June 2025 Corn Bids



*Axis value ranges may be updated to reflect data points.
Only dates in which markets are trading and only current cash bids are represented.

WHOLESALE FEEDSTUFFS PRICES (DOLLARS PER TON-BULK BASIS)

Area	<u>Cottonseed Meal 41%</u>	<u>Soybean Meal 46.5-48%</u>	<u>Corn Gluten Pellets 21%</u>	<u>Wheat Middlings</u>
Kansas City	297.50	248.10	192.00	93.33
St. Louis	292.50	n/a	187.00	95.00

MISSOURI CROP PROGRESS REPORT 6/23/25

There were 4.7 days suitable for fieldwork in the week ending June 22, 2025. Topsoil moisture supply was rated 2 percent very short, 14 percent short, 69 percent adequate, and 15 percent surplus. Subsoil moisture supply was rated 2 percent very short, 15 percent short, 73 percent adequate, and 10 percent surplus. Corn emerged reached 98 percent, compared to the 5-year average of 98 percent. Corn silking reached 5 percent, compared to the 5-year average of 4 percent. Corn condition was rated 1 percent very poor, 5 percent poor, 21 percent fair, 62 percent good, and 11 percent excellent. Soybeans planted reached 89 percent, compared to the 5-year average of 92 percent. Soybeans emerged reached 82 percent, compared to the 5-year average of 81 percent. Soybean condition was rated 1 percent very poor, 4 percent poor, 26 percent fair, 63 percent good, and 6 percent excellent. Winter wheat headed reached 100 percent, compared to the 5-year average of 100 percent. Winter wheat harvested reached 29 percent, compared to the 5-year average of 51 percent. Winter wheat condition was rated 5 percent poor, 29 percent fair, 54 percent good, and 12 percent excellent.

	Week Ending			
	6/22/24	6/15/25	6/22/25	5 yr average
Corn Emerged	99	97	98	98
Corn Silking	11	-	5	4
Soybeans Planted	93	86	89	92
Soybeans Emerged	84	75	82	81
Soybeans Blooming	3	-	3	2
Winter Wheat Harvested	71	13	29	51
Alfalfa hay 1st cutting	91	75	87	91
Alfalfa hay 2nd cutting	11	2	14	12
Other hay cut	71	44	57	66

COLD STORAGE

Total frozen poultry supplies on May 31, 2025 were up 2 percent from the previous month but down 6 percent from a year ago. Total stocks of chicken were up slightly from the previous month and up 1 percent from last year. Total pounds of turkey in freezers were up 8 percent from last month but down 18 percent from May 31, 2024.

Total frozen fruit stocks were down 5 percent from last month and down 4 percent from a year ago. **Total frozen vegetable stocks** were down 8 percent from last month and down 6 percent from a year ago.

Total red meat supplies in freezers were down 2 percent from the previous month and down 4 percent from last year. Total pounds of beef in freezers were down 3 percent from the previous month and down 1 percent from last year. Frozen pork supplies were down 1 percent from the previous month and down 7 percent from last year. Stocks of pork bellies were down 7 percent from last month and down 26 percent from last year.

MISSOURI WEEKLY HAY SUMMARY 6/26/25

Special Note: Beginning 6/19/25, this report will be published biweekly. Any questions or concerns can be emailed to mymarketnews@usda.gov.

This week's drought monitor shows conditions basically unchanged from last week with near twenty percent of the state either abnormally to moderately dry, those numbers however are likely outdated as several counties in the northwest and north central areas of the state received several inches of rain early this week. This was, however, after the report cutoff time so will not be reflected until next week's report. Fields around the state have been very busy the last two-weeks. Wheat harvest and fescue seed harvest have combines back to getting use. Hay harvest is in full swing as well, it has been a slow start for much of the state due to excessive moisture. As of the latest crop progress report hay excluding alfalfa is at 57 percent complete, that compares to 71 percent at this time last year and 66 percent for the five-year average. Alfalfa cuttings are slightly behind but much closer to normal pace at this point. Pasture conditions in the state remain some of the best in the nation, and although the sun and growing degrees have been much appreciated, the extreme heat is likely to result in some decline of conditions if the heat persist too long. Hay prices are steady. The supply of hay is moderate, and demand is light to moderate. The Missouri Department of Agriculture has a hay directory at <https://apps.mda.mo.gov/haydirectory> or visit the University of Missouri Extension feed stuff finder at <https://feedstufffinder.org>

Alfalfa - Supreme 250.00-300.00, small square 10.00-15.00 per bale
Alfalfa - Premium 175.00-225.00
Alfalfa - Good 150.00-175.00, small square 6.00-10.00 per bale
Alfalfa - Fair 125.00-150.00
Mixed Grass—Premium 150.00-200.00
Mixed grass - Good/Premium 100.00-150.00
Mixed grass-Fair/Good 75.00-125.00, small square 3.00-7.00 per bale
Mixed grass - Fair 25.00-50.00 per large round bale
Wheat straw - 4.00-7.00 per small square bale

Please Note: The above volumes (tonnage, acres, and bales) listed are for confirmed trades only, it does not include estimated volume (tonnage) for bids or offers to the trade. List your hay for sale at: [Hay Listing Online Form](#). Explanation of Hay Quality Guidelines: [Hay Quality Designation Guidelines](#). Glossary of Terms: [Livestock, Poultry, & Grain Hay Terms](#)

MISSOURI WEEKLY SHEEP/GOAT AUCTION SUMMARY 6/30/25

Receipts: 478 Week Ago: 2,397 Last Year: 830

SHEEP: Feeder lambs Medium and Large 1-2 hair 20-40 lbs 230.00-290.00, fancy 305.00; 40-50 lbs 200.00-237.00.
Slaughter lambs Choice and Prime 1-3 w/s 95-105 lbs 183.00. Choice and Prime 1-3 hair 50-95 lbs 201.00-245.00. Choice 1-3 hair 50-70 lbs 175.00-203.00; 10 hd 78 lbs 214.00.
Slaughter ewes Utility and Good 1-3 145-155 lbs 87.00-95.00. Good 2-3 hair 110-135 lbs 120.00-122.00.
Slaughter bucks 1-2 hair 105-160 lbs 95.00-150.00.
Replacement ewes Small and Medium 1-2 hair 2-4 yrs 80-95 lbs exp 150.00-197.50; 125-130 lbs exp 142.00-145.00; 4-6 yrs 110-130 lbs exp 135.00-142.00.

GOATS: Feeder kids Selection 1 25-50 lbs 307.00-342.00. Selection 2 30-45 lbs 235.00-287.00. Selection 3 pkg 30 lbs pygmies 110.00; pkg 43 lbs 155.00; pkg 42 lbs pygmies 150.00.
Slaughter kids Selection 1 pkg 53 lbs 322.00. Selection 2 50-75 lbs 247.00-300.00.
Slaughter does Selection 1-2 pkg 45 lbs 140.00; pygmies 127.50-142.00; 90-115 lbs 122.00-147.50.
Slaughter bucks Selection 1-2 40-70 lbs pygmies 140.00-145.00; 80-110 lbs 195.00-260.00.
Wether kids Selection 2 pkg 54 lbs 300.00.

Explanatory Notes: Stage - Represents estimated lambing/kidding period (Open, Exp=exposed, Bred, Fall = Sep-Nov, Win = Dec-Feb, Spr = Mar-May, Sum=Jun-Aug; w/s = woolled and shorn; /hd= per head; /fam=per family
All price CWT unless otherwise noted.

MISSOURI DROUGHT MONITOR

Date	None	D0	D1	D2	D3	D4
6/24/25	83.86	13.16	2.98	0	0	0
6/17/25	80.27	14.48	4.25	0	0	0
6/25/24	74.63	20.39	4.98	0	0	0

Reflects percentage of Missouri impacted by drought. D0 Abnormally Dry; D1 Moderate Drought; D2 Severe Drought; D3 Extreme Drought; D4 Exceptional Drought

NATIONAL DIRECT DELIVERED FEEDER PIG REPORT

6/27/25 Receipts: 150,912 Week ago: 127,352 Year Ago: 130,259
Early weaned pigs steady to 1.00 higher and feeder pigs mostly 2.00 higher.
Cash 83,490 head 44.00-64.00, weighted average 55.48
Formula 44,772 head 46.42-64.65, weighted average 54.17
Feeder pigs 40 pounds basis: Cash 22,650 head 84.00-92.00, weighted average 90.05

NATIONAL DAILY DIRECT PRIOR DAY HOG REPORTS 6/27/25

BARROWS AND GILTS (Carcass Basis): 1,445 head
Base Carcass Price 102.00-110.00, weighted average 107.52

SOWS (Live Basis): 6,925 head
300-500 lbs. 29.00-92.00
Over 500 lbs. 68.80-95.41

MISSOURI WEEKLY DIRECT SLAUGHTER CATTLE REPORT 6/27/25

Weekly Receipts: 240 Week ago: 280 Year ago: 320
Trading as of Friday morning, flat dressed prices 6.00 to 11.00 lower and grid dressed sales inactive.

LIVE STEERS & HEIFERS:
No sales reported
DRESSED STEERS & HEIFERS:
5 loads flat Thu 365.00; 1 load Fri morning 370.00

GRADE AND EIGHT (Grid): No sales reported

Click here for the current [National Crop Progress](#)
Click here for the current [Missouri Crop Progress](#)
The current hay directory can be found at: [Hay Directory](#).