

Weekly Market Summary

Published by:
Missouri Department of Agriculture
Ag Business Development Division
Market News Program



Chris Chinn, Director
Jill Wood, Division Director
Tony Hancock, Editor
<http://www.ams.usda.gov/marketnews.htm>
<http://www.ams.usda.gov/marketnews.htm>

Michael Kehoe, Governor

Volume XLV, Number 27 ♦ P.O. Box 630, Jefferson City, MO 65102 ♦ (573) 751-4211 ♦ Mon, July 7, 2025

MISSOURI WEEKLY FEEDER CATTLE WEIGHTED AVERAGE REPORT

Feeder Cattle Receipts: 16,055 Week ago: 19,226 Year ago: 15,958
Steers and Heifers Medium and Large 1—Weighted average weights and prices

STEERS: Medium and Large 1

310 lbs.	538.87	525 lbs.	424.67	726 lbs.	340.84	915 lbs.	310.06
376 lbs.	470.67	573 lbs.	393.42	789 lbs.	323.32	954 lbs.	298.17
428 lbs.	452.66	624 lbs.	368.68	826 lbs.	315.93	1061 lbs.	277.00
474 lbs.	419.30	671 lbs.	355.38	875 lbs.	308.33		

HEIFERS: Medium and Large 1

333 lbs.	437.98	519 lbs.	370.50	724 lbs.	331.36
370 lbs.	443.10	574 lbs.	348.98	769 lbs.	314.31
423 lbs.	411.88	623 lbs.	344.41	823 lbs.	296.65
482 lbs.	378.96	678 lbs.	344.10	866 lbs.	288.60

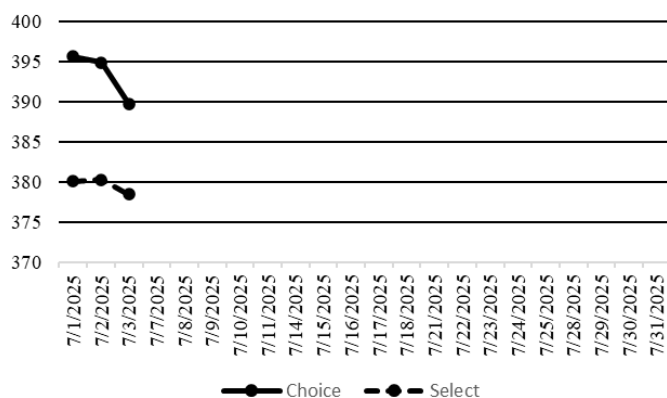
MISSOURI STEER (HEIFER) STOCKER FORMULA 7/7/2025

Monday's Missouri Stocker formula consists of **3,260 (2,701)** head with a weighted average weight of **547.93 (542.79)** lbs. and a price value of **389.96 (352.85)**, 15.65 higher (11.92 higher) than a week ago. This a rolling seven day calculated weighted value which combines all Feeder Steers reported by MDA/USDA Market News Service weighing from 400-649 lbs. in the Medium and Large 1 and Medium and Large 1-2 frame and muscle classifications, including all comment cattle except Brahman X. Heifer values are in parentheses.

NATIONAL BOXED BEEF CUTOUT VALUES

DATE	CHOICE	SELECT	TOTAL LOADS
6/30	395.56	384.10	95
7/1	395.60	380.06	108
7/2	394.86	380.31	112
7/3	389.75	378.44	103
7/4	-	-	-
4 Day Simple Average	393.94	380.73	

Boxed Beef Cuts July 2025



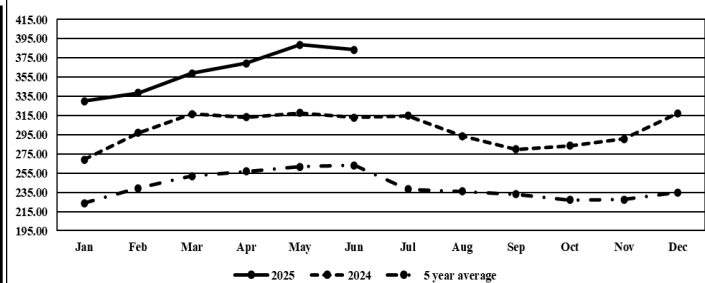
*Axis value ranges may be updated to reflect data points.

WEEKLY LIVESTOCK SLAUGHTER 6/3/25

	CATTLE	HOGS	SHEEP
Week to Date:	475,000	1,821,000	31,000
Last Week:	452,000	1,887,000	32,000
Last Year:	362,036	1,427,078	27,805

The Weekly Market Summary, as well as historical summaries, are available on our website <https://agmarketnews.mo.gov/summaries>
Market News Hotline: 1-573-522-9244
Check out the latest updates on our YouTube Channel: [MDA Market News](https://www.youtube.com/channel/UCM4M4M4M4M4M4M4M4M4M4M4)

Missouri Stocker Formula - Steers



*Graph is updated the first Monday of each month. Axis value ranges may be updated to reflect data points.

MISSOURI WEEKLY CATTLE AUCTION SUMMARY

Total Receipts: 17,504 Week Ago: 21,146 Year Ago: 17,650

Compared to last week, feeder steers and heifers sold with sharply higher undertones. Auctions were limited due to the holiday shortened week with many barns taking the week off, although some special holiday sales were held. Taking that into factor any comparisons made this week really wouldn't be apples to apples. Joplin Regional Stockyards also held their annual Big Bang Video auction this week which totaled near 60K head of yearlings that will deliver now through the end of the year. Green City Livestock Auction held their annual BBQ sale over two days selling loads of yearlings on Monday and part loads and smaller lots on Wednesday. A big consignment of near 500 head at Callaway Livestock Center along with several other pot loads posted some impressive prices on mid-weight calves and yearlings this week. Pasture conditions continue to be outstanding across the state, and although it has been a struggle hay is getting made. Stick out sales this week included 100 head of 532 lb. steers at Callaway Livestock Center which sold for 440.00, 87 head of 608 lb. steers sold for 400.00 and 78 head of 653 lb. steers sold for 379.50. Green City Livestock Auction sold several loads of reputation yearlings with quality and condition that made for some big checks. A load of 784 lb. steers sold for 333.25, a load of 824 lb. steers sold for 328.50 and another load of 860 lb. steers sold for 322.00. Tina Livestock Market sold 131 head of 918 lb. steers for 313.50. A load of 708 lb. heifers at Green City Livestock Auction sold for 351.50. Boxed beef cutout values were lower for the week, choice closed on Thursday at 389.75, down 6.76 and Select closed at 378.44, down 4.51 compared to last Friday. Negotiated feedlot sales as of the 2:00 cutoff time on Thursday afternoons report totaled just over 45K for the week. Prices were unevenly steady this week. Live trade in the south 222.00-224.00, in the north live sales from 230.00-233.00 and dressed sales were mostly at 368.00. The Missouri Stocker formula consists of 3260 head with a weighted average weight of 557.58 lbs. and a price value of 389.96, 15.65 higher than last week. The steer/heifer spread is 37.11 per cwt.

SOUTHWEST MISSOURI WEEKLY SUMMARY

(Joplin and Springfield)

Receipts: 6,182 Week ago: 10,938 Year Ago: 7,130
Compared to last week, steers steady to firm, spots up to 20.00 higher, most gain on 4 and 5 weight calves. Heifers uneven from 7.00 lower to 8.00 higher. Slaughter cows steady to 4.00 higher. Slaughter bulls steady.

FEEDER STEERS: Medium and Large 1

300-400 lbs.	460.00-555.00
400-500 lbs.	400.00-460.00
500-600 lbs.	365.00-430.00
600-700 lbs.	331.00-370.00
700-800 lbs.	312.00-335.00
800-900 lbs.	295.00-318.00
900-1000 lbs.	280.00-298.50
17 hd 1061 lbs.	277.00

FEEDER HEIFERS: Medium and Large 1

300-400 lbs.	425.00-455.00
400-500 lbs.	360.00-410.00
500-600 lbs.	332.00-370.00
600-700 lbs.	308.00-339.00
700-800 lbs.	289.00-316.00

FEEDER HOLSTEIN STEERS Large 3

Scarce

Scarce

SLAUGHTER COWS: Breaking and Boning (70-85% lean) 147.50-162.50; high dressing 160.00-179.00; low dressing 132.50-144.00. Lean (85-90%) 135.00-155.00.

SLAUGHTER BULLS: Yield Grade 1-2 1275-2110 lbs. 182.50-200.00; high dressing 202.50-236.00

BRED COWS: Medium and Large 1 2-8 yrs 1060-1160 lbs 2nd/3rd stage 2800.00-3000.00, 1st stage 2700.00 per head. Medium and Large 1-2 2-8 yrs 1035-1172 lbs 2nd/3rd stage 2100.00-2600.00; >8 yrs 1135-1170 lbs 2nd/3rd stage 2400.00-2500.00 per head

COW & CALF PAIRS: Medium and Large 1-2 2-8 yrs 1040 lbs with 150-300 lb calves 3050.00; >8 yrs 1040 lbs with 150-300 lb calves 3350.00 per pair

SOUTH CENTRAL MISSOURI WEEKLY SUMMARY

(West Plains, Phillipsburg)

Receipts: 2,135 Week ago: 1,795 Year Ago: 2,700
Compared to last week, steer calves 6.00 to 12.00 higher, heifer calves uneven from 4.00 lower to 4.00 higher. Yearlings steady to 4.00 higher. Slaughter cows and bulls steady.

FEEDER STEERS: Medium and Large 1

350-400 lbs.	430.00-450.00
400-500 lbs.	411.00-460.00
500-600 lbs.	361.00-397.50
600-650 lbs.	335.00-337.50
700-800 lbs.	316.00-321.00
800-900 lbs.	297.50-311.50

FEEDER HEIFERS: Medium and Large 1

300-350 lbs.	410.00-425.00
450-500 lbs.	347.50-350.00
500-600 lbs.	322.50-341.00
600-650 lbs.	309.00-316.00
700-800 lbs.	295.00-311.75

FEEDER HOLSTEIN STEERS: Large 3

Scarce

Scarce

SLAUGHTER COWS: Breaking and Boning (70-85% lean) 153.00-167.00, high dressing 165.00-175.00; low dressing 133.00-153.00. Lean (85-90%) 135.00-151.00.

SLAUGHTER BULLS: Yield Grade 1-2 1405-2330 lbs. 189.00-200.00; high dressing 204.00-212.00; low dressing 160.00-182.00.

BRED COWS: Medium and Large 1-2 2-8 yrs 1165-1490 lbs 2nd/3rd stage 2400.00-3250.00, 1st stage 2200.00-2500.00 per head

COW & CALF PAIRS: Medium 1-2 2-8 yrs 1025-1075 lbs with 150-300 lb calves 2900.00-3900.00 per pair

WEST CENTRAL MISSOURI WEEKLY SUMMARY

(Kingsville, Windsor, Butler)

Receipts: 1,125 Week ago: 1,352 Year ago: 1,603
Compared to last week, steers steady to 12.00 higher and heifers steady to 5.00 higher, spots 20.00 higher. Slaughter cows and bulls mostly 3.00 to 8.00 higher.

FEEDER STEERS: Medium and Large 1

Pkg 384 lbs.	465.00
400-500 lbs.	425.00-475.00
500-600 lbs.	383.00-439.00
600-700 lbs.	348.00-382.00
700-750 lbs.	335.00-347.50
Pkg 813 lbs.	322.00

FEEDER HEIFERS: Medium and Large 1

350-400 lbs.	437.00-460.00
400-500 lbs.	390.00-449.00
500-600 lbs.	345.00-416.00
600-700 lbs.	322.00-353.50

SLAUGHTER BULLS: Yield Grade 1-2 1345-2280 lbs. 183.00-209.00; high dressing 215.00-223.00

SLAUGHTER COWS: Breaking and Boning (70-85% lean) 151.00-169.00, high dressing 164.50-181.00. Lean (85-90%) 137.00-157.00

BRED COWS: Medium and Large 1-2 2-8 yrs 1378-1495 lbs 2nd/3rd stage 2400.00-2850.00 per head

COW & CALF PAIRS: Scarce

NORTHEAST MISSOURI WEEKLY SUMMARY

(Bowling Green, Kingdom City, Palmyra)

Receipts: 2,531 Week ago: 2,666 Year ago: 0
Compared to last week, steers under 700 lbs higher undertone, 700-750 lbs 10.00-14.00 higher, over 800 lbs firm to 7.00 higher. Heifers sharply higher undertone on limited comparisons. Slaughter cows steady.

FEEDER STEERS: Medium and Large 1

400-500 lbs.	425.00-471.00
500-600 lbs.	386.00-443.00
600-700 lbs.	349.00-385.00
700-800 lbs.	320.25-349.00
800-900 lbs.	303.50-319.75

FEEDER HEIFERS: Medium and Large 1

300-400 lbs.	435.00-437.50
400-500 lbs.	372.00-413.00
500-600 lbs.	339.50-374.00
600-700 lbs.	326.00-341.00
700-750 lbs.	319.50

SLAUGHTER BULLS: Yield Grade 1-2 1535-1895 lbs. 190.00-200.00; high dressing 203.00-212.00.

SLAUGHTER COWS: Breaking and Boning, (70-85% lean) 151.00-164.00; high dressing 165.00-180.00. Lean (85-90%) 140.00-154.00.

SLAUGHTER STEERS: Choice 2 -3 231.00-233.50. Select and Choice 1-3 228.50.

BRED COWS: Scarce

SLAUGHTER HEIFERS: Scarce

COW CALF PAIRS: Scarce

NORTH CENTRAL MISSOURI WEEKLY SUMMARY

(Macon, Unionville, Green City, New Cambria)

Receipts: 4,304 Week ago: 4,138 Year ago: 4,401
Compared to four weeks ago, steers and heifers traded sharply higher. Slaughter cows steady to firm.

*Some sale barns on a bi-weekly schedule and may not have a sale each week.

FEEDER STEERS: Medium and Large 1

400-500 lbs.	419.00-462.50
500-600 lbs.	402.00-436.00
600-700 lbs.	352.50-425.00
700-800 lbs.	323.50-369.00
800-900 lbs.	317.50-328.25
900-950 lbs.	313.75-315.25

FEEDER HEIFERS: Medium and Large 1

400-500 lbs.	402.50-453.00
500-600 lbs.	363.00-425.00
600-700 lbs.	334.50-373.00
700-800 lbs.	315.00-351.50
800-900 lbs.	288.60-304.25

SLAUGHTER BULLS: Yield Grade 1-2 1800-1965 lbs. 197.00-204.50

SLAUGHTER COWS: Breaking and Boning (70-85% lean) 152.00-164.50; high dressing 167.50-170.00; low dressing 151.00-153.00. Lean (85-90%) 150.00-154.00.

BRED COWS: Scarce

COW/CALF PAIRS: Scarce

SOUTHEAST MISSOURI WEEKLY SUMMARY

(Jackson and Farmington) (w/e 6/28/25)

Receipts: 257 Week ago: 1,103 Year ago: 609

Too few feeders for a market trend.

FEEDER STEERS:

Medium and Large 1

300-400 lbs. 400.00-420.00
400-500 lbs. 385.00-395.00
500-600 lbs. 350.00-380.00
600-650 lbs. 347.00-360.00

FEEDER HEIFERS:

Medium and Large 1

300-400 lbs. 360.00-395.00
400-500 lbs. 352.00-375.00
500-600 lbs. 290.00-340.00
600-650 lbs. 270.00-317.00

SLAUGHTER BULLS: Yield
Grade 1-2 1085-2030 lbs 162.00-
170.00; high dressing 184.00-
218.00.

SLAUGHTER COWS: Breaking
and Boning (75-85% lean) 130.00-
158.00; high dressing 153.00-
165.00. Lean (85-90% lean)
110.00-120.00

BRED COWS: Scarce

COW & CALF PAIRS: Scarce

EAST CENTRAL MISSOURI WEEKLY SUMMARY

(Cuba, Vienna) (w/e 6/21/25)

Receipts: 2,011 Week Ago: 2,011 Year ago: 1,279

Compared to last week, steers under 600 lbs 10.00 lower to 5.00 higher, over 600 lbs steady to 4.00 higher. Heifers steady to 5.00 higher. Slaughter cows steady to 3.00 higher.

FEEDER STEERS:

Medium and Large 1

300-400 lbs. 442.50-480.00
400-500 lbs. 412.00-478.00
500-600 lbs. 370.00-414.00
600-700 lbs. 337.50-368.00
700-750 lbs. 325.00-339.50
14 hd 825 lbs. 298.00

FEEDER HEIFERS:

Medium and Large 1

400-500 lbs. 372.50-427.00
500-600 lbs. 326.00-370.00
600-700 lbs. 304.00-340.00
700-750 lbs. 298.50-301.00
900-1000 lbs. 244.00-254.00

SLAUGHTER BULLS: Yield
Grade 1-2 1290-2225 lbs 174.50
-199.00; high dressing 219.00-
225.00; low dressing ind 180.00

SLAUGHTER COWS: Breaking
and Boning, (70-85% lean) 148.00-
164.00; high dressing 156.00-
168.00. Lean (85-90%) 133.50-
149.00

BRED COWS: Medium and
Large 1-2 2-8 yrs 1040-1340 lbs
1st/2nd stage 2275.00-2700.00;
>8 yrs 1142-1265 lbs 2nd stage
2300.00-2475.00.

BRED HEIFERS: Medium and
Large 1 1009-1158 lbs 2nd stage
3350.00-3850.00 per head

COW & CALF PAIRS: Scarce

NORTHWEST MISSOURI WEEKLY SUMMARY

(Tina)

Receipts: 1,227 2 Weeks Ago: 1,506 Year Ago: 1,816

Compared to two weeks ago, steers and heifers traded with a firm undertone. Slaughter cows and bulls steady to 5.00 higher.

FEEDER STEERS:

Medium and Large 1

Pkg 474 lbs. 427.50
500-600 lbs. 401.00-440.00
600-700 lbs. 353.00-385.00
Pkg 796 lbs. 329.50
64 hd 850 lbs. 325.50
131 hd 918 lbs. 313.50

FEEDER HEIFERS:

Medium and Large 1

400-500 lbs. 381.00-402.00
500-600 lbs. 351.00-364.00
600-650 lbs. 330.00-336.50
25 hd 760 lbs. 310.00

SLAUGHTER BULLS:
Yield Grade 1-2 1385-2025 lbs
181.00-199.50; high dressing
204.50-210.00

SLAUGHTER COWS: Breaking
and Boning, (70-85% lean) 152.00-
166.00; high dressing 155.00-
170.50. Lean (85-90%) 137.00-
143.00.

BRED COWS: Scarce

COW/CALF PAIRS: Scarce

AFTERNOON NATIONAL SLAUGHTER CATTLE REVIEW

So far for Thursday, negotiated cash trade has been limited on moderate demand in all feeding regions, with a few purchases in Kansas at 225.00, but not enough for a market test. The last established market in Kansas was Wednesday at 224.00. The last established market in the Texas Pan-handle was Wednesday at 224.00. The last established market in Nebraska was Wednesday with live purchases 230.00-232.00 and dressed purchases at 368.00. The last established live market in the Western Cornbelt was Wednesday from 230.00-233.00. The last established dressed market in the Western Cornbelt was last week from 368.00-370.00.

Negotiated Cash Sales:

Confirmed:	8,679	Week Ago:	4,732	Year Ago:	12,132
Week to date:	45,093	Week Ago:	7,695	Year Ago:	4,294

<u>Live Basis</u>	<u>Steers</u>	<u>Heifers</u>
Over 80% Choice	218.00-235.00, avg 230.29	224.00-232.00, avg 226.95
65-80% Choice	225.00	225.00
35-65% Choice	225.00	225.00
0-35% Choice		-
Total All Grades	218.00-235.00, avg 229.46	224.00-232.00, avg 225.59
<u>Dressed Basis</u>		
Over 80% Choice	368.00-370.00, avg 368.13	368.00
65-80% Choice	-	-
35-65% Choice	-	-
0-35% Choice	-	-
Total All Grades	368.00-370.00, avg 368.13	368.00

<u>All Beef Type Steers/Heifers</u>	<u>Head</u>	<u>Avg Wt</u>	<u>Price Range</u>	<u>Wtd Avg</u>
Live FOB	5,413	1427.8	218.00-236.00	229.65
Live Del	1,214	1534.8	230.00-237.00	230.51
Dressed Del	1,699	953.7	368.00-375.00	368.8
Dressed FOB	353	895.2	364.00-370.00	367.84

WEEKLY COMMODITY FUTURES TRENDS

Compared to last week, Live Cattle 0.75 to 1.83 higher, Lean Hogs 1.10 to 5.28 lower, Feeder Cattle 0.60 to 1.60 higher.

Daily Futures Closes

	Mon.	Tues.	Wed.	Thu.	Fri.
Cattle Jun Aug Oct Dec Feb	225.87 213.87 210.17 210.65 210.75	— 210.75 207.80 208.35 208.60	— 212.45 209.70 210.12 210.30	— 214.05 210.90 211.25 211.40	Holiday
Lean Hogs Jul Aug Oct Dec Feb	110.10 107.50 92.40 83.77 85.57	109.00 106.95 92.57 84.07 85.90	109.65 107.90 93.00 84.27 85.85	107.97 106.10 92.10 84.20 86.07	Holiday
Fdr Cattle Aug Sep Oct Nov Jan	310.67 310.62 308.52 305.85 300.02	306.02 305.65 303.42 300.82 295.02	309.02 308.87 306.42 303.47 297.30	309.50 309.37 307.15 304.30 298.00	Holiday
Milk Jun Jul Aug	18.75 17.77 18.70	— 17.55 18.43	— 17.32 18.24	— 17.37 18.40	Holiday

WEEKLY COMMODITY GRAIN FUTURES TRENDS

Compared to last week, Soybeans 0.22 to 0.29 higher, Wheat 0.14 to 0.23 higher, Corn 0.09 to 0.14 higher, KC Wheat 0.02 to 0.06 higher, Soybean Meal 1.80 to 3.70 higher.

Daily Grain Futures Closes

	Mon.	Tues.	Wed.	Thu.	Fri.
Soybeans					
Jul	1024 1/4	1024 3/4	1050 1/2	1056 1/4	Holiday
Aug	1029 3/4	1029 3/4	1053 1/2	1055 1/2	
Sep	1018 1/4	1018 1/2	1039 3/4	1041 1/4	
Nov	1027	1027 1/4	1048	1049 1/4	
Jan	1042 1/4	1042 3/4	1062 3/4	1064 1/2	
Wheat					
Jul	528 3/4	537 1/4	556	547 3/4	Holiday
Sep	538 1/4	549	564	556 3/4	
Dec	560	569 1/4	584	578 1/4	
Mar	579 1/4	586 3/4	601 1/4	596 3/4	
May	589 3/4	596 3/4	611 3/4	608 1/4	
Corn					
Jul	420 1/2	420	429 1/4	431 1/2	Holiday
Sep	409 1/4	406	418	420 1/4	
Dec	425 1/2	422	433 1/2	437	
Mar	441	438	448 3/4	452 3/4	
May	451	448 3/4	459 1/4	463	
KC Wheat					
Jul	506	510 3/4	522 3/4	518	Holiday
Sep	526 3/4	531 1/4	542 1/4	536	
Dec	550	554 3/4	566	560 3/4	
Mar	571 1/2	575 3/4	587 1/4	582 3/4	
May	584 1/2	588 1/2	600 1/2	596 1/4	
SB Meal					
Jul	271.30	269.20	272.40	273.80	Holiday
Aug	275.80	273.70	276.80	277.40	
Sep	279.90	277.90	280.80	281.70	
Oct	283.10	281.10	284.30	285.40	
Dec	289.30	287.60	290.80	292.20	

MISSOURI GRAIN WEEKLY TRENDS

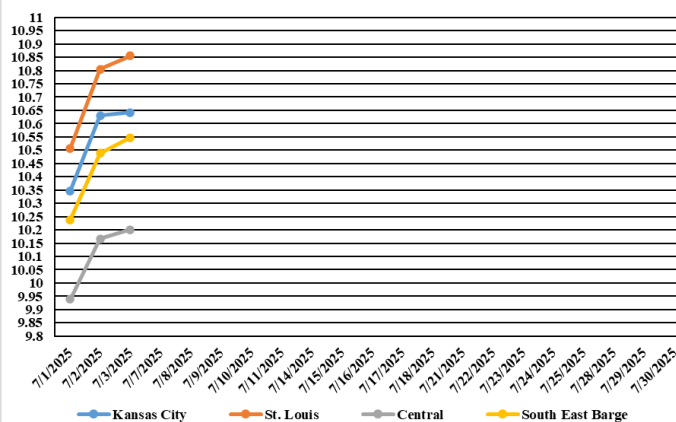
Compared to last week, Soybeans 0.39 to 0.41 higher, Wheat 0.16 to 0.27 higher, Corn 0.07 to 0.18 higher, Sorghum no trend due to lack of bids.

Area	#1 Soybeans	#2 Soft Wheat	#2 Corn	#2 Grain Sorghum
Kansas City				
Friday**	10.15-10.35	5.30	4.33	3.28
Monday	10.17-10.37	5.34	4.36	3.31
Tuesday	10.17-10.52	5.49	4.35	3.16
Wednesday	10.53-10.73	5.64	4.38	3.28
Thursday	10.54-10.74	5.57	4.40	3.30
Friday	Holiday			
St. Louis				
Friday**	10.45	5.17-5.24	4.42	—
Monday	10.41	5.14-5.21	4.47	—
Tuesday	10.51	5.25-5.32	4.44	—
Wednesday	10.81	5.40-5.47	4.56	—
Thursday	10.86	5.33-5.40	4.60	—
Friday	Holiday			—
Central				
Friday**	9.88-9.98	4.86-5.16	3.92-3.98	—
Monday	9.92-9.95	4.83-5.13	3.89-3.94	—
Tuesday	9.92-9.95	4.94-5.34	3.86-3.91	—
Wednesday	10.13-10.19	5.09-5.49	3.98-4.03	—
Thursday	10.14-10.26	5.02-5.42	4.00-4.05	—
Friday	Holiday			—
S.E. MO				
Friday**	10.03-10.43	—	4.38	—
Monday	9.99-10.39	—	4.41	—
Tuesday	10.02-10.45	—	4.17-4.40	—
Wednesday	10.28-10.71	—	4.29-4.49	—
Thursday	10.33-10.81	—	4.31-4.50	—
Friday	Holiday	—	—	—

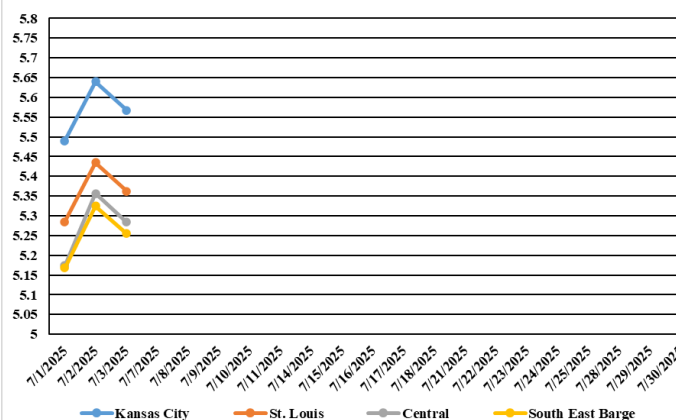
(PRICES PER BUSHEL) *NEW CROP **PREVIOUS WEEK'S PRICES
*Bids calculated using Kansas City, St. Louis, and St. Joseph bids

MONTHLY GRAIN CROP

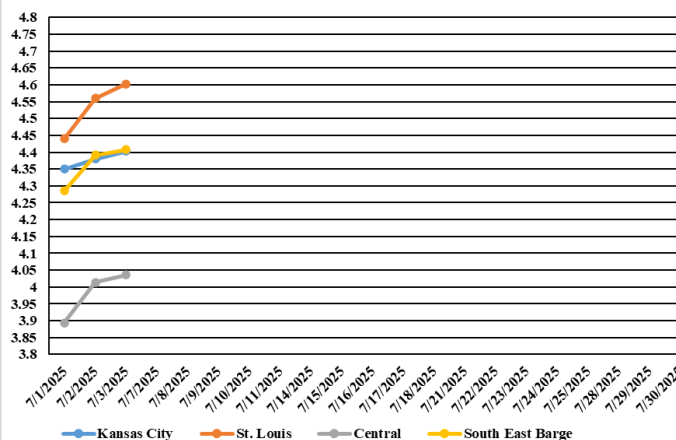
July 2025 Soybean Bids



July 2025 Wheat Bids



July 2025 Corn Bids



*Axis value ranges may be updated to reflect data points.
Only dates in which markets are trading and only current cash bids are represented.

WHOLESALE FEEDSTUFFS PRICES 6/27/25 (DOLLARS PER TON-BULK BASIS)

Area	Cottonseed Meal 41%	Soybean Meal 46.5-48%	Corn Gluten Pellets 21%	Wheat Middlings
Kansas City	297.50	248.10	192.00	93.33
St. Louis	292.50	n/a	187.00	95.00

MISSOURI CROP PROGRESS REPORT 6/30/25

There were 4.3 days suitable for fieldwork in the week ending June 29, 2025. Topsoil moisture supply was rated 1 percent very short, 11 percent short, 70 percent adequate, and 18 percent surplus. Subsoil moisture supply was rated 1 percent very short, 11 percent short, 75 percent adequate, and 13 percent surplus. Corn silking reached 19 percent, compared to the 5-year average of 13 percent. Corn condition was rated 1 percent very poor, 5 percent poor, 20 percent fair, 63 percent good, and 11 percent excellent. Soybeans emerged reached 87 percent, compared to the 5-year average of 89 percent. Soybeans blooming reached 14 percent, compared to the five-year average 10 percent. Soybean condition was rated 1 percent very poor, 3 percent poor, 24 percent fair, 63 percent good, and 6 percent excellent. Winter wheat harvested reached 65 percent, compared to the 5-year average of 74 percent. Winter wheat condition was rated 4 percent poor, 28 percent fair, 53 percent good, and 15 percent excellent.

	Week Ending			
	6/29/24	6/22/25	6/29/25	5 yr average
Corn Silking	32	5	19	13
Soybeans Emerged	90	82	87	89
Soybeans Blooming	12	3	14	10
Soybeans Setting Pods	-	-	1	-
Winter Wheat Harvested	90	29	65	74
Alfalfa hay 1st cutting	95	87	92	96
Alfalfa hay 2nd cutting	28	14	27	29
Other hay cut	80	57	66	76

ACREAGE

Corn planted area for all purposes in 2025 is estimated at 95.2 million acres, up 5 percent or 4.61 million acres from last year. This represents the third highest planted acreage in the United States since 1944. Compared with last year, planted acreage is expected to be up or unchanged in 41 of the 48 estimating States. Area harvested for grain, at 86.8 million acres, is up 5 percent from last year.

Soybean planted area for 2025 is estimated at 83.4 million acres, down 4 percent from last year. Compared with last year, planted acreage is down or unchanged in 25 of the 29 estimating States.

All wheat planted area for 2025 is estimated at 45.5 million acres, down 1 percent from 2024. The 2025 winter wheat planted area, at 33.3 million acres, is down less than 1 percent from last year but up slightly from the previous estimate. Of this total, about 23.6 million acres are Hard Red Winter, 6.10 million acres are Soft Red Winter, and 3.67 million acres are White Winter. Area planted to other spring wheat for 2025 is estimated at 10.0 million acres, down 5 percent from the 2024 estimate. Of this total, about 9.44 million acres are Hard Red Spring wheat. Durum planted area for 2025 is estimated at 2.11 million acres, up 2 percent from the previous year.

MISSOURI WEEKLY HAY SUMMARY 6/26/25

Special Note: Beginning 6/19/25, this report will be published biweekly. Any questions or concerns can be emailed to mymarketnews@usda.gov.

This week's drought monitor shows conditions basically unchanged from last week with near twenty percent of the state either abnormally to moderately dry, those numbers however are likely outdated as several counties in the northwest and north central areas of the state received several inches of rain early this week. This was, however, after the report cutoff time so will not be reflected until next week's report. Fields around the state have been very busy the last two-weeks. Wheat harvest and fescue seed harvest have combines back to getting use. Hay harvest is in full swing as well, it has been a slow start for much of the state due to excessive moisture. As of the latest crop progress report hay excluding alfalfa is at 57 percent complete, that compares to 71 percent at this time last year and 66 percent for the five-year average. Alfalfa cuttings are slightly behind but much closer to normal pace at this point. Pasture conditions in the state remain some of the best in the nation, and although the sun and growing degrees have been much appreciated, the extreme heat is likely to result in some decline of conditions if the heat persist too long. Hay prices are steady. The supply of hay is moderate, and demand is light to moderate. The Missouri Department of Agriculture has a hay directory at <https://apps.mda.mo.gov/haydirectory> or visit the University of Missouri Extension feed stuff finder at <https://feedstufffinder.org>

Alfalfa - Supreme 250.00-300.00, small square 10.00-15.00 per bale
Alfalfa - Premium 175.00-225.00
Alfalfa - Good 150.00-175.00, small square 6.00-10.00 per bale
Alfalfa - Fair 125.00-150.00
Mixed Grass—Premium 150.00-200.00
Mixed grass - Good/Premium 100.00-150.00
Mixed grass-Fair/Good 75.00-125.00, small square 3.00-7.00 per bale
Mixed grass - Fair 25.00-50.00 per large round bale
Wheat straw - 4.00-7.00 per small square bale

Please Note: The above volumes (tonnage, acres, and bales) listed are for confirmed trades only, it does not include estimated volume (tonnage) for bids or offers to the trade. List your hay for sale at: [Hay Listing Online Form](#). Explanation of Hay Quality Guidelines: [Hay Quality Designation Guidelines](#). Glossary of Terms: [Livestock, Poultry, & Grain Hay Terms](#)

MISSOURI WEEKLY SHEEP/GOAT AUCTION SUMMARY 7/5/25

Receipts: 776 Week Ago: 478 Last Year: 0
SHEEP: Feeder lambs Medium and Large 1-2 hair pkg 25 lbs 187.50, thin 152.50; 30-50 lbs 187.50-247.50.

Slaughter lambs Choice and Prime 1-3 w/s 55-85 lbs 255.00-270.00. Choice and Prime 1-3 hair 50-95 lbs 230.00-275.00. Choice 1-3 hair 50-70 lbs 227.50-250.00. Good 1-2 hair 55-85 lbs 185.00-205.00. Slaughter ewes Utility and Good 1-3 pkg 138 lbs 115.00. Cull and Utility 1-2 95-200 lbs 62.50-92.50. Good 2-3 hair 80-130 lbs 120.00-157.50. Utility and Good 1-3 hair 50-125 lbs 100.00-125.00. Cull and Utility 1-2 hair pkg 75 lbs 72.50.

Slaughter bucks 1-2 210-225 lbs 82.50-125.00. Bucks 1-2 hair 120-210 lbs 107.50-160.00.

Replacement ewes Small and Medium 1-2 hair 1-4 yrs exp 75-85 lbs 162.50-180.00.

GOATS: Feeder kids Selection 1 25-50 lbs 305.00-365.00. Selection 2 25-45 lbs 227.50-315.00, pygmies 232.50-250.00. Selection 3 30-40 lbs 165.00-202.50, pygmies 122.50-180.00.

Slaughter kids Selection 1 50-60 lbs 325.00-410.00, fancy 430.00-435.00; pkg 70 lbs 415.00; pkg 85 lbs 340.00. Selection 2 50-65 lbs 232.50-277.50; 80 lbs 270.00-312.50. Selection 3 50-75 lbs pygmies 117.50-205.00.

Slaughter does Selection 1-2 55-140 lbs 115.00-215.00, thin 72.50, pygmies 170.00.

Slaughter bucks Selection 1-2 60-70 lbs pygmies 152.50-230.00; 115-145 lbs 185.00-200.00.

Wethers Selection 1-2 80-120 lbs 327.50-370.00.

Replacement does Selection 1-2 1-2 yrs 65-70 lbs 195.00-217.50.

Families Selection 1-2 2-4 yrs 75-80 lbs exp with <20 lb kids 190.00-250.00 per family.

Explanatory Notes: Stage - Represents estimated lambing/kidding period (Open, Exp=exposed, Bred, Fall = Sep-Nov, Win = Dec-Feb, Spr = Mar-May, Sum=Jun-Aug; w/s = woolled and shorn; /hd= per head; /fam=per family
All price CWT unless otherwise noted.

MISSOURI DROUGHT MONITOR

Date	None	D0	D1	D2	D3	D4
7/1/25	92.16	6.80	1.04	0	0	0
6/24/25	83.86	13.16	2.98	0	0	0
7/2/24	79.93	15.66	4.41	0	0	0

Reflects percentage of Missouri impacted by drought. D0 Abnormally Dry; D1 Moderate Drought; D2 Severe Drought; D3 Extreme Drought; D4 Exceptional Drought

NATIONAL DIRECT DELIVERED FEEDER PIG REPORT

7/3/25 Receipts: 110,185 Week ago: 150,912 Year Ago: 113,893
Early weaned pigs steady and feeder pigs mostly 2.00 lower.
Cash 74,802 head 45.00-65.00, weighted average 55.75
Formula 17,733 head 48.18-65.01, weighted average 53.71
Feeder pigs 40 pounds basis: Cash 17,650 head 80.00-95.00, weighted average 88.29

NATIONAL DAILY DIRECT PRIOR DAY HOG REPORTS 7/3/25

BARROWS AND GILTS (Carcass Basis): 4,116 head
Base Carcass Price 105.00-114.00, weighted average 111.25

SOWS (Live Basis): 7,244 head
300-500 lbs. 30.00-95.79
Over 500 lbs. 78.66-96.22

MISSOURI WEEKLY DIRECT SLAUGHTER CATTLE REPORT 7/3/25

Weekly Receipts: 280 Week ago: 240 Year ago: 320
Trading as of Friday morning, flat dressed prices 6.00 to 11.00 lower and grid dressed sales inactive.

LIVE STEERS & HEIFERS: No sales reported
DRESSED STEERS & HEIFERS: 4 loads flat Wed 365.00

GRADE AND EIGHT (Grid): 3 loads Wed 374.00

Click here for the current [National Crop Progress](#)
Click here for the current [Missouri Crop Progress](#)
The current hay directory can be found at: [Hay Directory](#).