

Weekly Market Summary

Published by:
Missouri Department of Agriculture
Ag Business Development Division
Market News Program



Chris Chinn, Director
Jill Wood, Division Director
Tony Hancock, Editor
<http://www.ams.usda.gov/marketnews.htm>
<http://www.ams.usda.gov/marketnews.htm>

Michael Kehoe, Governor

Volume XLV, Number 28 ♦ P.O. Box 630, Jefferson City, MO 65102 ♦ (573) 751-4211 ♦ Mon, July 14, 2025

MISSOURI WEEKLY FEEDER CATTLE WEIGHTED AVERAGE REPORT

Feeder Cattle Receipts: 24,166 Week ago: 16,055 Year ago: 28,451
Steers and Heifers Medium and Large 1—Weighted average weights and prices

STEERS: Medium and Large 1

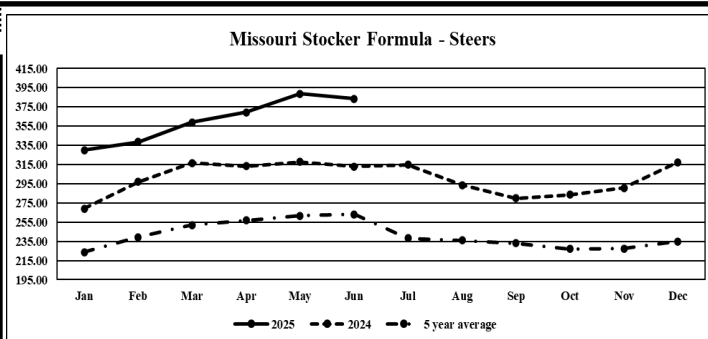
321 lbs. 472.40	523 lbs. 418.63	725 lbs. 339.38	1002 lbs. 281.50
378 lbs. 471.62	576 lbs. 393.42	779 lbs. 323.58	
423 lbs. 456.66	626 lbs. 376.09	820 lbs. 316.46	
478 lbs. 427.38	666 lbs. 359.06	865 lbs. 315.10	

HEIFERS: Medium and Large 1

330 lbs. 431.78	522 lbs. 369.22	729 lbs. 319.44
375 lbs. 425.44	576 lbs. 347.13	774 lbs. 302.80
427 lbs. 413.95	625 lbs. 340.50	808 lbs. 305.65
475 lbs. 386.44	666 lbs. 336.89	

MISSOURI STEER (HEIFER) STOCKER FORMULA 7/14/2025

Monday's Missouri Stocker formula consists of **5,910 (5,539)** head with a weighted average weight of **552.31 (546.37)** lbs. and a price value of **396.77 (357.42)**, 6.81 higher (4.57 higher) than a week ago. This a rolling seven day calculated weighted value which combines all Feeder Steers reported by MDA/USDA Market News Service weighing from 400-649 lbs. in the Medium and Large 1 and Medium and Large 1-2 frame and muscle classifications, including all comment cattle except Brahman X. Heifer values are in parentheses.

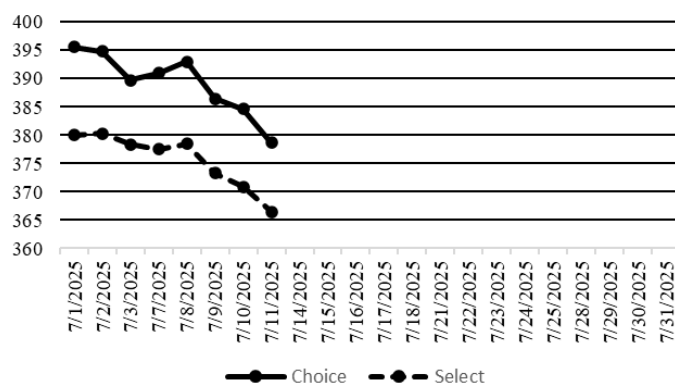


*Graph is updated the first Monday of each month. Axis value ranges may be updated to reflect data points.

NATIONAL BOXED BEEF CUTOUT VALUES

DATE	CHOICE	SELECT	TOTAL LOADS
7/7	390.98	377.53	94
7/8	393.04	378.46	99
7/9	386.45	373.27	143
7/10	384.66	370.86	69
7/11	378.64	366.49	138
5 Day Simple Average	386.75	373.32	

Boxed Beef Cuts July 2025



*Axis value ranges may be updated to reflect data points.

WEEKLY LIVESTOCK SLAUGHTER 7/12/25

	CATTLE	HOGS	SHEEP
Week to Date:	568,000	2,371,000	34,000
Last Week:	474,000	1,846,000	31,000
Last Year:	604,573	2,369,172	35,403

The Weekly Market Summary, as well as historical summaries, are available on our website <https://agmarketnews.mo.gov/summaries>
Market News Hotline: 1-573-522-9244
Check out the latest updates on our YouTube Channel: [MDA Market News](https://www.youtube.com/channel/UCM4M4M4M4M4M4M4M4M4M4M4)

MISSOURI WEEKLY CATTLE AUCTION SUMMARY

Total Receipts: 27,159 Week Ago: 17,504 Year Ago: 31,815
Compared to last week, feeders under 650 lbs. sold 5.00 to 10.00 higher and over 650 lbs. sold steady to 5.00 higher. The supply of feeders was moderate with several auctions seeing some larger consignments of reputation cattle that producers save for marketing about point annually. Demand was good to very good with the rising cost of yearlings pulling up the price of calves which typically do not establish new yearly highs in the middle of summer. Most years also don't typically have pasture conditions rated at 88 percent good to excellent in the middle of July either. The Missouri Stocker Formula was at a new all-time record higher earlier in the week with in just a few cents of the 400.00 mark. The CME Feeder Cattle Index also climbed to new records this week with the most recent value of 323.37. Stick out sales this week included 54 head of 514 lb. steers at Callaway Livestock Center which sold for 454.00, 62 head of 624 lb. steers sold for 407.50. Interstate Regional Stockyards sold 91 head of 651 lbs. steers for 370.75. South Central Regional Stockyards sold 65 head of 707 lb. steers for 356.75 and 68 head of 830 lb. steers for 325.00. Joplin Regional Stockyards sold 125 head of 875 lb. steers for 321.50. On the heifer side of the market 86 head of 539 lb. heifers sold at Callaway Livestock Center for 421.25. Windsor Livestock Auction sold 149 head of 666 lb. heifers for 343.75. Several loads of 700-750 lb. heifers sold at various barns again this week with nearly all of them being high enough to be consider stick out sales but the one that really stuck out was 73 head of 716 lb. heifers at Kingsville Livestock Auction that sold for 333.00. Boxed beef cutout values were sharply lower for the week, choice closed on Friday at 378.64, down 11.11 and Select closed at 366.49, down 11.95 compared to last Friday. Negotiated feedlot sales as of the 2:00 cutoff time on Friday afternoons report totaled just under 58K for the week. Prices were sharply higher nearing record territory once again. Live trade in the south 228.00-230.00, in the north live sales from 235.00-242.00 and dressed sales were 375.00 to mostly at 380.00. The Missouri Stocker formula consists of 5910 head with a weighted average weight of 552.31 lbs. and a price value of 396.77, 6.81 higher than last week. The steer/heifer spread is 39.35 per cwt.

SOUTHWEST MISSOURI WEEKLY SUMMARY

(Joplin and Springfield)

Receipts: 8,071 Week ago: 6,182 Year Ago: 12,880

Compared to last week, steers and heifers steady to 7.00 higher, spots up to 15.00 higher except steer calves early week steady to 8.00 lower. Slaughter cows steady to 2.00 lower. Slaughter bulls steady to 5.00 lower.

FEEDER STEERS:

Medium and Large 1

300-400 lbs.	440.00-500.00
400-500 lbs.	390.00-475.00
500-600 lbs.	360.00-415.00
600-700 lbs.	332.00-380.00
700-800 lbs.	314.50-345.00
800-900 lbs.	302.00-321.50
15 hd 1002 lbs.	281.50

FEEDER HEIFERS:

Medium and Large 1

350-400 lbs.	425.00-440.00
400-500 lbs.	350.00-430.00
500-600 lbs.	332.00-371.00
600-700 lbs.	310.00-355.00
700-800 lbs.	298.00-324.00
800-850 lbs.	290.00-307.00

FEEDER HOLSTEIN STEERS

Large 3

Pkg 394 lbs.	300.00
Pkg 553 lbs.	290.00
600-700 lbs.	264.00-287.50
700-750 lbs.	256.00-285.00
900-1000 lbs.	235.00-260.00
1000-1100 lbs.	240.00-245.00

SLAUGHTER COWS: Breaking and Boning (70-85% lean) 149.00-163.50; high dressing 160.00-177.00; low dressing 127.50-152.00. Lean (85-90%) 130.00-151.00.

SLAUGHTER BULLS: Yield Grade 1-2 1075-2560 lbs. 180.00-207.00; high dressing 201.00-217.00; low dressing 145.00-182.00.

BRED COWS: Medium and Large 1 2-8 yrs 900-1360 lbs 2nd/3rd stage 2700.00-2800.00, 1st stage 2400.00-2500.00; >8 yrs 1105-1315 lbs 2500.00-2700.00. Medium and Large 1-2 2-8 yrs 900-1370 lbs 2nd/3rd stage 200.00-2675.00, 1st stage 1900.00-2400.00; >8 yrs 975-1505 lbs 2nd/3rd stage 1900.00-2550.00, 1st stage 1850.00-1950.00 per head

BRED HEIFERS: Medium and Large 1 2-4 yrs 1078-1120 lbs 2nd/3rd stage 2700.00-3100.00 per head

COW & CALF PAIRS: Medium and Large 1 2-8 yrs 1489-1515 lbs with 150-300 lb calves 3250.00-3525.00; 2-8 yrs 1278 lbs rebred 1st stage with 150-300 lb calves 3425.00. Medium and Large 1-2 2-4 yrs 960-1060 lbs with 150-300 lb calves 3950.00; 2-8 yrs 1085-1455 lbs with 150-300 lb calves 2650.00-3750.00; 2-8 yrs 1380-1410 lb with >300 lb calves 3650.00-3750.00 per pair

SOUTH CENTRAL MISSOURI WEEKLY SUMMARY

(West Plains, Phillipsburg)

Receipts: 2,738 Week ago: 2,135 Year Ago: 3,481

Compared to last week, steer and heifer calves 4.00 to 10.00 higher, spots 15.00 higher. Yearlings 2.00 to 4.00 higher. Slaughter cows and bulls steady to 2.00 higher.

FEEDER STEERS:

Medium and Large 1

350-400 lbs.	450.00-465.00
400-500 lbs.	402.50-452.50
500-600 lbs.	377.50-410.00
600-700 lbs.	342.50-382.50
700-800 lbs.	316.00-333.00
800-900 lbs.	298.00-301.00

FEEDER HEIFERS:

Medium and Large 1

Pkg 342 lbs.	415.00
400-500 lbs.	362.50-377.50
500-600 lbs.	327.50-380.00
600-700 lbs.	326.50-359.00

SLAUGHTER COWS: Breaking and Boning (70-85% lean) 149.00-166.00, high dressing 160.50-179.00; low dressing 129.00-156.00. Lean (85-90%) 127.00-154.00.

SLAUGHTER BULLS: Yield Grade 1-2 1215-2315 lbs. 184.00-198.00; high dressing 203.00-220.00; low dressing 159.00-182.50.

FEEDER HOLSTEIN STEERS:

Large 3

Scarce

Scarce

BRED COWS: Medium and Large 1 2-8 yrs 1395-1410 lbs 2nd/3rd stage 2600.00-2800.00. Medium and Large 1-2 2-4 yrs 860-1070 lbs 1st to 3rd stage 2275.00-2350.00; 2-8 yrs 1035-1365 lbs 1035-1365 lbs 2nd/3rd stage 2500.00-3000.00, 1st stage 2300.00-2700.00 per head

COW & CALF PAIRS: Medium 1-2 2-8 yrs 1175-1320 lbs with 150-300 lb calves 3100.00-3900.00 per pair

WEST CENTRAL MISSOURI WEEKLY SUMMARY

(Kingsville, Windsor, Butler)

Receipts: 4,162 Week ago: 1,125 Year ago: 4,836

Compared to last week, steers and heifers 5.00 to 10.00 higher. Slaughter cows steady to firm.

FEEDER STEERS:

Medium and Large 1

400-500 lbs.	414.00-480.00
500-600 lbs.	390.00-436.50
600-700 lbs.	349.00-401.00
700-800 lbs.	330.00-356.00
62 hd 800 lbs.	322.25

FEEDER HEIFERS:

Medium and Large 1

Pkg 356 lbs.	442.50
400-500 lbs.	390.00-429.00
500-600 lbs.	319.50-399.00
600-700 lbs.	319.75-360.00
73 hd 716 lbs.	333.00
13 hd 803 lbs.	302.00

SLAUGHTER BULLS: Yield Grade 1-2 1210-2255 lbs. 174.00-218.00; low dressing 170.00-174.00.

SLAUGHTER COWS: Breaking and Boning (70-85% lean) 150.00-176.00, high dressing 166.00-183.00. Lean (85-90%) 137.00-167.00

BRED COWS: Scarce

COW & CALF PAIRS: Medium and Large 1-2 2-8 yrs 1200 lbs with >300 lb calves 3150.00 per pair

NORTHEAST MISSOURI WEEKLY SUMMARY

(Bowling Green, Kingdom City, Palmyra)

Receipts: 5,555 Week ago: 2,531 Year ago: 5,905

Compared to last week, steers and heifers firm to 10.00 higher. Slaughter cows mostly steady to firm.

FEEDER STEERS:

Medium and Large 1

300-400 lbs.	458.50-520.00
400-500 lbs.	423.00-515.00
500-600 lbs.	386.00-454.00
600-700 lbs.	347.00-402.50
700-800 lbs.	326.00-352.50
60 hd 884 lbs.	313.75

FEEDER HEIFERS:

Medium and Large 1

300-400 lbs.	412.50-460.00
400-500 lbs.	390.00-445.00
500-600 lbs.	344.50-402.50
600-700 lbs.	312.00-368.00
700-750 lbs.	316.50-322.00

SLAUGHTER BULLS: Yield Grade 1-2 1385-2175 lbs. 184.50-217.00; high dressing 203.00-222.00; low dressing 170.00-187.00.

SLAUGHTER COWS: Breaking and Boning, (70-85% lean) 151.00-171.00; high dressing 165.00-189.50. Lean (85-90%) 140.00-161.00.

SLAUGHTER STEERS: Choice 2-3 231.00-237.50, low dressing 228.00-230.00. Select and Choice 1-3 224.00.

SLAUGHTER HEIFERS: Choice 2-3 230.00-236.50. Select and Choice 2-3 224.00-230.00.

BRED COWS: Scarce

COW CALF PAIRS: Scarce

NORTH CENTRAL MISSOURI WEEKLY SUMMARY

(Macon, Unionville, Green City, New Cambria)

Receipts: 1,219 Week ago: 4,304 Year ago: 788

Compared to the most recent sales, steers and heifers firm to 10.00 higher. Slaughter cows steady to 5.00 higher.

*Some sale barns on a bi-weekly schedule and may not have a sale each week.

FEEDER STEERS:

Medium and Large 1

350-400 lbs.	475.00-520.00
400-500 lbs.	450.00-474.00
500-600 lbs.	407.00-457.50
600-700 lbs.	374.00-403.00
Lot 710 lbs.	379.00
850-900 lbs.	319.75-320.25

FEEDER HEIFERS:

Medium and Large 1

450-500 lbs.	400.00-438.00
500-600 lbs.	377.00-398.00
600-700 lbs.	335.00-385.00
700-750 lbs.	329.00-339.00

SLAUGHTER BULLS: Yield Grade 1-2 1400-2100 lbs. 186.00-227.00

SLAUGHTER COWS: Breaking and Boning (70-85% lean) 146.00-178.00; high dressing 170.00-184.00; low dressing 144.00-157.00. Lean (85-90%) 142.00-153.00

BRED COWS: Medium and Large 2 >5 yrs 1150 lbs 2nd/3rd stage 2500.00 per head

COW/CALF PAIRS: Medium and Large 1-2 2-8 yrs 1250-1300 lbs with 150-300 lb calves 3700.00-4050.00 per pair

SOUTHEAST MISSOURI WEEKLY SUMMARY

(Jackson and Farmington)

Receipts: 1,896 Week ago: 257 Year ago: 970

Compared to three weeks ago, steers and heifers 4.00 to 16.00 higher. Slaughter cows 4.00 higher. Slaughter bulls steady.

FEEDER STEERS:

Medium and Large 1

300-400 lbs. 400.00-447.00
400-500 lbs. 365.00-360.00
500-600 lbs. 367.00-417.00
600-700 lbs. 319.00-387.00
800-850 lbs. 265.00-316.00

FEEDER HEIFERS:

Medium and Large 1

300-400 lbs. 367.00-435.00
400-500 lbs. 350.00-410.00
500-600 lbs. 300.00-387.00
600-700 lbs. 270.00-322.00
700-800 lbs. 250.00-280.00

SLAUGHTER BULLS: Yield
Grade 1-2 1175-2030 lbs ind
136.00, high dressing 170.50-
218.00

SLAUGHTER COWS: Breaking
and Boning (75-85% lean) 130.00-
157.00; high dressing 149.00-
183.00. Lean (85-90% lean)
110.00-128.00

BRED COWS: Medium and Large
2 2-8 yrs 1005-1295 lbs 2nd/3rd
stage 1975.00-3150.00 per head

COW & CALF PAIRS: Scarce

EAST CENTRAL MISSOURI WEEKLY SUMMARY

(Cuba, Vienna)

Receipts: 3,518 3 Weeks Ago: 2,011 Year ago: 2,955

Compared to three weeks ago, steers 4.00 to 10.00 higher. Heifers steady to 20.00 higher, with the greatest advance under 550 lbs. Slaughter cows steady to 6.00 higher.

FEEDER STEERS:

Medium and Large 1

350-400 lbs. 460.00-500.00
400-500 lbs. 400.00-475.00
500-600 lbs. 360.00-427.00
600-700 lbs. 334.00-390.00
700-800 lbs. 323.00-356.75
800-850 lbs. 314.00-325.00

FEEDER HEIFERS:

Medium and Large 1

300-400 lbs. 420.00-481.00
400-500 lbs. 384.00-446.00
500-600 lbs. 324.00-398.00
600-700 lbs. 312.00-352.00
700-800 lbs. 277.00-300.00

SLAUGHTER BULLS: Yield
Grade 1-2 1265-2145 lbs 182.00
-205.00; high dressing 207.00-
220.00; low dressing 165.00-
175.00

SLAUGHTER COWS: Breaking
and Boning, (70-85% lean) 153.00-
165.50; high dressing 166.00-
182.00. Lean (85-90%) 132.00-
149.00

BRED COWS: Medium and
Large 1-2 5-8 yrs 1185-1510 lbs
1st to 3rd stage 2500.00-2950.00;
>5 yrs 1245-1310 lbs 2nd/3rd
stage 2200.00-2800.00 per head

COW & CALF PAIRS: Scarce

NORTHWEST MISSOURI WEEKLY SUMMARY

(Tina) (w/e7/5/25)

Receipts: 1,227 2 Weeks Ago: 1,506 Year Ago: 1,816

Compared to two weeks ago, steers and heifers traded with a firm undertone. Slaughter cows and bulls steady to 5.00 higher.

FEEDER STEERS:

Medium and Large 1

Pkg 474 lbs. 427.50
500-600 lbs. 401.00-440.00
600-700 lbs. 353.00-385.00
Pkg 796 lbs. 329.50
64 hd 850 lbs. 325.50
131 hd 918 lbs. 313.50

FEEDER HEIFERS:

Medium and Large 1

400-500 lbs. 381.00-402.00
500-600 lbs. 351.00-364.00
600-650 lbs. 330.00-336.50
25 hd 760 lbs. 310.00

SLAUGHTER BULLS:
Yield Grade 1-2 1385-2025 lbs
181.00-199.50; high dressing
204.50-210.00

SLAUGHTER COWS: Breaking
and Boning, (70-85% lean) 152.00-
166.00; high dressing 155.00-
170.50. Lean (85-90%) 137.00-
143.00.

BRED COWS: Scarce

COW/CALF PAIRS: Scarce

AFTERNOON NATIONAL SLAUGHTER CATTLE REVIEW

So far for Friday, negotiated cash trade has been moderate on good demand in Kansas. Compared to last week, live purchases in Kansas have been 4.00-5.00 higher from 228.00-230.00. Negotiated cash trade has been moderate on good demand in Nebraska. Compared to last week, live purchases have been 8.00-10.00 higher at 240.00. Dressed purchases, compared to Thursday, have been steady at 380.00. Negotiated cash trade in the Western Cornbelt has been moderate to heavy on good demand. Compared to Thursday, live purchases have been steady to 5.00 higher while dressed purchases have been steady at 380.00. In the Texas Panhandle, negotiated cash trade has been limited on moderate demand. The last market test in the Texas Panhandle was Thursday at 228.00.

Negotiated Cash Sales:

Confirmed:	35,665	Week Ago:	-	Year Ago:	5,950
Week to date:	57,816	Week Ago:	45,093	Year Ago:	75,991

<u>Live Basis</u>	<u>Steers</u>	<u>Heifers</u>
Over 80% Choice	228.00-242.00, avg 239.50	230.00-241.00, avg 238.34
65-80% Choice	228.00-230.00, avg 228.88	228.00-230.00, avg 228.71
35-65% Choice	228.00-230.00, avg 229.82	228.00-230.00, avg 229.52
0-35% Choice	-	-
Total All Grades	228.00-242.00, avg 237.53	228.00-241.00, avg 235.23
<u>Dressed Basis</u>		
Over 80% Choice	375.00-380.00, avg 379.47	378.00-380.00, avg 379.77
65-80% Choice	375.00-380.00, avg 377.88	380.00
35-65% Choice	380.00	-
0-35% Choice	-	-
Total All Grades	375.00-380.00, avg 379.25	378.00-380.00, avg 379.81

<u>All Beef Type</u> <u>Steers/Heifers</u>	<u>Head</u>	<u>Avg Wt</u>	<u>Price Range</u>	<u>Wtd Avg</u>
Live FOB	23,994	1436.8	228.00-242.00	237.53
Live Del	1,855	1467.4	235.00-242.00	240.01
Dressed Del	8,869	927.3	375.00-385.00	379.45
Dressed FOB	875	965.6	374.00-382.00	379.77

WEEKLY COMMODITY FUTURES TRENDS

Compared to last week, Live Cattle 8.15 to 8.80 higher, Lean Hogs 1.25 to 1.93 lower, Feeder Cattle 14.22 to 16.05 higher.

Daily Futures Closes

	Mon.	Tues.	Wed.	Thu.	Fri.
Cattle					
Aug	215.90	219.97	219.77	219.22	222.20
Oct	212.95	216.82	217.35	217.07	219.70
Dec	213.42	216.62	217.30	217.25	219.57
Feb	213.60	216.35	217.02	217.20	219.60
Apr	213.12	215.52	216.37	216.87	219.32
Lean Hogs					
Jul	106.95	106.97	107.10	107.25	106.72
Aug	107.10	106.77	107.22	106.22	104.67
Oct	92.87	92.97	93.77	92.27	90.65
Dec	84.87	84.67	85.70	83.97	82.27
Feb	86.50	86.27	87.12	85.75	84.27
Fdr Cattle					
Aug	313.72	319.12	320.47	321.27	325.32
Sep	313.52	319.17	320.02	321.22	325.40
Oct	311.35	317.25	318.02	319.12	323.20
Nov	308.42	314.30	315.02	316.07	319.92
Jan	301.62	307.20	307.97	308.77	312.22
Milk					
Jul	17.30	17.23	17.32	17.38	17.37
Aug	18.14	17.91	17.92	17.86	17.76
Sep	18.77	18.56	18.55	18.40	18.40

WEEKLY COMMODITY GRAIN FUTURES TRENDS

Compared to last week, Soybeans 0.40 to 0.52 lower, Wheat 0.07 to 0.14 lower, Corn 0.23 to 0.28 lower, KC Wheat 0.12 to 0.14 lower, Soybean Meal 6.20 to 8.60 lower.

Daily Grain Futures Closes

	Mon.	Tues.	Wed.	Thu.	Fri.
Soybeans					
Jul	1031 3/4	1024 1/4	1012 1/4	1012 1/2	1004
Aug	1031 1/2	1021 1/4	1009	1012 1/2	1004 1/4
Sep	1013 1/2	1008 1/2	997 1/2	1002 1/4	995
Nov	1020 3/4	1017 1/2	1007 1/4	1013 3/4	1007 1/4
Jan	1036 3/4	1034	1024	1030 1/2	1024
Wheat					
Jul	539 3/4	543	542 3/4	550 1/4	540 3/4
Sep	548 1/2	547 3/4	547	554 1/2	545
Dec	570 1/4	568 1/2	567 1/4	575	565 1/2
Mar	588 1/2	586 3/4	585 1/4	593 1/4	583 3/4
May	599 3/4	597 3/4	596 1/4	604	594 1/4
Corn					
Jul	418	411	412 1/2	407 1/4	403
Sep	403 1/2	398	399 1/4	399 1/4	396
Dec	420 3/4	414 1/4	415 1/2	416 1/2	412 1/4
Mar	437 1/4	430 3/4	432 1/4	433 3/4	429
May	448 1/4	441 3/4	443	444 1/2	439 3/4
KC Wheat					
Jul	508 1/2	503 1/2	505 1/2	514	504 1/4
Sep	527 1/2	522 1/2	524	534 3/4	524 1/4
Dec	552	547 1/4	547 3/4	558 1/4	548 1/4
Mar	574	569 3/4	570	580 1/2	570 1/4
May	587 1/2	583 1/4	583 3/4	594 1/4	584
SB Meal					
Jul	268.50	267.20	266.10	268.50	267.60
Aug	272.20	270.70	269.40	271.40	270.30
Sep	276.10	274.50	273.30	276.40	274.20
Oct	279.30	277.90	276.70	278.90	277.40
Dec	285.90	284.30	282.90	285.30	283.60

MISSOURI GRAIN WEEKLY TRENDS

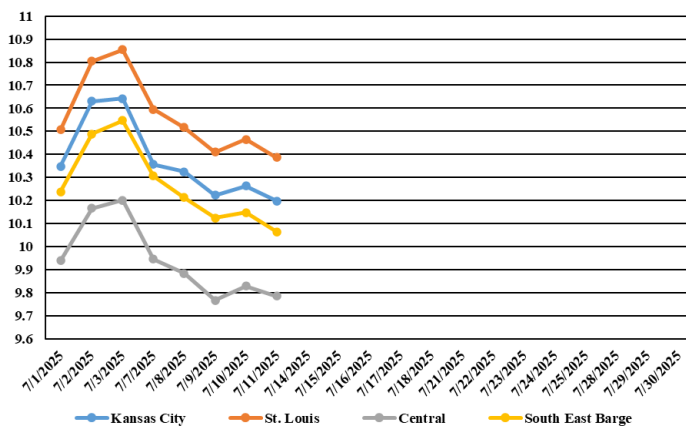
Compared to last Thursday, Soybeans 0.42 to 0.49 lower, Wheat 0.12 to 0.16 lower, Corn 0.24 lower, Sorghum no trend due to lack of bids.

Area	#1 Soybeans	#2 Soft Wheat	#2 Corn	#2 Grain Sorghum
Kansas City				
Friday**	Holiday			
Monday	10.26-10.46	5.49	4.24	3.14
Tuesday	10.23-10.43	5.48	4.18	3.08
Wednesday	10.12-10.32	5.47	4.19	3.09
Thursday	10.19-10.34	5.55	4.19	3.09
Friday	10.12-10.27	5.45	4.16	3.06
St. Louis				
Friday**	Holiday			
Monday	10.58-10.62	5.22-5.32	4.44-4.46	
Tuesday	10.50-10.53	5.20-5.31	4.38-4.40	
Wednesday	10.38-10.44	5.19-5.30	4.39-4.41	
Thursday	10.46-10.48	5.27-5.38	4.39-4.41	
Friday	10.37-10.40	5.17-5.28	4.36	
Central				
Friday**	Holiday			
Monday	9.86-10.02	4.94-5.34	3.84-3.89	
Tuesday	9.86-9.91	5.93-5.33	3.78-3.83	
Wednesday	9.74-9.79	4.92-5.32	3.79-3.84	
Thursday	9.83-9.84	5.00-5.40	3.79-3.84	
Friday	9.77-9.79	4.90-5.30	3.76-3.86	
S.E. MO				
Friday**	Holiday			
Monday	10.09-10.57		4.15-4.39	
Tuesday	10.01-10.46		4.09-4.33	
Wednesday	9.89-10.39		4.27-4.34	
Thursday	9.90-10.43		4.27-4.34	
Friday	9.81-10.34		4.24-4.31	

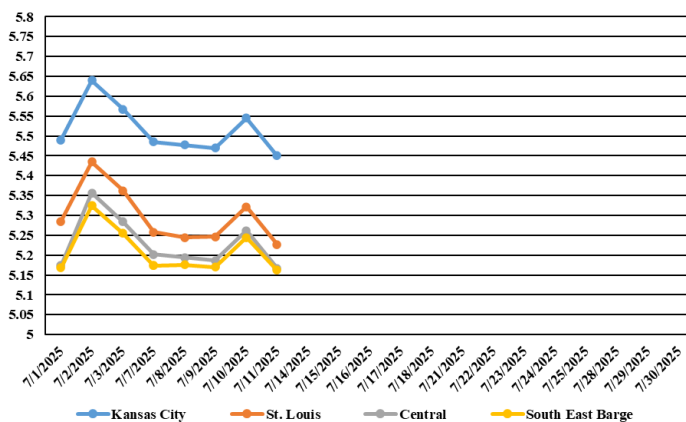
(PRICES PER BUSHEL) *NEW CROP **PREVIOUS WEEK'S PRICES
*Bids calculated using Kansas City, St. Louis, and St. Joseph bids

MONTHLY GRAIN CROP

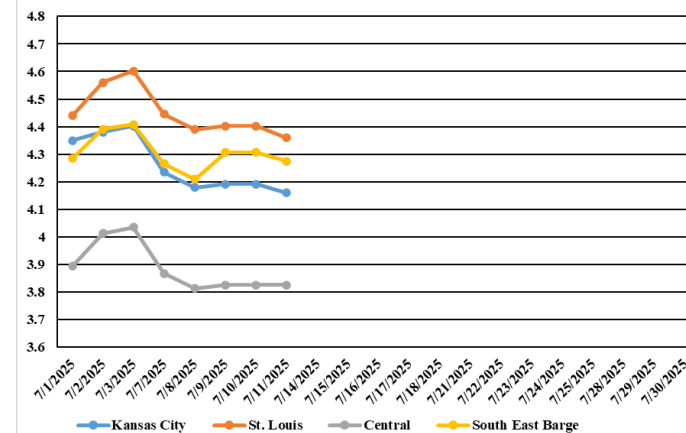
July 2025 Soybean Bids



July 2025 Wheat Bids



July 2025 Corn Bids



*Axis value ranges may be updated to reflect data points.
Only dates in which markets are trading and only current cash bids are represented.

WHOLESALE FEEDSTUFFS PRICES (DOLLARS PER TON-BULK BASIS)

Area	Cottonseed Meal 41%	Soybean Meal 46.5-48%	Corn Gluten Pellets 21%	Wheat Middlings
Kansas City	297.50	246.35	190.00	93.33
St. Louis	292.50	n/a	185.00	95.00

MISSOURI CROP PROGRESS REPORT 7/7/25

There were 5.0 days suitable for fieldwork in the week ending July 6, 2025. Topsoil moisture supply was rated 1 percent very short, 11 percent short, 75 percent adequate, and 13 percent surplus. Subsoil moisture supply was rated 1 percent very short, 11 percent short, 78 percent adequate, and 10 percent surplus. Corn silking reached 46 percent, compared to the 5-year average of 33 percent. Corn in the dough stage reached 9 percent, compared to the 5-year average of 2 percent. Corn condition was rated 1 percent very poor, 5 percent poor, 20 percent fair, 62 percent good, and 12 percent excellent. Soybeans emerged reached 92 percent, compared to the 5-year average of 94 percent. Soybeans blooming reached 29 percent, compared to the five-year average 21 percent. Soybeans setting pods reached 6 percent complete, compared to 3 percent for the 5-year average. Soybean condition was rated 3 percent poor, 24 percent fair, 68 percent good, and 5 percent excellent. Winter wheat harvested reached 90 percent, compared to the 5-year average of 88 percent. Winter wheat condition was rated 4 percent poor, 28 percent fair, 53 percent good, and 15 percent excellent.

	Week Ending			
	7/6/24	6/29/25	7/6/25	5 yr average
Corn Silking	56	19	46	33
Corn Dough	8	1	9	2
Soybeans Blooming	28	14	29	21
Soybeans Setting Pods	6	1	6	3
Winter Wheat Harvested	95	65	90	88
Alfalfa hay 2nd cutting	40	27	48	51
Other hay cut	84	66	79	83

WASDE

U.S. oilseed production for 2025/26 is projected at 128.3 million tons, down 0.1 million from last month on lower soybean, sunflower, canola, and peanut production partly offset by higher cottonseed. The 2025/26 outlook for U.S. soybeans shows slightly lower production, higher crush, reduced exports, and increased ending stocks compared to last month. Soybean production is projected at 4.3 billion bushels, down 5 million from last month on lower harvested acres and an unchanged yield of 52.5 bushels per acre. The outlook for 2025/26 U.S. wheat this month is for increased supplies, unchanged domestic use, higher exports, and lower ending stocks. Supplies are raised as wheat production is projected at 1,929 million bushels, up 8 million from last month on higher yields more than offsetting reduced harvested area. The all wheat yield is 52.6 bushels per acre, up 1.0 bushel from last month. Winter wheat production is lowered 36 million bushels to 1,345 million with reductions in Hard Red Winter and Soft Red Winter. Exports are raised by 25 million bushels to 850 million on a strong early pace of sales and shipments. Projected 2025/26 ending stocks are lowered 8 million bushels to 890 million but are up 5 percent from last year. The projected 2025/26 season-average farm price (SAFP) is unchanged at \$5.40 per bushel, down from last year's final SAFP of \$5.52. This month's 2025/26 U.S. corn outlook is for smaller supplies, domestic use, and ending stocks. Corn beginning stocks are cut 25 million bushels to 1.3 billion, reflecting an increase in exports that is partly offset by lower feed and residual use for 2024/25. Feed and residual use is down 75 million based on indicated disappearance in the June 30 Grain Stocks report. Exports are raised 100 million bushels to 2.8 billion based on current outstanding sales and shipments to date and, if realized, would be record high. Corn production for 2025/26 is forecast down 115 million bushels on lower planted and harvested area from the June 30 Acreage report. The yield is unchanged at 181.0 bushels per acre.

MISSOURI WEEKLY HAY SUMMARY 7/10/25

Special Note: Beginning 6/19/25, this report will be published biweekly. Any questions or concerns can be emailed to mymarketnews@usda.gov. As of the latest drought monitor just over 90% of the state is considered drought free. Pasture conditions are rated at 88% good to excellent. Neither of those two things would be considered common for Mid-July. Hay progress for hay other than alfalfa is running slightly behind average pace. Getting hay baled this year has been a challenge due to rains, although weather has been good for grass growth and much of the hay has been baled with a significant amount of maturity which has affected quality. Demand is light to moderate with most coming from equine interest. Most cattle producers not really in the market at this time. The supply of hay is moderate, and demand is light to moderate. The Missouri Department of Agriculture has a hay directory at <https://apps.mda.mo.gov/haydirectory> or visit the University of Missouri Extension feed stuff finder at <https://feedstufffinder.org>
Alfalfa - Supreme 250.00-300.00, small square 10.00-15.00 per bale
Alfalfa - Premium 175.00-225.00
Alfalfa - Good 150.00-175.00, small square 6.00-10.00 per bale
Alfalfa - Fair 125.00-150.00
Mixed Grass—Premium 150.00-200.00
Mixed grass - Good/Premium 100.00-150.00
Mixed grass-Fair/Good 75.00-125.00, small square 3.00-7.00 per bale
Mixed grass - Fair 25.00-50.00 per large round bale
Wheat straw - 4.00-7.00 per small square bale

Please Note: The above volumes (tonnage, acres, and bales) listed are for confirmed trades only, it does not include estimated volume (tonnage) for bids or offers to the trade. List your hay for sale at: [Hay Listing Online Form](#). Explanation of Hay Quality Guidelines: [Hay Quality Designation Guidelines](#). Glossary of Terms: [Livestock, Poultry, & Grain Hay Terms](#)

MISSOURI WEEKLY SHEEP/GOAT AUCTION SUMMARY 7/13/25

Receipts: 2,325 Week Ago: 776 Last Year: 2,968
SHEEP: Feeder lambs Medium and Large 1 hair 30-50 lbs. 240.00-280.00. Medium and Large 1-2 hair 25-65 lbs 205.00-232.50. Small and Medium 1-2 hair 25-50 lbs 220.00-275.00, fancy 265.00-275.00.
Slaughter lambs Choice and Prime 1-3 w/s 70-135 lbs 205.00-240.00. Choice 1-3 w/s 125-175 lbs 100.00-107.50. Choice 1-2 woolled 60-110 lbs 195.00-230.00. Choice and Prime 1-2 hair 50-80 lbs 232.50-245.00. Choice and Prime 1-3 hair 50-115 lbs 240.00-265.00. Choice 1-2 hair 45-75 lbs 225.00-240.00. Choice 1-3 hair 50-85 lbs 212.50-240.00. Good and Choice 1-2 hair 50-70 lbs 230.00-240.00; pkg 93 lbs 115.00.
Slaughter ewes Good and Choice 1-2 pkg 185 lbs 105.00. Choice and Prime 1 hair 125-145 lbs 150.00-155.00. Choice 1-2 hair pkg 130 lbs 130.00. Good and Choice 1 hair 115-135 lbs 110.00-118.00. Good 2-3 hair 110 lbs 140.00. Utility and Good 1-3 95-125 lbs 110.00/hd. Bucks 1-2 110-195 lbs 120.00-180.00.
Replacement ewes Medium and Large 1 >6 yrs 101 lbs exp 175.00. Medium 1-2 4-6 yrs 113 lbs exp 175.00; >6 yrs 100-115 lbs exp 120.00-150.00. Medium and Large 1 hair 1-6 yrs 95-120 lbs exp 182.00-195.00. Small and Medium 1-2 hair 1-2 yrs 125-140 lbs exp 170.00-190.00/hd; 2-4 yrs 80-150 lbs exp 155.00-260.00/hd; 4-6 yrs 80-90 lbs exp 152.50-155.00/hd. Families Small and Medium 1-2 2-4 yrs 120-125 lbs with 20-40 lb lambs 285.00-340.00/fam; 4-6 yrs 80-120 lbs with 20-40 lb lambs 250.00-265.00/fam.
Hair Bucks Small and Medium 1-2 <1 yrs 105-140 lbs 300.00-400.00/hd.
GOATS: Feeder kids Selection 1 30-45 lbs 320.00-335.00. Selection 2 pkg 28 lbs 230.00; 30-50 lbs 240.00-280.00, pygmies 280.00. Selection 3 25-30 lbs 140.00-155.00; 30-50 lbs 200.00-225.00.
Slaughter kids Selection 1 pkg 33 lbs 285.00; 50-75 lbs 315.00-375.00; 80-85 lbs 285.00-300.00. Selection 1-2 60-70 lbs 320.00-332.50. Selection 2 50-60 lbs 260.00-305.00; 65-90 lbs 210.00-220.00. Selection 3 55-65 lbs 165.00-230.00.
Slaughter does Selection 1 105-120 lbs 175.00-180.00. Selection 1-2 pkg 54 lbs 130.00; 70-100 lbs 150.00-210.00; 90-140 lbs 120.00-190.00. Selection 1-2 70-95 lbs 105.00-157.50/hd.
Slaughter bucks Selection 1-2 100-210 lbs 190.00-280.00.
Wethers Selection 1-2 75-130 lbs 300.00-330.00. Wether kids Selection 2 pkg 57 lbs 300.00.
Replacement does Selection 1-2 2-4 yrs 90-105 lbs exp 170.00-185.00. Selection 2 <1 yrs 56 lbs 210.00; 1-2 yrs 73 lbs 130.00.

Explanatory Notes: Stage - Represents estimated lambing/kidding period (Open, Exp=exposed, Bred, Fall = Sep-Nov, Win = Dec-Feb, Spr = Mar-May, Sum=Jun-Aug; w/s = woolled and shorn; /hd= per head; /fam=per family
All price CWT unless otherwise noted.

MISSOURI DROUGHT MONITOR

Date	None	D0	D1	D2	D3	D4
7/8/25	90.22	8.87	0.91	0	0	0
7/1/25	92.16	6.80	1.04	0	0	0
7/9/24	95.42	4.58	0	0	0	0

Reflects percentage of Missouri impacted by drought. D0 Abnormally Dry; D1 Moderate Drought; D2 Severe Drought; D3 Extreme Drought; D4 Exceptional Drought

NATIONAL DIRECT DELIVERED FEEDER PIG REPORT

7/11/25 Receipts: 134,865 Week ago: 110,185 Year Ago: 78,927
Early weaned pigs unevenly steady. Feeder pigs mostly 5.00 lower.
Cash 78,209 head 40.00-65.00, weighted average 56.72
Formula 33,815 head 47.38-65.19, weighted average 56.37
Feeder pigs 40 pounds basis: Cash 22,841 head 70.00-90.00, weighted average 82.58

NATIONAL DAILY DIRECT PRIOR DAY HOG REPORTS 7/11/25

BARROWS AND GILTS (Carcass Basis): 4,957 head
Base Carcass Price 100.00-113.50, weighted average 111.21

SOWS (Live Basis): 7,360 head
300-500 lbs. 30.00-96.00
Over 500 lbs. 75.22-97.30

MISSOURI WEEKLY DIRECT SLAUGHTER CATTLE REPORT 7/11/25

Weekly Receipts: 200 Week ago: 280 Year ago: 320
Trading as of Friday morning, flat dressed prices inactive with grid dressed sales 10.00 higher.

LIVE STEERS & HEIFERS:
No sales reported

DRESSED STEERS & HEIFERS:
No sales reported

GRADE AND EIGHT (Grid): 5 loads 384.00

Click here for the current [National Crop Progress](#)
Click here for the current [Missouri Crop Progress](#)
The current hay directory can be found at: [Hay Directory](#).