

Weekly Market Summary

Published by:
Missouri Department of Agriculture
Ag Business Development Division
Market News Program



Chris Chinn, Director
Jill Wood, Division Director
Tony Hancock, Editor
<http://www.ams.usda.gov/marketnews.htm>
<http://www.ams.usda.gov/marketnews.htm>

Michael Kehoe, Governor

Volume XLV, Number 29 ♦ P.O. Box 630, Jefferson City, MO 65102 ♦ (573) 751-4211 ♦ Mon, July 21, 2025

MISSOURI WEEKLY FEEDER CATTLE WEIGHTED AVERAGE REPORT

Feeder Cattle Receipts: 18,733 Week ago: 24,166 Year ago: 14,203
Steers and Heifers Medium and Large 1—Weighted average weights and prices

STEERS: Medium and Large 1

322 lbs. 476.43	523 lbs. 412.25	724 lbs. 340.39	917 lbs. 310.14
368 lbs. 478.77	574 lbs. 393.52	772 lbs. 331.29	962 lbs. 302.00
426 lbs. 450.79	629 lbs. 371.21	817 lbs. 320.23	
475 lbs. 431.39	671 lbs. 357.06	870 lbs. 317.84	

HEIFERS: Medium and Large 1

327 lbs. 436.72	522 lbs. 369.38	708 lbs. 327.69
380 lbs. 432.53	576 lbs. 351.99	773 lbs. 311.18
421 lbs. 414.92	621 lbs. 341.02	879 lbs. 272.99
469 lbs. 393.95	678 lbs. 334.33	915 lbs. 282.25

MISSOURI STEER (HEIFER) STOCKER FORMULA 7/21/2025

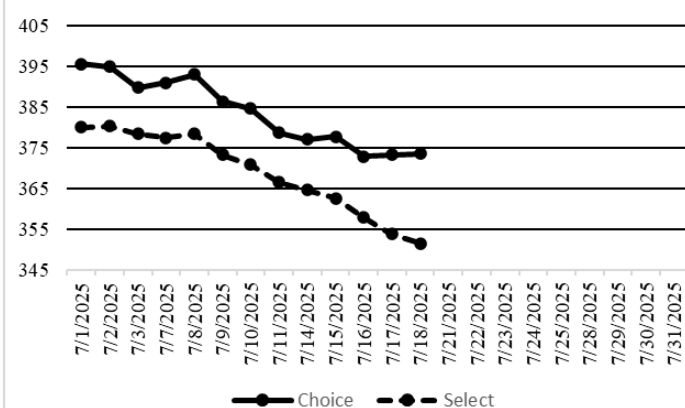
Monday's Missouri Stocker formula consists of **3671 (3710)** head with a weighted average weight of **552.98 (538.12)** lbs. and a price value of **388.43 (361.94)**, 8.34 lower (4.52 higher) than a week ago.

This a rolling seven day calculated weighted value which combines all Feeder Steers reported by MDA/USDA Market News Service weighing from 400-649 lbs. in the Medium and Large 1 and Medium and Large 1-2 frame and muscle classifications, including all comment cattle except Brahman X. Heifer values are in parentheses.

NATIONAL BOXED BEEF CUTOUT VALUES

DATE	CHOICE	SELECT	TOTAL LOADS
7/14	377.07	364.58	95
7/15	377.70	362.58	147
7/16	372.85	357.91	154
7/17	373.28	353.84	139
7/18	373.55	351.46	103
5 Day Simple Average	374.89	358.07	

Boxed Beef Cuts July 2025



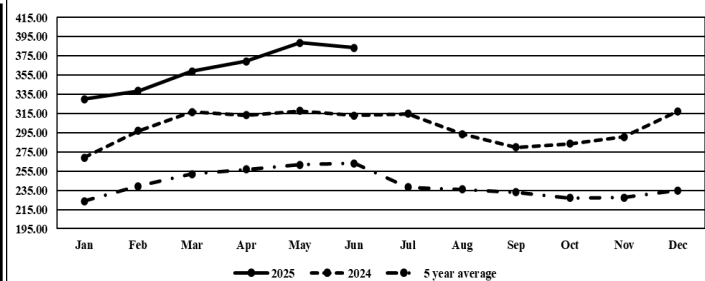
*Axis value ranges may be updated to reflect data points.

WEEKLY LIVESTOCK SLAUGHTER 7/18/25

	CATTLE	HOGS	SHEEP
Week to Date:	563,000	2,342,000	33,000
Last Week:	568,000	2,353,000	34,000
Last Year:	589,374	2,373,523	35,090

The Weekly Market Summary, as well as historical summaries, are available on our website <https://agmarketnews.mo.gov/summaries>
Market News Hotline: 1-573-522-9244
Check out the latest updates on our YouTube Channel: [MDA Market News](https://www.youtube.com/channel/UCM4M4M4M4M4M4M4M4M4M4M4)

Missouri Stocker Formula - Steers



*Graph is updated the first Monday of each month. Axis value ranges may be updated to reflect data points.

MISSOURI WEEKLY CATTLE AUCTION SUMMARY

Total Receipts: 21,924 Week Ago: 27,159 Year Ago: 16,697

Compared to last week, feeder under 600 lbs. sold 5.00 to 10.00 higher and steers and heifers over 600 lbs. sold steady to 5.00 higher. On paper the market for steer calves appeared lower for the week, however this was more of a supply and issue in both numbers and quality than it was an actual downturn of the market. That being said demand for the unweaned bawling calves was less this week as extreme heat set in and this makes it very hard to deal with these types of calves that don't handle stress well. The supply of feeders was light to moderate several auctions were on an off-schedule week and there were others that had very light runs or canceled due to the extreme heat. Rains have continued to fall, and pastures remain in great shape at this point much above neighboring states. Stick out sales this week included 34 head of 348 lbs. steers at Kingsville Livestock Auction for 595.00. Tina Livestock Auction sold a pkg of 512 lb. steers for 444.00. Joplin Regional Stockyards sold 57 head of 552 lbs. steers for 420.00. Lolli Brothers Livestock Market sold 27 head of 611 lb. steers for 414.00, 68 head of 731 lb. steers for 364.75 and 65 head of 875 lb. steers for 319.50. Callaway Livestock Center which sold 120 803 lb. steers for 334.25. Joplin Regional Stockyards sold 131 head of 917 lb. steers for 315.25. Farmington Regional Stockyards sold 100 head of 531 lb. heifers for 389.00. Lolli Brothers Livestock Market sold 75 head of 702 lbs. heifers for 342.85. Boxed beef cutout values were sharply lower for the week, choice closed on Friday at 373.55, down 5.02 and Select closed at 351.49, down 15.00 compared to last Friday. Negotiated feedlot sales as of the 2:00 cutoff time on Friday afternoons report totaled just over 45K for the week. Prices were steady to 2.00 higher. Live trade in the south mostly 230.00, in the north live sales from 237.00-242.00 and dressed sales were mostly at 380.00. The Missouri Stocker formula consists of 3671 head with a weighted average weight of 552.98 lbs. and a price value of 388.43, 8.34 lower than last week. The steer/heifer spread is 26.49 per cwt.

SOUTHWEST MISSOURI WEEKLY SUMMARY

(Joplin and Springfield)

Receipts: 9,029 Week ago: 8,071 Year Ago: 7,699

Compared to last week, steers sold 3.00-15.00 higher with most advance on heavy 5 wts, heifers under 625 lbs. sold steady to 20.00 higher with most gains on 4 wts. over 625 lbs. uneven from 2.00 lower to 5.00 higher. Slaughter cows sold 6.00 lower to 6.00 higher.

FEEDER STEERS: Medium and Large 1

300-400 lbs.	460.00-520.00
400-500 lbs.	390.00-455.00
500-600 lbs.	370.00-432.00
600-700 lbs.	337.50-402.50
700-800 lbs.	319.00-350.00
800-900 lbs.	308.50-324.00
900-1000 lbs.	302.00-315.25

FEEDER HEIFERS: Medium and Large 1

300-400 lbs.	420.00-450.00
400-500 lbs.	370.00-440.00
500-600 lbs.	340.00-380.00
600-700 lbs.	315.00-355.00
700-800 lbs.	300.00-320.00
Pkg 887 lbs.	283.00-286.50
Lot 915 lbs.	

FEEDER HOLSTEIN STEERS Large 3

400-500 lbs.	Scarce
500-600 lbs.	
600-700 lbs.	
700-800 lbs.	
800-900 lbs.	
900-1000 lbs.	

SLAUGHTER COWS: Breaking and Boning (70-85% lean) 147.00-170.00; high dressing 160.00-175.00; low dressing 124.00-156.00. Lean (85-90%) 134.00-157.50.

SLAUGHTER BULLS: Yield Grade 1-2 1045-2570 lbs. 180.00-209.00; high dressing 200.00-233.00; low dressing 170.00-185.00.

BRED COWS: Medium and Large 2-8 yrs 1000-1640 lbs 2nd and 3rd stage 2650.00-3350.00; 1st stage 2300.00-2700.00, short and solid 2nd and 3rd stage 2450.00-2945.00 per head

BRED HEIFERS: Medium and Large 1 few 1150 lbs 2nd and 3rd stage 3150.00.

COW & CALF PAIRS: Medium and Large 1 2-8 yrs 1085-1310 lbs 150-300 lb calves 3600.00-3900.00 per pair

SOUTH CENTRAL MISSOURI WEEKLY SUMMARY

(West Plains, Phillipsburg)

Receipts: 2,738 Week ago: 2,135 Year Ago: 3,481

Compared to last week, feeders sold steady to 8.00 higher, with some spots of 20.00 higher. Slaughter cows uneven 3.00 lower to 2.00 higher. Slaughter bulls sold steady to 3.00 higher.

FEEDER STEERS: Medium and Large 1

350-400 lbs.	457.50-460.00
400-500 lbs.	410.00-442.50
500-600 lbs.	378.00-412.50
600-700 lbs.	338.00-395.00
700-800 lbs.	315.00-362.50
800-900 lbs.	302.00-319.00

FEEDER HEIFERS: Medium and Large 1

Pkg 342 lbs.	415.00-425.00
400-500 lbs.	362.50-403.00
500-600 lbs.	335.00-396.00
600-700 lbs.	315.00-361.00
700-800 lbs.	304.00-319.00

FEEDER HOLSTEIN STEERS: Large 3

Scarce Scarce

SLAUGHTER COWS: Breaking and Boning (70-85% lean) 148.00-168.00, high dressing 167.00-175.00; low dressing 138.00-157.00. Lean (85-90%) 131.00-155.00.

SLAUGHTER BULLS: Yield Grade 1-2 1275-2175 lbs. 182.00-200.00; high dressing 206.00-224.00; low dressing 161.00-181.00.

BRED COWS: Medium and Large 1 2-8 yrs 1020-1400 lbs 2nd and 3rd stage 3000.00-3300.00, 1st stage 2250.00-2300.00 per head

COW & CALF PAIRS: Medium 1-2 2-8 yrs 1250-1400 lbs calves 150-300 lbs 3400.00-3800 per pair

WEST CENTRAL MISSOURI WEEKLY SUMMARY

(Kingsville, Windsor, Butler)

Receipts: 1,775 Week ago: 4,162 Year ago: 946

Compared to last week, steers and heifers sold 3.00-7.00 higher with 300 to 450 wt. better quality heifers selling 5.00-15.00 higher. Slaughter cows and bulls sold 2.00-4.00 higher.

FEEDER STEERS: Medium and Large 1

400-500 lbs.	437.00-472.50
500-600 lbs.	393.50-445.00
600-700 lbs.	356.00-404.00
700-800 lbs.	322.50-349.50

FEEDER HEIFERS: Medium and Large 1

400-500 lbs.	412.00-445.00
500-600 lbs.	360.00-427.50
600-700 lbs.	326.50-367.50
700-800 lbs.	321.50-335.00

SLAUGHTER BULLS: Yield Grade 1-2 1210-2000 lbs. 183.00-211.00; high dressing 216.00-230.00, low dressing 174.00-180.00.

SLAUGHTER COWS: Breaking and Boning (70-85% lean) 151.00-173.00, high dressing 173.00-188.00. Lean (85-90%) 127.00-148.00

BRED COWS: Scarce

COW & CALF PAIRS: Scarce

NORTHEAST MISSOURI WEEKLY SUMMARY

(Bowling Green, Kingdom City, Palmyra)

Receipts: 2,293 Week ago: 5,555 Year ago: 1,653

Compared to last week, steer calves weighing 450-500 lbs sold 10.00-20.00 higher, others weights and classes sold with steady to higher undertones. Slaughter cows sold steady to 5.00 higher.

FEEDER STEERS: Medium and Large 1

300-400 lbs.	497.50-537.50
400-500 lbs.	445.00-470.00
500-600 lbs.	399.00-431.00
600-700 lbs.	391.00
700-800 lbs.	331.25-344.00
800-825 lbs.	330.25-334.25

FEEDER HEIFERS: Medium and Large 1

300-400 lbs.	420.00-431.00
400-500 lbs.	383.00-429.00
500-600 lbs.	343.00-388.00
600-700 lbs.	328.00-331.00
700-800 lbs.	302.00-320.00

SLAUGHTER BULLS: Yield Grade 1-2 1380-2480 lbs. 185.00-203.00; high dressing 205.00-218.00.

SLAUGHTER COWS: Breaking and Boning, (70-85% lean) 161.00-174.00; high dressing 173.00-186.00. Lean (85-90%) 144.00-159.00.

SLAUGHTER STEERS: Choice 2 -3 230.00-240.00 Select and Choice 1-3 233.00

SLAUGHTER HEIFERS: Choice and Prime 2-3 243.00 Choice 2-3 230.00-237.00

BRED COWS: Medium and Large 1-2 5-8 yrs 2nd stage 2525.00-3075.00 per head

COW CALF PAIRS: Medium and Large 1-2 2-8 yrs 975-1350 lbs baby calves 3525.00-3825.00 per pair.

NORTH CENTRAL MISSOURI WEEKLY SUMMARY

(Macon, Unionville, Green City, New Cambria)

Receipts: 1,390 Week ago: 1,219 Year ago: 1,341

Compared to the most recent sales, load lots of yearlings sold steady calves should sharply higher. Slaughter cows steady to firm.

*Some sale barns on a bi-weekly schedule and may not have a sale each week.

FEEDER STEERS: Medium and Large 1

450-500 lbs.	441.00-444.50
500-600 lbs.	409.50-440.00
600-700 lbs.	348.00-402.00
700-800 lbs.	347.00-365.00
Load 875 lbs.	319.50

FEEDER HEIFERS: Medium and Large 1

500-600 lbs.	345.00-370.00
600-700 lbs.	336.25-342.85
Lo9ad 702 lbs.	342.85

SLAUGHTER BULLS: Yield Grade 1-2 1400-2100 lbs. high dressing 204.50-218.00

SLAUGHTER COWS: Breaking and Boning (70-85% lean) 162.00-173.00; high dressing ind 175.000; low dressing 145.50-157.00. Lean (85-90%) scarce

BRED COWS: Scarce

COW/CALF PAIRS: Scarce

SOUTHEAST MISSOURI WEEKLY SUMMARY

(Jackson and Farmington)

Receipts: 1,108 Week ago: 1,896 Year ago: 909
Compared to a week ago, feeders mixed 10.00 lower to 14.00 higher.
Slaughter cows and bulls sold steady.

FEEDER STEERS: Medium and Large 1

300-400 lbs. 407.00-460.00
400-500 lbs. 380.00-470.00
500-600 lbs. 347.00-407.00
600-700 lbs. 305.00-380.00
700-750 lbs. 290.00-333.00

FEEDER HEIFERS: Medium and Large 1

300-400 lbs. 400.00-440.00
400-500 lbs. 375.00-417.00
500-600 lbs. 300.00-372.00
600-700 lbs. 270.00-345.00
700-800 lbs. 255.00-309.00

SLAUGHTER BULLS: Yield
Grade 1-2 1185-2225 lbs 170.00-
182.00; high dressing 185.00-
220.00

SLAUGHTER COWS: Breaking
and Boning (75-85% lean) 140.00-
158.00; high dressing 150.50-
176.00. Lean (85-90% lean)
120.00-123.00

BRED COWS: Medium and Large
2 2-8 yrs 1015-1400 lbs 2nd and
3rd stage 2200.00-2500.00 per
head

COW & CALF PAIRS: Medium
and Large 2 2-8 yrs 1100-1250 lbs
150-300 lb calves 3200.00-
3800.00 per pair

EAST CENTRAL MISSOURI WEEKLY SUMMARY

(Cuba, Vienna)

Receipts: 819 Week Ago: 3,518 Year ago: 474
Compared to last week, feeder sold steady to 5.00 lower on a light test.
Slaughter cows sold steady.

FEEDER STEERS: Medium and Large 1

350-400 lbs. 460.00-490.00
400-500 lbs. 419.00-476.00
500-600 lbs. 370.00-417.00
600-700 lbs. 335.00-372.00
700-800 lbs. 318.00-333.00

FEEDER HEIFERS: Medium and Large 1

450-500 lbs. 387.50-402.50
500-600 lbs. 330.00-381.50
600-700 lbs. 312.00-320.00
700-800 lbs. 275.00-312.50

SLAUGHTER BULLS: Yield
Grade 1-2 1350-2425 lbs 185.00
-203.00; high dressing ind
210.00; low dressing 172.00-
175.00

SLAUGHTER COWS: Breaking
and Boning, (70-85% lean) 152.00-
165.50; high dressing 166.00-
170.50. Lean (85-90%) 145.50-
152.00

BRED COWS: Medium and
Large 1 2-8 yrs 1150-1350 2nd
and 3rd stage 3400.00-3550.00
per head.

COW & CALF PAIRS: Scarce

NORTHWEST MISSOURI WEEKLY SUMMARY

(Tina)

Receipts: 1,737 2 Weeks Ago: 1,227 Year Ago: 862
Compared to two weeks ago, steers under 550 lbs firm, spots as much
as 20.00 higher, limited comparisons over 600 lbs. Slaughter cows and
bulls higher undertone.

FEEDER STEERS: Medium and Large 1

400-500 lbs. 440.00-465.00
500-600 lbs. 413.00-444.00
600-700 lbs. 360.00-404.00
700-750 lbs. 350.00-372.00

FEEDER HEIFERS: Medium and Large 1

300-400 lbs. 417.50
400-500 lbs. 402.50-421.00
550-600 lbs. 382.50
600-700 lbs. 340.50-344.50

SLAUGHTER BULLS:
Yield Grade 1-2 1075-2205 lbs
184.50-199.00; high dressing
205.50-216.50.

SLAUGHTER COWS: Breaking
and Boning, (70-85% lean) 149.00-
166.00; high dressing 161.50-
176.50. Lean (85-90%) 127.00-
142.50.

BRED COWS: Scarce

COW/CALF PAIRS: Medium and
Large 1-2 5-8 yrs 1432 lbs with
150-300 lb calves 3985.00 per pair

AFTERNOON NATIONAL SLAUGHTER CATTLE REVIEW

So far for Friday, negotiated cash trade has been mostly inactive in the Texas Panhandle and Kansas. The last established market in the Texas Panhandle was Thursday at 230.00. The last established market in Kansas was Thursday from 230.00-231.00. Negotiated cash trade has been light on moderate demand in Nebraska and the Western Cornbelt. In Nebraska, compared to Thursday, dressed purchases were mostly steady at 380.00 on a light test. The last established live market in Nebraska was Thursday with live purchases at mostly 240.00. In the Western Cornbelt, compared to Thursday, live purchases were steady at 240.00. The last established dressed market in the Western Cornbelt was Thursday at 380.00.

Negotiated Cash Sales:					
Confirmed:	16,758	Week Ago:	35,665	Year Ago:	5,950
Week to date:	45,275	Week Ago:	57,816	Year Ago:	57,653

Live Basis	Steers	Heifers
Over 80% Choice	230.00-242.50 avg 239.63	240.00-242.00 avg 240.23
65-80% Choice	240.00-240.00 avg 240.00	230.00-230.00 avg 230.00
35-65% Choice	230.00-230.00 avg 230.00	-
0-35% Choice	-	-
Total All Grades	230.00-242.50 avg 238.86	230.00-242.00 avg 239.39
Dressed Basis		
Over 80% Choice	36.00-382.00 avg 379.83	380.00-382.00 avg 380.56
65-80% Choice	376.00-376.00 avg 376.00	376.00-376.00 avg 376.00
35-65% Choice	-	-
0-35% Choice	-	-
Total All Grades	376.00-382.00 avg 378.55	376.00-382.00 avg 380.18

All Beef Type Steers/Heifers	Head	Avg Wt	Price Range	Wtd Avg
Live FOB	8,902	1434.2	230.00-244.00	239.68
Live Del	4,137	1448.7	238.00-245.00	242.12
Dressed Del	3,572	923.3	376.00-382.00	379.25
Dressed FOB	147	927.1	380.00-380.00	380.00

WEEKLY COMMODITY FUTURES TRENDS

Compared to last week, Live Cattle 0.12 to 1.35 higher, Lean Hogs Aug 1.80 higher, other mixed 0.03 lower to 0.53 higher, Feeder Cattle 0.40 to 1.32 lower, except Jan 26 0.43 higher.

Daily Futures Closes

	Mon.	Tues.	Wed.	Thu.	Fri.
Cattle					
Aug	219.35	222.40	223.90	223.67	223.55
Oct	216.77	219.27	220.75	220.32	219.82
Dec	217.45	219.60	221.02	220.50	219.80
Feb	217.55	219.67	221.30	220.67	219.87
Apr	217.32	219.47	221.32	220.72	219.72
Lean Hogs					
Jul	106.70	106.85			
Aug	103.22	103.92	104.42	105.82	106.47
Oct	87.67	87.47	88.70	90.60	90.62
Dec	79.20	79.17	80.45	82.32	82.80
Feb	81.55	81.45	82.52	84.15	84.80
Fdr Cattle					
Aug	319.47	322.27	325.57	325.00	324.00
Sep	319.57	322.37	325.85	325.42	324.20
Oct	317.70	320.47	323.97	323.67	322.30
Nov	314.75	317.57	320.97	320.90	319.52
Jan	307.62	310.35	313.87	314.05	312.65
Milk					
Jul	17.37	17.35	17.40	17.44	17.45
Aug	17.43	17.22	17.46	17.72	17.77
Sep	18.17	18.01	18.18	18.27	18.23

WEEKLY COMMODITY GRAIN FUTURES TRENDS

Compared to last week, Soybeans 0.24 to 0.26 higher, Wheat 0.01 to 0.02 higher, Corn 0.13 to 0.16 higher, KC Wheat 0.03 to 0.05 higher, Soybean Meal 3.70 to 5.20 higher.

Daily Grain Futures Closes

	Mon.	Tues.	Wed.	Thu.	Fri.
Soybeans					
Jul	997	—	—	—	—
Aug	1001	995	1013 1/2	1021 1/2	1027 3/4
Sep	993 1/4	987 1/4	1005 3/4	1012	1021
Nov	1007	1001 3/4	1020 1/2	1026 1/2	1035 3/4
Jan	1024	1019	1037	1043 3/4	1052 3/4
Wheat					
Jul	534	—	—	—	—
Sep	541 1/2	538	541 1/4	533 1/2	546 1/4
Dec	562 1/4	558 3/4	561 3/4	554 1/4	567
Mar	580 1/2	577	579 3/4	572 1/2	585 1/4
May	591 1/4	588 1/4	591	583 1/2	596
Corn					
Jul	412 3/4	—	—	—	—
Sep	400	401 1/4	405 1/4	402	408 1/2
Dec	418	419 3/4	424	421	427 3/4
Mar	434 3/4	436 3/4	441	438 1/4	444 3/4
May	445	446 3/4	451	448 1/2	455
KC Wheat					
Jul	505 3/4	—	—	—	—
Sep	523	523 3/4	522 3/4	517 1/2	529
Dec	545 1/2	546	545 1/4	540	551 1/2
Mar	567	566 3/4	566	561 1/4	572 3/4
May	580 1/4	580	579 1/4	575	586 1/2
SB Meal					
Jul	265.20	—	—	—	—
Aug	267.70	265.30	268.40	268.70	274.00
Sep	271.80	269.50	272.70	273.10	278.40
Oct	275.40	273.20	276.60	276.80	282.10
Dec	281.70	279.50	283.50	283.50	288.80

MISSOURI GRAIN WEEKLY TRENDS

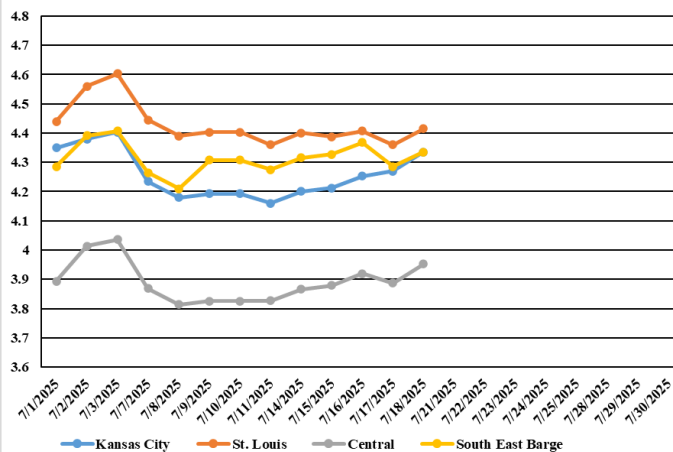
Compared to last week, Soybeans 0.22 to 0.28 lower, Wheat 0.09 to 0.01 higher, Corn 0.04 to 0.17 higher.

Area	#1 Soybeans	#2 Soft Wheat	#2 Corn	#2 Grain Sorghum
Kansas City				
Friday**	10.12-10.27	5.45	4.16	3.06
Monday	10.12-10.27	5.41	4.20	3.10
Tuesday	10.07-10.22	5.68	4.21	3.11
Wednesday	10.25-10.40	5.41	4.25	3.15
Thursday	10.31-10.46	5.28	4.27	3.12
Friday	10.40-10.55	5.41	4.33	3.18
St. Louis				
Friday**	10.37-10.40	5.17-5.28	4.36	—
Monday	10.34-10.37	5.13-5.24	4.40	—
Tuesday	10.31-10.33	5.10-5.11	4.38-4.39	—
Wednesday	10.48-10.51	5.13-5.14	4.39-4.42	—
Thursday	10.56	5.05-5.08	4.36	—
Friday	10.59-10.63	5.18-5.19	4.40-4.42	—
Central				
Friday**	9.77-9.79	4.90-5.30	3.76-3.86	—
Monday	9.72-9.76	4.86-5.26	3.80-3.90	—
Tuesday	9.70-9.87	4.83-5.23	3.81-3.91	—
Wednesday	9.88-10.05	4.86-5.26	3.85-3.95	—
Thursday	9.96-10.11	4.78-5.18	3.82-3.92	—
Friday	10.02-10.30	4.91-5.31	3.88-3.98	—
S.E. MO				
Friday**	9.81-10.34	—	4.24-4.31	—
Monday	10.01-10.31	—	4.28-4.35	—
Tuesday	9.95-10.25	—	4.29-4.36	—
Wednesday	10.13-10.43	—	4.33-4.40	—
Thursday	10.21-10.51	—	4.27-4.30	—
Friday	10.27	—	4.33	—

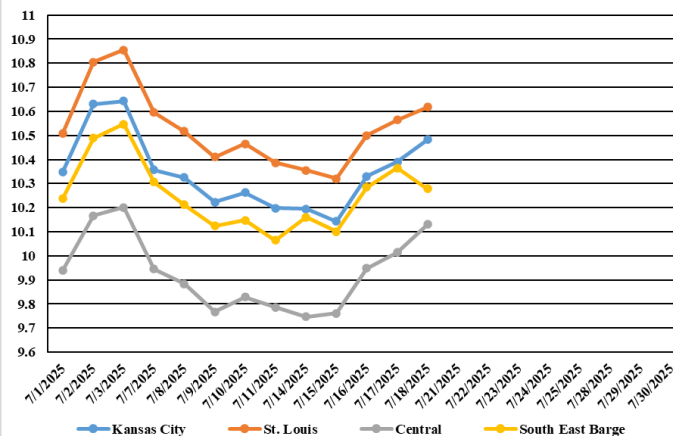
(PRICES PER BUSHEL) *NEW CROP **PREVIOUS WEEK'S PRICES
*Bids calculated using Kansas City, St. Louis, and St. Joseph bids

MONTHLY GRAIN CROP

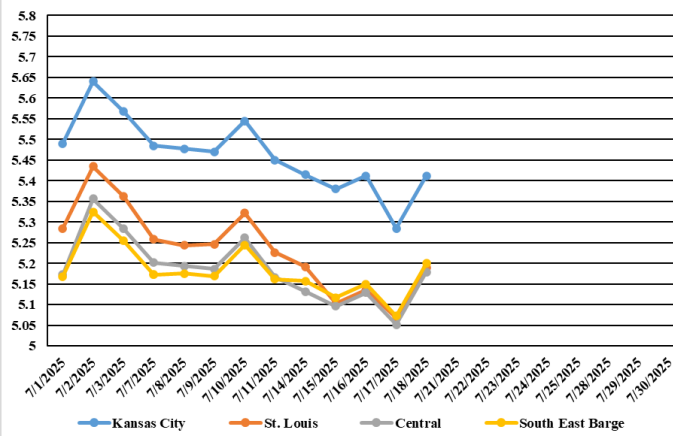
July 2025 Corn Bids



July 2025 Soybean Bids



July 2025 Wheat Bids



*Axis value ranges may be updated to reflect data points.
Only dates in which markets are trading and only current cash bids are represented.

WHOLESALE FEEDSTUFFS PRICES (DOLLARS PER TON-BULK BASIS)

Area	Cottonseed Meal 41%	Soybean Meal 46.5-48%	Corn Gluten Pellets 21%	Wheat Middlings
Kansas City	297.50	244.40	186.00	91.67
St. Louis	292.50	n/a	181.00	90.00

MISSOURI CROP PROGRESS REPORT 7/14/25

There were 4.6 days suitable for fieldwork in the week ending July 13, 2025. Topsoil moisture supply was rated 1 percent very short, 7 percent short, 79 percent adequate, and 13 percent surplus. Subsoil moisture supply was rated 1 percent very short, 10 percent short, 79 percent adequate, and 10 percent surplus. Corn silking reached 69 percent, compared to the 5-year average of 60 percent. Corn in the dough stage reached 20 percent, compared to the 5-year average of 12 percent. Corn condition was rated 0 percent very poor, 3 percent poor, 16 percent fair, 66 percent good, and 15 percent excellent. Soybeans blooming reached 42 percent, compared to the five-year average 36 percent. Soybeans setting pods reached 9 percent complete, compared to 15 percent for the 5-year average. Soybean condition was rated 3 percent poor, 17 percent fair, 72 percent good, and 8 percent excellent. Winter wheat harvested reached 97 percent, compared to the 5-year average of 96 percent. Pasture conditions was rated at 8 percent fair, 82 percent good, and 10 percent excellent.

	Week Ending			
	7/13/24	7/6/25	7/13/25	5 yr average
Corn Silking	74	46	69	60
Corn Dough	29	9	20	12
Soybeans Blooming	45	29	42	36
Soybeans Setting Pods	20	-	9	15
Winter Wheat Harvested	97	90	97	96
Alfalfa hay 2nd cutting	62	48	64	68
Other hay cut	88	79	85	88

MISSOURI WEEKLY SHEEP/GOAT AUCTION SUMMARY 7/19/25

Receipts: 1,496 Week Ago: 2,325 Last Year: 2,685

SHEEP: Feeder Lambs Medium and Large 1-2 35-40 lbs 230.00-255.00; 40-45 lbs 185.00-220.00. Hair Small and Medium 1-2 25-40 lbs 200.00-260.00; 40-50 lbs 220.00-265.00. Slaughter Lambs woolled and shorn Choice and Prime 1-3 50-95 lbs 202.50-230.00; 110-150 lbs 147.50-170.00. Hair Choice and Prime 1-2 45-75 lbs 190.00-250.00. Choice and Prime 1-3 50-100 lbs 200.00-247.50. Ewes Utility and Good 2 100-180 lbs 112.00-150.00. Hair Good 2-3 80-130 lbs 117.50-135.00. Utility and Good 1-3 80-165 lbs 107.50-112.50. Bucks Hair 1-2 115-185 lbs 122.50-147.50. Replacement Ewes Wool Medium and Large 1-2 2-4 yrs 100-165 lbs exp 175.00-230.00. Hair Small and Medium 1-2 1-4 yrs 65-125 lbs exp 145.00-167.50.

GOATS: Feeder Kids Selection 1 30-50 lbs 317.50-355.00. Selection 1-2 25-40 lbs 200.00-285.00. Selection 2 20-40 lbs 245.00-305.00; 40-50 lbs 225.00-300.00. Selection 3 35-45 lbs 174.00-202.50. Slaughter Kids Selection 1 40-60 lbs 300.00-317.00; 60-95 lbs 300.00-365.00. Selection 1-2 40-85 lbs 225.00-285.00. Selection 2 50-70 lbs 255.00-302.50. Nannies Selection 1-2 60-70 lbs 160.00-205.00; 70-90 lbs 127.50-175.00; 100-145 lbs 102.50-160.00. Bucks Selection 1-2 90-150 lbs 200.00-265.00; 160-170 lbs 225.00-285.00.

Explanatory Notes: Stage - Represents estimated lambing/kidding period (Open, Exp=exposed, Bred, Fall = Sep-Nov, Win = Dec-Feb, Spr = Mar-May, Sum=Jun-Aug; w/s = woolled and shorn; /hd= per head; /fam=per family
All price CWT unless otherwise noted.

MISSOURI DROUGHT MONITOR

Date	None	D0	D1	D2	D3	D4
7/15/25	90.65	9.35	0.0	0.0	0.0	0.0
7/08/25	90.22	8.87	0.91	0.0	0.0	0.0
7/16/24	98.80	1.20	0.0	0.0	0.0	0.0

Reflects percentage of Missouri impacted by drought. D0 Abnormally Dry; D1 Moderate Drought; D2 Severe Drought; D3 Extreme Drought; D4 Exceptional Drought

NATIONAL DIRECT DELIVERED FEEDER PIG REPORT

7/18/25 Receipts: 132,055 Week ago: 134,865 Year Ago: 105,022
Early weaned pigs steady. Feeder pigs mostly 6.00 lower.
Cash 91,880 head 47.00-65.00, weighted average 57.32
Formula 34,000 head 47.08-64.42, weighted average 55.37
Feeder pigs 40 pounds basis: Cash 6,175 head 64.00-87.00, weighted average 76.44

NATIONAL DAILY DIRECT PRIOR DAY HOG REPORTS 7/18/25

BARROWS AND GILTS (Carcass Basis): 1655 head
Base Carcass Price 101.00-113.00, weighted average 118.46

SOWS (Live Basis): 6513 head
300-500 lbs. 30.00-96.00
Over 500 lbs. 69.25-98.28

MISSOURI WEEKLY DIRECT SLAUGHTER CATTLE REPORT 7/18/25

Weekly Receipts: 320 Week ago: 200 Year ago: 280
Trading as of Friday morning, flat dressed prices mostly steady with grid dressed sales steady.

LIVE STEERS & HEIFERS: No sales reported
DRESSED STEERS & HEIFERS: 5 loads flat 380.00

GRADE AND EIGHT (Grid): 3 loads 384.00

Click here for the current [National Crop Progress](#)
Click here for the current [Missouri Crop Progress](#)
The current hay directory can be found at: [Hay Directory](#).

MISSOURI WEEKLY HAY SUMMARY 7/10/25

Special Note: Beginning 6/19/25, this report will be published biweekly. Any questions or concerns can be emailed to mymarketnews@usda.gov. As of the latest drought monitor just over 90% of the state is considered drought free. Pasture conditions are rated at 88% good to excellent. Neither of those two things would be considered common for Mid-July. Hay progress for hay other than alfalfa is running slightly behind average pace. Getting hay baled this year has been a challenge due to rains, although weather has been good for grass growth and much of the hay has been baled with a significant amount of maturity which has affected quality. Demand is light to moderate with most coming from equine interest. Most cattle producers not really in the market at this time. The supply of hay is moderate, and demand is light to moderate. The Missouri Department of Agriculture has a hay directory at <https://apps.mda.mo.gov/haydirectory> or visit the University of Missouri Extension feed stuff finder at <https://feedstufffinder.org>
Alfalfa - Supreme 250.00-300.00, small square 10.00-15.00 per bale
Alfalfa - Premium 175.00-225.00
Alfalfa - Good 150.00-175.00, small square 6.00-10.00 per bale
Alfalfa - Fair 125.00-150.00
Mixed Grass—Premium 150.00-200.00
Mixed grass - Good/Premium 100.00-150.00
Mixed grass-Fair/Good 75.00-125.00, small square 3.00-7.00 per bale
Mixed grass - Fair 25.00-50.00 per large round bale
Wheat straw - 4.00-7.00 per small square bale

Please Note: The above volumes (tonnage, acres, and bales) listed are for confirmed trades only, it does not include estimated volume (tonnage) for bids or offers to the trade. List your hay for sale at: [Hay Listing Online Form](#). Explanation of Hay Quality Guidelines: [Hay Quality Designation Guidelines](#). Glossary of Terms: [Livestock, Poultry, & Grain Hay Terms](#)