

Weekly Market Summary

Published by:
Missouri Department of Agriculture
Ag Business Development Division
Market News Program



Chris Chinn, Director
Jill Wood, Division Director
Tony Hancock, Editor
[agmarketnews.mo.gov](http://www.ams.usda.gov/marketnews.htm)
<http://www.ams.usda.gov/marketnews.htm>

Michael Kehoe, Governor

Volume XLV, Number 30 ♦ P.O. Box 630, Jefferson City, MO 65102 ♦ (573) 751-4211 ♦ Mon, July 28, 2025

MISSOURI WEEKLY FEEDER CATTLE WEIGHTED AVERAGE REPORT

Feeder Cattle Receipts: 12,484 Week ago: 28,733 Year ago: 20,280
Steers and Heifers Medium and Large 1—Weighted average weights and prices

STEERS: Medium and Large 1

332 lbs.	480.89	527 lbs.	410.36	715 lbs.	347.59	915 lbs.	315.04
379 lbs.	472.68	577 lbs.	395.79	769 lbs.	345.40	989 lbs.	307.00
429 lbs.	447.23	623 lbs.	386.10	824 lbs.	327.95	1030 lbs.	303.75
477 lbs.	418.73	672 lbs.	366.16	868 lbs.	320.81		

HEIFERS: Medium and Large 1

326 lbs.	439.11	526 lbs.	369.74	728 lbs.	320.39
374 lbs.	415.01	569 lbs.	356.33	761 lbs.	313.25
423 lbs.	405.86	617 lbs.	340.59	835 lbs.	297.83
477 lbs.	385.79	671 lbs.	338.30		

MISSOURI STEER (HEIFER) STOCKER FORMULA 7/21/2025

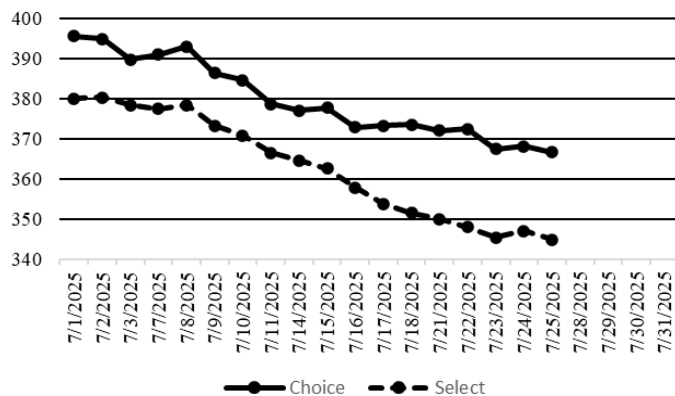
Monday's Missouri Stocker formula consists of **3671 (3710)** head with a weighted average weight of **552.98 (538.12)** lbs. and a price value of **388.43 (361.94)**, 8.34 lower (4.52 higher) than a week ago.

This a rolling seven day calculated weighted value which combines all Feeder Steers reported by MDA/USDA Market News Service weighing from 400-649 lbs. in the Medium and Large 1 and Medium and Large 1-2 frame and muscle classifications, including all comment cattle except Brahman X. Heifer values are in parentheses.

NATIONAL BOXED BEEF CUTOUT VALUES

DATE	CHOICE	SELECT	TOTAL LOADS
7/21/25	372.07	350.05	75
7/22/25	372.50	347.94	136
7/23/25	367.52	345.39	164
7/24/25	368.09	347.00	129
7/25/25	366.68	344.87	105
5 Day Simple Average	369.37	347.05	

Boxed Beef Cuts July 2025



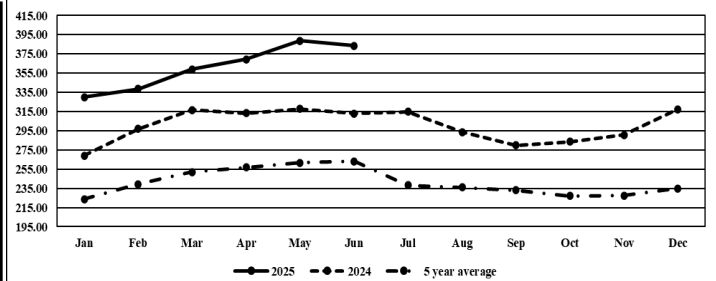
*Axis value ranges may be updated to reflect data points.

WEEKLY LIVESTOCK SLAUGHTER 7/25/25

	CATTLE	HOGS	SHEEP
Week to Date:	549,000	2,338,000	33,000
Last Week:	563,000	2,342,000	33,000
Last Year:	605,176	2,438,899	34,352

The Weekly Market Summary, as well as historical summaries, are available on our website <https://agmarketnews.mo.gov/summaries>
Market News Hotline: 1-573-522-9244
Check out the latest updates on our YouTube Channel: [MDA Market News](https://www.youtube.com/channel/UCM4M4M4M4M4M4M4M4M4M4M4)

Missouri Stocker Formula - Steers



*Graph is updated the first Monday of each month. Axis value ranges may be updated to reflect data points.

MISSOURI WEEKLY CATTLE AUCTION SUMMARY

Total Receipts: 14,253 Week Ago: 21,924 Year Ago: 23,952

Compared to last week, feeder steers sold steady to 5.00 higher, with spots of 10.00 higher, heifers were mixed from 5.00 lower to 5.00 higher. Supply was very light this week as extreme heat limited cattle movement. Unweaned calves or those with fescue hair are not very desirable as they become very stressed in the heat. Yearlings found very good demand. Buyers are said to be wanting and needing cattle, but limited offerings has made it hard to put together loads and fill orders. Friday saw the release of two cattle reports the monthly cattle on feed and the semi-annual inventory. The cattle on feed report was extremely bullish on feed numbers were 98.4 percent of last year, marketings were 95.5 and placements were 92.1 percent which was 6 percent below the average pre-report estimate. Two of several factors playing into this was the missing numbers of Mexican imports and the fact that grass is abundant in most areas and many calves are likely to be spending more days on pasture and adding weight on grass before coming to the feedlots at heavier weights. The other report was the semi-annual inventory report which hasn't been released for two years so comparisons were a bit more difficult to make this report is also much more limited in data than the Jan. version. Most numbers were slightly above pre-report estimates but still below two years ago. The general take away is that producers are keeping cows for another calf rather than culling which is also supported by the low slaughter thus far this year. There were mixed views if any heifer retention is really taking place, but most agreed if so, it was regional and likely limited so far. Stick out sales this week included Unionville Livestock Market sold 83 head of 602 lb. steers for 416.25 and 5 loads of 864-888 lb. steers that sold at 326.75-328.75. Callaway Livestock Center sold a load of 758 lb. steers for 368.75. A load of 824 lb. steers at Kingsville Livestock Auction sold for 334.75. Joplin Regional Stockyards sold a load of 909 lb. steers for 317.00 and two loads of 1035 lb. steers for 305.50 as well as 28 head of 545 lb. heifers at 380.00. F and T Livestock Market sold 49 head of 734 lb. heifers for 344.75. Boxed beef cutout values continued to decline, choice closed on Friday at 366.68, down 6.87 and Select closed at 344.87, down 6.67 compared to last Friday. The choice cutout has now lost near 30.00 in July and select has lost near 40.00 this month. Negotiated feedlot sales as of the 2:00 cutoff time on Friday afternoons report totaled just under 20K for the week. Sales were very slow to develop this week with most waiting to see the Friday afternoon COF and Inventory report. Several more sales likely took place after the 2:00 cutoff time. Prices were mostly steady. Live trade in the south mostly 230.00-231.00, and mostly 240.00 in the north. Dressed sales mostly at 380.00. The Missouri Stocker formula consists of 2145 head with a weighted average weight of 557.13 lbs. and a price value of 392.67, 4.24 higher than last week. The steer/heifer spread is 34.58.

SOUTHWEST MISSOURI WEEKLY SUMMARY

(Joplin and Springfield)

Receipts: 6,860 Week ago: 9,029 Year Ago: 7,535

Compared to last week, feeder steers sold steady to 10.00 higher, heifers sold steady to 3.00 higher. Slaughter cows sold mixed 2.00 lower to 10.00 higher. Bulls sold 2.00 lower to 4.00 higher.

FEEDER STEERS: Medium and Large 1

300-400 lbs.	468.00-540.00
400-500 lbs.	395.00-455.00
500-600 lbs.	360.00-430.00
600-700 lbs.	340.00-397.00
700-800 lbs.	320.00-359.50
800-900 lbs.	313.50-328.00
900-1000 lbs.	307.00-317.00
125 hd 1035 lbs.	305.50

FEEDER HOLSTEIN STEERS Large 3

400-500 lbs.	300.00-305.00
500-600 lbs.	260.00-295.00
700-750 lbs.	211.00-213.00
800-900 lbs.	250.00-276.00
950-1000 lbs.	253.00

BRED COWS: Medium and Large 1 2-8 yrs 1000-1525 lbs 2nd and 3rd stage 2700.00-3600.00; 875-1025 lbs 1st stage 2400.00-2550.00 per head

BRED HEIFERS: Medium and Large 1 2-4 yrs few 900-1000 lbs 2nd and 3rd stage 2900.00.

FEEDER HEIFERS: Medium and Large 1

300-400 lbs.	450.00-455.00
400-500 lbs.	360.00-427.00
500-600 lbs.	330.00-380.00
600-700 lbs.	318.00-348.00
700-800 lbs.	310.00-325.00
800-900 lbs.	290.00-299.00

SLAUGHTER COWS: Breaking and Boning (70-85% lean) 147.00-174.00; high dressing 162.00-186.00; low dressing 125.00-153.00. Lean (85-90%) 134.00-153.00.

SLAUGHTER BULLS: Yield Grade 1-2 1220-2300 lbs. 179.00-206.00; high dressing 199.00-220.00; low dressing 166.00-183.00.

COW & CALF PAIRS: Medium and Large 1 few 2-8 yrs 1075-1325 lbs 150-300 lb calves 3600.00-4200.00 per pair

SOUTH CENTRAL MISSOURI WEEKLY SUMMARY

(West Plains, Phillipsburg)

Receipts: 1,758 Week ago: 3,773 Year Ago: 4,865

Compared to last week steers steady to 9.00 higher, heifers mixed from 10.00 lower to 9.00 higher. Slaughter cows steady to weak. Bulls steady to 8.00 lower.

FEEDER STEERS: Medium and Large 1

400-500 lbs.	420.00-455.00
500-600 lbs.	385.00-417.50
600-700 lbs.	350.00-400.00
700-800 lbs.	332.50-342.00

FEEDER HEIFERS: Medium and Large 1

300-400 lbs.	385.00-427.00
400-500 lbs.	370.00-412.50
500-600 lbs.	335.00-382.50
600-700 lbs.	340.00-350.00
700-800 lbs.	310.00-313.00

FEEDER HOLSTEIN STEERS: Large 3

Scarce

Scarce

SLAUGHTER COWS: Breaking and Boning (70-85% lean) 154.00-165.00, high dressing 162.50-168.00; low dressing 133.00-153.00. Lean (85-90%) 128.50-153.00

SLAUGHTER BULLS: Yield Grade 1-2 1175-1975 lbs. 179.00-195.00; high dressing 200.00-214.00; low dressing 130.00-174.50

BRED COWS: Medium and Large 1 2-8 yrs 1150-1300 lbs 2nd and 3rd stage 3200.00-3350.00, 1st stage 2625.00 per head Medium and Large 1-2 2-8 yrs 1150-1400 2nd and 3rd stage 2400.00-3000.00 per head.

COW & CALF PAIRS: Medium 1-2 2-8 yrs 875-1025 lbs calves 150-300 lbs 3300.00-3350.00, few rebred 4050.00 per pair

WEST CENTRAL MISSOURI WEEKLY SUMMARY

(Kingsville, Windsor, Butler)

Receipts: 829 Week ago: 1,775 Year ago: 2,877

Compared to last week, mainly yearling steers and heifers sold 3.00 to 8.00 higher, with very light supply on the lighter weight calves, no comparisons made. Slaughter cows sold 1.00 to 3.00 higher.

FEEDER STEERS: Medium and Large 1

500-600 lbs.	397.50-437.00
600-700 lbs.	362.00-407.50
700-800 lbs.	336.00-369.00
800-900 lbs.	325.50-334.75

FEEDER HEIFERS: Medium and Large 1

500-600 lbs.	368.00-401.00
600-650 lbs.	332.50-362.50
700-750 lbs.	319.00-339.00

SLAUGHTER BULLS: Yield Grade 1-2 1225-2325 lbs. 191.00-212.00; high dressing 217.00, low dressing 165.00-171.00

SLAUGHTER COWS: Breaking and Boning (70-85% lean) 148.00-171.00, high dressing 169.00-190.00. Lean (85-90%) 124.00-149.00

BRED COWS: Medium and Large 1-2 2-8 yrs 1150-1200 lbs few 2975.00-3100.00. per head

COW & CALF PAIRS: Medium and Large 1-2 2-8 yrs 1200-1500 lbs calves over 300 lbs few rebred 3800.00-3975.00 per pair

NORTHEAST MISSOURI WEEKLY SUMMARY

(Bowling Green, Kingdom City, Palmyra)

Receipts: 2,613 Week ago: 2,293 Year ago: 3,930

Compared to last week feeders sold steady to firm with some pot loads of yearlings sharply higher. Slaughter cows steady to firm.

FEEDER STEERS: Medium and Large 1

400-500 lbs.	437.50-462.00
500-600 lbs.	380.00-416.00
600-700 lbs.	355.00-396.00
700-800 lbs.	319.50-361.00
Load 885 lbs.	315.50

FEEDER HEIFERS: Medium and Large 1

300-400 lbs.	447.00-463.00
400-500 lbs.	382.00-430.00
500-600 lbs.	341.00-397.00
600-700 lbs.	321.50-358.00
700-800 lbs.	310.00-344.75
32 hd 843 lbs.	299.50

SLAUGHTER BULLS: Yield Grade 1-2 1350-2400 lbs. 186.00-215.00; high dressing 209.00-221.00, low dressing 148.00-180.00.

SLAUGHTER COWS: Breaking and Boning, (70-85% lean) 164.00-176.00; high dressing 175.00-188.00. Lean (85-90%) 145.00-166.00.

SLAUGHTER STEERS: Choice 2 -3 232.00-239.00 Select and Choice 1-3 230.00-231.50

SLAUGHTER HEIFERS: Choice 2-3 233.00-240.00

BRED COWS: Scarce

COW CALF PAIRS: Scarce

NORTH CENTRAL MISSOURI WEEKLY SUMMARY

(Macon, Unionville, Green City, New Cambria)

Receipts: 1,024 Week ago: 1,390 Year ago: 1,264

*Some sale barns on a bi-weekly schedule and may not have a sale each week. Compared to the previous test load lots of yearlings sold 6.00 to 7.00 higher. Slaughter cows sold steady to 2.00 higher.

FEEDER STEERS: Medium and Large 1

450-450 lbs.	432.00-438.00
500-600 lbs.	395.00-441.00
600-700 lbs.	370.50-425.00
800-900 lbs.	325.00-330.25
29 hd 1010 lbs.	296.00

FEEDER HEIFERS: Medium and Large 1

16 hd 565 lbs.	394.00
600-700 lbs.	365.00-383.00
12 hd 716 lbs.	339.75

SLAUGHTER BULLS: Yield Grade 1-2 1500-2250 lbs. 193.00-207.00

SLAUGHTER COWS: Breaking and Boning (70-85% lean) 148.00-171.00; low dressing 145.00-148.50. Lean (85-90%) 144.00-149.50

BRED COWS: Scarce

COW/CALF PAIRS: Scarce

SOUTHEAST MISSOURI WEEKLY SUMMARY

(Jackson and Farmington)

Receipts: 765 Week ago: 1,108 Year ago: 755
Compared to last week, feeders sold steady to 12.00 higher. Slaughter cows sold steady.

FEEDER STEERS: Medium and Large 1

300-400 lbs. 420.00-482.00
400-500 lbs. 405.00-475.00
500-600 lbs. 365.00-412.00
600-700 lbs. 335.00-371.00
700-800 lbs. 310.00-332.50

FEEDER HEIFERS: Medium and Large 1

300-400 lbs. 380.00-432.00
400-500 lbs. 370.00-415.00
500-600 lbs. 300.00-375.00
600-700 lbs. 275.00-345.00

SLAUGHTER BULLS: Yield
Grade 1-2 1125-2175 lbs 175.00-
180.00, high dressing 180.00-
209.00

SLAUGHTER COWS: Breaking
and Boning (75-85% lean) 140.00-
157.00; high dressing 155.50-
180.00. Lean (85-90% lean) scarce

BRED COWS: Medium and Large
2 2-8 yrs 1150-1275 lbs 2nd and
3rd stage 2250.00-2950.00 per
head

COW & CALF PAIRS: Medium
and Large 1-2 2-8 yrs 1025-1450
lbs 150-300 lb calves 2500.00-
3450.00 per pair

EAST CENTRAL MISSOURI WEEKLY SUMMARY

(Cuba, Vienna)

Receipts: 404 Week Ago: 819 Year ago: 2,726
Feeder supply not sufficient to establish a market trend

FEEDER STEERS: Medium and Large 1

350-400 lbs. 468.00-492.00
400-500 lbs. 420.00-481.00
500-600 lbs. 400.00-417.00
600-650 lbs. 368.00-374.50
700-725 lbs. 335.75-339.25

FEEDER HEIFERS: Medium and Large 1

450-500 lbs. 361.00-418.00
500-600 lbs. 333.50-384.50
650-700 lbs. 315.00

SLAUGHTER BULLS: Yield
Grade 1-2 1665 lbs ind 189.00

SLAUGHTER COWS: Breaking
and Boning, (70-85% lean) Scarce.
Lean (85-90%) 134.50-149.00

BRED COWS: Medium and
Large 1-2 2-4 yrs 950-1350 3rd
stage 2650.00-3400.00 per head.

COW & CALF PAIRS: Scarce

NORTHWEST MISSOURI WEEKLY SUMMARY

(Tina) (w/c 7/19/25)

Receipts: 1,737 2 Weeks Ago: 1,227 Year Ago: 862
Compared to two weeks ago, steers under 550 lbs firm, spots as much
as 20.00 higher, limited comparisons over 600 lbs. Slaughter cows and
bulls higher undertone.

FEEDER STEERS: Medium and Large 1

400-500 lbs. 440.00-465.00
500-600 lbs. 413.00-444.00
600-700 lbs. 360.00-404.00
700-750 lbs. 350.00-372.00

FEEDER HEIFERS: Medium and Large 1

300-400 lbs. 417.50
400-500 lbs. 402.50-421.00
550-600 lbs. 382.50
600-700 lbs. 340.50-344.50

SLAUGHTER BULLS:
Yield Grade 1-2 1075-2205 lbs
184.50-199.00; high dressing
205.50-216.50.

SLAUGHTER COWS: Breaking
and Boning, (70-85% lean) 149.00-
166.00; high dressing 161.50-
176.50. Lean (85-90%) 127.00-
142.50.

BRED COWS: Scarce

COW/CALF PAIRS: Medium and
Large 1-2 5-8 yrs 1432 lbs with
150-300 lb calves 3985.00 per pair

AFTERNOON NATIONAL SLAUGHTER CATTLE REVIEW

Thus far Friday trade was limited on moderate demand in the South-
ern Plains. A few live purchases traded from 230.00-237.50 in Kan-
sas, however not enough purchases in the Southern Plains for an ade-
quate market test. The last established market in the Texas Panhandle
was last week at 230.00. Last week in Kansas live purchases traded
from 230.00-231.00. Trade was light on moderate in Nebraska and the
Western Cornbelt. In Nebraska a few early purchases traded from
240.00-242.00 and from 378.00-380.00 respectfully, however not
enough for an adequate market test. The last established market in
Nebraska was last week with live purchases at 240.00 and dressed
purchases at 380.00. In the Western Cornbelt early live purchases
traded steady at 240.00. Early dressed purchases traded from 375.00-
380.00, not enough for an adequate market test. The latest established
dressed market in the Western Cornbelt was last week at 380.00.

Negotiated Cash Sales:

Confirmed:	14,630	Week Ago:	16,758	Year Ago:	27,366
Week to date:	19,808	Week Ago:	45,275	Year Ago:	52,135

<u>Live Basis</u>	<u>Steers</u>	<u>Heifers</u>
Over 80% Choice	230.00-242.00 avg 239.18	238.00-242.00 avg 240.27
65-80% Choice	230.00-240.00 avg 235.27	230.00-230.00 avg 230.00
35-65% Choice	226.00-226.00 avg 226.00	-
0-35% Choice	-	-
Total All Grades	226.00-242.00 avg 238.79	230.00-242.00 avg 238.57
Dressed Basis		
Over 80% Choice	375.00-382.00 avg 378.64	375.00-380.00 avg 378.13
65-80% Choice	380.00-380.00 avg 380.00	380.00-380.00 avg 380.00
35-65% Choice	-	-
0-35% Choice	-	-
Total All Grades	375.00-382.00 avg 378.72	375.00-380.00 avg 378.50

<u>All Beef Type Steers/Heifers</u>	<u>Head</u>	<u>Avg Wt</u>	<u>Price Range</u>	<u>Wtd Avg</u>
Live FOB	8927	1453.4	226.00-242.00	238.80
Live Del	80	1375.0	239.00-240.00	239.50
Dressed Del	5475	954.8	375.00-382.00	378.74
Dressed FOB	108	917.9	375.00-375.00	375.00

WEEKLY COMMODITY FUTURES TRENDS

Compared to last week, Live Cattle 2.92 to 4.38 higher, Lean Hogs Aug
2.23 higher, others 0.02 to 0.55 lower, Feeder Cattle 7.37 to 8.97 high-
er.

Daily Futures Closes

	Mon.	Tues.	Wed.	Thu.	Fri.
Cattle					
Aug	225.22	224.97	227.02	225.80	226.47
Oct	221.62	221.12	223.50	222.15	223.15
Dec	221.75	221.65	223.90	222.65	223.47
Feb	221.72	221.97	224.20	223.07	223.82
Apr	221.60	222.10	224.30	223.35	224.10
Lean Hogs					
Aug	107.35	107.75	108.47	108.20	108.70
Oct	90.97	90.50	90.90	91.10	90.60
Dec	82.95	82.85	82.57	82.92	82.25
Feb	85.07	85.22	85.05	85.32	84.60
Apr	87.97	88.32	88.22	88.40	87.77
Fdr Cattle					
Aug	327.60	328.27	331.52	328.90	331.37
Sep	327.70	328.57	331.90	329.65	332.20
Oct	325.97	326.87	330.65	328.35	331.00
Nov	323.17	324.22	328.22	325.82	328.45
Jan	316.35	317.60	321.87	319.45	321.62
Milk					
Jul	17.42	17.40	17.39	17.33	17.33
Aug	17.63	17.57	17.18	17.26	17.23
Sep	18.09	18.05	17.39	17.49	17.55

WEEKLY COMMODITY GRAIN FUTURES TRENDS

Compared to last week, Soybeans 0.12 to 0.29 lower, Wheat 0.08 to 0.09 lower, Corn 0.08 to 0.09 lower, KC Wheat 0.02 to 0.05 lower, Soybean Meal 6.20 to 7.30 lower.

Daily Grain Futures Closes

	Mon.	Tues.	Wed.	Thu.	Fri.
Soybeans					
Aug	1015	1010 1/4	1005 3/4	1004 1/4	998 3/4
Sep	1010 1/2	1008	1005	1005 3/4	1002
Nov	1026	1025 1/2	1022 3/4	1024 1/4	1021
Jan	1043 3/4	1043	1040 1/2	1042	1038 3/4
Mar	1057 3/4	1056 3/4	1054 3/4	1057	1051 1/4
Wheat					
Sep	542 1/4	549 1/2	540 1/2	541 1/2	538 1/4
Dec	563 1/4	569 1/2	561 1/4	561 1/4	558 1/4
Mar	581 3/4	587 1/2	579 3/4	579 3/4	576 3/4
May	592 3/4	598	590 1/2	590 3/4	588 1/4
Jul	599 1/4	604	597	597 1/2	595
Corn					
Sep	403 3/4	399 1/4	398 1/2	401 3/4	399 1/2
Dec	422 1/4	418	417 1/2	420 3/4	419
Mar	439 3/4	435 3/4	434 3/4	438 1/4	436 1/2
May	450 1/4	446 1/2	445 1/4	448 1/2	446 3/4
Jul	457 1/4	456 1/2	452	455 1/4	453
KC Wheat					
Sep	505 3/4	533 1/4	523 1/2	528 1/2	526 1/2
Dec	525 3/4	555	546	549 3/4	547 3/4
Mar	548 1/4	575 1/4	566 3/4	570	568 1/4
May	569 1/2	588 1/4	580 1/4	583 1/4	581 3/4
Jul	593 1/4	598	590	592 3/4	591 1/2
SB Meal					
Aug	270.50	273.80	272.00	269.70	267.80
Sep	274.80	277.90	276.20	273.90	272.20
Oct	278.40	281.00	279.50	277.00	275.50
Dec	284.80	286.80	285.60	283.10	281.60
Jan	288.50	290.30	289.30	286.80	285.20

MISSOURI GRAIN WEEKLY TRENDS

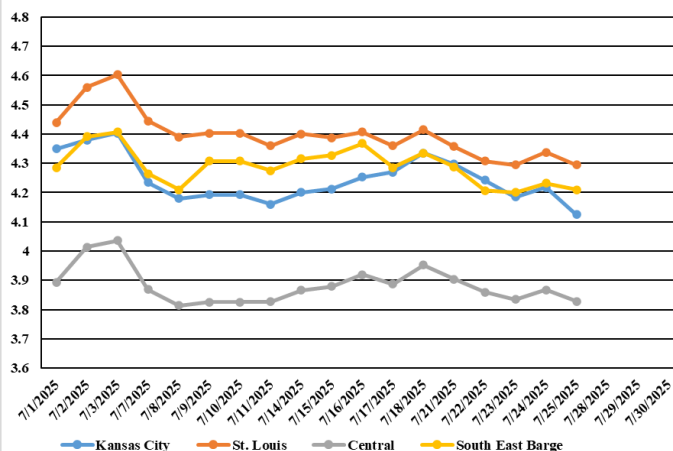
Compared to last week, Soybeans 0.14 to 0.42 lower, Wheat 0.06 to 0.18 lower, Corn 0.11 to 0.21 lower, Sorghum no trend due to lack of bids.

Area	#1 Soybeans	#2 Soft Wheat	#2 Corn	#2 Grain Sorghum
Kansas City				
Friday**	10.40-10.55	5.41	4.33	3.18
Monday	10.31-10.46	5.32	4.28	3.13
Tuesday	10.30-10.45	5.39	4.24	3.09
Wednesday	10.22-10.42	5.30	4.18	3.08
Thursday	10.24-10.44	5.26	4.21	3.11
Friday	10.21-10.41	5.23	4.12	—
St. Louis				
Friday**	10.59-10.63	5.18-5.19	4.40-4.42	—
Monday	10.45-10.47	5.14-5.15	4.34-4.36	—
Tuesday	10.40-10.42	5.21-5.22	4.30-4.31	—
Wednesday	10.27-10.35	5.10-5.13	4.28-4.30	—
Thursday	10.26	5.12-5.14	4.33	—
Friday	10.20-10.21	5.11-5.13	4.29	—
Central				
Friday**	10.02-10.30	4.91-5.31	3.88-3.98	—
Monday	9.90-10.21	4.87-5.27	3.83-3.93	—
Tuesday	9.85-10.20	4.94-5.34	3.79-3.89	—
Wednesday	9.80-10.17	4.85-5.25	3.78-3.88	—
Thursday	9.79-10.19	4.86-5.26	3.81-3.91	—
Friday	9.73-10.11	4.83-5.23	3.79-3.84	—
S.E. MO				
Friday**	10.27	—	4.33	—
Monday	10.15	—	4.28	—
Tuesday	10.10	—	4.17-4.24	—
Wednesday	10.05	—	4.16-4.23	—
Thursday	10.04	—	4.19-4.26	—
Friday	9.98	—	4.17-4.24	—

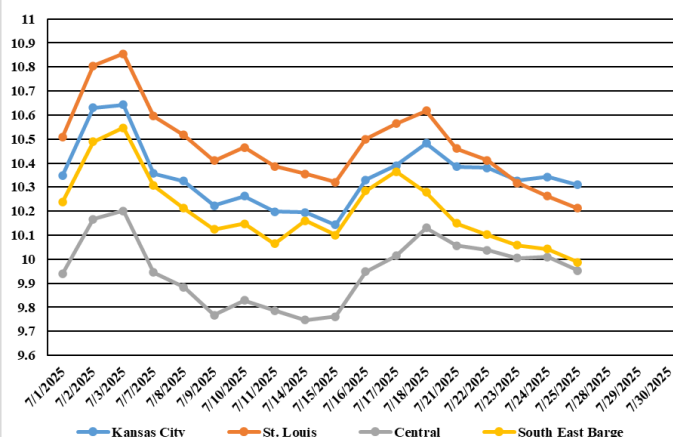
(PRICES PER BUSHEL) *NEW CROP **PREVIOUS WEEK'S PRICES
*Bids calculated using Kansas City, St. Louis, and St. Joseph bids

MONTHLY GRAIN CROP

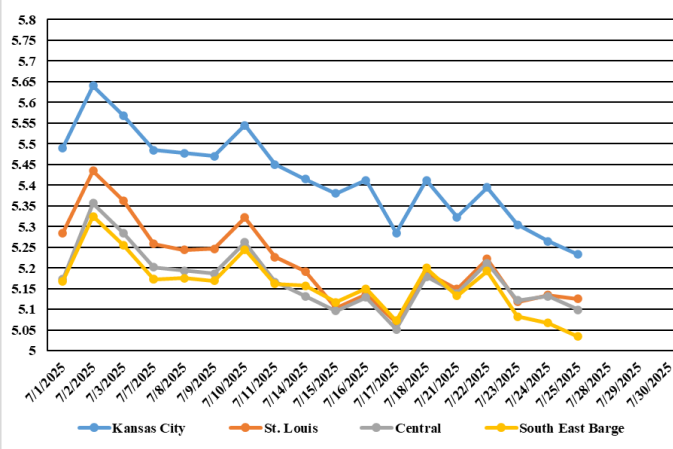
July 2025 Corn Bids



July 2025 Soybean Bids



July 2025 Wheat Bids



*Axis value ranges may be updated to reflect data points.
Only dates in which markets are trading and only current cash bids are represented.

WHOLESALE FEEDSTUFFS PRICES (DOLLARS PER TON-BULK BASIS)

Area	<u>Cottonseed Meal 41%</u>	<u>Soybean Meal 46.5-48%</u>	<u>Corn Gluten Pellets 21%</u>	<u>Wheat Middlings</u>
Kansas City	297.50	244.40	186.00	91.67
St. Louis	292.50	n/a	181.00	90.00

MISSOURI CROP PROGRESS REPORT 7/20/25

There were 4.1 days suitable for fieldwork in the week ending July 20, 2025. Topsoil moisture supply was rated 0 percent very short, 7 percent short, 76 percent adequate, and 17 percent surplus. Subsoil moisture supply was rated 1 percent very short, 9 percent short, 81 percent adequate, and 9 percent surplus. Corn silking reached 86 percent, compared to the 5-year average of 79 percent. Corn in the dough stage reached 35 percent, compared to the 5-year average of 31 percent. Corn condition was rated 0 percent very poor, 4 percent poor, 17 percent fair, 62 percent good, and 17 percent excellent. Soybeans blooming reached 57 percent, compared to the five-year average 50 percent. Soybeans setting pods reached 16 percent complete, compared to 31 percent for the 5-year average. Soybean condition was rated 4 percent poor, 19 percent fair, 67 percent good, and 10 percent excellent. Winter wheat harvested reached 99 percent, compared to the 5-year average of 99 percent. Pasture conditions was rated at 1 percent poor, 9 percent fair, 77 percent good, and 13 percent excellent.

	Week Ending			
	7/20/24	7/13/25	7/20/25	5 yr average
Corn Silking	85	69	86	79
Corn Dough	48	20	35	31
Soybeans Blooming	56	42	57	50
Soybeans Setting Pods	25	9	16	31
Winter Wheat Harvested	99	97	99	99
Alfalfa hay 2nd cutting	78	64	70	80
Alfalfa hay 3rd cutting	11	3	10	10
Other hay cut	92	85	88	91

Cattle Inventory

July 1 Cattle Inventory Down 1 Percent All cattle and calves in the United States on July 1, 2025 totaled 94.2 million head, 1 percent below the 95.4 million head on July 1, 2023. **All cows and heifers that have calved** totaled 38.1 million head, 1 percent below the 38.4 million head on July 1, 2023. Beef cows, at 28.7 million head, are down 1 percent from two years ago. Milk cows, at 9.45 million head, are up 1 percent from 2023. **All heifers 500 pounds and over** on July 1, 2025 totaled 14.6 million head, 2 percent below the 14.9 million head on July 1, 2023. Beef replacement heifers, at 3.70 million head, are down 3 percent from two years earlier. Milk replacement heifers, at 3.50 million head, are unchanged from 2023. Other heifers, at 7.40 million head, are 3 percent below two years ago. **Steers 500 pounds and over** on July 1, 2025 totaled 13.8 million head, down 1 percent from July 1, 2023. **Bulls 500 pounds and over** on July 1, 2025 totaled 1.90 million head, unchanged from two years earlier. **Calves under 500 pounds** on July 1, 2025 totaled 25.8 million head, down 2 percent from 2023. **Cattle and calves on feed** for the slaughter market in the United States for all feedlots totaled 13.0 million head on July 1, 2025, down 1 percent from two years earlier. Cattle on feed in feedlots with capacity of 1,000 or more head accounted for 85.6 percent of the total cattle on feed on July 1, 2025, down slightly from two years ago. The total of calves under 500 pounds and other heifers and steers over 500 pounds (outside feedlots), at 34.0 million head, is down 2 percent from 07/01/23

MISSOURI WEEKLY HAY SUMMARY 7/24/25

As of the latest drought monitor the entire state is now considered 100 percent drought free. Significant improvement was noted for just about all the states in the Midwest this week. Rains, which if one was under specific clouds were excessive at times, have been plentiful for July thus far has the state looking much more like Mid-May rather than late July. Pastures in the state continue to be some of the highest rated in the nation and much better than those in neighboring states. Hay movement has been slow, prices are steady to week, supplies are heavy, and demand is light. The Missouri Department of Agriculture has a hay directory at <https://apps.mda.mo.gov/haydirectory> or visit the University of Missouri Extension feed stuff finder at <https://feedstufffinder.org>

Alfalfa - Supreme 250.00-300.00, small square 10.00-15.00 per bale
Alfalfa - Premium 175.00-225.00
Alfalfa - Good 150.00-175.00, small square 6.00-10.00 per bale
Alfalfa - Fair 125.00-150.00
Mixed Grass—Premium 150.00-200.00
Mixed grass - Good/Premium 100.00-150.00
Mixed grass-Fair/Good 75.00-125.00, small square 3.00-7.00 per bale
Mixed grass - Fair 25.00-50.00 per large round bale

Please Note: The above volumes (tonnage, acres, and bales) listed are for confirmed trades only, it does not include estimated volume (tonnage) for bids or offers to the trade. List your hay for sale at: [Hay Listing Online Form](#). Explanation of Hay Quality Guidelines: [Hay Quality Designation Guidelines](#). Glossary of Terms: [Livestock, Poultry, & Grain Hay Terms](#)

MISSOURI WEEKLY SHEEP/GOAT AUCTION SUMMARY 7/26/25

Receipts: 2,552 Week Ago: 1,496 Last Year: 2,490

SHEEP: Feeder Lambs: Small and Medium 1-2 hair 30-40 lbs 240.00-290.00; 40-50 lbs 220.00-261.00; pkg 51 lbs 225.00. Slaughter Lambs: Choice and Prime 1-3 woolled and shorn 50-70 lbs 202.00-215.00; 100-140 lbs 160.00-210.00. hair 50-60 lbs 205.00-245.00; 60-70 lbs 200.00-250.00; 70-80 lbs 200.00-235.00; 80-100 lbs 187.00-205.00. Choice 1-3 hair 50-60 lbs 200.00-220.00; 60-70 lbs 182.50-220.00; 70-85 lbs 175.00-210.00. Slaughter Ewes: Good 2-3 hair 80-150 lbs 120.00-137.00. Utility and Good 1-3 hair 100-120 lbs 110.00-130.00. Slaughter Bucks 1-2 hair 100-150 lbs 120.00-155.00; 150-200 lbs 100.00-145.00. Replacement Ewes: Small and Medium 1-2 hair <1 yr 55-80 lbs open 130.00-185.00 per head; 1-2 yrs open or exp 74-105 lbs 145.00-260.00 per head; 2-6 yrs 100-150 lbs open or exp 140.00-205.00 per head.

GOATS: Feeder Kids: Selection 1 20-50 lbs 300.00-367.50. Selection 2 25-50 lbs 240.00-300.00. Slaughter Kids: Selection 1 50-70 lbs 305.00-350.00. Selection 2 50-90 lbs 225.00-300.00. Nannies Selection 1-2 75-95 lbs 122.00-165.00; 100-135 lbs 105.00-180.00. Bucks Selection 1-2 80-140 lbs 150.00-245.00. Replacement Nannies Selection 1-2 2-4 yrs exp 70-80 lbs 160.00 per head.

Explanatory Notes: Stage - Represents estimated lambing/kidding period (Open, Exp=exposed, Bred, Fall = Sep-Nov, Win = Dec-Feb, Spr = Mar-May, Sum=Jun-Aug; w/s = woolled and shorn; /hd= per head; /fam=per family
All price CWT unless otherwise noted.

MISSOURI DROUGHT MONITOR

Date	None	D0	D1	D2	D3	D4
7/22/25	100.00	0.0	0.0	0.0	0.0	0.0
7/15/25	90.65	9.35	0.0	0.0	0.0	0.0
7/23/24	98.86	1.14	0.0	0.0	0.0	0.0

Reflects percentage of Missouri impacted by drought. D0 Abnormally Dry; D1 Moderate Drought; D2 Severe Drought; D3 Extreme Drought; D4 Exceptional Drought

NATIONAL DIRECT DELIVERED FEEDER PIG REPORT

7/25/25 Receipts: 118,621 Week ago: 132,055 Year Ago: 109,423
Early weaned pigs 2.00 lower. Feeder pigs mostly steady.
Cash 85,978 head 40.00-65.00, weighted average 55.23
Formula 18,973 head 48.06-64.82, weighted average 55.50
Feeder pigs 40 pounds basis: Cash 13,670 head 73.00-88.00, weighted average 77.61

NATIONAL DAILY DIRECT PRIOR DAY HOG REPORTS 7/25/25

BARROWS AND GILTS (Carcass Basis): 4997 head
Base Carcass Price 98.00-115.00, weighted average 113.84

SOWS (Live Basis): 6806 head
300-500 lbs. 30.00-95.50
Over 500 lbs. 70.00-96.11

MISSOURI WEEKLY DIRECT SLAUGHTER CATTLE REPORT 7/18/25

Weekly Receipts: 320 Week ago: 200 Year ago: 280
Trading as of Friday morning, flat dressed prices mostly steady with grid dressed sales steady.

LIVE STEERS & HEIFERS: **DRESSED STEERS & HEIFERS:**
No sales reported 5 loads flat 380.00

GRADE AND EIGHT (Grid): 3 loads 384.00

Click here for the current [National Crop Progress](#)
Click here for the current [Missouri Crop Progress](#)
The current hay directory can be found at: [Hay Directory](#).