

# Weekly Market Summary

Published by:  
Missouri Department of Agriculture  
Ag Business Development Division  
Market News Program



Chris Chinn, Director  
Jill Wood, Division Director  
Tony Hancock, Editor  
[agmarketnews.mo.gov](http://www.ams.usda.gov/marketnews.htm)  
<http://www.ams.usda.gov/marketnews.htm>

Michael Kehoe, Governor

Volume XLV, Number 31 ♦ P.O. Box 630, Jefferson City, MO 65102 ♦ (573) 751-4211 ♦ Mon, Aug 4, 2025

## MISSOURI WEEKLY FEEDER CATTLE WEIGHTED AVERAGE REPORT

Feeder Cattle Receipts: 9,021 Week ago: 12,484 Year ago: 12,045  
Steers and Heifers Medium and Large 1—Weighted average weights and prices

### STEERS: Medium and Large 1

325 lbs. 500.07	524 lbs. 420.94	726 lbs. 351.69	938 lbs. 315.21
375 lbs. 506.61	569 lbs. 404.94	781 lbs. 341.24	
430 lbs. 466.41	625 lbs. 391.13	828 lbs. 336.55	
478 lbs. 438.79	684 lbs. 366.56	882 lbs. 322.20	

### HEIFERS: Medium and Large 1

333 lbs. 445.80	524 lbs. 377.74	722 lbs. 339.54	938 lbs. 290.00
388 lbs. 423.21	573 lbs. 359.56	765 lbs. 330.54	
421 lbs. 433.83	622 lbs. 355.10	823 lbs. 309.72	
480 lbs. 411.16	684 lbs. 347.64	862 lbs. 308.50	

## MISSOURI STEER (HEIFER) STOCKER FORMULA 8/04/2025

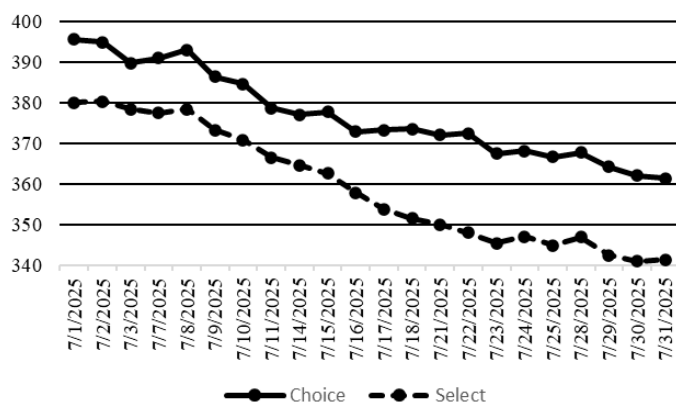
Monday's Missouri Stocker formula consists of **1409 (1504)** head with a weighted average weight of **538.33 (547.80)** lbs. and a price value of **409.15 (367.75)**, 16.48 higher (9.66 higher) than a week ago.

This a rolling seven day calculated weighted value which combines all Feeder Steers reported by MDA/USDA Market News Service weighing from 400-649 lbs. in the Medium and Large 1 and Medium and Large 1-2 frame and muscle classifications, including all comment cattle except Brahman X. Heifer values are in parentheses.

## NATIONAL BOXED BEEF CUTOUT VALUES

DATE	CHOICE	SELECT	TOTAL LOADS
7/28	367.73	346.85	91
7/29	364.19	342.48	118
7/30	361.99	340.91	168
7/31	361.32	341.37	109
8/1	363.22	340.50	72
5 Day Simple Average	363.69	342.42	

## Boxed Beef Cuts July 2025



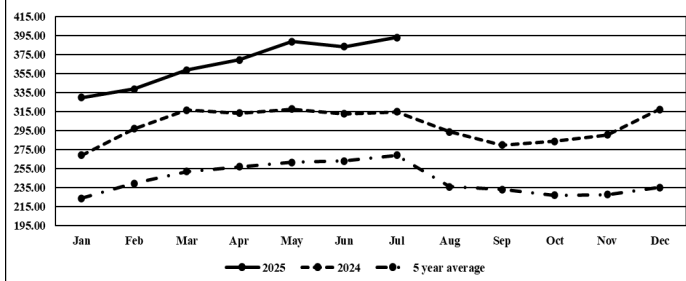
\*Axis value ranges may be updated to reflect data points.

## WEEKLY LIVESTOCK SLAUGHTER 8/02/25

	CATTLE	HOGS	SHEEP
Week to Date:	535,000	2,336,000	32,000
Last Week:	549,000	2,328,000	33,000
Last Year:	592,526	2,442,879	34,814

The Weekly Market Summary, as well as historical summaries, are available on our website <https://agmarketnews.mo.gov/summaries>  
Market News Hotline: 1-573-522-9244  
Check out the latest updates on our YouTube Channel: [MDA Market News](#)

## Missouri Stocker Formula - Steers



\*Graph is updated the first Monday of each month. Axis value ranges may be updated to reflect data points.

## MISSOURI WEEKLY CATTLE AUCTION SUMMARY

Total Receipts: 11,401 Week Ago: 14,253 Year Ago: 16,942

Compared to last week, feeders under 600 lbs. sold 10.00 to 20.00 higher, feeders over 600 lbs. sold steady to 10.00 higher. A very light offering this week, but markets were full of strength and demand was good to very good. Buyers are having hard times currently finding enough cattle to fill orders as the dog days of summer have kept receipts very limited. This isn't unusual for mid-summer and there are always a few weeks of extreme heat that makes transporting cattle a huge challenge. The overall continuing conformation with each cattle report released which keeps showing overall tighter supplies continues to add fundamental support to the market. Both the Missouri Stocker formula and the CME feeder cattle index recorded new all-time records last week. Late in the week temperatures cooled bringing some much-needed relief and should allow for more pleasant marketing opportunities this coming week. Stick out sales this week included 45 head of 506 lb. steers at Tina Livestock Auction which sold for 446.00, 137 head of 835 lb. steers for 347.85 and 11 head of 874 lb. steers for 330.75. Kingsville Livestock Auction sold 20 head of 621 lb. steers for 405.00 and 69 head of 791 lb. steers for 350.00. Mid-Missouri Stockyards sold 76 head of 697 lb. steers for 373.50. Joplin Regional Stockyards sold 74 head of 713 lb. steers for 356.00 and 23 head of 515 lb. heifers for 380.00. Lolli Brothers Livestock Market sold 241 head of 694 lb. heifers for 352.50 and a load of 658 lb. fancy heifers for 372.50. Kingsville Livestock Auction sold 73 head of 723 lb. heifers for 347.00. Boxed beef cutout values continued to decline, choice closed on Friday at 363.22, down 3.46 and Select closed at 340.50, down 4.32 compared to last Friday. The choice cutout lost 34.28 in July and Select was 38.69 lower for the month. Negotiated feedlot sales as of the 2:00 cutoff time on Friday afternoons report totaled just over 57K for the week. Prices were mostly higher for the week. Live trade in the south mostly 235.00, in the north live sales mostly 245.00 and dressed sales were mostly at 383.00. The Missouri Stocker formula consists of 1409 head with a weighted average weight of 538.33 lbs. and a price value of 409.15, 16.48 higher than last week. The steer/heifer spread is 41.40 per cwt.

### SOUTHWEST MISSOURI WEEKLY SUMMARY

(Joplin and Springfield)

Receipts: 6,752 Week ago: 6,860 Year Ago: 6,925  
Compared to last week, feeders over 500 lbs sold steady to 15.00 higher, under 500 lbs sold 20.00 to 30.00 higher. Slaughter cows sold steady to 3.00 higher and bulls sold steady to 5.00 higher.

#### FEEDER STEERS: Medium and Large 1

300-400 lbs.	460.00-532.00
400-500 lbs.	412.50-190.00
500-600 lbs.	380.00-440.00
600-700 lbs.	345.00-400.00
700-800 lbs.	330.00-367.00
800-900 lbs.	315.00-334.00
900-950 lbs.	313.50-315.50

#### FEEDER HEIFERS: Medium and Large 1

300-400 lbs.	407.00-455.00
400-500 lbs.	385.00-455.00
500-600 lbs.	342.00-390.00
600-700 lbs.	334.00-380.00
700-800 lbs.	314.00-337.00
800-900 lbs.	290.00-312.00

#### FEEDER HOLSTEIN STEERS Large 3

400-500 lbs.	Scarce
500-600 lbs.	
700-750 lbs.	
800-900 lbs.	
950-1000 lbs.	

SLAUGHTER COWS: Breaking and Boning (70-85% lean) 149.00-168.00; high dressing 166.00-186.00; low dressing 130.00-152.00. Lean (85-90%) 130.00-150.00.

SLAUGHTER BULLS: Yield Grade 1-2 1220-2250 lbs. 182.50-207.00; high dressing 200.00-230.00; low dressing 170.00-180.00.

BRED COWS: Medium and Large 1 2-8 yrs 1025-1600 lbs 2nd and 3rd stage 2850.00-4100.00; short and solid 2600.00-3300.00 per head 1080-1465 lbs 1st stage 2750.00-3100.00 per head. Medium and Large 1-2 2-8 yrs 1020-1775 lbs 2nd and 3rd stage 2850.00-4100.00; 1st stage 2750.00-3100.00 per head.

BRED HEIFERS: Medium and Large 1 2-4 yrs 1025-1300 lbs 2nd and 3rd stage 3375.00-4050.00 per head Medium and Large 1-2 2-4 yrs 1000-1250 lbs 2750.00-3500.00 per head

### SOUTH CENTRAL MISSOURI WEEKLY SUMMARY

(West Plains, Phillipsburg)

Receipts: 1,477 Week ago: 1,758 Year Ago: 2,189  
Compared to last week, feeders sold steady to 10.00 higher, with some light weights 10.00-20.00 higher. Slaughter cows and bulls sold steady to 3.00 higher.

#### FEEDER STEERS: Medium and Large 1

300-400 lbs.	473.00-510.00
400-500 lbs.	423.00-460.00
500-600 lbs.	396.00-421.00
600-700 lbs.	357.50-400.00
700-800 lbs.	344.00-350.00
34 hd 825 lbs.	335.00

#### FEEDER HEIFERS: Medium and Large 1

300-400 lbs.	412.50-450.00
400-500 lbs.	390.00-405.00
500-600 lbs.	359.00-392.50
600-700 lbs.	337.50-359.00

#### FEEDER HOLSTEIN STEERS: Large 3

Scarce	Scarce
--------	--------

SLAUGHTER COWS: Breaking and Boning (70-85% lean) 152.00-167.00, high dressing 160.00-174.00; low dressing 127.00-155.00. Lean (85-90%) 126.00-152.00.

SLAUGHTER BULLS: Yield Grade 1-2 1150-2100 lbs. 179.50-197.50; high dressing 206.00-227.00; low dressing 140.00-176.00

BRED COWS: Medium and Large 1 2-8 yrs 1275-1300 lbs 2nd and 3rd stage 3250.00-3450.00 per head Medium and Large 1-2 2-8 yrs 1050-1550 2nd and 3rd stage 2300.00-3425.00 per head.

COW & CALF PAIRS: Medium 1-2 2-8 yrs 1150-1250 lbs calves 150-300 lbs 4250.00-4500.00 per pair

### WEST CENTRAL MISSOURI WEEKLY SUMMARY

(Kingsville, Windsor, Butler)

Receipts: 644 Week ago: 829 Year ago: 1,634  
Compared to last week, steers and heifers sold 3.00 to 7.00 higher. Slaughter cows sold mostly steady.

#### FEEDER STEERS: Medium and Large 1

400-500 lbs.	430.00-501.00
500-600 lbs.	414.00-455.00
600-650 lbs.	389.00-407.00
700-800 lbs.	345.00-374.00

#### FEEDER HEIFERS: Medium and Large 1

400-500 lbs.	415.00-489.00
500-600 lbs.	349.00-428.00
600-650 lbs.	337.00-340.50
700-750 lbs.	319.00-347.00

SLAUGHTER BULLS: Yield Grade 1-2 1370-2400 lbs. 185.00-209.00; high dressing 218.00

SLAUGHTER COWS: Breaking and Boning (70-85% lean) 157.00-176.00, high dressing 176.00-182.00. Lean (85-90%) 127.00-149.00

BRED COWS: Scarce

COW & CALF PAIRS: Scarce

### NORTHEAST MISSOURI WEEKLY SUMMARY

(Bowling Green, Kingdom City, Palmyra)

Receipts: 385 Week ago: 2,631 Year ago: 2,544  
Compared to last week to few feeders for a trend. Slaughter cows sold steady to 3.00 higher.

#### FEEDER STEERS: Medium and Large 1-2

600-700 lbs.	335.00-381.00
700-800 lbs.	335.00-340.00

#### FEEDER HEIFERS: Medium and Large 1

500-600 lbs.	369.00-380.00
--------------	---------------

SLAUGHTER BULLS: Yield Grade 1-2 1425-2200 lbs. 190.00-205.00; high dressing 209.00-221.00

SLAUGHTER COWS: Breaking and Boning, (70-85% lean) 164.00-183.00; high dressing 178.00-188.00. Lean (85-90%) 150.00-163.00.

SLAUGHTER STEERS: Choice 2 -3 237.50-242.50

SLAUGHTER HEIFERS: Choice 2-3 237.00-243.50

BRED COWS: Scarce

COW CALF PAIRS: Scarce

### NORTH CENTRAL MISSOURI WEEKLY SUMMARY

(Macon, Unionville, Green City, New Cambria)

Receipts: 675 Week ago: 1,024 Year ago: 725  
\*Some sale barns on a bi-weekly schedule and may not have a sale each week.  
Compared to the previous test 3 like loads of heifers sold 10.00 higher, other groups and load sold with firm to higher undertones. Slaughter cows and bulls scarce

#### FEEDER STEERS: Medium and Large 1

Few 556 lbs.	439.00
23 hd 632 lbs.	419.50
Few 800 lbs.	331.00
Load 945 lbs.	317.75

#### FEEDER HEIFERS: Medium and Large 1

550-600 lbs.	370.50-377.00
600-700 lbs.	352.50-365.25

SLAUGHTER BULLS: Scarce

SLAUGHTER COWS: Scarce

BRED COWS: Scarce

COW/CALF PAIRS: Scarce

### SOUTHEAST MISSOURI WEEKLY SUMMARY

(Jackson and Farmington)

Receipts: 292 Week ago: 765 Year ago: 624

Too few feeders to establish a trend. Slaughter cows and bulls steady to 3.00 higher.

#### FEEDER STEERS:

Medium and Large 1

400-500 lbs. 428.00-482.00  
500-600 lbs. 417.00-422.00  
600-700 lbs. 292.00-350.00

#### FEEDER HEIFERS:

Medium and Large 1

300-400 lbs. 400.00-447.00  
400-500 lbs. 365.00-435.00  
500-600 lbs. 320.00-347.00  
600-700 lbs. 312.00-332.00

SLAUGHTER BULLS: Yield  
Grade 1-2 1200-1925 lbs 170.00-  
182.00, high dressing 185.00-  
202.00

SLAUGHTER COWS: Breaking  
and Boning (75-85% lean) 147.00-  
164.00; high dressing 156.00-  
180.00. Lean (85-90% lean)  
109.00-120.00

BRED COWS: Medium and Large  
2-2-8 yrs 1125-1275 lbs 2nd and  
3rd stage 1900.00-3150.00 per  
head

COW & CALF PAIRS: scarce

### EAST CENTRAL MISSOURI WEEKLY SUMMARY

(Cuba, Vienna) (w/e 7/25/25)

Receipts: 404 Week Ago: 819 Year ago: 2,726

Feeder supply not sufficient to establish a market trend

#### FEEDER STEERS:

Medium and Large 1

350-400 lbs. 468.00-492.00  
400-500 lbs. 420.00-481.00  
500-600 lbs. 400.00-417.00  
600-650 lbs. 368.00-374.50  
700-725 lbs. 335.75-339.25

#### FEEDER HEIFERS:

Medium and Large 1

450-500 lbs. 361.00-418.00  
500-600 lbs. 333.50-384.50  
650-700 lbs. 315.00

SLAUGHTER BULLS: Yield  
Grade 1-2 1665 lbs ind 189.00

SLAUGHTER COWS: Breaking  
and Boning, (70-85% lean) Scarce.  
Lean (85-90%) 134.50-149.00

BRED COWS: Medium and  
Large 1-2 2-4 yrs 950-1350 3rd  
stage 2650.00-3400.00 per head.

COW & CALF PAIRS: Scarce

### NORTHWEST MISSOURI WEEKLY SUMMARY

(Tina)

Receipts: 1,176 2 Weeks Ago: 1,737 Year Ago: 2,055

Compared to two weeks ago, feeders sold steady to 10.00 higher, slaughter cows and bulls steady to 5.00 higher.

#### FEEDER STEERS:

Medium and Large 1

400-500 lbs. 457.50-476.00  
500-600 lbs. 438.00-451.00  
600-700 lbs. 392.00-405.00  
800-900 lbs. 330.75-347.85

#### FEEDER HEIFERS:

Medium and Large 1

400-500 lbs. 417.50-427.50  
500-600 lbs. 374.00-415.00  
600-650 lbs. 368.00-377.50  
Pkg 712 lbs. 341.00

#### SLAUGHTER BULLS:

Yield Grade 1-2 ind 1670 lbs  
196.50; high dressing ind 1955  
212.00

SLAUGHTER COWS: Breaking  
and Boning, (70-85% lean) 152.00-  
169.50; high dressing 168.50-  
179.00. Lean (85-90%) 135.00-  
142.00.

BRED COWS: Scarce

COW/CALF PAIRS: Scarce

### AFTERNOON NATIONAL SLAUGHTER CATTLE REVIEW

So far for Friday, negotiated cash trade has been moderate on moderate demand in Kansas. Compared to Thursday, live purchases have been 1.00 higher at 236.00. Negotiated cash trade has been light to moderate on moderate demand in Nebraska. Compared to Thursday, live purchases have been 2.00 higher at 247.00 while dressed purchases ranged from 382.00-383.00, but not enough for an adequate market test. The last established dressed market in Nebraska was Thursday at mostly 383.00. Negotiated cash trade has been light on moderate demand in the Western Cornbelt. Compared to Thursday, live purchases have been steady at 245.00 while there have not been enough dressed purchases for a market test. The last established dressed market in the Western Cornbelt was Thursday at mostly 383.00. Negotiated cash trade has been mostly inactive on moderate demand in the Texas Panhandle. The last established market in the Texas Panhandle was Thursday at 235.00.

#### Negotiated Cash Sales:

<b>Confirmed:</b>	14,088	<b>Week Ago:</b>	14,630	<b>Year Ago:</b>	21,770
<b>Week to date:</b>	57,291	<b>Week Ago:</b>	19,808	<b>Year Ago:</b>	66,524

<u>Live Basis</u>	<u>Steers</u>	<u>Heifers</u>
<b>Over 80% Choice</b>	235.00-247.00 avg 245.27	236.00-247.00 avg 245.70
<b>65-80% Choice</b>	235.00-247.00 avg 241.08	235.00-247.00 avg 240.62
<b>35-65% Choice</b>	236.00-236.00 avg 236.00	--
<b>0-35% Choice</b>	-	-
<b>Total All Grades</b>	235.00-247.00 avg 243.15	235.00-247.00 avg 244.17
<b>Dressed Basis</b>		
<b>Over 80% Choice</b>	380.00-386.00 avg 382.81	382.00-386.00 avg 384.64
<b>65-80% Choice</b>	382.00-385.00 avg 383.66	382.00-382.00 avg 382.00
<b>35-65% Choice</b>	-	-
<b>0-35% Choice</b>	-	-
<b>Total All Grades</b>	380.00-386.00 avg 383.04	382.00-386.00 avg 383.66

<u>All Beef Type Steers/Heifers</u>	<u>Head</u>	<u>Avg Wt</u>	<u>Price Range</u>	<u>Wtd Avg</u>
Live FOB	10,657	1434.0	235.00-247.00	243.50
Live Del	685	1375.5	238.00-246.00	241.99
Dressed Del	2,686	919.8	380.00-386.00	383.18
Dressed FOB	-	-	-	-

#### WEEKLY COMMODITY FUTURES TRENDS

Compared to last week, Live Cattle 0.72 to 3.65 higher, Lean Hogs nearby 0.55 to 1.35 lower, distant 0.05 to 0.15 higher, Feeder Cattle 0.40 to 3.20 higher.

#### Daily Futures Closes

	Mon.	Tues.	Wed.	Thu.	Fri.
Cattle					
Aug	227.87	229.72	233.07	227.77	230.12
Oct	224.77	226.45	229.72	223.15	223.67
Dec	225.35	226.75	229.90	223.92	224.42
Feb	225.67	227.05	229.55	224.30	225.05
Apr	225.70	226.90	228.74	223.97	224.82
Lean Hogs					
Aug	108.52	107.25	107.02	107.12	107.35
Oct	90.87	88.72	89.20	89.57	90.05
Dec	82.90	80.80	81.20	81.72	82.35
Feb	85.15	83.20	83.52	83.95	84.65
Apr	88.27	86.57	86.87	87.22	87.92
Fdr Cattle					
Aug	333.52	336.20	338.95	331.37	334.57
Sep	334.55	337.07	339.75	331.55	333.92
Oct	333.35	333.90	338.55	330.17	331.85
Nov	331.02	333.32	336.15	327.95	328.97
Jan	324.25	326.30	329.05	320.95	322.02
Milk					
Jul	17.32	17.29	17.32	—	—
Aug	17.36	17.15	17.07	17.13	17.28
Sep	17.76	17.52	17.33	17.60	17.74

## WEEKLY COMMODITY GRAIN FUTURES TRENDS

Compared to last week, Soybeans 0.30 to 0.37 lower, Wheat 0.19 to 0.21 lower, Corn 0.08 to 0.10 lower, 0.08 to 0.12 lower, Soybean Meal 0.30 to 1.50 lower.

### Daily Grain Futures Closes

	Mon.	Tues.	Wed.	Thu.	Fri.
<b>Soybeans</b>					
Aug	988 3/4	981 3/4	967 3/4	961 3/4	961 3/4
Sep	992 1/2	989 1/2	975 3/4	969 1/2	969 1/2
Nov	1011 1/2	1009 1/2	995 3/4	989 1/4	989 1/4
Jan	1030	1028	1014 1/2	1007 1/2	1007 3/4
Mar	1046	1044	1030 1/2	1024	1024 1/4
<b>Wheat</b>					
Sep	538 1/2	529 3/4	523 3/4	523 1/4	516 3/4
Dec	558 3/4	550	544 1/4	542 1/2	537
Mar	577 1/4	568 1/2	563	560 3/4	555 3/4
May	588 3/4	579 3/4	575	572 1/2	568
Jul	595 1/2	586 3/4	582 1/4	580	575 1/2
<b>Corn</b>					
Sep	393 3/4	389 1/4	391 3/4	394	389 1/2
Dec	414	411	412 1/4	413 3/4	410 3/4
Mar	431 1/4	428 3/4	429 1/2	430 1/2	428 1/4
May	441 1/2	439	439 3/4	440 3/4	438 1/2
Jul	447 3/4	445 1/2	446 1/2	447	445
<b>KC Wheat</b>					
Sep	526	518 1/2	522	526 1/4	518 3/4
Dec	546 3/4	539 1/2	542 1/4	544 3/4	538 1/2
Mar	567 1/4	559 1/2	562	563	557 1/2
May	580 3/4	572 3/4	575 1/4	575 1/2	570
Jul	590 1/4	582 1/2	585	584 3/4	579 1/2
<b>SB Meal</b>					
Aug	264.90	261.70	260.70	261.80	267.50
Sep	269.40	266.40	264.80	265.90	270.90
Oct	272.90	270.10	268.20	269.40	274.00
Dec	279.30	276.50	274.50	276.00	280.50
Jan	282.80	280.10	278.20	279.70	284.20

## MISSOURI GRAIN WEEKLY TRENDS

Compared to last week, Soybeans 0.40 to 0.67 lower, Wheat 0.22 lower, Corn 0.15 to 0.21 lower.

Area	#1 Soybeans	#2 Soft Wheat	#2 Corn	#2 Grain Sorghum
<b>Kansas City</b>				
Friday**	10.19-10.41	5.23	4.12	—
Monday	10.11-10.31	5.23	4.06	—
Tuesday	10.09-10.29	5.14	4.02	—
Wednesday	9.95-10.10	—	4.04	—
Thursday	9.76-9.89	—	4.01	—
Friday	9.64	—	3.96	—
<b>St. Louis</b>				
Friday**	10.20-10.21	5.11-5.13	4.29	—
Monday	10.11-10.12	5.11-5.13	4.13-4.21	—
Tuesday	10.01-10.02	5.02-5.04	4.05-4.06	—
Wednesday	9.84-9.87	4.96-4.98	4.07-4.09	—
Thursday	9.79	4.96-4.99	4.12-4.13	—
Friday	9.80-9.81	4.89-4.91	4.08-4.10	—
<b>Central</b>				
Friday**	9.73-10.11	4.83-5.23	3.79-3.84	—
Monday	9.63-10.01	4.83-5.23	3.73-3.78	—
Tuesday	9.56-9.99	4.74-5.14	3.69-3.74	—
Wednesday	9.42-9.85	4.68-5.08	3.71-3.76	—
Thursday	9.64-9.79	4.68-5.08	3.69-3.74	—
Friday	9.64-9.79	5.01	3.64-3.79	—
<b>S.E. MO</b>				
Friday**	9.98	—	4.17-4.24	—
Monday	9.88	—	4.08-4.11	—
Tuesday	9.81	—	4.04	—
Wednesday	9.67	—	3.96-4.01	—
Thursday	9.56-9.61	—	3.94-4.04	—
Friday	9.56-9.79	—	3.89	—

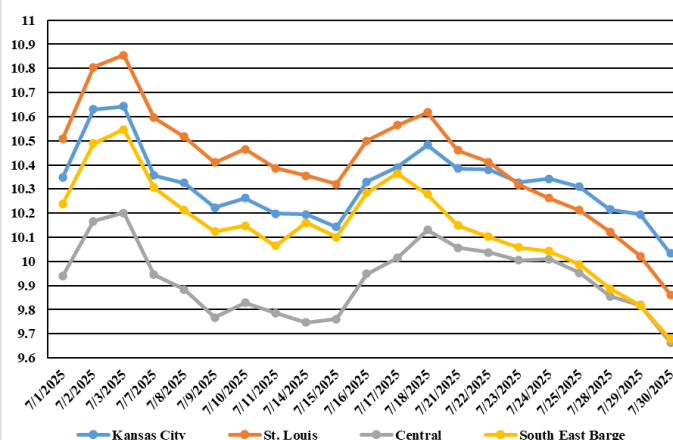
(PRICES PER BUSHEL) \*NEW CROP \*\*PREVIOUS WEEK'S PRICES  
\*Bids calculated using Kansas City, St. Louis, and St. Joseph bids

## MONTHLY GRAIN CROP

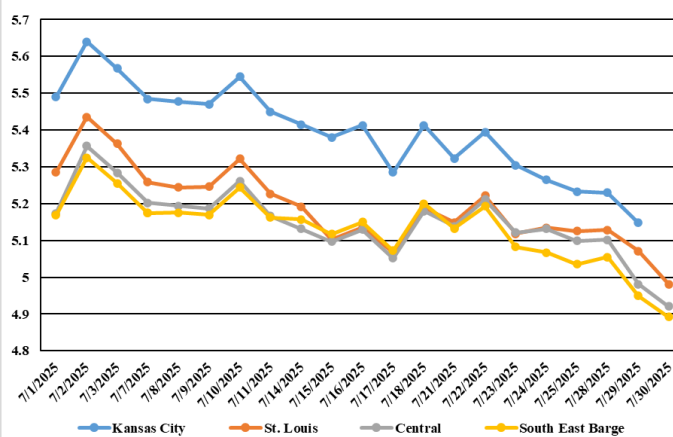
### July 2025 Corn Bids



### July 2025 Soybean Bids



### July 2025 Wheat Bids



\*Axis value ranges may be updated to reflect data points.  
Only dates in which markets are trading and only current cash bids are represented.

## WHOLESALE FEEDSTUFFS PRICES (DOLLARS PER TON-BULK BASIS)

Area	<u>Cottonseed Meal 41%</u>	<u>Soybean Meal 46.5-48%</u>	<u>Corn Gluten Pellets 21%</u>	<u>Wheat Middlings</u>
Kansas City	297.50	229.85	184.00	78.33
St. Louis	292.50	n/a	179.00	82.50



### MISSOURI CROP PROGRESS REPORT 7/28/25

There were 4.0 days suitable for fieldwork in the week ending July 20, 2025. Topsoil moisture supply was rated 0 percent very short, 8 percent short, 71 percent adequate, and 21 percent surplus. Subsoil moisture supply was rated 0 percent very short, 12 percent short, 76 percent adequate, and 12 percent surplus. Corn silking reached 91 percent, compared to the 5-year average of 89 percent. Corn in the dough stage reached 48 percent, compared to the 5-year average of 47 percent. Corn condition was rated 1 percent very poor, 5 percent poor, 15 percent fair, 62 percent good, and 17 percent excellent. Soybeans blooming reached 67 percent, compared to the five-year average 63 percent. Soybeans setting pods reached 34 percent, compared to 29 percent for the 5-year average. Soybean condition was rated 3 percent poor, 19 percent fair, 69 percent good, and 9 percent excellent. Winter wheat harvested reached 100 percent, compared to the 5-year average of 100 percent. Pasture conditions were rated at 1 percent poor, 11 percent fair, 74 percent good, and 14 percent excellent.

	Week Ending			
	7/27/24	7/20/25	7/27/25	5 yr average
Corn Silking	92	86	91	89
Corn Dough	60	35	48	47
Soybeans Blooming	66	57	67	63
Soybeans Setting Pods	35	24	34	29
Winter Wheat Harvested	100	99	100	100
Alfalfa hay 2nd cutting	89	70	75	89
Alfalfa hay 3rd cutting	27	10	18	21
Other hay cut	95	88	90	94

### AGRICULTURE PRICES

**June Prices Received by Farmers Crop production:** The June index, at 103.6, is 0.3 percent higher than May but 3.5 percent lower than June 2024. The fruit & tree nut and vegetable & melon index increases more than offset the grain & oilseed and other crop index decreases. **Grain and oilseed:** The June index, at 78.2, is down 3.1 percent from May and 5.3 percent from June 2024. Feed grain and food grain index decreases more than offset the oilseed index increase. **Feed grain:** The June index, at 74.8, decreased 3.5 percent from last month and 0.7 percent from a year ago. The corn price, at \$4.47 per bushel, is down 17 cents from last month and 1 cent from June 2024. **Livestock production:** The index for June, at 170.2, decreased 0.2 percent from the previous month but increased 16 percent from June a year earlier. The lower poultry & egg index more than offset the higher meat animal index. **Meat animal:** At 181.6, the June index increased 4.4 percent from the previous month and 22 percent from a year earlier. At \$76.70 per cwt, the June hog price is \$8.30 higher than May and \$7.90 higher than a year earlier. The June beef cattle price of \$228.00 per cwt is \$9.00 higher than the previous month and \$39.00 higher than June 2024. **Dairy:** The index for June, at 106.0, is unchanged from the previous month but down 6.5 percent from June a year ago. The June all milk price of \$21.30 per cwt is unchanged from May but \$1.50 lower than June 2024.

### MISSOURI WEEKLY HAY SUMMARY 7/24/25

As of the latest drought monitor the entire state is now considered 100 percent drought free. Significant improvement was noted for just about all the states in the Midwest this week. Rains, which if one was under specific clouds were excessive at times, have been plentiful for July thus far has the state looking much more like Mid-May rather than late July. Pastures in the state continue to be some of the highest rated in the nation and much better than those in neighboring states. Hay movement has been slow, prices are steady to week, supplies are heavy, and demand is light. The Missouri Department of Agriculture has a hay directory at <https://apps.mda.mo.gov/haydirectory> or visit the University of Missouri Extension feed stuff finder at <https://feedstufffinder.org>

Alfalfa - Supreme 250.00-300.00, small square 10.00-15.00 per bale  
Alfalfa - Premium 175.00-225.00  
Alfalfa - Good 150.00-175.00, small square 6.00-10.00 per bale  
Alfalfa - Fair 125.00-150.00  
Mixed Grass—Premium 150.00-200.00  
Mixed grass - Good/Premium 100.00-150.00  
Mixed grass-Fair/Good 75.00-125.00, small square 3.00-7.00 per bale  
Mixed grass - Fair 25.00-50.00 per large round bale

Please Note: The above volumes (tonnage, acres, and bales) listed are for confirmed trades only, it does not include estimated volume (tonnage) for bids or offers to the trade. List your hay for sale at: [Hay Listing Online Form](#). Explanation of Hay Quality Guidelines: [Hay Quality Designation Guidelines](#). Glossary of Terms: [Livestock, Poultry, & Grain Hay Terms](#)

### MISSOURI WEEKLY SHEEP/GOAT AUCTION SUMMARY 8/01/25

Receipts: 898 Week Ago: 2,552 Last Year: 649

**SHEEP:** Feeder Lambs: Small and Medium 1-2 hair 20-30 lbs 320.00-355.00; 30-40 lbs 272.50-355.00, fancy 370.00; 40-50 lbs 245.00-395.00. Slaughter Lambs: Choice and Prime 1-3 hair 50-60 lbs 225.00-250.00; 60-70 lbs 230.00-250.00; 70-80 lbs 220.00-270.00; 80-95 lbs 210.00-225.00. Choice 1-3 hair 60-80 lbs 217.50-225.00. Slaughter Ewes: Good 2-3 hair 85-145 lbs 125.00-140.00. Replacement Ewes: Small and Medium 1-2 hair 1-2 yrs exposed 85-100 lbs 235.00-300.00. 2-4 yrs exposed 78 lbs 205.00. 4-6 yrs 105-135 lbs exposed 165.00-200.00.

**GOATS:** Feeder Kids: Selection 1 30-40 lbs 325.00-377.50, fancy 390.00-407.50; 40-50 lbs 307.50-357.50. Selection 2 20-46 lbs 265.00-310.00. Slaughter Kids: Selection 1 50-60 lbs 310.00-365.00; 60-70 lbs 322.50-370.00. Selection 2 50-85 lbs 225.00-295.00. Nannies Selection 1-2 85-135 lbs 140.00-200.00. Replacement Nannies Selection 1-2 1-2 yrs exposed 70-115 lbs 195.00-300.00.

Explanatory Notes: Stage - Represents estimated lambing/kidding period (Open, Exp=exposed, Bred, Fall = Sep-Nov, Win = Dec-Feb, Spr = Mar-May, Sum=Jun-Aug; w/s = woolled and shorn; /hd= per head; /fam=per family  
All price CWT unless otherwise noted.

### MISSOURI DROUGHT MONITOR

Date	None	D0	D1	D2	D3	D4
7/29/25	100.00	0.0	0.0	0.0	0.0	0.0
7/22/25	100.00	0.0	0.0	0.0	0.0	0.0
7/30/25	93.38	6.62	0.0	0.0	0.0	0.0

Reflects percentage of Missouri impacted by drought. D0 Abnormally Dry; D1 Moderate Drought; D2 Severe Drought; D3 Extreme Drought; D4 Exceptional Drought

### NATIONAL DIRECT DELIVERED FEEDER PIG REPORT

8/01/25 Receipts: 137,283 Week ago: 118,621 Year Ago: 137,422  
Early weaned pigs steady to 1.00 lower. Feeder pigs 5.00 lower.  
Cash 69,188 head 38.00-65.00, weighted average 54.19  
Formula 60,445 head 44.22-64.82, weighted average 53.75  
Feeder pigs 40 pounds basis: Cash 7,650 head 66.00-77.00, weighted average 72.68

### NATIONAL DAILY DIRECT PRIOR DAY HOG REPORTS 8/01/25

**BARROWS AND GILTS** (Carcass Basis): 1505 head  
Base Carcass Price 100.00-114.50, weighted average 109.46

**SOWS (Live Basis):** 6068 head  
300-500 lbs. 30.00-96.00  
Over 500 lbs. 77.56-96.66

### MISSOURI WEEKLY DIRECT SLAUGHTER CATTLE REPORT 8/01/25

Weekly Receipts: 360 Week ago: 0 Year ago: 280  
Trading as of Friday morning, flat dressed prices 3.00 higher with grid  
dressed sales inactive.

**LIVE STEERS & HEIFERS:** **DRESSED STEERS & HEIFERS:**  
No sales reported 4 loads flat 383.00

**GRADE AND EIGHT (Grid):** no sales reported

Click here for the current [National Crop Progress](#)  
Click here for the current [Missouri Crop Progress](#)  
The current hay directory can be found at: [Hay Directory](#).