

# Weekly Market Summary

Published by:  
Missouri Department of Agriculture  
Ag Business Development Division  
Market News Program



Chris Chinn, Director  
Jill Wood, Division Director  
Tony Hancock, Editor  
<http://www.ams.usda.gov/marketnews.htm>  
<http://www.ams.usda.gov/marketnews.htm>

Michael Kehoe, Governor

Volume XLV, Number 47 ♦ P.O. Box 630, Jefferson City, MO 65102 ♦ (573) 751-4211 ♦ Mon, Nov 24, 2025

## MISSOURI WEEKLY FEEDER CATTLE WEIGHTED AVERAGE REPORT

Feeder Cattle Receipts: 25,491 Week ago: 32,391 Year ago: 26,183  
Steers and Heifers Medium and Large 1—Weighted average weights and prices

### STEERS: Medium and Large 1

280 lbs. 513.22	475 lbs. 438.38	671 lbs. 364.94	868 lbs. 328.61
326 lbs. 470.57	524 lbs. 419.25	719 lbs. 351.89	918 lbs. 323.20
384 lbs. 460.73	576 lbs. 394.76	769 lbs. 346.33	967 lbs. 305.29
425 lbs. 453.63	623 lbs. 375.36	819 lbs. 346.42	1030 lbs. 296.15

### HEIFERS: Medium and Large 1

261 lbs. 415.34	474 lbs. 392.37	673 lbs. 353.63	870 lbs. 301.97
322 lbs. 428.13	521 lbs. 365.84	729 lbs. 334.33	901 lbs. 300.00
377 lbs. 413.54	572 lbs. 357.10	777 lbs. 316.65	1073 lbs. 215.00
425 lbs. 400.99	622 lbs. 343.14	822 lbs. 306.35	

## MISSOURI STEER (HEIFER) STOCKER FORMULA 11/24/2025

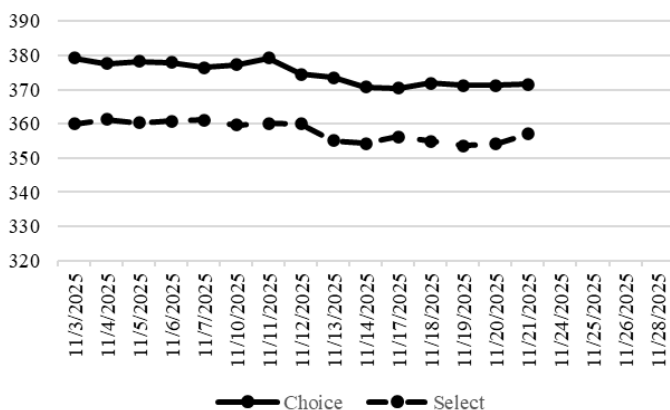
Monday's Missouri Stocker formula consists of **5155 (4022)** head with a weighted average weight of **546.67 (528.19)** lbs. and a price value of **392.19 (354.70)**, 9.32 lower (9.21 lower) than a week ago.

This a rolling seven day calculated weighted value which combines all Feeder Steers reported by MDA/USDA Market News Service weighing from 400-649 lbs. in the Medium and Large 1 and Medium and Large 1-2 frame and muscle classifications, including all comment cattle except Brahman X. Heifer values are in parentheses.

## NATIONAL BOXED BEEF CUTOUT VALUES

DATE	CHOICE	SELECT	TOTAL LOADS
11/20	371.28	354.18	116
11/19	371.23	353.55	179
11/18	371.95	354.95	163
11/17	370.41	356.30	75
11/14	370.73	354.24	128
5 Day Simple Average	371.12	354.64	

## Boxed Beef Cuts November 2025



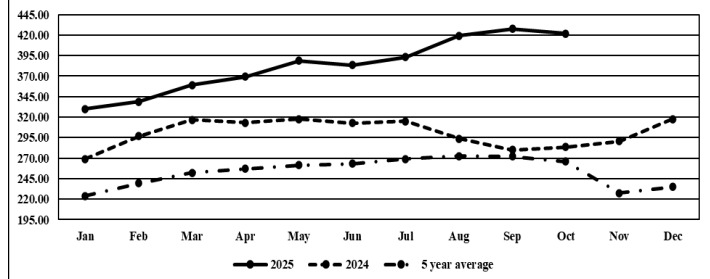
\*Axis value ranges may be updated to reflect data points.

## WEEKLY LIVESTOCK SLAUGHTER 11/22/25

	CATTLE	HOGS	SHEEP
Week to Date:	585,000	2,603,000	37,000
Last Week:	576,000	2,701,000	40,000
Last Year:	635,308	2,580,375	38,162

The Weekly Market Summary, as well as historical summaries, are available on our website <https://agmarketnews.mo.gov/summaries>  
Market News Hotline: 1-573-522-9244  
Check out the latest updates on our YouTube Channel: [MDA Market News](https://www.youtube.com/channel/UCM4M4M4M4M4M4M4M4M4M4M4)

## Missouri Stocker Formula - Steers



\*Graph is updated the first Monday of each month. Axis value ranges may be updated to reflect data points.

## MISSOURI WEEKLY CATTLE AUCTION SUMMARY

Total Receipts: 30,927 Week Ago: 38,372 Year Ago: 31,850

Compared to last week, feeders were once again very uneven around auction barns but overall, the market was mostly steady to 10.00 lower. A decent pre-holiday week supply of feeders around the auctions in the state this week. Many reporters noted that the offering wasn't quite as attractive as last week when so many sales had some sort of special sale with many big groups of fancier types of cattle. Much more of this week offering especially on the calf side came in smaller lots and groups. The monthly cattle on feed report was released on Friday along with some of the data that was missed in the Oct. report. Numbers were within pre-report estimates with maybe an ever so slight lean towards being bullish. The number of steers and heifers on feed was caught up from the missing report last month and showed heifers at 38% of the total on feed numbers which many expected to be smaller and reflective of maybe a bit more retention and growth. At 38% any growth would be very small and extremely slow. The report was likely overshadowed by other headlines however that once again had a very negative impact on the market. Removal of some of the tariffs of Brazilian beef imports came early in the week. Late Friday news of Tyson's plans to close a major beef plant in NE grabbed all the headlines. Although supplies of cattle for slaughter are historically low, and chain speeds have been kept slow for a while now any time shackle space is loss it is very negative. The industry had expected news like this to come eventually from one of the major four, but it was still a kick and going to be a very negative start for the coming week. Boxed beef cutout values closed slightly higher for the week. Choice closed on Friday at 371.48, up 0.75 and select closed at 356.98, up 2.74 compared to last week. Negotiated feedlot sales as of the 2:00 cutoff time on Friday afternoons report came in just under 56K head. Prices continue to lose ground and were down several dollars again this week. Live sales in the south were reported mostly 222.00-224.00, in the north ranged from 212.00-218.00 and dressed sales 340.00-347.00. The Missouri Stocker formula consists of 5155 head with a weighted average weight of 546.67 lbs. and a price value of 392.19, 9.21 lower than last week. The steer/heifer spread is 37.49.

### SOUTHWEST MISSOURI WEEKLY SUMMARY

(Joplin, Springfield, Exeter)  
Receipts: 13,161 Week ago: 15,814 Year Ago: 13,626

Compared to last week, markets were uneven again. The feeders sold from 12.00 lower to 10.00 higher. Slaughter cattle sold from 2.00 lower to 5.00 higher.

#### FEEDER STEERS:

Medium and Large 1

300-400 lbs.	435.00-510.00
400-500 lbs.	410.00-470.00
500-600 lbs.	372.00-452.00
600-700 lbs.	350.00-421.00
700-800 lbs.	340.00-371.00
800-900 lbs.	310.50-360.00
900-1000 lbs.	312.50-313.00

#### FEEDER HOLSTEIN STEERS

Large 3

Scarce

#### FEEDER HEIFERS:

Medium and Large 1

300-400 lbs.	390.00-480.00
400-500 lbs.	364.00-429.00
500-600 lbs.	340.00-392.00
600-700 lbs.	330.00-350.00
700-800 lbs.	303.00-332.00
800-900 lbs.	295.00-330.00

#### SLAUGHTER COWS: Breaking and Boning (70-85% lean)

139.00-	160.00; high dressing
155.00-	178.00; low dressing
122.50-	147.00 Lean (85-90%)
125.00-	153.00; high dressing
143.00-	155.00; low dressing
100.00-	130.00

#### SLAUGHTER BULLS: Yield

Grade 1-2 1335-2450 lbs.	174.00-
205.00; high dressing	192.50-
217.00; low dressing	150.00-
178.00.	

BRED COWS: Medium and Large 1 1015-1360 lbs. 2-4 yrs 2nd-3rd stage 3600.00-3700.00; 2-8 yrs. 2nd-3rd stage 2875.00-3575.00

Medium and Large 1-2 910-1525 lbs. 2-8 yrs. 2nd-3rd stage 1850.00-3200.00; Over 8 yrs. 2nd-3rd stage 1700.00-2675.00

COW CALF PAIRS: Medium and Large 1-2 with 150-300 lb. calves 2-8 yrs. Open 3100.00-3500.00

#### BRED HEIFERS: Medium and Large 1 956-980 lbs. Under 2 yrs.

1st stage	3300.00; 2nd-3rd stage
3500.00-3650.00	

### SOUTH CENTRAL MISSOURI WEEKLY SUMMARY

(West Plains, Phillipsburg)  
Receipts: 2,930 Week ago: 3,817 Year Ago: 4,066

Compared to last week, feeders were uneven from 7.00 lower to 12.00 higher, Slaughter cows sold 2.00 lower to 4.00 higher and bulls steady to 2.00 lower.

#### FEEDER STEERS:

Medium and Large 1

300-400 lbs.	455.00-495.00
400-500 lbs.	420.00-485.00
500-600 lbs.	373.00-430.00
600-700 lbs.	332.50-380.00
750-800 lbs.	347.50

#### FEEDER HOLSTEIN STEERS:

Large 3

Scarce

#### FEEDER HEIFERS:

Medium and Large 1

300-400 lbs.	400.00-435.00
400-500 lbs.	370.00-425.00
500-600 lbs.	352.50-380.00
600-700 lbs.	332.50-345.00
750-800 lbs.	312.50
850-900 lbs.	308.00

#### SLAUGHTER COWS: Breaking and Boning (70-85% lean)

140.00-	-159.00; high dressing
154.00-	167.00; low dressing
129.00-	147.00. Lean (85-90%)
125.00-	145.00, high dressing
143.00-	155.00 low dressing
109.00-	125.00

#### SLAUGHTER BULLS: Yield

Grade 1-2 1260-2115 lbs.	169.50-
189.00; high dressing	190.00-
208.00; low dressing	150.00-
172.00	

BRED COWS: Medium and Large 1-2 1130-1470 2nd-3rd stage 2-8 yrs 2050.00-3500.00

COW CALF PAIRS: Medium and Large 1-2 with Over 300 lb calves 2-8 yrs 1st-2nd stage 3600.00-4100.00

### WEST CENTRAL MISSOURI WEEKLY SUMMARY

(Kingsville, Windsor, Butler, Osceola)  
Receipts: 6,125 Week ago: 4,777 Year ago: 4,355  
Compared to last week, feeders were uneven from 10.00 lower to 10.00 higher, Slaughter cows sold 3.00 lower to 3.00 higher.

#### FEEDER STEERS:

Medium and Large 1

300-400 lbs.	445.00-530.00
400-500 lbs.	425.00-510.00
500-600 lbs.	360.00-460.00
600-700 lbs.	345.00-394.00
700-800 lbs.	330.00-345.50
800-900 lbs.	335.25-365.00
900-1000 lbs.	291.00-306.50

#### SLAUGHTER BULLS: Yield

Grade 1-2 1084-2335 lbs.	170.00-
205.00; high dressing	194.00-
212.00; low dressing	150.00-
174.00	

#### BRED COWS: Medium and Large

1-2 1160-1630 lbs. 2-8 yrs. 2nd-3rd stage	2400.00-3000.00
---	-----------------

#### FEEDER HEIFERS:

Medium and Large 1

300-400 lbs.	382.00-445.00
400-500 lbs.	370.00-435.00
500-600 lbs.	323.00-390.00
600-700 lbs.	303.00-370.00
700-800 lbs.	295.00-355.50
800-850 lbs.	324.50-334.00

#### SLAUGHTER COWS: Breaking and Boning (70-85% lean)

138.00-	169.00, high dressing
155.00-	177.00, low dressing
130.00-	150.00 Lean (85-90%)
118.00-	153.00, low dressing
95.00-126.00	

#### COW & CALF PAIRS: Scarce

### NORTHEAST MISSOURI WEEKLY SUMMARY

(Bowling Green, Kingdom City, Palmyra)  
Receipts: 2,941 2 Weeks ago: 5,373 Year ago: 3,361  
Compared to last week, light weight steers and heifers sold with a lower undertone, the heavier weights sold 5.00-15.00 lower. Slaughter cows sold steady to 3.00 higher.

#### FEEDER STEERS:

Medium and Large 1

400-500 lbs.	429.00-465.00
500-600 lbs.	398.00-408.00
600-700 lbs.	348.00-383.75
700-750 lbs.	347.50
800-900 lbs.	323.50-338.75
900-950 lbs.	314.00-322.25

#### SLAUGHTER BULLS: Yield

Grade 1-2 1375-2330 lbs.	188.00-
195.00; high dressing	168.00-
185.00	

#### SLAUGHTER STEERS: Choice

2-3 214.00-218.00; Select and Choice 1-3 212.00-213.00; and Choice 2-3 216.00-217.00	
--	--

#### FEEDER HEIFERS:

Medium and Large 1

350-400 lbs.	403.00-443.00
400-500 lbs.	381.00-437.00
500-600 lbs.	368.00-380.00
600-700 lbs.	325.00-349.75
700-750 lbs.	330.00-338.00
800-850 lbs.	291.25

#### SLAUGHTER COWS: Breaking and Boning (70-85% lean)

146.00-	159.00; high dressing
159.00-	173.00; low dressing
133.00-	147.00 Lean (85-90%)
139.00-	153.00; low dressing
120.00-	134.00

#### SLAUGHTER HEIFERS: Choice

2-3 214.00-222.50; Select and Choice 1-3 212.00; Select and Choice 2-3 216.50	
---	--

#### BRED COWS: Scarce

#### COW CALF PAIRS: Scarce

### NORTH CENTRAL MISSOURI WEEKLY SUMMARY

(Macon, Unionville, Green City, New Cambria)  
Receipts: 800 Week ago: 4,015 Year ago: 1,086

Not enough feeders for a test of the market this week. Slaughter cows sold steady.

#### FEEDER STEERS:

Medium and Large 1

450-500 lbs.	445.00
500-600 lbs.	395.00-431.50
600-700 lbs.	364.00-373.50

#### SLAUGHTER BULLS: Yield

Grade 1-2 1405-2200 lbs.	181.00-
202.00, low dressing	171.00-
185.00	

#### BRED COWS: Medium and Large 1 1315-1375 lbs. 2-8 yrs.

2nd stage	3350.00-3600.00, 3rd stage 3800.00, 5-8 yrs. 2nd stage 3200.00
-----------	--

#### FEEDER HEIFERS:

Medium and Large 1

350-400 lbs.	452.50
400-500 lbs.	397.00-400.50
500-550 lbs.	385.00

#### SLAUGHTER COWS: Breaking and Boning (70-85% lean)

149.00-	-164.00; high dressing
160.00-	172.00; low dressing
131.00-	147.00 Lean (85-90%)
135.00-	156.00; low dressing
127.50-	138.00

#### COW CALF PAIRS: Medium and Large 1 with 150-300 lb. calves 2-8 yrs.

Open 4100.00-4800.00; Over 5 yrs. Open 3500.00-3700.00	
--	--

**SOUTHEAST MISSOURI WEEKLY SUMMARY**

(Jackson and Farmington)

Receipts: 1,272 Week ago: 1,141 Year ago: 1,687

Compared to last week, feeders were mixed 14.00 lower to 16.00 higher. Slaughter cows and bulls 2.00-3.00 higher.

**FEEDER STEERS:**  
Medium and Large 1

300-400 lbs. 380.00-447.00  
400-500 lbs. 375.00-432.00  
500-600 lbs. 355.00-397.00  
600-700 lbs. 302.00-375.00  
700-800 lbs. 307.00-317.00  
800-850 lbs. 305.00-310.00

**FEEDER HEIFERS:**  
Medium and Large 1

300-400 lbs. 357.00-405.00  
400-500 lbs. 330.00-400.00  
500-600 lbs. 300.00-375.00  
600-700 lbs. 310.00-340.00  
700-800 lbs. 280.00-338.00  
850-900 lbs. 285.00-295.00

**SLAUGHTER BULLS:** Yield  
Grade 1-2 1305-2350 lbs 159.00-  
175.00, high dressing 177.00-  
201.00

**SLAUGHTER COWS:** Breaking  
and Boning (75-85% lean)  
139.50-154.00; high dressing  
155.00-167.00; low dressing  
125.00-137.00; Lean (85-90%  
lean) 110.00-127.00; high dressing  
127.00-150.00

**BRED COWS:** Medium and Large  
2 1020-1495 lbs 2-8 yrs 2nd stage  
1600.00-2300.00 per head

**COW & CALF PAIRS:** Scarce

**EAST CENTRAL MISSOURI WEEKLY SUMMARY**

(Cuba, Vienna)

Receipts: 2,177 Week Ago: 2,481 Year ago: 1,837

Compared to last week, feeders sold uneven from 10.00 lower to 10.00 higher. Slaughter cows and bulls sold steady to 5.00 higher.

**FEEDER STEERS:**  
Medium and Large 1

300-400 lbs. 470.00-497.50  
400-500 lbs. 423.00-479.00  
500-600 lbs. 381.00-446.00  
600-700 lbs. 356.00-399.00  
700-800 lbs. 335.00-341.00  
800-900 lbs. 319.00-323.00

**FEEDER HEIFERS:**  
Medium and Large 1

300-400 lbs. 416.00-420.00  
400-500 lbs. 394.00-422.50  
500-600 lbs. 350.00-379.00  
600-700 lbs. 329.00-342.00  
700-800 lbs. 326.00-330.00  
800-850 lbs. 307.00

**SLAUGHTER BULLS:** Yield  
Grade 1-2 1290-2130 lbs 160.00-  
188.00; low dressing 142.00-  
169.50

**SLAUGHTER COWS:** Breaking  
and Boning, (70-85% lean) 141.00-  
160.50, high dressing 153.00-  
179.00; Lean (85-90%) 127.00-  
142.00, high dressing 140.00-  
155.00, low dressing 109.00-  
129.00

**BRED COWS:** Medium and  
Large 1, 1248 lbs., 5-8 yrs., 2nd  
stage, 3225.00 per head; Medium  
and Large 1-2, 1308-1345 lbs.,  
Over 5 yrs., 2nd stage, 2550.00-  
2700.00

**BRED HEIFERS:** Medium and  
Large 1 901-1282 lbs., Under 2  
yrs., 1st stage, 3425.00; 2nd stage  
4000.00-4275.00.

**NORTHWEST MISSOURI WEEKLY SUMMARY**

(Tina)

Receipts: 1,521 Last reported: 954 Year ago: 1,086

Compared to last week, feeder steers sold steady to 8.00 higher, with 600-700 lb steers up to 12.00 higher. Feeder heifers mostly steady with spots up to 12.00 higher. Slaughter cattle sold 3.00-5.00 lower.

**FEEDER STEERS:**  
Medium and Large 1

300-400 lbs. 517.50-523.00  
400-500 lbs. 455.00-480.00  
500-600 lbs. 421.00-445.00  
600-700 lbs. 370.00-417.00  
850-900 lbs. 341.25  
900-950 lbs. 337.00

**FEEDER HEIFERS:**  
Medium and Large 1

300-400 lbs. 430.00-447.50  
400-500 lbs. 400.00-415.00  
500-600 lbs. 370.00-384.50  
600-700 lbs. 361.00-371.75  
700-800 lbs. 324.00-337.50  
800-900 lbs. 323.75

**SLAUGHTER BULLS:** Scarce

**SLAUGHTER COWS:** Breaking  
and Boning, (70-85% lean) 144.00-  
163.50, high dressing 156.00-  
168.00, low dressing 135.50-  
147.00; Lean (85-90%) 125.00-  
140.00, high dressing 140.00-  
145.50, low dressing 117.00-128.00

**BRED COWS:** Scarce

**COW/CALF PAIRS:** Scarce

**AFTERNOON NATIONAL SLAUGHTER CATTLE REVIEW**

So far for Friday, negotiated cash trade has been mostly inactive on moderate demand in all feeding regions. The last established market in the Texas Panhandle was Wednesday at 224.00. The last established market test in Kansas was Wednesday at 224.00. The last established market test in Nebraska was Wednesday with live purchases from mostly 218.00-219.00 and dressed purchases from 340.00-347.00. The last established live market in the Western Cornbelt was Thursday from 215.00-218.00, mostly 215.00. The last established dressed market in the Western Cornbelt was Wednesday from 340.00-347.00.

**Negotiated Cash Sales:**

<b>Confirmed:</b>	1,707	<b>Week Ago:</b>	2,652	<b>Year Ago:</b>	18,852
<b>Week to date:</b>	55,903	<b>Week Ago:</b>	53,960	<b>Year Ago:</b>	53,413

<b><u>Live Basis</u></b>	<b><u>Steers</u></b>	<b><u>Heifers</u></b>
<b>Over 80% Choice</b>	210.00-215.00 avg 211.07	212.00-215.00 avg 213.85
<b>65-80% Choice</b>	-	218.00-218.00 avg 218.00
<b>35-65% Choice</b>	-	-
<b>0-35% Choice</b>	-	-
<b>Total All Grades</b>	210.00-215.00 avg 211.07	212.00-218.00 avg 215.25
<b><u>Dressed Basis</u></b>		
<b>Over 80% Choice</b>	338.00-338.00 avg 338.00	-
<b>65-80% Choice</b>	-	-
<b>35-65% Choice</b>	-	-
<b>0-35% Choice</b>	-	-
<b>Total All Grades</b>	338.00-338.00 avg 338.00	-

<b><u>All Beef Type Steers/Heifers</u></b>	<b><u>Head</u></b>	<b><u>Avg Wt</u></b>	<b><u>Price Range</u></b>	<b><u>Wtd Avg</u></b>
Live FOB	1,052	1,483.7	210.00-220.00	214.18
Live Del	410	1,478.3	210.00-224.00	216.72
Dressed Del	245	1,018.1	335.00-340.00	337.64
Dressed FOB	-	-	-	-

**WEEKLY COMMODITY FUTURES TRENDS**

Compared to last week, Live Cattle 2.93 to 4.75 lower, Lean Hogs 0.70 to 1.85 lower, Feeder Cattle 5.18 to 6.33 lower.

**Daily Futures Closes**

	Mon.	Tues.	Wed.	Thu.	Fri.
<b>Cattle</b>					
Dec	221.27	220.02	216.30	214.72	214.45
Feb	221.77	220.85	217.25	215.40	214.77
Apr	221.82	221.32	217.80	215.57	215.15
Jun	215.10	214.95	211.65	209.20	208.97
Aug	211.22	211.25	208.25	205.72	205.62
<b>Lean Hogs</b>					
Dec	78.57	77.90	78.85	79.47	77.80
Feb	79.42	78.02	79.02	79.65	77.70
Apr	83.02	81.62	83.07	83.72	81.30
May	86.40	85.17	86.75	87.35	84.80
Jun	94.80	93.52	95.12	95.67	93.30
<b>Fdr Cattle</b>					
Nov	339.85	340.77	341.85	340.65	—
Jan	326.27	326.05	321.45	316.37	314.22
Mar	318.55	318.40	313.40	308.55	307.05
Apr	315.82	315.75	310.72	306.55	305.35
May	312.92	312.90	308.05	304.25	303.32
<b>Milk</b>					
Nov	17.21	17.23	17.21	17.21	17.17
Dec	16.85	16.96	16.63	16.32	16.10
Jan	16.00	15.98	15.69	15.48	15.15

## WEEKLY COMMODITY GRAIN FUTURES TRENDS

Compared to last week, Soybeans steady to 0.04 lower, Wheat steady to 0.07 lower, Corn 0.04 to 0.07 lower, KC Wheat 0.01 to 0.05 lower, Soybean Meal 0.60 to 7.40 lower.

Daily Grain Futures Closes

	Mon.	Tues.	Wed.	Thu.	Fri.
<b>Soybeans</b>					
Jan	1157 1/4	1153 1/2	1136 1/4	1122 1/2	1125
Mar	1163 1/4	1160 1/4	1144 1/2	1132	1134 1/4
May	1170	1167 1/4	1152 1/2	1141 1/2	1143 1/4
Jul	1175 1/4	1172	1158 1/4	1148	1149 1/4
Aug	1161	1158 1/2	1147	1138	1138
<b>Wheat</b>					
Dec	544 1/4	546 1/2	536 3/4	527	527
Mar	558 1/2	559	549 1/2	540 3/4	539 3/4
May	568 1/4	568 1/2	558 1/2	549 3/4	548 1/4
Jul	577 3/4	577 1/2	567	558 1/2	557
Sep	590 1/2	589 3/4	579	570 1/4	569
<b>Corn</b>					
Dec	434 3/4	436 3/4	429 3/4	426 1/2	425 1/2
Mar	448	449 1/2	441 1/2	437 3/4	437 1/2
May	455 1/2	456 1/2	449	445 1/4	444 3/4
Jul	460 3/4	461 3/4	454 3/4	451	450 3/4
Sep	457 3/4	457 1/2	451 1/4	448 1/4	447 1/2
<b>KC Wheat</b>					
Dec	528 3/4	526 1/4	515 1/2	506 1/4	511
Mar	544 3/4	543	531 3/4	523 3/4	526 1/4
May	556 1/2	555 1/2	544 1/4	536 1/2	538 1/4
Jul	569	568	557 1/4	549 1/4	550 3/4
Sep	583 3/4	582 3/4	572	563 1/2	564 3/4
<b>SB Meal</b>					
Dec	330.80	327.00	318.90	314.00	315.10
Jan	332.60	328.50	321.70	317.60	319.20
Mar	335.10	331.40	326.20	322.70	324.70
May	338.20	334.90	331.00	328.20	330.30
Jul	341.70	338.40	335.70	333.40	335.70

## MISSOURI GRAIN WEEKLY TRENDS

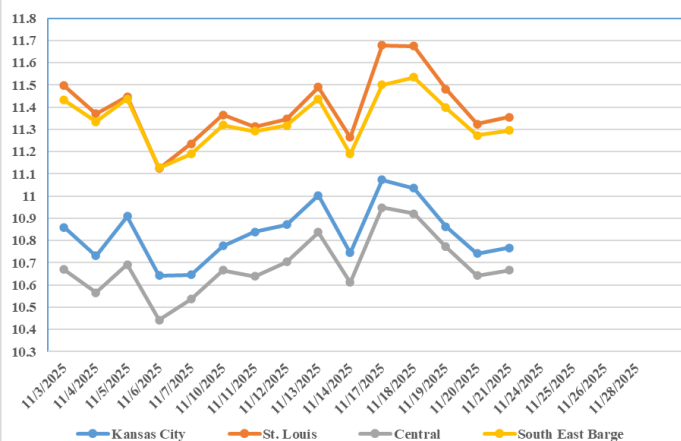
Compared to last week, Soybeans 0.14 lower to 0.12 higher, Wheat unchanged, Corn unchanged to 0.07 lower, Sorghum unchanged to 0.05 lower.

Area	#1 Soybeans	#2 Soft Wheat	#2 Corn	#2 Grain Sorghum
<b>Kansas City</b>				
Friday**	10.59-10.99	5.02	4.25	3.55
Monday	10.92-11.32	5.19	4.29	3.59
Tuesday	10.88-11.28	5.21	4.31	3.61
Wednesday	10.71-11.11	5.11	4.24	3.54
Thursday	10.57-11.02	5.02	4.26	3.51
Friday	10.60-11.05	5.02	4.25	3.50
<b>St. Louis</b>				
Friday**	11.26	5.01-5.49	4.47	4.10
Monday	11.63-11.72	5.18-5.66	4.49-4.52	4.19
Tuesday	11.65-11.69	5.20-5.68	4.53	4.21
Wednesday	11.45-11.51	5.10-5.58	4.45	4.14
Thursday	11.30-11.34	5.01-5.49	4.41	4.11
Friday	11.33-11.38	5.01-5.49	4.40	4.10
<b>Central</b>				
Friday**	10.54-10.64	4.77	4.00-4.05	—
Monday	10.87-11.00	4.94	4.04-4.09	—
Tuesday	10.86-10.96	4.96	4.06-4.11	—
Wednesday	10.69-10.81	4.86	3.99-4.04	—
Thursday	10.57-10.67	4.77	3.96-4.01	—
Friday	10.60-10.70	4.77	3.95-4.00	—
<b>S.E. MO</b>				
Friday**	11.14-11.26	—	4.41-4.45	—
Monday	11.47-11.52	—	4.45-4.49	—
Tuesday	11.51-11.58	—	4.47-4.51	—
Wednesday	11.35-11.41	—	4.40-4.44	—
Thursday	11.26-11.27	—	4.38-4.41	—
Friday	11.28-11.30	—	4.37-4.40	—

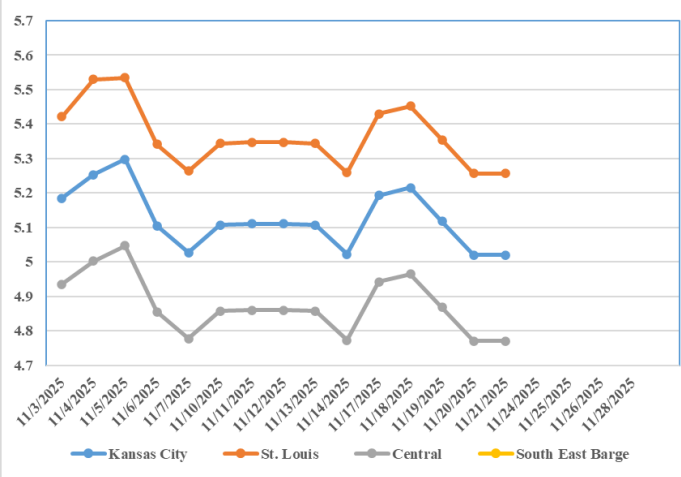
(PRICES PER BUSHEL) \*NEW CROP \*\*PREVIOUS WEEK'S PRICES  
\*Bids calculated using Kansas City, St. Louis, and St. Joseph bids

## MONTHLY GRAIN CROP

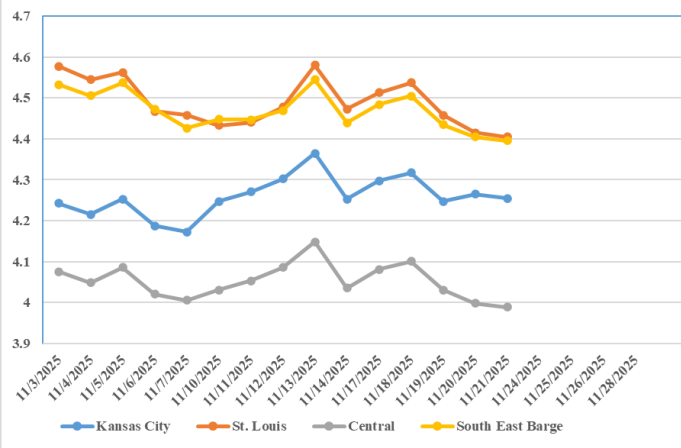
November 2025 Soybean Bids



November 2025 Wheat Bids



November 2025 Corn Bids



\*Axis value ranges may be updated to reflect data points.  
Only dates in which markets are trading and only current cash bids are represented.

## WHOLESALE FEEDSTUFFS PRICES (DOLLARS PER TON-BULK BASIS)

Area	Cottonseed Meal 41%	Soybean Meal 46.5-48%	Corn Gluten Pellets 21%	Wheat Middlings
Kansas City	295.00	311.50	213.67	196.67
St. Louis	290.00	N/A	198.00	167.50



## MISSOURI CROP PROGRESS REPORT 11/17/25

There were 6.7 days suitable for fieldwork in the week ending Nov 16, 2025. Topsoil moisture supply was rated 16 percent very short, 41 percent short, 43 percent adequate, and 0 percent surplus. Subsoil moisture supply was rated 15 percent very short, 41 percent short, 44 percent adequate, and 0 percent surplus. Corn harvested is at 92 percent, compared to the 5 year average of 95 percent. Soybean harvest is at 89 percent completed, compared to the 5 year average of 90 percent. Winter wheat planted is at 82 percent which compares to the 5 year average of 90 percent. Winter wheat emerged is at 56 percent, compared to the 5 year average of 74 percent. Winter wheat condition was rated 0 percent very poor, 2 percent poor, 34 percent fair, 62 percent good, and 2 percent excellent. Pasture conditions were not made available.

	Week Ending			5 yr average
	11/16/24	11/9/24	11/16/25	
Corn Harvested	95	n/a	92	95
Soybeans Harvested	93	n/a	89	90
Winter Wheat Planted	91	n/a	82	90
Winter Wheat Emerged	75	n/a	56	74

## CATTLE ON FEED

### **United States Cattle on Feed Down 2 Percent**

**Cattle and calves on feed** for the slaughter market in the United States for feedlots with capacity of 1,000 or more head totaled 11.7 million head on November 1, 2025. The inventory was 2 percent below November 1, 2024.

**Placements** in feedlots during October totaled 2.04 million head, 10 percent below 2024. Net placements were 1.99 million head. Placements were the lowest for October since the series began in 1996. During October, placements of cattle and calves weighing less than 600 pounds were 515,000 head, 600-699 pounds were 420,000 head, 700-799 pounds were 445,000 head, 800-899 pounds were 384,000 head, 900-999 pounds were 195,000 head, and 1,000 pounds and greater were 80,000 head.

**Marketings** of fed cattle during October totaled 1.70 million head, 8 percent below 2024.

**Other disappearance** totaled 54,000 head during October, 2 percent below 2024.

## MISSOURI WEEKLY HAY SUMMARY 11/14/2025

Not much has changed over the last couple of weeks, moisture has continued to elude the state, as the days have rolled on the growing season has come to an end with the first real cold snap of the year. Grain harvest is generally done for most and some fall tillage is taking place. The supply of hay is moderate, demand and movement has been moderate. Prices are mostly steady. The Missouri Department of Agriculture has a hay directory at <https://apps.mda.mo.gov/haydirectory> or visit the University of Missouri Extension feed stuff finder at <https://feedstufffinder.org>

Alfalfa - Supreme 250.00-300.00, small square 10.00-15.00 per bale  
Alfalfa - Premium 175.00-225.00  
Alfalfa - Good 150.00-175.00, small square 6.00-10.00 per bale  
Alfalfa - Fair 125.00-150.00  
Mixed Grass—Premium 150.00-200.00  
Mixed grass - Good/Premium 100.00-150.00  
Mixed grass-Fair/Good 75.00-125.00, small square 3.00-7.00 per bale  
Mixed grass - Fair 20.00-50.00 per large round bale  
Wheat straw - 4.00-7.00 per small square bale

Please Note: The above volumes (tonnage, acres, and bales) listed are for confirmed trades only, it does not include estimated volume (tonnage) for bids or offers to the trade. List your hay for sale at: [Hay Listing Online Form](#). Explanation of Hay Quality Guidelines: [Hay Quality Designation Guidelines](#). Glossary of Terms: [Livestock, Poultry, & Grain Hay Terms](#)

## MISSOURI WEEKLY SHEEP/GOAT AUCTION SUMMARY 11/25/25

Receipts: 5,519 Week Ago: 770 Last Year: 955  
SHEEP: Feeder Lambs: Small and Medium 1-2 hair 30-50 lbs 305.00-405.00. Slaughter Lambs: Choice and Prime 1-2 woolled and shorn 60-70 lbs 295.00-325.00; 70-80 lbs 242.50-290.00; pkg 97 lbs 240.00. Choice and Prime 1-3 hair 50-60 lbs 285.00-337.50; 60-70 lbs 282.50-325.00; 70-80 lbs 240.00-310.00; 80-100 lbs 207.00-275.00. Slaughter Ewes: Good 2-3 hair 80-100 lbs 130.00-155.00; 100-150 lbs 130.00-140.00. Utility and Good 1-3 hair 80-100 lbs 100.00-127.50; 100-125 lbs 120.00-122.00. Bucks 1-2 hair 100-150 lbs 120.00-145.00; 150-200 lbs 100.00-155.00. Replacement Ewes: Small and Medium 1-2 (per head) 1-2 yrs 80-100 lbs exp 140.00-190.00; 2-4 yrs 110-160 lbs exp 160.00-220.00; 4-6 yrs 90-140 lbs exp 145.00-200.00.

GOATS: Feeder Kids: Selection 1 25-50 lbs 295.00-440.00. Selection 1-2 30-51 lbs 275.00-360.00. Selection 2 30-50 lbs 240.00-330.00. Slaughter Kids: Selection 1 50-60 lbs 285.00-400.00; 60-70 lbs 285.00-382.50; 70-80 lbs 282.50-350.00; 80-90 lbs 325.00-340.00. Selection 1-2 50-60 lbs 315.00-340.00; 80-90 lbs 225.00-250.00. Selection 2 50-60 lbs 250.00-325.00; 60-70 lbs 270.00-330.00; 70-80 lbs 215.00-315.00; 80-90 lbs 222.50-265.00. Nannies Selection 1-2 60-70 lbs 122.50-165.00; 70-80 lbs 130.00-145.00; 80-90 lbs 120.00-162.50; 90-100 lbs 125.00-170.00; 100-140 lbs 125.00-175.00. Bucks Selection 1-2 100-145 lbs 182.50-280.00; 150-200 lbs 185.00-260.00. Replacement Nannies Selection 1-2 (per head) 2-4 yrs 100-110 lbs exp 185.00; 4-6 yrs 105-120 lbs exp 155.00-185.00.

Explanatory Notes: Stage - Represents estimated lambing/kidding period (Open, Exp=exposed, Bred, Fall = Sep-Nov, Win = Dec-Feb, Spr = Mar-May, Sum=Jun-Aug; w/s = woolled and shorn; /hd= per head; /fam=per family  
All price CWT unless otherwise noted.

## MISSOURI DROUGHT MONITOR

Date	None	D0	D1	D2	D3	D4
11/18/25	6.74	29.41	42.08	21.77	0.0	0.0
11/13/25	8.71	27.84	44.01	19.44	0.0	0.0
11/19/24	47.75	25.23	27.02	0.0	0.0	0.0

Reflects percentage of Missouri impacted by drought. D0 Abnormally Dry; D1 Moderate Drought; D2 Severe Drought; D3 Extreme Drought; D4 Exceptional Drought

## NATIONAL DIRECT DELIVERED FEEDER PIG REPORT

11/21/25 Receipts: 95,125 Week ago: 103,296 Year Ago: 82,797  
Early weaned pigs are weak to 3.00 lower and feeder pigs are mostly 1.00 lower.

Cash 53,880 head 47.00-75.00, weighted average 63.77

Formula 26,520 head 50.02-74.62, weighted average 56.99

Feeder pigs 40 pounds basis: Cash 14,725 head 72.00-86.00, weighted average 80.82

## NATIONAL DAILY DIRECT PRIOR DAY HOG REPORTS 11/21/25

BARROWS AND GILTS (Carcass Basis): 1,948 head  
Base Carcass Price 69.00-81.00, weighted average 70.80

SOWS (Live Basis): 7,072 head  
300-500 lbs. 29.00-85.00  
Over 500 lbs. 44.00-88.00

## MISSOURI WEEKLY DIRECT SLAUGHTER CATTLE REPORT 11/21/25

Weekly Receipts: 0 Week ago: 0 Year ago: 340  
Trading as of Friday morning is inactive as producers are passing lower bids.

LIVE STEERS & HEIFERS: No sales reported. DRESSED STEERS & HEIFERS: No sales reported.

GRADE AND EIGHT (Grid): No sales reported.

Click here for the current [National Crop Progress](#)  
Click here for the current [Missouri Crop Progress](#)  
The current hay directory can be found at: [Hay Directory](#).