

Weekly Market Summary

Published by:
Missouri Department of Agriculture
Ag Business Development Division
Market News Program



Chris Chinn, Director
Jill Wood, Division Director
Tony Hancock, Editor
<http://www.ams.usda.gov/marketnews.htm>
[agmarketnews.mo.gov](http://www.ams.usda.gov/marketnews.htm)

Michael Kehoe, Governor

Volume XLV, Number 51 ♦ P.O. Box 630, Jefferson City, MO 65102 ♦ (573) 751-4211 ♦ Mon, Dec 22, 2025

MISSOURI WEEKLY FEEDER CATTLE WEIGHTED AVERAGE REPORT

Feeder Cattle Receipts: 34,143 Week ago: 43,387 Year ago: 25,278
Steers and Heifers Medium and Large 1—Weighted average weights and prices

STEERS: Medium and Large 1

328 lbs.	539.37	524 lbs.	455.21	725 lbs.	367.49	924 lbs.	322.04
372 lbs.	539.32	572 lbs.	431.11	776 lbs.	355.10		
423 lbs.	506.65	621 lbs.	406.81	824 lbs.	347.65		
472 lbs.	488.64	669 lbs.	387.38	878 lbs.	332.06		

HEIFERS: Medium and Large 1

326 lbs.	492.28	524 lbs.	400.46	724 lbs.	345.65	915 lbs.	301.36
374 lbs.	463.07	572 lbs.	379.91	763 lbs.	323.96		
422 lbs.	452.03	623 lbs.	370.09	825 lbs.	314.75		
470 lbs.	429.83	672 lbs.	358.53	875 lbs.	302.31		

MISSOURI STEER (HEIFER) STOCKER FORMULA 12/22/2025

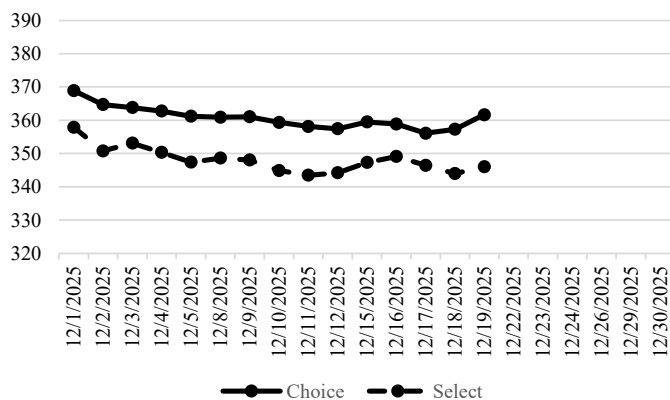
Monday's Missouri Stocker formula consists of **7091 (6061)** head with a weighted average weight of **541.43 (536.18)** lbs. and a price value of **434.89 (387.86)**, **8.79** higher (6.83 higher) than a week ago.

This a rolling seven day calculated weighted value which combines all Feeder Steers reported by MDA/USDA Market News Service weighing from 400-649 lbs. in the Medium and Large 1 and Medium and Large 1-2 frame and muscle classifications, including all comment cattle except Brahman X. Heifer values are in parentheses.

NATIONAL BOXED BEEF CUTOUT VALUES

DATE	CHOICE	SELECT	TOTAL LOADS
12/18	357.28	343.97	89
12/17	356.09	346.43	170
12/16	358.88	349.10	119
12/15	359.46	347.30	114
12/12	357.44	344.20	120
5 Day Simple Average	357.83	346.20	

Boxed Beef Cuts December 2025



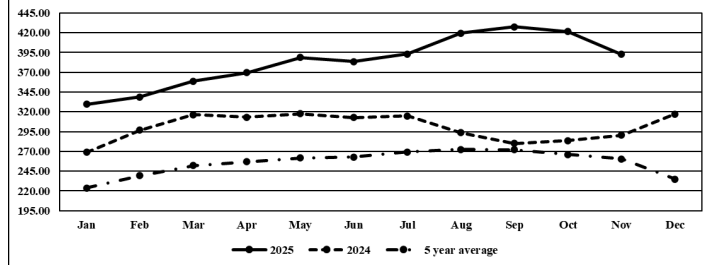
*Axis value ranges may be updated to reflect data points.

WEEKLY LIVESTOCK SLAUGHTER 12/20/25

	CATTLE	HOGS	SHEEP
Week to Date:	587,000	2,683,000	40,000
Last Week:	596,000	2,722,000	40,000
Last Year:	615,629	2,585,327	41,342

The Weekly Market Summary, as well as historical summaries, are available on our website <https://agmarketnews.mo.gov/summaries>
Market News Hotline: 1-573-522-9244
Check out the latest updates on our YouTube Channel: [MDA Market News](https://www.youtube.com/channel/UCM4M4M4M4M4M4M4M4M4M4M4)

Missouri Stocker Formula - Steers



*Graph is updated the first Monday of each month. Axis value ranges may be updated to reflect data points.

MISSOURI WEEKLY CATTLE AUCTION SUMMARY

Total Receipts: 42,035 Week Ago: 54,320 Year Ago: 30,278

Compared to last week, feeders sold Steady to 10.00 higher with instances of 20.00 higher mostly calves under 600 lbs. The last full business week of the year didn't disappoint as cash feeders continue to push to higher levels. Lighter weight calves are getting back very close all-time record highs once again. Although yearlings have gained back some ground from the records seen in Oct., they still have several dollars to go before getting back to record levels. Time of year likely the biggest reason as lighter weight grazing types that can head to wheat and add some quick gains are just more in demand currently. The monthly Cattle on Feed Report was released on Friday. The report should be viewed as neutral compared to pre-report expectations as all numbers were within the ranges of estimates, overall, however it continues to paint a bullish picture of light supplies. On Feed numbers were reported at 97.8 percent, Marketings at 88.1 percent and Placements at 88.8 percent of year ago levels. Stick out sales this week included: 21 head of 454 lb. steers at Windsor Livestock Auction that sold for 545.00. Kingsville Livestock Auction sold 34 head of 546 lb. steers for 477.50 and 69 head of 650 lbs. steers for 407.00. Tina Livestock Market sold 26 head of 566 lbs. steers for 472.00. New Cambria Livestock Auction sold 21 head of 617 lb. steers for 431.00. Lolli Brother Livestock Market sold 41 head of 740 lb. steers for 398.50. Joplin Regional Stockyards sold 97 head of 765 lbs. steers for 375.00 and 218 head of 932 lb. steers for 324.00. Callaway Livestock Center sold 133 head of 802 lb. steers for 368.00 and 60 head of 864 lb. steers for 351.75. On the heifer side of the market 24 head of 520 lb. heifers at Wheeler Livestock Auction sold for 464.00. Lolli Brothers Livestock Auction sold 234 head of 706 lb. heifers for 360.10. Boxed beef cutout values closed higher for the week. Choice closed on Friday at 361.63, up 4.19 and select closed at 346.02, up 1.80 compared to last week. Negotiated feedlot sales as of the 2:00 cutoff time on Friday afternoons report came in just under 32K head. Volume was very light ahead of the short holiday weeks ahead and following last week's very large volume. Nearly all the trade this week was in the north live prices were about a buck lower at 228.00. Dressed prices were stronger from 355.00-358.00. The Missouri Stocker formula consists of 7091 head with a weighted average weight of 541.43 lbs. and a price value of 434.89, 8.79 higher than last week. The steer/heifer spread is 47.03.

SOUTHWEST MISSOURI WEEKLY SUMMARY

(Joplin, Springfield, Exeter)

Receipts: 16,724 Week ago: 23,771 Year Ago: 9,137

Compared to last week, feeders sold 5.00-15.00 higher, spots 25.00 higher. A few very light weights early week sold mixed compared to last weeks sharp upturn. Slaughter cows sold 2.00 lower to 3.00 higher.

FEEDER STEERS:

Medium and Large 1

200-300 lbs.	600.00-640.00
300-400 lbs.	500.00-601.00
400-500 lbs.	450.00-537.00
500-600 lbs.	395.00-477.50
600-700 lbs.	360.00-425.00
700-800 lbs.	340.00-375.00
800-900 lbs.	321.00-357.00
900-950 lbs.	315.00-325.00

FEEDER HOLSTEIN STEERS

Large 3

Scarce

FEEDER HEIFERS:

Medium and Large 1

200-300 lbs.	495.00-550.00
300-400 lbs.	420.00-540.00
400-500 lbs.	390.00-500.00
500-600 lbs.	355.00-420.00
600-700 lbs.	337.00-379.00
700-800 lbs.	316.00-350.00
800-900 lbs.	297.00-316.00
900-950 lbs.	297.00-303.00

SLAUGHTER COWS: Breaking

and Boning (70-85% lean) 135.00-164.00; high dressing 154.00-179.00; low dressing 125.00-149.00 Lean (85-90%) 122.50-147.00; high dressing 137.50-155.00; low dressing 80.00-127.00

SLAUGHTER BULLS: Yield

Grade 1-2 1250-2405 lbs. 170.00-207.00; high dressing 190.00-223.00; low dressing 142.00-181.00.

BRED COWS: Medium and Large 1, 1095-1670 lbs., 2nd -3rd stage, 2-8 yrs. 2800.00-4300.00; over 8 yrs. 3000.00-3100.00 per head

BRED HEIFERS: Medium and Large 1 1 1/2-4 yrs 919-1280 lbs 2nd and 3rd stage 3900.00-4600.00 per head

COW CALF PAIRS: Medium and Large 1 with baby to 300 lb. calves, 2-8 yrs., Open, 4500.00-5150.00 per pair;

Medium and Large 1-2 with baby to 300 lb. calves, 2-8 yrs. Open 3300.00-4300.00 per pair

SOUTH CENTRAL MISSOURI WEEKLY SUMMARY

(West Plains, Phillipsburg)

Receipts: 4,328 Week ago: 7,096 Year Ago: 3,222

Compared to last week, feeders sold steady to 12.00 higher, with some spots of 20.00-40.00 higher. Slaughter cows sold steady to 7.00 higher.

FEEDER STEERS:

Medium and Large 1

300-400 lbs.	520.00-585.00
400-500 lbs.	472.50-540.00
500-600 lbs.	402.50-477.00
600-700 lbs.	375.00-407.50
700-800 lbs.	347.50-367.50
800-900 lbs.	323.50-343.00

FEEDER HOLSTEIN STEERS:

Large 3

400-450 lbs. 265.00

FEEDER HEIFERS:

Medium and Large 1

300-400 lbs.	440.00-515.00
400-500 lbs.	412.50-457.50
500-600 lbs.	365.00-415.00
600-700 lbs.	332.50-398.00
700-800 lbs.	319.00-335.00

SLAUGHTER COWS: Breaking

and Boning (70-85% lean) 145.50-165.50; high dressing 163.00-177.00; low dressing 131.00-149.00 Lean (85-90%) 125.00-144.00, high dressing 145.00-161.00 low dressing 104.00-125.00

SLAUGHTER BULLS: Yield

Grade 1-2 1195-2005 lbs. 170.00-189.00; high dressing 190.00-198.00; low dressing 152.50-165.00

BRED COWS: Medium and Large 1-2 965-1400 lbs. 2-8 yrs. 1st stage, 2500.00-2600.00; 2nd-3rd stage 1975.00-3650.00; Over 8 years, 2nd-3rd stage 2250.00-2850.00

COW CALF PAIRS: Scarce**WEST CENTRAL MISSOURI WEEKLY SUMMARY**

(Kingsville, Windsor, Butler, Osceola)

Receipts: 5,666 Week ago: 8,948 Year ago: 3,811

Compared to last week, feeders sold steady to 15.00 higher, spots 20.00 higher. Slaughter cows sold steady to 4.00 higher.

FEEDER STEERS:

Medium and Large 1

300-400 lbs.	505.00-597.50
400-500 lbs.	440.00-570.00
500-600 lbs.	415.00-495.00
600-700 lbs.	373.00-435.00
700-800 lbs.	352.00-386.50
800-900 lbs.	335.00-359.00
900-950 lbs.	329.00-349.00
1000-1100 lbs.	306.25-311.25

FEEDER HEIFERS:

Medium and Large 1

300-400 lbs.	444.00-595.00
400-500 lbs.	417.50-490.00
500-600 lbs.	360.00-464.00
600-700 lbs.	343.00-390.00
700-800 lbs.	322.50-357.00

SLAUGHTER BULLS: Yield

Grade 1-2 1185-2200 lbs. 174.00-209.00; high dressing 199.00-213.00; low dressing 159.00-172.00

SLAUGHTER COWS: Breaking

and Boning (70-85% lean) 138.00-168.00, high dressing 155.00-178.00, low dressing 130.00-151.00 Lean (85-90%) 115.00-151.00, low dressing 95.00-121.00

BRED COWS: Medium and Large

1 2-4 yrs. 2nd stage 1150-1160 lbs. 3600.00-4000.00

BRED HEIFERS: Medium and

Large 1, under 2 yrs., 2nd stage, 1135-1213 lbs. 4125.00-4325.00

NORTHEAST MISSOURI WEEKLY SUMMARY

(Bowling Green, Kingdom City, Palmyra)

Receipts: 4,962 Week ago: 6,274 Year ago: 4,451

Compared to last week, feeders sold steady to 6.00 higher, with four loads of 850-900 lbs steers 15.00-20.00 higher. Slaughter cows sold steady to firm.

FEEDER STEERS:

Medium and Large 1

350-400 lbs.	502.50-527.50
400-500 lbs.	465.00-527.50
500-600 lbs.	395.00-468.00
600-700 lbs.	360.00-418.00
700-800 lbs.	352.50-385.00
800-900 lbs.	344.00-368.00

FEEDER HEIFERS:

Medium and Large 1

300-400 lbs.	440.00-510.00
400-500 lbs.	415.00-472.50
500-600 lbs.	365.00-413.00
600-700 lbs.	335.00-382.00
700-750 lbs.	322.50-363.00
800-850 lbs.	306.00-319.00

SLAUGHTER BULLS: Yield

Grade 1-2 1350-2135 lbs. 185.00-198.00; high dressing 202.00-217.00; low dressing 166.00-181.00

SLAUGHTER COWS: Breaking

and Boning, (70-85% lean) 146.00-164.00; high dressing 160.00-181.00 Lean (85-90%) 138.00-153.00; low dressing 121.00-140.00

SLAUGHTER STEERS: Choice

2-3 220.00-222.25

SLAUGHTER HEIFERS: Choice

2-3 218.50-221.75

BRED COWS: Medium and

Large 1 2/8 yrs 1100-1500 lbs 2n and 3rd stage 3300.00-3850.00

BRED HEIFERS: Medium and

Large 1 1 1/2-2 yrs 1075-1200 lbs 3rd stage 4100.00-4500.00

NORTH CENTRAL MISSOURI WEEKLY SUMMARY

(Macon, Unionville, Green City, New Cambria)

Receipts: 5,551 2 Weeks ago: 986 Year ago: 4,348

Compared to two weeks ago, feeders sold steady to 20.00 higher spots 30.00 higher. Slaughter cows sold steady to 7.00 higher.

FEEDER STEERS:

Medium and Large 1

300-400 lbs.	540.00-605.00
400-500 lbs.	472.50-590.00
500-600 lbs.	415.00-495.00
600-700 lbs.	375.00-439.50
700-800 lbs.	369.00-399.50
800-850 lbs.	349.50-355.50

FEEDER HEIFERS:

Medium and Large 1

300-400 lbs.	430.00-450.00
400-500 lbs.	391.00-485.00
500-600 lbs.	369.00-435.00
600-700 lbs.	350.00-405.00
700-800 lbs.	315.00-360.00
800-900 lbs.	325.00-344.50

SLAUGHTER BULLS: Yield

Grade 1-2 1410-2215 lbs. 175.00-191.00

SLAUGHTER COWS: Breaking

and Boning (70-85% lean) 141.00-168.00; high dressing 169.00-173.00; low dressing 138.50-149.00; Lean (85-90 %) 131.00-149.00

BRED COWS: Medium and

Large 1, 2-8 yrs., 2nd stage, 3350.00-3900.00, 3rd stage 3500.00-4000.00 5-8 yrs. 3rd stage 3200.00-3450.00

BRED HEIFERS: Medium and

Large 1, under 2 yrs. 3rd stage 1137-1244 lbs. 4300.00-4500.00

SOUTHEAST MISSOURI WEEKLY SUMMARY

(Jackson and Farmington)

Receipts: 1,123 Week ago: 1,399 Year ago: 1,557

Compared to last week, feeders sold steady to 35.00 higher.
Slaughter cows and bulls sold steady to 2.00 higher.

FEEDER STEERS:

Medium and Large 1

300-400 lbs. 412.00-510.00
400-500 lbs. 400.00-479.00
500-600 lbs. 377.00-425.00
600-650 lbs. 350.00-410.00
700-800 lbs. 312.00-340.00
800-900 lbs. 330.00-342.00

FEEDER HEIFERS:

Medium and Large 1

300-400 lbs. 405.00-480.00
400-500 lbs. 360.00-460.00
500-600 lbs. 345.00-445.00
600-700 lbs. 315.00-365.00
700-800 lbs. 290.00-336.00

SLAUGHTER BULLS: Yield
Grade 1-2 1255-2250 lbs. 151.00-
198.00, high dressing 176.00-
212.00, low dressing 125.00-
150.00

SLAUGHTER COWS: Breaking
and Boning (75-85% lean) 135.00-
153.00; high dressing 152.00-
182.00; Lean (85-90% lean) 90.00-
126.00; high dressing 128.00-
157.00

BRED COWS: Medium and Large
2 1070-1415 lbs 2-8 yrs 2nd-3rd
stage 2000.00-2500.00 per head

COW & CALF PAIRS: Scarce

EAST CENTRAL MISSOURI WEEKLY SUMMARY

(Cuba, Vienna)

Receipts: 1,261 Week Ago: 3,745 Year ago: 1,738

Compared to last week, feeders sold 5.00-15.00 higher, except a
few heifers under 400 lbs. 10.00-15.00 lower. Slaughter cows
sold steady.

FEEDER STEERS:

Medium and Large 1

300-400 lbs. 505.00-515.00
400-500 lbs. 435.00-522.50
500-600 lbs. 395.00-456.00
600-700 lbs. 365.00-415.00
800-850 lbs. 316.00

FEEDER HEIFERS:

Medium and Large 1

300-400 lbs. 430.00-460.00
400-500 lbs. 400.00-445.00
500-600 lbs. 369.00-415.00
600-650 lbs. 357.50-360.00
750-800 lbs. 295.00-302.00
900-1000 lbs. 241.00-286.50

SLAUGHTER BULLS: Yield
Grade 1-2 1500-2060 lbs 180.00-
191.00; low dressing 151.00-
178.00

SLAUGHTER COWS: Breaking
and Boning, (70-85% lean) 150.00-
162.50, high dressing 162.00-
169.00, low dressing 145.00-
152.00; Lean (85-90%) 131.00-
149.00, low dressing 116.00-
132.00

BRED COWS: Medium and
Large 1, 1170-1565 lbs., 2-8 yrs.,
2nd-3rd stage, 2900.00-3525.00

BRED HEIFERS: Medium and
Large 1-2, 860-1106 lbs., Under 2
yrs., 2nd-3rd stage, 3500.00-
4250.00

NORTHWEST MISSOURI WEEKLY SUMMARY

(Tina)

Receipts: 2420 Last week: 2,101 Year ago: 2014

Compared to last week, feeder steers traded mostly 15.00-30.00
higher. The heifers traded steady to 25.00 higher on the well
tested weights. Slaughter cows traded steady with no good compar-
ison on slaughter bulls.

FEEDER STEERS:

Medium and Large 1

400-500 lbs. 463.00-510.00
500-600 lbs. 445.00-488.00
600-700 lbs. 374.00-418.00
700-800 lbs. 350.00-376.00
800-900 lbs. 354.00-363.00

FEEDER HEIFERS:

Medium and Large 1

400-500 lbs. 435.00-480.00
500-600 lbs. 382.00-437.00
600-700 lbs. 346.00-379.50
700-800 lbs. 331.00-332.00
800-850 lbs. 316.00

SLAUGHTER BULLS: Yield
Grade 1-2 1535-1790 lbs. 181.50-
192.50; low dressing 168.00-
178.00

SLAUGHTER COWS: Breaking
and Boning, (70-85% lean) 148.00-
168.00, high dressing 158.00-
165.00; Lean (85-90%) 134.00-
143.00, low dressing 122.00-125.00

BRED COWS: Medium and
Large 1 2-8 yrs 1200-1600 lbs
2nd and 3rd stage 3000.00-
4700.00 per head.

BRED HEIFERS: Medium and
Large 1 1 1/2-2 yrs 950-1150 lbs
2nd and 3rd stage 3500.00-4500.00
per head

AFTERNOON NATIONAL SLAUGHTER CATTLE REVIEW

So far for Friday, negotiated cash trade has been light on moder-
ate demand in the Western Cornbelt. Compared to Thursday,
live purchases have been steady at 228.00. The last established
dressed market in the Western Cornbelt was Thursday from
356.00-358.00. Negotiated cash trade has been limited on moder-
ate demand in Nebraska. There have been a few live purchases
at 228.00, but not enough for an adequate market test. The last
established market test in Nebraska was Thursday with live pur-
chases at 228.00 and dressed purchases from 356.00-358.00.
Negotiated cash trade has been mostly inactive on moderate de-
mand in Kansas. The last established market in Kansas was last
week at 230.00.

Negotiated Cash Sales:

Confirmed:	3,243	Week Ago:	1,522	Year Ago:	4,466
Week to date:	31,537	Week Ago:	99,670	Year Ago:	46,858

<u>Live Basis</u>	<u>Steers</u>	<u>Heifers</u>
Over 80% Choice	228.00-228.00 avg 228.00	228.00-228.00 avg 228.00
65-80% Choice	-	-
35-65% Choice	-	-
0-35% Choice	-	-
Total All Grades	228.00-228.00 avg 228.00	228.00-228.00 avg 228.00
<u>Dressed Basis</u>		
Over 80% Choice	355.00-358.00 avg 356.19	-
65-80% Choice	-	-
35-65% Choice	-	-
0-35% Choice	-	-
Total All Grades	355.00-358.00 avg 356.19	-

<u>All Beef Type Steers/Heifers</u>	<u>Head</u>	<u>Avg Wt</u>	<u>Price Range</u>	<u>Wtd Avg</u>
Live FOB	2,412	1,478.5	222.00-230.00	227.98
Live Del	101	1,460.4	228.00-230.00	229.05
Dressed Del	620	984.4	355.00-358.00	355.98
Dressed FOB	110	950.1	354.00-355.00	354.36

WEEKLY COMMODITY FUTURES TRENDS

Compared to last week, Live Cattle 0.60 to 1.25 higher, Lean Hogs
nearby 0.02 to 0.40 lower, distance 0.02 to 0.65 higher, Feeder Cattle
3.27 to 6.50 higher.

Daily Futures Closes

	Mon.	Tues.	Wed.	Thu.	Fri.
Cattle					
Dec	230.82	231.15	230.30	228.42	230.40
Feb	230.55	230.70	229.55	228.40	230.80
Apr	230.02	230.27	229.12	228.15	230.00
Jun	223.42	223.70	222.75	222.10	223.82
Aug	219.45	219.80	218.90	218.42	220.15
Lean Hogs					
Feb	83.85	84.77	83.00	84.12	84.50
Apr	88.92	89.70	87.95	88.95	89.12
May	92.50	93.37	91.92	92.87	92.92
Jun	101.05	101.77	100.67	101.60	101.70
Jul	102.00	102.55	101.67	102.52	102.60
Fdr Cattle					
Jan	339.92	343.32	341.52	340.27	345.60
Mar	334.85	337.60	336.32	334.60	339.40
Apr	333.77	336.30	335.02	333.17	337.60
May	331.77	334.07	332.72	330.80	334.87
Aug	331.97	334.15	332.85	330.60	334.72
Milk					
Dec	15.81	15.84	15.83	15.79	15.77
Jan	15.76	15.85	15.89	15.61	15.61
Feb	15.66	15.65	15.63	15.34	15.38

WEEKLY COMMODITY GRAIN FUTURES TRENDS

Compared to last week, Soybeans 0.22 to 0.28 lower, Wheat 0.13 to 0.19 lower, Corn 0.01 to 0.03 higher, KC Wheat 0.03 lower, Soybean Meal 4.50-5.00 higher.

Daily Grain Futures Closes

	Mon.	Tues.	Wed.	Thu.	Fri.
Soybeans					
Jan	1071 3/4	1062 1/4	1058 1/4	1052 1/4	1049 1/4
Mar	1081 1/4	1071 3/4	1068 3/4	1062	1059 1/2
May	1093	1083	1080	1073 1/4	1070 1/2
Jul	1104 1/4	1094 1/4	1091 1/4	1085	1082
Aug	1100	1090 1/4	1087 1/4	1082	1079
Wheat					
Mar	520 3/4	509 1/2	506 1/4	507 3/4	509 3/4
May	529	519 1/2	517 1/4	518 3/4	520 1/2
Jul	538 1/4	529 3/4	527 3/4	529 3/4	531 3/4
Sep	550 3/4	542 3/4	541 1/4	543 3/4	545
Dec	567 3/4	560	559 1/2	562	563
Corn					
Mar	439 3/4	436 1/2	440 1/2	444 1/2	443 3/4
May	447 3/4	444 1/2	447 3/4	452 1/4	451 1/2
Jul	453 3/4	451	453 1/2	458	457 1/2
Sep	448 3/4	447 1/2	448 3/4	451 1/4	451
Dec	461	459 1/2	460 1/2	462 1/4	462
KC Wheat					
Mar	512	505	507 3/4	517	515 1/4
May	524 1/4	517 1/2	520 1/4	529 1/4	527 3/4
Jul	537 1/2	531 1/4	533 1/2	541 3/4	541
Sep	552 3/4	546 3/4	549	556 3/4	556
Dec	572	566 1/4	568 1/2	576 1/4	575
SB Meal					
Jan	303.50	302.40	298.20	298.40	297.60
Mar	306.60	306.10	302.00	302.30	301.10
May	310.60	310.30	305.70	306.20	304.70
Jul	315.60	315.60	310.60	311.10	309.70
Aug	316.90	316.90	312.00	312.50	311.20

MISSOURI GRAIN WEEKLY TRENDS

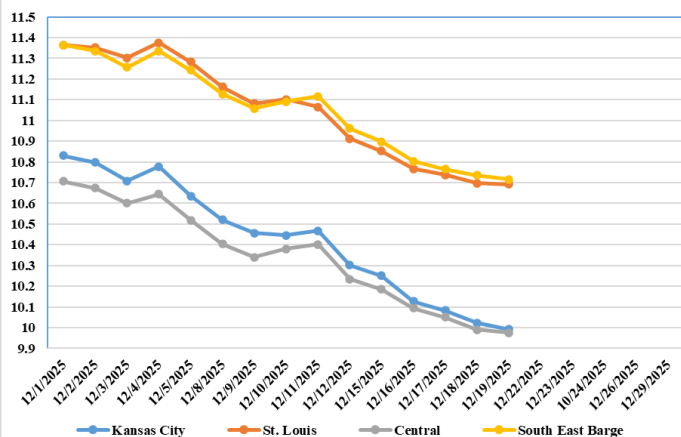
Compared to last week, Soybeans 0.20 to 0.37 lower, Wheat 0.20 to 0.32 lower, Corn 0.01 lower to 0.06 higher, Sorghum 0.03 higher.

Area	#1 Soybeans	#2 Soft Wheat	#2 Corn	#2 Grain Sorghum
Kansas City				
Friday**	10.16-10.56	4.92	4.40	3.55
Monday	10.11-10.51	4.83	4.32	3.54
Tuesday	10.02-10.32	4.72	4.29	3.51
Wednesday	9.98-10.28	4.69	4.33	3.55
Thursday	9.92-10.22	4.70	4.37	3.59
Friday	9.89-10.19	4.72	4.46	3.58
St. Louis				
Friday**	10.87-10.94	5.19-5.41	4.52-4.55	4.25
Monday	10.84-10.85	5.10-5.32	4.50-4.52	4.24
Tuesday	10.75-10.77	4.99-5.21	4.42-4.48	4.21
Wednesday	10.71-10.76	4.96-5.11	4.46-4.47	4.25
Thursday	10.67-10.72	4.97-5.12	4.53-4.55	4.29
Friday	10.67-10.71	4.99-5.09	4.54	4.28
Central				
Friday**	10.16-10.26	4.79	4.05-4.10	—
Monday	10.11-10.21	4.70	4.04-4.09	—
Tuesday	10.02-10.12	4.59	4.01-4.06	—
Wednesday	9.98-10.08	4.56	4.05-4.10	—
Thursday	9.92-10.02	4.57	4.09-4.14	—
Friday	9.89-10.04	4.59	4.08-4.13	—
S.E. MO				
Friday**	10.88-11.01	5.07	4.49-4.60	—
Monday	10.80-10.94	4.98	4.45-4.57	—
Tuesday	10.75-10.85	4.87	4.42-4.51	—
Wednesday	10.74-10.81	4.84	4.44-4.55	—
Thursday	10.69-10.75	4.85	4.50-4.59	—
Friday	10.69-10.74	4.87	4.50-4.58	—

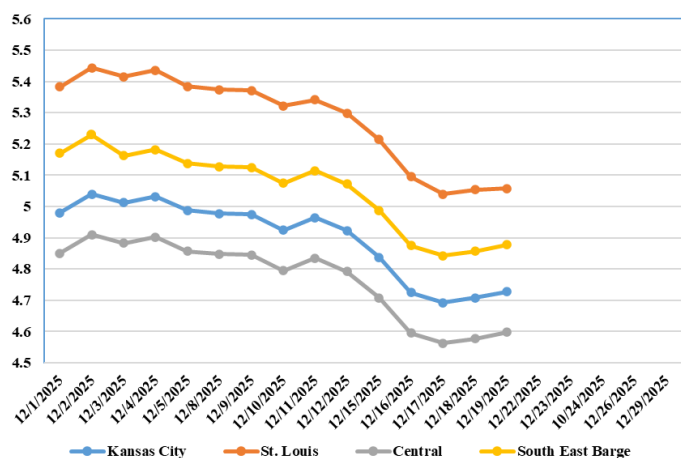
(PRICES PER BUSHEL) *NEW CROP **PREVIOUS WEEK'S PRICES
*Bids calculated using Kansas City, St. Louis, and St. Joseph bids

MONTHLY GRAIN CROP

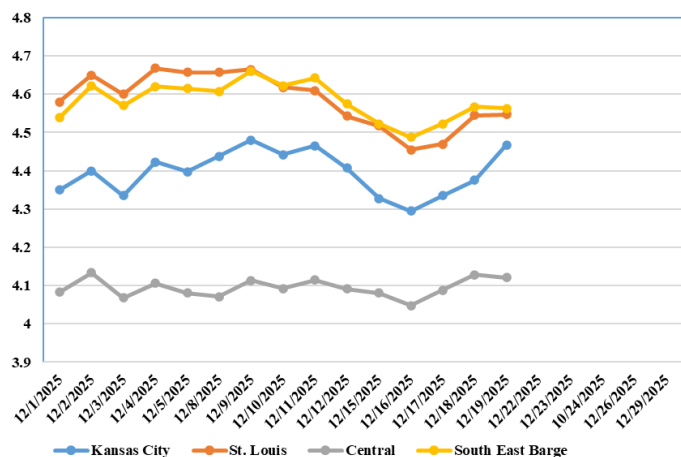
December 2025 Soybean Bids



December 2025 Wheat Bids



December 2025 Corn Bids



*Axis value ranges may be updated to reflect data points.
Only dates in which markets are trading and only current cash bids are represented.

WHOLESALE FEEDSTUFFS PRICES (DOLLARS PER TON-BULK BASIS)

Area	Cottonseed Meal 41%	Soybean Meal 46.5-48%	Corn Gluten Pellets 21%	Wheat Middlings
Kansas City	306.67	297.30	220.00	326.67
St. Louis	301.67	N/A	202.00	262.50

CATTLE ON FEED

United States Cattle on Feed Down 2 Percent

Cattle and calves on feed for the slaughter market in the United States for feedlots with capacity of 1,000 or more head totaled 11.7 million head on December 1, 2025. The inventory was 2 percent below December 1, 2024.

Placements in feedlots during November totaled 1.60 million head, 11 percent below 2024. Net placements were 1.54 million head. Placements were the lowest for November since the series began in 1996. During November, placements of cattle and calves weighing less than 600 pounds were 435,000 head, 600-699 pounds were 375,000 head, 700-799 pounds were 320,000 head, 800-899 pounds were 255,000 head, 900-999 pounds were 130,000 head, and 1,000 pounds and greater were 80,000 head.

Marketings of fed cattle during November totaled 1.52 million head, 12 percent below 2024. Marketings were the second lowest for November since the series began in 1996.

Other disappearance totaled 53,000 head during November, 4 percent below 2024

MISSOURI WEEKLY SHEEP/GOAT AUCTION SUMMARY

Receipts: 1825 Week Ago: 832 Last Year: 1,132

SHEEP: Feeder Lambs: Small and Medium 1-2 hair pkg 25 lbs 440.00; 30-40 lbs 380.00-410.00; 40-50 lbs 362.50-432.50; 50-55 lbs 390.00-400.00. Slaughter Lambs: Choice and Prime 1-2 40-50 lbs 335.00-337.00; 50-60 lbs 300.00-372.00; 60-70 lbs 300.00-385.00; 70-80 lbs 325.00-357.00. Choice and Prime 1-3 50-60 lbs 380.00-392.50; 60-70 lbs 357.50-382.50; 70-80 lbs 315.00-345.00; 80-90 lbs 265.00-290.00. Ewes: Utility and Good 2 80-100 lbs 140.00-160.00; 100-140 lbs 125.00-155.00. Hair Ewes Good 2-3 110-140 lbs 130.00-147.50. Hair Utility and Good 103 85-145 lbs 125.00-142.50. Replacement Ewes Small and Medium 1-2 Hair 1-2 yr 95-130 lbs exp 150.00-220.00; 2-4 yrs 110-135 lbs exp 155.00-170.00.

GOATS: Feeder Kids: Selection 1 35-50 lbs 347.50-415.00. Selection 1-2 30-45 lbs 300.00-365.00. Selection 2 30-50 lbs 250.00-350.00. Slaughter Kids Selection 1 50-60 lbs 365.00-430.00; 60-70 lbs 350.00-405.00; 70-80 lbs 320.00-355.00. Selection 2 50-60 lbs 345.00-365.00; 60-70 lbs 305.00-350.00; 70-80 lbs 300.00-305.00. Slaughter Nannies Selection 1-2 60-70 lbs 142.50-175.00; 70-80 lbs 145.00-165.00; 80-90 lbs 140.00-170.00; 90-100 lbs 145.00-177.50; 100-150 lbs 137.50-180.00. Replacement Nannies Selection 1-2 2-4 yrs 100-125 lbs exp 195.00-230.00. 4-6 yrs 100-125 lbs exp 180.00-210.00.

Explanatory Notes: Stage - Represents estimated lambing/kidding period (Open, Exp=exposed, Bred, Fall = Sep-Nov, Win = Dec-Feb, Spr = Mar-May, Sum=Jun-Aug; w/s = woolled and shorn; /hd= per head; /fam=per family
All price CWT unless otherwise noted.

MISSOURI DROUGHT MONITOR

Date	None	D0	D1	D2	D3	D4
12/16/25	15.29	52.41	26.99	5.31	0.0	0.0
12/09/25	20.17	49.34	25.92	4.58	0.0	0.0
12/17/24	61.16	25.28	13.56	0.0	0.0	0.0

Reflects percentage of Missouri impacted by drought. D0 Abnormally Dry; D1 Moderate Drought; D2 Severe Drought; D3 Extreme Drought; D4 Exceptional Drought

NATIONAL DIRECT DELIVERED FEEDER PIG REPORT

12/19/25 Receipts: 84,963 Week ago: 97,696 Year Ago: 79,688
Early weaned pigs are 1.00 higher and feeder pigs are 1.00- 2.00 higher.

Cash: 34,004 head 54.00-76.00, weighted average 70.18

Formula: 41,059 head 50.13-76.41, weighted average 67.56

Feeder pigs 40 pounds basis: Cash 9,900 head 84.00-88.00, weighted average 86.96

NATIONAL DAILY DIRECT PRIOR DAY HOG REPORTS 12/19/25

BARROWS AND GILTS (Carcass Basis): 1,200 head
Base Carcass Price 65.00-71.00, weighted average 68.14

SOWS (Live Basis): 6,529 head
300-500 lbs. 30.00-74.00
Over 500 lbs. 37.00-74.00

MISSOURI WEEKLY DIRECT SLAUGHTER CATTLE REPORT 12/19/25

Weekly Receipts: 240 Week ago: 160 Year ago: 340
Trading as of Friday morning, early week trade of Flat dressed sales at mostly 355.00, 5.00 higher than last week and one load at 358.00. With Grid dressed sales inactive.

<u>LIVE STEERS & HEIFERS:</u> No sales reported.	<u>DRESSED STEERS & HEIFERS:</u> 5 loads Wed. at 355.00 Flat. 1 load Thurs. at 358.00.
---	--

GRADE AND EIGHT (Grid): No Sales reported.

Click here for the current [National Crop Progress](#)

Click here for the current [Missouri Crop Progress](#)

The current hay directory can be found at: [Hay Directory](#).

MISSOURI WEEKLY HAY SUMMARY 12/18/2025

Feeding season is underway for most everyone at this point. Even with some snow not enough winter moisture to move the drought monitor in the correct direction. Currently 85 percent of the state is still highlighted in some stage of drought. Hay prices are doing what they typically do in a year where there is a surplus. Mid to lower quality hay is harder to move and prices are weak to lower, higher quality suitable for dairy or horse interest is harder to find and prices are steady. A big warm up forecast for Christmas week will be the gift for livestock producers this year as there shouldn't be any ice to chop or worries of gelled up tractors making one late for Christmas Dinner. The Missouri Department of Agriculture has a hay directory at <https://apps.mda.mo.gov/haydirectory> or visit the University of Missouri Extension feed stuff finder at <https://feedstufffinder.org>

Alfalfa - Supreme 250.00-300.00, small square 10.00-15.00 per bale
Alfalfa - Premium 175.00-225.00
Alfalfa - Good 150.00-175.00, small square 6.00-10.00 per bale
Alfalfa - Fair 125.00-150.00
Mixed Grass—Premium 150.00-200.00
Mixed grass - Good/Premium 100.00-150.00
Mixed grass-Fair/Good 75.00-125.00, small square 3.00-7.00 per bale
Mixed grass - Fair 20.00-45.00 per large round bale
Wheat straw - 4.00-7.00 per small square bale

Please Note: The above volumes (tonnage, acres, and bales) listed are for confirmed trades only, it does not include estimated volume (tonnage) for bids or offers to the trade. List your hay for sale at: [Hay Listing Online Form](#). Explanation of Hay Quality Guidelines: [Hay Quality Designation Guidelines](#). Glossary of Terms: [Livestock, Poultry, & Grain Hay Terms](#)