

Weekly Market Summary

Published by:
Missouri Department of Agriculture
Ag Business Development Division
Market News Program



Chris Chinn, Director
Jill Wood, Division Director
Tony Hancock, Editor
[agmarketnews.mo.gov](http://www.ams.usda.gov/marketnews.htm)
<http://www.ams.usda.gov/marketnews.htm>

Michael Kehoe, Governor

Volume XLV, Number 52 ♦ P.O. Box 630, Jefferson City, MO 65102 ♦ (573) 751-4211 ♦ Mon, Dec 29, 2025

MISSOURI WEEKLY FEEDER CATTLE WEIGHTED AVERAGE REPORT w/e 12/27/25

Feeder Cattle Receipts: 34,143 Week ago: 43,387 Year ago: 25,278
Steers and Heifers Medium and Large 1—Weighted average weights and prices

STEERS: Medium and Large 1

328 lbs.	539.37	524 lbs.	455.21	725 lbs.	367.49	924 lbs.	322.04
372 lbs.	539.32	572 lbs.	431.11	776 lbs.	355.10		
423 lbs.	506.65	621 lbs.	406.81	824 lbs.	347.65		
472 lbs.	488.64	669 lbs.	387.38	878 lbs.	332.06		

HEIFERS: Medium and Large 1

326 lbs.	492.28	524 lbs.	400.46	724 lbs.	345.65	915 lbs.	301.36
374 lbs.	463.07	572 lbs.	379.91	763 lbs.	323.96		
422 lbs.	452.03	623 lbs.	370.09	825 lbs.	314.75		
470 lbs.	429.83	672 lbs.	358.53	875 lbs.	302.31		

MISSOURI STEER (HEIFER) STOCKER FORMULA 12/29/2025

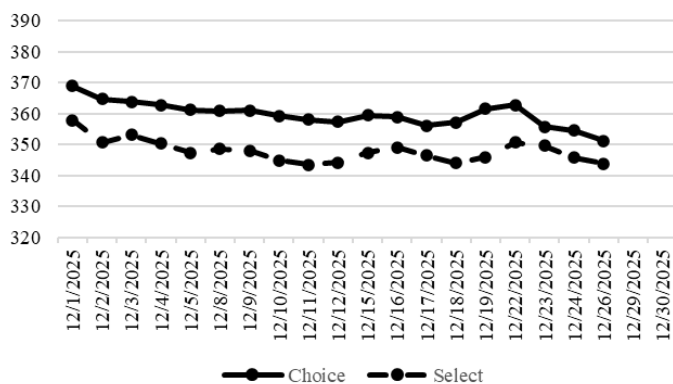
Monday's Missouri Stocker formula consists of **227 (182)** head with a weighted average weight of **561.07 (514.38)** lbs. and a price value of **442.85 (409.50)**, 8.26 higher (21.64 higher) than a week ago.***data limited due to lack of sales during the holidays***

This a rolling seven day calculated weighted value which combines all Feeder Steers reported by MDA/USDA Market News Service weighing from 400-649 lbs. in the Medium and Large 1 and Medium and Large 1-2 frame and muscle classifications, including all com-

NATIONAL BOXED BEEF CUTOUT VALUES

DATE	CHOICE	SELECT	TOTAL LOADS
12/19	361.63	346.02	98
12/22	362.87	350.69	68
12/23	355.77	349.59	138
12/24	354.62	345.75	118
12/26	351.21	343.80	70
5 Day Simple Average	357.22	347.12	

Boxed Beef Cuts December 2025



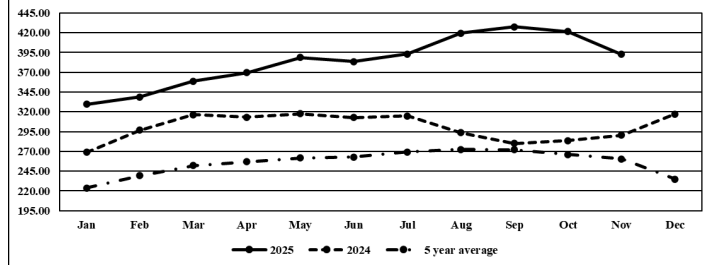
*Axis value ranges may be updated to reflect data points.

WEEKLY LIVESTOCK SLAUGHTER

	CATTLE	HOGS	SHEEP
Week to Date:	429,000	1,978,000	36,000
Last Week:	587,000	2,686,000	40,000
Last Year:	433,042	2,063,628	35,417

The Weekly Market Summary, as well as historical summaries, are available on our website <https://agmarketnews.mo.gov/summaries>
Market News Hotline: 1-573-522-9244
Check out the latest updates on our YouTube Channel: [MDA Market News](#)

Missouri Stocker Formula - Steers



*Graph is updated the first Monday of each month. Axis value ranges may be updated to reflect data points.

MISSOURI WEEKLY CATTLE AUCTION SUMMARY

Total Receipts: 42,035 Week Ago: 54,320 Year Ago: 30,278
Week Ending 12/27/25

Compared to last week, feeders sold Steady to 10.00 higher with instances of 20.00 higher mostly calves under 600 lbs. The last full business week of the year didn't disappoint as cash feeders continue to push to higher levels. Lighter weight calves are getting back very close all-time record highs once again. Although yearlings have gained back some ground from the records seen in Oct., they still have several dollars to go before getting back to record levels. Time of year likely the biggest reason as lighter weight grazing types that can head to wheat and add some quick gains are just more in demand currently. The monthly Cattle on Feed Report was released on Friday. The report should be viewed as neutral compared to pre-report expectations as all numbers were within the ranges of estimates, overall, however it continues to paint a bullish picture of light supplies. On Feed numbers were reported at 97.8 percent, Marketings at 88.1 percent and Placements at 88.8 percent of year ago levels. Stick out sales this week included: 21 head of 454 lb. steers at Windsor Livestock Auction that sold for 545.00. Kingsville Livestock Auction sold 34 head of 546 lb. steers for 477.50 and 69 head of 650 lbs. steers for 407.00. Tina Livestock Market sold 26 head of 566 lbs. steers for 472.00. New Cambria Livestock Auction sold 21 head of 617 lb. steers for 431.00. Lolli Brother Livestock Market sold 41 head of 740 lb. steers for 398.50. Joplin Regional Stockyards sold 97 head of 765 lbs. steers for 375.00 and 218 head of 932 lb. steers for 324.00. Callaway Livestock Center sold 133 head of 802 lb. steers for 368.00 and 60 head of 864 lb. steers for 351.75. On the heifer side of the market 24 head of 520 lb. heifers at Wheeler Livestock Auction sold for 464.00. Lolli Brothers Livestock Auction sold 234 head of 706 lb. heifers for 360.10. Boxed beef cutout values closed higher for the week. Choice closed on Friday at 361.63, up 4.19 and select closed at 346.02, up 1.80 compared to last week. Negotiated feedlot sales as of the 2:00 cutoff time on Friday afternoons report came in just under 32K head. Volume was very light ahead of the short holiday weeks ahead and following last week's very large volume. Nearly all the trade this week was in the north live prices were about a buck lower at 228.00. Dressed prices were stronger from 355.00-358.00. The Missouri Stocker formula consists of 7091 head with a weighted average weight of 541.43 lbs. and a price value of 434.89, 8.79 higher than last week. The steer/heifer spread is 47.03.

SOUTHWEST MISSOURI WEEKLY SUMMARY

(Joplin, Springfield, Exeter) w/e 12/27/25

Receipts: 16,724 Week ago: 23,771 Year Ago: 9,137

Compared to last week, feeders sold 5.00-15.00 higher, spots 25.00 higher. A few very light weights early week sold mixed compared to last weeks sharp upturn. Slaughter cows sold 2.00 lower to 3.00 higher.

FEEDER STEERS:

Medium and Large 1

200-300 lbs.	600.00-640.00
300-400 lbs.	500.00-601.00
400-500 lbs.	450.00-537.00
500-600 lbs.	395.00-477.50
600-700 lbs.	360.00-425.00
700-800 lbs.	340.00-375.00
800-900 lbs.	321.00-357.00
900-950 lbs.	315.00-325.00

FEEDER HOLSTEIN STEERS

Large 3

Scarce

FEEDER HEIFERS:

Medium and Large 1

200-300 lbs.	495.00-550.00
300-400 lbs.	420.00-540.00
400-500 lbs.	390.00-500.00
500-600 lbs.	355.00-420.00
600-700 lbs.	337.00-379.00
700-800 lbs.	316.00-350.00
800-900 lbs.	297.00-316.00
900-950 lbs.	297.00-303.00

SLAUGHTER COWS: Breaking and Boning (70-85% lean) 135.00-164.00; high dressing 154.00-179.00; low dressing 125.00-149.00 Lean (85-90%) 122.50-147.00; high dressing 137.50-155.00; low dressing 80.00-127.00

SLAUGHTER BULLS: Yield

Grade 1-2 1250-2405 lbs. 170.00-207.00; high dressing 190.00-223.00; low dressing 142.00-181.00.

BRED COWS: Medium and Large 1, 1095-1670 lbs., 2nd -3rd stage, 2-8 yrs. 2800.00-4300.00; over 8 yrs. 3000.00-3100.00 per head

BRED HEIFERS: Medium and Large 1 1 1/2-4 yrs 919-1280 lbs 2nd and 3rd stage 3900.00-4600.00 per head

COW CALF PAIRS: Medium and Large 1 with baby to 300 lb. calves, 2-8 yrs., Open, 4500.00-5150.00 per pair;

Medium and Large 1-2 with baby to 300 lb. calves, 2-8 yrs. Open 3300.00-4300.00 per pair

SOUTH CENTRAL MISSOURI WEEKLY SUMMARY

(West Plains, Phillipsburg) w/e 12/27/25

Receipts: 4,328 Week ago: 7,096 Year Ago: 3,222

Compared to last week, feeders sold steady to 12.00 higher, with some spots of 20.00-40.00 higher. Slaughter cows sold steady to 7.00 higher.

FEEDER STEERS:

Medium and Large 1

300-400 lbs.	520.00-585.00
400-500 lbs.	472.50-540.00
500-600 lbs.	402.50-477.00
600-700 lbs.	375.00-407.50
700-800 lbs.	347.50-367.50
800-900 lbs.	323.50-343.00

FEEDER HOLSTEIN STEERS:

Large 3

400-450 lbs. 265.00

FEEDER HEIFERS:

Medium and Large 1

300-400 lbs.	440.00-515.00
400-500 lbs.	412.50-457.50
500-600 lbs.	365.00-415.00
600-700 lbs.	332.50-398.00
700-800 lbs.	319.00-335.00

SLAUGHTER COWS: Breaking and Boning (70-85% lean) 145.50-165.50; high dressing 163.00-177.00; low dressing 131.00-149.00 Lean (85-90%) 125.00-144.00, high dressing 145.00-161.00 low dressing 104.00-125.00

SLAUGHTER BULLS: Yield

Grade 1-2 1195-2005 lbs. 170.00-189.00; high dressing 190.00-198.00; low dressing 152.50-165.00

BRED COWS: Medium and Large 1-2 965-1400 lbs. 2-8 yrs. 1st stage, 2500.00-2600.00; 2nd-3rd stage 1975.00-3650.00; Over 8 years, 2nd-3rd stage 2250.00-2850.00

COW CALF PAIRS: Scarce**WEST CENTRAL MISSOURI WEEKLY SUMMARY**

(Kingsville, Windsor, Butler, Osceola) w/e 12/27/25

Receipts: 5,666 Week ago: 8,948 Year ago: 3,811

Compared to last week, feeders sold steady to 15.00 higher, spots 20.00 higher. Slaughter cows sold steady to 4.00 higher.

FEEDER STEERS:

Medium and Large 1

300-400 lbs.	505.00-597.50
400-500 lbs.	440.00-570.00
500-600 lbs.	415.00-495.00
600-700 lbs.	373.00-435.00
700-800 lbs.	352.00-386.50
800-900 lbs.	335.00-359.00
900-950 lbs.	329.00-349.00
1000-1100 lbs.	306.25-311.25

SLAUGHTER BULLS: Yield Grade 1-2 1185-2200 lbs. 174.00-209.00; high dressing 199.00-213.00; low dressing 159.00-172.00

BRED COWS: Medium and Large 1 2-4 yrs. 2nd stage 1150-1160 lbs. 3600.00-4000.00

FEEDER HEIFERS:

Medium and Large 1

300-400 lbs.	444.00-595.00
400-500 lbs.	417.50-490.00
500-600 lbs.	360.00-464.00
600-700 lbs.	343.00-390.00
700-800 lbs.	322.50-357.00

SLAUGHTER COWS: Breaking and Boning (70-85% lean) 138.00-168.00, high dressing 155.00-178.00, low dressing 130.00-151.00 Lean (85-90%) 115.00-151.00, low dressing 95.00-121.00

BRED HEIFERS: Medium and Large 1, under 2 yrs., 2nd stage, 1135-1213 lbs. 4125.00-4325.00

NORTHEAST MISSOURI WEEKLY SUMMARY

(Bowling Green, Kingdom City, Palmyra) w/e 12/27/25

Receipts: 4,962 Week ago: 6,274 Year ago: 4,451

Compared to last week, feeders sold steady to 6.00 higher, with four loads of 850-900 lbs steers 15.00-20.00 higher. Slaughter cows sold steady to firm.

FEEDER STEERS:

Medium and Large 1

350-400 lbs.	502.50-527.50
400-500 lbs.	465.00-527.50
500-600 lbs.	395.00-468.00
600-700 lbs.	360.00-418.00
700-800 lbs.	352.50-385.00
800-900 lbs.	344.00-368.00

SLAUGHTER BULLS: Yield Grade 1-2 1350-2135 lbs. 185.00-198.00; high dressing 202.00-217.00; low dressing 166.00-181.00

SLAUGHTER STEERS: Choice 2-3 220.00-222.25

BRED COWS: Medium and Large 1 2/8 yrs 1100-1500 lbs 2n and 3rd stage 3300.00-3850.00

FEEDER HEIFERS:

Medium and Large 1

300-400 lbs.	440.00-510.00
400-500 lbs.	415.00-472.50
500-600 lbs.	365.00-413.00
600-700 lbs.	335.00-382.00
700-750 lbs.	322.50-363.00
800-850 lbs.	306.00-319.00

SLAUGHTER COWS: Breaking and Boning, (70-85% lean) 146.00-164.00; high dressing 160.00-181.00 Lean (85-90%) 138.00-153.00; low dressing 121.00-140.00

SLAUGHTER HEIFERS: Choice 2-3 218.50-221.75

BRED HEIFERS: Medium and Large 1 1 1/2-2 yrs 1075-1200 lbs 3rd stage 4100.00-4500.00

NORTH CENTRAL MISSOURI WEEKLY SUMMARY

(Macon, Unionville, Green City, New Cambria) w/e 12/27/25

Receipts: 5,551 2 Weeks ago: 986 Year ago: 4,348

Compared to two weeks ago, feeders sold steady to 20.00 higher spots 30.00 higher. Slaughter cows sold steady to 7.00 higher.

FEEDER STEERS:

Medium and Large 1

300-400 lbs.	540.00-605.00
400-500 lbs.	472.50-590.00
500-600 lbs.	415.00-495.00
600-700 lbs.	375.00-439.50
700-800 lbs.	369.00-399.50
800-850 lbs.	349.50-355.50

SLAUGHTER BULLS: Yield Grade 1-2 1410-2215 lbs. 175.00-191.00

BRED COWS: Medium and Large 1, 2-8 yrs., 2nd stage, 3350.00-3900.00, 3rd stage 3500.00-4000.00 5-8 yrs. 3rd stage 3200.00-3450.00

FEEDER HEIFERS:

Medium and Large 1

300-400 lbs.	430.00-450.00
400-500 lbs.	391.00-485.00
500-600 lbs.	369.00-435.00
600-700 lbs.	350.00-405.00
700-800 lbs.	315.00-360.00
800-900 lbs.	325.00-344.50

SLAUGHTER COWS: Breaking and Boning (70-85% lean) 141.00-168.00; high dressing 169.00-173.00; low dressing 138.50-149.00; Lean (85-90 %) 131.00-149.00

BRED HEIFERS: Medium and Large 1, under 2 yrs. 3rd stage 1137-1244 lbs. 4300.00-4500.00

SOUTHEAST MISSOURI WEEKLY SUMMARY

(Jackson and Farmington) w/e 12/27/25

Receipts: 1,123 Week ago: 1,399 Year ago: 1,557

Compared to last week, feeders sold steady to 35.00 higher.
Slaughter cows and bulls sold steady to 2.00 higher.

FEEDER STEERS:

Medium and Large 1

300-400 lbs. 412.00-510.00
400-500 lbs. 400.00-479.00
500-600 lbs. 377.00-425.00
600-650 lbs. 350.00-410.00
700-800 lbs. 312.00-340.00
800-900 lbs. 330.00-342.00

FEEDER HEIFERS:

Medium and Large 1

300-400 lbs. 405.00-480.00
400-500 lbs. 360.00-460.00
500-600 lbs. 345.00-445.00
600-700 lbs. 315.00-365.00
700-800 lbs. 290.00-336.00

SLAUGHTER BULLS: Yield
Grade 1-2 1255-2250 lbs. 151.00-
198.00, high dressing 176.00-
212.00, low dressing 125.00-
150.00

SLAUGHTER COWS: Breaking
and Boning (75-85% lean) 135.00-
153.00; high dressing 152.00-
182.00; Lean (85-90% lean) 90.00-
126.00; high dressing 128.00-
157.00

BRED COWS: Medium and Large
2 1070-1415 lbs 2-8 yrs 2nd-3rd
stage 2000.00-2500.00 per head

COW & CALF PAIRS: Scarce

EAST CENTRAL MISSOURI WEEKLY SUMMARY

(Cuba, Vienna) w/e 12/27/25

Receipts: 1,261 Week Ago: 3,745 Year ago: 1,738

Compared to last week, feeders sold 5.00-15.00 higher, except a
few heifers under 400 lbs. 10.00-15.00 lower. Slaughter cows
sold steady.

FEEDER STEERS:

Medium and Large 1

300-400 lbs. 505.00-515.00
400-500 lbs. 435.00-522.50
500-600 lbs. 395.00-456.00
600-700 lbs. 365.00-415.00
800-850 lbs. 316.00

FEEDER HEIFERS:

Medium and Large 1

300-400 lbs. 430.00-460.00
400-500 lbs. 400.00-445.00
500-600 lbs. 369.00-415.00
600-650 lbs. 357.50-360.00
750-800 lbs. 295.00-302.00
900-1000 lbs. 241.00-286.50

SLAUGHTER BULLS: Yield
Grade 1-2 1500-2060 lbs 180.00-
191.00; low dressing 151.00-
178.00

SLAUGHTER COWS: Breaking
and Boning, (70-85% lean) 150.00-
162.50, high dressing 162.00-
169.00, low dressing 145.00-
152.00; Lean (85-90%) 131.00-
149.00, low dressing 116.00-
132.00

BRED COWS: Medium and
Large 1, 1170-1565 lbs., 2-8 yrs.,
2nd-3rd stage, 2900.00-3525.00

BRED HEIFERS: Medium and
Large 1-2, 860-1106 lbs., Under 2
yrs., 2nd-3rd stage, 3500.00-
4250.00

NORTHWEST MISSOURI WEEKLY SUMMARY

(Tina)

Receipts: 1,200 Last week: 2,420 Year ago: 0

Compared to last week, feeders sold with steady to higher un-
dertones on a light test of most weight classes, 600-650 lb steers
sold 10.00-15.00 higher. Slaughter cows sold steady.

FEEDER STEERS:

Medium and Large 1

400-500 lbs. 495.00-510.00
600-700 lbs. 368.00-431.50
700-800 lbs. 363.00-366.00

FEEDER HEIFERS:

Medium and Large 1

300-400 lbs. 450.00-485.00
400-500 lbs. 434.00-460.00
500-600 lbs. 418.00-425.00
600-700 lbs. 363.00-377.00
700-750 lbs. 360.25-368.00

SLAUGHTER BULLS: Yield
Grade 1-2 1400-1900 lbs. 181.00-
190.00; high dressing ind. 205.00

SLAUGHTER COWS: Breaking
and Boning, (70-85% lean) 140.00-
163.00, high dressing 157.00-
168.00; Lean (85-90%) 130.00-
143.50, low dressing 119.00-129.00

BRED COWS: Scarce

BRED HEIFERS: Scarce

AFTERNOON NATIONAL SLAUGHTER CATTLE REVIEW

So far for Friday, negotiated cash trade has been mostly inactive
on moderate demand in all feeding regions. The last established
market in Kansas was Tuesday at 229.00. The last established
market in Nebraska was Wednesday with live purchases at
230.00 and dressed purchases at 356.00. The last established
market in the Western Cornbelt was Wednesday with live pur-
chases at 229.00 and last week with dressed purchases from
356.00-358.00.

Negotiated Cash Sales:

Confirmed:	1,049	Week Ago:	3,537	Year Ago:	16,241
Week to date:	36,174	Week Ago:	31,537	Year Ago:	19,361

<u>Live Basis</u>	<u>Steers</u>	<u>Heifers</u>
Over 80% Choice	228.00-228.00 avg 228.00	-
65-80% Choice	-	-
35-65% Choice	-	-
0-35% Choice	-	-
Total All Grades	228.00-228.00 avg 228.00	-
<u>Dressed Basis</u>		
Over 80% Choice	-	-
65-80% Choice	-	-
35-65% Choice	-	-
0-35% Choice	-	-
Total All Grades	-	-

<u>All Beef Type Steers/Heifers</u>	<u>Head</u>	<u>Avg Wt</u>	<u>Price Range</u>	<u>Wtd Avg</u>
Live FOB	938	1522.50	228.00-235.00	229.22
Live Del	111	1397.30	231.00-235.00	232.26
Dressed Del	-	-	-	-
Dressed FOB	-	-	-	-

WEEKLY COMMODITY FUTURES TRENDS

Compared to last week, Live Cattle nearby 0.30 to 1.85 lower, distant,
0.33 to 0.52 higher, Lean Hogs 0.02 to 0.70 higher, Feeder Cattle 0.57
to 2.63 higher.

Daily Futures Closes

	Mon.	Tues.	Wed.	Thu.	Fri.
Cattle					
Dec	230.72	228.82	228.70	Holiday	229.82
Feb	231.42	230.00	228.55		228.95
Apr	231.07	230.02	228.72		229.70
Jun	224.95	224.12	223.20		224.15
Aug	221.22	220.52	219.67		220.67
Lean Hogs					
Feb	85.35	85.97	85.05	Holiday	84.52
Apr	89.87	90.27	89.80		89.47
May	93.60	93.85	93.65		93.42
Jun	102.35	102.75	102.52		102.32
Jul	103.25	103.55	103.40		103.30
Fdr Cattle					
Jan	346.50	344.62	344.72	Holiday	346.17
Mar	340.50	339.00	338.80		340.42
Apr	339.00	337.67	337.50		339.20
May	336.57	335.35	335.20		337.05
Aug	336.82	335.75	335.42		337.35
Milk					
Dec	15.77	15.78	15.77	Holiday	15.86
Jan	15.28	15.40	15.28		15.29
Feb	15.35	15.41	15.38		15.63

WEEKLY COMMODITY GRAIN FUTURES TRENDS

Compared to last week, Soybeans 0.10 to 0.14 higher, Wheat 0.09 to 0.12 higher, Corn 0.06 to 0.07 higher, KC Wheat 0.18 to 0.19 higher, Soybean Meal 5.60 to 6.30 higher.

Daily Grain Futures Closes

	Mon.	Tues.	Wed.	Thu.	Fri.
Soybeans					
Jan	1053 1/4	1051 1/2	1063 1/4	Holiday	1058 3/4
Mar	1065	1063 3/4	1076 1/2		1072 1/2
May	1075 1/2	1074 1/4	1087 1/2		1084 1/4
Jul	1086 1/4	1085 1/4	1098 1/2		1095 1/2
Aug	1083 1/4	1082 3/4	1095 1/4		1092 1/4
Wheat					
Mar	515 1/2	517	521 3/4	Holiday	519
May	526 1/4	527 1/4	532 1/4		530 3/4
Jul	537 1/4	538 1/2	543 3/4		542 1/2
Sep	550 1/2	552	557 1/2		556 1/4
Dec	568 1/2	570	575 1/2		574 1/2
Corn					
Mar	447	447 1/2	451	Holiday	450
May	454 1/2	455 1/2	459		458 1/4
Jul	460	461	464 1/2		464 1/4
Sep	453 1/4	454 1/4	457 1/4		458 1/4
Dec	464 1/2	465	467 3/4		468 1/2
KC Wheat					
Mar	521 1/4	528	534	Holiday	533 1/2
May	534	540	546		546
Jul	547 1/4	552 3/4	558 1/2		559
Sep	562 1/4	567 3/4	573 1/2		573 3/4
Dec	581 1/4	587	592 3/4		593
SB Meal					
Jan	298.60	301.10	304.70	Holiday	303.70
Mar	301.90	304.20	308.10		307.40
May	305.70	307.60	311.30		310.70
Jul	310.40	312.10	315.70		315.50
Aug	312.00	313.40	317.00		316.80

MISSOURI GRAIN WEEKLY TRENDS

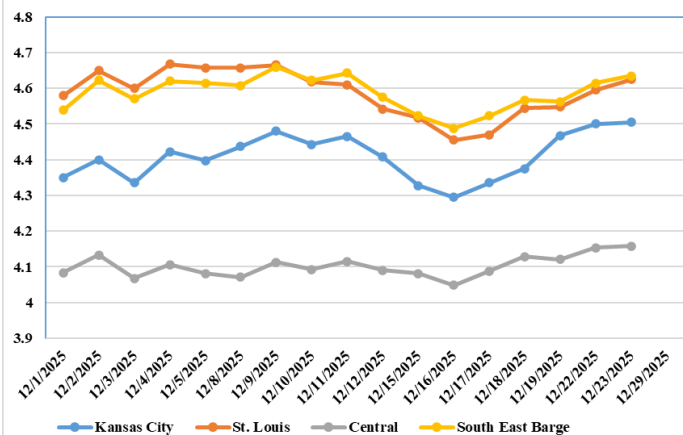
Compared to last week, Soybeans 0.08 lower to 0.10 higher, Wheat 0.08 higher, Corn 0.04 to 0.09 higher, Sorghum 0.04 higher.

Area	#1 Soybeans	#2 Soft Wheat	#2 Corn	#2 Grain Sorghum
Kansas City				
Friday**	9.89-10.19	4.72	4.46	3.58
Monday	9.93-10.23	4.78	4.50	3.62
Tuesday	9.91-10.11	4.80	4.50	3.62
Wednesday	Closed			
Thursday	Holiday			
Friday	Closed			
St. Louis				
Friday**	10.67-10.71	4.99-5.09	4.54	4.28
Monday	10.76-10.79	5.50-5.15	4.59-4.60	4.32
Tuesday	10.77-10.78	5.07-5.17	4.61-4.63	4.32
Wednesday	Closed			
Thursday	Holiday			
Friday	Closed			
Central				
Friday**	9.89-10.04	4.59	4.08-4.13	—
Monday	9.98-10.08	4.65	4.12-4.17	—
Tuesday	9.96-10.06	4.67	4.12-4.17	—
Wednesday	Closed			—
Thursday	Holiday			—
Friday	Closed			—
S.E. MO				
Friday**	10.69-10.74	4.87	4.50-4.58	—
Monday	10.73-10.78	4.93	4.56-4.65	—
Tuesday	10.71-10.79	5.11	4.56-4.67	—
Wednesday	Closed			—
Thursday	Holiday			—
Friday	Closed			—

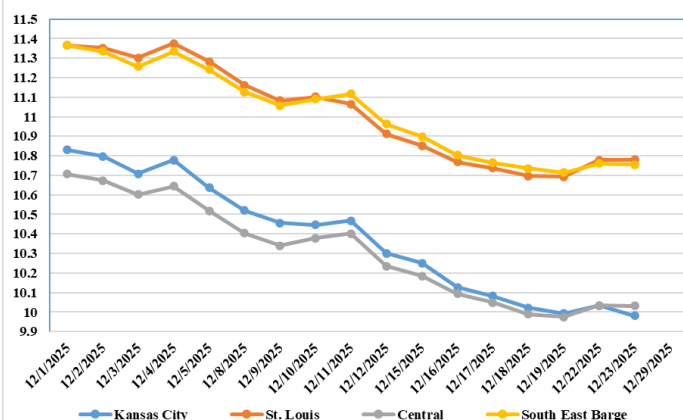
(PRICES PER BUSHEL) *NEW CROP **PREVIOUS WEEK'S PRICES
*Bids calculated using Kansas City, St. Louis, and St. Joseph bids

MONTHLY GRAIN CROP

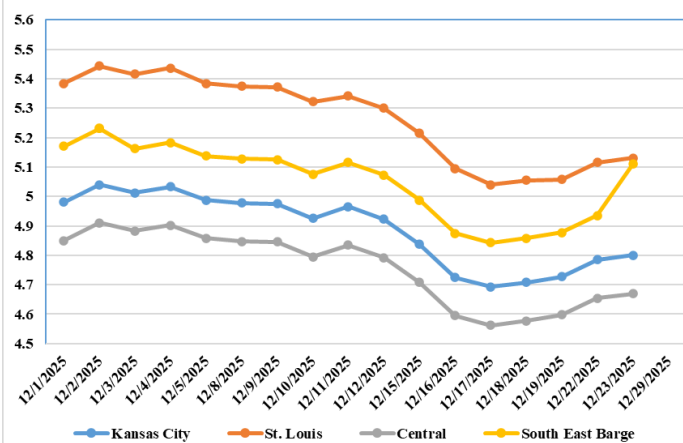
December 2025 Corn Bids



December 2025 Soybean Bids



December 2025 Wheat Bids



*Axis value ranges may be updated to reflect data points.
Only dates in which markets are trading and only current cash bids are represented.

WHOLESALE FEEDSTUFFS PRICES w/e 12/20/25 (DOLLARS PER TON-BULK BASIS)

Area	Cottonseed Meal 41%	Soybean Meal 46.5-48%	Corn Gluten Pellets 21%	Wheat Middlings
Kansas City	306.67	297.30	220.00	326.67
St. Louis	301.67	N/A	202.00	262.50

COLD STORAGE

November 2025 Highlights

Total frozen poultry supplies on November 30, 2025 were down 10 percent from the previous month and down 4 percent from a year ago. Total stocks of chicken were up slightly from the previous month and up 1 percent from last year. Total pounds of turkey in freezers were down 41 percent from last month and down 21 percent from November 30, 2024.

Total red meat supplies in freezers were up 1 percent from the previous month but down 5 percent from last year. Total pounds of beef in freezers were up 3 percent from the previous month but down 3 percent from last year. Frozen pork supplies were down 1 percent from the previous month and down 5 percent from last year. Stocks of pork bellies were up 36 percent from last month but down 7 percent from last year

QUARTLY HOGS AND PIGS

United States Hog Inventory Up 1 Percent

United States inventory of all hogs and pigs on December 1, 2025 was 75.5 million head. This was up 1 percent from December 1, 2024, and up slightly from September 1, 2025.

Breeding inventory, at 5.95 million head, was down 1 percent from last year, but up slightly from the previous quarter.

Market hog inventory, at 69.6 million head, was up 1 percent from last year, and up slightly from last quarter.

The September-November 2025 pig crop, at 35.0 million head, was up slightly from 2024. Sows farrowing during this period totaled 2.93 million head, up slightly from 2024. The sows farrowed during this quarter represented 49 percent of the breeding herd. The average pigs saved per litter was 11.93 for the September-November period, compared to 11.92 last year.

MISSOURI WEEKLY HAY SUMMARY 12/18/2025

Feeding season is underway for most everyone at this point. Even with some snow not enough winter moisture to move the drought monitor in the correct direction. Currently 85 percent of the state is still highlighted in some stage of drought. Hay prices are doing what they typically do in a year where there is a surplus. Mid to lower quality hay is harder to move and prices are weak to lower, higher quality suitable for dairy or horse interest is harder to find and prices are steady. A big warm up forecast for Christmas week will be the gift for livestock producers this year as there shouldn't be any ice to chop or worries of gelled up tractors making one late for Christmas Dinner. The Missouri Department of Agriculture has a hay directory at <https://apps.mda.mo.gov/haydirectory> or visit the University of Missouri Extension feed stuff finder at <https://feedstufffinder.org>

Alfalfa - Supreme 250.00-300.00, small square 10.00-15.00 per bale
Alfalfa - Premium 175.00-225.00
Alfalfa - Good 150.00-175.00, small square 6.00-10.00 per bale
Alfalfa - Fair 125.00-150.00
Mixed Grass—Premium 150.00-200.00
Mixed grass - Good/Premium 100.00-150.00
Mixed grass-Fair/Good 75.00-125.00, small square 3.00-7.00 per bale
Mixed grass - Fair 20.00-45.00 per large round bale
Wheat straw - 4.00-7.00 per small square bale

Please Note: The above volumes (tonnage, acres, and bales) listed are for confirmed trades only, it does not include estimated volume (tonnage) for bids or offers to the trade. List your hay for sale at: [Hay Listing Online Form](#). Explanation of Hay Quality Guidelines: [Hay Quality Designation Guidelines](#). Glossary of Terms: [Livestock, Poultry, & Grain Hay Terms](#)

MISSOURI WEEKLY SHEEP/GOAT AUCTION SUMMARY

Receipts: 5,070 Week Ago: 1,825 Last Year: 3,527

SHEEP: Feeder Lambs: Small and Medium 1-2 30-40 lbs 425.00-450.00; 40-50 lbs 380.00-460.00, fancy 460.00-500.00. Slaughter Sheep Choice and Prime 1-3 woolled and shorn pkg 61 lbs 420.00; 80-110 lbs 290.00-305.00. Choice and Prime 1-3 hair 50-60 lbs 390.00-450.00; 60-70 lbs 385.00-425.00; 70-80 lbs 355.00-390.00; 80-90 lbs 320.00-350.00; 90-110 lbs 270.00-305.00. Choice 1-3 hair 50-60 lbs 380.00-395.00; 60-70 lbs 375.00-380.00; 70-85 lbs 305.00-335.00; 100-120 lbs 225.00-245.00. Slaughter Ewes Good 2-3 hair 100-115 lbs 150.00-175.00. Utility and Good 1-3 hair 95-125 lbs 125.00-145.00. Cull and Utility 1-2 hair 70-80 lbs 75.00. Slaughter Bucks 1-2 Hair 115-145 lbs 180.00-250.00; 150-200 lbs 160.00-175.00. Replacement Sheep Small and Medium 1-2 hair 2-4 yrs 100-115 lbs O 150.00-175.00 per head.; lot 57 hd 2-4 yrs 125 lbs SPR 210.00 per head. 20 head 4-6 yrs 125 lbs WIN 250.00-310.00 per head. Over 6 yrs 115-125 lbs WIN 200.00-210.00 per head.

GOATS: Feeder Kids: Selection 1 30-40 lbs 400.00-460.00; fancy 470.00-475.00; 40-50 lbs 380.00-445.00. Selection 2 20-30 lbs 305.00-350.00; 30-40 lbs 330.00-370.00; 40-50 lbs 320.00-370.00. Wether Kids Selection 1 40-50 lbs 410.00-430.00. Slaughter Kids Selection 1 50-60 lbs 390.00-455.00; 60-70 lbs 395.00-455.00; 70-80 lbs 365.00-400.00; 80-90 lbs 340.00-375.00. Selection 2 50-60 lbs 350.00-390.00; 60-70 lbs 390.00-395.00; 70-90 lbs 310.00-330.00. Selection 3 55-70 lbs 240.00-280.00. Slaughter Nannies Selection 1-2 70-90 lbs 175.00-200.00; 90-150 lbs 180.00-225.00. Wether Kids Selection 1 60-70 lbs 390.00-445.00; 70-90 lbs 375.00-385.00. Replacement Goats: Nannies Selection 1-2 1-4 yrs 75-95 lbs E 230.00-285.00 per cwt.

Explanatory Notes: Stage - Represents estimated lambing/kidding period (Open, Exp=exposed, Bred, Fall = Sep-Nov, Win = Dec-Feb, Spr = Mar-May, Sum=Jun-Aug; w/s = woolled and shorn; /hd= per head; /fam=per family
All price CWT unless otherwise noted.

MISSOURI DROUGHT MONITOR

Date	None	D0	D1	D2	D3	D4
12/23/25	11.72	53.37	29.60	5.31	0.0	0.0
12/26/25	15.29	52.41	26.99	5.31	0.0	0.0
12/24/24	61.24	25.20	13.56	0.0	0.0	0.0

Reflects percentage of Missouri impacted by drought. D0 Abnormally Dry; D1 Moderate Drought; D2 Severe Drought; D3 Extreme Drought; D4 Exceptional Drought

NATIONAL DIRECT DELIVERED FEEDER PIG REPORT

12/19/25 Receipts: 84,963 Week ago: 97,696 Year Ago: 79,688
Early weaned pigs are 1.00 higher and feeder pigs are 1.00- 2.00 higher.

Cash: 34,004 head 54.00-76.00, weighted average 70.18

Formula: 41,059 head 50.13-76.41, weighted average 67.56

Feeder pigs 40 pounds basis: Cash 9,900 head 84.00-88.00, weighted average 86.96

NATIONAL DAILY DIRECT PRIOR DAY HOG REPORTS 12/26/25

BARROWS AND GILTS (Carcass Basis): 1,052 head
Base Carcass Price N/A, weighted average 68.13

SOWS (Live Basis): 3,065 head
300-500 lbs. n/a
Over 500 lbs. 61.39-76.69

MISSOURI WEEKLY DIRECT SLAUGHTER CATTLE REPORT 12/19/25

Weekly Receipts: 240 Week ago: 160 Year ago: 340
Trading as of Friday morning, early week trade of Flat dressed sales at mostly 355.00, 5.00 higher than last week and one load at 358.00. With Grid dressed sales inactive.

LIVE STEERS & HEIFERS: No sales reported.
DRESSED STEERS & HEIFERS: 5 loads Wed. at 355.00 Flat.
1 load Thurs. at 358.00.

GRADE AND EIGHT (Grid): No Sales reported.

Click here for the current [National Crop Progress](#)

Click here for the current [Missouri Crop Progress](#)

The current hay directory can be found at: [Hay Directory](#).