

Weekly Market Summary

Published by:
Missouri Department of Agriculture
Ag Business Development Division
Market News Program



Chris Chinn, Director
Jill Wood, Division Director
Tony Hancock, Editor
[agmarketnews.mo.gov](http://www.ams.usda.gov/marketnews.htm)
<http://www.ams.usda.gov/marketnews.htm>

Michael Kehoe, Governor

Volume XLVI, Number 1 ♦ P.O. Box 630, Jefferson City, MO 65102 ♦ (573) 751-4211 ♦ Mon, Jan 05, 2026

MISSOURI WEEKLY FEEDER CATTLE WEIGHTED AVERAGE REPORT

Feeder Cattle Receipts: 27,139 Week ago: 0 Year ago: 0

Steers and Heifers Medium and Large 1—Weighted average weights and prices

STEERS: Medium and Large 1

323 lbs. 623.56	528 lbs. 478.39	721 lbs. 372.13	927 lbs. 320.02
388 lbs. 584.39	572 lbs. 448.58	774 lbs. 359.46	971 lbs. 322.32
425 lbs. 545.91	625 lbs. 422.16	825 lbs. 347.35	1026 lbs. 308.00
471 lbs. 512.88	672 lbs. 398.95	873 lbs. 346.24	

HEIFERS: Medium and Large 1

324 lbs. 549.86	529 lbs. 417.08	720 lbs. 341.01
378 lbs. 502.69	576 lbs. 392.05	775 lbs. 328.92
430 lbs. 484.28	621 lbs. 371.92	820 lbs. 320.05
475 lbs. 453.14	675 lbs. 349.44	869 lbs. 312.11

MISSOURI STEER (HEIFER) STOCKER FORMULA 1/05/2026

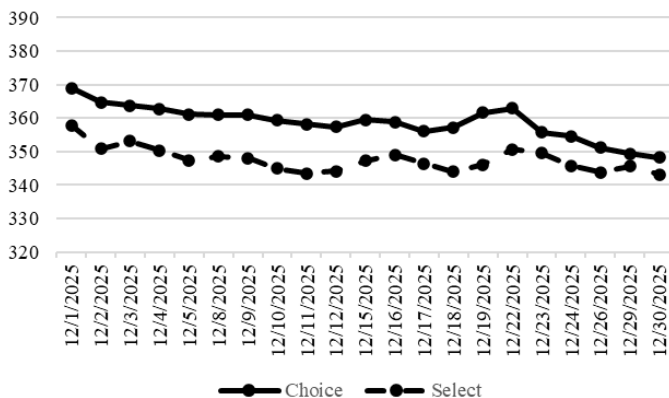
Monday's Missouri Stocker formula consists of **4401 (3964)** head with a weighted average weight of **554.10 (551.40)** lbs. and a price value of **447.84 (400.44)**, 4.99 higher (9.06 lower) than a week ago. *data limited due to lack of sales during the holidays*

This a rolling seven day calculated weighted value which combines all Feeder Steers reported by MDA/USDA Market News Service weighing from 400-649 lbs. in the Medium and Large 1 and Medium and Large 1-2 frame and muscle classifications, including all com-

NATIONAL BOXED BEEF CUTOUT VALUES

DATE	CHOICE	SELECT	TOTAL LOADS
12/29	349.33	345.62	113
12/30	348.20	343.16	209
12/31	347.50	342.38	211
Holiday	-	-	-
1/2	349.97	346.92	85
5 Day Simple Average	348.73	344.52	

Boxed Beef Cuts December 2025



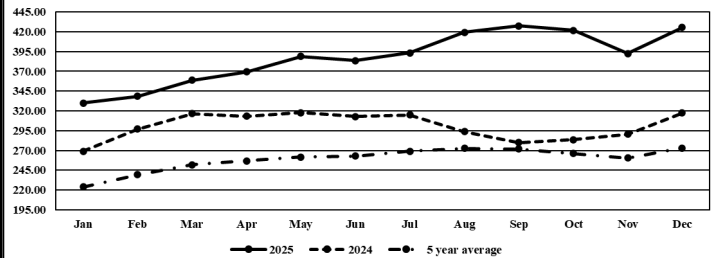
*Axis value ranges may be updated to reflect data points.

WEEKLY LIVESTOCK SLAUGHTER

	CATTLE	HOGS	SHEEP
Week to Date:	474,000	2,228,000	34,000
Last Week:	426,000	1,978,000	36,000
Last Year:	504,893	2,269,794	32,260

The Weekly Market Summary, as well as historical summaries, are available on our website <https://agmarketnews.mo.gov/summaries>
Market News Hotline: 1-573-522-9244
Check out the latest updates on our YouTube Channel: [MDA Market News](https://www.youtube.com/channel/UCM4M4M4M4M4M4M4M4M4M4M4)

Missouri Stocker Formula - Steers



*Graph is updated the first Monday of each month. Axis value ranges may be updated to reflect data points.

MISSOURI WEEKLY CATTLE AUCTION SUMMARY

Total Receipts: 27,938 Week Ago: 0 Year Ago: 0

No good price comparison available as the most recent sales were prior to the holidays two weeks ago, and the few sales held this week were all pre-vac sales not really allowing an apples-to-apples comparison. With that being said, prices were quite impressive and undoubtedly higher than sales prior to Christmas. The supply was made up of mostly steers and most over 600 lbs. as this week's sales were mostly all special sales this wasn't really as out of line as it might seem on the surface. It is still a long time before grass arrives, but thus far winter has been fairly mild. Buyers have been aggressively buying cattle for wheat grazing even though many areas could use some moisture. Overall supplies are expected to remain tight for the foreseeable future and many grass interest will likely come to the market well before grass even starts to green. This has been the case for the last few years but each year it seems buyers come earlier and earlier fearing they have to beat the next guy to get the kind and quality they want. Prices for most weights of calves under 650 lbs. is back to record or very near record levels and most producers generally aren't any too eager to hold them for any extra amount of extended time either. Stick out sales this week included: several drafts from Ozarks Regional Stockyards including 21 head of 474 lb. steers that sold for 520.00; 24 head of 548 lb. steers at 492.50; a load of 619 lb. steers at 437.50; and 25 head of 668 lb. steers at 420.00. Four State Stockyards sold 25 head of 563 lb. steers for 470.00. Springfield Livestock Marketing Center sold 44 head of 717 lb. steers for 395.75. Joplin Regional Stockyards sold two loads of 774 lb. steers for 376.00 and 263 head of 853 lb. steers for 360.00. A couple of heifer drafts included 19 head of 544 lb. heifers at Ozark Regional Stockyards that sold for 440.00 and 22 head of 704 lb. heifers at Mo-Kan Livestock Market that brought 350.00. Boxed beef cutout values closed mixed for the week. Choice closed on Friday at 349.97, down 1.24 and select closed at 346.92, up 3.12 compared to last week. The choice/select spread has narrowed to only 3.05 per cwt. Negotiated feedlot sales as of the 2:00 cutoff time on Friday afternoons report came in just under 26K head. It is likely more volume was traded after the report cutoff time. Live prices were mostly in the 228.00-232.00 range once again this week prices gained strength as the week progressed. Dressed sales reported mostly at 360.00. The Missouri Stocker formula consists of 4401 head with a weighted average weight of 554.10 lbs. and a price value of 447.84, 4.99 higher than last week. The steer/heifer spread is 47.44.

SOUTHWEST MISSOURI WEEKLY SUMMARY

(Joplin, Springfield, Exeter)

Receipts: 19,188 Week ago: 0 Year Ago: 0

Compared to last tested sales prior to the holidays, the special prevac sales this week sold with sharply higher undertones. Cows prices from pre holiday sales.

FEEDER STEERS:

Medium and Large 1

300-400 lbs.	560.00-645.00
400-500 lbs.	460.00-587.50
500-600 lbs.	410.00-505.00
600-700 lbs.	371.00-452.00
700-800 lbs.	343.00-395.75
800-900 lbs.	330.50-360.00
900-1000 lbs.	312.25-335.50

FEEDER HEIFERS:

Medium and Large 1

300-400 lbs.	451.00-555.00
400-500 lbs.	415.00-510.00
500-600 lbs.	361.00-455.00
600-700 lbs.	341.00-405.50
700-800 lbs.	321.00-355.00
800-900 lbs.	302.00-356.25

FEEDER HOLSTEIN STEERS

Large 3

Scarce

SLAUGHTER COWS: Breaking and Boning (70-85% lean) 135.00-164.00; high dressing 154.00-179.00; low dressing 125.00-149.00 Lean (85-90%) 122.50-147.00; high dressing 137.50-155.00; low dressing 80.00-127.00

SLAUGHTER BULLS: Yield

Grade 1-2 1250-2405 lbs. 170.00-207.00; high dressing 190.00-223.00; low dressing 142.00-181.00.

BRED COWS: Medium and Large 1, 1095-1670 lbs., 2nd -3rd stage, 2-8 yrs. 2800.00-4300.00; over 8 yrs. 3000.00-3100.00 per head

BRED HEIFERS: Medium and Large 1 1 1/2-4 yrs 919-1280 lbs 2nd and 3rd stage 3900.00-4600.00 per head

COW CALF PAIRS: Medium and Large 1 with baby to 300 lb. calves, 2-8 yrs., Open, 4500.00-5150.00 per pair;

Medium and Large 1-2 with baby to 300 lb. calves, 2-8 yrs. Open 3300.00-4300.00 per pair

SOUTH CENTRAL MISSOURI WEEKLY SUMMARY

(West Plains, Phillipsburg)

Receipts: 6,427 Week ago: 0 Year Ago: 0

Compared to last sale two weeks ago, feeders over 750 lbs sold 5.00-8.00 higher, weights under sold 12.00-17.00 higher, with some very light weights up to 40.00 higher. Cow prices from w/e 12/20/25

FEEDER STEERS:

Medium and Large 1

300-400 lbs.	555.00-640.00
400-500 lbs.	520.00-585.00
500-600 lbs.	441.00-485.00
600-700 lbs.	390.00-450.00
700-800 lbs.	344.00-404.00
800-900 lbs.	330.00-352.00

FEEDER HEIFERS:

Medium and Large 1

300-400 lbs.	485.00-580.00
400-500 lbs.	465.00-525.00
500-600 lbs.	382.50-455.00
600-700 lbs.	333.00-387.50
700-800 lbs.	325.00-339.00
800-875 lbs.	312.00-322.50

FEEDER HOLSTEIN STEERS:

Large 3

400-450 lbs. 265.00

SLAUGHTER COWS: Breaking and Boning (70-85% lean) 145.50-165.50; high dressing 163.00-177.00; low dressing 131.00-149.00 Lean (85-90%) 125.00-144.00, high dressing 145.00-161.00 low dressing 104.00-125.00

SLAUGHTER BULLS: Yield

Grade 1-2 1195-2005 lbs. 170.00-189.00; high dressing 190.00-198.00; low dressing 152.50-165.00

BRED COWS: Medium and Large 1-2 965-1400 lbs. 2-8 yrs. 1st stage, 2500.00-2600.00; 2nd-3rd stage 1975.00-3650.00; Over 8 years, 2nd-3rd stage 2250.00-2850.00

COW CALF PAIRS: Scarce

WEST CENTRAL MISSOURI WEEKLY SUMMARY

(Kingsville, Windsor, Butler, Osceola)

Receipts: 1,702 Week ago: 0 Year ago: 0

Compared to two weeks ago feeders sold steady to 10.00 higher. Slaughter cows sold 3.00-5.00 higher.

FEEDER STEERS:

Medium and Large 1

400-500 lbs.	482.00-560.00
500-600 lbs.	437.50-489.00
600-700 lbs.	388.00-425.00
700-800 lbs.	364.00-381.50
800-900 lbs.	341.00-354.00
Load 939 lbs.	329.00

FEEDER HEIFERS:

Medium and Large 1

350-400 lbs.	521.00-555.00
400-500 lbs.	430.00-489.00
500-600 lbs.	384.00-452.00
600-700 lbs.	359.00-389.00
700-750 lbs.	336.00-350.00
800-900 lbs.	311.50-317.50

SLAUGHTER BULLS: Yield

Grade 1-2 1410-1800 lbs. 179.00-194.00; low dressing 164.50-168.00

SLAUGHTER COWS: Breaking

and Boning (70-85% lean) 143.00-168.00, high dressing 157.00-176.00, low dressing 130.00-140.00 Lean (85-90%) 129.00-135.00

BRED COWS: Scarce

BRED HEIFERS: Scarce

NORTHEAST MISSOURI WEEKLY SUMMARY

(Bowling Green, Kingdom City, Palmyra) w/e 12/20/25

Receipts: 4,962 Week ago: 6,274 Year ago: 4,451

Compared to last week, feeders sold steady to 6.00 higher, with four loads of 850-900 lbs steers 15.00-20.00 higher. Slaughter cows sold steady to firm.

FEEDER STEERS:

Medium and Large 1

350-400 lbs.	502.50-527.50
400-500 lbs.	465.00-527.50
500-600 lbs.	395.00-468.00
600-700 lbs.	360.00-418.00
700-800 lbs.	352.50-385.00
800-900 lbs.	344.00-368.00

FEEDER HEIFERS:

Medium and Large 1

300-400 lbs.	440.00-510.00
400-500 lbs.	415.00-472.50
500-600 lbs.	365.00-413.00
600-700 lbs.	335.00-382.00
700-750 lbs.	322.50-363.00
800-850 lbs.	306.00-319.00

SLAUGHTER BULLS: Yield

Grade 1-2 1350-2135 lbs. 185.00-198.00; high dressing 202.00-217.00; low dressing 166.00-181.00

SLAUGHTER COWS: Breaking

and Boning, (70-85% lean) 146.00-164.00; high dressing 160.00-181.00 Lean (85-90%) 138.00-153.00; low dressing 121.00-140.00

SLAUGHTER STEERS: Choice

2-3 220.00-222.25

SLAUGHTER HEIFERS: Choice

2-3 218.50-221.75

BRED COWS: Medium and Large 1 2/8 yrs 1100-1500 lbs 2n

and 3rd stage 3300.00-3850.00

BRED HEIFERS: Medium and Large 1 1 1/2-2 yrs 1075-1200 lbs

3rd stage 4100.00-4500.00

NORTH CENTRAL MISSOURI WEEKLY SUMMARY

(Macon, Unionville, Green City, New Cambria)

Receipts: 621 Week ago: 0 Year ago: 0

Special cow sale with no test of the feeder market this week.

*Some sale barns on a bi-weekly schedule and may not have a sale each week.

FEEDER STEERS:

Medium and Large 1

300-400 lbs.	Not tested
400-500 lbs.	
500-600 lbs.	
600-700 lbs.	
700-800 lbs.	
800-850 lbs.	

FEEDER HEIFERS:

Medium and Large 1

300-400 lbs.	Not tested
400-500 lbs.	
500-600 lbs.	
600-700 lbs.	
700-800 lbs.	
800-900 lbs.	

SLAUGHTER BULLS: not tested

SLAUGHTER COWS: not tested

BRED COWS: Medium and Large 1-2, 2-8 yrs., 1140-1400 lbs

2nd and 3rd stage, 2950.00-3800.00 per head

BRED HEIFERS: Medium and Large 1, under 2 yrs. 3rd stage

1050-1175 lbs. 4000.00-4575.00.

SOUTHEAST MISSOURI WEEKLY SUMMARY

(Jackson and Farmington) w/e 12/20/25

Receipts: 1,123 Week ago: 1,399 Year ago: 1,557

Compared to last week, feeders sold steady to 35.00 higher. Slaughter cows and bulls sold steady to 2.00 higher.

FEEDER STEERS:

Medium and Large 1

300-400 lbs. 412.00-510.00
400-500 lbs. 400.00-479.00
500-600 lbs. 377.00-425.00
600-650 lbs. 350.00-410.00
700-800 lbs. 312.00-340.00
800-900 lbs. 330.00-342.00

FEEDER HEIFERS:

Medium and Large 1

300-400 lbs. 405.00-480.00
400-500 lbs. 360.00-460.00
500-600 lbs. 345.00-445.00
600-700 lbs. 315.00-365.00
700-800 lbs. 290.00-336.00

SLAUGHTER BULLS: Yield
Grade 1-2 1255-2250 lbs. 151.00-
198.00, high dressing 176.00-
212.00, low dressing 125.00-
150.00

SLAUGHTER COWS: Breaking
and Boning (75-85% lean) 135.00-
153.00; high dressing 152.00-
182.00; Lean (85-90% lean) 90.00-
126.00; high dressing 128.00-
157.00

BRED COWS: Medium and Large
2 1070-1415 lbs 2-8 yrs 2nd-3rd
stage 2000.00-2500.00 per head

COW & CALF PAIRS: Scarce

EAST CENTRAL MISSOURI WEEKLY SUMMARY

(Cuba, Vienna) w/e 12/20/25

Receipts: 1,261 Week Ago: 3,745 Year ago: 1,738

Compared to last week, feeders sold 5.00-15.00 higher, except a few heifers under 400 lbs. 10.00-15.00 lower. Slaughter cows sold steady.

FEEDER STEERS:

Medium and Large 1

300-400 lbs. 505.00-515.00
400-500 lbs. 435.00-522.50
500-600 lbs. 395.00-456.00
600-700 lbs. 365.00-415.00
800-850 lbs. 316.00

FEEDER HEIFERS:

Medium and Large 1

300-400 lbs. 430.00-460.00
400-500 lbs. 400.00-445.00
500-600 lbs. 369.00-415.00
600-650 lbs. 357.50-360.00
750-800 lbs. 295.00-302.00
900-1000 lbs. 241.00-286.50

SLAUGHTER BULLS: Yield
Grade 1-2 1500-2060 lbs 180.00-
191.00; low dressing 151.00-
178.00

SLAUGHTER COWS: Breaking
and Boning, (70-85% lean) 150.00-
162.50, high dressing 162.00-
169.00, low dressing 145.00-
152.00; Lean (85-90%) 131.00-
149.00, low dressing 116.00-
132.00

BRED COWS: Medium and
Large 1, 1170-1565 lbs., 2-8 yrs.,
2nd-3rd stage, 2900.00-3525.00

BRED HEIFERS: Medium and
Large 1-2, 860-1106 lbs., Under 2
yrs., 2nd-3rd stage, 3500.00-
4250.00

NORTHWEST MISSOURI WEEKLY SUMMARY

(Tina) (w/e 12/27/25)

Receipts: 1,200 Last week: 2,420 Year ago: 0

Compared to last week, feeders sold with steady to higher undertones on a light test of most weight classes, 600-650 lb steers sold 10.00-15.00 higher. Slaughter cows sold steady.

FEEDER STEERS:

Medium and Large 1

400-500 lbs. 495.00-510.00
600-700 lbs. 368.00-431.50
700-800 lbs. 363.00-366.00

FEEDER HEIFERS:

Medium and Large 1

300-400 lbs. 450.00-485.00
400-500 lbs. 434.00-460.00
500-600 lbs. 418.00-425.00
600-700 lbs. 363.00-377.00
700-750 lbs. 360.25-368.00

SLAUGHTER BULLS: Yield
Grade 1-2 1400-1900 lbs. 181.00-
190.00; high dressing ind. 205.00

SLAUGHTER COWS: Breaking
and Boning, (70-85% lean) 140.00-
163.00, high dressing 157.00-
168.00; Lean (85-90%) 130.00-
143.50, low dressing 119.00-129.00

BRED COWS: Scarce

BRED HEIFERS: Scarce

AFTERNOON NATIONAL SLAUGHTER CATTLE REVIEW

So far for Friday, negotiated cash trade has been limited on moderate demand in Kansas. There have been a few live purchases at 232.00, but not enough for an adequate market test. The last established market in Kansas was last week with live purchases at 229.00. Negotiated cash trade has been light to moderate on moderate demand in Nebraska and the Western Cornbelt. Compared to last week in Nebraska, live purchases have been 2.00 higher at 232.00 and dressed purchases have been 4.00 higher at 360.00. Compared to Wednesday in the Western Cornbelt, live purchases have been steady to 2.00 higher from 230.00-232.00. Dressed purchases have been steady to 4.00 higher at 360.00 when compared to last weeks light test in the Western Cornbelt

Negotiated Cash Sales:

Confirmed:	15,417	Week Ago:	1,049	Year Ago:	46,139
Week to date:	25,712	Week Ago:	36,174	Year Ago:	68,733

<u>Live Basis</u>	<u>Steers</u>	<u>Heifers</u>
Over 80% Choice	230.00-232.00 avg 231.44	230.00-232.00 avg 231.80
65-80% Choice	232.00-232.00 avg 232.00	232.00-232.00 avg 232.00
35-65% Choice	-	-
0-35% Choice	-	-
Total All Grades	230.00-232.00 avg 231.45	230.00-232.00 avg 231.82
<u>Dressed Basis</u>		
Over 80% Choice	355.00-360.00 avg 359.78	358.00-360.00 avg 359.89
65-80% Choice	360.00-360.00 avg 360.00	-
35-65% Choice	-	-
0-35% Choice	-	-
Total All Grades	355.00-360.00 avg 359.81	358.00-360.00 avg 359.89

<u>All Beef Type Steers/Heifers</u>	<u>Head</u>	<u>Avg Wt</u>	<u>Price Range</u>	<u>Wtd Avg</u>
Live FOB	9,571	1505.6	228.00-233.00	231.53
Live Del	337	1427.8	232.00-233.00	232.46
Dressed Del	5,179	986.7	355.00-375.00	360.41
Dressed FOB	36	992.0	362.00-362.00	362.00

WEEKLY COMMODITY FUTURES TRENDS

Compared to last week, Live Cattle 6.20 to 9.27 higher, Lean Hogs nearby 0.05 to 0.42 lower, distant 0.05 to 0.42 higher, Feeder Cattle 9.93 to 13.15 higher.

Daily Futures Closes

	Mon.	Tues.	Wed.	Thu.	Fri.
Cattle					
Dec	228.90	231.17	232.00	Holiday	—
Feb	228.97	230.47	231.60		236.00
Apr	229.52	230.97	232.20		235.97
Jun	224.17	225.80	226.77		230.35
Aug	220.95	222.67	223.55		227.07
Lean Hogs					
Feb	84.47	85.45	85.10	Holiday	94.40
Apr	89.40	90.17	89.90		89.10
May	93.45	94.05	94.00		93.37
Jun	102.42	102.97	102.87		102.37
Jul	103.57	103.92	103.85		103.72
Fdr Cattle					
Jan	347.00	349.55	350.25	Holiday	356.10
Mar	341.67	344.57	345.32		352.95
Apr	340.42	343.42	344.22		352.25
May	338.10	341.22	342.10		360.20
Aug	338.17	340.97	341.82		349.70
Milk					
Dec	15.87	15.88	15.86	Holiday	—
Jan	15.24	15.42	15.22		15.10
Feb	15.43	15.86	15.60		15.34

WEEKLY COMMODITY GRAIN FUTURES TRENDS

Compared to last week, Soybeans 0.21 to 0.29 lower, Wheat 0.10 to 0.13 lower, Corn 0.10 to 0.12 lower, Soybean Meal 9.10 to 12.70 lower.

Daily Grain Futures Closes

	Mon.	Tues.	Wed.	Thu.	Fri.
Soybeans					
Jan	1049 1/2	1046 1/4	1030 1/2	Holiday	1029 1/2
Mar	1063 1/2	1062 1/4	1047 1/2		1045 3/4
May	1075 1/4	1074 1/2	1061		1058 1/2
Jul	1087 1/4	1086	1074 1/4		1072
Aug	1084 3/4	1083	1072 1/2		1070 1/2
Wheat					
Mar	513	510 3/4	507	Holiday	506 1/2
May	524 3/4	522	518 1/2		518 1/4
Jul	537 1/4	534	531 1/4		531
Sep	551 1/2	548 1/2	545 3/4		545 3/4
Dec	570 1/4	567 1/2	564 3/4		564 3/4
Corn					
Mar	442 1/4	440 1/2	440 1/4	Holiday	437 1/2
May	450 3/4	448 1/2	448 1/4		445 1/2
Jul	457	454 1/2	454 1/2		452
Sep	451 1/2	449	448 1/2		446 1/2
Dec	463	461	460 1/2		458 1/2
KC Wheat					
Mar	527 1/4	522	514 3/4	Holiday	515
May	540 1/4	535	528		528
Jul	553 1/2	548 1/2	542		542
Sep	568 1/2	563 1/2	557 1/4		557 1/4
Dec	588	583 1/4	576 3/4		577 1/4
SB Meal					
Jan	298.80	296.70	294.50	Holiday	291.00
Mar	303.30	302.30	299.40		296.00
May	307.30	306.80	304.00		299.90
Jul	312.50	312.10	309.50		305.60
Aug	313.80	313.70	311.40		307.70

MISSOURI GRAIN WEEKLY TRENDS

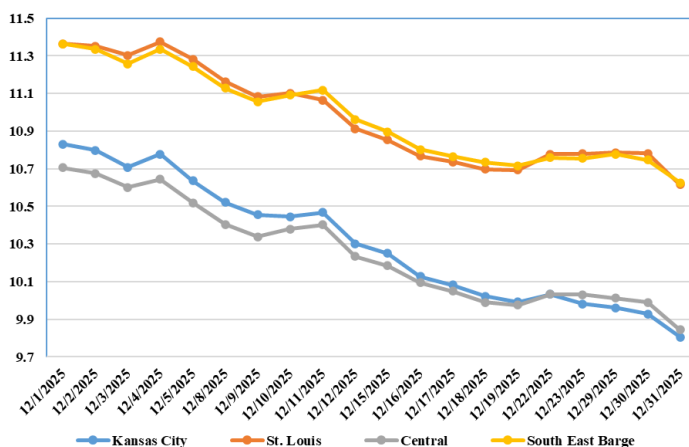
Compared to last week, Soybeans 0.04 to 0.18 lower, Wheat 0.10 to 0.11 lower, Corn 0.07 to 0.10 lower, Sorghum 0.05 to 0.10 lower.

Area	#1 Soybeans	#2 Soft Wheat	#2 Corn	#2 Grain Sorghum
Kansas City				
Friday**	Closed			
Monday	9.89-10.09	4.76	4.45	3.57
Tuesday	9.86-10.06	4.73	4.43	3.55
Wednesday	9.75-9.90	4.70	4.43	3.55
Thursday	Closed			
Friday	9.73-10.15	4.69	4.40	3.52
St. Louis				
Friday**	Closed			
Monday	10.77-10.79	5.03-5.11	4.59	4.27
Tuesday	10.77-10.79	5.00-5.08	4.55-4.58	4.25
Wednesday	10.61	4.97-5.05	4.55-4.57	4.25
Thursday	Closed			
Friday	10.62-10.63	4.96-5.07	4.54	4.27
Central				
Friday**	Closed			
Monday	9.94-10.04	4.63	4.07-4.12	
Tuesday	9.93-10.02	4.60	4.05-4.10	
Wednesday	9.78-9.87	4.57	4.05-4.10	
Thursday	Closed			
Friday	9.85-9.95	4.56	4.02-4.07	
S.E. MO				
Friday**	Closed			
Monday	10.69-10.82	5.07	4.51-4.62	
Tuesday	10.67-10.79	4.80	4.49-4.60	
Wednesday	10.60-10.63		4.55-4.63	
Thursday	Closed			
Friday	10.45-10.64		4.52-4.60	

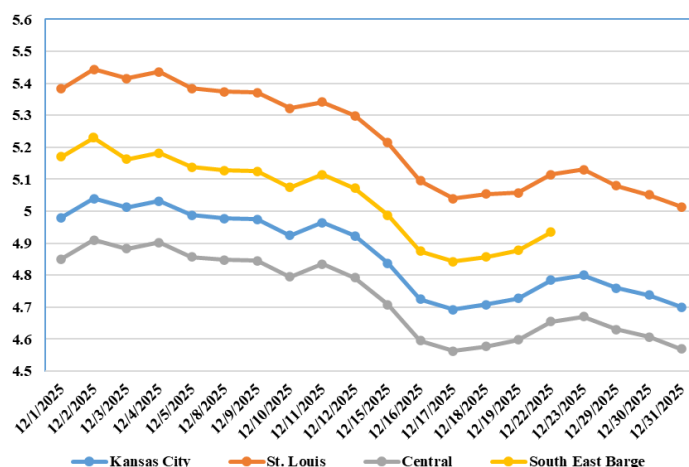
(PRICES PER BUSHEL) *NEW CROP **PREVIOUS WEEK'S PRICES
*Bids calculated using Kansas City, St. Louis, and St. Joseph bids

MONTHLY GRAIN CROP

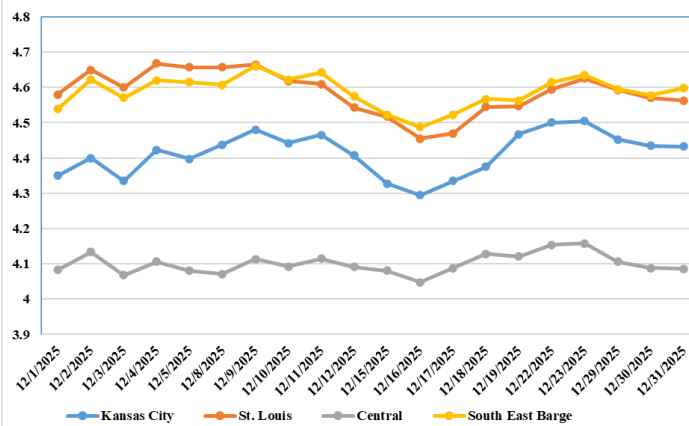
December 2025 Soybean Bids



December 2025 Wheat Bids



December 2025 Corn Bids



*Axis value ranges may be updated to reflect data points.
Only dates in which markets are trading and only current cash bids are represented.

WHOLESALE FEEDSTUFFS PRICES w/e 12/20/25 (DOLLARS PER TON-BULK BASIS)

Area	Cottonseed Meal 41%	Soybean Meal 46.5-48%	Corn Gluten Pellets 21%	Wheat Middlings
Kansas City	306.67	297.30	220.00	326.67
St. Louis	301.67	N/A	202.00	262.50

GRAIN CRUSHING AND CO-PRODUCTS

Highlights

October 2025 contained 31 days.
November 2025 contained 30 days.

Total corn consumed for alcohol and other uses was 519 million bushels in November 2025. Total corn consumption was down 1 percent from October 2025 and down less than 1 percent from November 2024. November 2025 usage included 93.0 percent for alcohol and 7.0 percent for other purposes. Corn consumed for beverage alcohol totaled 3.45 million bushels, down 2 percent from October 2025 and down 11 percent from November 2024. Corn for fuel alcohol, at 472 million bushels, was down 1 percent from October 2025 but up slightly from November 2024. Corn consumed in November 2025 for dry milling fuel production and wet milling fuel production was 92.0 percent and 8.0 percent, respectively.

Dry mill co-product production of distillers dried grains with solubles (DDGS) was 1.75 million tons during November 2025, down 9 percent from October 2025 and down 5 percent from November 2024. Distillers wet grains (DWG) 65 percent or more moisture was 1.26 million tons in November 2025, up 2 percent from October 2025 and up 1 percent from November 2024.

Wet mill corn gluten feed production was 251,463 tons during November 2025, down slightly from October 2025 and down 3 percent from November 2024. Wet corn gluten feed 40 to 60 percent moisture was 186,284 tons in November 2025, down 2 percent from October 2025 and down 15 percent from November 2024

MISSOURI WEEKLY HAY SUMMARY 12/18/2025

Feeding season is underway for most everyone at this point. Even with some snow not enough winter moisture to move the drought monitor in the correct direction. Currently 85 percent of the state is still highlighted in some stage of drought. Hay prices are doing what they typically do in a year where there is a surplus. Mid to lower quality hay is harder to move and prices are weak to lower, higher quality suitable for dairy or horse interest is harder to find and prices are steady. A big warm up forecast for Christmas week will be the gift for livestock producers this year as there shouldn't be any ice to chop or worries of gelled up tractors making one late for Christmas Dinner. The Missouri Department of Agriculture has a hay directory at <https://apps.mda.mo.gov/haydirectory> or visit the University of Missouri Extension feed stuff finder at <https://feedstufffinder.org>

Alfalfa - Supreme 250.00-300.00, small square 10.00-15.00 per bale
Alfalfa - Premium 175.00-225.00
Alfalfa - Good 150.00-175.00, small square 6.00-10.00 per bale
Alfalfa - Fair 125.00-150.00
Mixed Grass—Premium 150.00-200.00
Mixed grass - Good/Premium 100.00-150.00
Mixed grass-Fair/Good 75.00-125.00, small square 3.00-7.00 per bale
Mixed grass - Fair 20.00-45.00 per large round bale
Wheat straw - 4.00-7.00 per small square bale

Please Note: The above volumes (tonnage, acres, and bales) listed are for confirmed trades only, it does not include estimated volume (tonnage) for bids or offers to the trade. List your hay for sale at: [Hay Listing Online Form](#). Explanation of Hay Quality Guidelines: [Hay Quality Designation Guidelines](#). Glossary of Terms: [Livestock, Poultry, & Grain Hay Terms](#)

MISSOURI WEEKLY SHEEP/GOAT AUCTION SUMMARY

Receipts: 5,070 Week Ago: 1,825 Last Year: 3,527
w/e 12/27/25

SHEEP: Feeder Lambs: Small and Medium 1-2 30-40 lbs 425.00-450.00; 40-50 lbs 380.00-460.00, fancy 460.00-500.00. Slaughter Sheep Choice and Prime 1-3 woolled and shorn pkg 61 lbs 420.00; 80-110 lbs 290.00-305.00. Choice and Prime 1-3 hair 50-60 lbs 390.00-450.00; 60-70 lbs 385.00-425.00; 70-80 lbs 355.00-390.00; 80-90 lbs 320.00-350.00; 90-110 lbs 270.00-305.00. Choice 1-3 hair 50-60 lbs 380.00-395.00; 60-70 lbs 375.00-380.00; 70-85 lbs 305.00-335.00; 100-120 lbs 225.00-245.00. Slaughter Ewes Good 2-3 hair 100-115 lbs 150.00-175.00. Utility and Good 1-3 hair 95-125 lbs 125.00-145.00. Cull and Utility 1-2 hair 70-80 lbs 75.00. Slaughter Bucks 1-2 Hair 115-145 lbs 180.00-250.00; 150-200 lbs 160.00-175.00. Replacement Sheep Small and Medium 1-2 hair 2-4 yrs 100-115 lbs O 150.00-175.00 per head.; lot 57 hd 2-4 yrs 125 lbs SPR 210.00 per head. 20 head 4-6 yrs 125 lbs WIN 250.00-310.00 per head. Over 6 yrs 115-125 lbs WIN 200.00-210.00 per head.

GOATS: Feeder Kids: Selection 1 30-40 lbs 400.00-460.00; fancy 470.00-475.00; 40-50 lbs 380.00-445.00. Selection 2 20-30 lbs 305.00-350.00; 30-40 lbs 330.00-370.00; 40-50 lbs 320.00-370.00. Wether Kids Selection 1 40-50 lbs 410.00-430.00. Slaughter Kids Selection 1 50-60 lbs 390.00-455.00; 60-70 lbs 395.00-455.00; 70-80 lbs 365.00-400.00; 80-90 lbs 340.00-375.00. Selection 2 50-60 lbs 350.00-390.00; 60-70 lbs 390.00-395.00; 70-90 lbs 310.00-330.00. Selection 3 55-70 lbs 240.00-280.00. Slaughter Nannies Selection 1-2 70-90 lbs 175.00-200.00; 90-150 lbs 180.00-225.00. Wether Kids Selection 1 60-70 lbs 390.00-445.00; 70-90 lbs 375.00-385.00. Replacement Goats: Nannies Selection 1-2 1-4 yrs 75-95 lbs E 230.00-285.00 per cwt.

Explanatory Notes: Stage - Represents estimated lambing/kidding period (Open, Exp=exposed, Bred, Fall = Sep-Nov, Win = Dec-Feb, Spr = Mar-May, Sum=Jun-Aug; w/s = woolled and shorn; /hd= per head; /fam=per family
All price CWT unless otherwise noted.

MISSOURI DROUGHT MONITOR

Date	None	D0	D1	D2	D3	D4
12/30/25	5.70	50.20	38.20	5.89	0.0	0.0
12/23/25	11.72	53.37	26.60	5.31	0.0	0.0
12/31/24	63.89	22.55	13.56	0.0	0.0	0.0

Reflects percentage of Missouri impacted by drought. D0 Abnormally Dry; D1 Moderate Drought; D2 Severe Drought; D3 Extreme Drought; D4 Exceptional Drought

NATIONAL DIRECT DELIVERED FEEDER PIG REPORT

1/02/26 Receipts: 98,796 Week ago: 170,093 Year Ago: 108,381
Early weaned pigs are mostly 5.00 higher and feeder pigs are mostly 3.00 higher.

Cash: 63,730 head 62.00-86.00, weighted average 77.20

Formula: 21,866 head 56.68-80.01, weighted average 69.66

Feeder pigs 40 pounds basis: Cash 13,200 head 89.00-108.00, weighted average 96.08

NATIONAL DAILY DIRECT PRIOR DAY HOG REPORTS 1/02/26

BARROWS AND GILTS (Carcass Basis): 1,646 head
Base Carcass Price 65.00-73.00, weighted average 70.16

SOWS (Live Basis): 5,954 head
300-500 lbs. 30.00-72.00
Over 500 lbs. 45.00-72.00

MISSOURI WEEKLY DIRECT SLAUGHTER CATTLE REPORT 12/19/25

Weekly Receipts: 240 Week ago: 160 Year ago: 340
Trading as of Friday morning, early week trade of Flat dressed sales at mostly 355.00, 5.00 higher than last week and one load at 358.00. With Grid dressed sales inactive.

LIVE STEERS & HEIFERS: No sales reported.	DRESSED STEERS & HEIFERS: 5 loads Wed. at 355.00 Flat. 1 load Thurs. at 358.00.
---	--

GRADE AND EIGHT (Grid): No Sales reported.

Click here for the current [National Crop Progress](#)

Click here for the current [Missouri Crop Progress](#)

The current hay directory can be found at: [Hay Directory](#).