

Weekly Market Summary

Published by:
Missouri Department of Agriculture
Ag Business Development Division
Market News Program



Chris Chinn, Director
Jill Wood, Division Director
Tony Hancock, Editor
<http://www.ams.usda.gov/marketnews.htm>
<http://www.ams.usda.gov/marketnews.htm>

Michael Kehoe, Governor

Volume XLVI, Number 2 ♦ P.O. Box 630, Jefferson City, MO 65102 ♦ (573) 751-4211 ♦ Mon, Jan 12, 2026

MISSOURI WEEKLY FEEDER CATTLE WEIGHTED AVERAGE REPORT

Feeder Cattle Receipts: 65,945 Week ago: 27,139 Year ago: 13,471
Steers and Heifers Medium and Large 1—Weighted average weights and prices

STEERS: Medium and Large 1

245 lbs. 672.27	426 lbs. 542.48	621 lbs. 434.92	826 lbs. 352.90
269 lbs. 594.08	476 lbs. 527.43	672 lbs. 406.11	878 lbs. 350.74
328 lbs. 596.67	522 lbs. 505.57	722 lbs. 383.80	918 lbs. 340.55
376 lbs. 563.53	573 lbs. 459.53	769 lbs. 365.22	977 lbs. 320.71

HEIFERS: Medium and Large 1

280 lbs. 541.63	477 lbs. 453.81	670 lbs. 363.84	874 lbs. 316.87
330 lbs. 550.47	523 lbs. 433.08	721 lbs. 354.82	919 lbs. 313.27
378 lbs. 501.99	573 lbs. 405.70	763 lbs. 338.20	973 lbs. 293.00
425 lbs. 475.31	620 lbs. 385.54	821 lbs. 323.85	

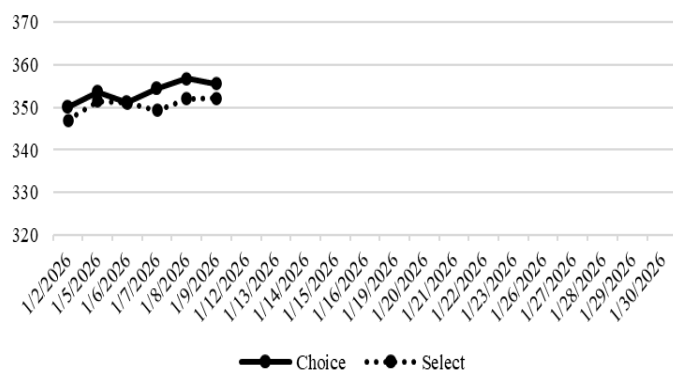
MISSOURI STEER (HEIFER) STOCKER FORMULA 1/12/2026

Monday's Missouri Stocker formula consists of **15,130 (12,515)** head with a weighted average weight of **558.13 (543.07)** lbs. and a price value of **458.75 (407.19)**, 10.91 higher (6.75 higher) than a week ago. This a rolling seven day calculated weighted value which combines all Feeder Steers reported by MDA/USDA Market News Service weighing from 400-649 lbs. in the Medium and Large 1 and Medium and Large 1-2 frame and muscle classifications, including all comment cattle except Brahman X. Heifer values are in parentheses.

NATIONAL BOXED BEEF CUTOUT VALUES

DATE	CHOICE	SELECT	TOTAL LOADS
1/5	353.70	351.50	118
1/6	351.25	351.08	166
1/7	354.28	349.28	139
1/8	356.79	352.06	166
1/9	355.63	352.17	118
5 Day Simple Average	354.48	351.14	

Boxed Beef Cuts January 2026



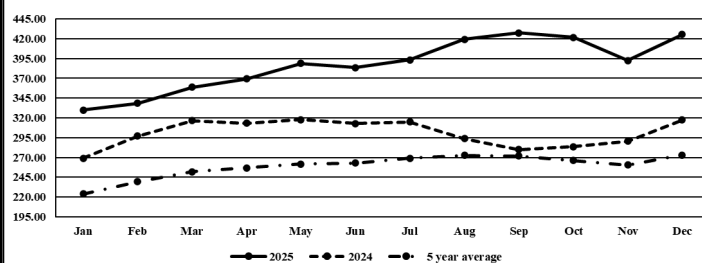
*Axis value ranges may be updated to reflect data points.

WEEKLY LIVESTOCK SLAUGHTER

	CATTLE	HOGS	SHEEP
Week to Date:	553,000	2,683,000	38,000
Last Week:	474,000	2,228,000	34,000
Last Year:	591,422	2,533,809	34,819

The Weekly Market Summary, as well as historical summaries, are available on our website <https://agmarketnews.mo.gov/summaries>
Market News Hotline: 1-573-522-9244
Check out the latest updates on our YouTube Channel: [MDA Market News](https://www.youtube.com/channel/UCM4M4M4M4M4M4M4M4M4M4M4)

Missouri Stocker Formula - Steers



*Graph is updated the first Monday of each month. Axis value ranges may be updated to reflect data points.

MISSOURI WEEKLY CATTLE AUCTION SUMMARY

Total Receipts: 73,253 Week Ago: 27,938 Year Ago: 15,375

Compared to last week, feeder steers and heifers sold 10.00-20.00 higher. All sales were back to business this week after the holiday break and the turning of another calendar year. Favorable prices along with favorable weather resulted in an extremely heavy supply of cattle finding their way to town. This was the largest total single week cattle volume reported in at least 25 years. Demand was good to very good as buyers eagerly tried to acquire cattle to fill orders. In many cases they were in just as much disbelief as consignors at prices being paid once the hammer fell. Cattle under 650 lbs. are back to setting new records and those over 650 lbs. are either setting records or very near it. The best demand is for stock suitable for grazing, even though grass arrival is still a while away, fears of short supplies have orders showing up earlier than ever. Stick out sales this week of drafts over 20 head included: 22 head of 410 lb. steers at Callaway Livestock Center which sold for 587.50. Green City Livestock Market sold 39 head of 500 lb. steers for 568.50. Kingsville Livestock Auction sold 32 head of 551 lb. steers for 514.00. Joplin Regional Stockyards sold 21 head of 610 lb. steers at 470.00. South Central Regional Stockyards sold 39 head of 697 lb. steers for 420.00. New Cambria Livestock Auction sold 40 head of 702 lbs. steers at 412.50 and 22 head of 753 lb. steers at 399.00. Unionville Livestock Market sold 63 head of 890 lb. steers at 379.00 and another 63 head weighing 905 lbs. at 375.00. On the heifer side prices are starting to be more complex as several drafts are now being bought with intentions of being turned into mommas. Drafts known to be intended for feed included 24 head of 501 lb. heifers sold at South Central Regional Stockyards which sold for 481.00. Windsor Livestock Auction sold 150 head of 730 lb. heifers for 365.50. Boxed beef cutout values closed higher for the week. Choice closed on Friday at 355.63, up 5.66 and select closed at 352.17, up 5.25 compared to last week. The choice/select spread remaining very narrow at 3.46 per cwt. Negotiated feedlot sales as of the 2:00 cutoff time on Friday afternoons report came in just under 52K head. Trade in the south was very limited. Live prices were reported 228.00-233.00 range once again this week prices gained strength as the week progressed. Dressed sales reported mostly at 365.00. The Missouri Stocker formula consists of 15,130 head with a weighted average weight of 558.13 lbs. and a price value of 458.75, 10.91 higher than last week and at an all-time record high. The steer/heifer spread is 51.56.

SOUTHWEST MISSOURI WEEKLY SUMMARY

(Joplin, Springfield, Exeter)

Receipts: 27,783 2 Weeks ago: 19,188 Year Ago: 5,857

Compared to last week feeders sold steady to 15.00 higher with some spots of mid to lighter weight calves as much as 40.00-50.00 higher. No recent trend on cows but markets were firm to higher than pre holiday sales.

FEEDER STEERS:

Medium and Large 1

300-400 lbs.	530.00-647.00
400-500 lbs.	495.00-600.00
500-600 lbs.	420.00-550.00
600-700 lbs.	380.00-453.00
700-800 lbs.	346.00-390.00
800-900 lbs.	336.00-357.00
900-1000 lbs.	317.00-343.00

FEEDER HEIFERS:

Medium and Large 1

300-400 lbs.	480.00-610.00
400-500 lbs.	437.50-540.00
500-600 lbs.	377.00-490.00
600-700 lbs.	336.00-400.00
700-800 lbs.	322.50-347.00
800-900 lbs.	305.00-328.00

FEEDER HOLSTEIN STEERS

Large 3

Scarce

SLAUGHTER COWS: Breaking

and Boning (70-85% lean) 140.00-168.00; high dressing 155.00-177.00; low dressing 125.00-157.50 Lean (85-90%) 120.00-158.00; high dressing 137.00-169.00; low dressing 94.00-137.50

SLAUGHTER BULLS: Yield

Grade 1-2 1160-2615 lbs. 172.50-204.00; high dressing 190.00-217.00; low dressing 151.00-183.00.

BRED COWS: Medium and Large 1, 1060-1515 lbs., 2nd-3rd stage, 2-4 yrs. 3400.00-3500.00; 2-8 yrs., 1st stage, 2800.00-2850.00; 2nd-3rd stage, 3200.00-3700.00 per head

BRED HEIFERS: Medium and Large 1, 2-4 yrs. 1140-1470 lbs 2nd-3rd stage 3100.00-3800.00 per head

COW CALF PAIRS: Medium and Large 1-2 under 150 lb. calves, 5-8 yrs., Open, 2800.00-3100.00 per pair;

Medium and Large 1-2 with 150-300 lb. calves, 2-8 yrs. Open 3000.00-3800.00 per pair; Over 8 yrs., Open, 3400.00-3800.00 per pair

SOUTH CENTRAL MISSOURI WEEKLY SUMMARY

(West Plains, Phillipsburg)

Receipts: 6,892 2 Weeks ago: 6,427 Year Ago: 819

Compared to the last sale four days ago, which was a wean/vac special, feeder steers and heifers sold steady to 6.00 higher. Steer and heifer calves sold steady to 8.00 higher. PeeWee calves under 450 lbs. sold 15.00-20.00 higher. Slaughter cows and bulls sold steady to 5.00 higher.

FEEDER STEERS:

Medium and Large 1

300-400 lbs.	552.50-685.00
400-500 lbs.	500.00-620.00
500-600 lbs.	440.00-525.00
600-700 lbs.	390.00-445.00
700-800 lbs.	352.50-397.50
800-850 lbs.	340.00
900-950 lbs.	319.00

FEEDER HEIFERS:

Medium and Large 1

300-400 lbs.	492.50-600.00
400-500 lbs.	440.00-520.00
500-600 lbs.	380.00-447.50
600-700 lbs.	330.00-384.00
700-800 lbs.	330.00-354.00

FEEDER HOLSTEIN STEERS:

Large 3

1000-1050 lbs. 170.00

SLAUGHTER COWS: Breaking

and Boning (70-85% lean) 140.00-163.00; high dressing 156.50-178.00; low dressing 132.00-153.00. Lean (85-90%) 127.00-146.00, high dressing 137.00-159.00 low dressing 112.00-129.50

SLAUGHTER BULLS: Yield

Grade 1-2 1215-2255 lbs. 170.00-195.00; high dressing 185.00-214.00; low dressing 132.50-173.00

BRED COWS: Medium and Large 1-2 1088-1620 lbs. 2-8 yrs. 1st stage, 2500.00-3200.00; 2nd-3rd stage 2450.00-3200.00; Over 8 years, 2nd-3rd stage 1325.00-1950.00

COW CALF PAIRS: Medium and Large 1-2 with under 150 lb calves, 2-8 yrs., Open, 3250.00 Medium and Large 1-2 with 150-300 lb. calves, 2-8 yrs., 1st stage, 3400.00-3500.00

WEST CENTRAL MISSOURI WEEKLY SUMMARY

(Kingsville, Windsor, Butler, Osceola)

Receipts: 13,119 2 Weeks ago: 1,702 Year ago: 3,195

Compared to last week, feeders sold 10.00-25.00 higher. Some sales compared back to mid-Dec. and sold sharply higher with some light weight calves seeing gains up to 50.00. Slaughter cows sold steady.

FEEDER STEERS:

Medium and Large 1

300-400 lbs.	515.00-609.00
400-500 lbs.	497.50-585.00
500-600 lbs.	435.00-539.00
600-700 lbs.	384.50-465.00
700-800 lbs.	353.00-410.00
800-900 lbs.	334.50-369.00
950-1000 lbs.	341.50

FEEDER HEIFERS:

Medium and Large 1

300-400 lbs.	455.00-590.00
400-500 lbs.	414.00-530.00
500-600 lbs.	380.00-480.00
600-700 lbs.	360.00-408.00
700-800 lbs.	327.50-370.00
850-900 lbs.	310.00-327.50
900-1000 lbs.	298.00-315.50

SLAUGHTER BULLS: Yield

Grade 1-2 1245-2155 lbs. 177.00-195.00; high dressing 194.00-205.00; low dressing 160.00-172.00

SLAUGHTER COWS: Breaking

and Boning (70-85% lean) 140.00-166.00; high dressing 158.00-171.00; low dressing 115.00-153.00; Lean (85-90%) 125.00-153.00, low dressing 75.00-122.00

BRED COWS: Medium and Large

1-2, 940-1325 lbs. 2-8 yrs., 2nd-3rd stage, 1750.00-2900.00

BRED HEIFERS: Scarce

NORTHEAST MISSOURI WEEKLY SUMMARY

(Bowling Green, Kingdom City, Palmyra)

Receipts: 8,380 3 Weeks ago: 4,962 Year ago: 952

Compared to the last sales three weeks ago, steer and heifer calves weighing 400-700 lbs sold mostly 20.00-40.00 higher, with yearling steers over 700 lbs trading mostly firm to 12.00 higher and heifers over 700 lbs selling steady to firm. Slaughter cows sold steady to firm.

FEEDER STEERS:

Medium and Large 1

300-400 lbs.	515.00-565.00
400-500 lbs.	475.00-550.00
500-600 lbs.	430.00-540.00
600-700 lbs.	379.00-459.00
700-800 lbs.	352.00-407.00
800-900 lbs.	337.00-356.00
120 hd. 915 lbs.	351.50

FEEDER HEIFERS:

Medium and Large 1

350-400 lbs.	452.50-530.00
400-500 lbs.	407.50-495.00
500-600 lbs.	388.00-440.00
600-700 lbs.	360.00-405.00
700-750 lbs.	340.00-366.50
800-850 lbs.	323.00-328.00

SLAUGHTER BULLS: Yield

Grade 1-2 1360-2510 lbs. 184.00-202.00; high dressing 205.00-216.50; low dressing 163.00-185.00

SLAUGHTER COWS: Breaking

and Boning, (70-85% lean) 150.00-163.00; high dressing 160.00-175.00; low dressing 135.00-153.00; Lean (85-90%) 138.00-151.00; low dressing 123.00-137.00

SLAUGHTER STEERS: Choice

2-3 220.50-228.50

SLAUGHTER HEIFERS: Choice

2-3 222.50-225.00

BRED COWS: Medium and

Large 1 2-8 yrs 1148-1451 lbs 2nd-3rd stage 3450.00-4325.00

BRED HEIFERS: Medium and

Large 1 1010-1341 lbs 2nd-3rd stage 3700.00-4775.00

NORTH CENTRAL MISSOURI WEEKLY SUMMARY

(Macon, Unionville, Green City, New Cambria)

Receipts: 9,330 2 Weeks ago: 621 Year ago: 4,552

Compared to the last sales three weeks ago, feeders sold 10.00-40.00 higher. Slaughter cows mixed from 4.00 lower to 4.00 higher.

*Some sale barns on a bi-weekly schedule and may not have a sale each week.

FEEDER STEERS:

Medium and Large 1

400-500 lbs.	500.00-615.00
500-600 lbs.	430.00-543.00
600-700 lbs.	390.00-469.00
700-800 lbs.	359.00-412.50
800-900 lbs.	344.50-379.00
63 hd. 905 lbs.	375.00

FEEDER HEIFERS:

Medium and Large 1

300-400 lbs.	462.00-500.00
400-500 lbs.	429.00-487.00
500-600 lbs.	373.00-463.00
600-700 lbs.	343.00-410.00
700-800 lbs.	338.50-380.00

SLAUGHTER BULLS: Yield

Grade 1-2 1350-2480 lbs. 182.00-209.00; high dressing 201.00-208.00

SLAUGHTER COWS: Breaking

and Boning (70-85% lean) 144.00-166.00; high dressing 160.00-167.00; low dressing 140.00-149.00. Lean (85-90%) 134.00-152.00, low dressing 122.50-138.00

BRED COWS: Medium and

Large 1-2, 1100-1440 lbs., 5-8 yrs, 2nd stage 3350.00-3500.00; 3rd stage 3700.00-3825.00; Over 5 yrs., 3rd stage 2800.00-3425.00

BRED HEIFERS: Medium and

Large 1, 1200-1210 lbs., Under 2 yrs., 3rd stage 4475.00-4675.00

SOUTHEAST MISSOURI WEEKLY SUMMARY

(Jackson and Farmington)

Receipts: 2,338 3 Weeks ago: 1,123 Year ago: 0
Compared to the last sales in mid-December, feeders sold 20.00-60.00 higher. Slaughter cows sold steady to 2.00 higher. The slaughter bulls sold steady.

FEEDER STEERS:

Medium and Large 1

300-400 lbs. 453.00-615.00
400-500 lbs. 432.00-580.00
500-600 lbs. 392.00-485.00
600-700 lbs. 362.00-430.00
700-800 lbs. 335.00-395.00
800-900 lbs. 302.00-332.00

FEEDER HEIFERS:

Medium and Large 1

300-400 lbs. 420.00-530.00
400-500 lbs. 400.00-485.00
500-600 lbs. 347.00-455.00
600-700 lbs. 325.00-375.00
700-800 lbs. 307.00-347.00
800-900 lbs. 267.00-322.00

SLAUGHTER BULLS: Yield
Grade 1-2 1160-2345 lbs. 155.00-175.00, high dressing 152.00-199.00, low dressing 145.00-173.00

SLAUGHTER COWS: Breaking and Boning (75-85% lean) 137.50-155.00; high dressing 154.00-170.50; Lean (85-90% lean) 80.00-125.00; high dressing 127.00-155.00

BRED COWS: Medium and Large 2 1085-1380 lbs 2-8 yrs 2nd-3rd stage 2000.00-3200.00 per head

COW & CALF PAIRS: Scarce

EAST CENTRAL MISSOURI WEEKLY SUMMARY

(Cuba, Vienna)

Receipts: 3,200 3 Weeks Ago: 1,261 Year ago: 0

Compared to last sales in mid-December, feeders sold 7.00-40.00 higher. Slaughter cows sold steady.

FEEDER STEERS:

Medium and Large 1

300-400 lbs. 530.00-584.00
400-500 lbs. 465.00-566.00
500-600 lbs. 410.00-555.00
600-700 lbs. 380.00-453.00
700-800 lbs. 340.00-401.00
800-900 lbs. 330.00-350.50

FEEDER HEIFERS:

Medium and Large 1

300-400 lbs. 470.00-535.00
400-500 lbs. 405.00-490.00
500-600 lbs. 375.00-473.00
600-700 lbs. 342.00-395.00
700-800 lbs. 322.00-347.50

SLAUGHTER BULLS: Yield
Grade 1-2 1475-2520 lbs 184.00-202.00; high dressing 161.50-172.50; low dressing 136.00-148.00

SLAUGHTER COWS: Breaking and Boning, (70-85% lean) 148.00-163.00, high dressing 161.50-172.50, low dressing 136.00-148.00; Lean (85-90%) 133.00-147.00, low dressing 119.00-133.00

BRED COWS: Medium and Large 1-2, 1125-1415 lbs., 2-8 yrs., 2nd-3rd stage, 2925.00-3700.00; Over 8 year olds, 2nd stage 2725.00-2750.00

BRED HEIFERS: Scarce

NORTHWEST MISSOURI WEEKLY SUMMARY

(Tina)

Receipts: 2,211 2 weeks ago: 1,200 Year ago: 0

Compared to the last sale two weeks ago, feeder steers and heifers sold mostly 20.00-30.00 higher on very good demand. Slaughter cows and bulls traded mostly steady.

FEEDER STEERS:

Medium and Large 1

400-500 lbs. 502.50-555.00
500-600 lbs. 447.00-508.00
600-700 lbs. 392.00-459.50
700-800 lbs. 364.00-389.50
800-850 lbs. 361.50
950-1000 lbs. 325.25-328.00

FEEDER HEIFERS:

Medium and Large 1

400-500 lbs. 443.00-475.00
500-600 lbs. 420.00-457.00
600-700 lbs. 353.50-386.50
700-800 lbs. 334.00-356.75
800-850 lbs. 326.50

SLAUGHTER BULLS: Yield
Grade 1-2 1705-2270 lbs. 183.00-191.00; high dressing 200.00-201.50

SLAUGHTER COWS: Breaking and Boning, (70-85% lean) 150.00-167.50, high dressing 167.00-175.00; Lean (85-90%) 130.50-139.00, high dressing 140.00-156.00, low dressing 115.00-128.00

BRED COWS: Scarce

BRED HEIFERS: Scarce

AFTERNOON NATIONAL SLAUGHTER CATTLE REVIEW

Thus far Friday negotiated cash trade was light on good demand in Nebraska and the Western Cornbelt. Compared to Thursday in Nebraska and the Western Cornbelt live and dressed purchases traded mostly steady from 232.00-233.00, mostly at 232.00 and at 365.00. Trade was limited on moderate demand in Kansas. However, not enough purchases for an adequate market test. The last established market test in Kansas was last week from 229.00-232.00, mostly 232.00.

Negotiated Cash Sales:

Confirmed:	15,519	Week Ago:	15,417	Year Ago:	10,765
Week to date:	51,489	Week Ago:	25,712	Year Ago:	65,105

<u>Live Basis</u>	<u>Steers</u>	<u>Heifers</u>
Over 80% Choice	232.00-233.00 avg 232.09	232.00-233.00 avg 232.20
65-80% Choice	-	-
35-65% Choice	-	-
0-35% Choice	-	-
Total All Grades	232.00-233.00 avg 232.09	232.00-233.00 avg 232.20
<u>Dressed Basis</u>		
Over 80% Choice	365.00-365.00 avg 365.00	365.00-365.00 avg 365.00
65-80% Choice	-	-
35-65% Choice	-	-
0-35% Choice	-	-
Total All Grades	365.00-365.00 avg 365.00	365.00-365.00 avg 365.00

<u>All Beef Type Steers/Heifers</u>	<u>Head</u>	<u>Avg Wt</u>	<u>Price Range</u>	<u>Wtd Avg</u>
Live FOB	11,300	1,498.3	230.00-236.00	232.06
Live Del	648	1,496.3	232.00-238.00	234.78
Dressed Del	3,463	1,021.6	365.00-365.00	365.00
Dressed FOB	-	-	-	-

WEEKLY COMMODITY FUTURES TRENDS

Compared to last week, Live Cattle nearby 0.60 to 2.28 lower, Lean Hogs 1.20 to 2.67 higher, Feeder Cattle 0.12 to 4.62 higher.

Daily Futures Closes

	Mon.	Tues.	Wed.	Thu.	Fri.
Cattle					
Feb	235.87	236.62	234.52	235.27	233.72
Apr	236.80	237.37	235.17	236.22	234.67
Jun	231.42	232.07	230.02	231.27	229.75
Aug	228.22	228.95	227.00	228.47	227.12
Oct	227.37	228.17	226.32	227.95	226.82
Lean Hogs					
Feb	86.15	85.67	84.80	85.87	85.30
Apr	91.50	91.57	90.27	91.92	91.77
May	95.57	95.62	94.60	95.95	95.85
Jun	104.32	104.27	103.52	104.65	104.72
Jul	105.15	105.17	104.57	105.57	105.60
Fdr Cattle					
Jan	358.97	362.17	359.60	362.47	360.72
Mar	355.57	359.02	355.50	357.72	354.70
Apr	354.90	358.12	354.67	356.62	353.05
May	352.80	355.97	352.67	354.35	350.32
Aug	352.40	355.75	352.75	354.15	349.87
Milk					
Jan	15.03	15.09	15.08	14.89	14.86
Feb	15.00	15.24	15.42	15.08	15.13
Mar	15.16	15.39	15.58	15.28	15.35

WEEKLY COMMODITY GRAIN FUTURES TRENDS

Compared to last week, Soybeans 0.13 to 0.19 higher, Wheat 0.08 to 0.11 higher, Corn 0.05 to 0.08 higher, KC Wheat 0.14 to 0.15 higher, Soybean Meal 5.80 to 9.00 higher.

Daily Grain Futures Closes

	Mon.	Tues.	Wed.	Thu.	Fri.
Soybeans					
Jan	1047 1/4	1042	1052 3/4	1047	1048 1/2
Mar	1062	1056 1/4	1067	1061 1/4	1062 1/4
May	1074 1/4	1068	1078 3/4	1073 1/4	1074 1/2
Jul	1086 3/4	1080 1/4	1090 1/4	1086 1/4	1087 3/4
Aug	1084 1/2	1077 3/4	1086 1/2	1083	1084
Wheat					
Mar	512 1/2	510 1/2	518	518	517 1/4
May	523 1/2	521 1/4	528	529	528 3/4
Jul	535 1/2	532 3/4	539 1/4	541	540 3/4
Sep	549 1/2	546 3/4	553 1/4	554 3/4	554 1/4
Dec	568 1/4	565 3/4	571 3/4	573 1/4	572 3/4
Corn					
Mar	444 1/2	444	446 3/4	446	445 3/4
May	452	451 1/4	454	454	453 3/4
Jul	458 1/4	457	459 3/4	460 1/2	460 1/4
Sep	452	450 1/2	452 1/2	453 3/4	453 1/4
Dec	463 1/4	461 3/4	463 3/4	464 1/2	464
KC Wheat					
Mar	520 3/4	521 1/2	531 1/2	530 1/4	530 1/4
May	533 1/4	533 1/4	543 1/4	543	543
Jul	546 1/2	546	556	556 1/2	556 1/2
Sep	561 1/2	560 3/4	571	571 1/2	571
Dec	581 1/4	580 1/4	590 3/4	591 1/4	590 3/4
SB Meal					
Jan	294.90	294.70	301.50	300.40	300.00
Mar	299.90	299.50	305.40	303.60	303.70
May	304.00	303.80	309.40	307.00	307.20
Jul	309.10	308.60	313.90	311.60	312.00
Aug	310.90	310.20	315.30	312.90	313.50

MISSOURI GRAIN WEEKLY TRENDS

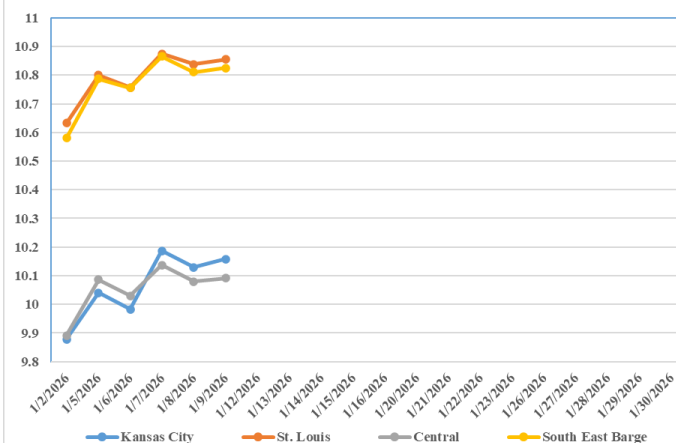
Compared to last week, Soybeans 0.19 to 0.29 higher, Wheat 0.05 to 0.11 higher, Corn 0.07 to 0.12 higher, Sorghum 0.08 higher.

Area	#1 Soybeans	#2 Soft Wheat	#2 Corn	#2 Grain Sorghum
Kansas City				
Friday**	9.73-10.15	4.69	4.40	3.52
Monday	9.90-10.32	4.75	4.47	3.59
Tuesday	9.84-10.26	4.73	4.47	3.59
Wednesday	10.07-10.42	4.81	4.48	3.61
Thursday	10.01-10.36	4.81	4.48	3.61
Friday	10.02-10.42	4.80	4.47	3.60
St. Louis				
Friday**	10.62-10.63	4.96-5.07	4.54	4.27
Monday	10.79-10.81	5.02-5.13	4.61-4.62	4.34
Tuesday	10.75-10.76	5.00-5.11	4.61-4.62	4.34
Wednesday	10.86-10.89	5.08-5.19	4.64-4.65	4.36
Thursday	10.83-10.84	5.08-5.19	4.64-4.65	4.36
Friday	10.85	5.07-5.12	4.64-4.66	4.35
Central				
Friday**	9.85-9.95	4.56	4.02-4.07	—
Monday	10.02-10.12	4.62	4.09-4.14	—
Tuesday	9.96-10.06	4.60	4.09-4.14	—
Wednesday	10.07-10.17	4.68	4.11-4.16	—
Thursday	10.01-10.11	4.68	4.11-4.16	—
Friday	10.02-10.12	4.67	4.10-4.15	—
S.E. MO				
Friday**	10.45-10.64	—	4.52-4.60	—
Monday	10.71-10.82	—	4.57-4.67	—
Tuesday	10.71-10.78	—	4.57-4.68	—
Wednesday	10.83-10.89	—	4.59-4.72	—
Thursday	10.78-10.83	—	4.61-4.72	—
Friday	10.78-10.84	—	4.58-4.71	—

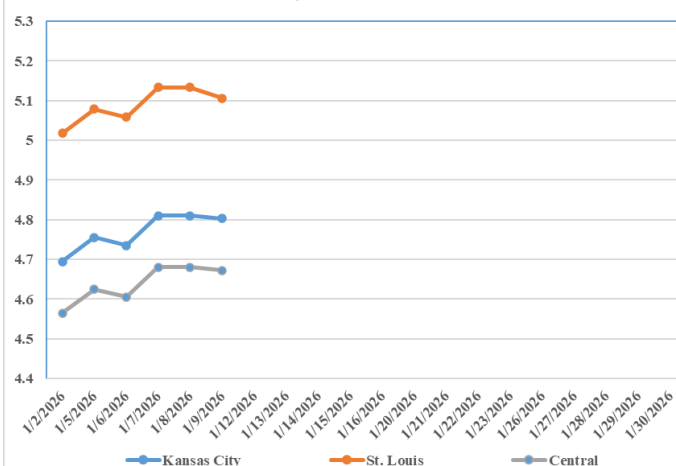
(PRICES PER BUSHEL) *NEW CROP **PREVIOUS WEEK'S PRICES
*Bids calculated using Kansas City, St. Louis, and St. Joseph bids

MONTHLY GRAIN CROP

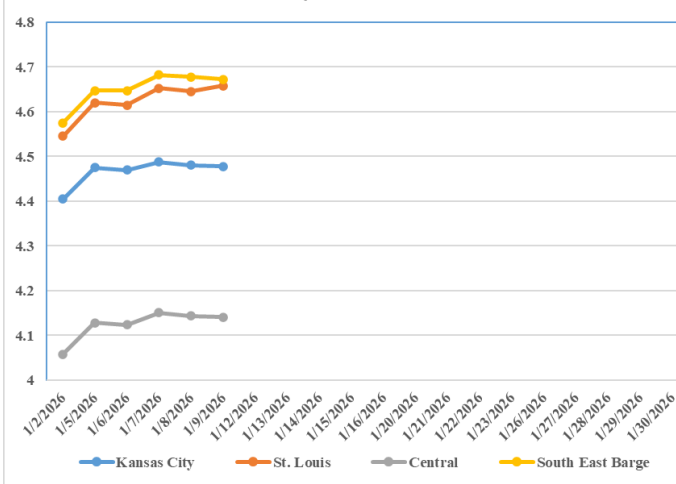
January 2026 Soybean Bids



January 2026 Wheat Bids



January 2026 Corn Bids



*Axis value ranges may be updated to reflect data points.
Only dates in which markets are trading and only current cash bids are represented.

WHOLESALE FEEDSTUFFS PRICES (DOLLARS PER TON-BULK BASIS)

Area	Cottonseed Meal 41%	Soybean Meal 46.5-48%	Corn Gluten Pellets 21%	Wheat Middlings
Kansas City	N/A	298.60	216.00	230.00
St. Louis	N/A	N/A	202.00	235.00

DAIRY PRODUCTS

November 2025 Highlights

Total cheese output (excluding cottage cheese) was 1.22 billion pounds, 5.9 percent above November 2024 but 3.4 percent below October 2025.

Italian type cheese production totaled 526 million pounds, 6.8 percent above November 2024 but 2.7 percent below October 2025.

American type cheese production totaled 474 million pounds, 5.6 percent above November 2024 but 3.7 percent below October 2025.

Butter production was 180 million pounds, 2.2 percent above November 2024 but 3.4 percent below October 2025.

Dry milk products (comparisons in percentage with November 2024) Nonfat dry milk, human - 108 million pounds, down 9.8 percent. Skim milk powder - 40.5 million pounds, down 9.9 percent.

Whey products (comparisons in percentage with November 2024) Dry whey, total - 64.8 million pounds, up slightly. Lactose, human and animal - 87.2 million pounds, up 2.7 percent. Whey protein concentrate, total - 41.7 million pounds, up 4.9 percent.

Frozen products (comparisons in percentage with November 2024) Ice cream, regular (hard) - 49.8 million gallons, down 2.0 percent. Ice cream, lowfat (total) - 24.4 million gallons, down 5.2 percent. Sherbet (hard) - 1.45 million gallons, up 10.0 percent. Frozen yogurt (total) - 2.42 million gallons, down 9.5 percent

MISSOURI WEEKLY HAY SUMMARY 1/07/2026

The year has started off with above average temperatures and very little moisture. Most of the state is currently highlighted on the drought monitor. Most livestock owners are enjoying not dealing with mud or having problems getting trucks or tractors started, but in the back of everyone's mind is the lack of moisture and how much some is needed before the new growing season. Mild weather has done little to reduce the overall hay supply as only normal feeding is taking place. Hay movement has been light to moderate. Prices seem to have stabilized and are mostly steady. The Missouri Department of Agriculture has a hay directory at <https://apps.mda.mo.gov/haydirectory> or visit the University of Missouri Extension feed stuff finder at <https://feedstufffinder.org>

Alfalfa - Supreme 250.00-300.00, small square 10.00-15.00 per bale
Alfalfa - Premium 175.00-225.00
Alfalfa - Good 150.00-175.00, small square 6.00-10.00 per bale
Alfalfa - Fair 125.00-150.00
Mixed Grass—Premium 150.00-200.00
Mixed grass - Good/Premium 100.00-150.00
Mixed grass-Fair/Good 75.00-125.00, small square 3.00-7.00 per bale
Mixed grass - Fair 20.00-45.00 per large round bale
Wheat straw - 4.00-7.00 per small square bale

Please Note: The above volumes (tonnage, acres, and bales) listed are for confirmed trades only, it does not include estimated volume (tonnage) for bids or offers to the trade. List your hay for sale at: [Hay Listing Online Form](#). Explanation of Hay Quality Guidelines: [Hay Quality Designation Guidelines](#). Glossary of Terms: [Livestock, Poultry, & Grain Hay Terms](#)

MISSOURI WEEKLY SHEEP/GOAT AUCTION SUMMARY

Receipts: 1,803 Week Ago: 5,070 Last Year: 2,383

SHEEP: Feeder Lambs: Small and Medium 1-2 hair 30/50 lbs 355.00-435.00. Slaughter Lambs: Choice and Prime 1-3 hair 40-50 lbs 400.00-412.50; 50-60 lbs 357.50-395.00; 60-70 lbs 362.50-400.00; 70-80 lbs 335.00-360.00; 80-90 lbs 270.00-315.00; 100-110 lbs 260.00-257.50. Slaughter Ewes: Good 2-3 hair 75-140 lbs 137.50-155.00. Utility and Good 1-3 90-140 lbs 115.00-135.00. Bucks 1-2 hair 110-145 lbs 132.50-175.00; 155-185 lbs 140.00-145.00; 200-225 lbs 130.00-132.50. Replacement Ewes: Small and Medium 1-2 hair 1-2 yrs 70-80 lbs Exp 192.50-197.50; 2-4 yrs 75-90 lbs exp 162.50-167.50; 4-6 yrs 100-140 lbs exp 157.50-165.00.

GOATS: Feeder Kids: Selection 1 30-50 lbs 367.50-460.00. Selection 2 35-50 lbs 305.00-390.00. Slaughter Kids: Selection 1 50-60 lbs 350.00-392.50; 60-70 lbs 355.00-400.00. Selection 2 50-60 lbs 322.50-342.50; 60-70 lbs 335.00-352.50. Nannies Selection 1-2 75-100 lbs 170.00-220.00. Billies Selection 1-2 200-135 lbs 215.00-327.50. Wether kids Selection 1 50-85 lbs 320.00-365.00.

Explanatory Notes: Stage - Represents estimated lambing/kidding period (Open, Exp=exposed, Bred, Fall = Sep-Nov, Win = Dec-Feb, Spr = Mar-May, Sum=Jun-Aug; w/s = woolled and shorn; /hd= per head; /fam=per family
All price CWT unless otherwise noted.

MISSOURI DROUGHT MONITOR

Date	None	D0	D1	D2	D3	D4
1/6/26	4.72	37.75	45.93	11.61	0.0	0.0
12/30/25	5.70	50.20	38.20	5.89	0.0	0.0
1/7/25	69.71	18.54	11.75	0.0	0.0	0.0

Reflects percentage of Missouri impacted by drought. D0 Abnormally Dry; D1 Moderate Drought; D2 Severe Drought; D3 Extreme Drought; D4 Exceptional Drought

NATIONAL DIRECT DELIVERED FEEDER PIG REPORT

1/09/26 Receipts: 131,069 Week ago: 98,796 Year Ago: 114,481

Early weaned pigs are mostly 6.00 higher and feeder pigs are mostly 8.00 higher.

Cash: 71,400 head 65.00-95.00, weighted average 83.33

Formula: 40,619 head 50.10-84.20, weighted average 68.02

Feeder pigs 40 pounds basis: Cash 19,050 head 90.00-115.00, weighted average 103.92

NATIONAL DAILY DIRECT PRIOR DAY HOG REPORTS 1/09/26

BARROWS AND GILTS (Carcass Basis): 947 head

Base Carcass Price 68.00-73.00, weighted average 69.55

SOWS (Live Basis): 6,627 head

300-500 lbs. 30.00-73.00

Over 500 lbs. 44.45-73.00

MISSOURI WEEKLY DIRECT SLAUGHTER CATTLE REPORT 1/09/26

Weekly Receipts: 360 Week ago: No sales Year ago: 340

Trading as of Friday morning, Flat dressed sales at 360.00, Grid dressed sales late last Friday at 366.00 with bids steady this week.

LIVE STEERS & HEIFERS:

No sales reported.

DRESSED STEERS & HEIFERS:

4 loads Thurs. at 360.00 Flat.

GRADE AND EIGHT (Grid):

4 loads late last Friday after 3:00 pm 366.00

Click here for the current [National Crop Progress](#)

Click here for the current [Missouri Crop Progress](#)

The current hay directory can be found at: [Hay Directory](#).