

Weekly Market Summary

Published by:
Missouri Department of Agriculture
Ag Business Development Division
Market News Program



Chris Chinn, Director
 Jill Wood, Division Director
 Tony Hancock, Editor
<http://www.ams.usda.gov/marketnews.htm>

Michael Kehoe, Governor

Volume XLVI, Number 8 ♦ P.O. Box 630, Jefferson City, MO 65102 ♦ (573) 751-4211 ♦ Mon, Feb 23, 2026

MISSOURI WEEKLY FEEDER CATTLE WEIGHTED AVERAGE REPORT

Feeder Cattle Receipts: 39,194 Week ago: 46,293 Year ago: 4,520
 Steers and Heifers Medium and Large 1—Weighted average weights and prices

STEERS: Medium and Large 1

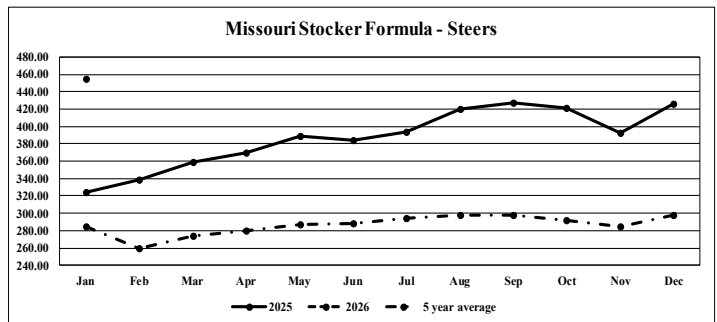
287 lbs. 723.85	474 lbs. 563.10	672 lbs. 426.87	879 lbs. 348.04
326 lbs. 642.28	524 lbs. 527.74	722 lbs. 403.78	921 lbs. 340.94
375 lbs. 632.29	575 lbs. 481.09	778 lbs. 377.94	956 lbs. 324.51
425 lbs. 596.89	623 lbs. 458.09	827 lbs. 364.95	1011 lbs. 309.00

HEIFERS: Medium and Large 1

272 lbs. 661.93	472 lbs. 484.20	674 lbs. 377.44
320 lbs. 587.14	525 lbs. 460.39	723 lbs. 361.87
375 lbs. 551.04	569 lbs. 428.97	854 lbs. 324.17
424 lbs. 508.91	626 lbs. 406.66	966 lbs. 300.00

MISSOURI STEER (HEIFER) STOCKER FORMULA 2/23/2026

Monday's Missouri Stocker formula consists of **8,019 (7,517)** head with a weighted average weight of **553.00 (541.22)** lbs. and a price value of **488.66 (432.86)**, 5.69 higher (0.20 higher) than a week ago. This is a rolling seven day calculated weighted value which combines all Feeder Steers reported by MDA/USDA Market News Service weighing from 400-649 lbs. in the Medium and Large 1 and Medium and Large 1-2 frame and muscle classifications, including all comment cattle except Brahman X. Heifer values are in parentheses.



*Graph is updated the first Monday of each month. Axis value ranges may be updated to reflect data points.

NATIONAL BOXED BEEF CUTOUT VALUES

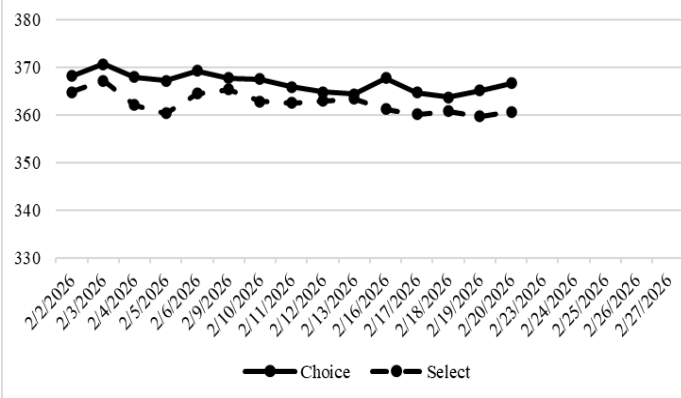
DATE	CHOICE	SELECT	TOTAL LOADS
2/16	367.77	361.23	50
2/17	364.76	360.22	119
2/18	363.80	360.83	111
2/19	365.17	359.79	97
2/20	366.70	360.74	106
5 Day Simple Average	365.64	360.56	

MISSOURI WEEKLY CATTLE AUCTION SUMMARY

Total Receipts: 44,563 Week Ago: 50,759 Year Ago: 5,411

Compared to last week, feeders sold 5.00-10.00 higher. There were some instances of early week sales not seeing the extreme highs from the previous week and being reported as lower but overall, the market continued to climb higher, although the pace has slowed. Prices are back to record levels. The supply of feeders was moderate, condition seems to be the selling point currently as buyers still try to gather some grazing stock before grass. Although there are still some high-quality cattle showing up to town, as a whole most of those have already been marketed and quality isn't as impressive as it was just a few weeks ago. The monthly Cattle on Feed Report was released on Friday. No major shocks as the record continues to play the same tune, numbers are tight and not getting better. All three categories were very close to pre-report estimates and the report will lightly come and go without any fanfare. On Feed numbers reported at 98.2 percent, Placements at 95.3 percent and Marketings at 87.0 percent of year ago levels. A few stick out sales this week of drafts over 20 head included: 63 head of 461 lb. steers at Joplin Regional Stockyards that brought 615.00. Green City Livestock Market sold a package of 503 lb. steers for 571.00 and a full load of 785 lb. steers for 396.50. Windsor Livestock Auction sold 30 head of 564 lb. fancy steers for 583.00 and another 26 head of fancy 608 lb. steers for 518.00, along with a full load of 701 lb. steers for 425.00. MO-Kan Livestock Market sold 38 head of 655 lb. steers for 452.50. Kingsville Livestock Auction sold a load of 825 lb. steers for 385.00 and another load of 877 lb. steers for 360.00. New Cambria Livestock Auction sold a load of 938 lb. steers for 350.75. Kingsville Livestock Auction sold 24 head of 525 lb. heifers 509.00. New Cambria Livestock Auction sold a load of 708 lb. heifers headed to feed for 378.00. Boxed beef cutout values closed mixed for the week. Choice closed on Friday at 366.70, up 2.236 and select closed at 360.74, down 2.68 compared to last week. The choice/select spread at 5.96 per cwt. Negotiated feedlot sales as of the 2:00 cutoff time on Friday afternoons report was limited and came in just under 28k head. There was likely once again volume that occurred later Friday after the report cut off time. The sales that were reported were mostly higher and mostly in the north, live prices were reported at mostly 247.00, with unofficial talk of 249.00 occurring in the south. Dressed sales reported 388.00. Missouri Stocker formula consists of 8019 head with a weighted average weight of 553.00 lbs. and a price value of 488.66, 5.69 higher than last week and establishing a new record high once again. The steer/heifer spread is 55.80.

Boxed Beef Cuts February 2026



*Axis value ranges may be updated to reflect data points.

WEEKLY LIVESTOCK SLAUGHTER

	CATTLE	HOGS	SHEEP
Week to Date:	516,000	2,516,000	37,000
Last Week:	541,000	2,497,000	39,000
Last Year:	564,737	2,501,369	34,323

The Weekly Market Summary, as well as historical summaries, are available on our website <https://agmarketnews.mo.gov/summaries>
 Market News Hotline: 1-573-522-9244
 Check out the latest updates on our YouTube Channel: [MDA Market News](https://www.youtube.com/channel/UC...)

SOUTHWEST MISSOURI WEEKLY SUMMARY

(Joplin, Springfield, Exeter)

Receipts: 20,072 Week ago: 18,018 Year Ago: 3,350

Compared to last week, feeders sold steady to 15.00 higher, although there were some spots of uneven prices reported early week, mostly on heifers. Slaughter cows and bulls sold 3.00-10.00 higher.

FEEDER STEERS:
Medium and Large 1

Table with 2 columns: Weight (300-400 lbs to 900-1000 lbs) and Price (605.00-720.00 to 307.00-349.00)

FEEDER HEIFERS:
Medium and Large 1

Table with 2 columns: Weight (300-400 lbs to 800-900 lbs) and Price (520.00-620.00 to 324.00-336.00)

FEEDER HOLSTEIN STEERS
Large 3

Table with 2 columns: Weight (550-600 lbs to 1000-1100 lbs) and Price (scarce to 1000-1100 lbs)

SLAUGHTER COWS: Breaking and Boning (70-85% lean) 140.00-177.50, high dressing 165.00-185.00, low dressing 127.50-165.00; Lean (85-90%) 125.00-167.50; high dressing 156.00-175.00; low dressing 80.00-147.50

SLAUGHTER BULLS: Yield Grade 1-2 1140-2500 lbs. 181.00-208.00; high dressing 206.00-234.00; low dressing 170.00-182.50

BRED COWS: Medium and Large 1, 825-1580 lbs., 2-8 yrs., 1st stage, 3200.00-4000.00, 2nd-3rd stage, 3550.00-4600.00, Over 8 years old, 2nd-3rd stage, 3600.00-3900.00

COW CALF PAIRS: Medium and Large 1 with 150-300 lb. calves, Open, 2-8 yrs., 4200.00-4600.00, Over 8 yrs., 4200.00; with over 300 lb. calves, Open, 2-8 yrs. 5000.00-5400.00, 2-8 yrs., 1st-2nd stage, 4850.00-5200.00, Over 8 yrs., 1st stage, 5050.00

Medium and Large 1-2, 906-1605 lbs., 2-8 yrs., 1st stage, 2400.00-3500.00, 2nd-3rd stage, 2600.00-4425.00; 5-8 yrs. 2nd-3rd stage, 2500.00-3500.00; Over 5 yrs., 1st stage, 2200.00-2800.00, 2nd-3rd stage, 2100.00-3600.00

BRED HEIFERS: Medium and Large 1, 1023-1370 lbs., 2nd-3rd stage, Under 2 yrs., 4400.00-5300.00; 2-4 yrs., 3500.00-5600.00

SOUTH CENTRAL MISSOURI WEEKLY SUMMARY

(West Plains, Phillipsburg)

Receipts: 3,866 Week ago: 5,434 Year Ago: 0

Compared to last week, feeders sold steady to 10.00 higher, with some heifers late week 15.00 higher. Slaughter cows sold steady to 4.00 higher.

FEEDER STEERS:
Medium and Large 1

Table with 2 columns: Weight (300-400 lbs to 800-850 lbs) and Price (592.50-675.00 to 354.00-373.00)

FEEDER HEIFERS:
Medium and Large 1

Table with 2 columns: Weight (300-400 lbs to 700-800 lbs) and Price (535.00-625.00 to 342.50-367.50)

FEEDER HOLSTEIN STEERS:
Large 3

Scarce

SLAUGHTER COWS: Breaking and Boning (70-85% lean) 150.00-174.50; high dressing 172.00-189.00; low dressing 140.00-158.00. Lean (85-90%) 130.00-154.00, high dressing 157.00-170.00, low dressing 115.00-132.50

SLAUGHTER BULLS: Yield Grade 1-2 1240-2170 lbs. 180.00-200.00; high dressing 199.00-215.00; low dressing 157.00-176.00

BRED COWS: Medium and Large 1-2, 1035-1420 lbs., 2-8 yrs., 1st stage, 2450.00-3100.00, 2nd-3rd stage, 2400.00-3650.00

COW CALF PAIRS: Medium and Large 1-2, with 150-300 lb calves, 1165-1420 lbs., 2-8 yrs., Open, 3700.00-4650.00

WEST CENTRAL MISSOURI WEEKLY SUMMARY

(Kingsville, Windsor, Butler, Osceola)

Receipts: 6,605 Week ago: 10,241 Year ago: 0

Compared to last week, feeders sold firm to 15.00 higher. Slaughter cows sold steady to 3.00 higher.

FEEDER STEERS:
Medium and Large 1

Table with 2 columns: Weight (300-400 lbs to 800-900 lbs) and Price (580.00-650.00 to 345.00-385.00)

FEEDER HEIFERS:
Medium and Large 1

Table with 2 columns: Weight (300-400 lbs to 800-850 lbs) and Price (525.00-612.50 to 324.00-334.50)

SLAUGHTER BULLS: Yield Grade 1-2 1195-2080 lbs. 183.00-205.00, high dressing 208.00-226.00, low dressing 163.00-189.00

SLAUGHTER COWS: Breaking and Boning (70-85% lean) 155.00-182.00, high dressing 174.00-192.50, low dressing 137.00-172.00; Lean (85-90%) 134.00-157.00, low dressing 100.00-142.50

BRED COWS: Medium and Large 1-2, 1150-1565 lbs., 2nd-3rd stage, 2-8 yrs., 3300.00-4200.00, Over 5 yrs., 2500.00-3275.00

BRED HEIFERS: Medium and Large 1-2, 750-802 lbs., Under 2 yrs., 2nd-3rd stage, 2000.00-2400.00

NORTHEAST MISSOURI WEEKLY SUMMARY

(Bowling Green, Kingdom City, Palmyra)

Receipts: 4,665 Week ago: 7,628 Year ago: 1,505

Compared to last week, feeder steers sold firm to 15.00 higher. Feeder heifers under 550 lbs. sold 10.00-20.00 lower, all other weights sold steady to 5.00 higher. Slaughter cows sold steady to firm.

FEEDER STEERS:
Medium and Large 1

Table with 2 columns: Weight (300-400 lbs to 900-950 lbs) and Price (620.00-660.00 to 338.50)

FEEDER HEIFERS:
Medium and Large 1

Table with 2 columns: Weight (400-500 lbs to 700-800 lbs) and Price (464.00-512.50 to 333.00-370.75)

SLAUGHTER BULLS: Yield Grade 1-2 1415-2525 lbs. 185.00-205.00; high dressing 207.50-225.00; low dressing 174.00-183.00

SLAUGHTER COWS: Breaking and Boning, (70-85% lean) 160.00-175.00; high dressing 174.00-191.00; low dressing 145.00-165.00. Lean (85-90%) 145.00-164.00; high dressing 162.00-171.00; low dressing 128.00-165.00

SLAUGHTER STEERS: Choice 2-3 235.00-237.50

SLAUGHTER HEIFERS: Choice 2-3 235.50-240.00

BRED COWS: Medium and Large 1-2, 1212-1333 lbs., 2-8 yrs. 2nd-3rd stage, 3850.00-4600.00, Over 5 yrs., 2nd stage, 4000.00-4200.00

HEIFER PAIRS: Medium and Large 1-2 with less than 150 lb. calves, Under 2 yrs., Open, 5800.00-6025.00

NORTH CENTRAL MISSOURI WEEKLY SUMMARY

(Macon, Unionville, Green City, New Cambria)

Receipts: 5,148 Week ago: 2,858 Year ago: 150

Compared to the last auctions two and three weeks ago feeders sold sharply higher. Slaughter cows sold steady to firm.

*Some sale barns on a bi-weekly schedule and may not have a sale each week.

FEEDER STEERS:
Medium and Large 1

Table with 2 columns: Weight (400-500 lbs to 900-950 lbs) and Price (545.50-625.00 to 350.50-350.75)

FEEDER HEIFERS:
Medium and Large 1

Table with 2 columns: Weight (350-400 lbs to 800-850 lbs) and Price (522.50-551.00 to 324.50)

SLAUGHTER BULLS: Yield Grade 1-2 1750-2175 lbs. 188.00-203.00

SLAUGHTER COWS: Breaking and Boning (70-85% lean) 149.00-175.00, high dressing 165.00-185.00; Lean (85-90%) 145.00-159.00

BRED COWS: Scarce

BRED HEIFERS: Scarce

SOUTHEAST MISSOURI WEEKLY SUMMARY

(Jackson and Farmington)

Receipts: 1,491 Week ago: 1,218 Year ago: 0
 Compared to last week, feeders were uneven from 8.00 lower to 19.00 higher. Slaughter cows sold steady to 5.00 higher and bulls sold 5.00- 10.00 higher.

FEEDER STEERS:
 Medium and Large 1

300-400 lbs. 530.00-615.00
 400-500 lbs. 475.00-600.00
 500-600 lbs. 460.00-540.00
 600-700 lbs. 360.00-477.00
 700-800 lbs. 336.00-411.00
 800-900 lbs. 325.00-360.50

FEEDER HEIFERS:
 Medium and Large 1

300-400 lbs. 480.00-560.00
 400-500 lbs. 427.00-520.00
 500-600 lbs. 385.00-482.00
 600-700 lbs. 325.00-400.00
 700-800 lbs. 325.00-345.00

SLAUGHTER BULLS: Yield
 Grade 1-2 1145-2200 lbs. 162.00-177.00, high dressing 187.00-221.00, low dressing 150.00-157.00

SLAUGHTER COWS: Breaking and Boning (75-85% lean) 144.00-159.00; high dressing 159.00-184.00; Lean (85-90% lean) 100.00-132.00.

BRED COWS: Medium and Large 2, 2-8 yrs, 1175-1625 lbs, 2nd-3rd stage, 3200.00-4800.00 per head

COW & CALF PAIRS: Scarce

EAST CENTRAL MISSOURI WEEKLY SUMMARY

(Cuba, Vienna)

Receipts: 1,673 Week ago: 3,196 Year ago: 0

Compared to last week, feeder steers and heifers steady to 5.00 higher. Slaughter cows steady to 2.00 higher.

FEEDER STEERS:
 Medium and Large 1

300-400 lbs. 560.00-624.00
 400-500 lbs. 500.00-615.00
 500-600 lbs. 418.00-534.00
 600-700 lbs. 411.50-477.50
 700-800 lbs. 359.00-405.00
 800-900 lbs. 337.50-340.00

FEEDER HEIFERS:
 Medium and Large 1

300-400 lbs. 520.00-580.00
 400-500 lbs. 457.50-525.00
 500-600 lbs. 397.00-452.50
 600-700 lbs. 350.00-410.00
 700-750 lbs. 335.50-347.50

SLAUGHTER BULLS: Yield
 Grade 1-2, 1470-2220 lbs., high dressing 191.00-210.00, low dressing 211.00-223.00, 175.00-184.00.

SLAUGHTER COWS: Breaking and Boning, (70-85% lean) 158.00-170.50, high dressing 171.50-175.00; Lean (85-90%) 142.00-157.00, low dressing 118.00-147.00

BRED COWS: Medium and Large 1-2, 1005-1375 lbs., 2-8 yrs., 1st-3rd stage, 2700.00-3750.00, few up to 3850.00 per head

BRED HEIFERS: Scarce

NORTHWEST MISSOURI WEEKLY SUMMARY

(Tina)

Receipts: 1,043 Week ago: 2,166 Year ago: 0

Compared to last week, feeders sold mostly steady, the feeder heifers under 550 lbs. sold steady to 8.00 higher. Slaughter cows and bulls sold firm to 5.00 higher.

FEEDER STEERS:
 Medium and Large 1

400-500 lbs. 520.00-585.00
 500-600 lbs. 447.00-510.00
 600-650 lbs. 439.00-461.50
 700-800 lbs. 368.00-410.00
 800-850 lbs. 362.00-370.00

FEEDER HEIFERS:
 Medium and Large 1

400-500 lbs. 508.50-540.00
 500-600 lbs. 413.50-500.00
 600-700 lbs. 374.00-422.00

SLAUGHTER BULLS: Yield
 Grade 1-2, 1755-1995 lbs., 209.00-211.00

SLAUGHTER COWS: Breaking and Boning, (70-85% lean) 155.00-181.00, high dressing 173.00-183.00, low dressing 149.00-170.00; Lean (85-90%) 140.00-152.00, high dressing 155.00-168.00

BRED COWS: Scarce

BRED HEIFERS: Scarce

AFTERNOON NATIONAL SLAUGHTER CATTLE REVIEW

Thus far Friday negotiated cash trade in Nebraska was moderate on moderate to good demand. Compared to last week in Nebraska, dressed purchases traded mostly 6.00 higher at 388.00. Not enough live purchases for an adequate market test. The latest live market in Nebraska was established last week from 245.00-246.00, mostly 245.00. Trade was moderate to active on good demand in the Western Cornbelt. Compared to last week in the Western Cornbelt, live purchases traded 1.00-2.00 higher from 245.00-247.00. Dressed purchases traded 6.00-8.00 higher at 388.00 compared to last weeks light test. Trade in the Southern Palins was limited on moderate demand. The last established market in Texas was last week with live purchases from 246.00-248.00, mostly 248.00. The last established market in Kansas was last week with live purchases from 248.00- 249.00, mostly 248.00.

Negotiated Cash Sales:					
Confirmed:	26,532	Week Ago:	11,252	Year Ago:	9,752
Week to date:	27,906	Week Ago:	12,586	Year Ago:	41,073

<u>Live Basis</u>	<u>Steers</u>	<u>Heifers</u>
Over 80% Choice	242.00 - 247.00 avg 246.39	245.00 - 247.00 avg 246.68
65-80% Choice	-	-
35-65% Choice	-	-
0-35% Choice	-	-
Total All Grades	242.00 - 247.00 avg 246.39	245.00 - 247.00 avg 246.68
<u>Dressed Basis</u>		
Over 80% Choice	380.00 - 388.50 avg 387.90	388.00 - 388.00 avg 388.00
65-80% Choice	388.00 - 388.00 avg 388.00	387.00 - 387.00 avg 387.00
35-65% Choice	-	-
0-35% Choice	-	-
Total All Grades	380.00 - 388.50 avg 387.90	387.00 - 388.00 avg 387.95

<u>All Beef Type Steers/Heifers</u>	<u>Head</u>	<u>Avg Wt</u>	<u>Price Range</u>	<u>Wtd Avg</u>
Live FOB	11,820	1,519.0	240.00-247.00	245.85
Live Del	2,827	1,518.8	245.00-248.50	246.97
Dressed Del	11,709	989.7	380.00-394.00	388.15
Dressed FOB	176	974.7	382.00-386.50	384.51

WEEKLY COMMODITY FUTURES TRENDS

Compared to last week, Live Cattle 0.50 to 3.50 higher, Lean Hogs 2.40 to 3.60 higher, Feeder Cattle 0.77 to 1.87 higher.

Daily Futures Closes

	Mon.	Tues.	Wed.	Thu.	Fri.
Cattle					
Feb	Holiday	246.55	246.60	247.50	246.57
Apr		242.80	242.52	243.42	242.00
Jun		238.45	238.42	238.87	237.52
Aug		235.87	236.02	236.10	234.97
Oct		235.07	235.20	235.00	233.62
Lean Hogs					
Apr	Holiday	92.30	92.55	93.45	93.67
May		96.32	97.00	97.75	98.27
Jun		105.85	106.60	107.17	107.82
Jul		107.72	108.50	108.97	109.85
Aug		106.80	107.55	107.92	108.80
Fdr Cattle					
Mar	Holiday	370.97	370.57	370.27	368.02
Apr		367.82	368.00	367.65	365.05
May		363.80	364.22	363.57	361.00
Aug		363.75	364.00	363.32	360.70
Sep		361.60	361.72	361.22	358.57
Milk					
Feb	Holiday	15.06	15.07	15.07	15.02
Mar		15.93	16.68	16.94	16.51
Apr		16.49	17.23	17.50	17.30

WEEKLY COMMODITY GRAIN FUTURES TRENDS

Compared to last week, Soybeans 0.03 to 0.07 higher, Wheat 0.25 to 0.31 higher, Corn unchanged to 0.04 lower, KC Wheat 0.27 to 0.31 higher, Soybean Meal nearby 0.30 to 0.60 higher, distant 0.50 to 1.10 lower.

Daily Grain Futures Closes

	Mon.	Tues.	Wed.	Thu.	Fri.
Soybeans					
Mar	Holiday	1134	1133 1/2	1141	1137 1/2
May		1148 3/4	1149	1156	1153 1/4
Jul		1161 3/4	1161 1/2	1168	1166
Aug		1152 1/4	1152 1/2	1157 1/2	1156
Sep		1120 1/4	1119 1/2	1122 1/4	1119 3/4
Wheat					
Mar	Holiday	537 3/4	547	559 1/2	573 1/2
May		542 1/2	552 1/2	556 3/4	580 1/4
Jul		551 1/4	559 3/4	574 1/2	587 1/2
Sep		563 1/4	571 1/4	585 3/4	598 1/4
Dec		581 1/2	589	603	615
Corn					
Mar	Holiday	426 1/4	427	425 3/4	427 1/2
May		435 3/4	436 3/4	436 1/4	439 3/4
Jul		444 1/4	444 3/4	444 1/2	448 1/4
Sep		445	445 3/4	446 1/2	449 3/4
Dec		460	461	461 1/2	464 1/2
KC Wheat					
Mar	Holiday	538 3/4	551	565 1/2	572 1/4
May		550 1/2	561 3/4	576 3/4	585 1/4
Jul		563 3/4	574 1/4	588 1/2	597
Sep		578 3/4	588 1/4	602 1/4	610 1/4
Dec		600	609	622 1/2	630
SB Meal					
Mar	Holiday	305.80	303.90	304.80	309.80
May		310.80	308.50	308.90	313.80
Jul		315.70	313.20	312.90	317.90
Aug		316.60	313.60	313.00	317.20
Sep		316.40	313.00	312.10	315.70

MISSOURI GRAIN WEEKLY TRENDS

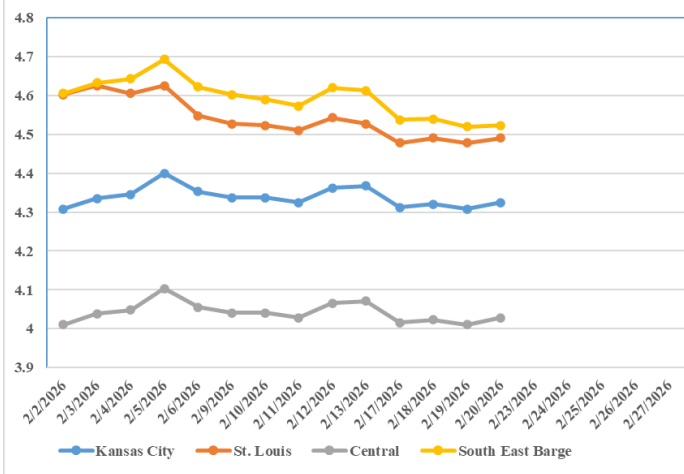
Compared to last week, Soybeans 0.03 to 0.04 higher, Wheat 0.25 to 0.30 higher, Corn 0.03 to 0.04 lower, Sorghum 0.04 lower.

Area	#1 Soybeans	#2 Soft Wheat	#2 Corn	#2 Grain Sorghum
Kansas City				
Friday**	10.83-11.03	5.08	4.36	3.46
Monday	Holiday	Holiday	Holiday	Holiday
Tuesday	10.84-11.04	4.97	4.31	3.41
Wednesday	10.83-11.03	5.07	4.32	3.42
Thursday	10.91-11.11	5.19	4.30	3.70
Friday	10.87-11.07	5.33	4.32	3.42
St. Louis				
Friday**	11.57-11.58	5.36-5.48	4.52	4.56
Monday	Holiday	Holiday	Holiday	Holiday
Tuesday	11.58	5.25-5.37	4.47-4.48	4.51
Wednesday	11.57-11.58	5.35-5.47	4.49	4.52
Thursday	11.65	5.47-5.59	4.47	4.50
Friday	11.61	5.61-5.78	4.48-4.49	4.52
Central				
Friday**	10.83-10.93	5.08	4.01-4.09	---
Monday	Holiday	Holiday	Holiday	---
Tuesday	10.84-10.94	4.97	3.96-4.04	---
Wednesday	10.83-10.93	5.07	3.97-4.05	---
Thursday	10.91-11.01	5.19	3.95-4.03	---
Friday	10.87-10.97	5.33	3.97-4.05	---
S.E. MO				
Friday**	11.55-11.67	---	4.53-4.66	---
Monday	Holiday	---	Holiday	---
Tuesday	11.56-11.66	---	4.48-4.59	---
Wednesday	11.55-11.65	---	4.49-4.60	---
Thursday	11.63-11.73	---	4.47-4.58	---
Friday	11.54-11.67	---	4.46-4.57	---

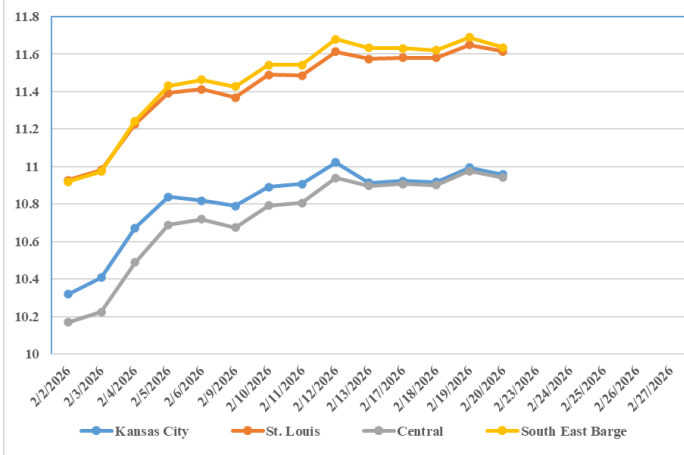
(PRICES PER BUSHEL) *NEW CROP **PREVIOUS WEEK'S PRICES
*Bids calculated using Kansas City, St. Louis, and St. Joseph bids

MONTHLY GRAIN CROP

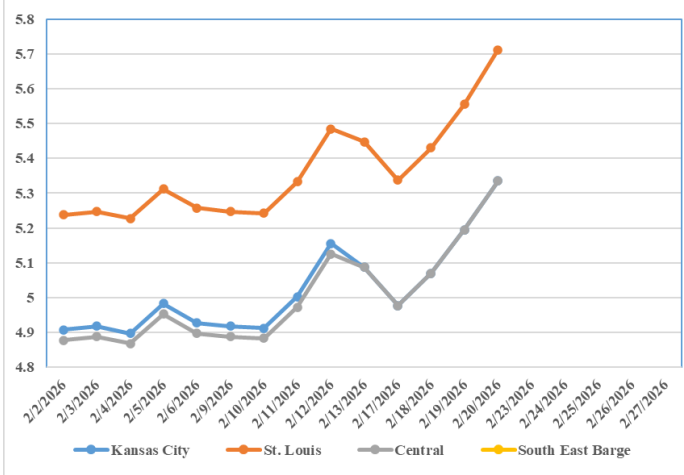
February 2026 Corn Bids



February 2026 Soybean Bids



February 2026 Wheat Bids



*Axis value ranges may be updated to reflect data points.
Only dates in which markets are trading and only current cash bids are represented.

**WHOLESALE FEEDSTUFFS PRICES
(DOLLARS PER TON-BULK BASIS)**

Area	Soybean Hulls	Soybean Meal 46.5-48%	Corn Gluten Pellets 21%	Wheat Middlings
Kansas City	150.00	295.80	243.50	246.67
St. Louis	N/A	N/A	212.00	210.00

CATTLE ON FEED

United States Cattle on Feed Down 2 Percent

Cattle and calves on feed for the slaughter market in the United States for feedlots with capacity of 1,000 or more head totaled 11.5 million head on February 1, 2026. The inventory was 2 percent below February 1, 2025.

Placements in feedlots during January totaled 1.74 million head, 5 percent below 2025. Net placements were 1.68 million head. During January, placements of cattle and calves weighing less than 600 pounds were 360,000 head, 600-699 pounds were 365,000 head, 700-799 pounds were 455,000 head, 800-899 pounds were 381,000 head, 900-999 pounds were 105,000 head, and 1,000 pounds and greater were 70,000 head.

Marketings of fed cattle during January totaled 1.63 million head, 13 percent below 2025.

Other disappearance totaled 55,000 head during January, 8 percent below 2025.

Cattle on Feed and Annual Size Group Estimates

Cattle and calves on feed for slaughter market in the United States for feedlots with capacity of 1,000 or more head represented 82.7 percent of all cattle and calves on feed in the United States on January 1, 2026. This is comparable to the 82.5 percent on January 1, 2025.

Marketings of fed cattle for feedlots with capacity of 1,000 or more head during 2025 represented 87.1 percent of total cattle marketed from all feedlots in the United States, down slightly from 87.2 percent during 2024

MISSOURI WEEKLY HAY SUMMARY 2/18/2026

Several areas of the state received some much need moisture over the last week. Drought conditions are still slightly concerning, but everyone knows this situation can quickly change before growing season starts. Although there could and likely will still be more winter to come recent weather hasn't felt like it. Record highs have some daffodils blooming and peeper frogs peeping. The supply of hay is moderate to heavy for this point in the feeding season, there is some movement taking place, but no one is really having to look very hard to find hay. Prices continue to be mostly steady even with the thoughts of spring, abundant supplies, and cheap corn. The Missouri Department of Agriculture has a hay directory at <https://apps.mda.mo.gov/haydirectory> or visit the University of Missouri Extension feed stuff finder at <https://feedstufffinder.org>

Alfalfa - Supreme 250.00-300.00, small square 10.00-15.00 per bale
Alfalfa - Premium 175.00-225.00
Alfalfa - Good 150.00-175.00, small square 6.00-10.00 per bale
Alfalfa - Fair 125.00-150.00
Mixed Grass—Premium 150.00-200.00
Mixed grass - Good/Premium 100.00-150.00
Mixed grass-Fair/Good 75.00-125.00, small square 3.00-7.00 per bale
Mixed grass - Fair 20.00-45.00 per large round bale
Wheat straw - 4.00-7.00 per small square bale

Please Note: The above volumes (tonnage, acres, and bales) listed are for confirmed trades only, it does not include estimated volume (tonnage) for bids or offers to the trade. List your hay for sale at: [Hay Listing Online Form](#). Explanation of Hay Quality Guidelines: [Hay Quality Designation Guidelines](#). Glossary of Terms: [Livestock, Poultry, & Grain Hay Terms](#)

MISSOURI WEEKLY SHEEP/GOAT AUCTION SUMMARY

Receipts: 1,496 Week Ago: 5,108 Last Year: 0

SHEEP: Feeder Lambs: Small and Medium 1-2 hair 30-50 lbs 417.50-500.00. Slaughter Lambs: Choice and Prime 1 hair 50-70 lbs 425.00-440.00. Choice and Prime 1-2 hair 40-70 lbs 360.00-415.00; 70-100 lbs 325.00-375.00. Choice and Prime 1-3 hair 40-50 lbs 417.50-465.00; 60-70 lbs 400.00-450.00; 70-80 lbs 385.00-430.00; 80-90 lbs 332.50-380.00; 90-100 lbs 345.00-370.00. Choice 1-3 hair 50-75 lbs 347.50-400.00. Ewes Good 2-3 hair 90-150 lbs 170.00-192.50. Utility and Good 1-3 hair 90-150 lbs 140.00-160.00. Bucks hair 140-190 lbs 130.00-180.00.

GOATS: Feeder Kids: Selection 1 30-50 lbs 405.00-180.00. Selection 2 40-50 lbs 305.00-405.00. Slaughter Kids; Selection 1 50-70 lbs 420.00-505.00. Selection 2 50-75 lbs 300.00-390.00. Nannies Selection 1-2 75-100 lbs 150.00-227.50; 100-175 lbs 145.00-215.00. Billies Selection 1-2 100-150 lbs 192.50-232.50; 150-200 lbs 207.00-245.00.

Explanatory Notes: Stage - Represents estimated lambing/kidding period (Open, Exp=exposed, Bred, Fall = Sep-Nov, Win = Dec-Feb, Spr = Mar-May, Sum=Jun-Aug; w/s = woolled and shorn; /hd= per head; /fam=per family
All price CWT unless otherwise noted.

MISSOURI DROUGHT MONITOR

Date	None	D0	D1	D2	D3	D4
2/18/26	7.55	41.09	31.96	17.16	2.25	0.0
2/10/26	7.55	19.67	41.56	29.74	1.48	0.0
2/18/25	60.54	29.79	9.67	0.0	0.0	0.0

Reflects percentage of Missouri impacted by drought. D0 Abnormally Dry; D1 Moderate Drought; D2 Severe Drought; D3 Extreme Drought; D4 Exceptional Drought

NATIONAL DIRECT DELIVERED FEEDER PIG REPORT

2/20/26 Receipts: 146,602 Week ago: 95,781 Year Ago: 105,608
Early weaned pigs are steady to weak and feeder pigs are 2.00 higher.

Cash: 85,835 head 88.00-125.00, weighted average 109.42

Formula: 33,897 head 50.53-117.73, weighted average 75.09

Feeder pigs 40 pounds basis: Cash 26,870 head 118.00-140.00, weighted average 126.61

NATIONAL DAILY DIRECT PRIOR DAY HOG REPORTS 2/20/26

BARROWS AND GILTS (Carcass Basis): 2,245 head
Base Carcass Price 81.00-92.00, weighted average 90.11

SOWS (Live Basis): 7,272 head
300-500 lbs. 30.00-84.00
Over 500 lbs. 63.15-84.84

MISSOURI WEEKLY DIRECT SLAUGHTER CATTLE REPORT 2/20/26

Weekly Receipts: 160 Week ago: 120 Year ago: 340
Trading as of Friday afternoon, is light with a few Flat dressed sales 7.00 higher at 385.00 with Grid dressed sale inactive.

LIVE STEERS & HEIFERS: DRESSED STEERS & HEIFERS:
No sales reported. 4 loads Fri. afternoon Flat 385.00

GRADE AND EIGHT (Grid): No sales reported.

Click here for the current [National Crop Progress](#)

Click here for the current [Missouri Crop Progress](#)

The current hay directory can be found at: [Hay Directory](#).