

# Weekly Market Summary

Published by:  
**Missouri Department of Agriculture**  
**Ag Business Development Division**  
**Market News Program**



Chris Chinn, Director  
 Jill Wood, Division Director  
 Tony Hancock, Editor  
[agmarketnews.mo.gov](http://www.ams.usda.gov/marketnews.htm)  
<http://www.ams.usda.gov/marketnews.htm>

Michael Kehoe, Governor

Volume XLVI, Number 11 ♦ P.O. Box 630, Jefferson City, MO 65102 ♦ (573) 751-4211 ♦ Mon, Mar 16, 2026

## MISSOURI WEEKLY FEEDER CATTLE WEIGHTED AVERAGE REPORT

Feeder Cattle Receipts: 23,160 Week ago: 23,186 Year ago: 33,067  
 Steers and Heifers Medium and Large 1—Weighted average weights and prices

### STEERS: Medium and Large 1

281 lbs. 673.63	466 lbs. 551.86	672 lbs. 409.59	873 lbs. 338.99
324 lbs. 655.84	524 lbs. 503.90	725 lbs. 385.97	909 lbs. 335.00
373 lbs. 614.39	570 lbs. 464.16	779 lbs. 362.05	955 lbs. 321.00
425 lbs. 575.61	625 lbs. 434.73	819 lbs. 351.65	

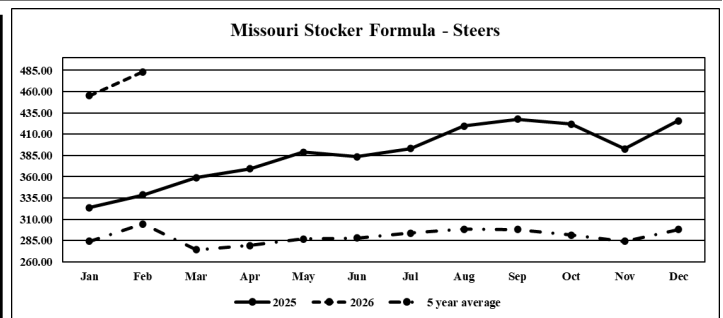
### HEIFERS: Medium and Large 1

272 lbs. 616.37	474 lbs. 472.70	664 lbs. 382.54	861 lbs. 319.56
331 lbs. 567.08	522 lbs. 443.21	719 lbs. 360.91	924 lbs. 302.18
371 lbs. 546.50	572 lbs. 420.19	768 lbs. 339.79	955 lbs. 312.00
426 lbs. 507.31	621 lbs. 397.99	833 lbs. 318.15	

## MISSOURI STEER (HEIFER) STOCKER FORMULA 3/16/2026

Monday's Missouri Stocker formula consists of **4,017 (4,207)** head with a weighted average weight of **541.58 (541.82)** lbs. and a price value of **471.21 (419.65)**, 6.96 lower (3.63 lower) than a week ago.

This a rolling seven day calculated weighted value which combines all Feeder Steers reported by MDA/USDA Market News Service weighing from 400-649 lbs. in the Medium and Large 1 and Medium and Large 1-2 frame and muscle classifications, including all comment cattle except Brahman X. Heifer values are in parentheses.



\*Graph is updated the first Monday of each month. Axis value ranges may be updated to reflect data points.

## NATIONAL BOXED BEEF CUTOUT VALUES

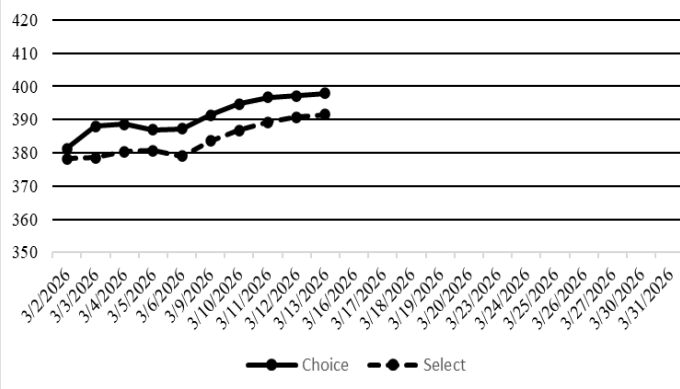
DATE	CHOICE	SELECT	TOTAL LOADS
3/9	391.29	383.62	48
3/10	394.67	386.77	94
3/11	396.70	389.25	87
3/12	397.09	390.82	114
3/13	397.92	391.54	53
<b>5 Day Simple Average</b>	<b>395.53</b>	<b>388.40</b>	

## MISSOURI WEEKLY CATTLE AUCTION SUMMARY

Total Receipts: 26,139 Week Ago: 27,253 Year Ago: 38,009

Compared to last week, feeders sold 5.00 to 10.00 lower. This week was a very close repeat of last week, supplies were light to moderate and demand remains good just at lower price levels. Weather continues to do Missouri things as record highs were replaced by sharp north winds, a little snow, and temperatures falling into the low teens to start the new week. Markets continue to see a lot of volatility. The JBS plant in Greeley remained dark all week and workers are projected to be walking the picket lines by the publication of this report. Light slaughter volumes should allow cattle to be shuffled to other locations without much disruption to the supply lines for the time being at the current slaughter levels. Ongoing conflict in the Middle East has fuel and fertilizer prices climbing right as farmers near time to spread on pastures and planting season grows near. Concerns about the availability of fertilizer ingredients also exist. A few stick out sales this week included: 20 head of 455 lb. steers at Joplin Regional Stockyards that sold for 600.00. Kingsville Livestock Auction sold 27 head of 534 lb. steers for 520.00 and a load of 866 lb. steers for 351.00. Callaway Livestock Center sold 77 head of 554 lb. steers for 480.00. Ozarks Regional Stockyards sold 27 head of 605 lb. steers for 452.00. Unionville Livestock Market sold a load of 664 lb. steers for 417.25 and another load of 907 lb. steers for 348.75. F&T Livestock Market sold 29 head of 719 lb. steers for 400.00. Mid-Missouri Stockyards sold a load of 777 lb. steers for 365.00. Eastern Missouri Commission Company sold 25 head of 800 lb. steers for 362.00. On the heifer side of the market Lolli Brothers Livestock Market sold a package of 507 lb. heifers at 464.00 and several barns had lots of 700-720 lb. heifers that sold for 374.50-375.00 this week the largest draft came from Windsor Livestock Auction which sold 153.00 head of 711 lb. heifers at 375.00. Boxed beef cutout values closed sharply higher for the week. Choice closed on Friday at 397.92, up 10.70 and select closed at 391.54, up 12.57 compared to last week. The choice/select spread at 6.38 per cwt. Negotiated feedlot sales as of the 2:00 cutoff time on Friday afternoons report was slightly under 40k head. Live prices were reported mostly 5.00 lower at 235.00 and dressed sales mostly 8.00 lower at 372.00. The Missouri Stocker formula consists of 4017 head with a weighted average weight of 541.58 lbs. and a price value of 471.21, 6.96 lower than last week. The steer/heifer spread is 51.56.

## Boxed Beef Cuts March 2026



\*Axis value ranges may be updated to reflect data points.

## WEEKLY LIVESTOCK SLAUGHTER

	CATTLE	HOGS	SHEEP
Week to Date:	525,000	2,532,000	39,000
Last Week:	521,000	2,488,000	37,000
Last Year:	586,280	2,501,000	39,161

The Weekly Market Summary, as well as historical summaries, are available on our website <https://agmarketnews.mo.gov/summaries>  
 Market News Hotline: 1-573-522-9244  
 Check out the latest updates on our YouTube Channel: [MDA Market News](https://www.youtube.com/channel/UCMjKjKjKjKjKjKjKjKjKjKj)

**SOUTHWEST MISSOURI WEEKLY SUMMARY**

(Joplin, Springfield, Exeter)

Receipts: 9,362 Week ago: 13,813 Year Ago: 13,843

Compared to last week, feeder sold uneven from 10.00 lower to 10.00 higher, a few light weight calves sold sharply higher. Slaughter cows sold from 1.00 lower to 4.00 higher.

**FEEDER STEERS:**  
Medium and Large 1

300-400 lbs.	570.00-700.00
400-500 lbs.	517.50-610.00
500-600 lbs.	440.00-550.00
600-700 lbs.	399.00-460.00
700-800 lbs.	359.00-390.00
800-900 lbs.	331.50-361.00
900-925 lbs.	330.00-333.00

**FEEDER HEIFERS:**  
Medium and Large 1

300-400 lbs.	500.00-620.00
400-500 lbs.	450.00-555.00
500-600 lbs.	390.00-475.00
600-700 lbs.	360.00-420.00
700-800 lbs.	330.00-384.00
800-900 lbs.	316.00-322.00

**FEEDER HOLSTEIN STEERS**  
Large 3

500-600 lbs.	350.00-360.00
600-700 lbs.	275.00-350.00
700-750 lbs.	230.00-260.00
800-850 lbs.	248.00-262.50
41 hd 934 lbs.	260.50

**SLAUGHTER COWS:** Breaking and Boning (70-85% lean) 150.00-173.00, high dressing 167.00-190.00, low dressing 125.00-157.50; Lean (85-90%) 131.00-160.00; high dressing 152.50-172.50; low dressing 110.00-137.50

**SLAUGHTER BULLS:** Yield Grade 1-2 1165-2400 lbs. 182.50-216.00, high dressing 202.50-229.00; low dressing 159.00-192.50

**BRED COWS:** Medium and Large 1, 958-1420 lbs., 2-8 yrs., 1st-3rd stage, 3200.00-4200.00 per head

**COW CALF PAIRS:** Medium and Large 1-2 with 150-300 lb. calves, 2-8 yrs., Open, 3600.00-4600.00 per pair.

Medium and Large 1-2, 850-1500 lbs., 2-8 yrs., 1st-3rd stage, 2300.00-4125.00; Over 5 yrs., 1st-3rd stage, 2100.00-3800.00 per head

**BRED HEIFERS:** Medium and Large 1-2, 850-1150 lbs, 1st-3rd stage, 2-4 yrs., 2550.00-3400.00 per head

**SOUTH CENTRAL MISSOURI WEEKLY SUMMARY**

(West Plains, Phillipsburg)

Receipts: 2,511 Week ago: 3,602 Year Ago: 4,889

Compared to last week, feeder sold 2.00 to 8.00 lower. Although instances of some light weights under 450 lbs sold 10.00 to 15.00 higher. Slaughter cows sold steady.

**FEEDER STEERS:**  
Medium and Large 1

300-400 lbs.	615.00-705.00
400-500 lbs.	520.00-620.00
500-600 lbs.	442.50-540.00
600-700 lbs.	390.00-466.00
700-800 lbs.	358.00-391.00
800-850 lbs.	340.00
114 hd. 955 lbs.	321.00

**FEEDER HEIFERS:**  
Medium and Large 1

300-400 lbs.	530.00-560.00
400-500 lbs.	435.00-512.50
500-600 lbs.	385.00-447.50
600-700 lbs.	352.00-417.50
700-750 lbs.	320.00-341.50

**FEEDER HOLSTEIN STEERS:**  
Large 3

Scarce

**SLAUGHTER COWS:** Breaking and Boning (70-85% lean) 150.00-170.00; low dressing 131.00-157.00. Lean (85-90%) 134.00-159.00, high dressing 148.00-169.00, low dressing 117.00-130.00

**SLAUGHTER BULLS:** Yield Grade 1-2 1280-2180 lbs. 177.00-202.00; high dressing 197.50-221.00; low dressing 156.00-181.00

**BRED COWS:** Medium and Large 1-2, 1132-1590 lbs., 2-8 yrs., 1st stage, 2600.00-3400.00, 2nd-3rd stage, 2700.00-3750.00

**COW CALF PAIRS:** Medium and Large 1-2 with 150-300 lb. calves, 2-8 yrs., Open, 3600.00-4100.00

**WEST CENTRAL MISSOURI WEEKLY SUMMARY**

(Kingsville, Windsor, Butler, Osceola)

Receipts: 5,524 Week ago: 2,130 Year ago: 5,848

Compared to last week, feeders sold steady to 15.00 lower, although some light weight calves and some fancier, thin fleshed grazing type cattle sold firm to higher. Slaughter cows sold steady.

**FEEDER STEERS:**  
Medium and Large 1

300-400 lbs.	555.00-740.00
400-500 lbs.	481.00-622.50
500-600 lbs.	442.00-545.00
600-700 lbs.	398.00-485.00
700-800 lbs.	354.00-395.00
800-900 lbs.	323.00-357.00

**FEEDER HEIFERS:**  
Medium and Large 1

300-400 lbs.	510.00-630.00
400-500 lbs.	420.00-550.00
500-600 lbs.	387.00-470.00
600-700 lbs.	358.00-414.00
700-800 lbs.	321.00-375.00
800-900 lbs.	312.50-334.00

**SLAUGHTER BULLS:** Yield Grade 1-2 1245-2405 lbs. 183.00-218.00, high dressing 214.00-231.00, low dressing 168.00-189.00

**SLAUGHTER COWS:** Breaking and Boning (70-85% lean) 149.00-180.00, high dressing 163.00-185.00, low dressing 137.00-161.00; Lean (85-90%) 135.00-156.00

**BRED COWS:** Medium and Large 1-2, Over 5 yrs., 1st-2nd stage, 2650.00

**BRED HEIFERS:** Scarce

**NORTHEAST MISSOURI WEEKLY SUMMARY**

(Bowling Green, Kingdom City, Palmyra)

Receipts: 4,366 Week ago: 2,525 Year ago: 7,129

Compared to last week, steers 600-700 lbs and heifers over 600 lbs sold steady to 10.00 lower, other weights sold with steady to lower undertones. Slaughter cows sold steady.

**FEEDER STEERS:**  
Medium and Large 1

400-500 lbs.	497.50-560.00
500-600 lbs.	440.00-502.00
600-700 lbs.	402.00-447.50
700-800 lbs.	357.50-400.00
800-900 lbs.	325.00-362.50
900-950 lbs.	333.75

**FEEDER HEIFERS:**  
Medium and Large 1

300-400 lbs.	480.00-535.00
400-500 lbs.	443.00-510.00
500-600 lbs.	407.50-460.00
600-700 lbs.	363.00-406.00
700-800 lbs.	336.00-362.00
800-900 lbs.	318.25-329.75

**SLAUGHTER BULLS:** Yield Grade 1-2 1400-2355 lbs. 186.00-204.00; high dressing 205.00-226.00

**SLAUGHTER COWS:** Breaking and Boning, (70-85% lean) 161.00-175.00; high dressing 172.00-182.00; low dressing 145.00-160.00. Lean (85-90%) 146.00-159.00; low dressing 128.00-150.00

**SLAUGHTER STEERS:** Choice and Prime 2-4, 247.00; Choice 2-3, 233.00-243.00

**SLAUGHTER HEIFERS:** Choice 2-3 230.00-240.00

**BRED COWS:** Scarce

**HEIFER PAIRS:** Scarce

**NORTH CENTRAL MISSOURI WEEKLY SUMMARY**

(Macon, Unionville, Green City, New Cambria)

Receipts: 2,073 Week ago: 361 Year ago: 1,821

Compared to two weeks ago steers over 650 lbs and heifers over 700 lbs sold 4.00-15.00 lower. Lighter weights sold steady to firm on a limited test. Slaughter cows sold steady to 10.00 lower.

\*Some sale barns on a bi-weekly schedule and may not have a sale each week.

**FEEDER STEERS:**  
Medium and Large 1

400-500 lbs.	559.00-577.00
500-600 lbs.	465.00-533.00
600-700 lbs.	411.00-429.50
750-800 lbs.	350.50-354.00
900-925 lbs.	348.00-348.75

**FEEDER HEIFERS:**  
Medium and Large 1

400-500 lbs.	450.00-505.00
500-525 lbs.	435.00-464.00
600-700 lbs.	356.00-405.50
700-750 lbs.	356.50-375.00
44 hd. 955 lbs.	312.00

**SLAUGHTER BULLS:** Yield Grade 1-2 1410-2370 lbs. 194.00-220.00; high dressing 207.00-241.00

**SLAUGHTER COWS:** Breaking and Boning (70-85% lean) 150.00-175.00, low dressing 144.00-161.00; Lean (85-90%) 145.00-159.00

**BRED COWS:** Medium and Large 1-2, 1245-1475 lbs., 3rd stage, 2-8 yrs., 4000.00; Over 5 yrs., 3325.00

**COW CALF PAIRS:** Medium and Large 1-2 with over 300 lb. calves, 5-8 yrs., 1st stage, 4725.00

**SOUTHEAST MISSOURI WEEKLY SUMMARY**

(Jackson and Farmington)

Receipts: 777 Week ago: 1,863 Year ago: 1401

Compared to last week, feeders uneven from 9.00 lower to 12.00 higher. Slaughter cows steady and bulls 2.00-5.00 higher.

**FEEDER STEERS:**

Medium and Large 1

300-400 lbs. 490.00-610.00  
400-500 lbs. 475.00-590.00  
500-600 lbs. 425.00-515.00  
600-700 lbs. 365.00-422.00  
700-800 lbs. 340.00-360.00

**FEEDER HEIFERS:**

Medium and Large 1

300-400 lbs. 450.00-572.00  
400-500 lbs. 390.00-560.00  
500-600 lbs. 350.00-467.00  
600-700 lbs. 330.00-365.00

**SLAUGHTER BULLS:** Yield Grade 1-2 1430-2380 lbs. 174.00, high dressing 180.00-240.00, low dressing 150.00-158.00

**SLAUGHTER COWS:** Breaking and Boning (75-85% lean) 140.00-157.00; high dressing 141.00-177.00; Lean (85-90% lean) 89.00-133.00; high dressing 126.00-165.00

**BRED COWS:** Medium and Large 2, 2-8 yrs, 1100-1995 lbs, 1st-3rd stage, 2550.00-3300.00

**COW & CALF PAIRS:** Scarce

**EAST CENTRAL MISSOURI WEEKLY SUMMARY**

(Cuba, Vienna)

Receipts: 301 Week ago: 1,551 Year ago: 1,677

Compared to last week, not enough feeders to establish a trend. Slaughter cows sold firm to 2.00 higher.

**FEEDER STEERS:**

Medium and Large 1 & 1-2

300-400 lbs. 550.00-640.00  
400-500 lbs. 500.00-542.50  
500-600 lbs. 435.00-480.00  
600-700 lbs. 422.50-425.00

**FEEDER HEIFERS:**

Medium and Large 1 & 1-2

300-400 lbs. 540.00-575.00  
400-500 lbs. 435.00-495.00  
500-600 lbs. 425.00-485.00

**SLAUGHTER BULLS:** Yield grade 1-2, 1525-2150 lbs., 205.00-206.50, high dressing 219.00-224.00

**SLAUGHTER COWS:** Breaking and Boning, (70-85% lean) 159.50-173.50, high dressing 179.50; Lean (85-90%) 140.00-161.50, low dressing 127.00-140.00

**BRED COWS:** Medium and Large 1-2, 995-1285 lbs., 2-8 yrs., 1st-3rd stage, 2750.00-3600.00 per head

**BRED HEIFERS:** Scarce

**NORTHWEST MISSOURI WEEKLY SUMMARY**

(Tina)

Receipts: 1,225 Week ago: 1,408 Year ago: 1,401

Compared to last week, feeders sold steady to 5.00 lower. Slaughter cows and bulls sold steady.

**FEEDER STEERS:**

Medium and Large 1

500-600 lbs. 471.00-500.00  
600-700 lbs. 418.00-445.00  
700-800 lbs. 379.00-395.00  
119 hd. 920 lbs. 328.75

**FEEDER HEIFERS:**

Medium and Large 1

400-500 lbs. 455.00-507.50  
500-600 lbs. 441.50  
600-700 lbs. 389.00-406.75  
700-800 lbs. 354.50-379.00

**SLAUGHTER BULLS:** Yield Grade 1-2, 1600-2155 lbs., 192.50-208.00, ind high dressing 216.00

**SLAUGHTER COWS:** Breaking and Boning, (70-85% lean) 151.00-173.00, high dressing 169.00-185.00; Lean (85-90%) 141.00-149.00, low dressing 121.00-135.00

**BRED COWS:** Scarce

**BRED HEIFERS:** Scarce

**AFTERNOON NATIONAL SLAUGHTER CATTLE REVIEW**

So far for Friday, negotiated cash trade has been limited on moderate to good demand in Kansas. There have been a few live purchases from 233.00-235.00, but not enough for an adequate market test. The last established market test in Kansas was Wednesday at 235.00. Negotiated cash trade has been mostly inactive on light demand in all other major feeding regions. The last established market test in the Texas Panhandle was last week with live purchases at mostly 240.00. The last established market test in Nebraska was Wednesday with live purchases at mostly 235.00 and dressed purchases at mostly 372.00. The last established market test in the Western Cornbelt was Wednesday with live purchases from 233.00-235.00, mostly 235.00, and dressed purchases at 372.00.

**Negotiated Cash Sales:**

<b>Confirmed:</b>	1,990	<b>Week Ago:</b>	48,936	<b>Year Ago:</b>	24,687
<b>Week to date:</b>	39,325	<b>Week Ago:</b>	50,844	<b>Year Ago:</b>	26,681

<b>Live Basis</b>	<b>Steers</b>	<b>Heifers</b>
<b>Over 80% Choice</b>	234.00-236.00 avg 235.23	234.00-234.00 avg 234.00
<b>65-80% Choice</b>	-	233.00-234.00 avg 233.87
<b>35-65% Choice</b>	-	-
<b>0-35% Choice</b>	-	-
<b>Total All Grades</b>	234.00-236.00 avg 235.23	233.00-234.00 avg 233.88
<b>Dressed Basis</b>		
<b>Over 80% Choice</b>	-	-
<b>65-80% Choice</b>	-	-
<b>35-65% Choice</b>	-	-
<b>0-35% Choice</b>	-	-
<b>Total All Grades</b>	-	-

<b>All Beef Type Steers/Heifers</b>	<b>Head</b>	<b>Avg Wt</b>	<b>Price Range</b>	<b>Wtd Avg</b>
Live FOB	1,257	1,423.9	233.00-239.00	235.46
Live Del	538	1,508.8	237.00-240.00	238.19
Dressed Del	40	961.0	370.00-370.00	370.00
Dressed FOB	35	868.0	375.00-375.00	375.00

**WEEKLY COMMODITY FUTURES TRENDS**

Compared to last week, Live Cattle 2.43 to 3.67 lower, Lean Hogs 2.17 to 3.40 lower, Feeder Cattle 6.15 to 8.90 lower.

**Daily Futures Closes**

	Mon.	Tues.	Wed.	Thu.	Fri.
<b>Cattle</b>					
Apr	230.15	232.37	230.15	231.25	230.90
Jun	227.42	230.20	228.07	229.37	228.95
Aug	225.57	228.35	226.17	227.27	226.82
Oct	224.25	227.02	224.80	225.67	225.22
Dec	224.67	227.35	225.15	226.05	225.55
<b>Lean Hogs</b>					
Apr	94.82	96.07	95.20	94.35	93.45
May	100.37	101.35	100.05	99.15	98.40
Jun	109.90	110.65	109.25	108.17	107.37
Jul	111.97	112.80	111.30	109.92	109.30
Aug	110.90	111.92	110.57	109.25	108.67
<b>Fdr Cattle</b>					
Mar	350.65	353.35	348.72	348.22	349.47
Apr	346.55	349.67	343.30	343.00	343.10
May	342.87	346.40	339.82	339.92	339.17
Aug	342.75	345.85	339.95	340.20	339.47
Sep	341.02	344.12	338.67	339.05	338.40
<b>Milk</b>					
Mar	16.42	16.22	16.16	16.16	16.18
Apr	17.11	16.36	16.22	16.33	16.66
May	17.47	16.88	16.75	16.85	17.19

**WEEKLY COMMODITY GRAIN FUTURES TRENDS**

Compared to last week, Soybeans 0.15 to 0.26 higher, Wheat 0.02 to 0.08 higher, except May 0.03 lower, Corn 0.06 to 0.07 higher, KC Wheat 0.06 to 0.10 higher, Soybean Meal 2.40 to 6.80 higher.

**Daily Grain Futures Closes**

	Mon.	Tues.	Wed.	Thu.	Fri.
<b>Soybeans</b>					
Mar	1180 1/2	1187 1/4	1200 1/2	1213	1211
May	1196 1/4	1201 3/4	1214	1227 1/4	1225 1/4
Jul	1209	1215	1227 1/4	1240	1237 1/2
Aug	1195 3/4	1200 1/4	1211 1/2	1221 1/4	1218 1/4
Sep	1155 1/2	1161	1170 3/4	1175 1/4	1169 3/4
<b>Wheat</b>					
Mar	598	574 3/4	588 1/2	592 1/4	618 1/2
May	603 1/4	591	594 3/4	598 1/2	613 3/4
Jul	613	603 1/4	605 3/4	609 1/2	624 1/2
Sep	625 1/4	617	619 1/4	622 3/4	637 1/4
Dec	641 1/4	634	636 1/2	639 1/4	653 3/4
<b>Corn</b>					
Mar	437 1/2	436 1/4	444 1/4	448 1/4	452 1/2
May	453 3/4	452 1/4	460 1/4	462 1/2	467 1/4
Jul	465 1/2	463 1/4	472	474	478 1/4
Sep	468 1/4	465 3/4	475 1/2	477	479 1/4
Dec	481 3/4	479 3/4	489	490	491 1/2
<b>KC Wheat</b>					
Mar	607 3/4	596 3/4	601 1/2	601 1/2	618 3/4
May	619 3/4	608 3/4	613 1/2	613 1/2	630
Jul	633	623	627 1/4	627 1/4	643 3/4
Sep	647 1/2	638 1/4	642 1/4	642 1/4	658 1/2
Dec	666	358	661 3/4	661 1/2	677
<b>SB Meal</b>					
Mar	308.80	311.80	316.40	319.90	319.90
May	313.50	314.50	315.40	320.20	322.70
Jul	316.30	317.10	317.70	322.50	324.20
Aug	314.70	315.50	315.60	320.00	320.90
Sep	312.30	313.20	313.40	316.80	317.00

**MISSOURI GRAIN WEEKLY TRENDS**

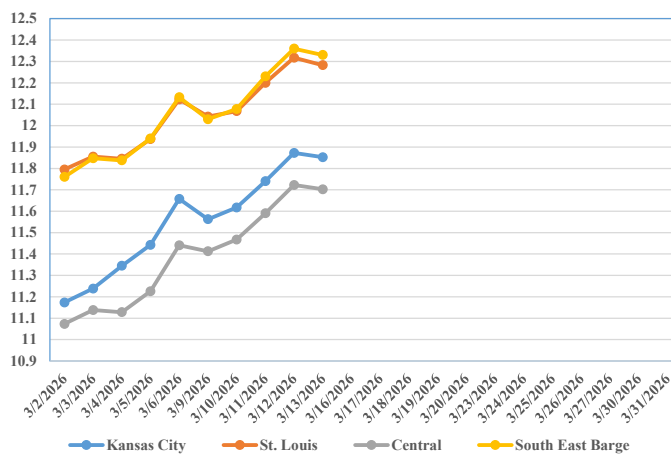
Compared to last week, Soybeans 0.15 to 0.25 higher, Wheat 0.03 lower, Corn 0.03 to 0.07 higher, Sorghum 0.18 lower to 0.32 higher.

Area	#1 Soybeans	#2 Soft Wheat	#2 Corn	#2 Grain Sorghum
<b>Kansas City</b>				
Friday**	11.55-11.75	5.66	4.57	3.65
Monday	11.51-11.61	5.53	4.50	3.58
Tuesday	11.56-11.66	5.41	4.49	3.82
Wednesday	11.69-11.79	5.44	4.57	3.90
Thursday	11.82-11.92	5.48	4.59	3.92
Friday	11.80-11.90	5.63	4.64	3.97
<b>St. Louis</b>				
Friday**	12.11-12.12	6.11-6.21	4.75	4.70
Monday	12.04	5.98-6.05	4.61-4.62	4.54
Tuesday	12.04-12.08	5.86-5.93	4.60-4.64	4.53
Wednesday	12.19-12.21	5.89-5.96	4.74	4.50
Thursday	12.31-12.32	5.93-6.03	4.72-4.74	4.47
Friday	12.28	6.08-6.18	4.78	4.52
<b>Central</b>				
Friday**	11.40-11.45	5.71-5.76	4.30-4.35	---
Monday	11.36-11.46	5.58-5.68	4.18-4.23	---
Tuesday	11.41-11.51	5.46-5.56	4.17-4.22	---
Wednesday	11.54-11.64	5.49-5.59	4.25-4.30	---
Thursday	11.67-11.77	5.53-5.63	4.27-4.32	---
Friday	11.65-11.75	5.68-5.78	4.32-4.37	---
<b>S.E. MO</b>				
Friday**	12.05-12.20	---	4.71-4.80	---
Monday	11.96-12.08	---	4.63-4.67	---
Tuesday	12.01-12.13	---	4.61-4.66	---
Wednesday	12.14-12.26	---	4.69-4.77	---
Thursday	12.28-12.39	---	4.72-4.80	---
Friday	12.22-12.37	---	4.77-4.87	---

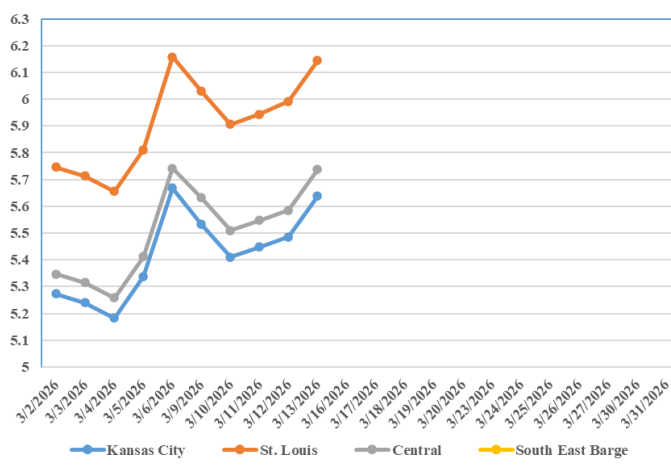
(PRICES PER BUSHEL) \*NEW CROP \*\*PREVIOUS WEEK'S PRICES  
\*Bids calculated using Kansas City, St. Louis, and St. Joseph bids

**MONTHLY GRAIN CROP**

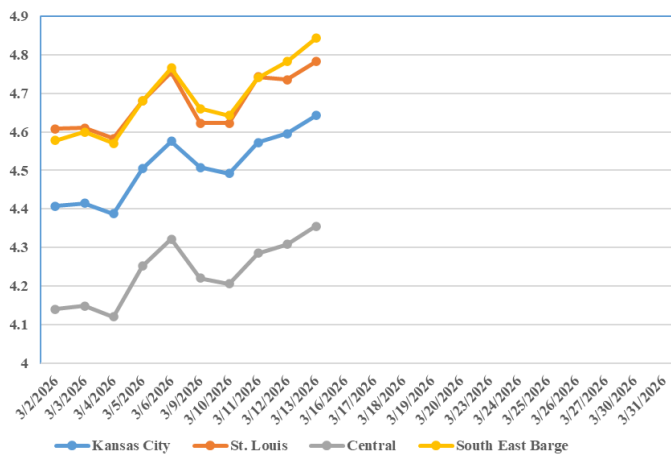
**March 2026 Soybean Bids**



**March 2026 Wheat Bids**



**March 2026 Corn Bids**



\*Axis value ranges may be updated to reflect data points.  
Only dates in which markets are trading and only current cash bids are represented.

**WHOLESALE FEEDSTUFFS PRICES (DOLLARS PER TON-BULK BASIS)**

Area	Soybean Hulls	Soybean Meal 46.5-48%	Corn Gluten Pellets 21%	Wheat Middlings
Kansas City	120.00	316.20	243.50	141.67
St. Louis	N/A	N/A	212.00	137.50

## BROILER HATCHERY

**Broiler-Type Eggs Set in the United States Up 1 Percent** Hatcheries in the United States weekly program set 253 million eggs in incubators during the week ending March 7, 2026, up 1 percent from a year ago. Average hatchability for chicks hatched during the week in the United States was 78.5 percent. Average hatchability is calculated by dividing chicks hatched during the week by eggs set three weeks earlier.

**Broiler-Type Chicks Placed in the United States Up 2 Percent** Broiler growers in the United States weekly program placed 195 million chicks for meat production during the week ending March 7, 2026, up 2 percent from a year ago. Cumulative placements from the week ending January 10, 2026 through March 7, 2026 for the United States were 1.75 billion. Cumulative placements were up 2 percent from the same period a year earlier.

## TURKEY HATCHERY

**Eggs in Incubators on March 1 Up 1 Percent from Last Year** Turkey eggs in incubators on March 1, 2026 in the United States totaled 24.4 million, up 1 percent from March 1, 2025. Eggs in incubators were down 6 percent from the February 1, 2026 total of 25.8 million eggs.

**Poults Hatched During February Up 3 Percent from Last Year** Turkey poults hatched during February 2026 in the United States totaled 20.4 million, up 3 percent from February 2025. Poults hatched were down 6 percent from the January 2026 total of 21.7 million poults.

**Net Poults Placed During February Up 3 Percent from Last Year** The 18.5 million net poults placed during February 2026 in the United States were up 3 percent from the number placed during the same month a year earlier. Net poult placements were down 8 percent from the January 2026 total of 20.0 million.

## MISSOURI WEEKLY HAY SUMMARY 3/05/2026

Areas to the south got some pre-spring pond filling rains over the last few days. Much of the rest of the state also received rain but not in the amounts as the south. Mud is fairly common out feeding now though as temperatures are staying above freezing over nights. Fertilizer and fuel prices saw jumps this week due to conflict in the middle east. Luckily prepaying has become common practice for many producers especially those planning to plant corn as prices typically always see an increase as spring arrives. The hope now is that the delivery lines remain efficient. Hay Prices continue to be mostly steady there are many new listings of hay being offered as producers try to clean out inventory before the new growing season. Supply is moderate to heavy, and demand is moderate to light. The Missouri Department of Agriculture has a hay directory at <https://apps.mda.mo.gov/haydirectory> or visit the University of Missouri Extension feed stuff finder at <https://feedstufffinder.org>

Alfalfa - Supreme 250.00-300.00, small square 10.00-15.00 per bale  
Alfalfa - Premium 175.00-225.00  
Alfalfa - Good 150.00-175.00, small square 6.00-10.00 per bale  
Alfalfa - Fair 125.00-150.00  
Mixed Grass—Premium 150.00-200.00  
Mixed grass - Good/Premium 100.00-150.00  
Mixed grass-Fair/Good 75.00-125.00, small square 3.00-7.00 per bale  
Mixed grass - Fair 20.00-45.00 per large round bale  
Wheat straw - 4.00-7.00 per small square bale

Please Note: The above volumes (tonnage, acres, and bales) listed are for confirmed trades only, it does not include estimated volume (tonnage) for bids or offers to the trade. List your hay for sale at: [Hay Listing Online Form](#). Explanation of Hay Quality Guidelines: [Hay Quality Designation Guidelines](#). Glossary of Terms: [Livestock, Poultry, & Grain Hay Terms](#)

## MISSOURI WEEKLY SHEEP/GOAT AUCTION SUMMARY

Receipts: 400 Week Ago: 1,025 Last Year: 780

**SHEEP:** Feeder Lambs: Small and Medium 1 hair 30-50 lbs 390.00-420.00. Small and Medium 1-2 hair 20-50 lbs 355.00-380.00. Slaughter Lambs: Choice and Prime 1-2 hair 50-70 lbs 380.00-422.50. Choice 1-2 hair 75-102 lbs 290.00-325.00; 10 hd 121 lbs 270.00. Ewes: Good 2-3 115-135 lbs 180.00-220.00. Utility and Good 1-3 100-165 lbs 140.00-165.00.

**GOATS:** Feeder Kids: Selection 1-2 25-35 lbs 400.00. Selection 3 35 lbs 365.00. Slaughter Kids: Selection 1 pkg 45 lbs 440.00.. Selection 1-2 pkg 80 lbs 390.00. Selection 2 pkg 50 lbs 370.00.

Explanatory Notes: Stage - Represents estimated lambing/kidding period (Open, Exp=exposed, Bred, Fall = Sep-Nov, Win = Dec-Feb, Spr = Mar-May, Sum=Jun-Aug; w/s = woolled and shorn; /hd= per head; /fam=per family  
All price CWT unless otherwise noted.

## MISSOURI DROUGHT MONITOR

Date	None	D0	D1	D2	D3	D4
3/10/26	5.41	59.71	26.36	6.71	1.81	0.0
3/03/26	2.88	37.90	39.22	17.48	2.52	0.0
3/11/25	56.84	32.20	10.00	0.95	0.0	0.0

Reflects percentage of Missouri impacted by drought. D0 Abnormally Dry; D1 Moderate Drought; D2 Severe Drought; D3 Extreme Drought; D4 Exceptional Drought

## NATIONAL DIRECT DELIVERED FEEDER PIG REPORT

3/13/26 Receipts: 138,576 Week ago: 165,205 Year Ago: 113,581  
Early weaned pigs are mostly 12.00 lower and feeder pigs are mostly 3.00 higher.

Cash: 88,851 head 74.00-118.00, weighted average 89.67

Formula: 28,225 head 51.50-109.43, weighted average 78.63

Feeder pigs 40 pounds basis: Cash 21,500 head 119.00-138.00, weighted average 126.06

## NATIONAL DAILY DIRECT PRIOR DAY HOG REPORTS 3/13/26

**BARROWS AND GILTS (Carcass Basis):** 1,995 head  
Base Carcass Price 86.00-93.00, weighted average 91.81

**SOWS (Live Basis):** 6,780 head  
300-500 lbs. 25.00-86.69  
Over 500 lbs. 63.00-88.61

## MISSOURI WEEKLY DIRECT SLAUGHTER CATTLE REPORT 3/13/26

Weekly Receipts: 0 Week ago: 0 Year ago: 240

Trading as of Friday afternoon is inactive as producers continue to pass current bids.

**LIVE STEERS & HEIFERS:**  
No sales reported.

**DRESSED STEERS & HEIFERS:**  
No sales reported

**GRADE AND EIGHT (Grid):** No sales reported.

Click here for the current [National Crop Progress](#)

Click here for the current [Missouri Crop Progress](#)

The current hay directory can be found at: [Hay Directory](#).