

Weekly Market Summary

Published by:
Missouri Department of Agriculture
Ag Business Development Division
Market News Program



Chris Chinn, Director
 Jill Wood, Division Director
 Tony Hancock, Editor
[agmarketnews.mo.gov](http://www.ams.usda.gov/marketnews.htm)
<http://www.ams.usda.gov/marketnews.htm>

Michael Kehoe, Governor

Volume XLVI, Number 17 ♦ P.O. Box 630, Jefferson City, MO 65102 ♦ (573) 751-4211 ♦ Mon, Apr 27, 2026

MISSOURI WEEKLY FEEDER CATTLE WEIGHTED AVERAGE REPORT

Feeder Cattle Receipts: 30,783 Week ago: 32,964 Year ago: 17,876
 Steers and Heifers Medium and Large 1—Weighted average weights and prices

STEERS: Medium and Large 1

281 lbs. 700.84	471 lbs. 544.17	670 lbs. 426.70	874 lbs. 357.17
324 lbs. 664.08	520 lbs. 520.65	723 lbs. 399.43	915 lbs. 344.51
368 lbs. 633.14	569 lbs. 484.84	772 lbs. 379.77	964 lbs. 331.45
421 lbs. 588.42	623 lbs. 449.15	816 lbs. 371.50	1005 lbs. 319.50

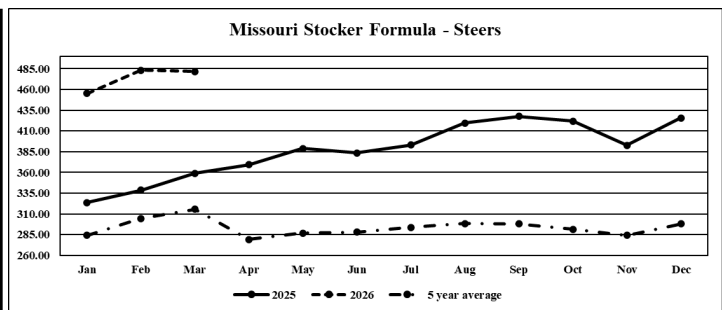
HEIFERS: Medium and Large 1

326 lbs. 598.91	519 lbs. 458.06	719 lbs. 372.66	981 lbs. 293.27
377 lbs. 563.33	573 lbs. 421.78	782 lbs. 339.27	1010 lbs. 293.26
422 lbs. 518.26	618 lbs. 408.72	822 lbs. 337.24	
474 lbs. 479.11	664 lbs. 396.12	864 lbs. 322.50	

MISSOURI STEER (HEIFER) STOCKER FORMULA 4/27/2026

Monday's Missouri Stocker formula consists of **7,083 (5,376)** head with a weighted average weight of **529.18 (521.71)** lbs. and a price value of **492.79 (439.57)**, 13.65 lower (15.54 lower) than a week ago.

This a rolling seven day calculated weighted value which combines all Feeder Steers reported by MDA/USDA Market News Service weighing from 400-649 lbs. in the Medium and Large 1 and Medium and Large 1-2 frame and muscle classifications, including all comment cattle except Brahman X. Heifer values are in parentheses.



*Graph is updated the first Monday of each month. Axis value ranges may be updated to reflect data points.

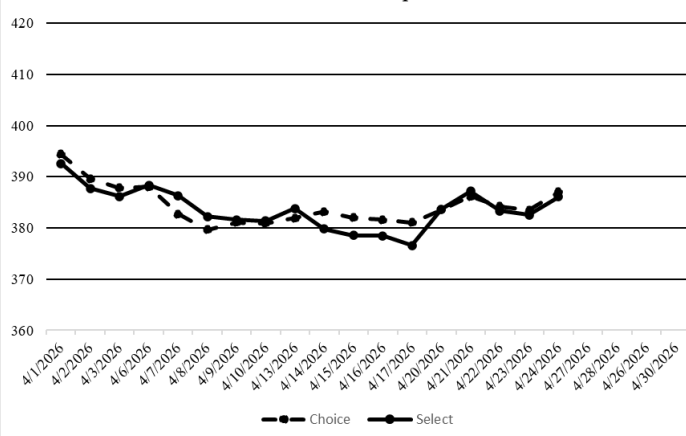
NATIONAL BOXED BEEF CUTOUT VALUES

DATE	CHOICE	SELECT	TOTAL LOADS
4/20/26	383.56	383.61	65
4/21/26	386.18	387.20	111
4/22/26	384.19	383.33	117
4/23/26	383.50	382.58	105
4/24/26	387.00	386.07	71
5 Day Simple Average	384.89	384.56	

MISSOURI WEEKLY CATTLE AUCTION SUMMARY

Total Receipts: 37,710 Week Ago: 40,613 Year Ago: 23,059
 Compared to last week, feeders sold 5.00-15.00 lower. Although there were spotty exceptions once again this week. Nearly all sectors of the cattle complex came under pressure this week and did see lower trends. The supply of feeders was moderate the weather hasn't allowed widespread planting to occur yet so that temporary marketing pause for planting really hasn't occurred. Many farmers have turned to grass now and have needs mostly filled but high prices continue to bring calves to town. The majority of the feeder supply was under 600 lbs. this week with quality, condition and health programs or lack of varying widely. Rumors and noise continue to fly around the news circles, which only creates volatility in addition to that there is a typical seasonal dip from around Mid-April to Mid-June. All that being said price levels remain very high. A few stick-out sales this week included: 30 head of 462 lb. steers at Windsor Auction that sold for 577.50. Callaway Livestock Center sold 58 head of 539 lb. steers for 539.00 and 83 head of 553 lb. steers for 527.00. Kingsville Livestock Auction sold 25 head of 640 lb. steers for 464.00 and 71 head of 665 lb. steers for 454.00. Ozarks Regional Stockyards sold 21 head of 701 lb. steers for 410.00. Joplin Regional Stockyards sold 40 head of 754 lb. steers for 390.00 and 51 head of 802 lb. steers for 380.00. Unionville Livestock Market sold a load of 866 lb. steers for 372.75. Tina Livestock Market sold 190 head of 934 lb. steers for 347.00. Callaway Livestock Center sold 67 head of 539 lb. heifers at 470.00. Windsor Livestock Auction sold 150 head of 743 lb. heifers at 374.00. Boxed beef cutout values closed higher for the week. Choice closed on Friday at 387.00, up 5.94 and select closed at 386.07, up 9.47 compared to last week. The choice/select spread is at 0.93 per cwt. Negotiated feedlot sales as of the 2:00 cutoff time on Friday afternoons report totaled just under 65K. Prices were mostly 2.00 lower on both live and dressed sales compared with the previous week. Live prices were reported mostly at 246.00 and dressed sales at 386.00. The Missouri Stocker formula consists of 7083 head with a weighted average weight of 529.18 lbs. and a price value of 492.76, 13.65 lower than last week. The steer/heifer spread is 53.22.

Boxed Beef Cuts April 2026



*Axis value ranges may be updated to reflect data points.

WEEKLY LIVESTOCK SLAUGHTER

	CATTLE	HOGS	SHEEP
Week to Date:	529,000	2,469,000	34,000
Last Week:	514,000	2,486,000	34,000
Last Year:	555,260	2,415,943	35,146

The Weekly Market Summary, as well as historical summaries, are available on our website <https://agmarketnews.mo.gov/summaries>
 Market News Hotline: 1-573-522-9244
 Check out the latest updates on our YouTube Channel: [MDA Market News](#)

SOUTHWEST MISSOURI WEEKLY SUMMARY

(Joplin, Springfield, Exeter)

Receipts: 13,262 Week ago: 16,282 Year Ago: 7,122

Compared to last week, feeders sold very uneven from 20.00 lower to 15.00 higher, most however trending with a lower market. Slaughter cows sold steady to 4.00 lower.

FEEDER STEERS:
Medium and Large 1

300-400 lbs.	610.00-750.00
400-500 lbs.	527.00-650.00
500-600 lbs.	455.00-550.00
600-700 lbs.	410.00-480.00
700-800 lbs.	373.00-420.00
800-900 lbs.	344.00-380.00
900-1000 lbs.	319.50-351.00

FEEDER HEIFERS:
Medium and Large 1

300-400 lbs.	540.00-630.00
400-500 lbs.	465.00-555.00
500-600 lbs.	400.00-490.00
600-700 lbs.	369.00-426.00
700-800 lbs.	330.00-395.00
800-900 lbs.	317.00-333.00

FEEDER HOLSTEIN STEERS
Large 3

Scarce

SLAUGHTER COWS: Breaking and Boning (70-85% lean) 160.00-180.00, high dressing 176.00-192.50, low dressing 145.00-167.50; Lean (85-90%) 144.00-167.50; high dressing 162.50-175.00; low dressing 100.00-147.50

SLAUGHTER BULLS: Yield Grade 1-2 1190-2500 lbs. 194.00-230.00; high dressing 230.00-263.00; low dressing 170.00-200.00

BRED COWS: Medium and Large 1, 1032-1390 lbs., 2-8 yrs., 1st stage 3250.00-3400.00; 2nd-3rd stage 3350.00-3950.00 per head;

COW CALF PAIRS: Medium and Large 2 with 150-300 lb. calves, 2-4 yrs., Open, 3900.00 per pair.

Medium and Large 1-2 750-1570 lbs 2-8 yrs, 1st stage, 2300.00-3550.00, 2nd-3rd stage 2500.00-3800.00; Over 8 yrs., 1st stage 2250.00-2650.00, 2nd-3rd stage 2350.00-3250.00 per head

BRED HEIFERS: Medium and Large 1, 1200-1285 lbs., 2-4 yrs., 2nd-3rd stage, 3300.00-3900.00 per head.

SOUTH CENTRAL MISSOURI WEEKLY SUMMARY

(West Plains, Phillipsburg)

Receipts: 3,629 Week ago: 4,395 Year Ago: 2,935

Compared to last week, feeders early week steady to 8.00 lower, with spots as much as 20.00 lower late week, the exception was loads of 9 wt. steers that sold 8.00 higher. Slaughter cows sold from 5.00 lower to 4.00 higher.

FEEDER STEERS:
Medium and Large 1

300-400 lbs.	630.00-665.00
400-500 lbs.	525.00-615.00
500-600 lbs.	475.00-542.00
600-700 lbs.	420.00-450.00
700-750 lbs.	389.00-410.00
800-900 lbs.	347.50-350.50
900-1000 lbs.	332.00-339.00

FEEDER HEIFERS:
Medium and Large 1

350-400 lbs.	545.00-580.00
400-500 lbs.	470.00-520.00
500-600 lbs.	400.00-480.00
600-625 lbs.	385.00-394.50
800-900 lbs.	320.00-326.00

FEEDER HOLSTEIN STEERS:
Large 3

Scarce

SLAUGHTER COWS: Breaking and Boning (70-85% lean) 159.00-185.00; high dressing 174.00-194.00; low dressing 144.00-168.00. Lean (85-90%) 137.50-166.00, high dressing 167.50-175.00, low dressing 120.00-149.00

SLAUGHTER BULLS: Yield Grade 1-2 1205-2200 lbs. 199.00-220.00; high dressing 222.50-240.00; low dressing 180.00-196.00

BRED COWS: Medium and Large 1-2, 1145-1425 lbs., 2-8 yrs., 2nd-3rd stage, 2400.00-4050.00 per head.

COW CALF PAIRS: Medium and Large 1-2 with 150-300 lb. calves, 2-8 yrs., Open, 3800.00-4350.00

WEST CENTRAL MISSOURI WEEKLY SUMMARY

(Kingsville, Windsor, Butler, Osceola)

Receipts: 8,594 Week ago: 5,988 Year ago: 5,048

Compared to last week, feeders sold with mixed trends, most were steady to 10.00 lower, although some top end 4-6 wts. found spots of 5.00-20.00 higher. Slaughter cows sold steady to 5.00 lower.

FEEDER STEERS:
Medium and Large 1

300-400 lbs.	570.00-697.50
400-500 lbs.	490.00-640.00
500-600 lbs.	442.00-544.00
600-700 lbs.	417.00-490.00
700-800 lbs.	380.00-426.00
800-900 lbs.	354.00-387.00
900-950 lbs.	325.00-349.00

FEEDER HEIFERS:
Medium and Large 1

300-400 lbs.	484.00-642.50
400-500 lbs.	436.00-562.50
500-600 lbs.	407.50-472.50
600-700 lbs.	372.00-419.00
700-800 lbs.	333.00-386.00
800-850 lbs.	321.00-359.00

SLAUGHTER BULLS: Yield Grade 1-2 1310-2220 lbs. 193.00-229.00, high dressing 225.00-258.00, low dressing 175.00-197.00

SLAUGHTER COWS: Breaking and Boning (70-85% lean) 158.00-188.00, high dressing 178.00-192.00, low dressing 141.00-173.00; Lean (85-90%) 171.00, high dressing 170.00-176.00; low dressing 100.00-171.00

BRED COWS: Medium and Large 1-2, 2-8 yrs., 2nd-3rd stage, 2700.00-3900.00; Over 5 yrs., 2nd-3rd stage, 2500.00-3500.00

COW CALF PAIRS: Medium and Large 1 with 150-300 lb. calves, Over 5 yrs., 1st stage, 4450.00

NORTHEAST MISSOURI WEEKLY SUMMARY

(Bowling Green, Kingdom City, Palmyra)

Receipts: 4,442 Week ago: 5,951 Year ago: 3,377

Compared to last week, feeder steers and heifers under 700 lbs sold mostly steady to firm with yearlings over 700 lbs steady to 5.00 lower with most decline over 800 lbs. Slaughter cows sold steady.

FEEDER STEERS:
Medium and Large 1

400-500 lbs.	527.50-632.50
500-600 lbs.	451.00-555.00
600-700 lbs.	411.00-467.00
700-800 lbs.	381.85-412.50
64 hd. 835 lbs.	369.00
55 hd. 944 lbs.	341.00

FEEDER HEIFERS:
Medium and Large 1

300-400 lbs.	565.00-617.50
400-500 lbs.	479.00-539.00
500-600 lbs.	405.00-485.00
600-700 lbs.	368.25-426.50
118 hd. 862 lbs.	324.00

SLAUGHTER BULLS: Yield Grade 1-2 1490-2630 lbs. 200.00-214.00; high dressing 214.00-238.50.

SLAUGHTER COWS: Breaking and Boning, (70-85% lean) 167.00-180.50; high dressing 179.00-190.00; low dressing 149.00-166.00. Lean (85-90%) 153.00-168.00; high dressing 168.00-179.00; low dressing 135.00-151.00

SLAUGHTER STEERS: Choice 2 -3, 243.00-247.00

SLAUGHTER HEIFERS: Choice 2-3, 243.50-246.00

BRED COWS: Scarce

HEIFER PAIRS: Scarce

NORTH CENTRAL MISSOURI WEEKLY SUMMARY

(Macon, Unionville, Green City, New Cambria)

Receipts: 1,786 Week ago: 2,472 Year ago: 750

A light test of feeders sold firm to higher than two weeks ago. Slaughter cows 1.00-5.00 lower.

*Some sale barns on a bi-weekly schedule and may not have a sale each week.

FEEDER STEERS:
Medium and Large 1

400-500 lbs.	527.50-597.50
500-600 lbs.	467.50-520.00
600-700 lbs.	419.50-443.00
850-900 lbs.	369.00-372.75

FEEDER HEIFERS:
Medium and Large 1

400-500 lbs.	460.00-532.50
500-600 lbs.	429.50-474.00
77 hd. 717 lbs.	356.50
60 hd. 816 lbs.	337.75

SLAUGHTER BULLS: Yield Grade 1-2, 1560-2525 lbs., 194.00-214.00, high dressing, 214.00-254.00.

SLAUGHTER COWS: Breaking and Boning (70-85% lean) 154.00-179.00, high dressing 169.00-187.00; Lean (85-90%) 146.00-167.00

BRED COWS: Medium and Large 1, 2-8 yrs., 2nd stage, 4400.00-4600.00

COW CALF PAIRS: Medium and Large 1 with 150-300 lb. calves, 2-8 yrs., Open, 6000.00

SOUTHEAST MISSOURI WEEKLY SUMMARY

(Jackson and Farmington)

Receipts: 1,161 Week ago: 1,281 Year ago: 1,226

Compared to last week, feeders were uneven from 10.00 lower to 15.00 higher. Slaughter cows and bulls sold steady.

FEEDER STEERS:
Medium and Large 1

300-350 lbs. 550.00-622.00
400-500 lbs. 495.00-600.00
500-600 lbs. 445.00-540.00
600-700 lbs. 390.00-437.00
700-800 lbs. 345.00-377.00

FEEDER HEIFERS:
Medium and Large 1

300-400 lbs. 470.00-595.00
400-500 lbs. 400.00-510.00
500-600 lbs. 385.00-465.00
600-700 lbs. 365.00-400.00
700-800 lbs. 322.00-377.00

SLAUGHTER BULLS: Yield Grade 1-2, 1260-2225 lbs., high dressing, 195.00-237.00

SLAUGHTER COWS: Breaking and Boning (75-85% lean) 145.00-178.00; high dressing 162.50-181.00; Lean (85-90% lean) 100.00-135.00; high dressing 136.50-164.00

BRED COWS: Medium and Large 2, 2-8 yrs, 1080-1425 lbs, 2nd-3rd stage, 2200.00-3800.00 per head

COW & CALF PAIRS: Scarce

EAST CENTRAL MISSOURI WEEKLY SUMMARY

(Cuba, Vienna)

Receipts: 1,524 Week ago: 3,131 Year ago: 748

Compared to last week, feeders sold weak to 15.00 lower with some under 400 lbs 20.00-30.00 lower. Slaughter cows sold steady.

FEEDER STEERS:
Medium and Large 1

300-350 lbs. 630.00-680.00
400-500 lbs. 518.00-594.00
500-600 lbs. 440.00-550.00
600-700 lbs. 410.00-460.00

FEEDER HEIFERS:
Medium and Large 1

300-400 lbs. 470.00-595.00
400-500 lbs. 445.00-557.50
500-600 lbs. 390.00-460.00
700-800 lbs. 320.00-358.50

SLAUGHTER BULLS: Yield grade 1-2, 1610-2135 lbs., 202.00-223.00

SLAUGHTER COWS: Breaking and Boning, (70-85% lean) 165.00-178.00, high dressing 177.00-187.50; Lean (85-90%) 148.00-165.00, high dressing 167.00-169.00, low dressing 135.00-148.00

BRED COWS: Medium and Large 1-2, 980-1448 lbs., 2-8 yrs., 1st-3rd stage, 3000.00-4200.00; Over 8 yrs., 2nd-3rd stage, 2625.00-3750.00

COW CALF PAIRS: Medium and Large 1 with 150-300 lb. calves, 2-4 yrs., Open, 5200.00-6000.00

NORTHWEST MISSOURI WEEKLY SUMMARY

(Tina)

Receipts: 3,312 Week ago: 1,113 Year ago: 840

Compared to last week, feeder steers under 700 lbs. sold mostly steady and the feeder heifers under 650 lbs. sold 5.00-10.00 higher.

FEEDER STEERS:
Medium and Large 1

300-400 lbs. 586.00-707.50
400-500 lbs. 520.00-610.00
500-600 lbs. 487.50-546.50
600-650 lbs. 445.00-457.00
36 hd. 890 lbs. 346.00
925-950 lbs. 347.00

FEEDER HEIFERS:
Medium and Large 1

350-400 lbs. 572.50-620.00
400-500 lbs. 496.00-552.50
500-600 lbs. 423.00-499.00
600-650 lbs. 411.00
65 hd. 799 lbs. 339.25

SLAUGHTER BULLS: Yield Grade 1-2, 1260-2115 lbs., 210.00-215.00, high dressing 220.00-225.00

SLAUGHTER COWS: Breaking and Boning, (70-85% lean) 165.00-181.00, high dressing 175.00-190.50; Lean (85-90%) 145.00-163.00, high dressing 162.00-179.00

BRED COWS: Medium and Large 1, 995-1475 lbs., 2-4 yrs., 1st-2nd stage, 3000.00-4200.00; 5-8 yrs., 1st-3rd stage, 3000.00-4600.00

HEIFER PAIRS: Medium and Large 1 with under 150 lb. calves, under 2 yrs., Open, 5400-5900; 7 hd. of fancy, 6250.00

AFTERNOON NATIONAL SLAUGHTER CATTLE REVIEW

So far for Friday, negotiated cash trade has been limited on moderate demand in the Western Cornbelt. There were a few live purchases at 248.00, but not enough for an adequate market test. The last established market in the Western Cornbelt was Thursday at 246.00 for live purchases and dressed purchases were at 386.00. Negotiated cash trade has been mostly inactive on light to moderate demand in all other major feeding regions. The last established market in the Texas Panhandle was Wednesday with live purchases at 246.00. The last established market in Kansas was Thursday with live purchases at mostly 246.00. The last established market in Nebraska was Thursday with live purchases at 246.00 and dressed purchases at 386.00.

Negotiated Cash Sales:					
Confirmed:	6,037	Week Ago:	34,698	Year Ago:	8,535
Week to date:	64,545	Week Ago:	87,349	Year Ago:	13,630

Live Basis	Steers	Heifers
Over 80% Choice	246.00 - 248.00 avg 247.93	248.00 - 248.00 avg 248.00
65-80% Choice	-	246.00 - 246.00 avg 246.00
35-65% Choice	-	-
0-35% Choice	-	-
Total All Grades	246.00 - 248.00 avg 247.93	246.00 - 248.00 avg 247.44
Dressed Basis		
Over 80% Choice	386.00 - 386.00 avg 386.00	-
65-80% Choice	-	-
35-65% Choice	-	-
0-35% Choice	-	-
Total All Grades	386.00 - 386.00 avg 386.00	-

All Beef Type Steers/Heifers	Head	Avg Wt	Price Range	Wtd Avg
Live FOB	4,079	1,516.5	246.00-248.00	247.71
Live Del	1,189	1,545.3	246.00-250.00	249.61
Dressed Del	246	951.2	386.00-395.00	389.18
Dressed FOB	487	844.1	390.00-390.00	390.00

WEEKLY COMMODITY FUTURES TRENDS

Compared to last week, Live Cattle 0.32 to 2.13 lower, Lean Hogs 0.85 to 1.68 higher, Feeder Cattle 3.53 to 4.37 lower.

Daily Futures Closes

	Mon.	Tues.	Wed.	Thu.	Fri.
Cattle					
Apr	249.60	247.42	246.85	247.07	248.30
Jun	246.07	243.55	243.07	243.50	245.22
Aug	241.60	239.70	239.17	240.15	241.65
Oct	236.97	235.45	235.05	235.72	237.47
Dec	236.62	235.07	234.65	235.30	237.10
Lean Hogs					
May	94.22	95.40	95.05	95.65	94.30
Jun	101.72	103.20	102.62	103.45	101.90
Jul	104.00	105.22	105.70	106.42	104.90
Aug	104.00	105.12	106.12	106.87	105.57
Oct	89.30	90.07	91.17	91.95	91.15
Fdr Cattle					
Apr	368.87	366.57	366.80	366.62	367.62
May	361.10	358.55	358.42	358.87	360.90
Aug	361.35	358.95	358.87	359.35	361.77
Sep	359.22	356.67	356.42	357.07	359.75
Oct	356.80	354.30	353.80	354.60	357.52
Milk					
Apr	16.85	16.85	16.84	16.85	16.84
May	17.03	17.30	17.46	17.33	17.55
Jun	17.73	17.90	18.03	17.96	18.13

WEEKLY COMMODITY GRAIN FUTURES TRENDS

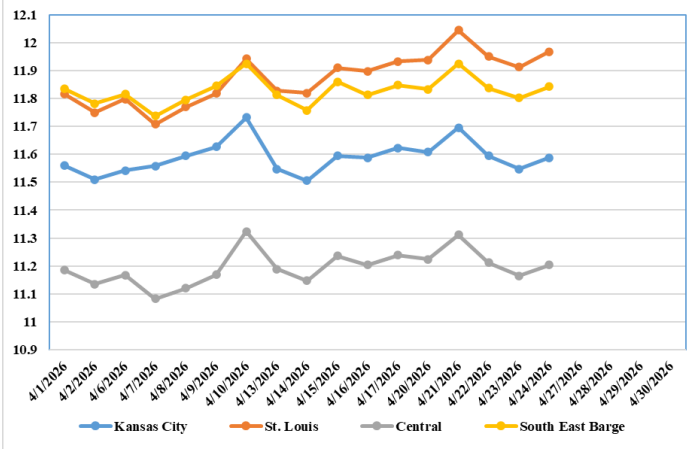
Compared to last week, Soybeans 0.01 to 0.05 lower, Wheat 0.17 to 0.20 higher, Corn 0.06 to 0.08 higher, KC Wheat 0.18 to 0.22 higher, Soybean Meal 7.50 to 8.90 lower.

Daily Grain Futures Closes

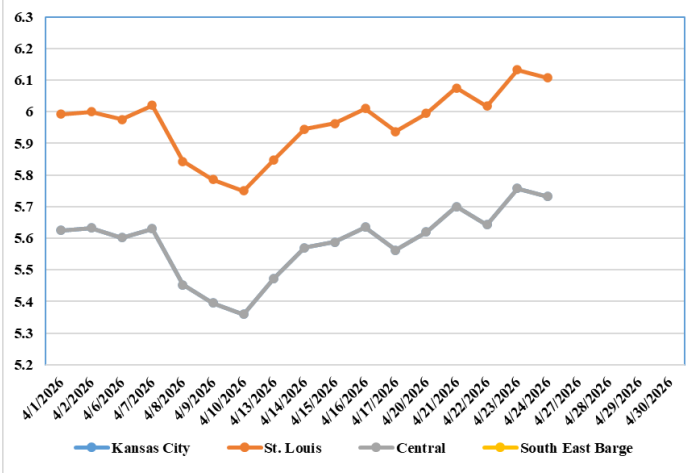
	Mon.	Tues.	Wed.	Thu.	Fri.
Soybeans					
May	1165 3/4	1174 1/2	1164 1/2	1159 3/4	1163 3/4
Jul	1181 3/4	1190 1/4	1179 1/2	1174 3/4	1178 1/2
Aug	1175 3/4	1184	1173 1/4	1169	1171 1/2
Sep	1152 3/4	1162 1/4	1151 3/4	1149 1/4	1150 1/2
Nov	1157 3/4	1166 1/2	1156	1155	1155 3/4
Wheat					
May	597	605	599 1/4	610 3/4	608 1/4
Jul	606	612 3/4	607	620 1/4	616 3/4
Sep	618 3/4	625 1/2	620 1/4	633 1/4	630 1/4
Dec	637 1/2	644 1/2	638 3/4	651 3/4	649 1/2
Mar	652 3/4	660 1/4	655	667 1/4	666
Corn					
May	452	453 3/4	454 1/4	455 1/2	455
Jul	460 1/4	462	462 3/4	463 3/4	463 1/2
Sep	463 3/4	465 3/4	467	468 1/2	468 1/2
Dec	479 1/2	481 3/4	482 1/4	483 1/2	484 1/4
Mar	493 1/2	495 3/4	495 3/4	496 1/2	498
KC Wheat					
May	635	643 1/2	637 3/4	666 3/4	659
Jul	647 1/2	655 3/4	650	679 1/4	669 3/4
Sep	659 1/4	667 3/4	662	690 3/4	680 3/4
Dec	674 1/4	683 1/2	678 1/4	704 1/2	695
Mar	685 3/4	695 1/2	690 1/2	714	705 1/2
SB Meal					
May	325.10	325.30	320.60	320.60	324.30
Jul	321.20	321.20	316.30	316.50	319.10
Aug	316.70	315.30	311.30	311.50	313.10
Sep	313.30	311.20	307.90	307.90	309.00
Oct	311.30	309.20	306.30	305.80	306.20

MONTHLY GRAIN CROP

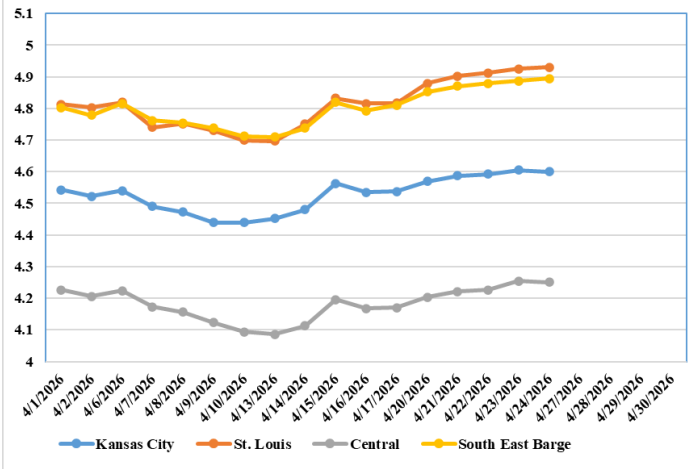
April 2026 Soybean Bids



April 2026 Wheat Bids



April 2026 Corn Bids



MISSOURI GRAIN WEEKLY TRENDS

Compared to last week, Soybeans 0.04 lower to 0.11 higher, Wheat 0.17 higher, Corn 0.07 to 0.15 higher.

Area	#1 Soybeans	#2 Soft Wheat	#2 Corn	#2 Grain Sorghum
Kansas City				
Friday**	11.42-11.82	5.56	4.53	---
Monday	11.40-11.80	5.62	4.57	---
Tuesday	11.49-11.89	5.70	4.58	---
Wednesday	11.39-11.79	5.64	4.59	---
Thursday	11.34-11.74	5.75	4.60	---
Friday	11.38-11.78	5.73	4.60	---
St. Louis				
Friday**	11.91-11.95	5.91-5.96	4.81	---
Monday	11.91-11.95	5.97-6.02	4.87-4.89	---
Tuesday	12.04	6.05-6.10	4.89-4.90	---
Wednesday	11.94-11.95	5.99-6.04	4.90-4.92	---
Thursday	11.90-11.91	6.10-6.15	4.90-4.94	---
Friday	11.95-11.97	6.08-6.13	4.91-4.95	---
Central				
Friday**	11.17-11.27	5.56	4.13-4.18	---
Monday	11.15-11.25	5.62	4.17-4.22	---
Tuesday	11.24-11.34	5.70	4.18-4.23	---
Wednesday	11.14-11.24	5.64	4.19-4.24	---
Thursday	11.09-11.19	5.75	4.20-4.30	---
Friday	11.13-11.23	5.73	4.20-4.30	---
S.E. MO				
Friday**	11.67-11.94	---	4.78-4.84	---
Monday	11.65-11.92	---	4.82-4.88	---
Tuesday	11.74-12.01	---	4.83-4.89	---
Wednesday	11.64-11.94	---	4.84-4.91	---
Thursday	11.59-11.89	---	4.85-4.92	---
Friday	11.63-11.93	---	4.85-4.92	---

*Axis value ranges may be updated to reflect data points. Only dates in which markets are trading and only current cash bids are represented.

WHOLESALE FEEDSTUFFS PRICES (DOLLARS PER TON-BULK BASIS)

Area	Soybean Hulls	Soybean Meal 46.5-48%	Corn Gluten Pellets 21%	Wheat Middlings
Kansas City	102.50	321.05	253.67	111.67
St. Louis	n/a	n/a	217.00	100.00

(PRICES PER BUSHEL) *NEW CROP **PREVIOUS WEEK'S PRICES *Bids calculated using Kansas City, St. Louis, and St. Joseph bids

CROP PROGRESS

There were 2.9 days suitable for fieldwork in the week ending April 19, 2026. Topsoil moisture supply was rated 1 percent very short, 8 percent short, 74 percent adequate, and 17 percent surplus. Subsoil moisture supply was rated 4 percent very short, 14 percent short, 73 percent adequate, and 9 percent surplus. Corn planted was at 23 percent, compared to the 5-year average of 27 percent. Corn Emerged was at 11 percent compared to the 5-year average of 5 percent. Soybeans planted was at 14 percent complete, compared to the 5-year average of 8. Winter Wheat headed was at 22 percent, ahead of the 5-year average of 9 percent. Winter Wheat Condition was rated at 1 percent very poor, 4 percent poor, 30 percent fair, 57 percent good, and 8 percent excellent.

	WEEK ENDING			5 yr avg
	4/19/25	4/12/26	4/19/26	
Corn Planted	30	15	23	27
Corn Emerged	5	8	11	5
Soybean Planted	14	8	14	8
Winter Wheat Headed	12	9	22	9

COLD STORAGE

Total natural cheese stocks in refrigerated warehouses on March 31, 2026 were up 1 percent from the previous month but down 2 percent from March 31, 2025.

Butter stocks were up 13 percent from last month but down 11 percent from a year ago.

Total frozen poultry supplies on March 31, 2026 were down slightly from the previous month and down 5 percent from a year ago. Total stocks of chicken were down 3 percent from the previous month and down 3 percent from last year. Total pounds of turkey in freezers were up 9 percent from last month but down 9 percent from March 31, 2025.

Total red meat supplies in freezers were down slightly from the previous month and down 2 percent from last year. Total pounds of beef in freezers were down 2 percent from the previous month and down 3 percent from last year. Frozen pork supplies were up 2 percent from the previous month and up slightly from last year. Stocks of pork bellies were up 5 percent from last month but down 13 percent from last year.

MISSOURI WEEKLY HAY SUMMARY 4/16/2026

Rains have greatly improved conditions for the northern 2/3 of the state. The case is much different in southern 1/3 however as it remains very dry with much of the far SE in severe to extreme drought. Planting of grain crops has been fairly slow due to scattered rains, most producers have gotten fertilizer spread. Several farmers waiting for a window to start wrapping some hay but thus far no reports of any being done but it wouldn't be surprising if there has been a least a few bales wrapped at this point. Hay prices are steady to weak for the more common quality hay, higher end hay remains fully steady. The Missouri Department of Agriculture has a hay directory at <https://apps.mda.mo.gov/haydirectory> or visit the University of Missouri Extension feed stuff finder at <https://feedstufffinder.org>

Alfalfa - Supreme 250.00-300.00, small square 10.00-15.00 per bale
 Alfalfa - Premium 175.00-225.00
 Alfalfa - Good 150.00-175.00, small square 6.00-10.00 per bale
 Alfalfa - Fair 125.00-150.00

Mixed Grass—Premium 150.00-200.00
 Mixed grass - Good/Premium 100.00-150.00
 Mixed grass-Fair/Good 50.00-100.00, small square 2.25-7.00 per bale
 Mixed grass - Fair 20.00-40.00 per large round bale.

Please Note: The above volumes (tonnage, acres, and bales) listed are for confirmed trades only, it does not include estimated volume (tonnage) for bids or offers to the trade. List your hay for sale at: [Hay Listing Online Form](#). Explanation of Hay Quality Guidelines: [Hay](#)

MISSOURI WEEKLY SHEEP/GOAT AUCTION SUMMARY

Receipts: 4,120 Week Ago: 1,414 Last Year: 2,298

Sheep: Feeder Lambs: Medium and Large 1-2 35-45 lbs 365.00-420.00. Small and Medium 1-2 hair 30-40 lbs 350.00-430.00; 40-50 lbs 350.00-385.00. Slaughter Lambs: Choice and Prime 1-3 wooled and shorn 50-80 lbs 375.00-385.00. Choice and Prime 1-3 hair 50-60 lbs 365.00-390.00; 60-70 lbs 350.00-385.00; 70-80 lbs 355.00-390.00; 80-90 lbs 390.00-420.00; 90-100 lbs 370.00-395.00. Choice 1-3 hair 50-60 lbs 350.00-365.00; 60-70 lbs 330.00-365.00; 70-80 lbs 340.00-355.00; 80-90 lbs 355.00-380.00. Ewes: Good 2-3 hair 70-80 lbs 200.00-240.00; 105-135 lbs 170.00-200.00. Utility and Good 1-3 hair 90-100 lbs 145.00-170.00; 100-150 lbs 130.00-165.00. Replacement Ewes: Small and Medium 1-2 hair per head. 1-2 yrs pkg 11 head 88 lbs exp 255.00. 2-4 yrs 110-120 lbs exp 225.00-275.00.

Goats: Feeder Kids: Selection 1 25-30 lbs 460.00-500.00; 30-40 lbs 400.00-470.00; 40-50 lbs 450.00-525.00, fancy 560.00-580.00. Selection 2 30-40 lbs 350.00-450.00; 40-50 lbs 330.00-415.00. Selection 3 30-40 lbs 210.00-350.00; 40-50 lbs 250.00-310.00. Slaughter Classes: Kids Selection 1 50-60 lbs 460.00-570.00; 60-70 lbs 440.00-550.00, fancy 595.00-600.00; 70-80 lbs 450.00-530.00. Selection 2 50-60 lbs 350.00-450.00; 60-70 lbs 340.00-370.00; 70-80 lbs 310.00-400.00; 80-90 lbs 320.00-390.00. Selection 3 50-75 lbs 300.00-310.00. Nannies Selection 1-2 50-60 lbs 220.00-250.00; 60-70 lbs 227.50-250.00; 70-80 lbs 220.00-270.00; 80-90 lbs 200.00-285.00; 100-150 lbs 170.00-255.00. Billies 90-100 lbs 250.00-270.00; 100-150 lbs 245.00-280.00; 150-180 lbs 235.00-255.00. Replacement Nannies Selection 1-2 2-4 yrs 75-100 lbs exp 285.00-320.00.

Explanatory Notes: Stage - Represents estimated lambing/kidding period (Open, Exp=exposed, Bred, Fall = Sep-Nov, Win = Dec-Feb, Spr = Mar-May, Sum=Jun-Aug; w/s = wooled and shorn; /hd= per head; /fam=per family
 All price CWT unless otherwise noted.

MISSOURI DROUGHT MONITOR

Date	None	D0	D1	D2	D3	D4
4/21/26	76.16	11.98	3.37	3.33	5.15	0.01
4/14/26	60.93	18.03	10.20	4.06	6.76	0.01
4/22/25	88.20	11.73	0.07	0.0	0.0	0.0

Reflects percentage of Missouri impacted by drought. D0 Abnormally Dry; D1 Moderate Drought; D2 Severe Drought; D3 Extreme Drought; D4 Exceptional Drought

NATIONAL DIRECT DELIVERED FEEDER PIG REPORT

4/24/26 Receipts: 175,182 Week ago: 144,626 Year Ago: 102,475
 Early weaned pigs are 2.00 lower and feeder pigs are 3.00 lower.

Cash: 89,100 head, 67.00-90.00, weighted average 76.23
 Formula: 57,042 head, 47.44-84.81, weighted average 62.61
 Feeder pigs 40 pounds basis: Cash 29,040 head, 101.00-125.00, weighted average 117.02

NATIONAL DAILY DIRECT PRIOR DAY HOG REPORTS 4/24/26

BARROWS AND GILTS (Carcass Basis): 2,771 head
 Base Carcass Price 88.00-95.00, weighted average 92.72

SOWS (Live Basis): 7,107 head
 300-500 lbs. 25.00-69.00
 Over 500 lbs. 39.00-69.00

MISSOURI WEEKLY DIRECT SLAUGHTER CATTLE REPORT 4/24/26

Weekly Receipts: 200 Week ago: 280 Year ago: 320
 Trade so far Friday morning is light to moderate with Flat dressed sales trading 2.00 lower at 386.00. Grid dressed sales are 2.00 higher than last week's bid at 392.00.

LIVE STEERS & HEIFERS: No sales reported. **DRESSED STEERS & HEIFERS:** 5 loads Thursday Flat 386.00

GRADE AND EIGHT (Grid): No sales reported.

Click here for the current [National Crop Progress](#)
 Click here for the current [Missouri Crop Progress](#)
 The current hay directory can be found at: [Hay Directory](#).