



# Missouri Spongy Moth Survey Report 2024

Annual Summary  
Of The Missouri Cooperative  
Spongy Moth Survey Program

Prepared by  
Alyssa Bennett, Forest Pest Program Coordinator  
and  
Rosalee Knipp, State Entomologist  
Plant Pest Control Bureau  
Missouri Department of Agriculture  
P.O. Box 630  
Jefferson City, MO 65102  
(573) 751-5505  
Fax: (573) 522-1109  
E-mail: [alyssa.bennett@mda.mo.gov](mailto:alyssa.bennett@mda.mo.gov)

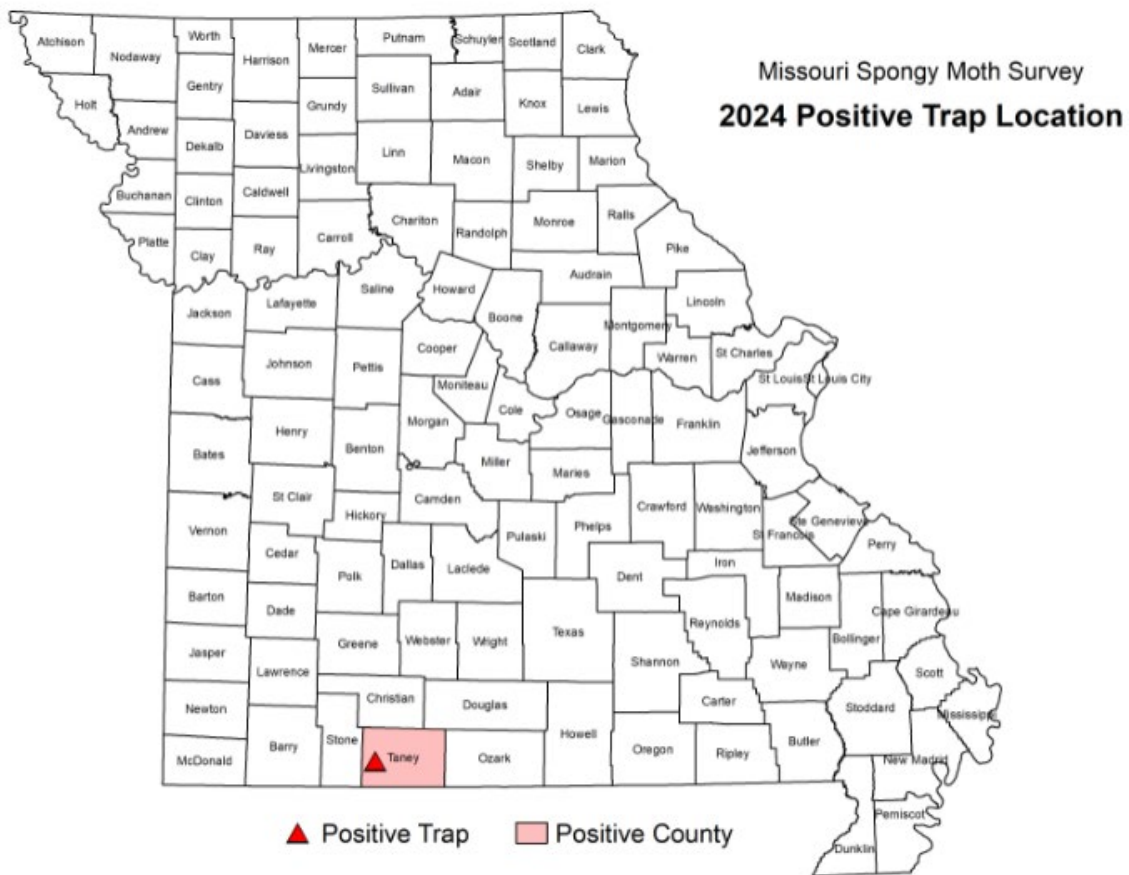
# 57 YEARS OF SPONGY MOTH SURVEY IN MISSOURI!!

## 2024 Spongy Moth Survey Results

A total of one (1) moth was reported from our multi-agency, statewide survey. The moth was captured in Taney County.

The moth was forwarded to the USDA OTIS lab for molecular testing and was found negative for *Lymantria dispar asiatica*, the flighted gypsy moth complex, formerly known as Asian gypsy moth.

Approximately 5,693 pheromone traps were placed around the state (61 of 114 counties) by all cooperators in the annual effort to detect the presence of this damaging insect pest. Primary trapping agencies were Missouri Department of Agriculture and Missouri Department of Conservation, with additional trapping conducted by U.S. Army and Missouri National Guard.



October 2024

Figure 1. 2024 Missouri Spongy Moth Positives

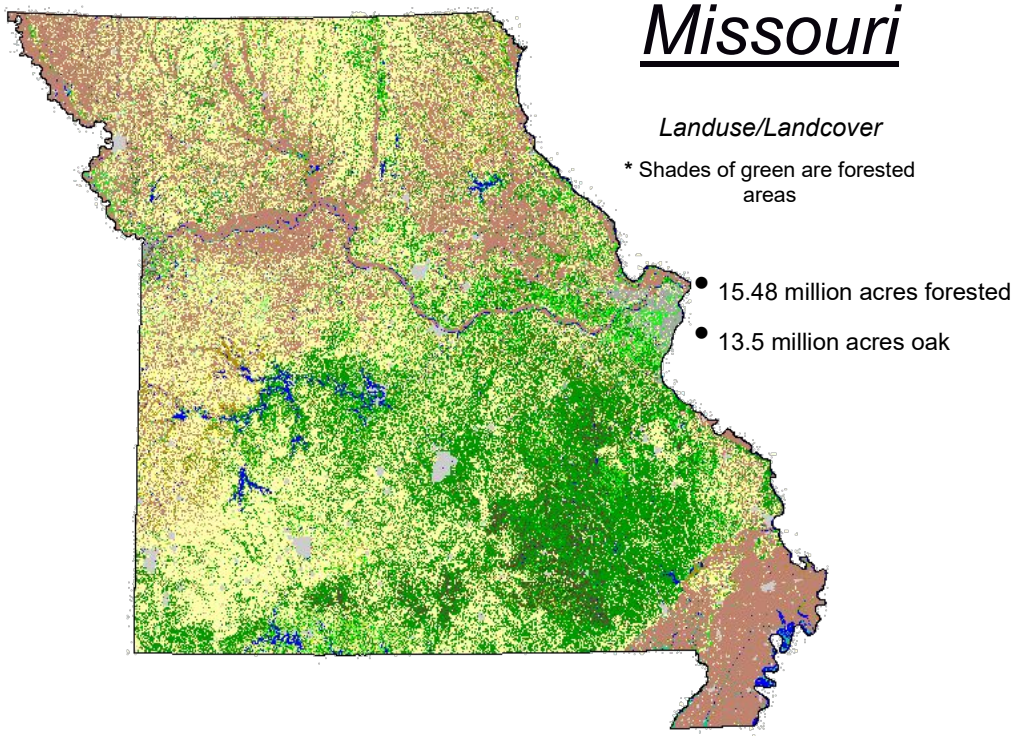


Figure 2. Missouri's Forested Area

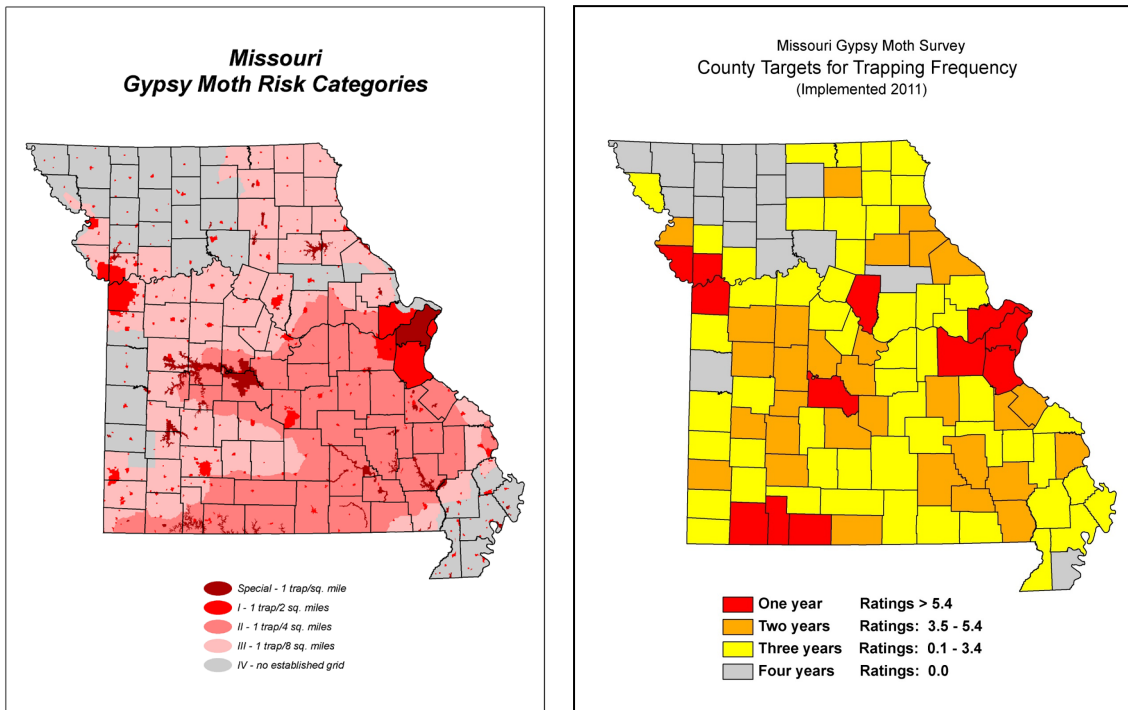
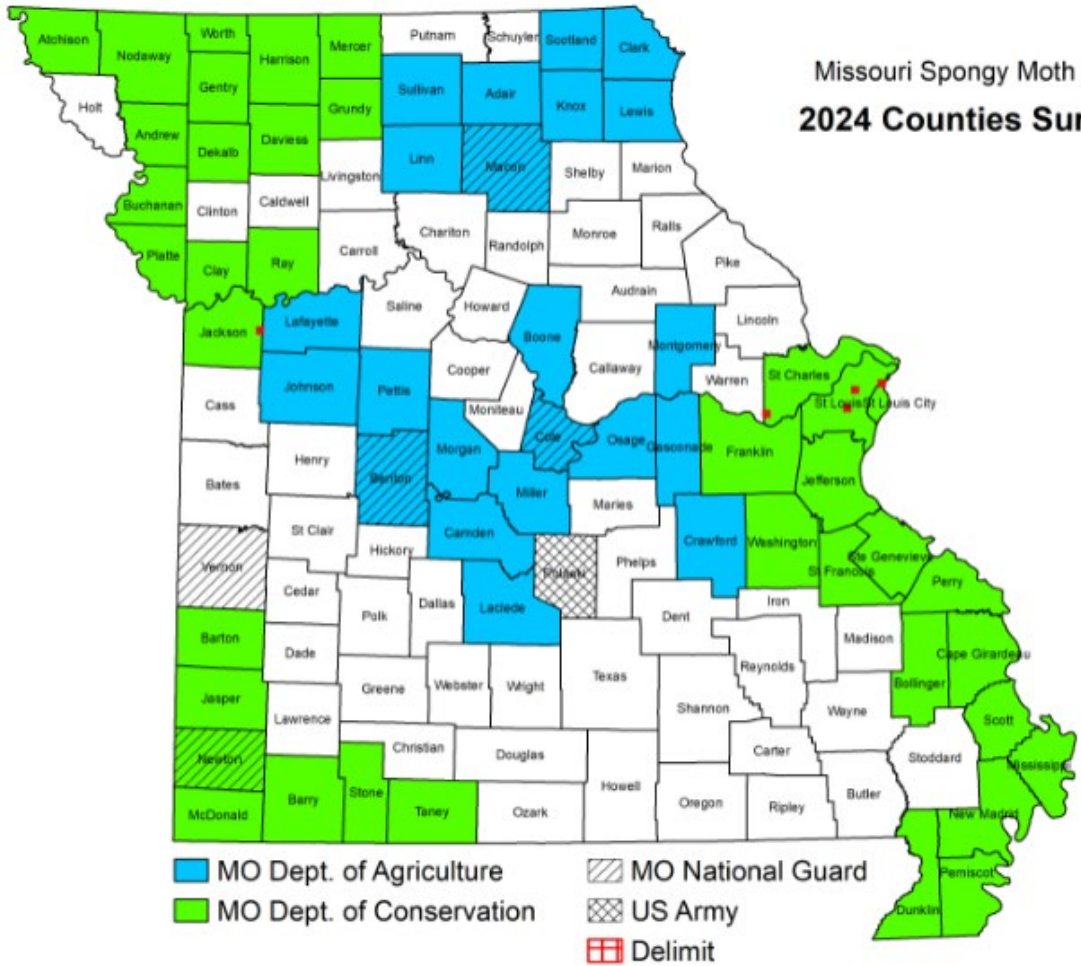


Figure 3. Spongy Moth Risk Categories and Trap Densities (on left) and County Trapping Frequency (on right). Counties are surveyed every 1-4 years in the red areas indicated on the map on the left.

Missouri Spongy Moth Survey  
**2024 Counties Surveyed**



October 2024

Figure 4. Missouri Spongy Moth Survey Agency Trapping Assignments for 2024 (61 Counties Surveyed (53-full survey and 8-partial survey))

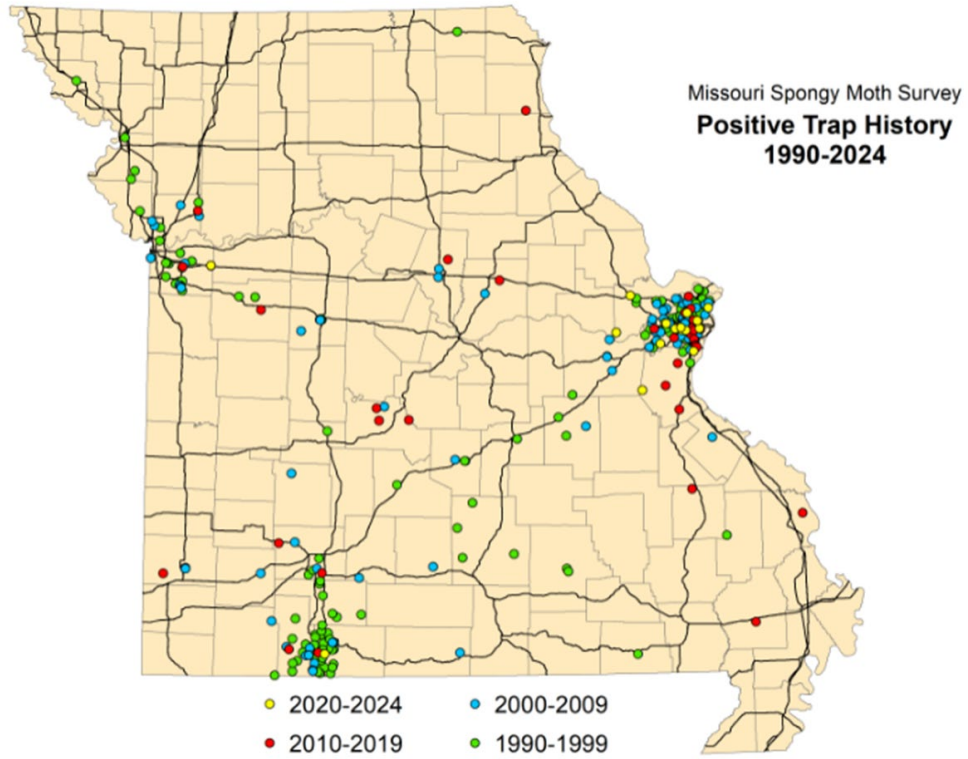


Figure 5. Spongy moth captures 1990-2024

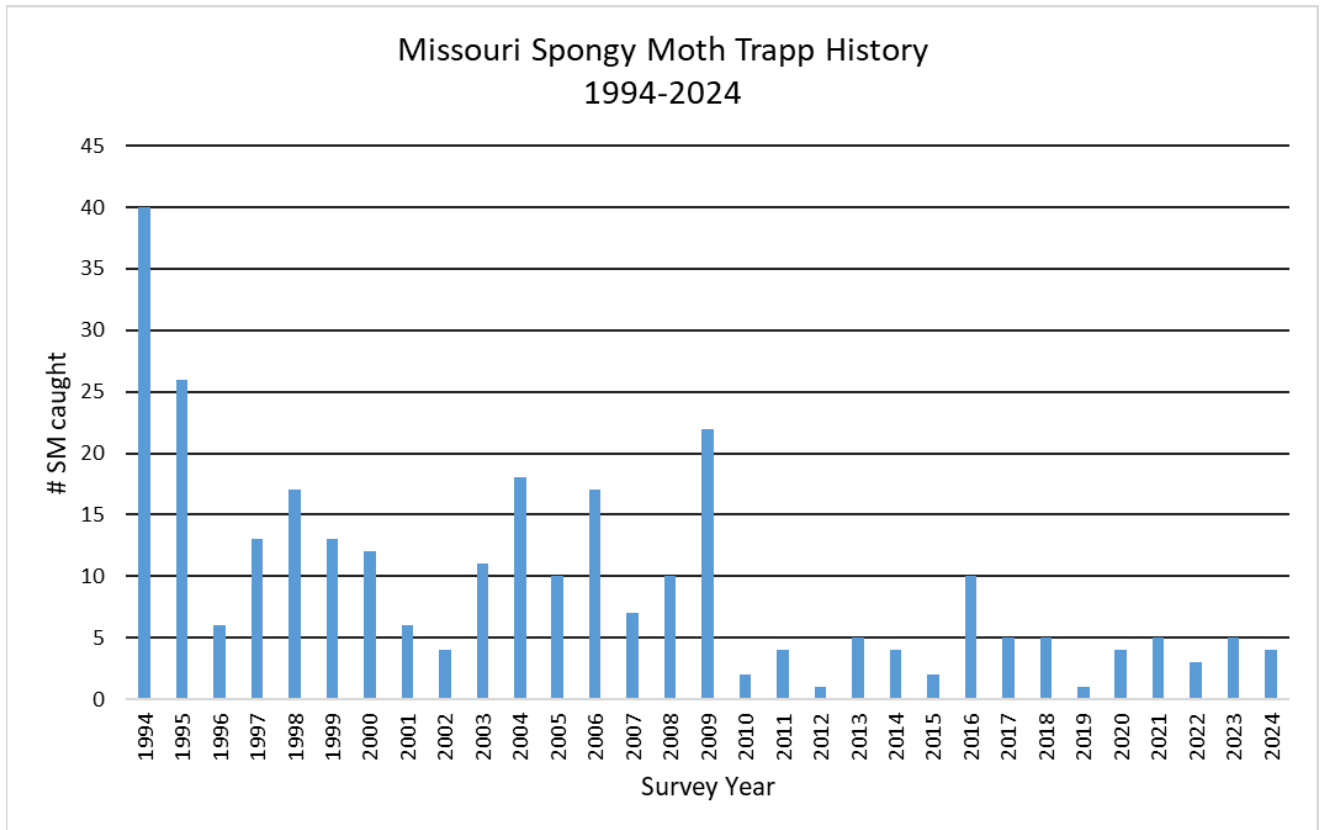


Figure 6. Historic Spongy Moth Trapping Data in Missouri